

SURFACE PROTECT. OBERFL. SCHUTZ	
I	JED-240-3
II	JED-256-1
III	JED-371
IV	AL, JED-259
V	GUMMI / KUNSTSTOFF
VI	MS
VII	JED-240-2
TECHNICAL DATA TECHNISCHE DATEN	
VIII	
IX	
X	

MEDIUM : AIR
 MEDIUM : LUFT
 FLUIDE : AIR
 FLUIDO : ARIA

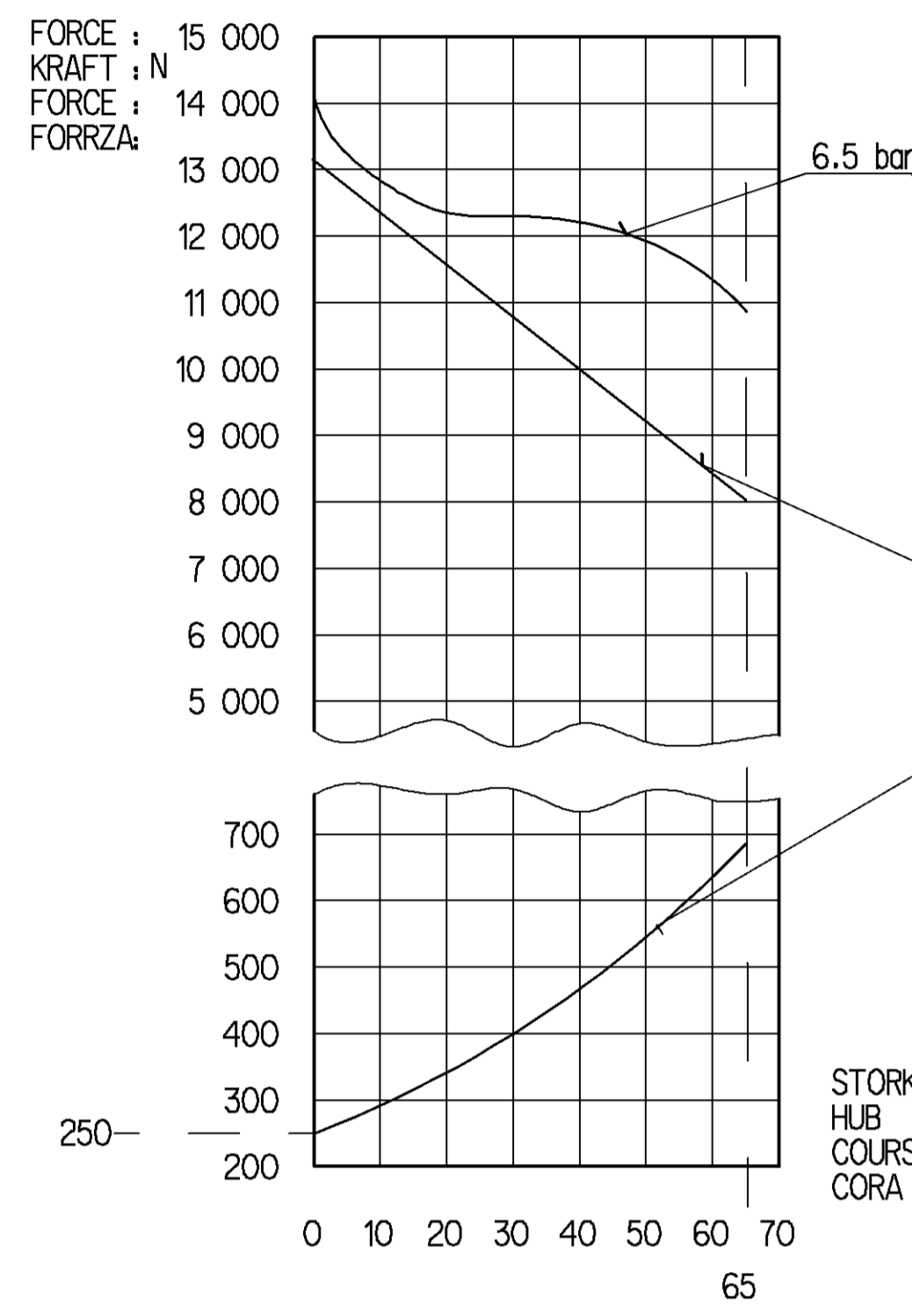
NOMINAL DIAMETER : MIN \varnothing 8.5
 NEUWEITE :
 DIAMETRE NOMINAL :
 DIAMETRO NOMINALE :

WIDTH ACROSS FLATS
 SW
 SCHALLESSELWEITE
 SURPLATS
 LAGHEZZA IN CHIAVE

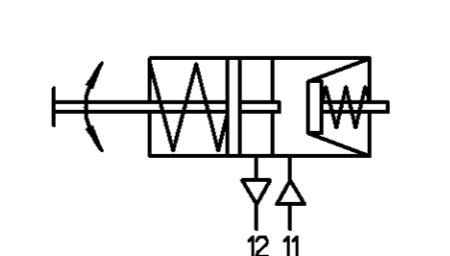
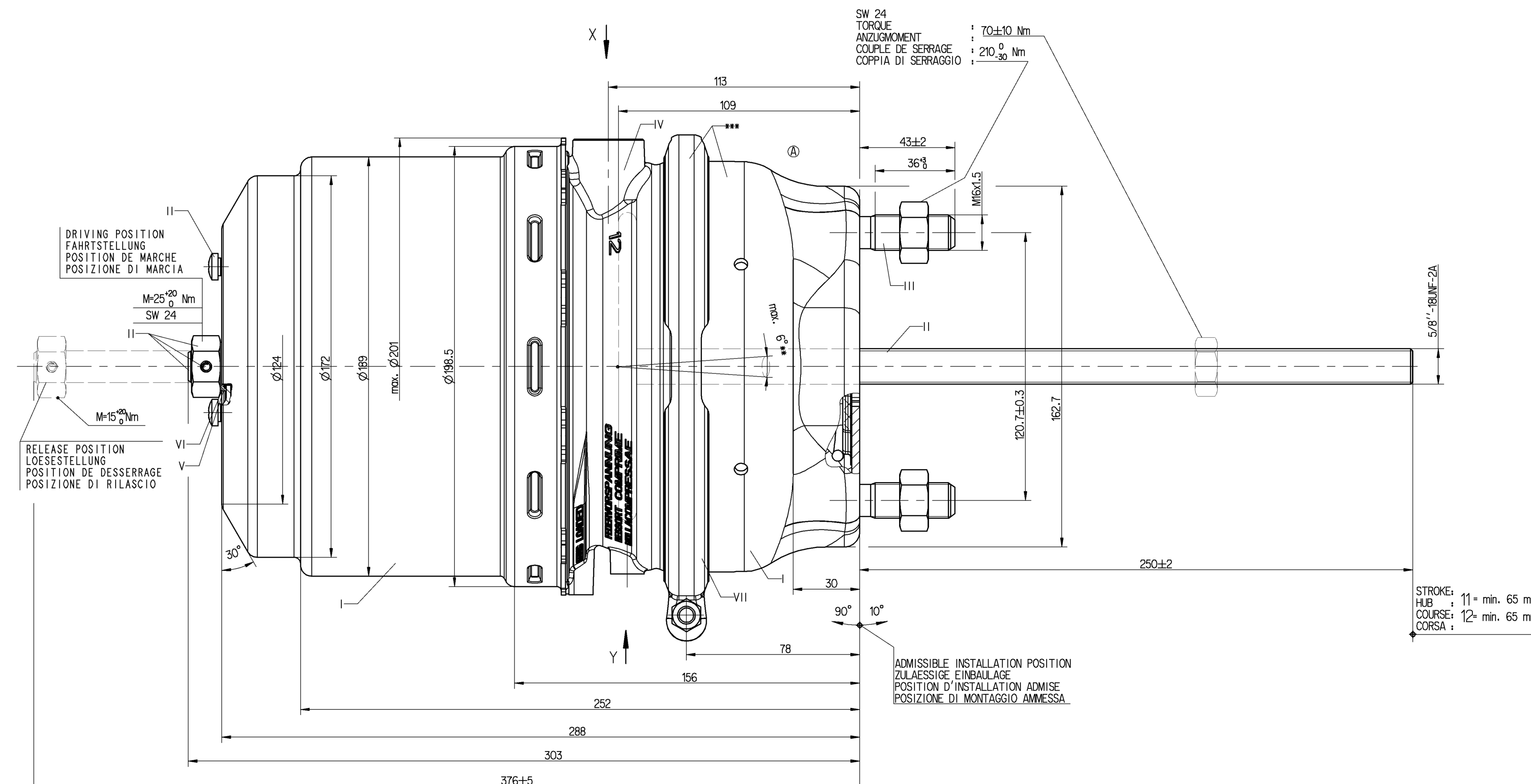
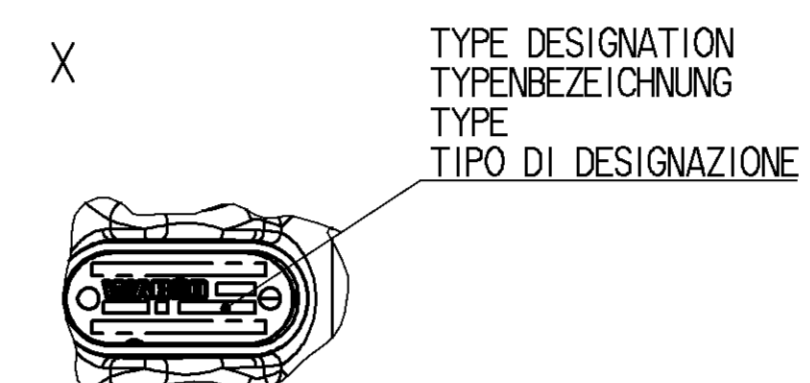
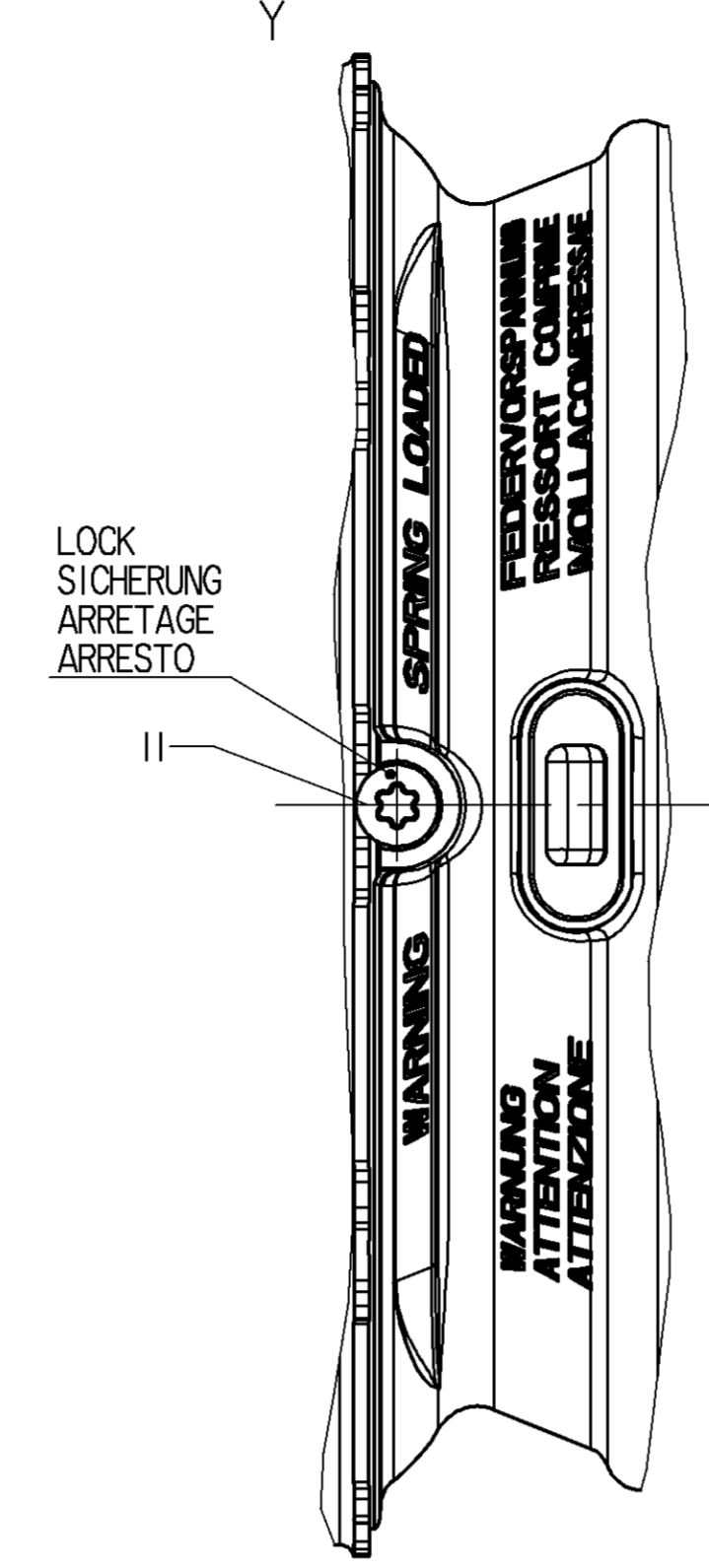
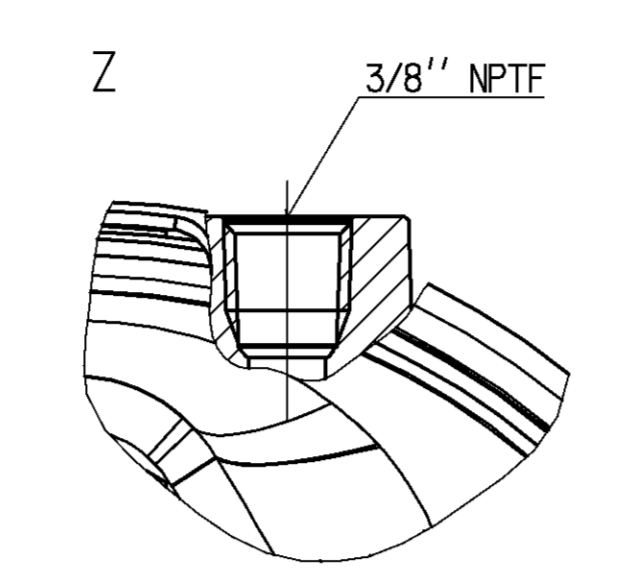
THERMAL RANGE OF APPLICATION :
 THERMISCHER ANWENDUNGSBEREICH : -40°C...+80°C
 BARRÉE D'APPLICATION TERMIQUE :
 CAMPO DI APPLICAZIONE TERMICA :

PORT : SERVICE BRAKING SYSTEM, WORKING PRESSURE : Pe max. = 10.2 bar (TEMPORARILY : Pe max. = 13 bar)
 ANSCHLUSS : 11 BETRIEBSBREMSENANLAGE, BETRIEBSDRUCK : (KURZZEITIG : Pe max. = 13 bar)
 ORIFICE : DISPOSITIF DE FREINAGE DE SERVICE, PRESSION D'UTILISATION : (DE COURTE DUREE : Pe max. = 13 bar)
 ORIFIZIO : DISPOSITIVO DI FRENATURA DI SERVIZIO, PRESSIONE DI ESERCIZIO : (BREVE TEMPO SOLO : Pe max. = 13 bar)

PORT : SPRING BRAKE CYLINDER, WORKING PRESSURE : Pe max. = 8.5 bar (TEMPORARILY : Pe max. = 11 bar)
 ANSCHLUSS : 12 FEDERSPEICHERZYLINDER, BETRIEBSDRUCK : (KURZZEITIG : Pe max. = 11 bar)
 ORIFICE : CYLINDRE A RESSORT, PRESSION D'UTILISATION : (DE COURTE DUREE : Pe max. = 11 bar)
 ORIFIZIO : CILINDRO A MOLLA, PRESSIONE DI ESERCIZIO : (BREVE TEMPO SOLO : Pe max. = 11 bar)



- OPEN BREATHER HOLE
OFFEN ATMUNGSBOHRUNG
VERT TROU RENIFLEUR
APERTO FORO RESPIRATORE
- DEFLECTION : AUSLENKUNG : 6° AT STROKE BEI HUB A COURSE
DEFLICTION : DEVIATIONE :
- DELIVERY ANLIEFERUNG LIVRAISON FORNITURA
- RELEASE POSITION LOESESTELLUNG POSITION DE DESSERRAGE POSITIONE DI RILASCIO
- DRIVING POSITION FAHRTSTELLUNG POSITION DE MARCHE POSITIONE DI MARCIA



GENERAL SPECIFICATION JED-334-0

PROBESCHÄFTIGUNG :
 DATE :
 SIGNATURE :
 DATE :
 SIGNATURE :
 TRISTOP® - CYLINDER
 TRISTOP® - ZYLINDER
 CILINDRO-TRISTOP®
 CILINDRO-TRISTOP®

30/30

925 492 205 0

WABCO

30/30

605 1/1