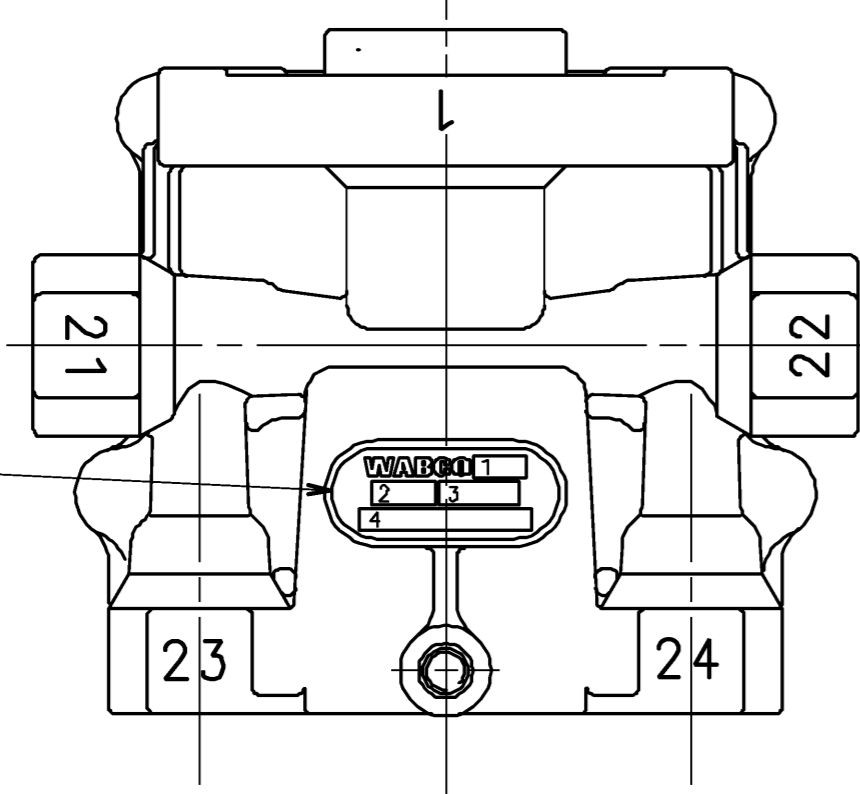
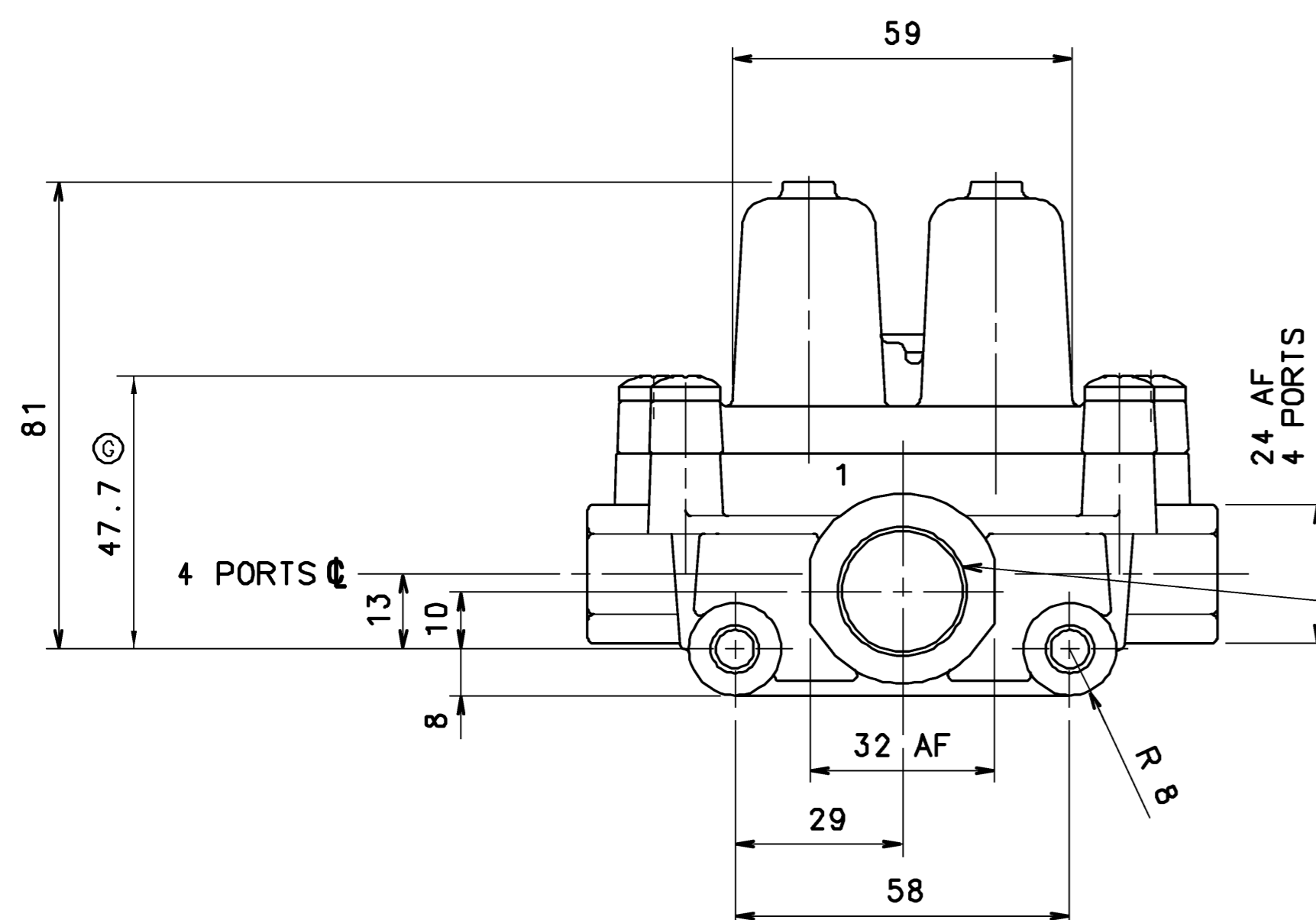
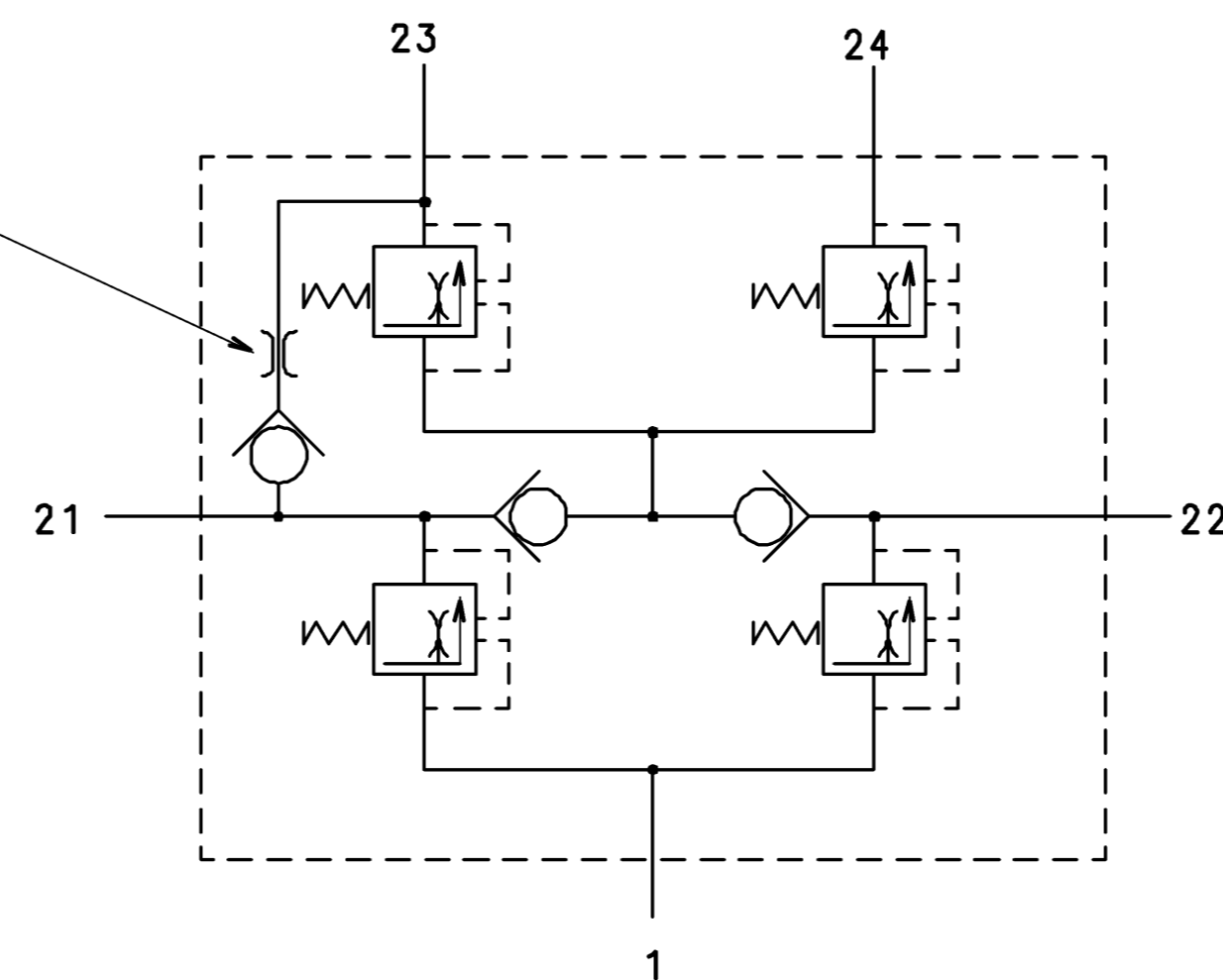


LABEL MARKED WITH :

1. PRODUCTION PLANT
2. DATE OF MANUFACTURE
3. REVISION LEVEL
4. PART NUMBER



Ø 0.80 ± 0.00
 -0.50 μ
 MAX FLOW=35 l/min
 AT p=8.0 bar



PORT 1 INLET
 1/2 - 14 DRYSEAL P.T.F.
 (S.A.E. SHORT)
 MAX APPLIED TORQUE 55 Nm.

CONNECTIONS
 ANSCHLUESSE
 ORIFICES
 ORIFIZI

SUPPLY
 LUFTEINTRITT
 ALIMENTATION
 ALIMENTAZIONE

21- CIRCUIT 1
 KREIS 1
 CIRCUIT 1
 CIRCUITO 1

22- CIRCUIT 2
 KREIS 2
 CIRCUIT 2
 CIRCUITO 2

23- CIRCUIT 3
 KREIS 3
 CIRCUIT 3
 CIRCUITO 3

24- CIRCUIT 4
 KREIS 4
 CIRCUIT 4
 CIRCUITO 4

ADMISSIBLE TEMPERATURES.
 THERMISCHER ANWENDUNGSBEREICH.
 TEMPERATURE DE SERVICE
 TEMPERATURA D'ESERCIZIO.

-40°C TO +90°C

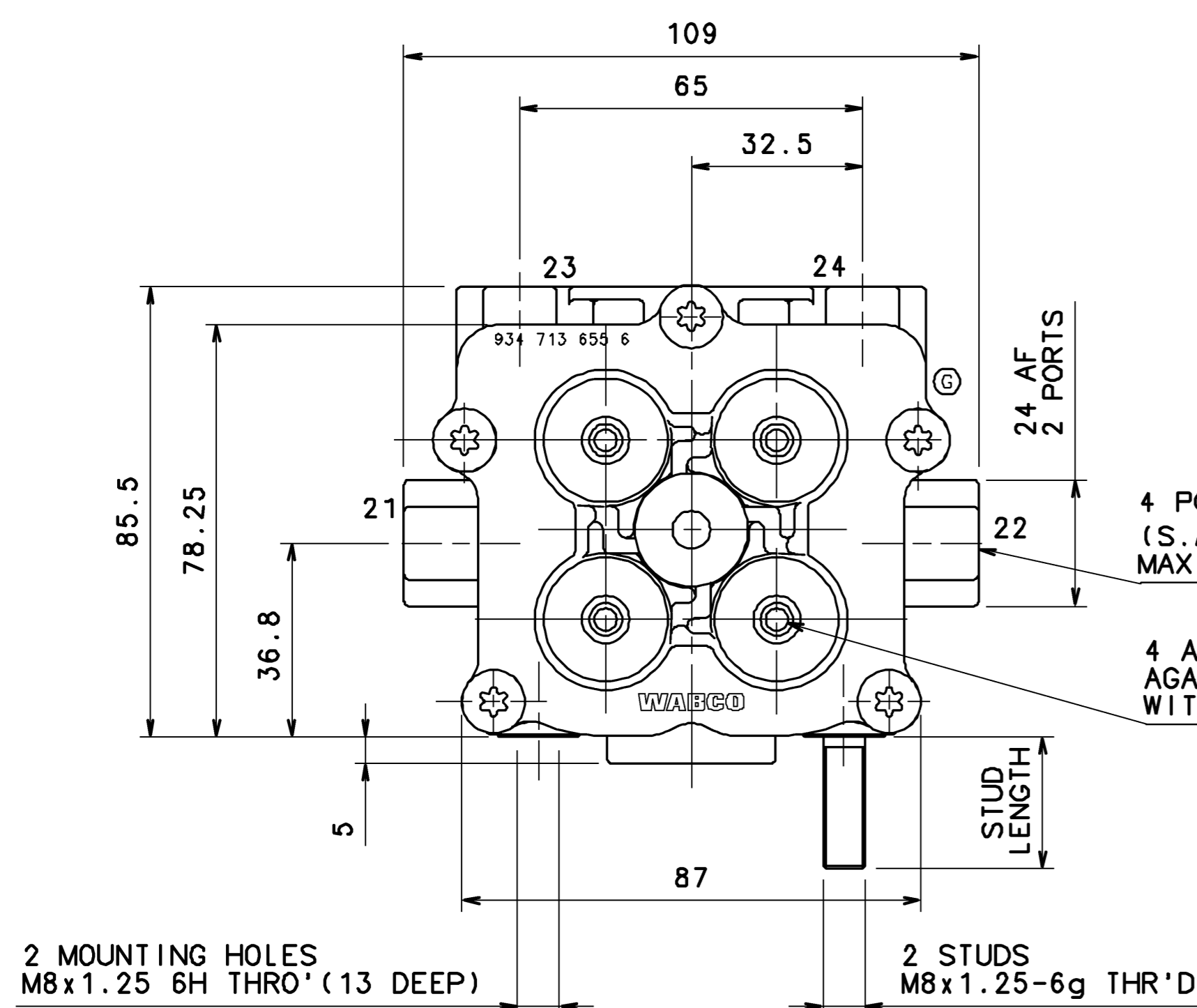
SERVICE PRESSURE.
 BETRIEBSDRUCK.
 PRESSION DE SERVICE.
 PRESSIONE D'ESERCIZIO.

MAX 13 bar.

MEDIUM AIR
 MEDIUM LUFT.
 MILIEU AIR.
 FLUIDO ARIA.

4 PORTS 3/8 - 18 DRYSEAL P.T.F.
 (S.A.E. SHORT)
 MAX APPLIED TORQUE 35 Nm.

4 ADJUSTERS SECURED,
 AGAINST TAMPERING,
 WITH LOCTITE AFTER TEST.



DETAIL A:

DETAIL B:

DRAWING PRODUCED ON CADAM
 MANUAL CHANGES PROHIBITED

DIMENSIONS IN MILLIMETRES

PART NO INC REV LEVEL	OPENING PRESSURE (DYNAMIC) P ¹ OEFFNUNGSDRUCK (DYNAMISCH) PRESSION DE OUVERTURE (DYNAM) PRESSIONE DI APERTURA (DINAM)				MOUNTING STYLE	
	21	22	23	24		
934 714 101 0 C	6.4 ± 0.3		5.9 ± 0.3	5.9 ± 0.3	DETAIL B	25 mm STUD
934 714 102 0 C	6.9 ± 0.3		6.9 ± 0.3	6.9 ± 0.3	DETAIL B	15.5 mm STUD
934 714 103 0 C	6.9 ± 0.3		6.9 ± 0.3	6.9 ± 0.3	DETAIL B	25 mm STUD
934 714 104 0 C	7.7 ± 0.3		7.7 ± 0.3	7.7 ± 0.3	DETAIL B	20 mm STUD
934 714 105 0 C	6.9 ± 0.3		6.9 ± 0.3	6.9 ± 0.3	DETAIL B	20 mm STUD
934 714 106 0 C	7.2 ± 0.3		5.7 ± 0.3	5.7 ± 0.3	DETAIL A	TAPPED HOLES
934 714 108 0 C	8.0 ± 0.3		8.0 ± 0.3	8.0 ± 0.3	DETAIL B	15.5 mm STUD
934 714 113 0 C	6.9 ± 0.3		6.9 ± 0.3	6.9 ± 0.3	DETAIL A	TAPPED HOLES
934 714 114 0 D	6.9 ± 0.3		7.2 ± 0.3	7.2 ± 0.3	DETAIL A	TAPPED HOLES
934 714 116 0 C	6.6 ± 0.3		6.6 ± 0.3	6.6 ± 0.3	DETAIL B	25 mm STUD
934 714 117 0 C	7.2 ± 0.3		6.2 ± 0.3	6.2 ± 0.3	DETAIL A	TAPPED HOLES
934 714 118 0 C	6.7 ± 0.3		6.7 ± 0.3	6.7 ± 0.3	DETAIL B	15.5 mm STUD
934 714 137 0 E	6.2 ± 0.3		6.2 ± 0.3	6.2 ± 0.3	DETAIL A	TAPPED HOLES

General Specification: JED-334-0		Copyright WABCO		WABCO	
Further Technical Data:		Beta		Signature	
Doc. Code:		Drawn		20.04.2009 CHAMOT	
Sheet:		Checked		20.04.2009 MACH	
General Tolerances JED-251		MACH		Esercizi	
Range of Nominal Dimensions (± mm)		MACH		MACH	
Class	1) ≤ 50	> 50 < 180	> 180 < 400	> 400	Δ
Fine	0.5	1.0	1.5	2.0	
Medium	1.0	2.0	3.0	4.0	±3*
Coarse	2.0	3.5	5.0	6.5	
Tapped Holes acc.		MACH		MACH	
1) Tolerance Class Applied Crossmarked		A 1		CCD	
Material No.		934 714 100 0		005 ML 1/1	
EDN-No.		121685		2G 510	
Revision		2G		510	
Tech. Resp.					
Replacement Part					