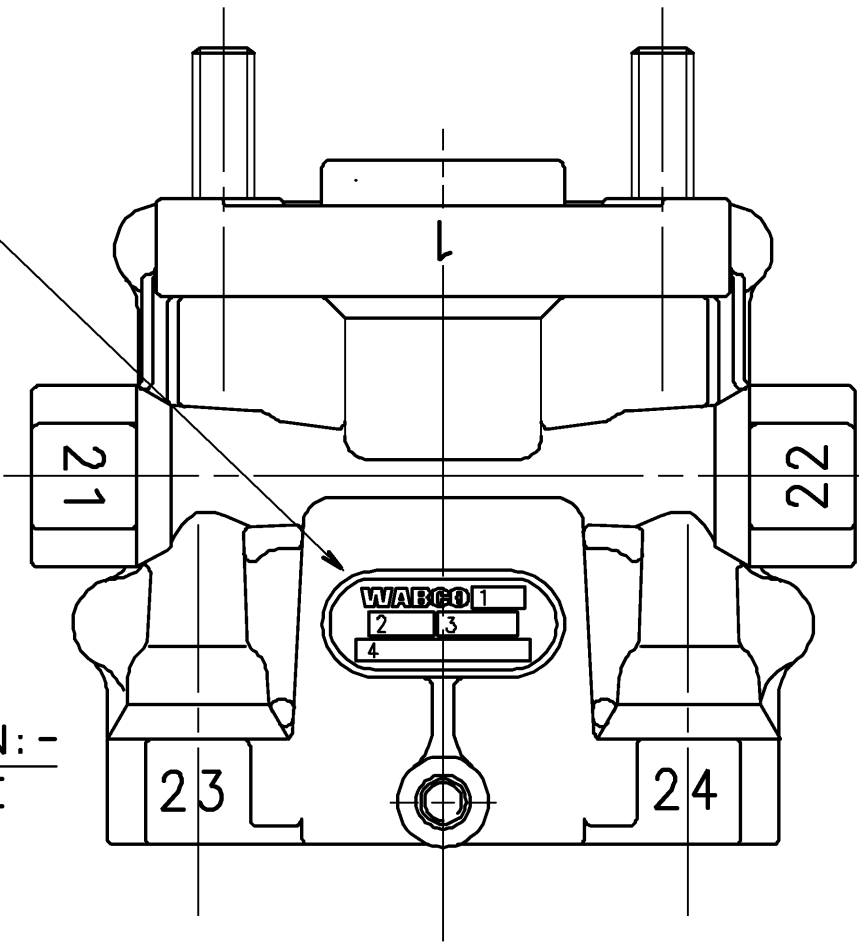
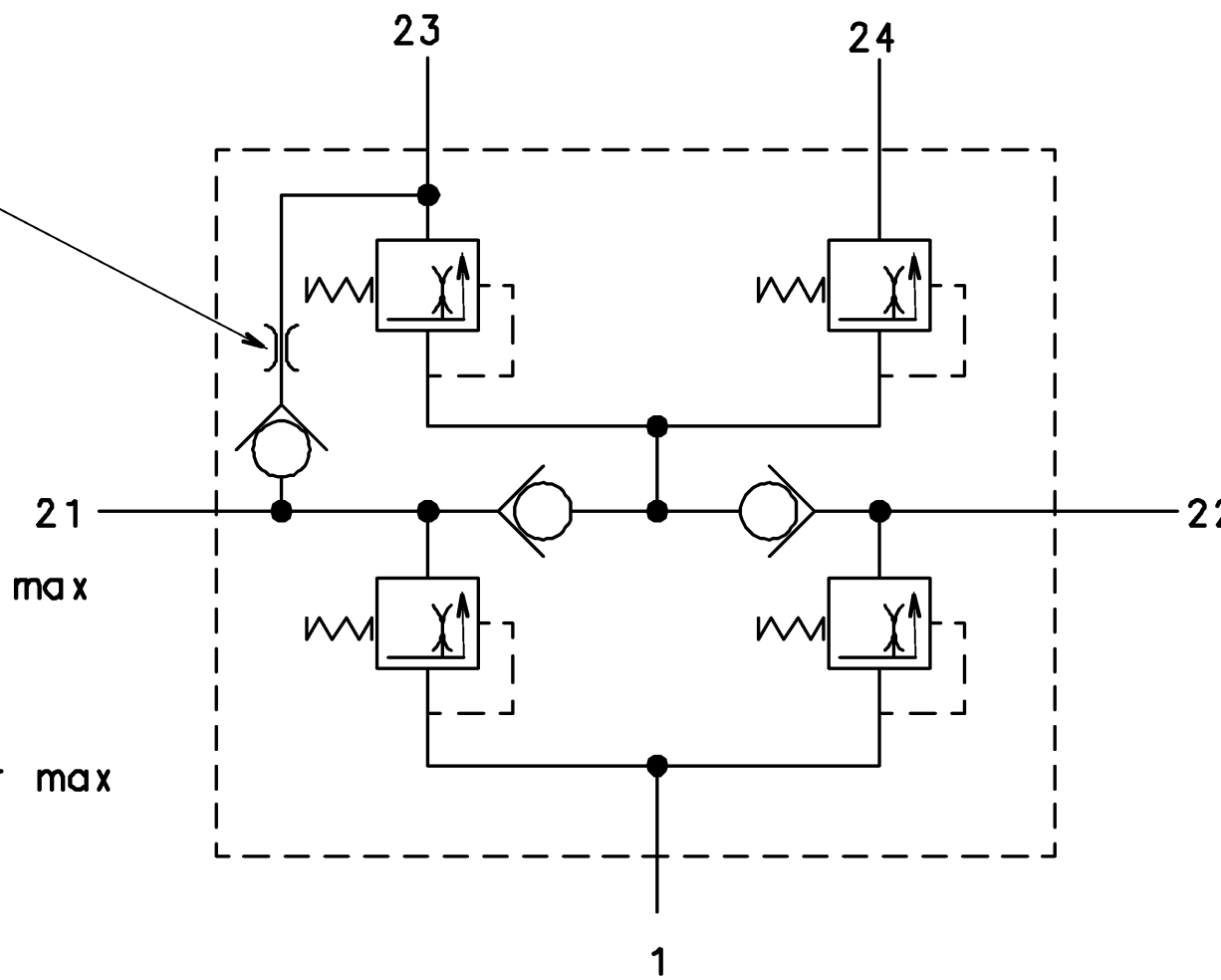


LABEL MARKED WITH :-  
 1.PRODUCTION PLANT  
 2.DATE OF MANUFACTURE  
 3.REVISION LEVEL  
 4.PART NUMBER  
 SCHILD MIT AUFSCHRIFT:-  
 1.FERTIGUNGSWERK  
 2.HERSTELLDATUM  
 3.ANDERUNGSSTAND  
 4.TEILE NR.  
 ETIQUETTE COMPORTANT :-  
 1.USINE DE PRODUCTION  
 2.DATE DE FABRICATION  
 3.NIVEAU DE REVISION  
 4.NO. DE PIECE  
 ETICHETTA CONTRASSEGATA CON:-  
 1.STABILIMENTO DI PRODUZIONE  
 2.DATA DI FABBRICAZIONE  
 3.LIVELLO DI REVISIONE  
 4.PARTICOLARE NO.



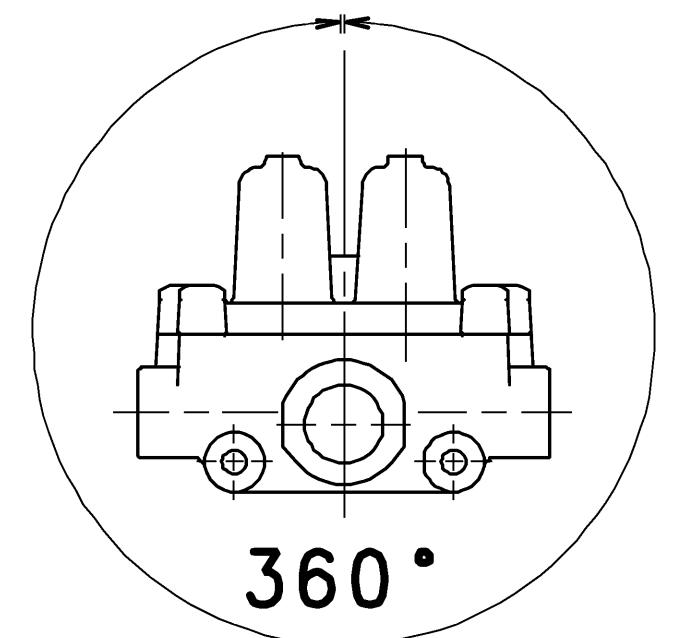
FLOW RATE = 16-35 l/min  
 AT P<sub>23</sub>=8, P<sub>21</sub>=0 bar  
 WHEN P<sub>21</sub> DROPS TO ZERO  
 # RETAINED P<sub>23</sub>=1bar max  
 DURCHFLOSSMENGE = 16-35 l/min  
 BEI P<sub>23</sub>=8, P<sub>21</sub>=0 bar  
 # WENN P<sub>21</sub> AUF NULL ABFALLT  
 GESICHERTER DRUCK P<sub>23</sub>=1 bar max  
 DEBIT = 16-35 l/min  
 SOUS P<sub>23</sub>=8, P<sub>21</sub>=0 bar  
 # SI P<sub>21</sub> TOMBE A ZERO  
 LA PRESSION MAINTENUE A P<sub>23</sub>=1 bar max  
 PORTATA = 16-35 l/min  
 PER P<sub>23</sub>=8, P<sub>21</sub>=0 bar  
 # SE P<sub>21</sub> CALC A ZERO  
 LA PRESSIONE MANTENUTA A P<sub>23</sub>=1 bar max



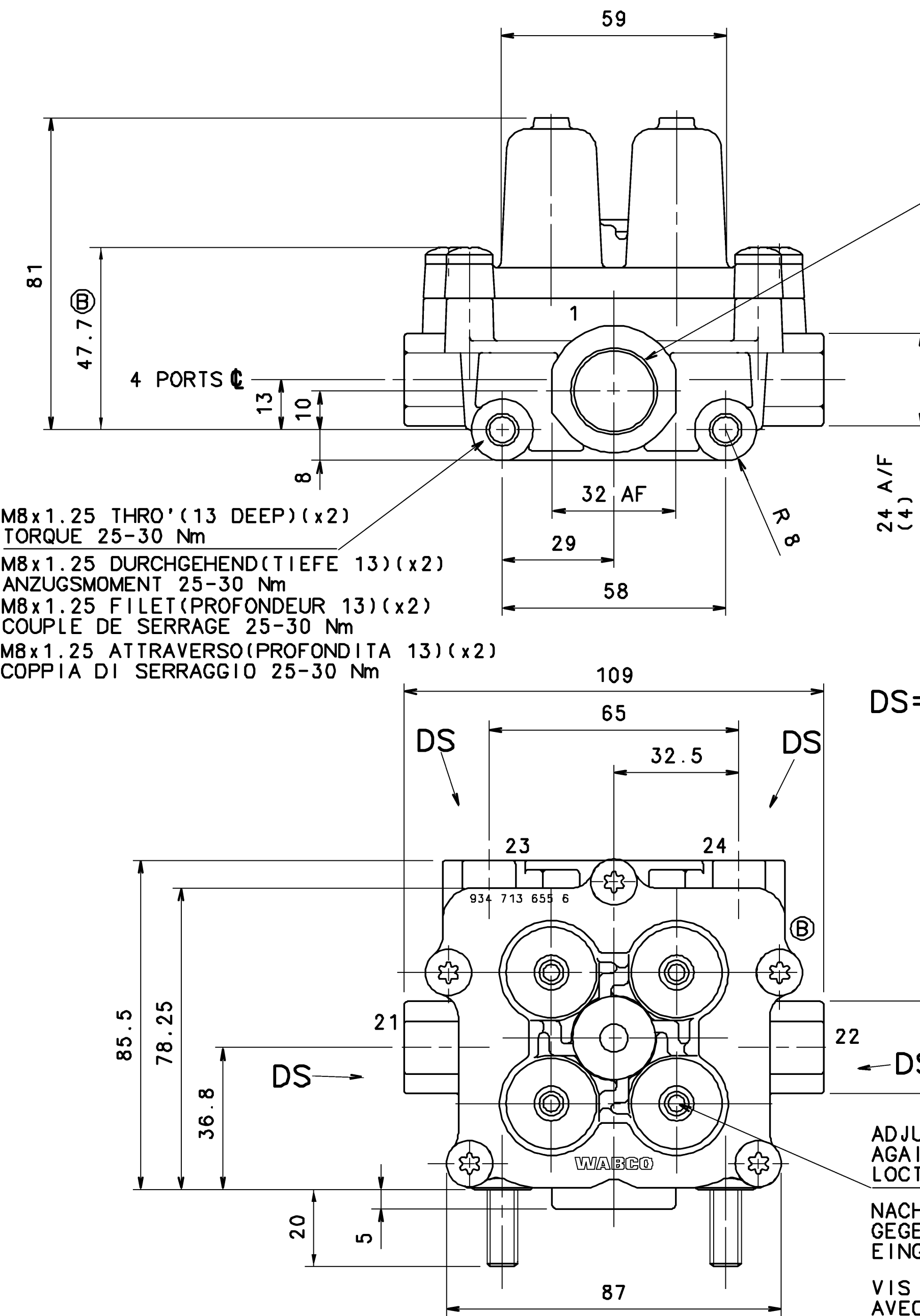
CONNECTIONS  
 ANSCHLUESSE  
 ORIFICES  
 ORIFIZI

21- CIRCUIT 1 KREIS 1 CIRCUIT 1 CIRCUITO 1	22- CIRCUIT 2 KREIS 2 CIRCUIT 2 CIRCUITO 2
23- CIRCUIT 3 KREIS 3 CIRCUIT 3 CIRCUITO 3	24- CIRCUIT 4 KREIS 4 CIRCUIT 4 CIRCUITO 4

SUPPLY  
 LUFTEINTRITT  
 ALIMENTATION  
 ALIMENTAZIONE



VALVE MAY BE MOUNTED AT ANY ANGLE  
 VENTIL KANN IN BELIEBIGER LAGE MONTIERT WERDEN  
 LA SOUPAPE PEUT ETRE INSTALLEE A N'IMPORTE QUEL ANGLE  
 VALVOLA MONTABILE A QUALSIASI ANGOLO



PORT 1  
 1/2-14 DRYSEAL PTF  
 SAE SHORT  
 TORQUE 55 Nm MAX.  
 ANSCHLUESSE 1  
 1/2-14 DRYSEAL PTF  
 SAE SHORT  
 ANZUGSMOMENT 55 Nm MAX.  
 ORIFICES 1  
 1/2-14 DRYSEAL PTF  
 SAE SHORT  
 COUPLE DE SERRAGE 55 Nm MAX.  
 ORIFIZI 1  
 1/2-14 DRYSEAL PTF  
 SAE SHORT  
 COPPIA DI SERRAGGIO 55 Nm MAX.  
 3/8-18 DRYSEAL PTF  
 SAE SHORT  
 TORQUE 35 Nm MAX.  
 3/8-18 DRYSEAL PTF  
 SAE SHORT  
 ANZUGSMOMENT 35 Nm MAX.  
 3/8-18 DRYSEAL PTF  
 SAE SHORT  
 COUPLE DE SERRAGE 35 Nm MAX.  
 3/8-18 DRYSEAL PTF  
 SAE SHORT  
 COPPIA DI SERRAGGIO 35 Nm MAX.

CORROSION PROTECTION:-  
 ALUMINIUM PARTS CHROMATED TO JED-259  
 SCREWS MECHANICALLY ZINC PLATED AND PASSIVATED (JED-256-4)  
 KORROSIONSSCHUTZ  
 ALUMINIUMTEILE CHROMIERT GEMASS JED-259  
 SCHRAUBEN MECHANISCH VERZINKT UND PASSIVIERT (JED-256-4)  
 PROTECTION ANTICORROSIVE  
 PIECES ALUMINIUM CHROMEES POUR JED-259  
 VIS MECANIQUEMENT ZINGUEES ET PASSIVEES (JED-256-4)  
 PROTEZIONE ANTICORROSIONE  
 PEZZI IN ALUMINIO CROMATI PER JED-259  
 VITI MECCANICAMENTE ZINCATE E PASSIVATE (JED-256-4)

PORTS ORIFICES	ANSCHLUESSE ATTACCHI	21	22	23	24
OPENING PRESSURE DYNAMIC OFFENUNGSDRUCK DYNAMISCH PRESSION DE OUVERTURE DYNAM PRESSIONE DI APERTURA DINAM	BAR	8.2 <sup>+0</sup> <sub>-0.3</sub>	8.2 <sup>+0</sup> <sub>-0.3</sub>	8.2 <sup>+0</sup> <sub>-0.3</sub>	8.2 <sup>+0</sup> <sub>-0.3</sub>
CLOSING PRESSURE DYNAMIC SCHLIESSDRUCK DYNAMISCH PRESSION DE FERMETURE DYNAM PRESSIONE DI CHIUSURA DINAM	BAR	≥ 6.5			
CLOSING PRESSURE STATIC AT FAILURE OF CIRCUIT .... SCHLIESSDRUCK STATISCH BEI AUSFALL VON KREIS .... PRESSION DE FERMETURE STATIQUE EN CAS DE DEFAILLANCE DU CIRCUIT .... PRESSIONE DI CHIUSURA STATICA IN CASO DI DIFETTO DEL CIRCUITO ....	BAR	0	≥ 6.0	#	≥ 6.0
		≥ 6.0	0	≥ 6.0	≥ 6.0
		≥ 6.0	≥ 6.0	0	≥ 6.0
		≥ 6.0	≥ 6.0	≥ 6.0	0

ADMISSIBLE TEMPERATURES.  
 THERMISCHER ANWENDUNGSBEREICH.  
 TEMPERATURE DE SERVICE -40°C TO +90°C  
 TEMPERATURA D'ESERCIZIO.

SERVICE PRESSURE.  
 BETRIEBSDRUCK. MAX 13 bar.  
 PRESSION DE SERVICE.  
 PRESSIONE D'ESERCIZIO.

MEDIUM AIR  
 MEDIUM LUFT.  
 MILIEU AIR.  
 FLUIDO ARIA.

ADJUSTING SCREWS SECURED AGAINST TAMPERING WITH LOCTITE AFTER TEST.

NACH PRUFUNG MIT LOCTITE GEGEN UNBEFUGTE EINGRIFFE GESICHERT

VIS DE REGLAGE FIXEES AVEC LOCTITE PAR SECURITE APRES ESSAI

VITI DI REGOLAZIONE FISSATE CONTRO MANOMISSIONE CON LOCTITE DOPO LE PROVE

DRAWING PRODUCED ON CADAM  
 MANUAL CHANGES PROHIBITED

DIMENSIONS IN MILLIMETRES

General Specification: JED-354-0		Copyright WABCO		<b>WABCO</b>	
Further Technical Data:		Date	20.04.2009	Drawn	CHAMOT
Doc. Code:	Sheet: 1	Checked			
General Tolerances JED-251		20.04.2009		MACH	
Range of Nominal Dimensions (± mm)		MACH			
Class	1)	< 50	> 50 < 180	> 180 < 400	> 400
Fine		0.5	1.0	1.5	2.0
Medium	X	1.0	2.0	3.0	4.0
Coarse		2.0	3.5	5.0	6.5
Tapped Holes acc.		A 1		CCD	
1) Tolerance Class Applied Crossmarked		ECC No.		121685	
		Revision		3B	
		Techs. Resp.		510	
		Material No.		934 714 146 0	
		Date of first issue		22.06.01	
		Dec. Code		005	
		Language		ML	
		Sheet		1/1	
		Replacement for			