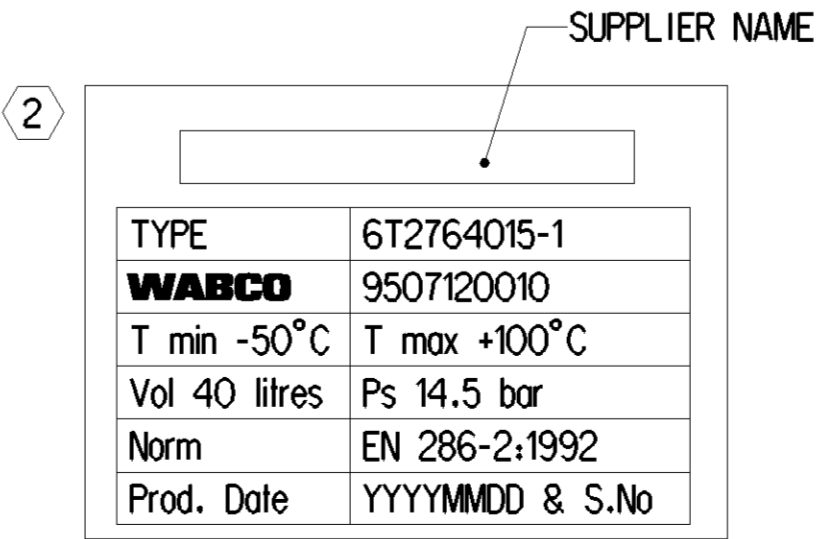


- ① METRIC PORT M22x1.5 ACCORDING TO ISO 4039-2
 - ② IDENTIFICATION LABEL
- GENERAL SPECIFICATION ACCORDING TO EN 286-2

SL.NO.		NOTES
1	CAPACITY	40 Litres
2	WORKING PRESSURE	14.5 bar
3	TEMPERATURE RANGE	-50°C TO +100°C
4	MATERIAL	STEEL
5	SURFACE PROTECTION/COLOR:	PAINT / BLACK
6	EXTERNAL SURFACE PROTECTION	480 HOURS NSS TEST ACC. DIN EN ISO 9227
7	PERMISSIBLE INSTALLATION	DRAIN VALVE SHOULD FACE DOWNWARDS IN VEHICLE ASSEMBLY



General Specification: JED-334-1 - Size ISO 14405 LP		Copyright WABCO®	
Further Technical Data:		Date	Signature
Doc. Code:	Sheet: To:	2020-08-12	Christosolomon D
General Tolerances JED-261		2020-08-13	
Range of Nominal Dimensions (± mm)		Rohit Kumar T	
Class	1) ≤ 50	> 50	> 180
Fine	0.5	1.0	1.5
Medium	1.0	2.0	3.0
Coarse	2.0	3.5	5.0
			> 400
			±3°
Mass	11.6	Scale	1:2
Size	kg	Scale	2:1
Tapped Holes acc. ISO 4039-2		Material No. 950 712 001 0	
1) Tolerance Class Applied Crossmarked		Date of first issue: 2020-08-13	
		Doc. Code	Language
		005	EN
		Revision	Techn. Resp.
		-	5060
		Replacement for	

Non e permesso copiare o riprodurre questo documento, ne utilizzare i contenuti a fini commerciali, senza permesso scritto dalla WABCO. E' vietata espressamente la ristampa o l'uso non autorizzato di questo documento. Toute reproduction ou utilisation de son contenu sans autorisation est interdite. Toute utilisation commerciale est interdite sans la permission écrite de la WABCO. Toute réimpression ou utilisation non autorisée sans la permission écrite de la WABCO est formellement interdite. All rights reserved. No part of this document may be reproduced or transmitted in any form or by any means electronic or mechanical, including photocopying and recording, or by any information storage or retrieval system, without prior written permission from WABCO. This document is the subject of copyright.