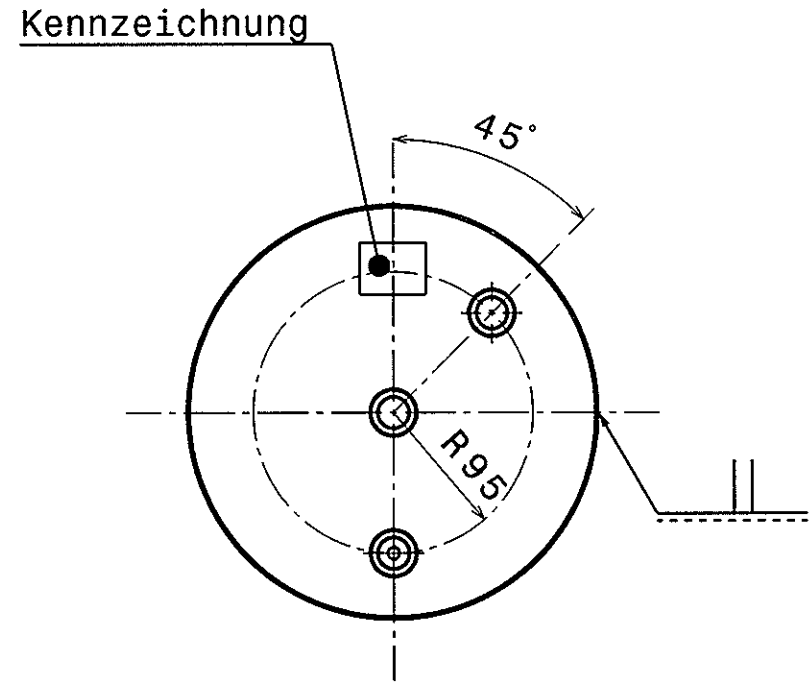
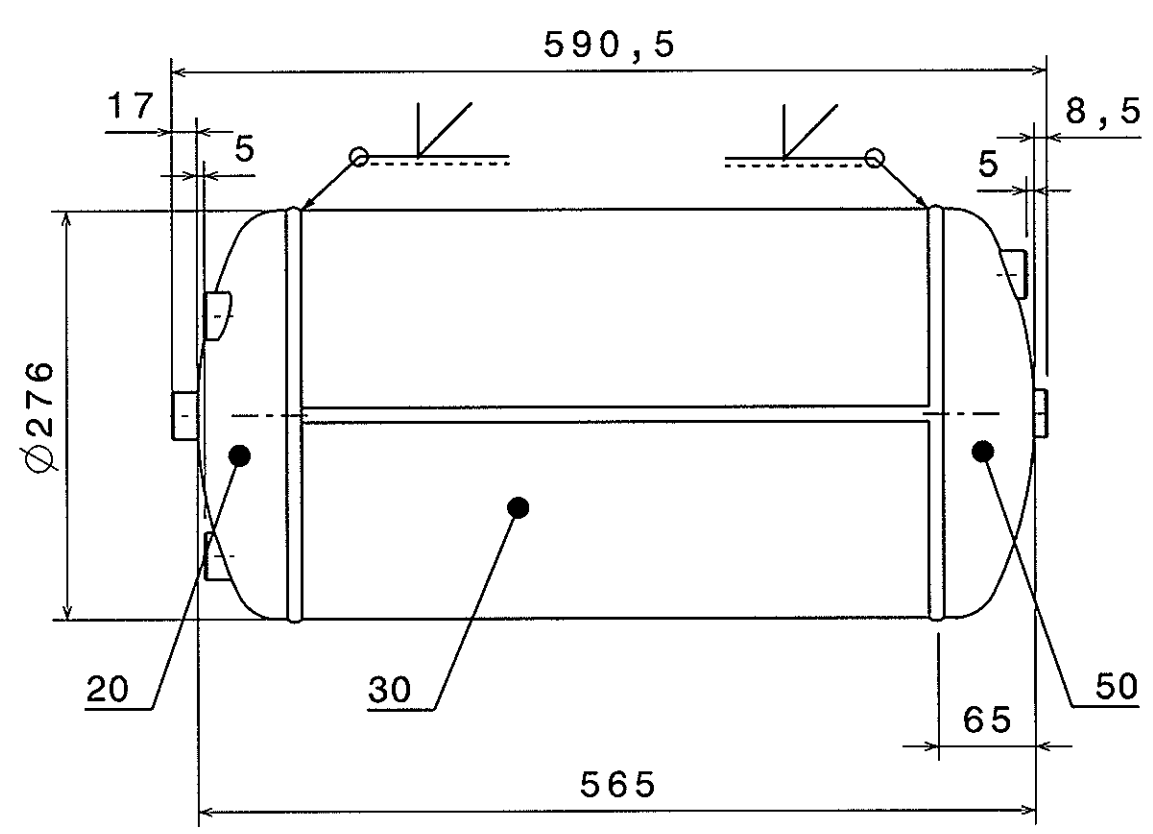
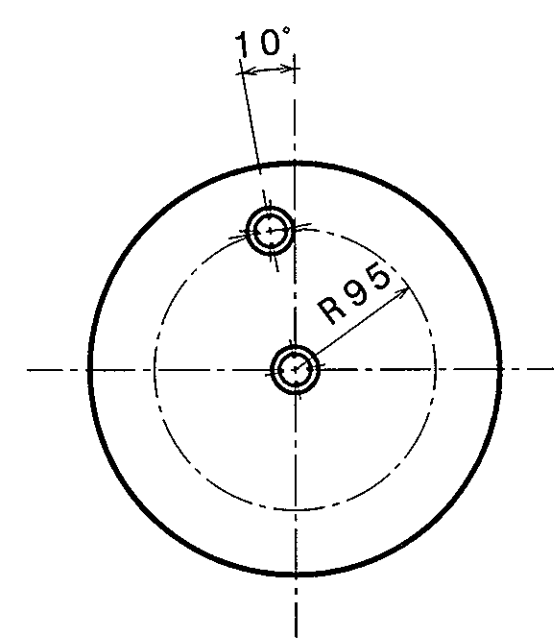


A

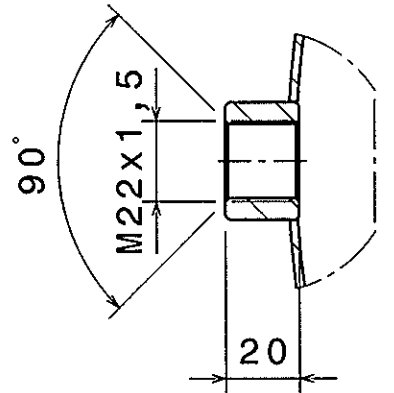
B

NON E' PERMESSO CONCESSIONE IN TUTTI O A PORTAZIONE O DI QUALSIASI DOCUMENTO, NE UTILIZZARE IL CONTENUTO O DEL PERLO COME A TUTTI SENZA AUTORIZZAZIONE ESPLICITA. OGNI INFRAZIONE COSTITUISCE UN DELINQUENTE AGITO E COMPLETO IL RISCHIO DI SANZIONI PENALI. E' FATTA RISERVA DI TUTTI I DIRITTI DERIVANTI DA COPERTURA DI QUESTO DOCUMENTO. IT TO OTHERS AND THE USE OR COMMUNICATION OF THE CONTENTS THEREOF ARE FORBIDDEN WITHOUT EXPRESS AUTHORITY. VIOLATION OF THIS RESTRICTION WILL CONSTITUTE AN OFFENSE UNDER THE PATENT ACT. ALL RIGHTS ARE RESERVED FOR THIS DOCUMENT. IN THE EVENT OF A VIOLATION OF THE RESTRICTIONS OF THIS DOCUMENT, THE SUBJECT OF A PROSECUTION.

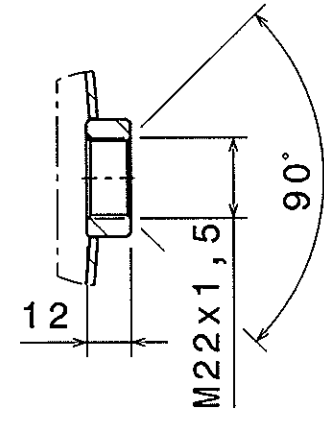
TOUTE COMMUNICATION OU REPRODUCTION DE CE DOCUMENT, TOUTE EXPLICATION OU COMMUNICATION DE SON CONTENU, NI SON INTERET NI SAUF AUTORIZZAZIONE ESPLICITE. TOUT MANQUEMENT A CETTE REGLE CONSTITUE UN ABUS DE DROIT ET COMPLETO IL RISCHIO DE SANCTIONS PENALES. E' FATTA RISERVA DE TOUS DROITS DE PROPRIETE INDUSTRIELLE. IL RISCHIO DI SANZIONI PENALI. E' FATTA RISERVA DI TUTTI I DIRITTI DERIVANTI DA COPERTURA DI QUESTO DOCUMENTO. IT TO OTHERS AND THE USE OR COMMUNICATION OF THE CONTENTS THEREOF ARE FORBIDDEN WITHOUT EXPRESS AUTHORITY. VIOLATION OF THIS RESTRICTION WILL CONSTITUTE AN OFFENSE UNDER THE PATENT ACT. ALL RIGHTS ARE RESERVED FOR THIS DOCUMENT. IN THE EVENT OF A VIOLATION OF THE RESTRICTIONS OF THIS DOCUMENT, THE SUBJECT OF A PROSECUTION.



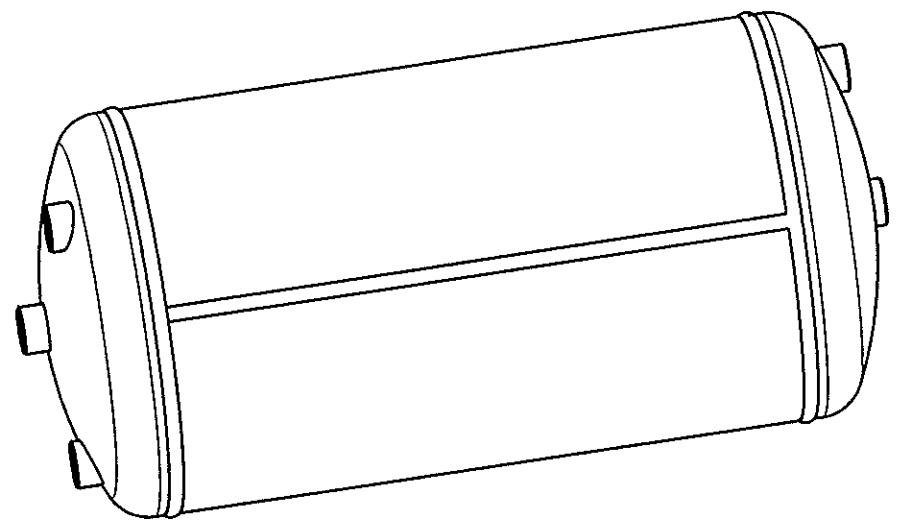
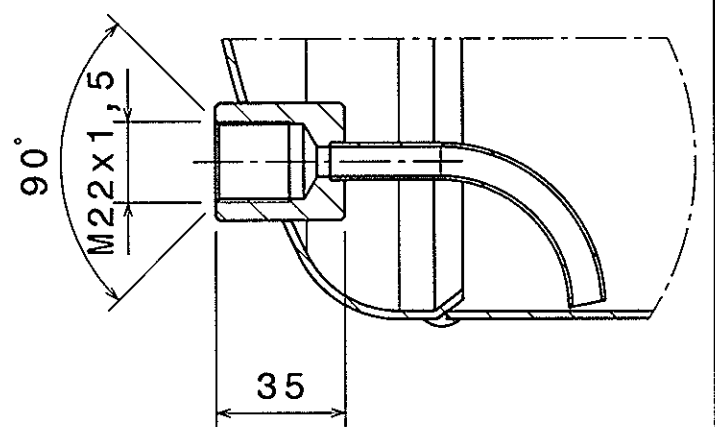
Gewinding 3x
Maßstab: 1:2



Gewinding 1x
Maßstab: 1:2



Gewinding mit Rohrbogen
Maßstab: 1:2



Kennzeichnung (marking)
Etikett: (Pos. 10)
Herstellerwerk
LinnemannSchnetzer
Typ: WABCO 950 730 006 0
Typ: 112287
Serie: #-# Ind.:#
Tmin/max: -50/100 °C
V: 30,0 L Ps: 14,5 bar
EN 286-2:1992
Baujahr: #### C####
Jahreszahl
Kennnummer der Prüfstelle

Spezifikationen	
Regelwerk (norm/standard)	EN 286-2
Prüfdruck (test pressure)	Ph 1,5 x Ps bar
Berechnungsbeiwert (calc. correction value)	Kc 1
Wanddicke Boden/Mantel/Z-Boden	Smin 2,0/2,0 mm
Schweißverfahren (welding processes)	nach den gültigen Verfahrensprüfungen (in acc. with the valid process tests)
Oberflächenschutz innen (internal) Lack (surface treatment) außen (external) EP-Pul.	rot-br min 25 µm Pos.-Nr.: 90 schwarz min 60 µm Pos.-Nr.: 100

Allgem. Toleranzangabe: EN ISO 13920-C		Maßstab: 1:5	Gewicht: ca. 9,7 kg
Material: P275SL, EN 10207		Werkszeugnis EN 10204-2.2	
Benennung: Druckluftbehälter (air pressure vessel)		Duchm.: 276 mm	Volumen: 30,0 L
Zust. Änderung LS Datum Name		Ps: 14,5 bar	
Zeichnungs-Nr.: 112287		Kunde: WABCO	Kunden-Nr.: 950 730 006 0
Ers. f.: XXXXXX		EDV Nr.: 112287	

ORIGINAL-BLATTFORMAT: DIN A3

LINNEMANNSCHNETZER PART No. 112287

GENERAL SPECIFICATION: JED-334-0		Pro/ENGINEER DRAWING COPYRIGHT		WABCO	
FURTHER TECHNICAL DATA:		DATE: 19-Sep-02		SIGNATURE: J.M.Hall	
DOC. CODE: SHEET: TO		DRAWN: 19-Sep-02		CHECKED: N.TINKLER	
GENERAL TOLERANCES		EXPERT CODE: 319		PRODUCT IDENTIFICATION NO. 950 730 006 0	
RANGE OF NOMINAL DIMENSIONS (± mm)		MASS: 9.7 KG		SCALE: 1:5	
CLASS 1)	≤ 50	> 50 ≤ 180	> 180 ≤ 400	> 400	±1°
FINE	0.5	1.0	1.5	2.0	
MEDIUM	1.0	2.0	3.0	4.0	
COARSE	2.0	3.5	5.0	6.5	
TAPPED HOLES ACC. ISO 4039 / JED-152		302200 - D 17/09/02		FUNCTION CODE: 5060	
1) TOLERANCE CLASS APPLIED CROSSMARKED		DCN-NO. REV. DATE		SHAPE CODE: 003	
				REPLACEMENT FOR	

A

B

C

D

Drw.: 95073000600 pdm+tr eh?

Mod.: MODEL NAME pdm+tr eh?