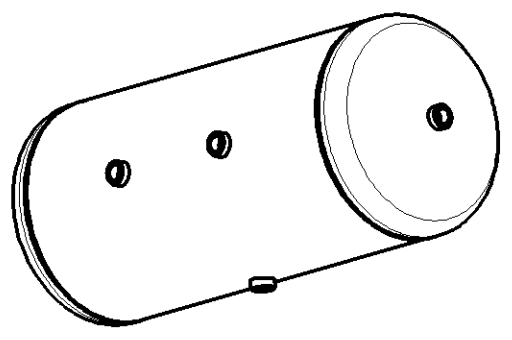
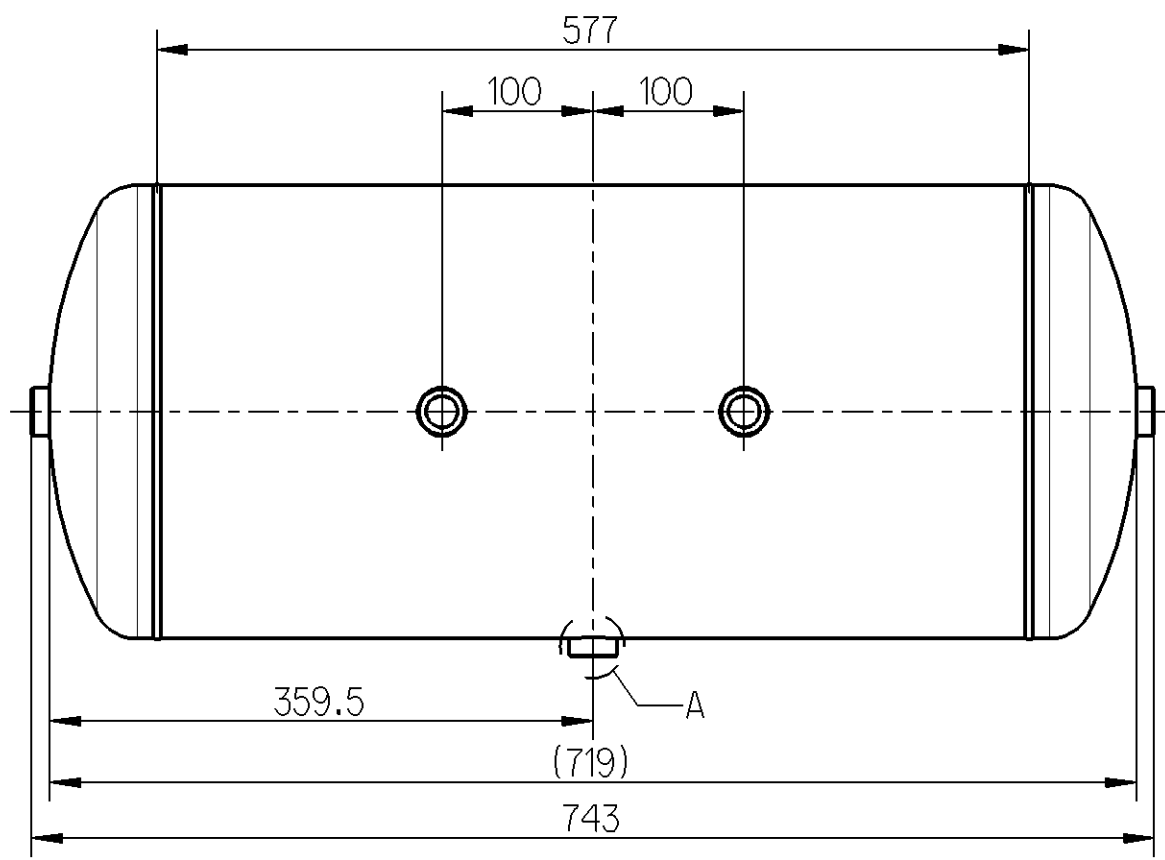
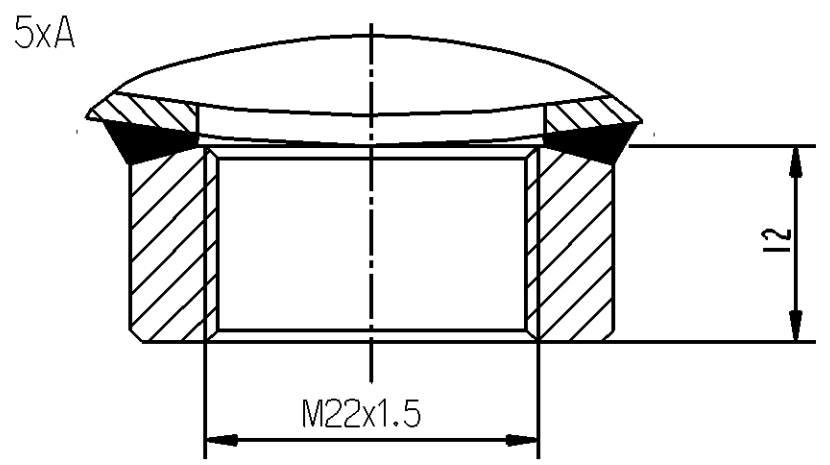


Non e permesso consegnare a terzi o riprodurre questo documento, ne utilizzare il contenuto o renderlo comunque noto a terzi senza autorizzazione esplicita. Ogni infrazione costituira un evidente abuso e comportera il risarcimento dei danni subiti. E' fatta riserva di tutti i diritti derivanti da brevetti o modelli.

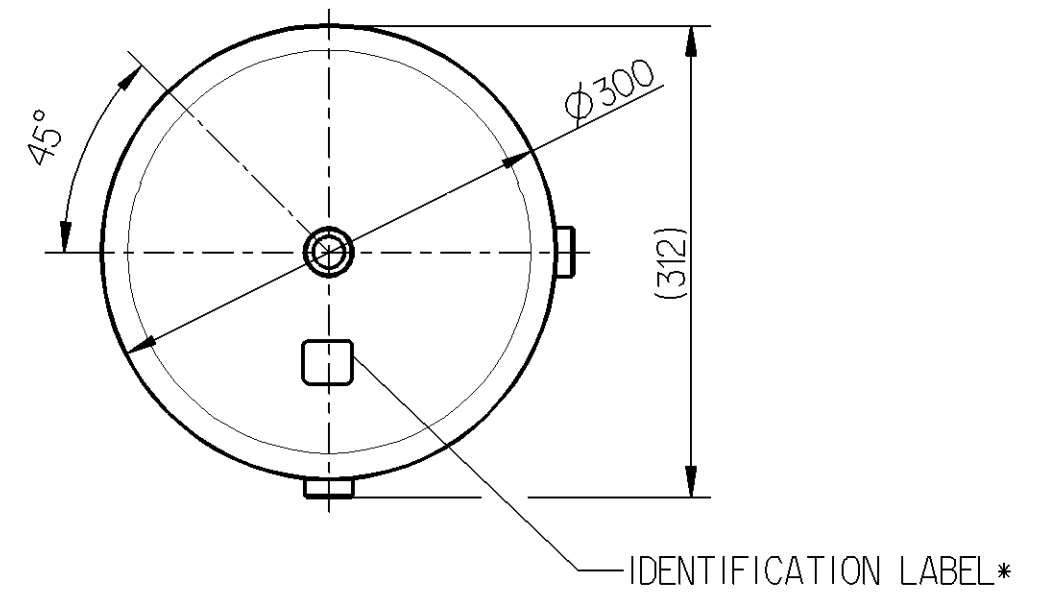
Copying of this document and giving it to others and the use or communication of the contents thereof, are forbidden without express authority. Contravention of this restriction will constitute an evident abuse and result in a liability to the payment of damages. All rights are reserved in the event of the grant of patent or registration of a utility model or design. This document is the subject of copyright.

Toute communication ou reproduction de ce document, toute exploitation ou communication de son contenu sont interdites, sauf autorisation expresse. Tout manquement a cette regle constitue un abus evident et expose son auteur au versement de dommages et interets. Tous droits de propriété industrielle reserves, notamment en matiere de brevets et de modèles.

Weitergabe sowie Vervielfaeltigung dieser Unterlage, Verwertung und Mitteilung ihres Inhalts nicht gestattet, soweit nicht ausdrücklich zugestanden. Zuwiderhandlungen stellen einen offensichtlichen Missbrauch dar und verpflichten zu Schadensersatz. Alle Rechte fuer den Fall der Patenterteilung oder Gebrauchsmuster-Eintragung vorbehalten.



VOLUME: VOLUMEN: VOLUME: VOLUME:		45 L
WORKING PRESSURE: BETRIEBSDRUCK: PRESSION D'UTILISATION: PRESSIONE DI LAVORO:	Ps	12,5 BAR
TEMPERATURE RANGE: TEMPERATURBEREICH: PLAGE DE TEMPERATURES: CAMPO DI TEMPERATURA:	MIN/MAX	-50/100 °C
MATERIAL: WERKSTOFF: MATIERE: MATERIALE:		STEEL STAHL ACIER ACCIAIO
SURFACE PROTECTION/COLOR: OBERFLACHENSCHUTZ/FARBE: PROTECTION DE SURFACE/COULEUR: PROTEZIONE SUPERFICI/COLORE:		PAINT/BLACK LACK/SCHWARZ PEINTURE/NOIR VERNICE/NERO



* ACCORDING TO GENERAL SPECIFICATION (EN 286-2)

General Specification: JED-334-0, EN 286-2		Copyright WABCO®		WABCO				
Further Technical Data:		Date	Signature					
Doc. Code:	Sheet: To	2011-07-06	Kapciuch	AIR RESERVOIR				
General Tolerances JED-261		Checked	Czapiewski					
Range of Nominal Dimensions (± mm)		Expert		Date of first issue: 2007-04-27				
Class 1)	≤ 50	> 50 ≤ 180	> 180 ≤ 400	> 400	Material No.	Doc.Code	Language	Sheet
Fine	0.5	1.0	1.5	2.0	950 845 001 0	005	ML	1/1
Medium	1.0	2.0	3.0	4.0				
Coarse	X 2.0	3.5	5.0	6.5	Mass	Scale	Techn. Resp.	
Tapped Holes acc. ISO 4039 / JED-152		13.9 KG	1:5	5060		Replacement for		
1) Tolerance Class Applied Crossmarked		Size	CAD System	ECN-No.	Revision	ECN-No.		
		A 3	Pro/E	155874	B	155874		