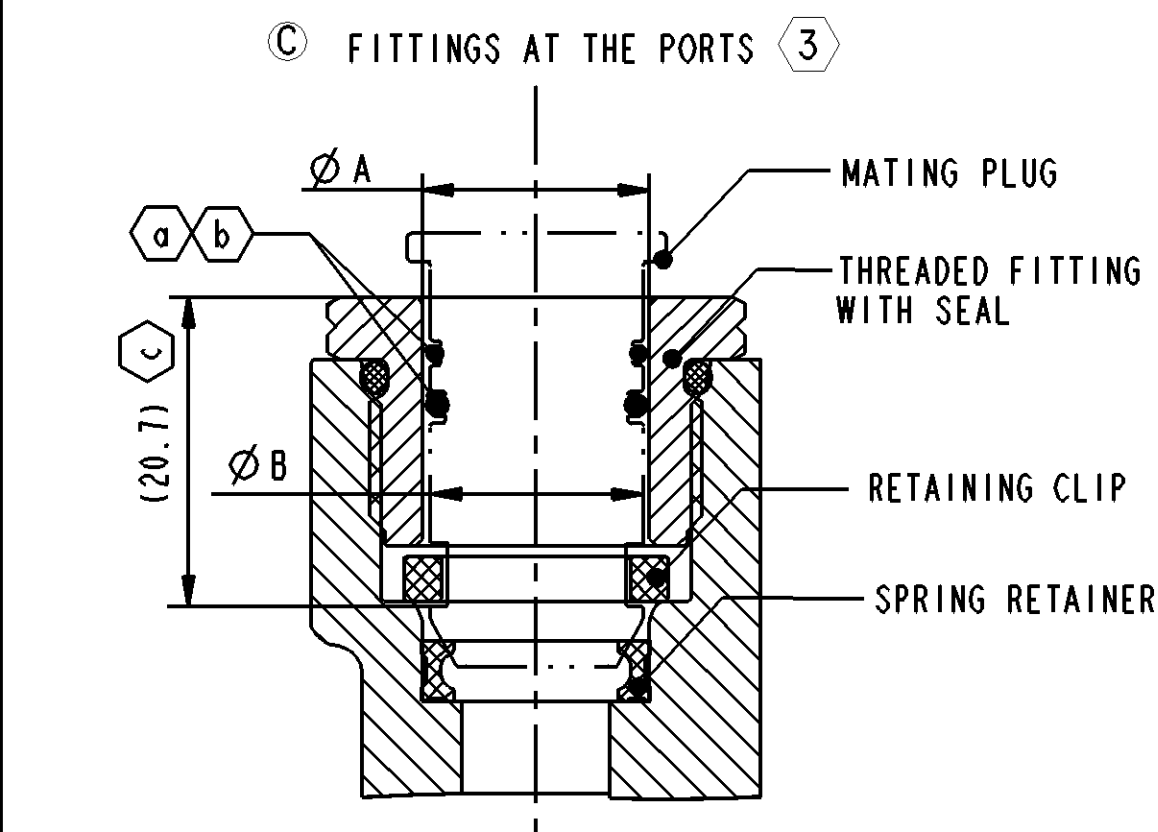
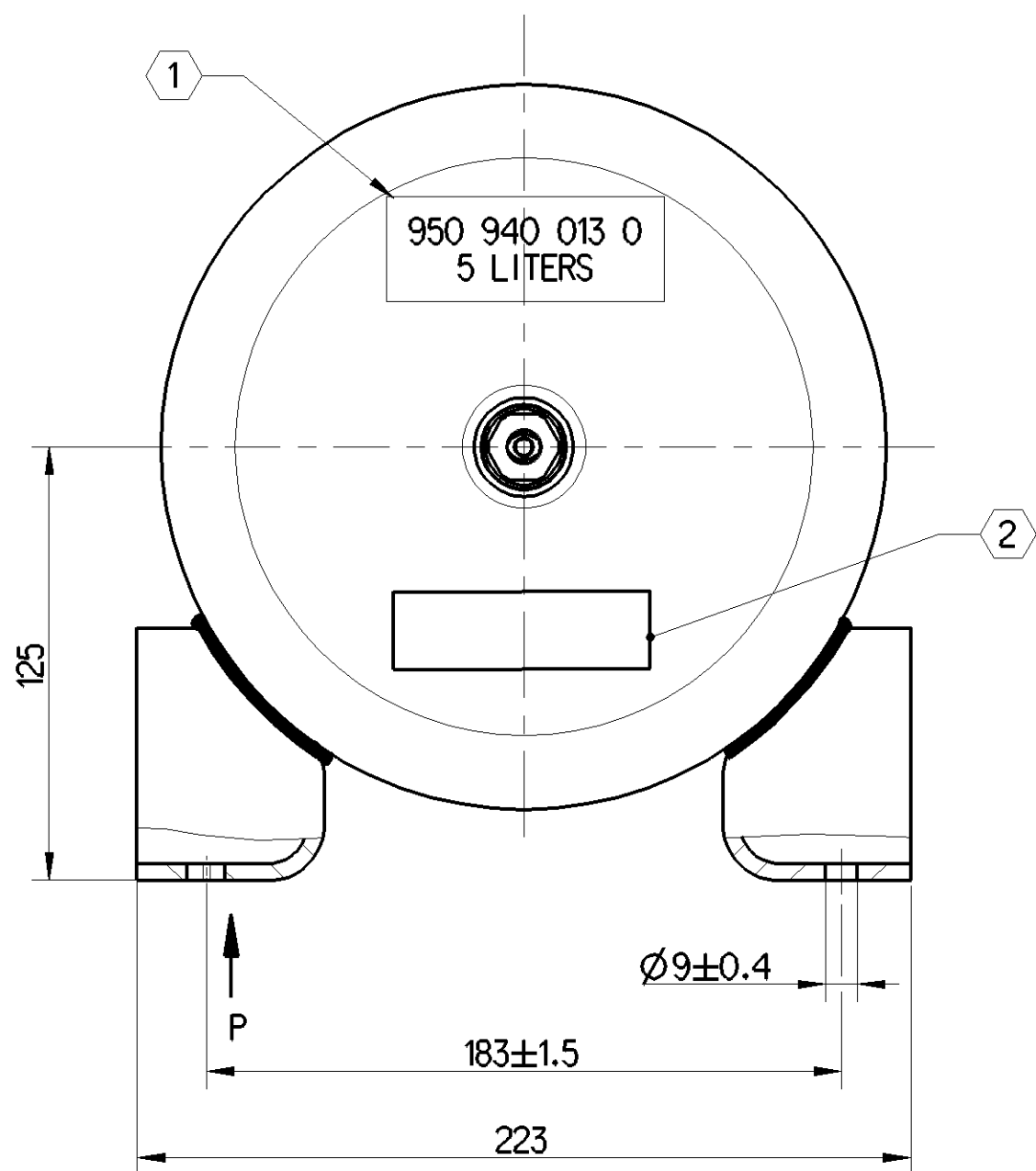
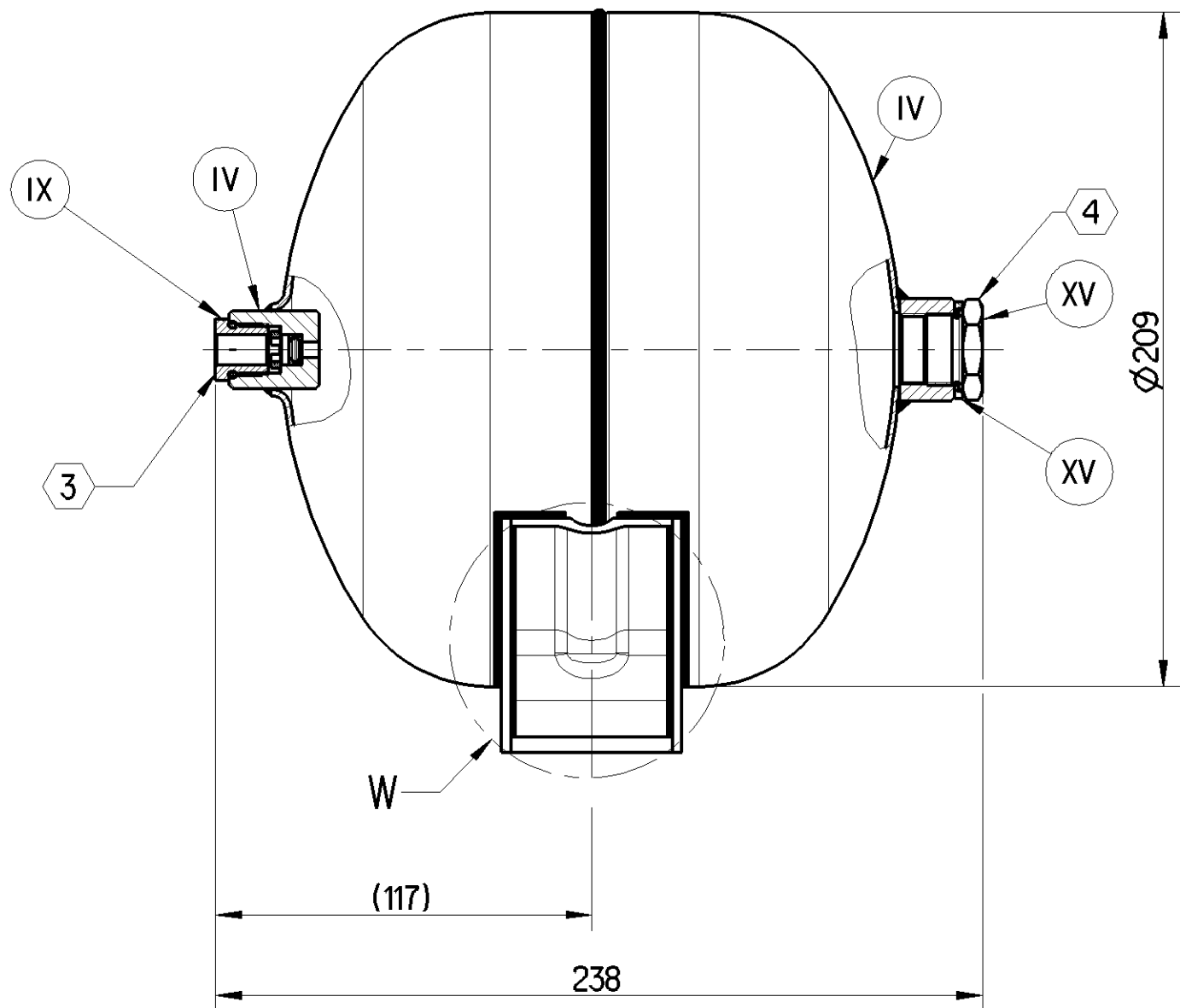


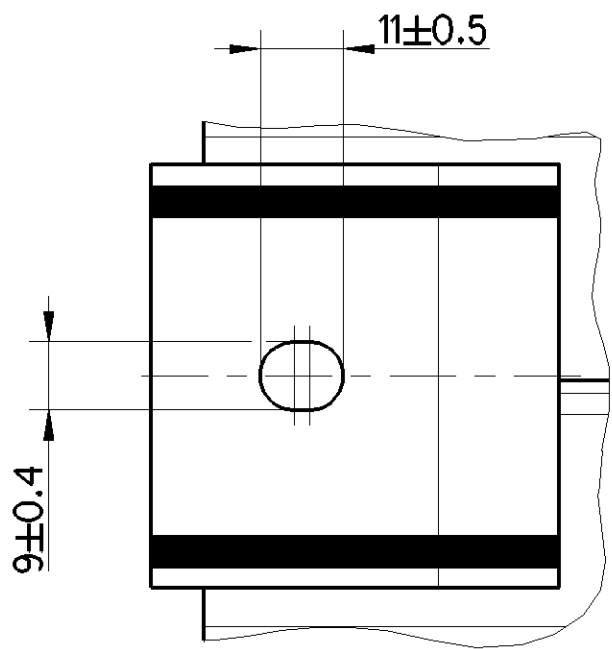
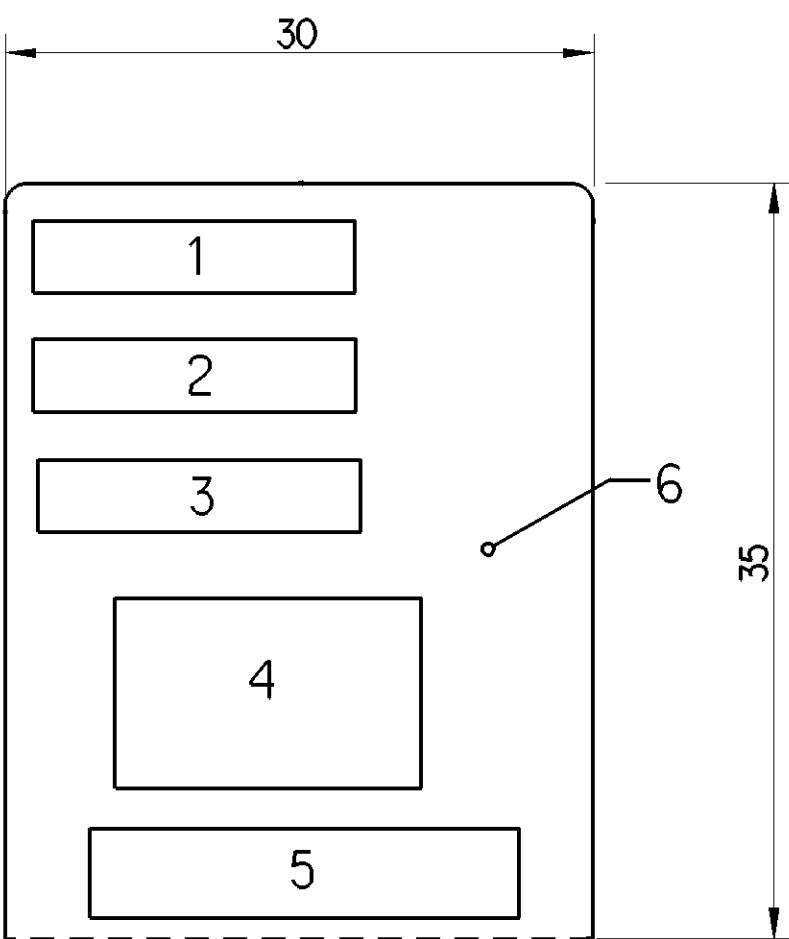
XVI	CAST IRON	PLATED
XV	STEEL	ZINC IRON PLATED
XIV	CAST IRON	NO TREATMENT
XIII	ZINC ALLOY	ANODISED
XII	PLASTIC	NO TREATMENT
XI	RUBBER	NO TREATMENT
X	STAINLESS STEEL	NO TREATMENT
IX	BRASS	NO TREATMENT
VIII	ZINC ALLOY	CHROMATED
VII	ALUMINIUM ALLOY	ANODISED
VI	ALUMINIUM ALLOY	CHROMATED
V	CAST IRON	PAINTED
IV	STEEL	POWDER COATED
III	STEEL	PAINTED
II	STEEL	PHOSPHATED
I	STEEL	ZINC PLATED
PART CODE	MATERIAL	SURFACE PROTECTION



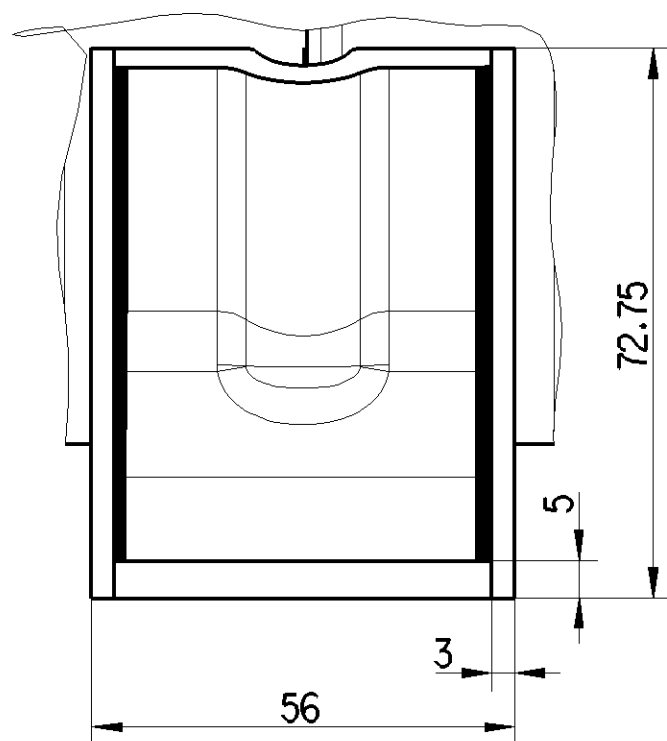
PORT	Ø A	Ø B
JED-388-0-M22x1.5	Ø 15 <sup>+0.043</sup>	(Max. Ø 14.95)
JED-388-0-M16x1.5	Ø 9.5 <sup>+0.036</sup>	(Max. Ø 9.45)

- Ⓐ ASSEMBLY LOAD NOT TO EXCEED 80 N WITH PREGREASE ON SEALS.
- Ⓑ SEALS ON THE PLUG ARE THE RESPONSIBILITY OF PLUG MANUFACTURER WITH REFERENCE TO DIMENSION "ØA" & "ØB".
- Ⓒ MAXIMUM INSERTION DEPTH OF PLUG TILL LOCKING.

#### QR CODE LABEL DETAILS



VIEW P



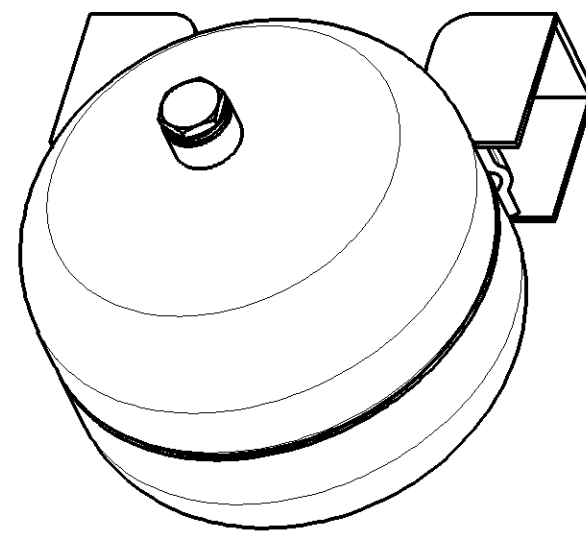
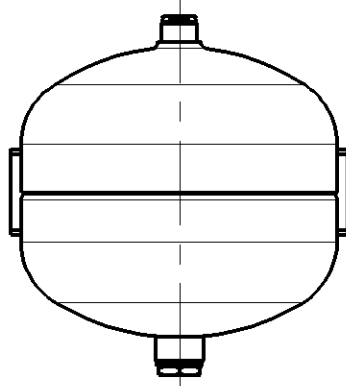
PURGE TANK MTG BRACKET

SLNO.	NOTES	
1	PRODUCT FUNCTION AND RELIABILITY	
1.1	WORKING MEDIUM	AIR
1.2	PRODUCT SPECIFICATION No.	9509400130____035
1.3	CAPACITY	5 LITERS
1.4	NORMAL WORKING PRESSURE	10 bar
1.5	MAXIMUM WORKING PRESSURE	13 bar
1.6	THERMAL RANGE OF APPLICATION	-40°C TO +80°C
1.7	CORROSION RESISTANCE	300 HOURS OF NSS IS APPLICABLE FOR PURGE TANK 240 HOURS OF NSS IS APPLICABLE FOR ADAPTORS
2	SERVICE LIFE TO FIRST OVERHAUL 3 YEARS/300000 km WHICHEVER IS EARLIER FOR AIR DRYER OR DDU FITTED VEHICLES. 1 YEAR /80000 km WHICHEVER IS EARLIER FOR NON AIR DRYER AND DDU FITTED VEHICLES	
3	OPEN PORT IS FITTED WITH CLOSURE PLUG FOR STORAGE AND TRANSIT PURPOSE	
4	INSTALLATION GUIDELINE	AS PER PERMISSIBLE INSTALLATION POSITION
5	SHEET THICKNESS - PURGE TANK	2 mm
6	PERMISSIBLE LEAKAGE	8 cc/min

NR.	FIELD	SAMPLE DATA
1	PART IDENTIFICATION CODE	XXX
2	CUSTOMER PART No.	XXXXXXXXXXXXX
3	VENDOR CODE	XXXXXX
4	QR CODE	REFER TABLE 1
5	CONTENTS OF QR CODE	REFER TABLE 1
6	REMAINING AREA	-

SL.No.	FIELD	SAMPLE DATA
1	PART IDENTIFICATION CODE	XXX
2	CUSTOMER PART No.	XXXXXXXXXXXXX
3	VENDOR CODE	XXXXXXXXXXXXXXXXX
4	MANUFACTURING DATE	XXXXXX
5	MANUFACTURING SHIFT	XX
6	SERIAL No.	XX

#### PERMISSIBLE INSTALLATION POSITION



THREAD TYPE	INLET AND DELIVERY CONNECTION M16x1.5, HEX. 19 FITTINGS TO SUIT MATING SYSTEM EQUIVALENT TO VOSS 230	METRIC PORT M22x1.5, HEX 27
PERMISSIBLE TORQUE	10±1 Nm	70.5±3.5 Nm

- ① WABCO PART NO. CAPACITY DETAILS ARE SHOWN HERE.
- ② QUICK RESPONSE CODE LABEL TO BE PASTED HERE

General Specification: JED-334-1, Size ISO 14405 LP						Copyright WABCO®		<b>WABCO</b>  RESERVOIR WITH MOUNTING BRACKET	
Further Technical Data: 950 940 013 0						Date	Signature		
Doc. Code: 035		Sheet: 1		To 2		Drawn			
General Tolerances JED-261						2021-10-06	Christosolomon D		
Range of Nominal Dimensions ( ± mm)						Checked			
						2021-10-07		Sahul T	
						Expert			
						Sahul Homed			
						Material No.			
						Date of first issue			
						Doc. Code		Language	
						Sheet			
						950 940 013 0			
						Revision			
						Techn. Resp.			
						Replacement for			