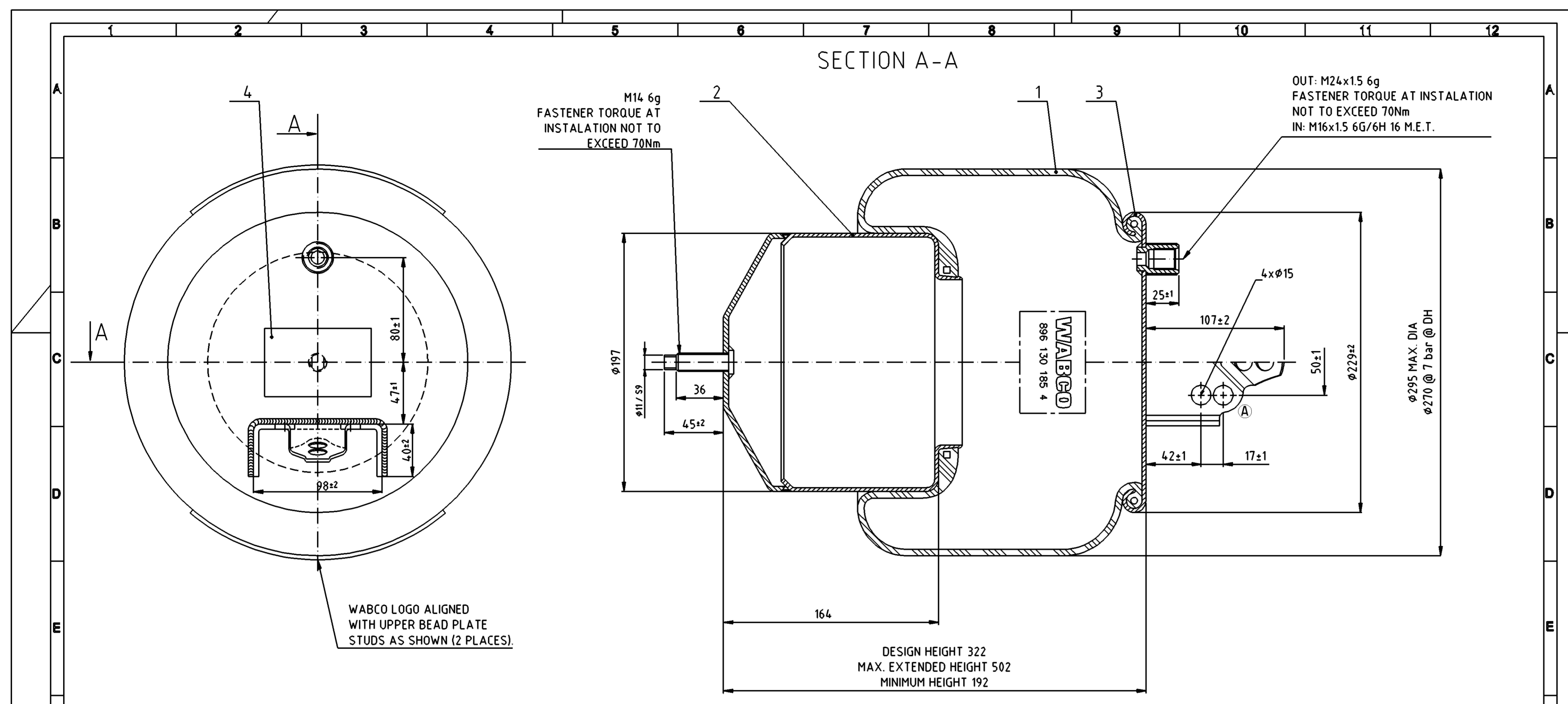


SECTION A-A



M14 6g
FASTENER TORQUE AT
INSTALLATION NOT TO
EXCEED 70Nm

OUT: M24x1.5 6g
FASTENER TORQUE AT INSTALLATION
NOT TO EXCEED 70Nm
IN: M16x1.5 6G/6H 16 M.E.T.

WABCO LOGO ALIGNED
WITH UPPER BEAD PLATE
STUDS AS SHOWN (2 PLACES).

DESIGN HEIGHT 322
MAX. EXTENDED HEIGHT 502
MINIMUM HEIGHT 192

SURFACE TREATMENT
UPPER BEAD PLATE: Zinc coating
PISTON: Powder coating

NOTES:

1. MINIMUM PRESSURE AT MAXIMUM EXTENSION IS NOT TO BE LESS THAN 0.5bar.
2. ASSEMBLY PRESSURE TESTED PER GMS XIII-301.
3. ASSEMBLY DESIGNED TO OPERATE BETWEEN -40° AND +70°.
4. CUSTOMER TO PROVIDE MECHANICAL DEVICE TO LIMIT MAXIMUM EXTENSION TO MAX. EXTENDED HEIGHT.
5. WARNING: DO NOT INFLATE UNLESS FULLY SECURED IN THE SUSPENSION OR OTHER ADEQUATE STRUCTURE. DO NOT INFLATE TO MORE THEN 8bar AT ANY HEIGHT. OTHERWISE BODILY INJURY COULD RESULT

Poz. No.	Object and dimension	Page	Material	Drawing no. - standard	Note
4	1 WARNING & IDENT. LABEL				
3	1 UPPER BEAD PLATE		DIN UST13	ASA-92-8-740	
2	1 PISTON		DIN US113	ASD-20-7-755	
1	1 FLEXIBLE MEMBER		NR-BR	896 130 185 4	

Techn. Lieferbedingungen / Engineering and delivery specs Normen / Standards Dimensionen without tolerances according to ISO 2768 c

Kunden-Tel-Nr. / Customer-reqt-Nr.:

01 New drawing format. Bracket design changed.

Änderung	Datum	Ursache	Abteilung / Department
1	01.04.2009	R. Stral	R&D AS
2	02.04.2009	J. Rebernik	R&D AS
3	03.05.2009	M. Huber	R&D AS

Scale: 1:2

Benennung/Title: WABCO 951 811 005 0 (eq. to 1R11-805)

Copyright © 2009 WABCO. All rights reserved.

Material No. / Item No.: 896 130 185 4

Weight: 6,8 kg

NO 138 Methode 1 per code method

Zählung-Nr./Drawing-No.: 566-22-2-844

Index: 01

General Specification: JED-334-1, ISO 14405 LP

Further Technical Data: 9518117730

Doc. Code: 035 Sheet: 01 To: 03

Copyright WABCO®

Date: 2019-11-14

Drawn: Mojcher

Checked: Saravanan

Expert: Saravanan

Material No.: 951 811 005 0

Date of first issue: 2009-05-27

Doc. Code: 005 ML 1/1

Revision: 1x A

Techn. Resp.: 6960

Replacement for: 501908

Mass: 6.800 kg

Scale: -

Size: A1 CREO

ECN-No.: 501908

Revision: 1x A

Techn. Resp.: 6960

Replacement for: 501908

1) Tolerance Class Applied Crossmarked

100mm

Non e permesso copiare o riprodurre questo documento, né utilizzare il contenuto a fini commerciali, senza permesso scritto dalla WABCO. È vietata espressamente la ristampa o l'uso non autorizzato di questo documento. Toute réimpression ou utilisation non autorisée sans la permission écrite de la WABCO est formellement interdite. Toute utilisation non autorisée sera considérée comme acte de contrefaçon et sera poursuivie en justice.