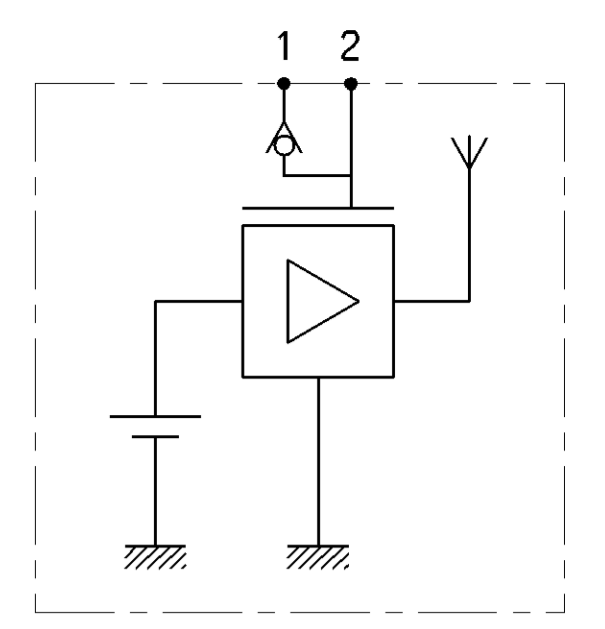
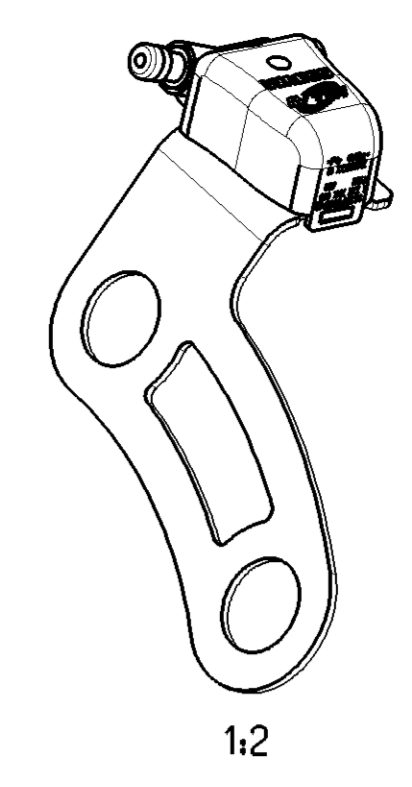
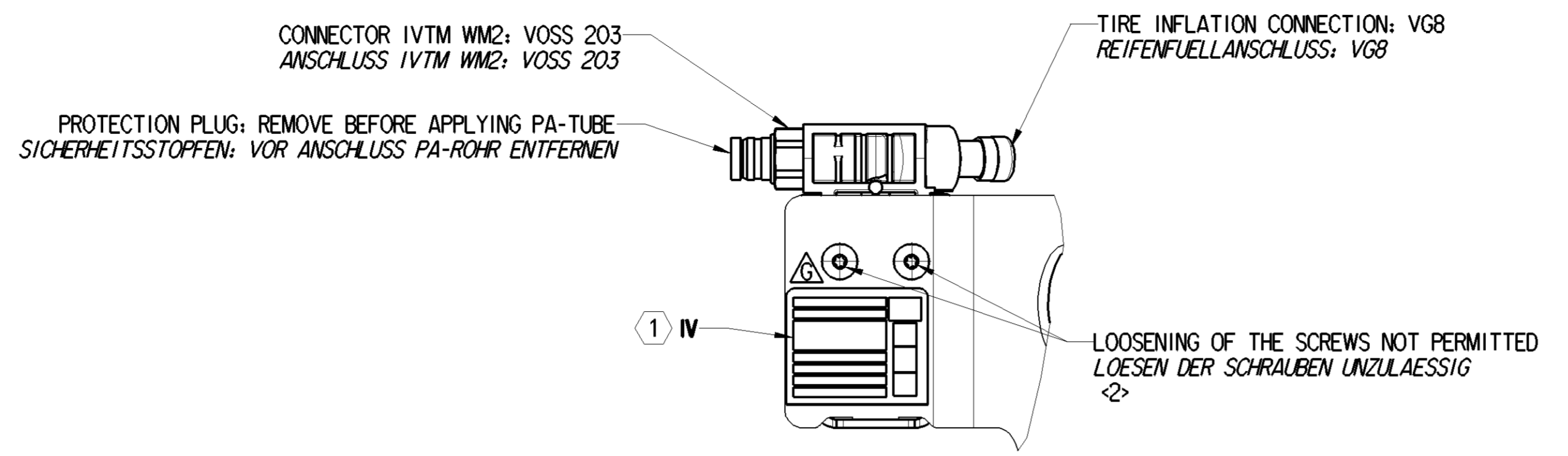


SAFETY CHARACTERISTICS	0
SIGNIFICANT CHARACTERISTICS	2

! DANGER ENSURE EXTENSION LOCKING BEFORE INFLATING; ANY UNINTENDED DETACHMENT HAS TO BE PREVENTED
VOR DRÜCKBEAUFSCHLAGUNG GEWAHRLEISTEN, DASS DIE SCHLAUCHVERLÄNGERUNG EINGERASTET IST UND SICH NICHT SELBSTTÄTIG LOESEN KANN

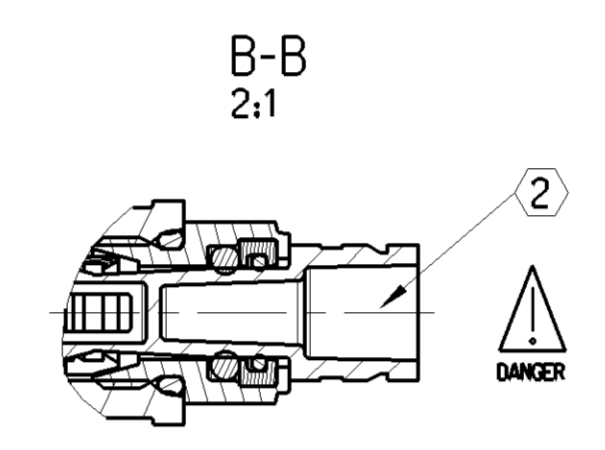
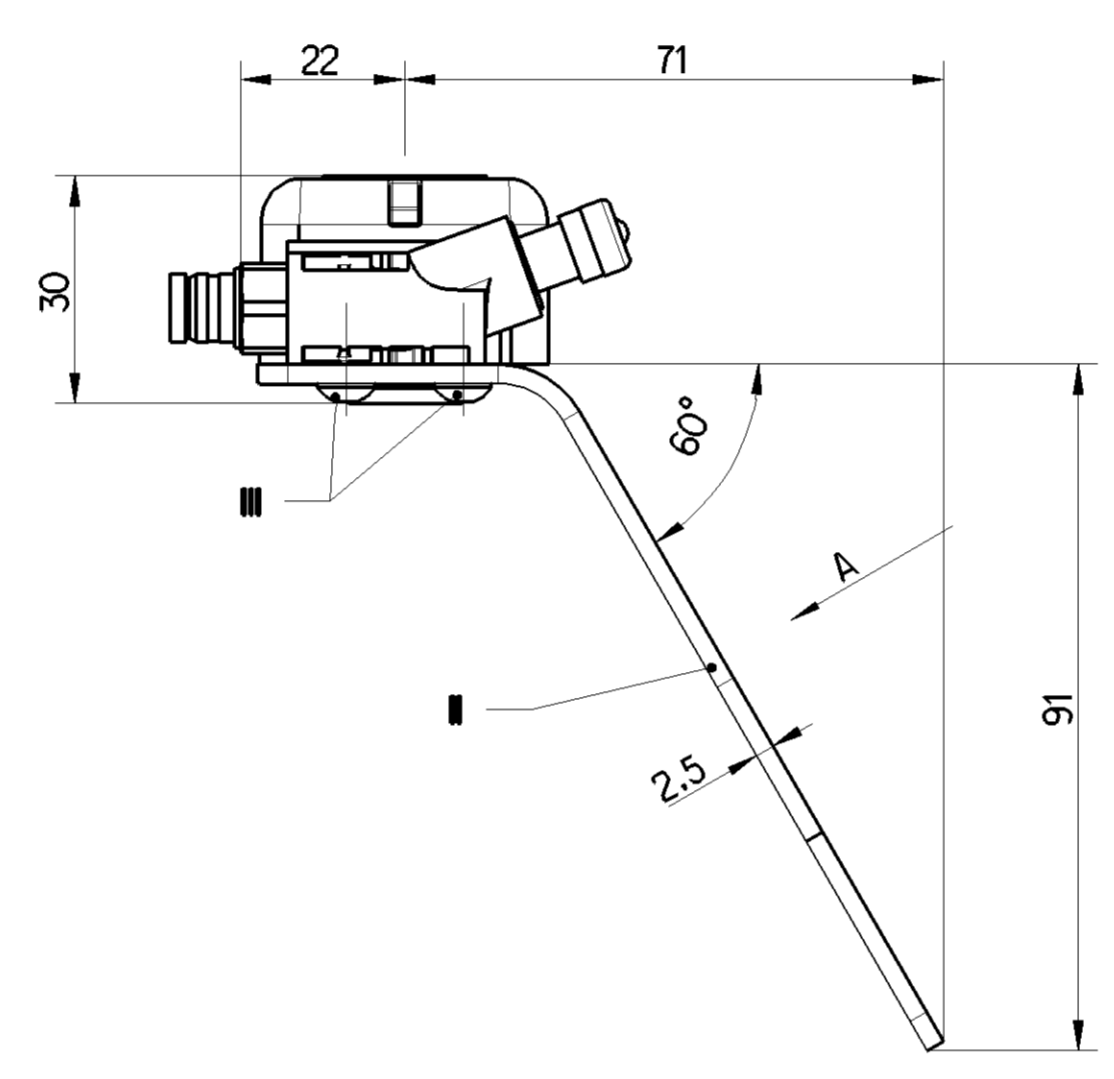
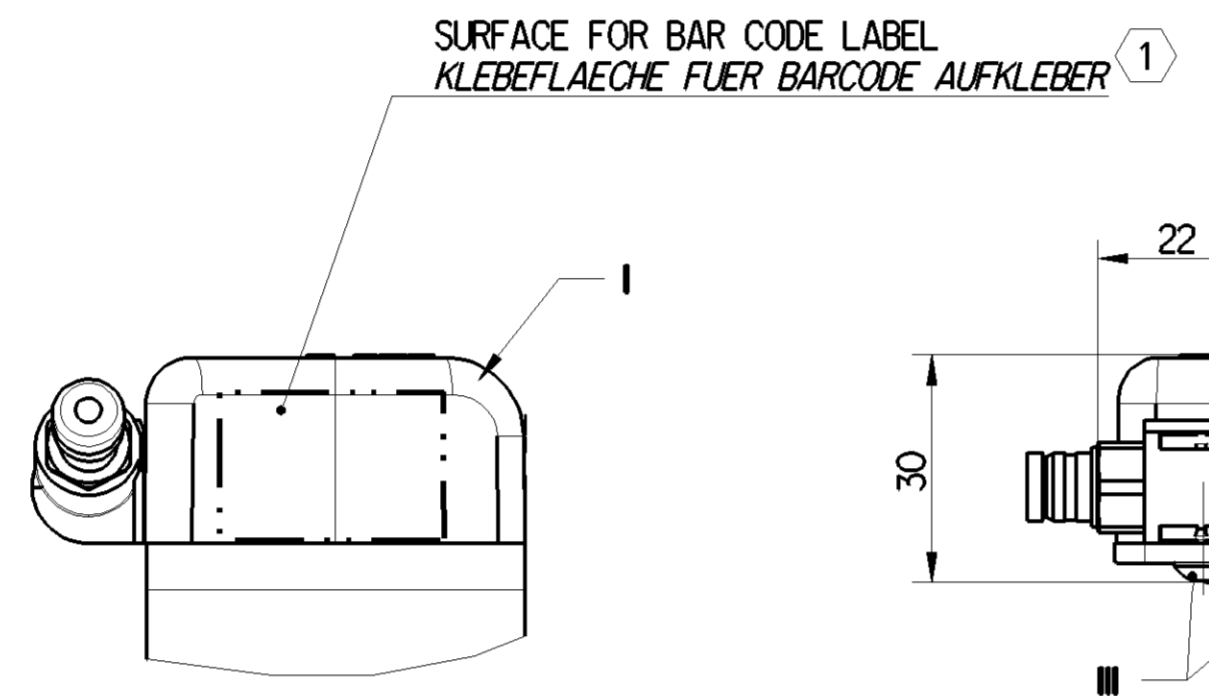
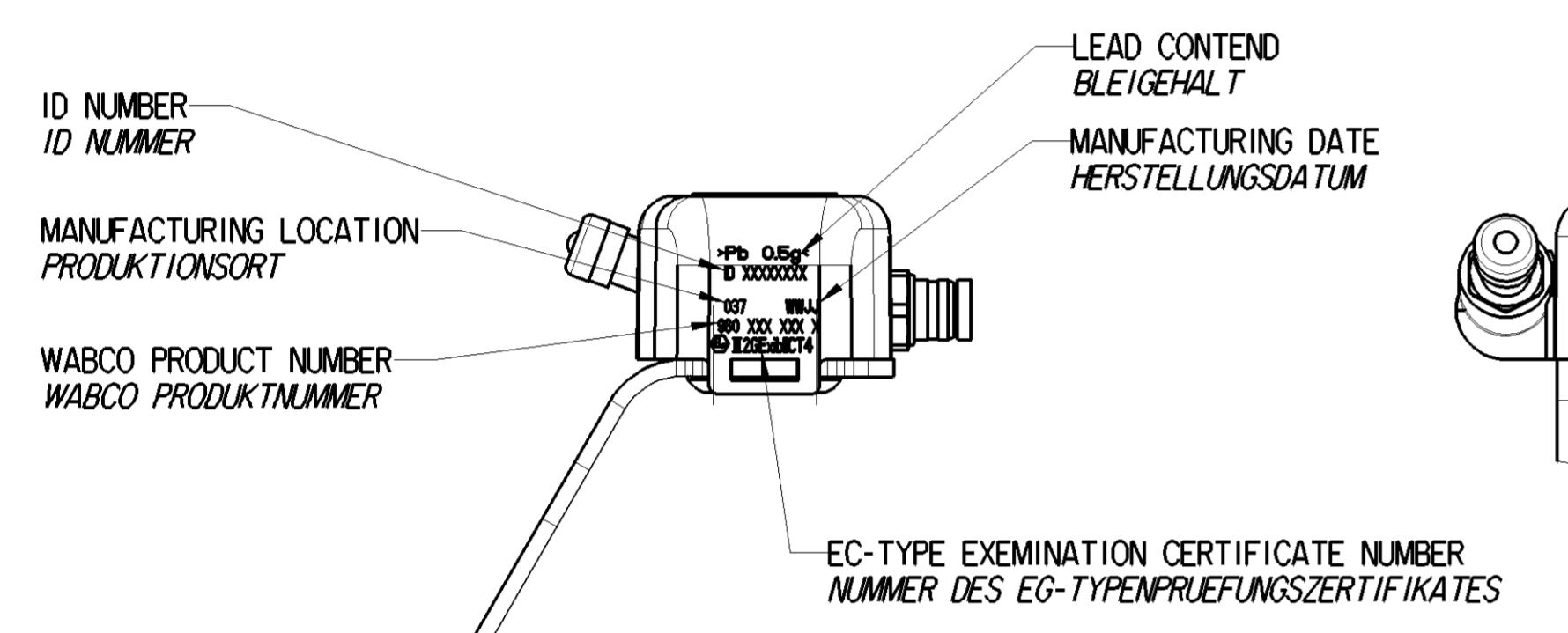


PRECISION GENAUIGKEIT	Temperature	0...+70°C	-20...0°C	-40...-20°C
	max FSO [%]	1.33	+70...+85°C	+85...+125°C
			2	3.2

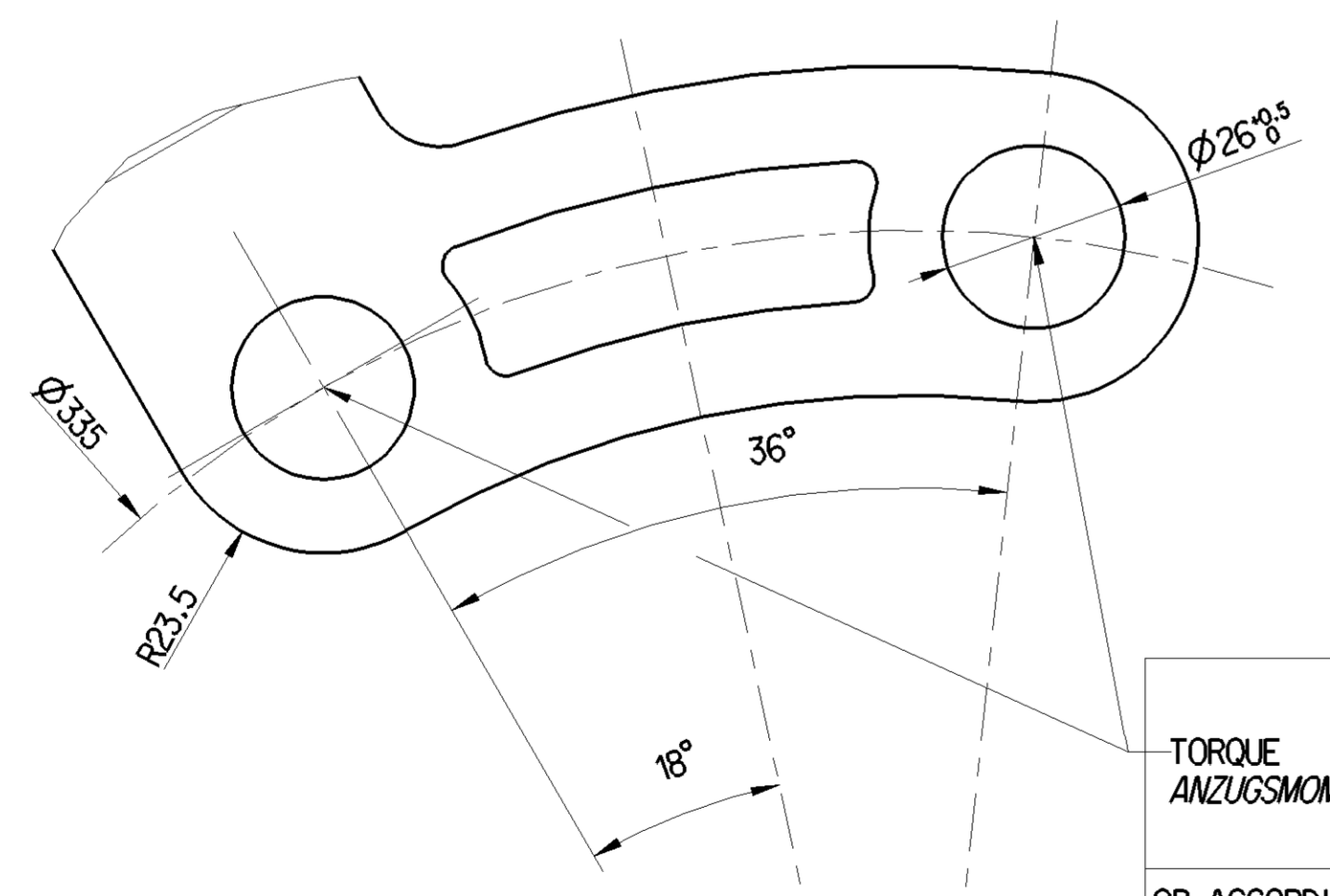
RF POWER SENDELEISTUNG	-12 dBm
TRANSMITTER FREQUENCY SENDEFREQUENZ	min 433.82MHz max 434.02MHz
THERMAL RANGE THERM. ANWENDUNGSBEREICH	-40 °C...+90 °C AND 120 °C - 24h
MEDIUM: MEDIUM:	AIR LUFT
EMC NUMBER: EMC NUMBER:	E1 10R-058164
MEASURING RANGE: DRUCK MESS BEREICH:	RELATIVE TO ATMOSPHERIC PRESSURE= 100kPa RELATIV ZUM ATMOSPHAERENDRUCK= 100kPa
DEGREE OF PROTECTION WITH EXTENSION SCHUTZART MIT VERLÄNGERUNG	IP6K6K IP6K7 IP6K9K
FOR FURTHER TECHNICAL DATA SEE PRODUCT SPECIFICATION WEITERE TECHNISCHE DATEN SIEHE PRODUKT SPEZIFIKATION	960 731 990 0

- 1 LABEL, CONTENTS SEE DOCUMENT "LABELING INFORMATION" 960 731 051 0 (DOC. CODE 922)
- 2 PUSH-TO-CONNECT WITH PA-TUBE 6 X 1,5; PA12PHLY ONLY
PUSH-TO-CONNECT NUR MIT PA-TUBE 6 X 1,5; PA12PHLY

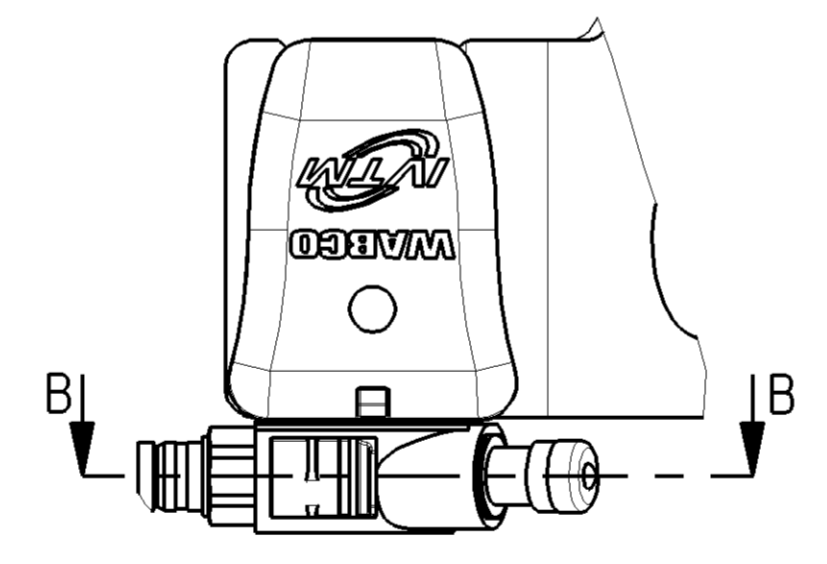
CONTAINS LITHIUM BATTERY ENTHÄLT LITHIUM BATTERIE	Li CONTENT: 0,15g LITHIUM ANTEIL 0,15g
MATERIAL WERKSTOFF	SURFACE PROTECTION OBERFLÄCHENSCHUTZ
JED-352-9	-
Fe JED-589-1	Zn/C JED-739-3 COLOUR SHADE: SILVER FARBTON : SILBER
STEEL STAHL	ZINC COATING ACCORDING TO JED-256-4 VERZINKUNG NACH JED-256-4
SELF-ADHESIVE FOIL/ SELBSTKLEBENDE FOLIE/ POLYESTER	POLYESTER



VIEW LOOKING IN DIRECTION OF ARROW : A
ANSICHT IN RICHTUNG : A



TORQUE ANZUGSMOMENT	FOR STEEL WHEELS: FÜR STAHLRAEDER:	450-550 Nm
	FOR ALUMINIUM WHEELS: FÜR ALUMINIUMRAEDER:	550-650 Nm
OR ACCORDING TO THE MANUFACTURER'S SPECIFICATIONS BZW. GEMAESS HERSTELLERANGABE		



General Specification: ISO 9015, JED-334-1, Size ISO 14405 LP

Copyright WABCO®

Doc. Code: 960 731 051 0

Sheet: 1 of 1

Date: 2023-01-30

Drawn: Markuszewski

Checked: Cornelius

Material No.: 960 731 051 0

Date of first issue: 2007-11-19

Doc. Code: 005 DE 1/1

Revision: 2x 6

Techn. Resp.: 6033

Replacement for:

1) Tolerance Class Applied Crossmarked

Non è permesso copiare o riprodurre questo documento, né utilizzare il contenuto o i materiali contenuti in esso, senza permesso scritto dalla WABCO. È vietata espressamente la ristampa o l'uso non autorizzato di questo documento. Toute réimpression ou utilisation non autorisée sans la permission écrite de la WABCO est formellement interdite. Toute réimpression ou utilisation non autorisée sans la permission écrite de la WABCO est formellement interdite.