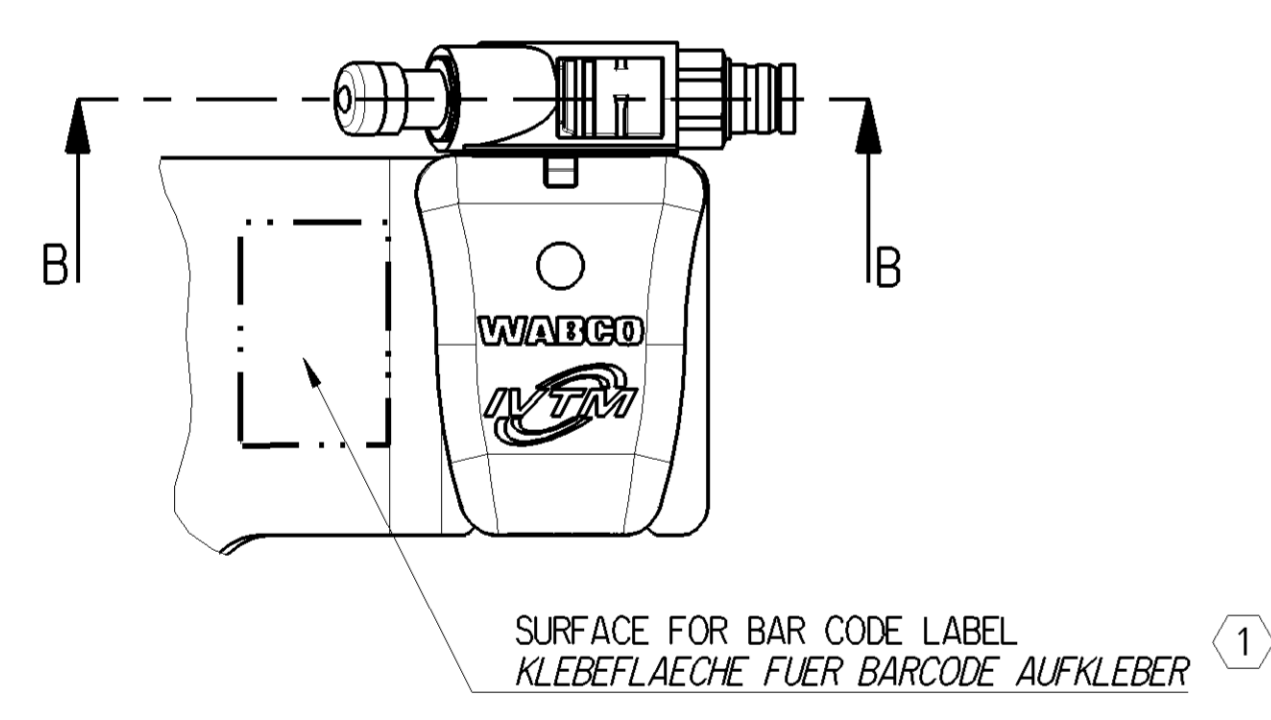
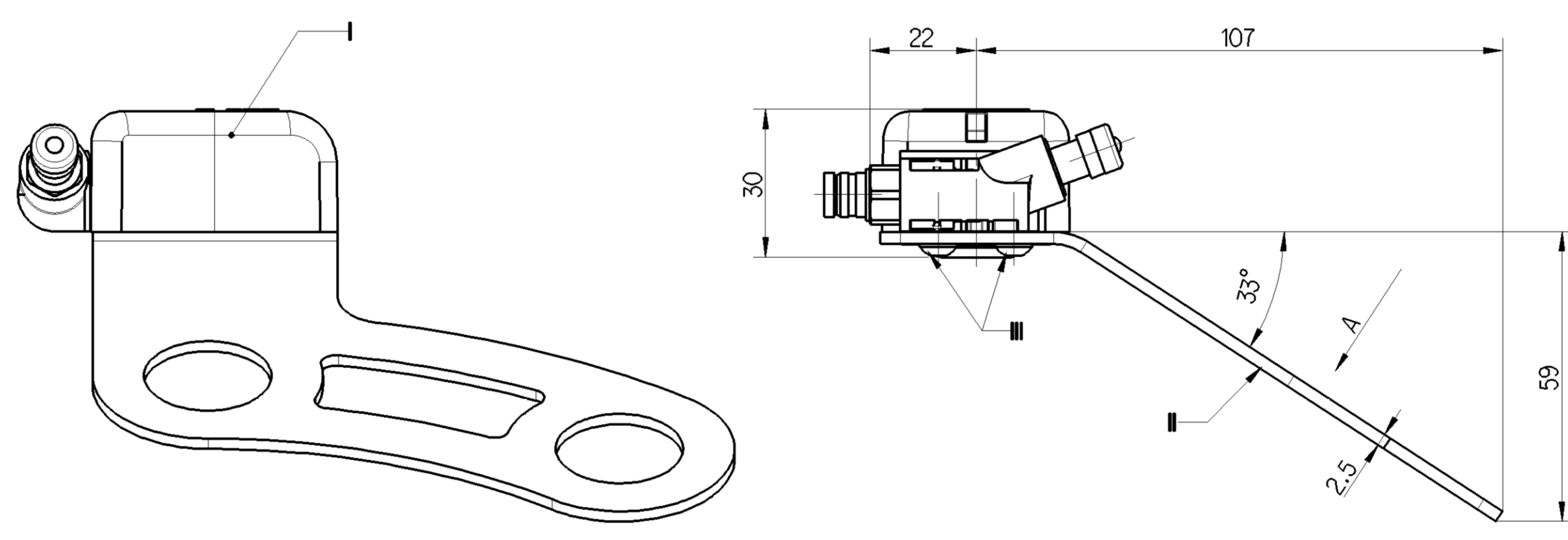
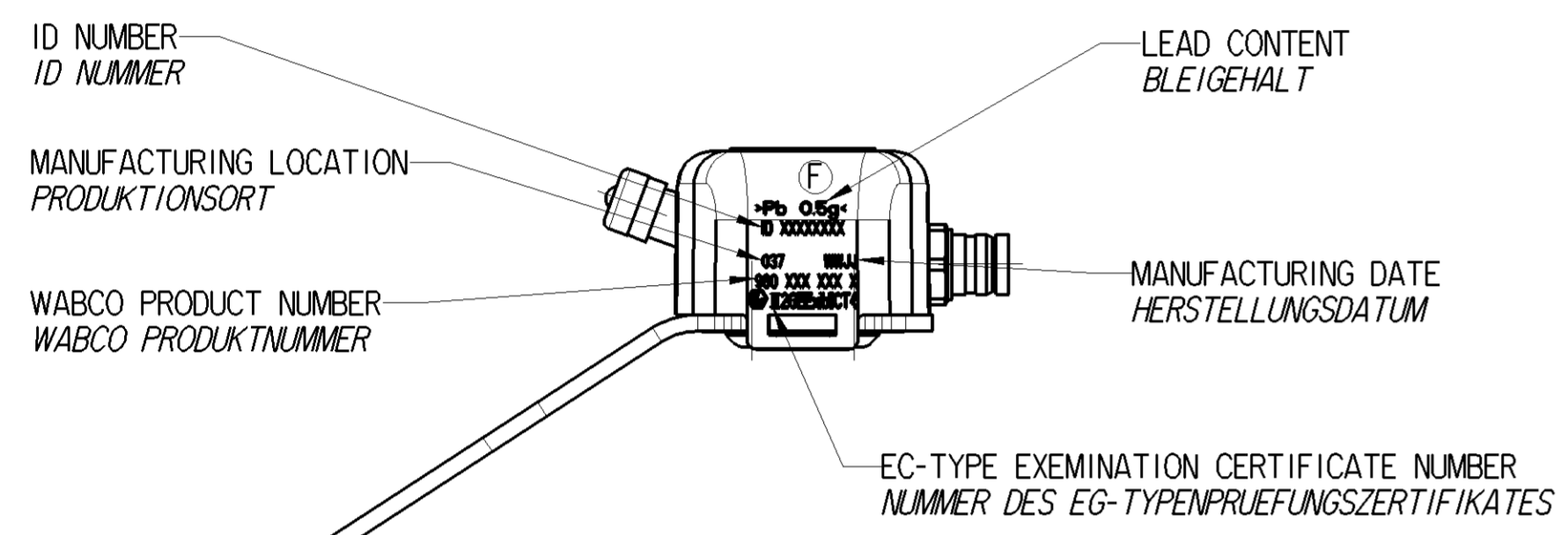
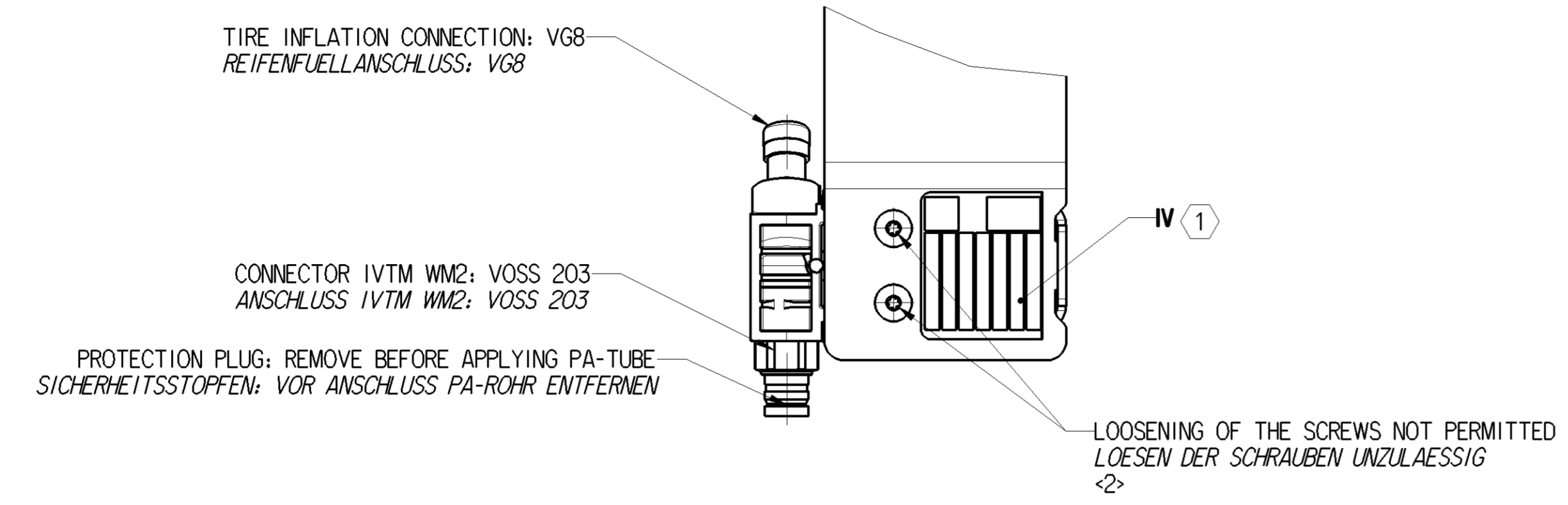
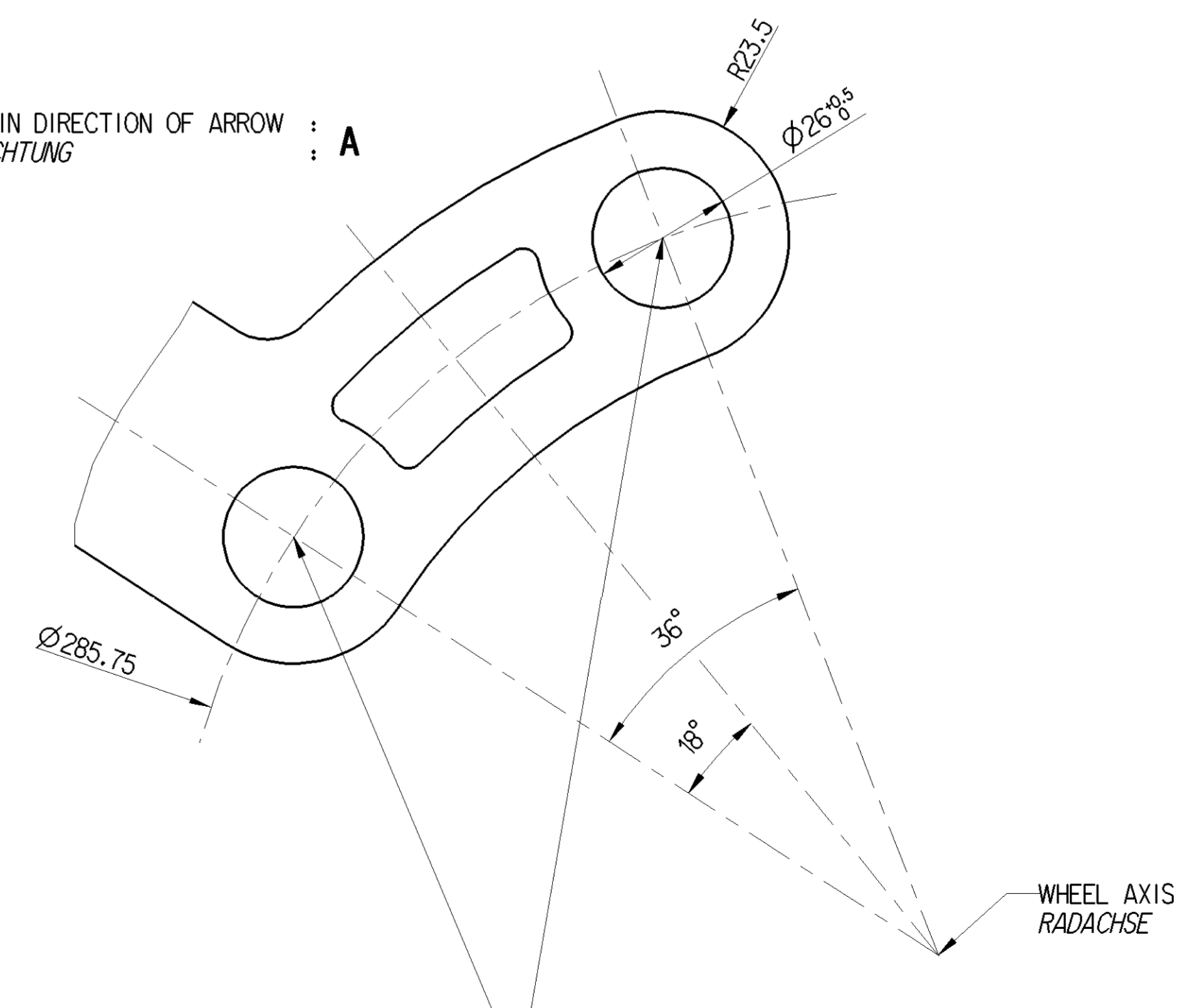


1	2	3	4	5	6	7	8	9	10	11	12	13	14	15	16
←1	SAFETY CHARACTERISTICS		0												
←2	SIGNIFICANT CHARACTERISTICS		2												

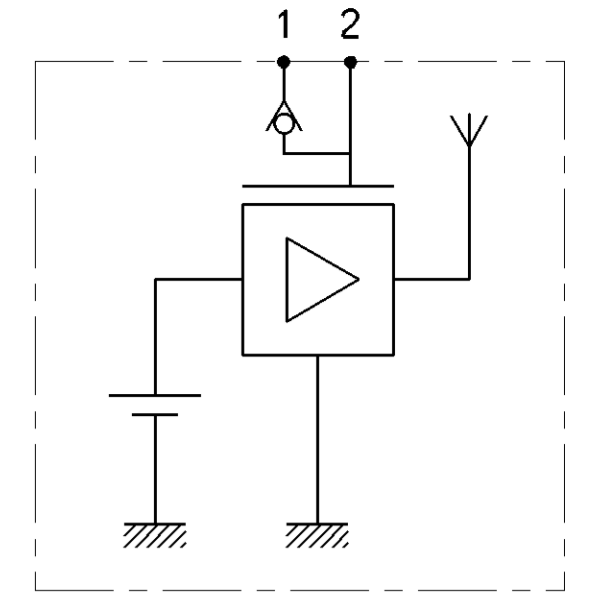
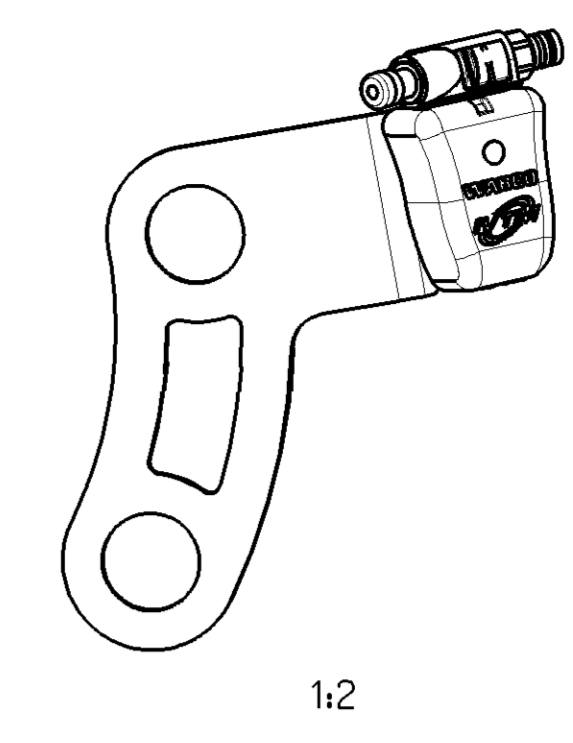
⚠ DANGER
 ENSURE EXTENSION LOCKING BEFORE INFLATING; ANY UNINTENDED DETACHMENT HAS TO BE PREVENTED
 VOR DRUCKBEAUFSCHLAGUNG GEWAHRLEISTEN, DASS DIE SCHLAUCHVERLAENGERUNG EINGERASTET IST UND SICH NICHT SELBSTTAETIG LOESEN KANN



VIEW LOOKING IN DIRECTION OF ARROW : A
 ANSICHT IN RICHTUNG : A



TORQUE ANZUGSMOMENT	FOR STEEL WHEELS: FUER STAHLRAEDER:	450-550 Nm
	FOR ALUMINIUM WHEELS: FUER ALUMINIUMRAEDER:	550-650 Nm
OR ACCORDING TO THE MANUFACTURER'S SPECIFICATIONS BZW. GEMAESS HERSTELLERANGABE		



PRECISION GENAUIGKEIT	Temperature	0...+70°C	-20...0°C	-40...-20°C
	max FSO [%]	1.33	2	3.2
RF POWER SENDELEISTUNG	-12 dBm			
TRANSMITTER FREQUENCY SENDEFREQUENZ	min 433.82MHz max 434.02MHz			
THERMAL RANGE THERM. ANWENDUNGSBEREICH	-40 °C...+90 °C AND 120 °C - 24h			
MEDIUM: MEDIUM:	AIR LUFT			
EMC NUMBER: EMC NUMBER:	E1 10R-058164			
MEASURING RANGE: DRUCK MESS BEREICH:	200 < P < 1400 kPa RELATIVE TO ATMOSPHERIC PRESSURE= 100kPa RELATIV ZUM ATMOSPHAERENDRUCK= 100kPa			
DEGREE OF PROTECTION WITH EXTENSION SCHUTZART MIT VERLAENGERUNG	IP6K6K IP6K7 IP6K9K			
FOR FURTHER TECHNICAL DATA SEE PRODUCT SPECIFICATION WEITERE TECHNISCHE DATEN SIEHE PRODUKT SPEZIFIKATION	960 731 990 0			
1 LABEL, CONTENTS SEE DOCUMENT "LABELING INFORMATION"	960 731 075 0 (DOC. CODE 922)			
2 PUSH-TO-CONNECT WITH PA-TUBE 6 X 1,5; PA12PHLY ONLY PUSH-TO-CONNECT NUR MIT PA-TUBE 6 X 1,5; PA12PHLY				
CONTAINS LITHIUM BATTERY ENTHAELT LITHIUM BATTERIE	Li CONTENT: 0,15g LITHIUM ANTEIL 0,15g			
MATERIAL WERKSTOFF	JED-352-9		SURFACE PROTECTION OBERFLAECHENSCHUTZ	
II Fe JED-589-1			Zn/C JED-739-3 COLOUR SHADE: SILVER FARBTON : SILBER	
III STEEL STAHL			ZINC COATING ACCORDING TO JED-256-4 VERZINKUNG NACH JED-256-4	
IV SELF-ADHESIVE FOIL/ SELBSTKLEBENDE FOLIE/ POLYESTER				

General Specifications		JED-334- ISO 14405 LP		Copyright WABCO®	
Further Technical Data:		Date		Signature	
Doc. Code:	Sheet:	2017-02-14		Markuszewski	
General Tolerances JED-261		2017-02-22		Cornelius	
Range of Nominal Dimensions (± mm)		Expert		CORNELIUS	
Class	1)	≤ 50	> 50 < 180	≤ 180	> 180 < 400
Fine		0,5	1,0	1,5	2,0
Medium	X	1,0	2,0	3,0	4,0
Coarse		2,0	3,5	5,0	6,5
Tapped Holes acc. JED-152		Mass		Scale	
1) Tolerance Class Applied Crossmarked		0,3 kg		1:1	
		Size		CAD System	
		A 1		CREO	
		Material No.		Date of first issue: 2008-03-10	
		960 731 075 0		005 DE 1/1	
		EON-No.		Revision	
		169421		7x F 6033	
		Techn. Resp.		Replacement for	

Non e permesso copiare o riprodurre questo documento, ne utilizzare a contenuto o renderlo contenuto in un altro documento, senza permesso scritto dalla WABCO. Tutti i diritti sono riservati. Toute réimpression ou utilisation non autorisée sans la permission écrite de la WABCO est formellement interdite. Toute réimpression ou utilisation non autorisée sans la permission écrite de la WABCO est formellement interdite. Toute réimpression ou utilisation non autorisée sans la permission écrite de la WABCO est formellement interdite.