

FOR INFORMATION  
ZUR INFORMATION

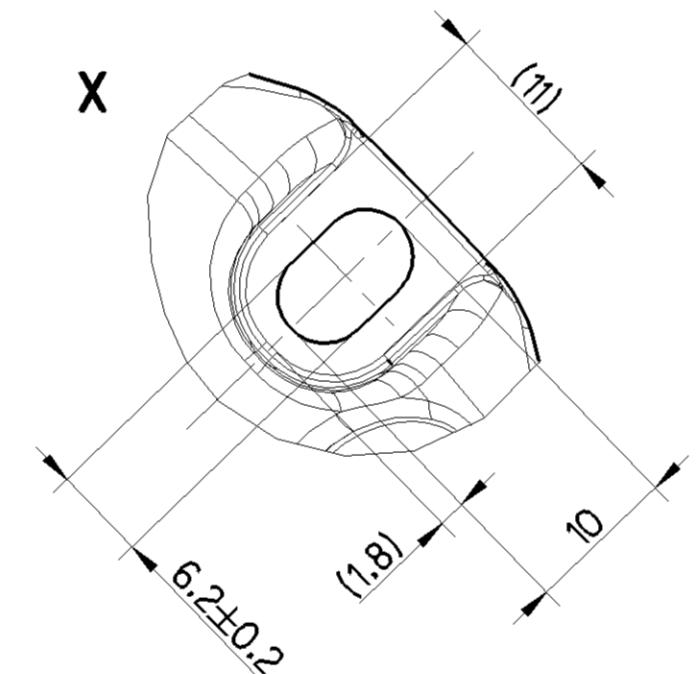
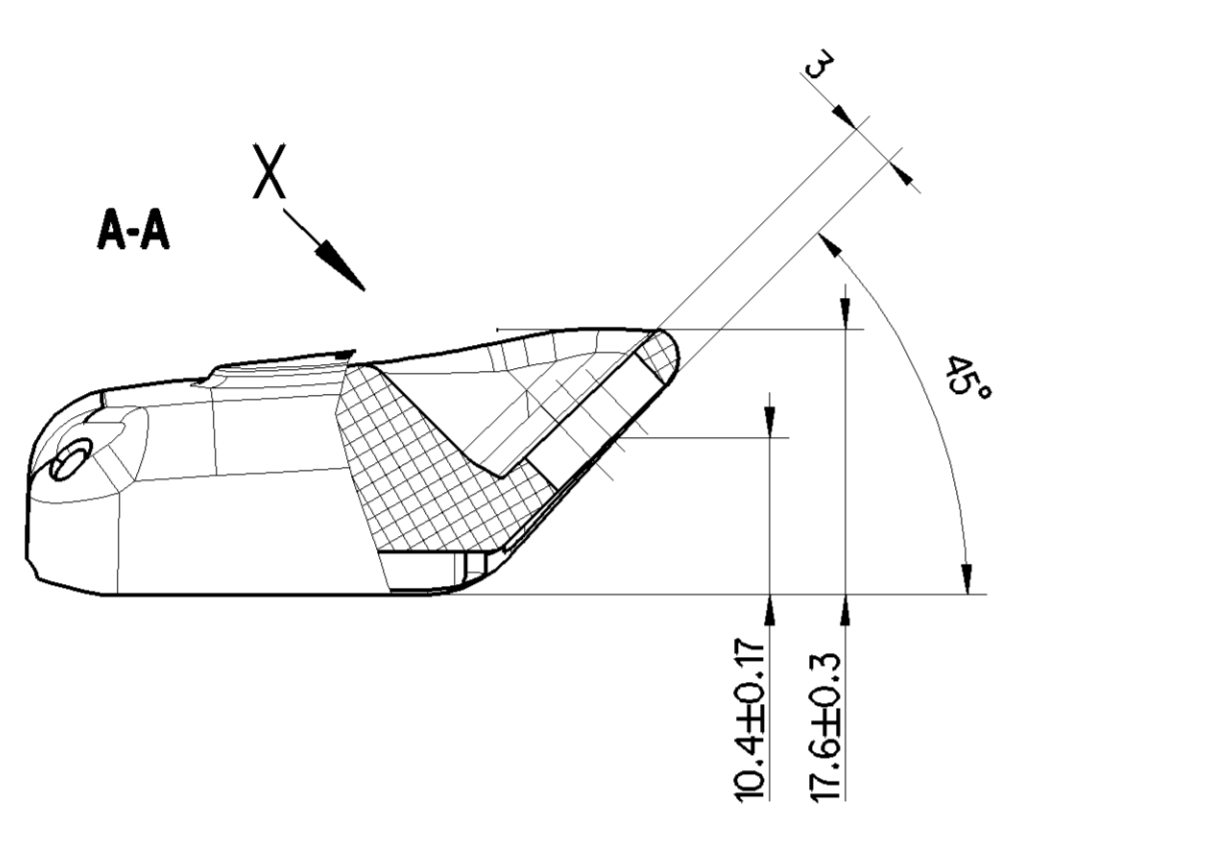
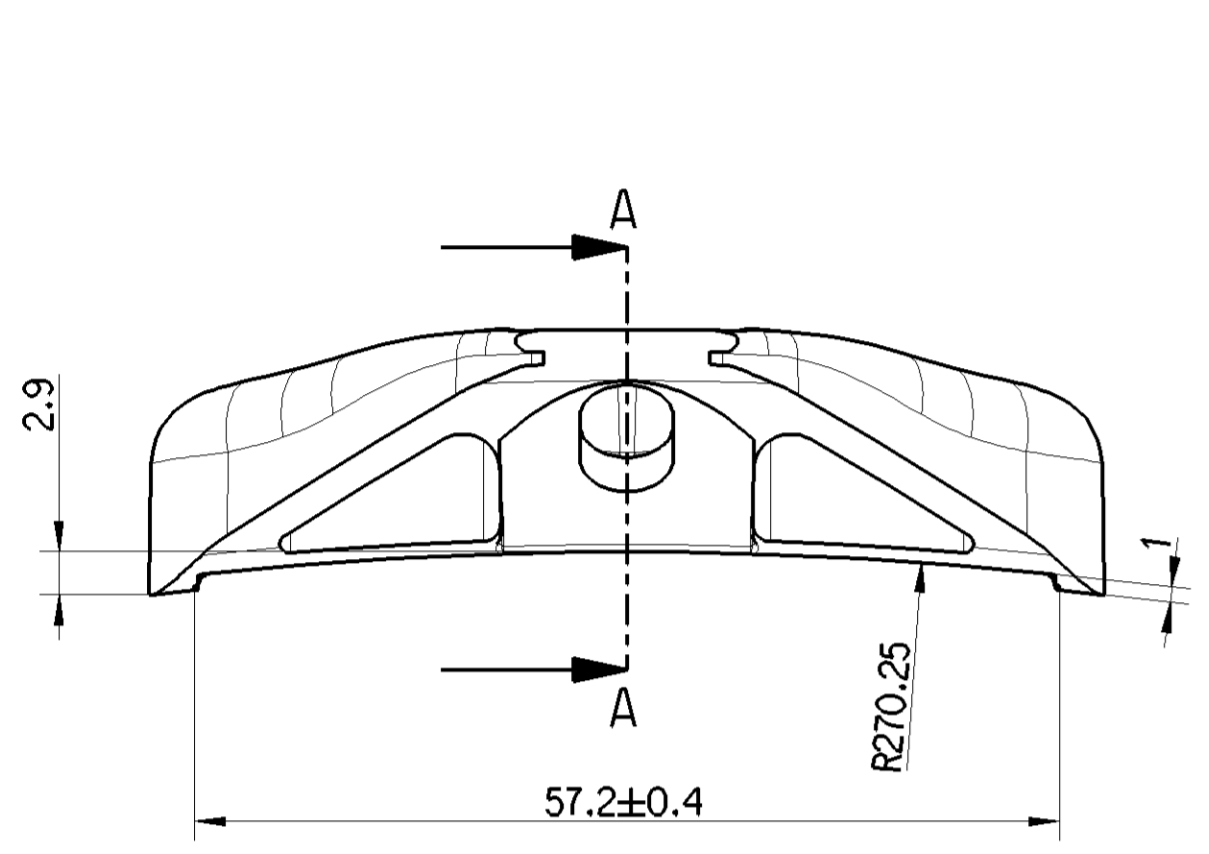
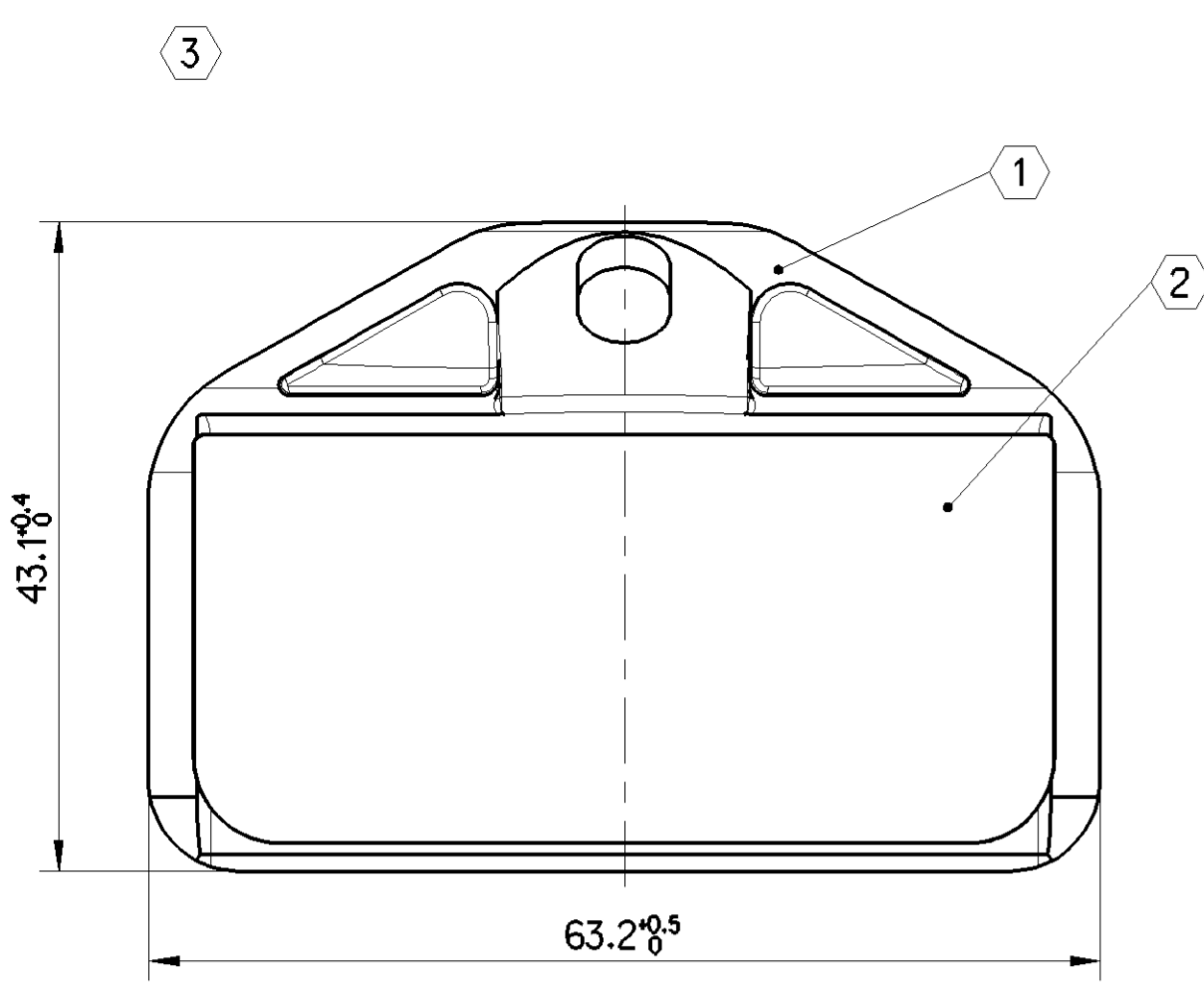
TO BE OBSERVED  
ZU BEACHTEN

EXCESS OF GROUTING IS ALLOWED INSIDE OUTER CONTOUR  
UEBERSTAND DER VERGUSSMASSE INNERHALB DER AUSSENKONTUR ERLAUBT

USAGE OF SEALING AGENT AND BALANCING SAND IS PROHIBITED  
VERWENDUNG VON DICHTMASSE UND AUSWUCHTSAND IST UNZULAESSIG

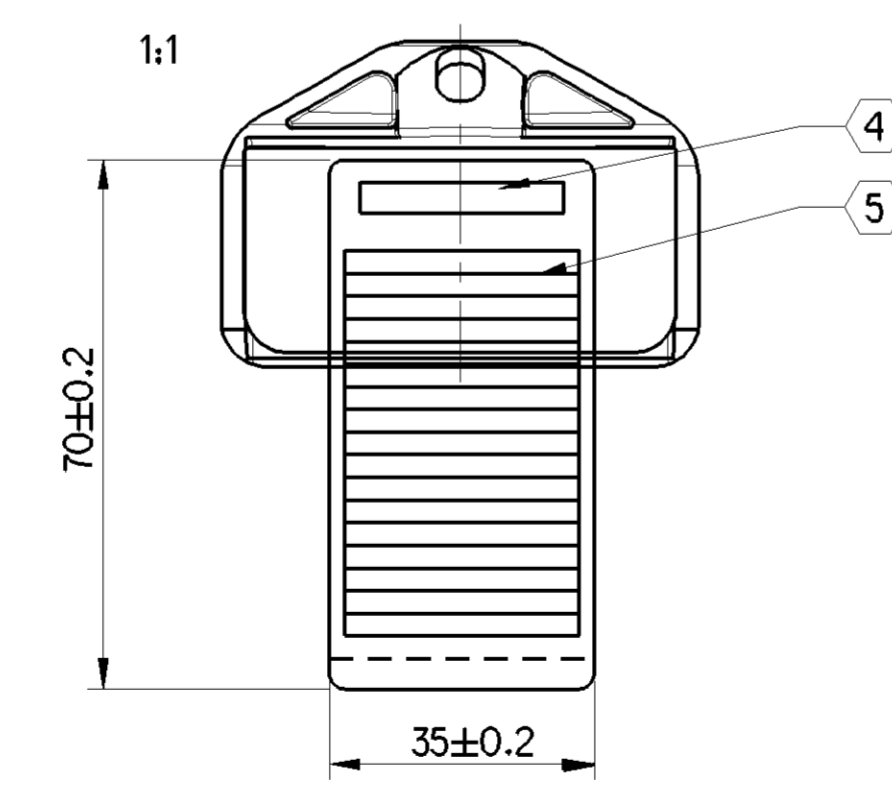
AVOID CONTAMINATION IN PRESSURE PORT AREA  
VERUNREINIGUNGEN IM BEREICH DRUCKMESSEOFFNUNG VERMEIDEN

BAR CODE LABEL BARCODE-ETIKETT			
4	PLAIN TEXT KLARTEXT	CONTENT INHALT	433fxxxxxxxx
5	BAR CODE BARCODE	TYPE CODE 128 ACC. TO Art.: CODE 128 NACH	ISO/IEC 15417
		MODULE WIDTH MODULBREITE	< 0,191 mm
		MODULE WIDTH IS THE SMALLEST LINE OR THE SMALLEST GAP MODULBREITE IST DER KLEINSTE STRICH BZW. DIE KLEINSTE LUECKE	
	CONTENT INHALT	433fxxxxxxxx	
	WITH MIT	433	FREQUENCY (3 DIGITS) FREQUENZ (3 ZIFFERN)
		f	WIS VERSION = VE POWER (1 DIGIT) RADSENSOR-TYP = ERHOEHTE SENDELEISTUNG (1 BUCHSTABE)
		xxxxxxxx	ID NO. (10 DIGITS) ID-NUMMER (10 ZIFFERN)

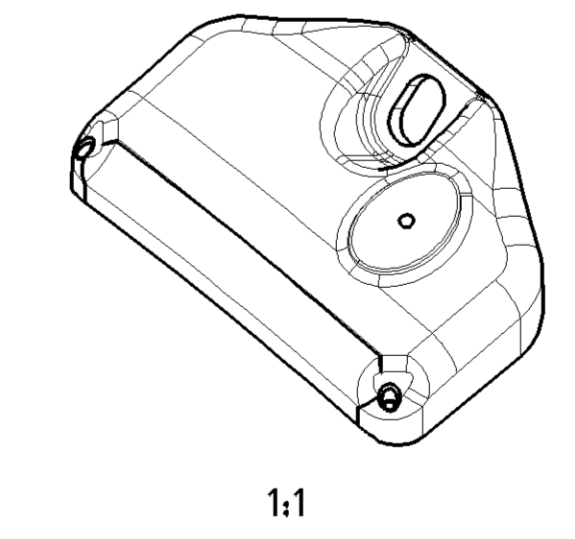


KENNZEICHNUNG  
LETTERING

- Anzugsdrehmoment fuer Schraube  
tightening torque for screw
- CE Zeichen  
CE symbol
- Zulassungshinweis  
type approval note
- WABCO Produktnummer  
WABCO product no.
- Gerätebezeichnung  
device designation
- Herstellungsland  
country of origin
- Produkt bleifrei  
product unleaded
- Zulassungskennzeichnung E1  
typeapproval designation E1
- Pruefplatznummer  
test station no.
- Pruefdatum  
test date
- Herstellerkennung (PRI)  
manufacturer identifier (PRI)
- WABCO-20-JED-369 (Logo)  
ID-Nummer  
ID no.
- Systembezeichnung  
system designation
- Zulassungskennzeichnung FCC  
type approval designation FCC
- Zulassungskennzeichnung IC  
type approval designation IC
- Zulassungskennzeichnung E1 Symbol  
typeapproval designation E1 symbol
- Frequenz  
frequency
- Batterieentsorgung  
battery disposal
- Name und Anschrift Hersteller  
name and address manufacturer
- Hersteller-Logo  
manufacturer logo

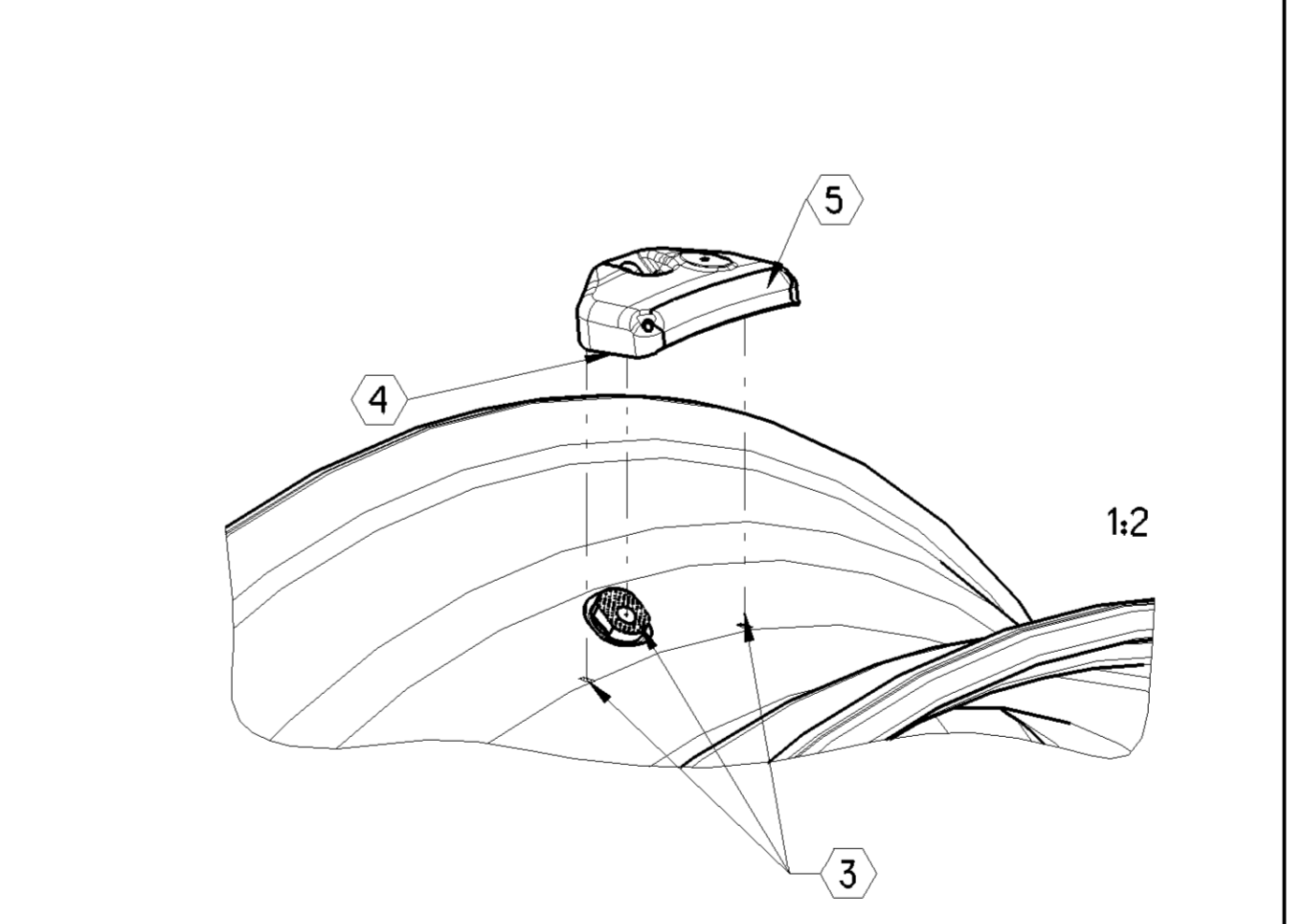
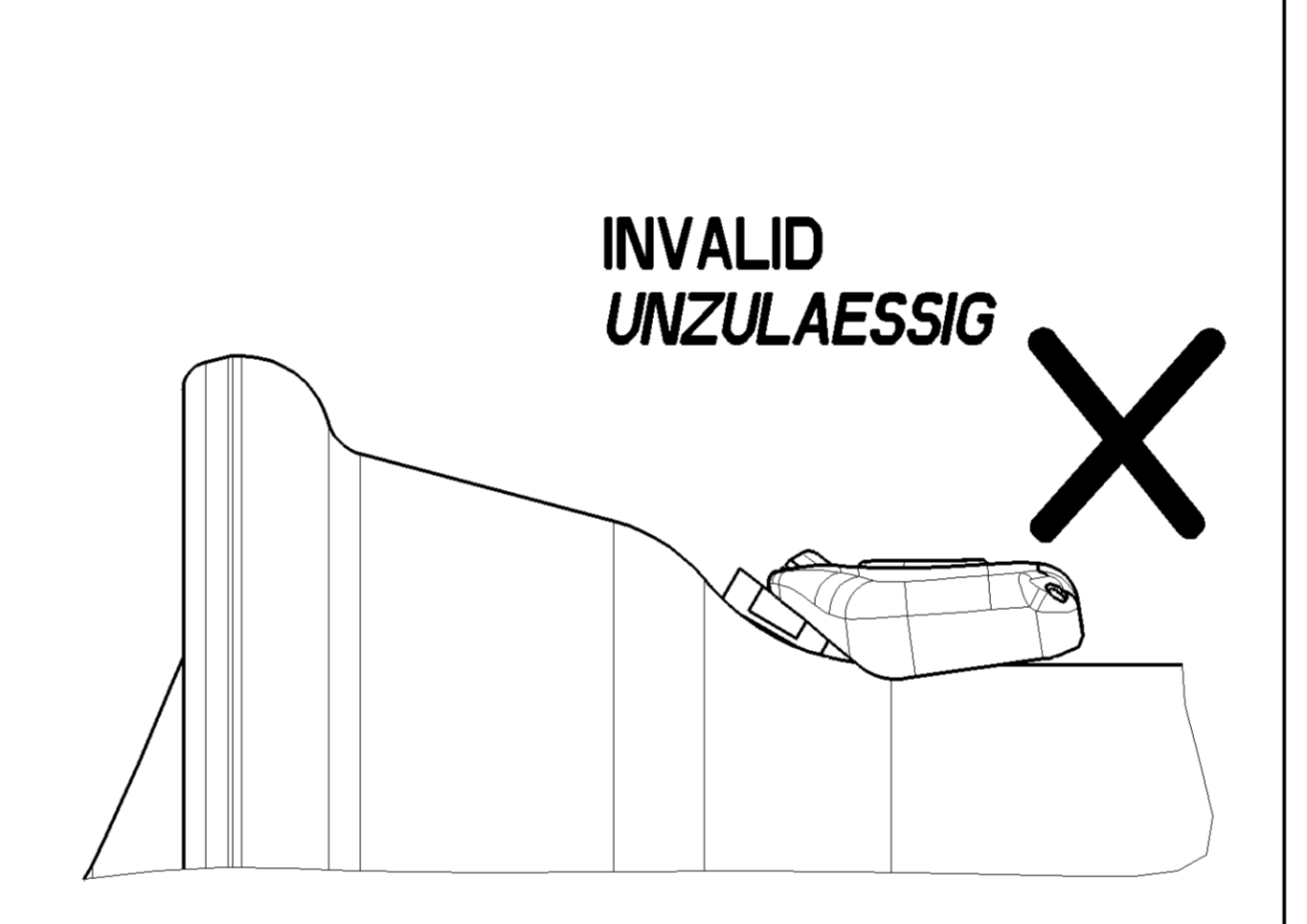
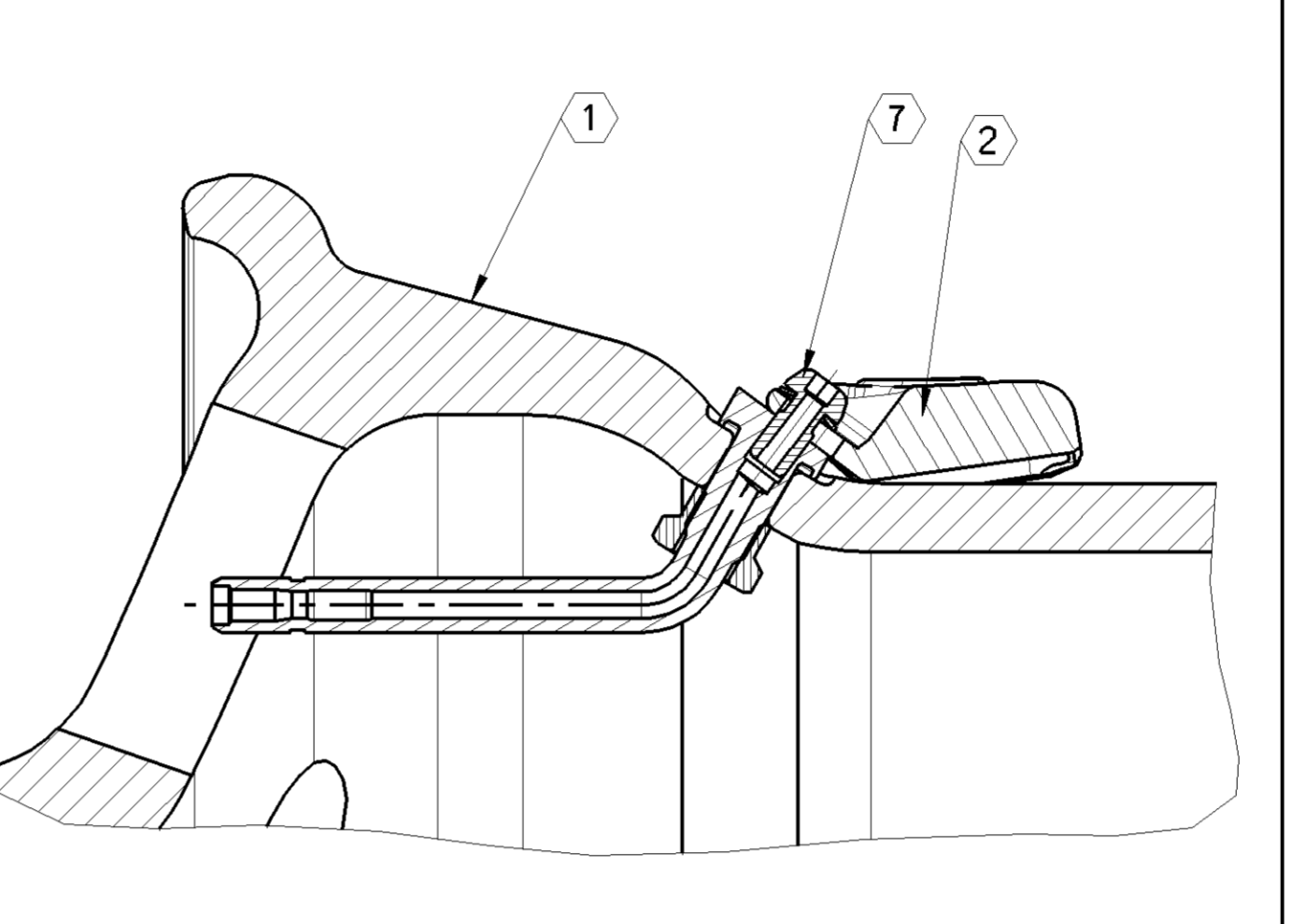
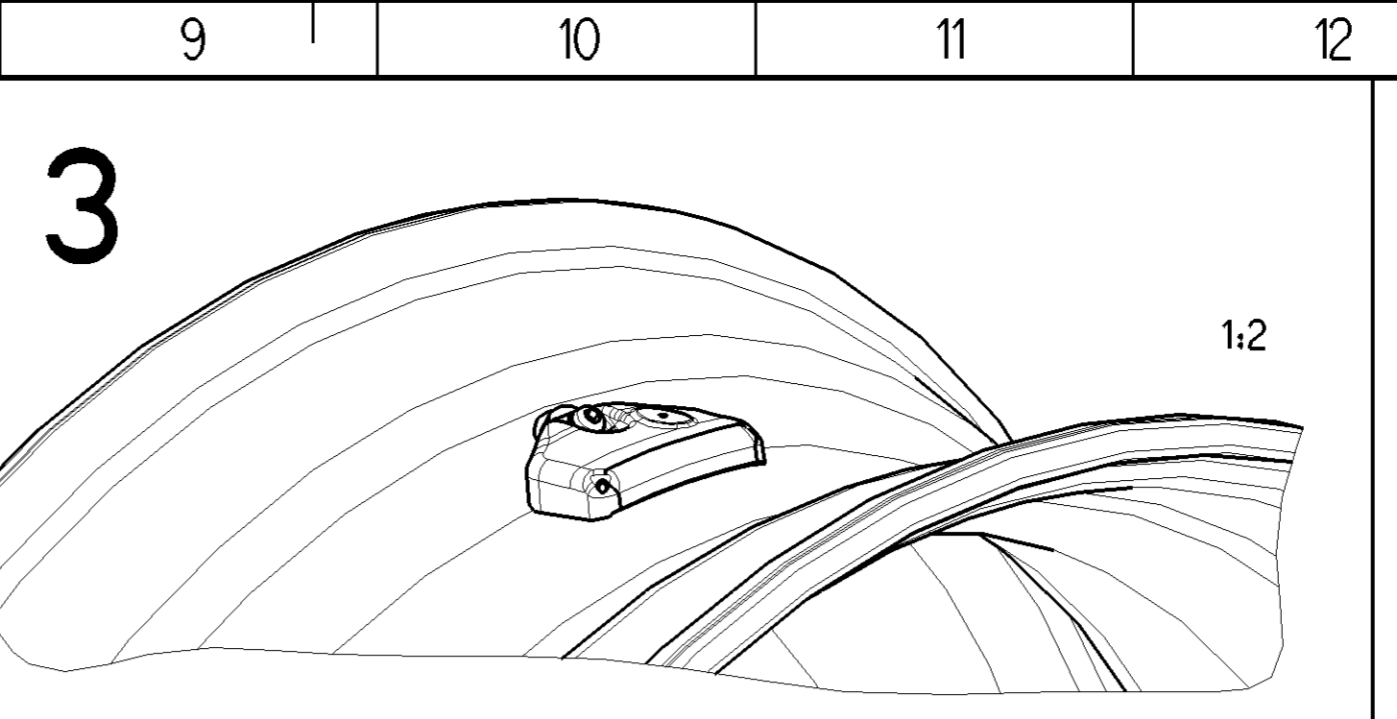
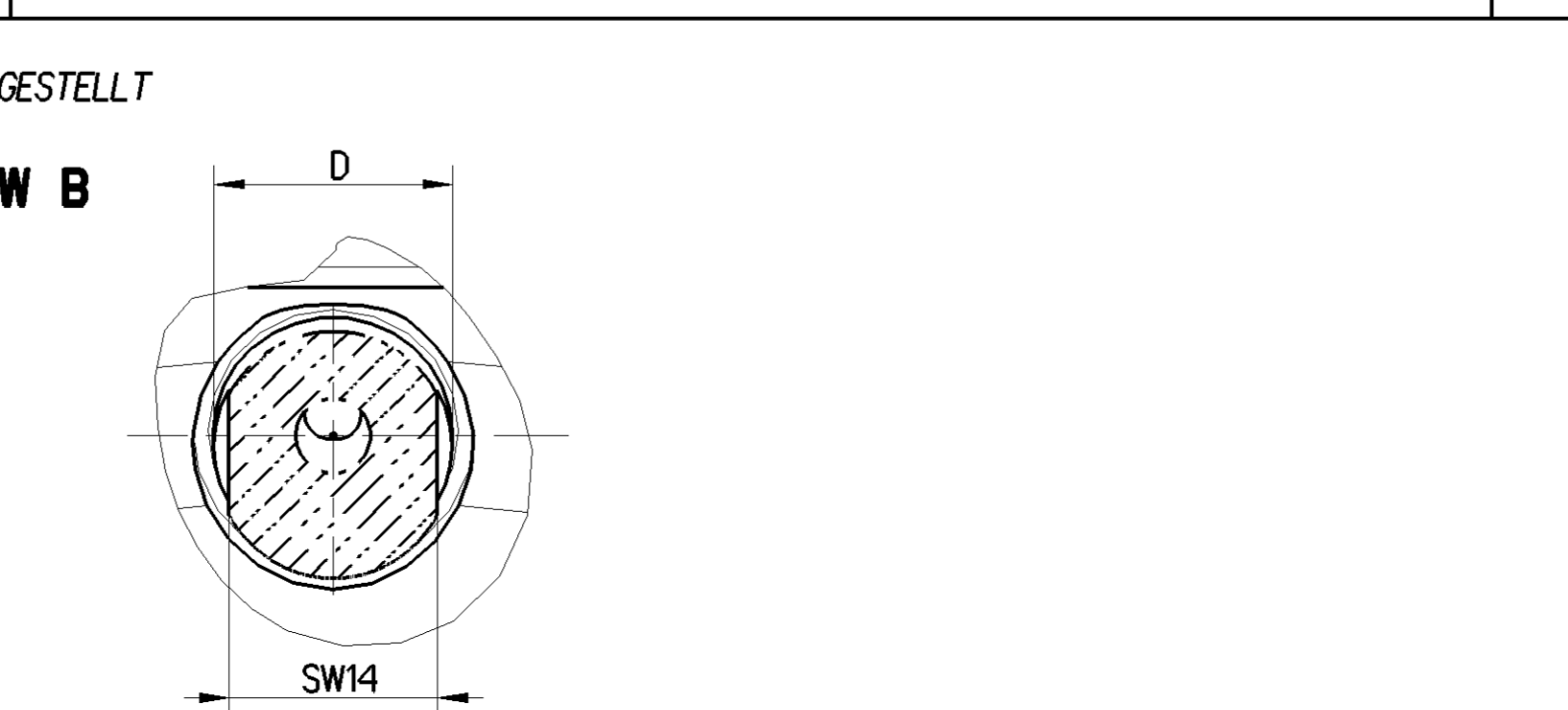
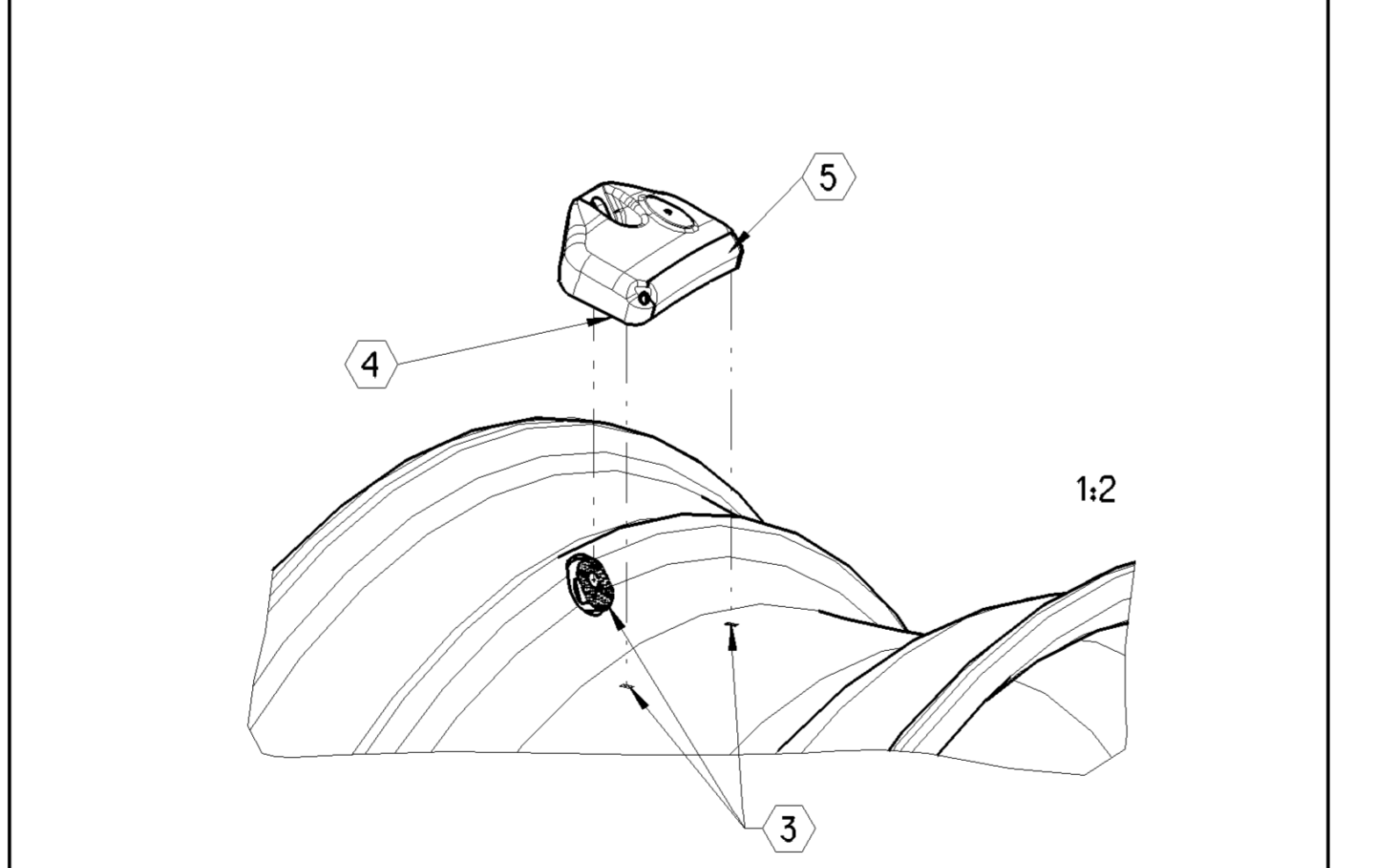
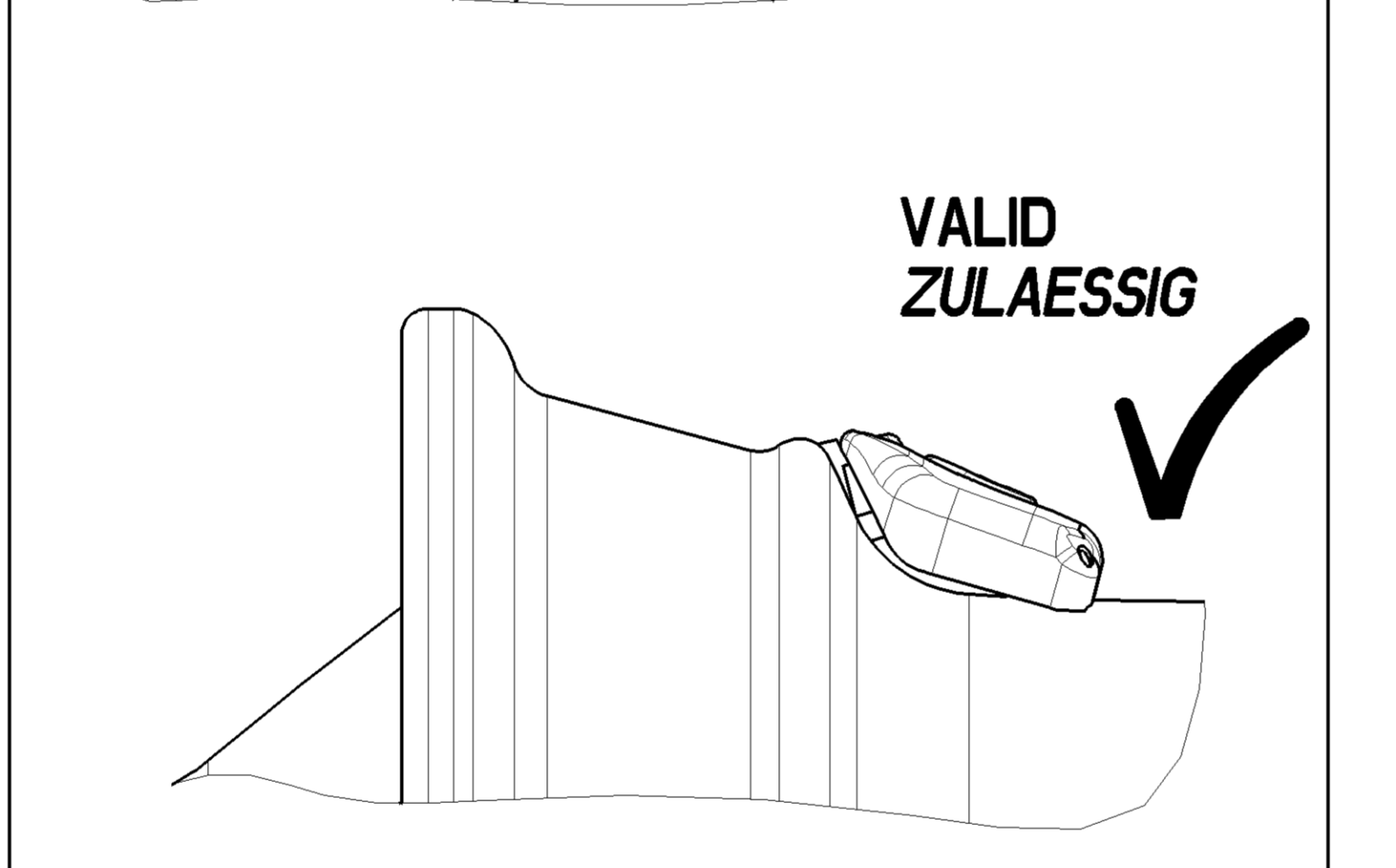
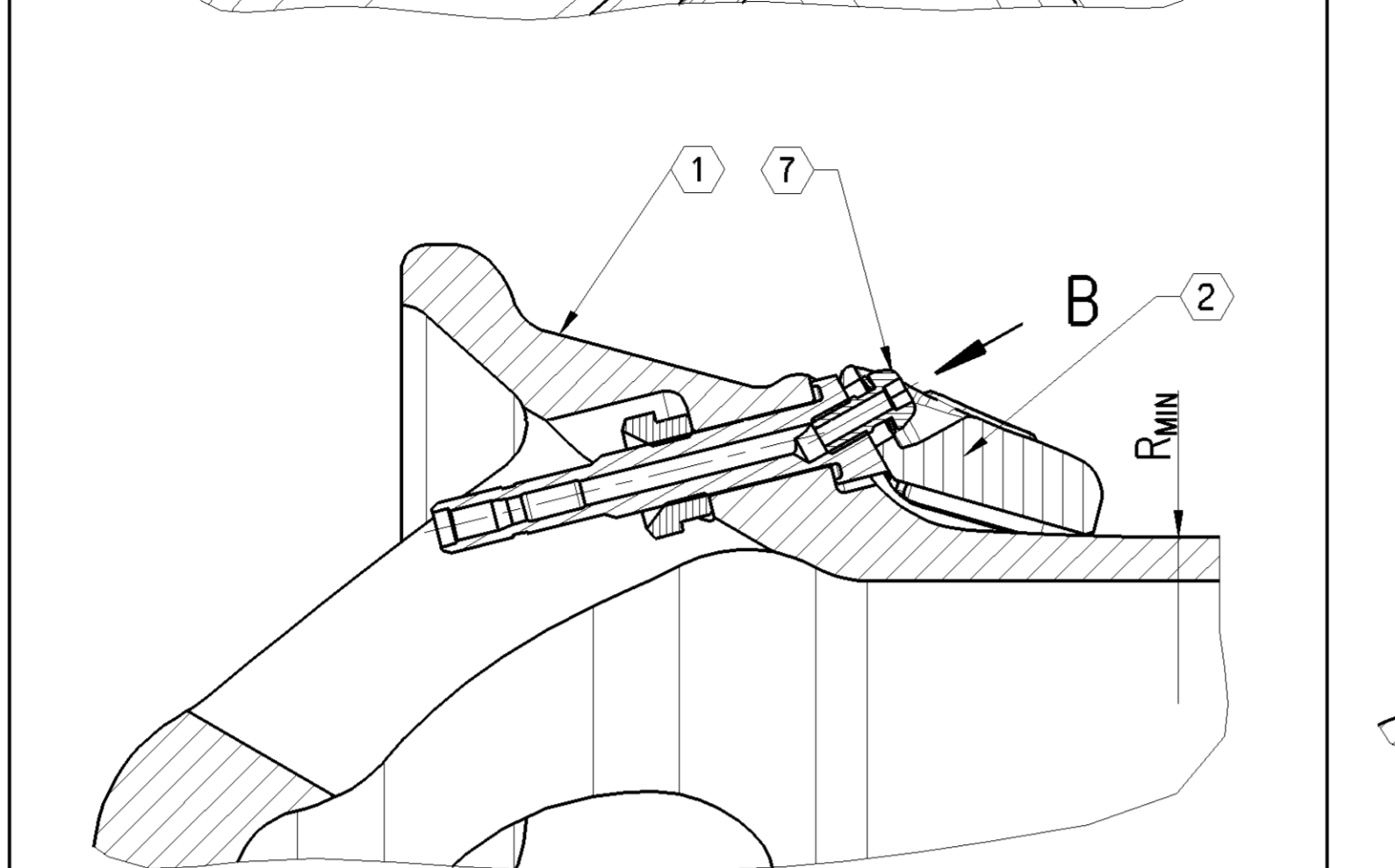
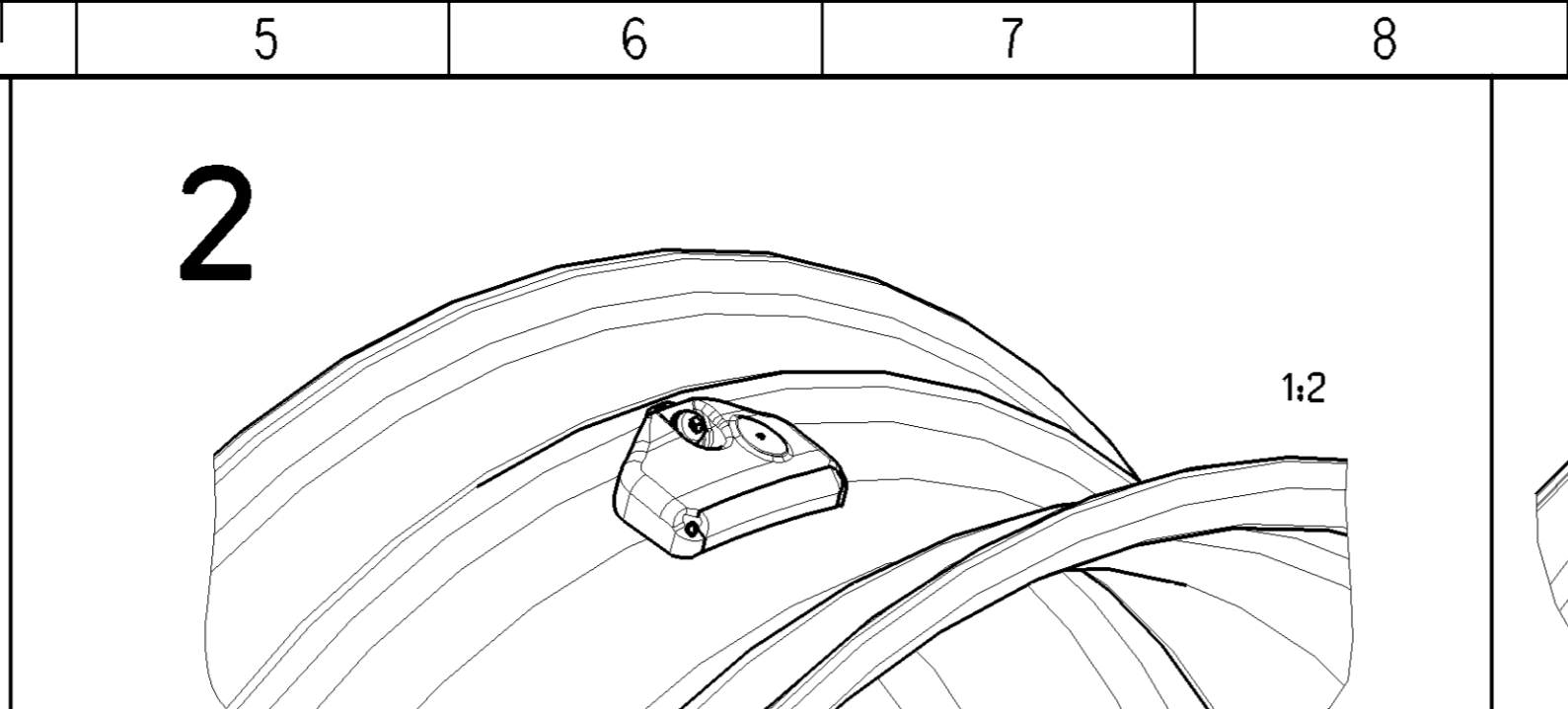
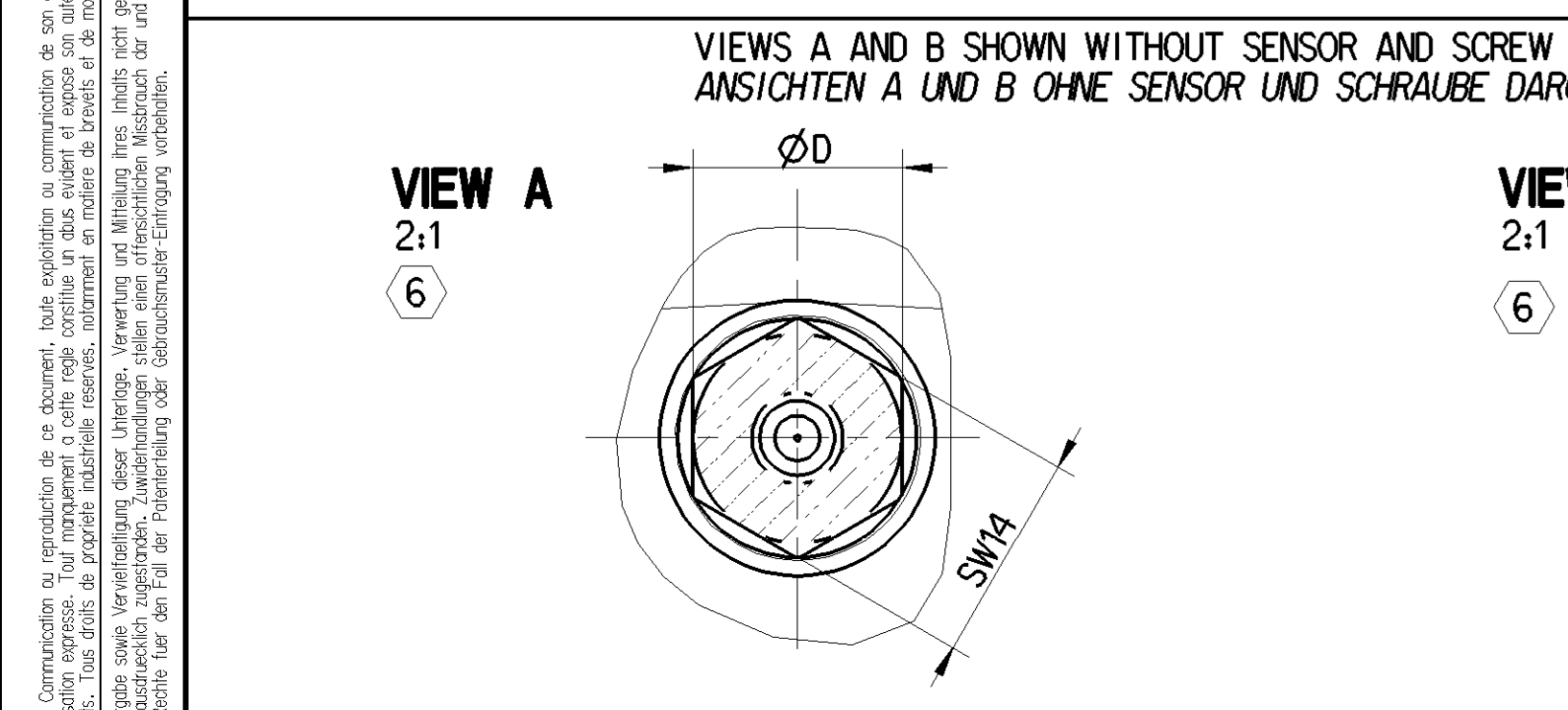
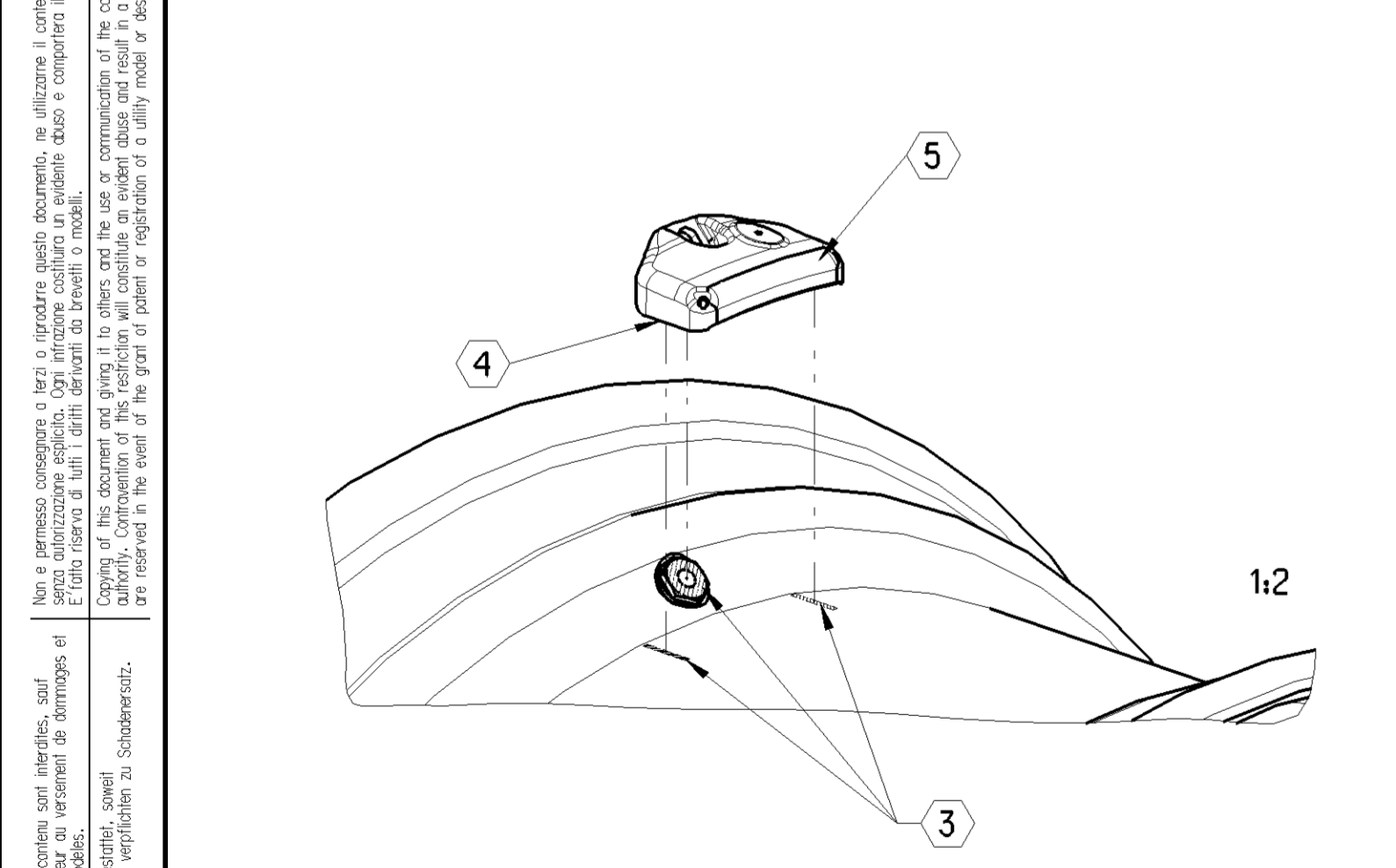
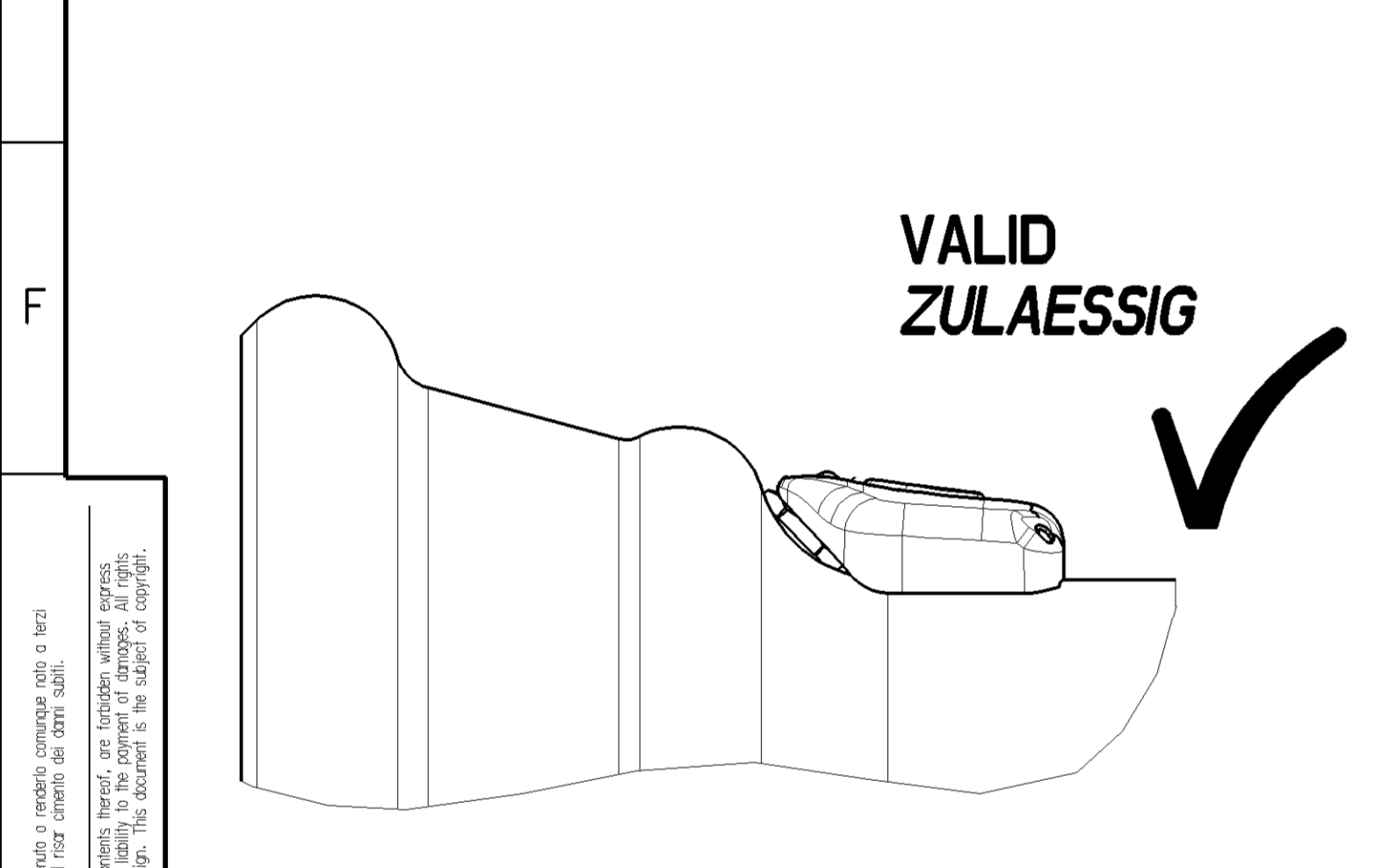
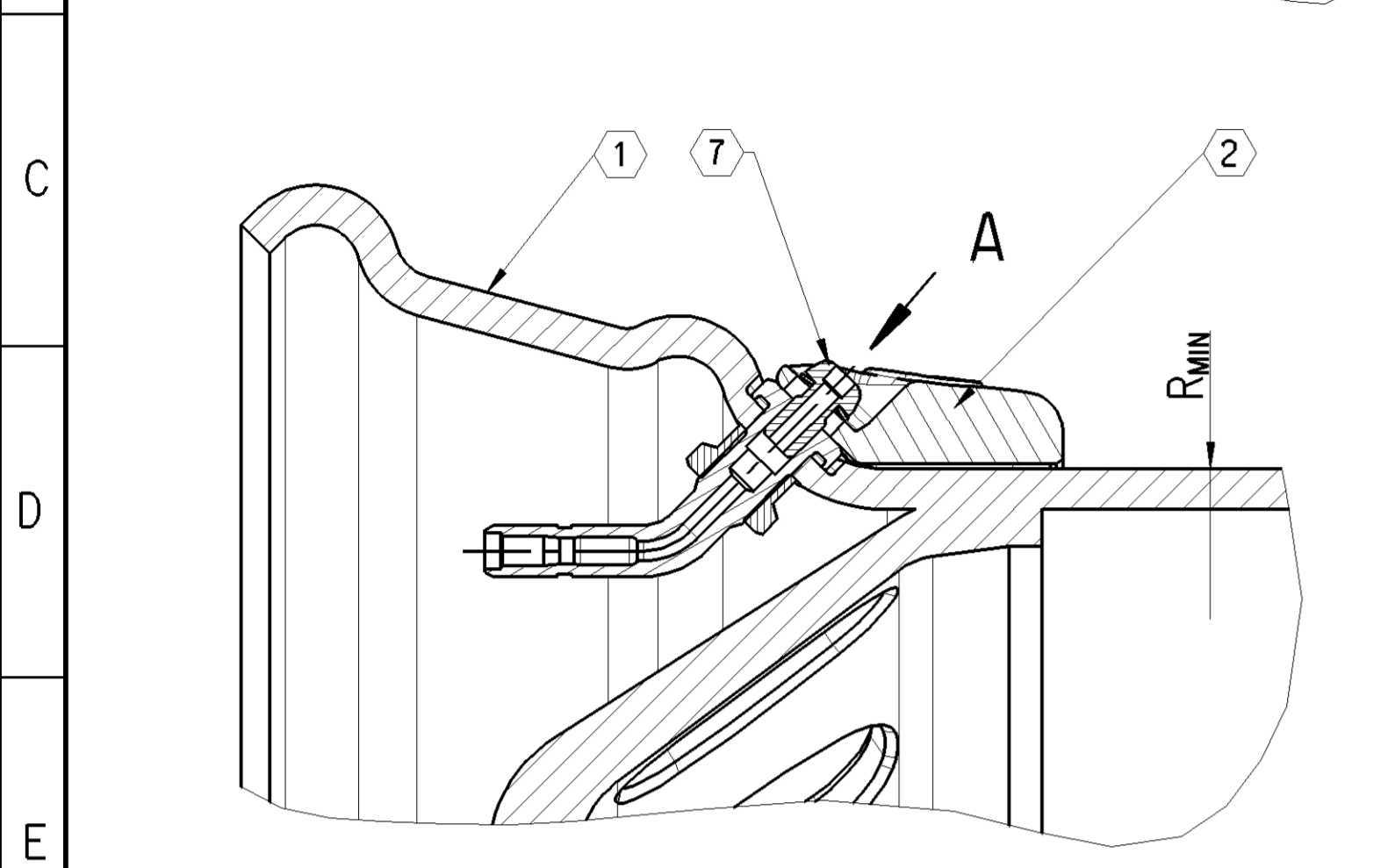
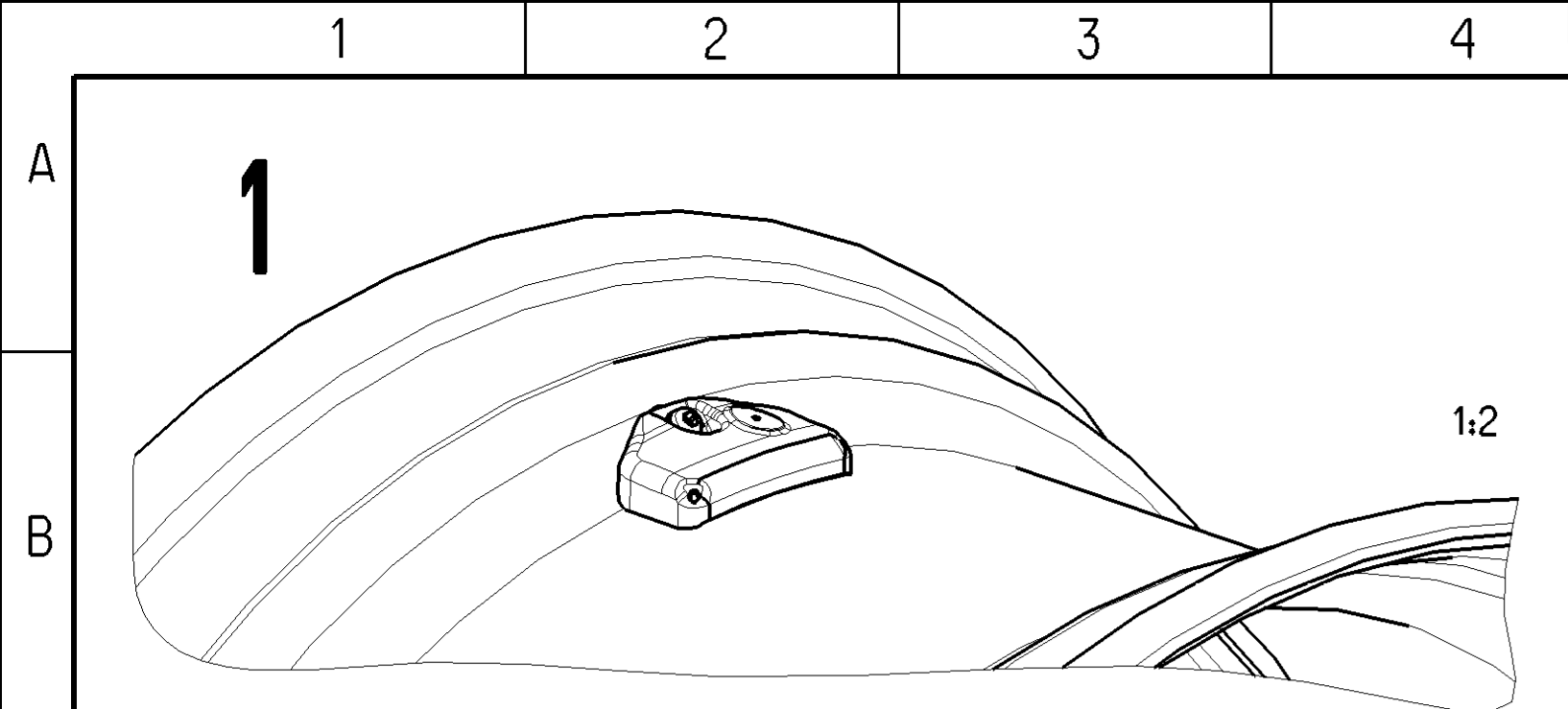


TEMPERATURE PRECISION TEMPERATURGENAUIGKEIT	TEMPERATURE RANGE TEMPERATURBEREICH	MIN	MAX
	-20 °C ... +70 °C	-3 K	+3 K
	-40 °C ... -20 °C	-5 K	+5 K
	+70 °C ... +120 °C		
PRESSURE PRECISION (RELATIVE TO ATMOSPHERE ATMOSPHERE = 100 kPa) DRUCKGENAUIGKEIT (RELATIVE ZUM ATMOSPHAERENDRUCK ATMAOSPHAERENDRUCK = 100 kPa)	TEMPERATURE RANGE TEMPERATURBEREICH	P=0 kPa ... 400 kPa (rel.)	MIN
		+25 °C ... +80 °C	MAX
		-40 °C ... +25 °C	-22 kPa
	+80 °C ... +120 °C	+49.5 kPa	+49.5 kPa
TEMPERATURE RANGE TEMPERATURBEREICH		P=400 kPa ... 1200 kPa (rel.)	MIN
		+25 °C ... +80 °C	MAX
		-40 °C ... +25 °C	-33 kPa
	+80 °C ... +120 °C	-60.5 kPa	+60.5 kPa
FOR PRESSURE VALUES BELOW 0 kPa (REL.) OR ABOVE 1200 kPa (REL.) THE ACCURACY IS NOT SPECIFIED. FUER DRUCKWERTE UNTER 0 kPa (REL.) ODER UEBER 1200 kPa (REL.) IST DIE GENAUIGKEIT NICHT SPEZIFIZIERT.			
THERMAL RANGE OF APPLICATION THERMISCHER ANWENDUNGSBEREICH	-40 °C ... +120 °C		
STORAGE TEMPERATURE LAGERTEMPORATUR	-40 °C ... +70 °C (> +50 °C max 30 DAYS max 30 TAGE)		
RF POWER SENDELEISTUNG	79.5 dBm/m±3 dB AT 25 °C BEI 25 °C		
TRANSMITTER FREQUENCY SENDEFREQUENZ	433.92 MHz ±35 kHz AT 25 °C BEI 25 °C		
MEDIUM MEDIUM	AIR LUFT		
ECE APPROVAL MARK ECE ZULASSUNGSKENNEICHTUNG	10 R-056773 (B)		
FCC APPROVAL MARK FCC ZULASSUNGSKENNEICHTUNG	OYGTSSRE4NE (B)		
IC APPROVAL MARK IC ZULASSUNGSKENNEICHTUNG	3702A-TSSRE4NE (B)		
PRESSURE DATA RANGE DRUCK-DATEN-BEREICH	0 kPa ... 1302.5k Pa (RELATIVE TO ATMOSPHERE, ATMOSPHERE = 100 kPa) (RELATIVE ZUM ATMOSPHAERENDRUCK ATMAOSPHAERENDRUCK = 100 kPa)		
DEGREE OF PROTECTION SCHUTZART	IP5K4		
CLEANLINESS CATEGORY OF COMPONENT (CCC) ACCORDING TO WABCO JED-593 REINHEITSKATEGORIE FUER KOMPONENTEN (CCC) GEMAESS WABCO JED-593	CCC = A(K00), FLAECHE / SURFACE AF = 73.67cm <sup>2</sup>		
1 HOUSING GEHAUESE	PBT-GF30		
2 GROUTING VERGUSS	POLYBUTADIEN		
3 VIEWS SHOWN WITHOUT BARCODE LABEL ANSICHTEN OHNE DARSTELLUNG DES BARCODE-ETIKETTS			
INTERFACE SPECIFICATION SEE SHEET SCHNITTSTELLENSPEZIFIKATION SIEHE BLATT	2		



General Specifications: JED-334-1 - Size ISO 14405 LP		Copyright WABCO®	
Further Technical Data: 960 732 000 0		Date	Signature
Doc. Code: 035	Sheet: 1 To X	2021-02-02	Markuszewski
General Tolerances JED-261		2021-02-02 Lesik	
Range of Nominal Dimensions (± mm)		Expert	
Class	1) ≤ 50	2) 50 > 180	3) 180 > 400
Fine	0.5	1.0	1.5
Medium	1.0	2.0	3.0
Coarse	2.0	3.5	5.0
Tapped Holes acc. -/-		±3°	
1) Tolerance Class Applied Crossmarked		Comelius C.	
Mass	Scale	Material No.	Date of first issue: 2015-03-06
0.037	1:1	960 732 000 0	Doc.Code Language Sheet
kg		005	DE 1/2
Size	CAD System	ECH-NO.	Revision
A 1	CREO	504744	4x B 6034_TPS
		Tech. Resp.	
		Replacement for	

Non e permesso copiare o riprodurre questo documento, ne utilizzare il contenuto o renderlo comunque noto a terzi.  
 Toute communication ou reproduction de ce document, toute exploitation ou communication de son contenu sans autorisation, sont interdites.  
 This document and its contents are the property of WABCO. All rights reserved. No part of this document may be reproduced, stored in a retrieval system, or transmitted in any form or by any means, electronic, mechanical, photocopying, recording, or by any information storage and retrieval system, without the prior written permission of WABCO.



**EXAMPLE FOR INSTALLATION SITUATIONS**  
**BEISPIELE FUER EINBAUSITUATIONEN**

1	✓	PLANAR SURFACE OF WHEEL INTERNAL SENSOR (WIS) ON RIM WELL PLANARE AUFLAGE DER RADELEKTRONIK (WIS) AUF FELGENBETT FOR THE WHEEL INTERNAL SENSOR (WIS) A 3-POINT-BEARING IS REQUIRED. HOUSING FEET MUST REST ON THE RIM WELL OVER THEIR TOTAL LENGTH. FUER DEN INTERNEN RADSENSOR (WIS) IST EINE 3-PUNKT-LAGERUNG ERFORDERLICH. DIE GEHAUSEFUESSE SOLLTEN UEBER IHRE GESAMTLAENGE VOLLSTAENDIG AUF DEM FELGENBETT AUFLIEGEN. $R_{MIN}$ OF RIM WELL $R_{MIN}$ DES FELGENBETTES	200mm
2	✓	POSITIVE SLOPING POSITION OF WHEEL INTERNAL SENSOR (WIS) TO RIM WELL POSITIVE SCHRAEGLAG E DER RADELEKTRONIK (WIS) ZUM FELGENBETT FOR THE WHEEL INTERNAL SENSOR (WIS) A 3-POINT-BEARING IS REQUIRED. THE REAR ENDS OF THE HOUSING FEET MUST REST ON THE RIM WELL. FUER DEN INTERNEN RADSENSOR (WIS) IST EINE 3-PUNKT-LAGERUNG ERFORDERLICH. DIE HINTEREN ENDEN DER GEHAUSEFUESSE MUESSEN AUF DEM FELGENBETT AUFLIEGEN. $R_{MIN}$ OF RIM WELL $R_{MIN}$ DES FELGENBETTES	254mm
3	✗	NEGATIVE SLOPING POSITION OF WHEEL INTERNAL SENSOR (WIS) TO RIM WELL NEGATIVE SCHRAEGLAG E DER RADELEKTRONIK (WIS) ZUM FELGENBETT FOR THE WHEEL INTERNAL SENSOR (WIS) A 3-POINT-BEARING IS REQUIRED. THE REAR ENDS OF THE HOUSING FEET MUST NOT LIFT OFF FROM THE RIM WELL. FUER DEN INTERNEN RADSENSOR (WIS) IST EINE 3-PUNKT-LAGERUNG ERFORDERLICH. DIE HINTEREN ENDEN DER GEHAUSEFUESSE DUERFEN NICHT VOM FELGENBETT ABHEBEN.	

**NOTE**  
**BEMERKUNG**

1	CROSS SECTION OF RIM (SAMPLE SHAPE) FELGENQUERSCHNITT (BEISPIELKONTUR)		
2	WHEEL INTERNAL SENSOR (WIS) INTERNER RADSENSOR (WIS)		
3	3-POINT-BEARING 3-PUNKT-AUFLAGE		
4	HOUSING FOOT (LEFT) GEHAUSEFUUSS (LINKS)		
5	HOUSING FOOT (RIGHT), NOT VISIBLE IN THIS VIEW GEHAUSEFUUSS (RECHTS), NICHT SICHTBAR IN DIESER ANSICHT		
6	REQUIREMENTS FOR VALVE HEAD DIFFERENT SHAPES ARE POSSIBLE, SEE VIEWS A AND B ANFORDERUNGEN AN DEN VENTILKOPF UNTERSCHIEDLICHE FORMEN SIND MOEGLICH, SIEHE ANSICHTEN A UND B WRENCH SIZE SCHLUESSELWEITE	SW 14	
	VALVE HEAD DIMENSIONS VENTILKOPFABMESSUNGEN	D MIN. 15mm D MAX. 17mm	
	REQUIREMENTS FOR HOLLOW SCREW TO FIX WHEEL INTERNAL SENSOR (WIS) ON VALVE ANFORDERUNGEN AN HOHLSCHRAUBE ZUR BEFESTIGUNG DES INTERNEN RADSENSORS AM VENTIL		
	APPLICABLE HOLLOW SCREWS SCREW NOT SUPPLIED WITH SENSOR VERWENDBARE HOHLSCHRAUBEN SCHRAUBE GEHOERT NICHT ZUM LIEFERUMPFANG DES SENSORS	HEXAGON SOCKET INNENSECHSKANT TORX TORX	SW4 960 732 001 4 T20 960 732 002 4
7	THREAD GEWINDE	M6	
	SCREW HEAD HEIGHT SCHRAUBENKOPFHOEHE	MAX. 4,0 mm	
	SCREW HEAD DIAMETER SCHRAUBENKOPFDURCHMESSER	MIN. 9,7 mm MAX. 10,7 mm	
	TIGHTENING TORQUE ANZUGSMOMENT	4,0 ±0,5 Nm	
	SCREW MUST NOT LOOSEN ITSELF INDEPENDENTLY SCHRAUBE DARF SICH NICHT SELBSTAENDIG LOESEN		
	DIMENSIONING OF WHEEL INTERNAL SENSOR (WIS) SEE SHEET 1 BEMASSUNG DES INTERNEN RADSENSORS SIEHE BLATT 1		

General Specification:	JED-334-1 - Size ISO 14405 LP	Copyright WABCO®		
Further Technical Data:	960 732 000 0	Date		
Doc. Code:	035	Sheet:	1 To X	
General Tolerances JED-261		Drawn:	2021-02-02   Markuszewski	
Range of Nominal Dimensions ( ± mm )		Checked:	2021-02-02   Lesik	
Class	1) ≤ 50	2) 50 > 180	3) 180 ≤ 400	4) > 400
Fine	X 0,5	1,0	1,5	2,0
Medium	1,0	2,0	3,0	4,0
Coarse	2,0	3,5	5,0	6,5
Tapped Holes acc. -/-		1) Tolerance Class Applied Crossmarked		

<b>WABCO</b>		OptiTire WHEEL INTERNAL SENSOR (WIS) OptiTire INTERNER RADSENSOR	
Material No.	960 732 000 0	Date of first issue:	2016-03-06
Doc. Code	005	Language	DE
Revision	005	Sheet	2/2
ECH-NO.	504744	Techn. Resp.	B 6034_TPS
Scale	1:1	Replacement for	

Tutti i diritti sono riservati. È vietata espressamente la ristampa o l'uso non autorizzato senza permesso scritto dalla WABCO. Tutti i diritti sono riservati. Toute réimpression ou utilisation non autorisée sans la permission écrite de la WABCO est formellement interdite. Toute réimpression ou utilisation non autorisée sans la permission écrite de la WABCO est formellement interdite. All rights reserved. No part of this document may be reproduced, stored in a retrieval system, or transmitted in any form or by any means, electronic, mechanical, photocopying, recording, or by any information storage and retrieval system, without the prior written permission of WABCO. All rights reserved.