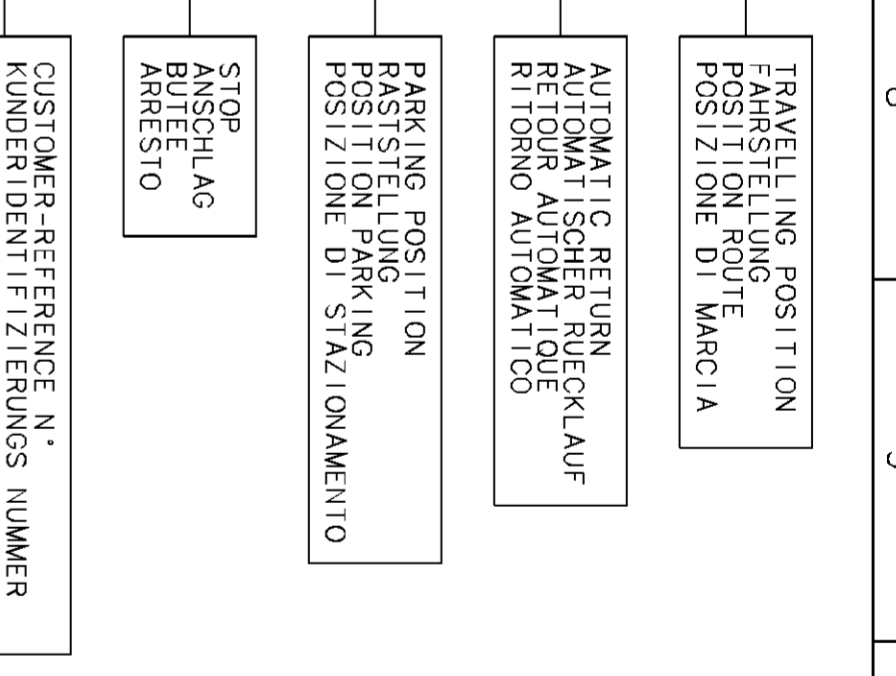
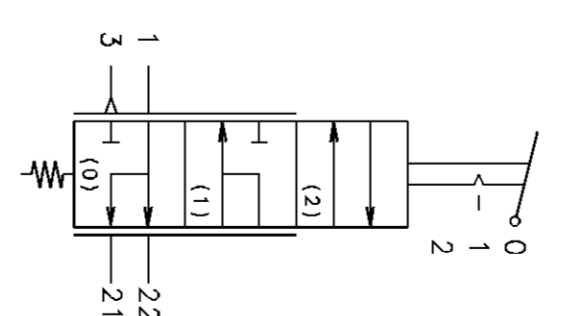


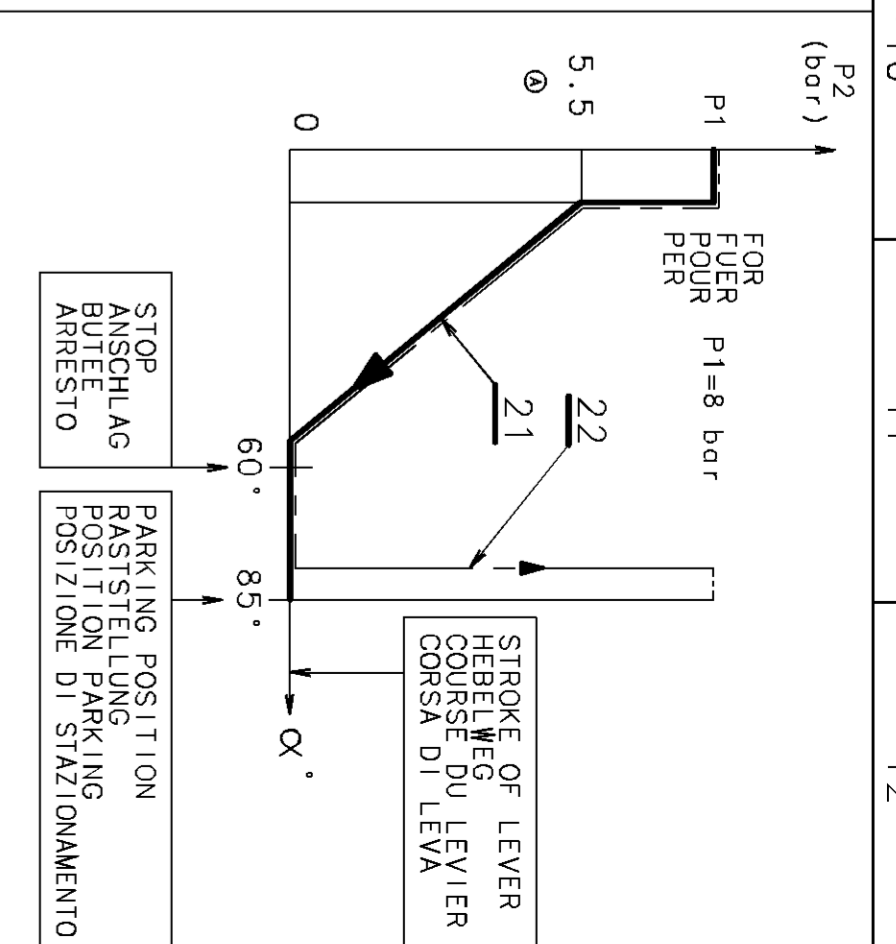
TORQUE
ANZUGSMOMENT
COUPLE DE SERRAGE
COPPIA DI SERRAGGIO
MAX. 34 Nm
3xM16x1.5
JED 464



CUSTOMER-REFERENCE N°
KUNDENREFERENZ-NUMMER
N° REFERENCE CLIENT
NUMERI D'IDENTIFICAZIONE CLIENTE



TESTING SCHEME
SYMBOL SCHEMA DE PRINCIPES
SCHEMA DI PRINCIPIO



NOTICE: COMMUNICATION OF REPRODUCTION OF THIS DOCUMENT, OR THE USE OR COMMUNICATION OF THE CONTENTS OF THIS DOCUMENT, WITHOUT THE EXPRESS AUTHORITY OF THE AUTHOR, IS PROHIBITED. ALL RIGHTS ARE RESERVED IN THE EVENT OF THE GRANT OF A PATENT OR THE REGISTRATION OF AN UTILITY MODEL OR DESIGN. THIS DRAWING IS SUBJECT TO COPYRIGHT.

1 SUPPLY
VORRAT
ALIMENTAZIONE

2 SPRING BRAKE CYLINDER
FEDERSPEICHERZYLINDER
CYLINDRO A RISSORT

3 TRAILER CONTROL VALVE
ANHAENGER STEUERVENTIL
VALVOLA DI CONTROLLO DI REMORCHIO

EXHAUST
ENTLUFTUNG
SCARICO

MEDIUM : AIR
FLUIDE : LUFT
FLUIDO : ARIA

THERMICAL RANGE
THERMISCHER ANWENDUNGSBEREICH
TEMPERATURE D'UTILISATION
TEMPERATURA DI UTILIZZAZIONE
-40°...+80°C

P₁ = 10 bar MAX.

CLASS	1	2	3	4	5	6	7	8	9
TAPERED HOLES ACC. ISO 4028 / JED-152	0.5	1.0	1.5	2.0	3.0	4.0	5.0	6.5	8.0
TOLERANCE CLASS APPL. TO CROSSHAIRS	11	11	11	11	11	11	11	11	11

IDENTIFICATION NO.	DATE	BY	REVISION	DATE
89-09-12	1989-09-12	ROLLAND	1	
89-09-12	1989-09-12	BIBON	2	
89-09-12	1989-09-12	BIBON	3	
89-09-12	1989-09-12	BIBON	4	
89-09-12	1989-09-12	BIBON	5	
89-09-12	1989-09-12	BIBON	6	
89-09-12	1989-09-12	BIBON	7	
89-09-12	1989-09-12	BIBON	8	
89-09-12	1989-09-12	BIBON	9	
89-09-12	1989-09-12	BIBON	10	
89-09-12	1989-09-12	BIBON	11	
89-09-12	1989-09-12	BIBON	12	
89-09-12	1989-09-12	BIBON	13	
89-09-12	1989-09-12	BIBON	14	
89-09-12	1989-09-12	BIBON	15	
89-09-12	1989-09-12	BIBON	16	
89-09-12	1989-09-12	BIBON	17	
89-09-12	1989-09-12	BIBON	18	
89-09-12	1989-09-12	BIBON	19	
89-09-12	1989-09-12	BIBON	20	
89-09-12	1989-09-12	BIBON	21	
89-09-12	1989-09-12	BIBON	22	
89-09-12	1989-09-12	BIBON	23	
89-09-12	1989-09-12	BIBON	24	
89-09-12	1989-09-12	BIBON	25	
89-09-12	1989-09-12	BIBON	26	
89-09-12	1989-09-12	BIBON	27	
89-09-12	1989-09-12	BIBON	28	
89-09-12	1989-09-12	BIBON	29	
89-09-12	1989-09-12	BIBON	30	
89-09-12	1989-09-12	BIBON	31	
89-09-12	1989-09-12	BIBON	32	
89-09-12	1989-09-12	BIBON	33	
89-09-12	1989-09-12	BIBON	34	
89-09-12	1989-09-12	BIBON	35	
89-09-12	1989-09-12	BIBON	36	
89-09-12	1989-09-12	BIBON	37	
89-09-12	1989-09-12	BIBON	38	
89-09-12	1989-09-12	BIBON	39	
89-09-12	1989-09-12	BIBON	40	
89-09-12	1989-09-12	BIBON	41	
89-09-12	1989-09-12	BIBON	42	
89-09-12	1989-09-12	BIBON	43	
89-09-12	1989-09-12	BIBON	44	
89-09-12	1989-09-12	BIBON	45	
89-09-12	1989-09-12	BIBON	46	
89-09-12	1989-09-12	BIBON	47	
89-09-12	1989-09-12	BIBON	48	
89-09-12	1989-09-12	BIBON	49	
89-09-12	1989-09-12	BIBON	50	
89-09-12	1989-09-12	BIBON	51	
89-09-12	1989-09-12	BIBON	52	
89-09-12	1989-09-12	BIBON	53	
89-09-12	1989-09-12	BIBON	54	
89-09-12	1989-09-12	BIBON	55	
89-09-12	1989-09-12	BIBON	56	
89-09-12	1989-09-12	BIBON	57	
89-09-12	1989-09-12	BIBON	58	
89-09-12	1989-09-12	BIBON	59	
89-09-12	1989-09-12	BIBON	60	
89-09-12	1989-09-12	BIBON	61	
89-09-12	1989-09-12	BIBON	62	
89-09-12	1989-09-12	BIBON	63	
89-09-12	1989-09-12	BIBON	64	
89-09-12	1989-09-12	BIBON	65	
89-09-12	1989-09-12	BIBON	66	
89-09-12	1989-09-12	BIBON	67	
89-09-12	1989-09-12	BIBON	68	
89-09-12	1989-09-12	BIBON	69	
89-09-12	1989-09-12	BIBON	70	
89-09-12	1989-09-12	BIBON	71	
89-09-12	1989-09-12	BIBON	72	
89-09-12	1989-09-12	BIBON	73	
89-09-12	1989-09-12	BIBON	74	
89-09-12	1989-09-12	BIBON	75	
89-09-12	1989-09-12	BIBON	76	
89-09-12	1989-09-12	BIBON	77	
89-09-12	1989-09-12	BIBON	78	
89-09-12	1989-09-12	BIBON	79	
89-09-12	1989-09-12	BIBON	80	
89-09-12	1989-09-12	BIBON	81	
89-09-12	1989-09-12	BIBON	82	
89-09-12	1989-09-12	BIBON	83	
89-09-12	1989-09-12	BIBON	84	
89-09-12	1989-09-12	BIBON	85	
89-09-12	1989-09-12	BIBON	86	
89-09-12	1989-09-12	BIBON	87	
89-09-12	1989-09-12	BIBON	88	
89-09-12	1989-09-12	BIBON	89	
89-09-12	1989-09-12	BIBON	90	