

← THE LOCKING DEVICE MUST AUTOMATICALLY AND SAFELY LOCK THE HANDLE IN THE PARKING POSITION

← SAFETY CHARACTERISTICS	1
↔ SIGNIFICANT CHARACTERISTICS	2

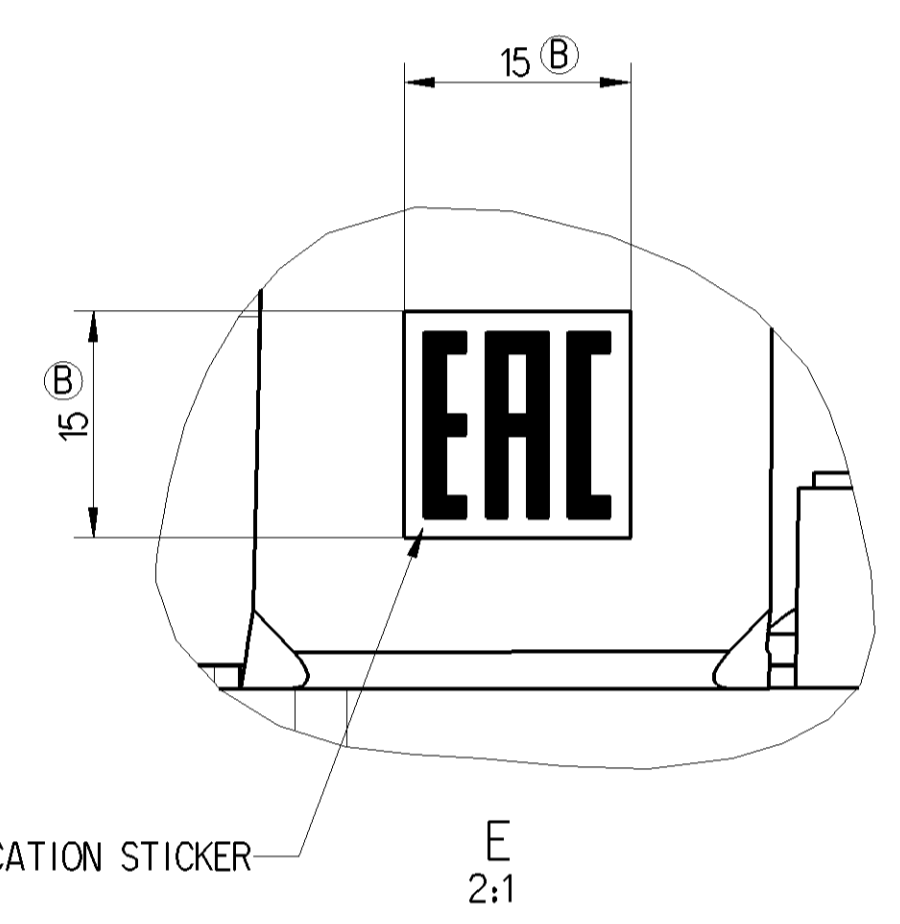
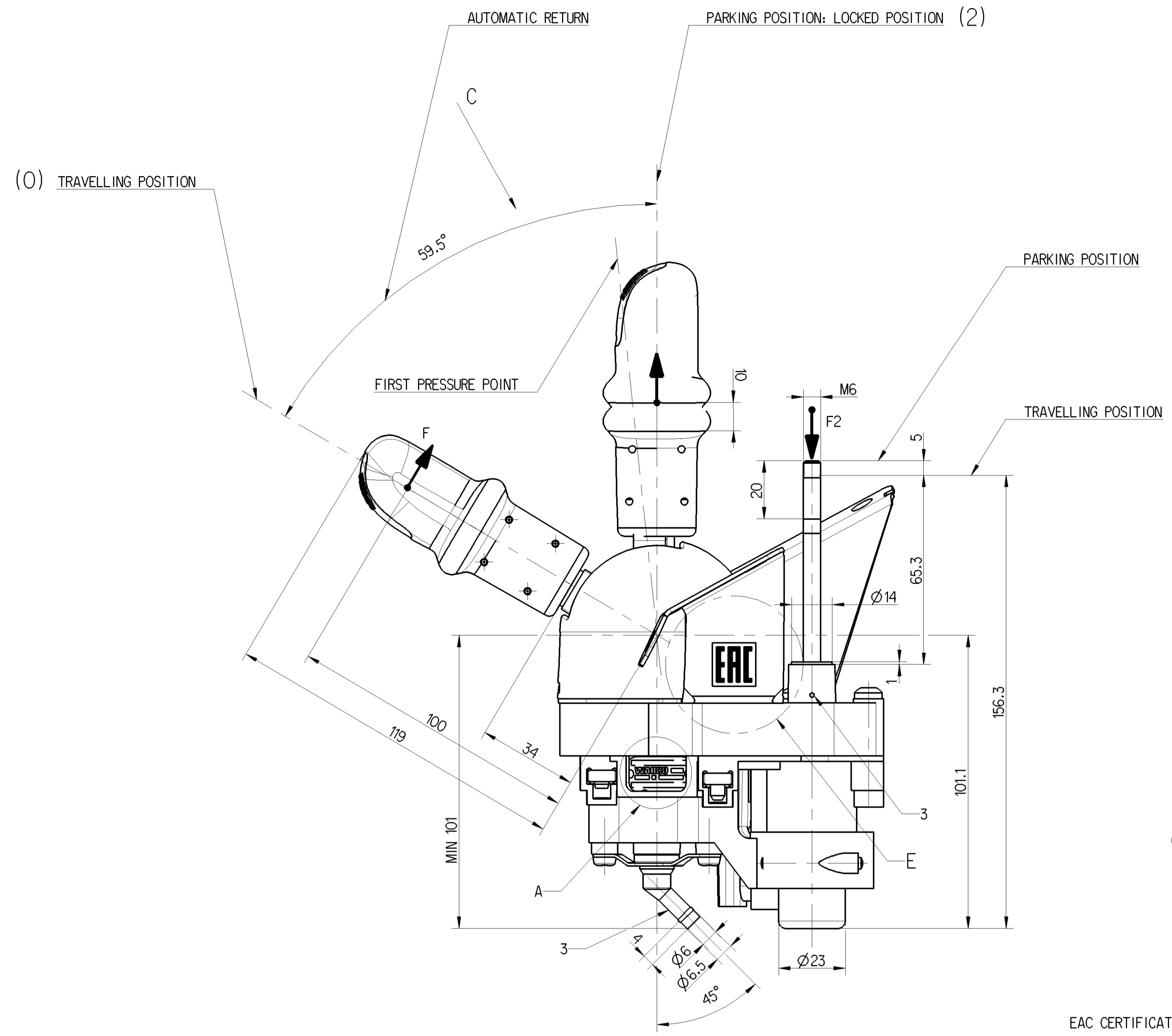
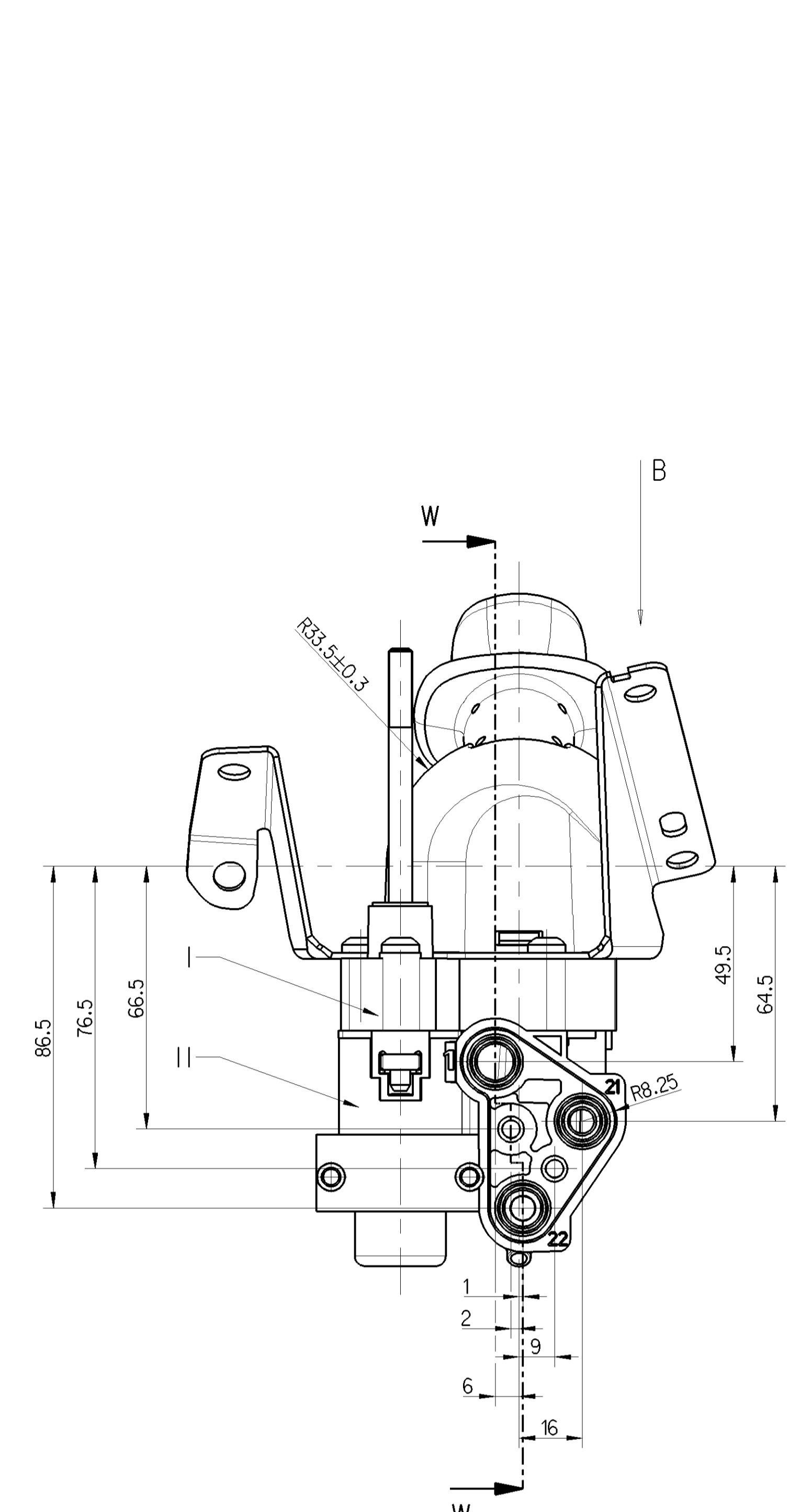
MARKING OF PORTS

1	SUPPLY
21	SPRING BRAKE CYLINDER
22	TRAILER CONTROL VALVE
3	EXHAUST

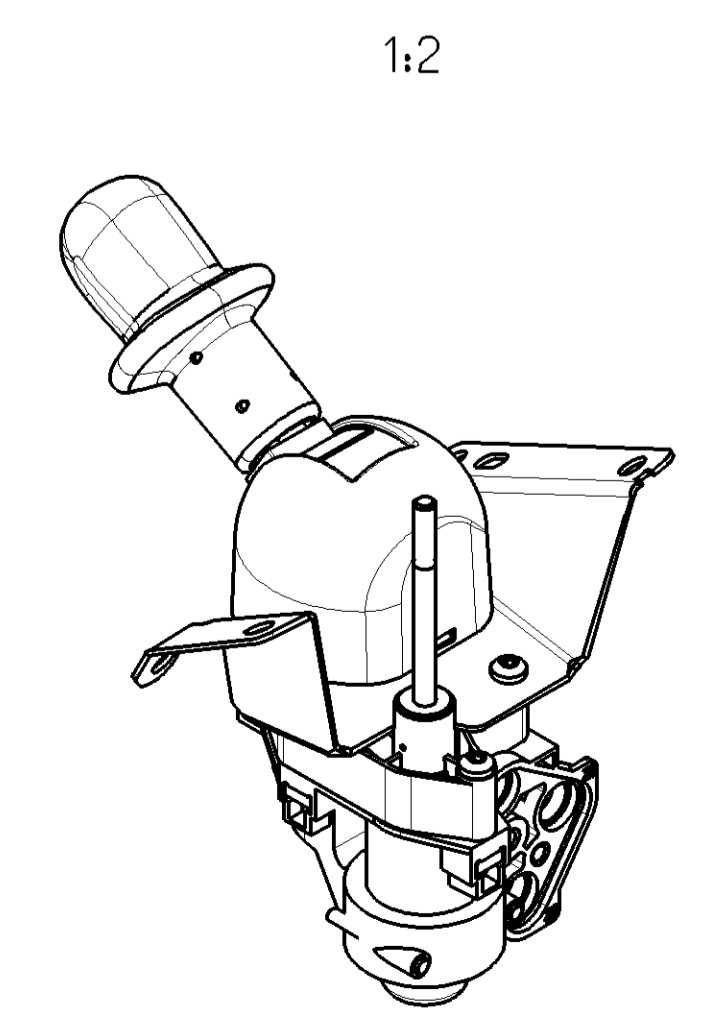
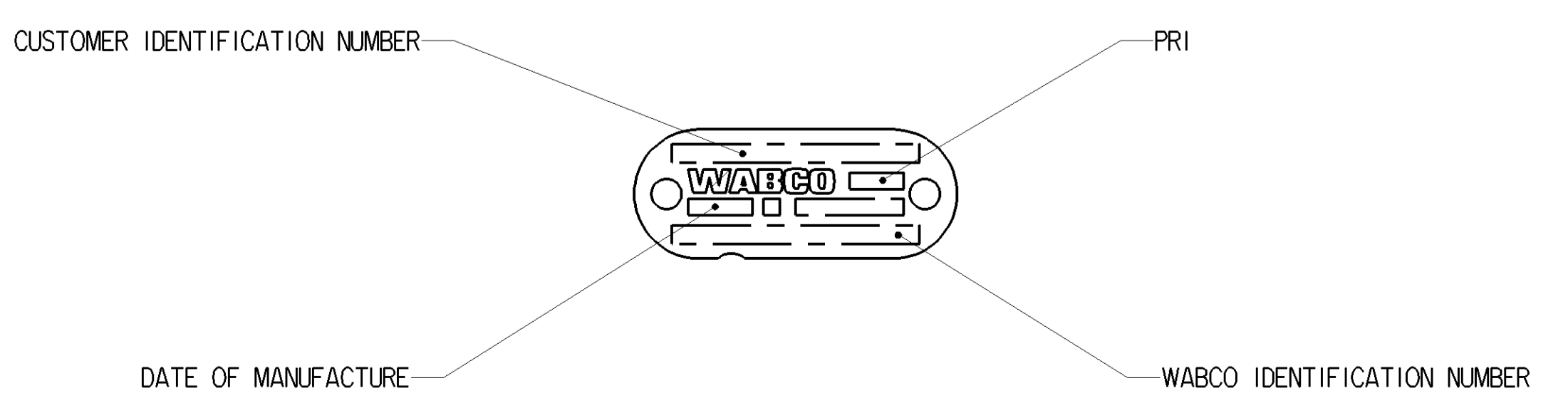
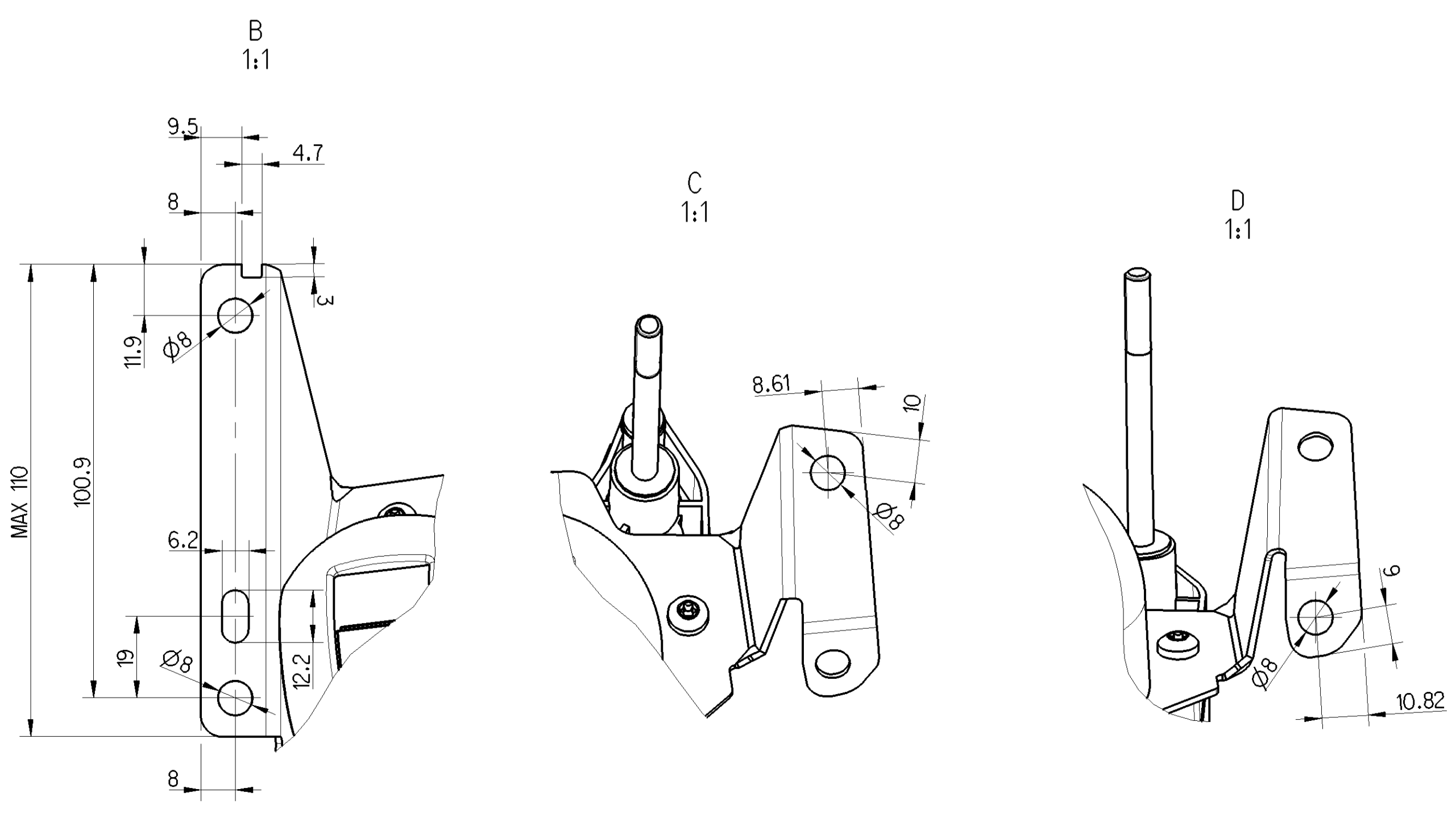
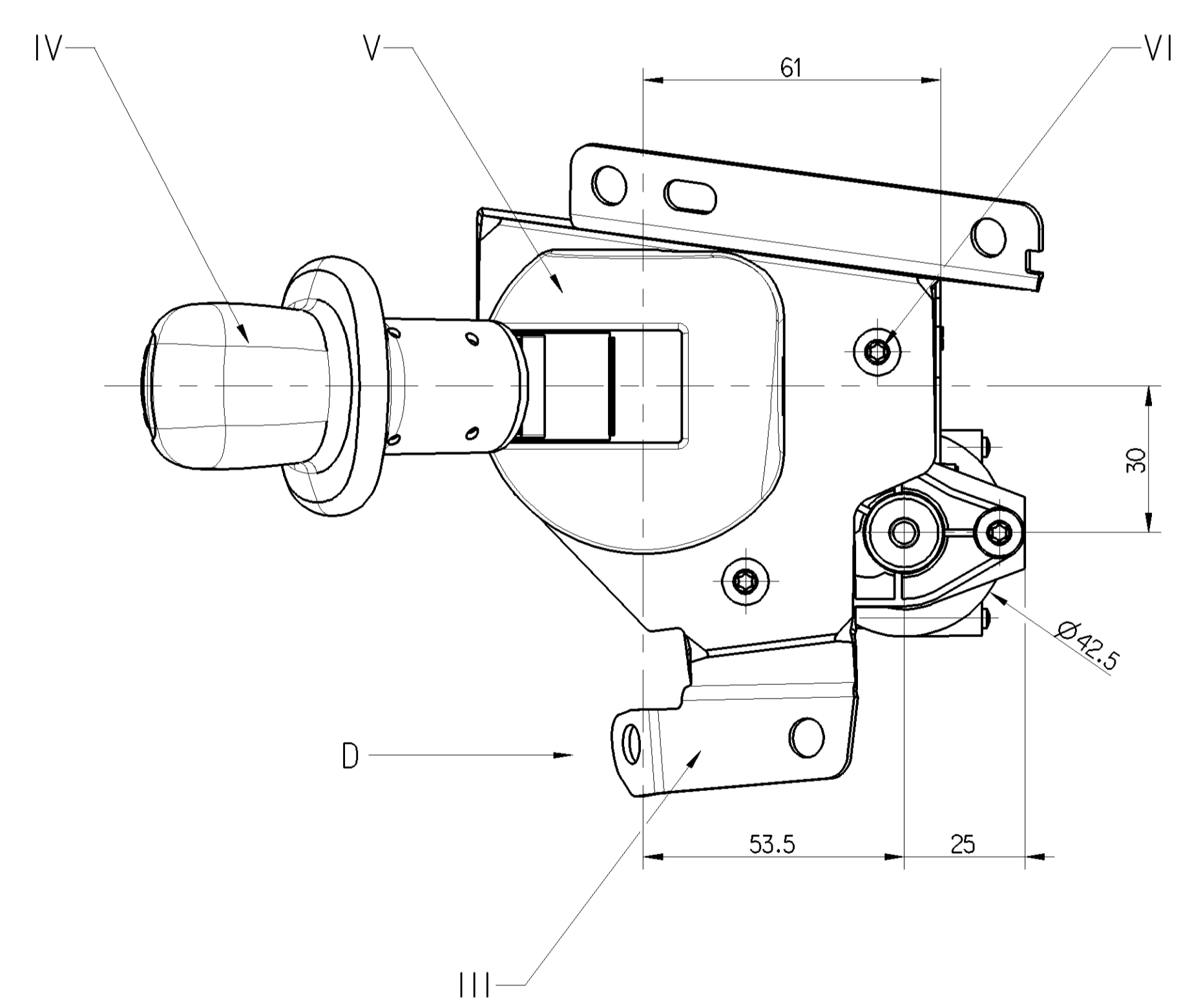
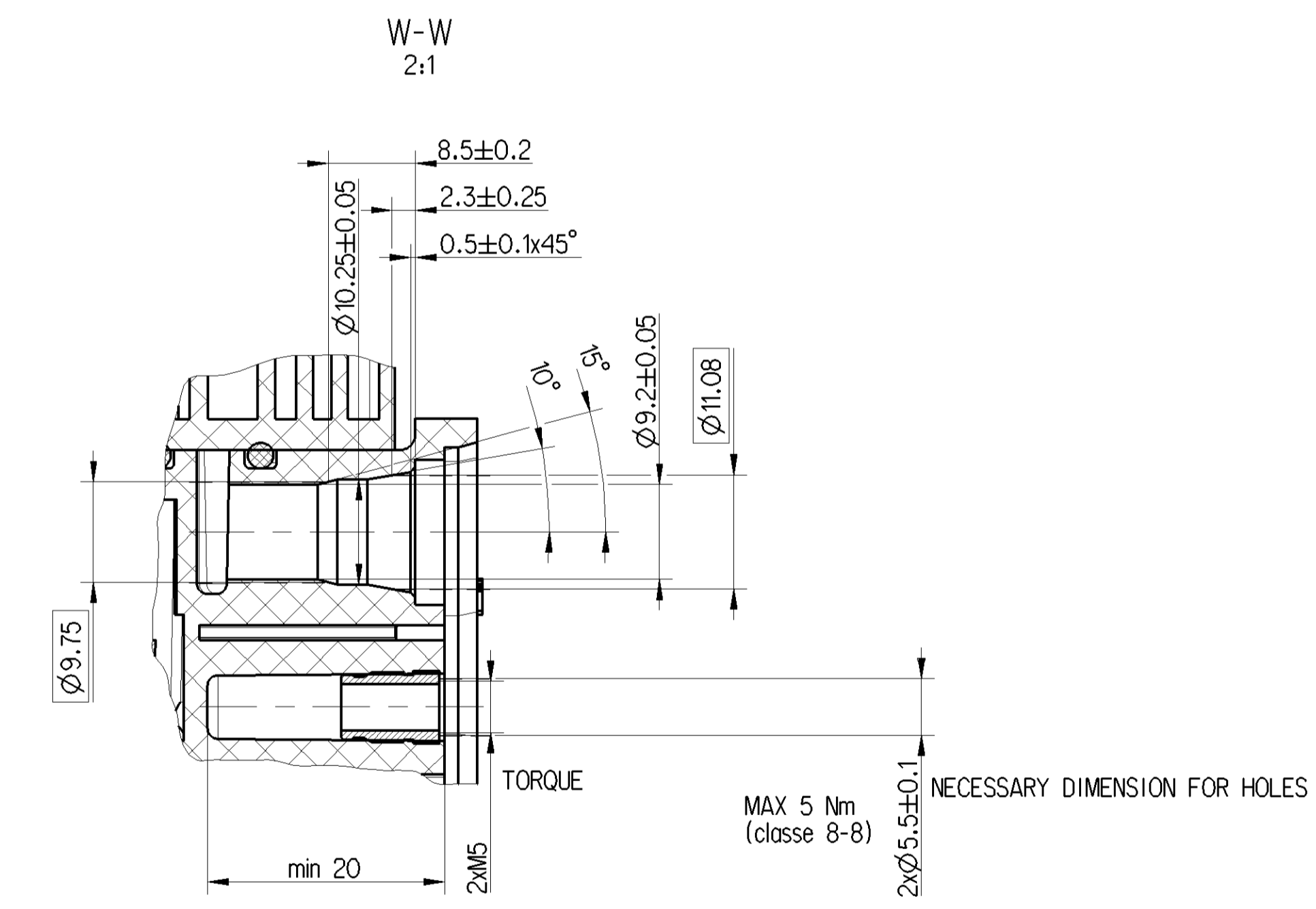
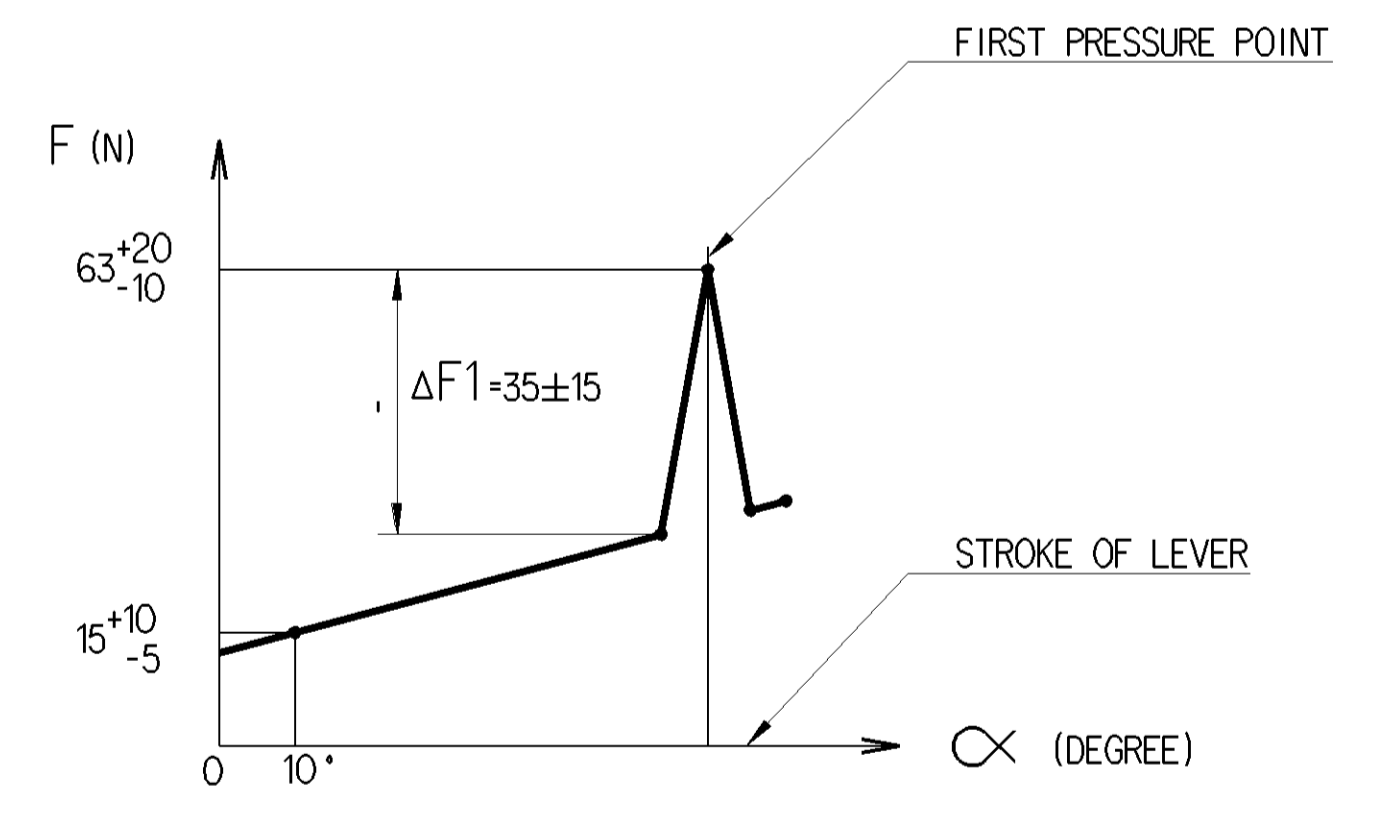
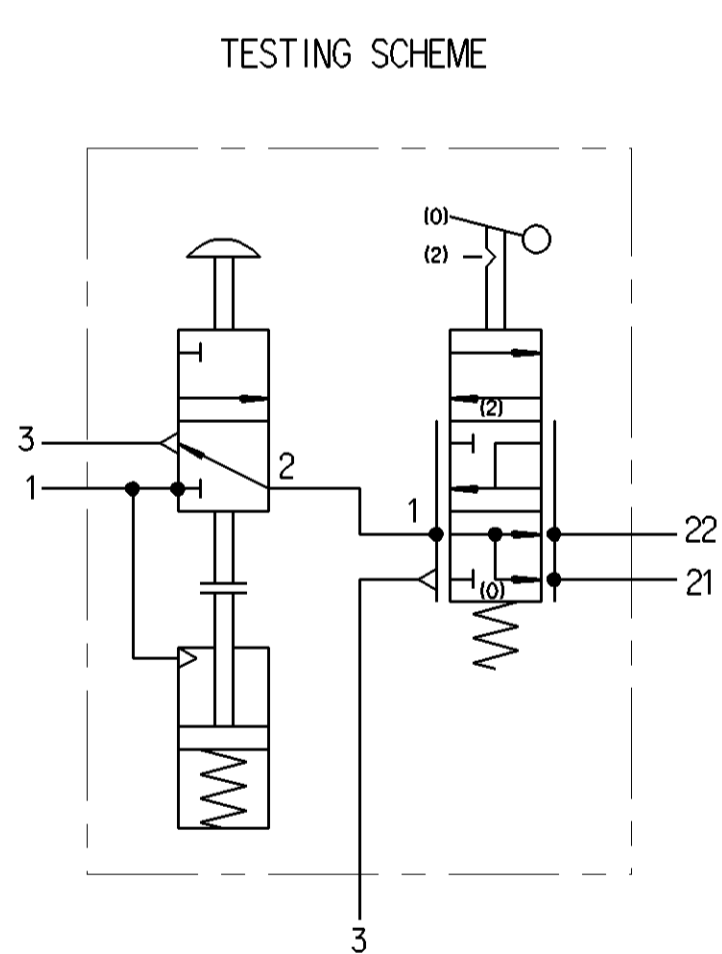
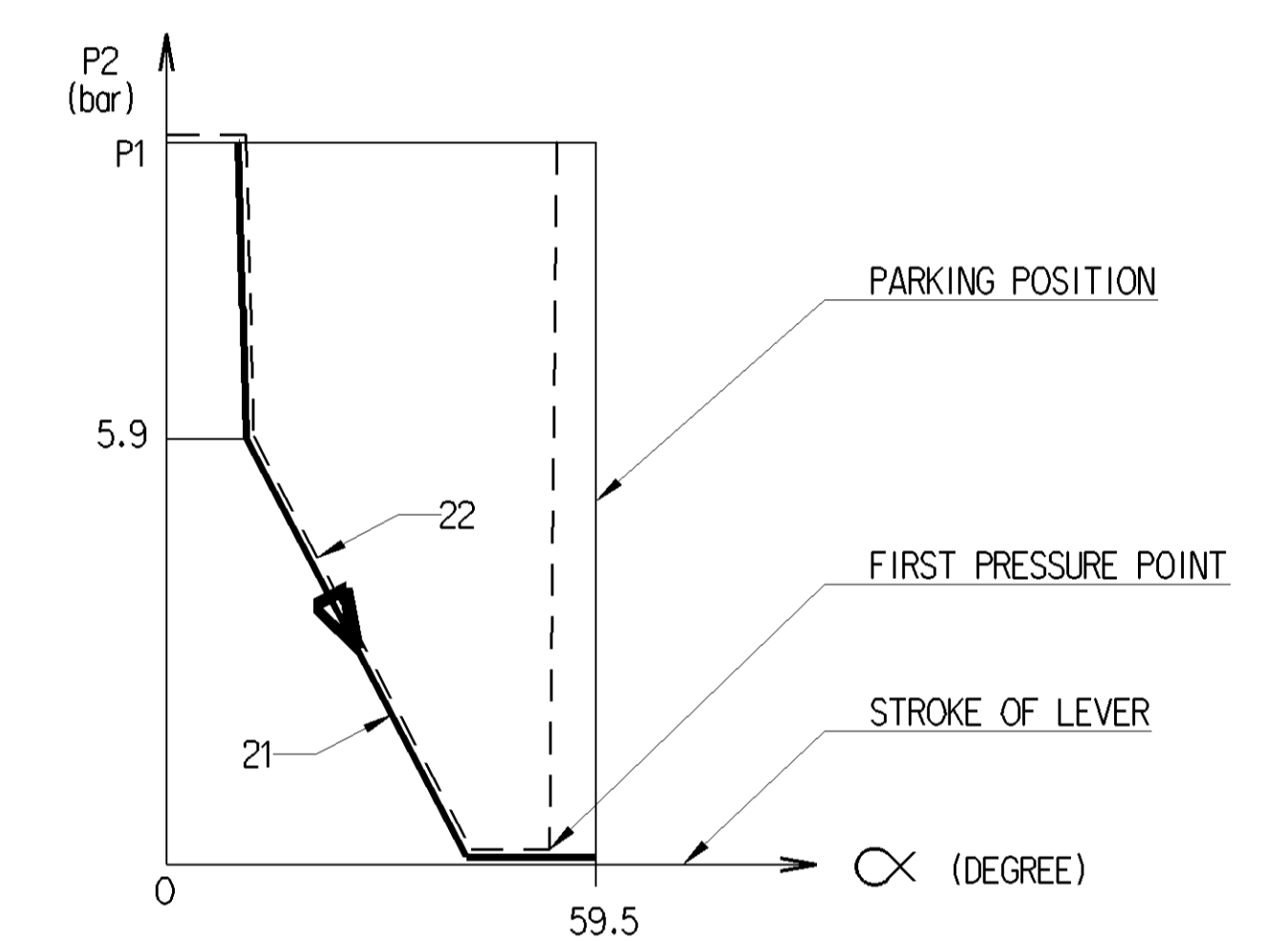
	MATERIAL	SURFACE PROTECTION
I	JED-775-6 PPA, reinforced	
II	GRIVORY HTV5H	
III	DD11 svl EN 10111 ep. 1. 5	CATAPHORESE NOIRE 400h BS
IV	DELIRIN 107 ou 577 BK	
V	JED-465-2 ABS	
VI	JED-051M4 Carbon Steel	JED-378-2 Inorganic coating Zn/Al

THERMAL RANGE OF APPLICATION	-40 °C... +80 °C
SUPPLY PRESSURE	P1=8.5 bar
PROTECTION CLASS ACC. TO	
MEDIUM	AIR

3/2 DIRECTIONAL CONTROL VALVE	
FORCE OUTPUT	F2=80 N MAX (8.5 bar)
CHANGE-OVER AT PRESSURE DROP BELOW 4 ± 0.6 bar	
LINE "1" CLOSED LINE "2" EXHAUSTED	
IF THE RESERVOIR PRESSURE IS HIGHER THAN 4 bar OPERATING CONDITION MAY BE RESTORED BY PUSHING THE KNOB	



DELIVERED PRESSURE DIAGRAM



General Specifications	JED-534-1, Size ISO 14400 LP	Copyright WABCO®	
Further Technical Data		Drawn	Systera
Doc. Code	Sheet 1 of 1	2017-11-16	Kukowski
General Tolerances (ISO 2768)		2017-12-01	Lischwan
Class	± 0.15	± 0.30	± 0.60
Free	0.5	1.0	1.5
Medium	1.0	2.0	3.0
Course	2.0	3.5	5.0
Tapered Holes acc.			
Material No.	961 724 224 0	Date of 1st issue	2016-07
Doc. Code	005	Language	EN
Scale	1/1	Revision	
Author	A 0	Checked	CFEO
Drawn	173536	2x	B
Approved			