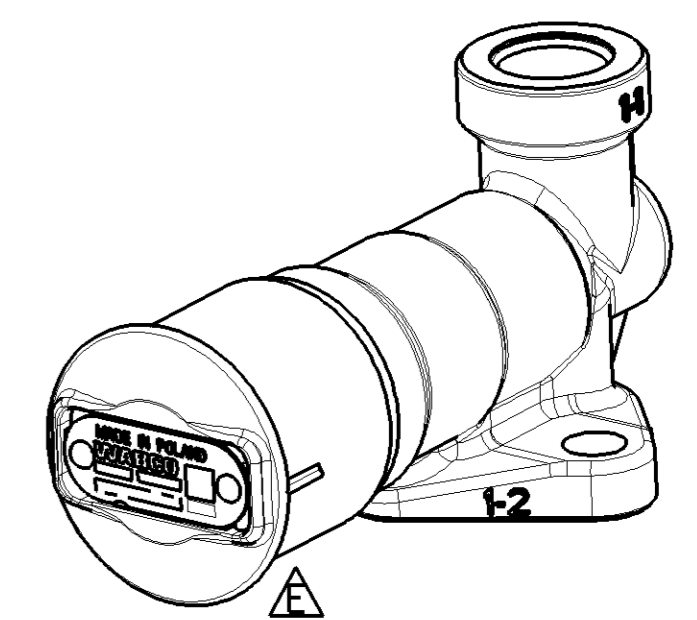
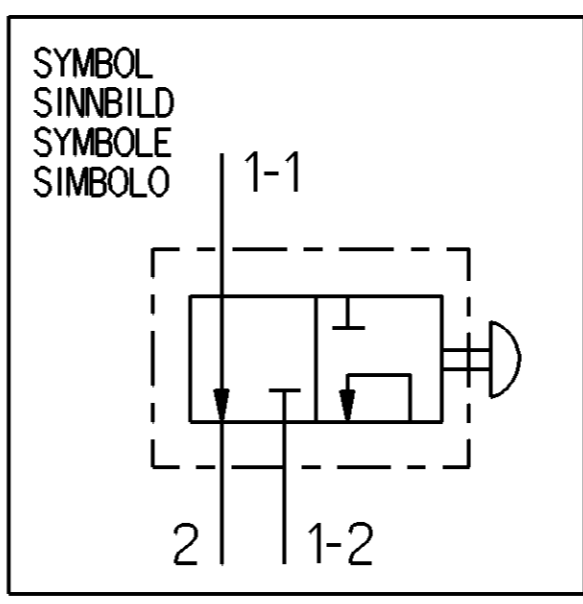
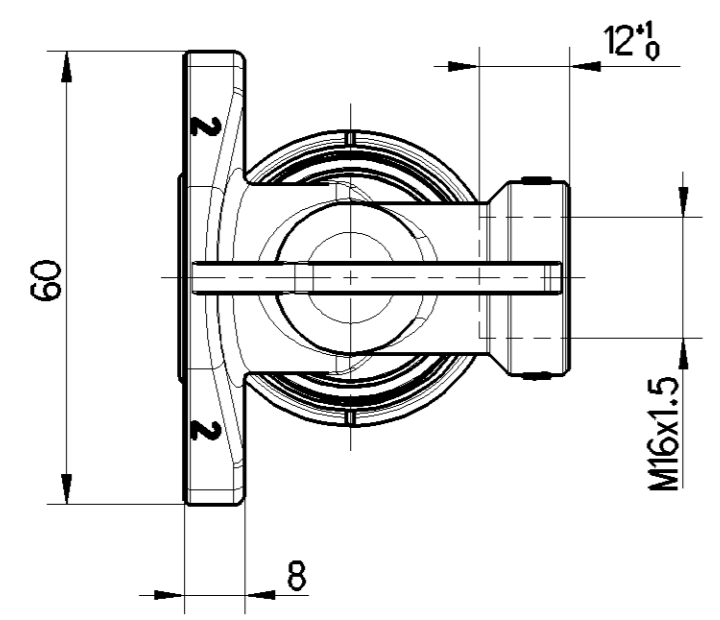
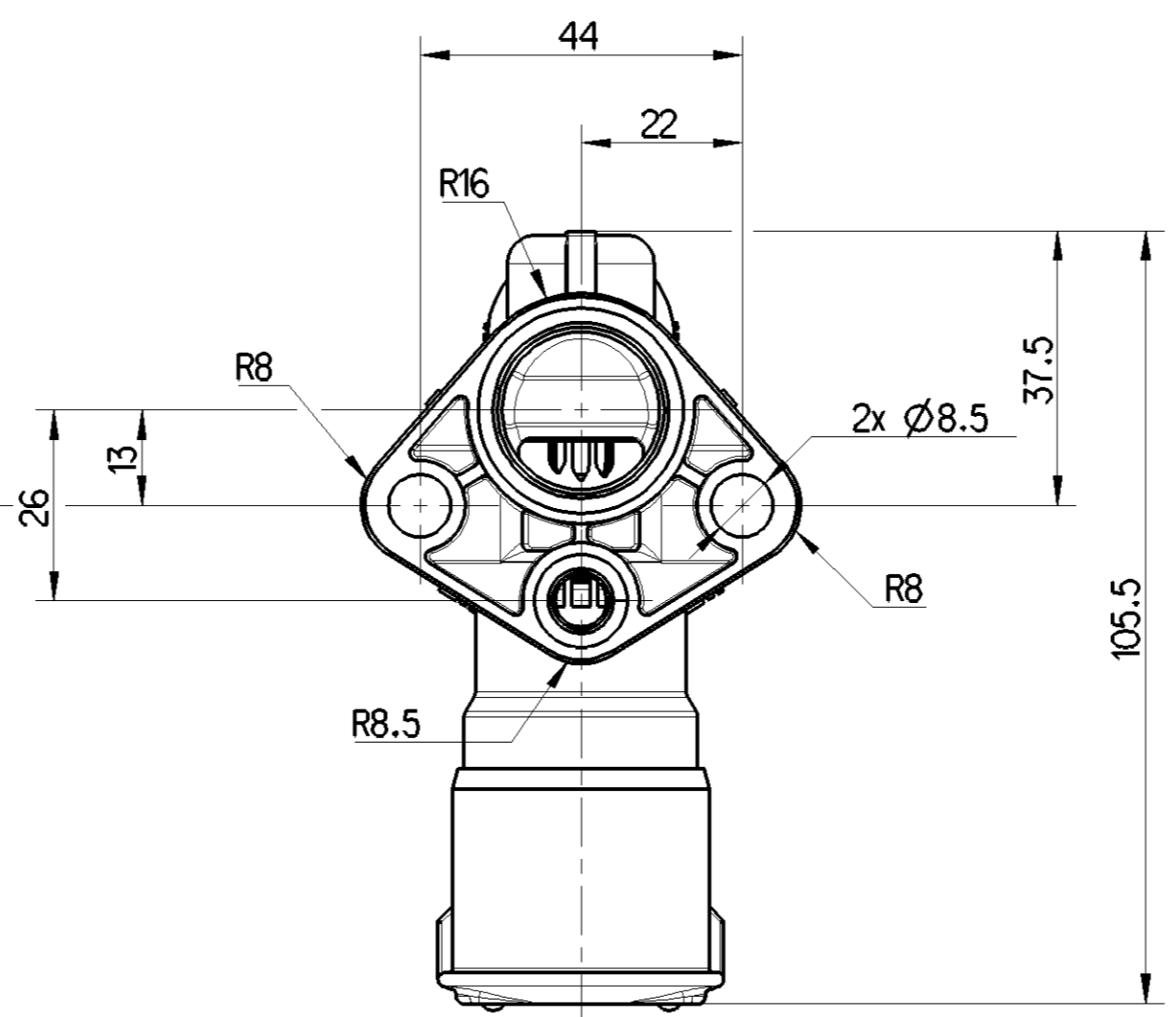
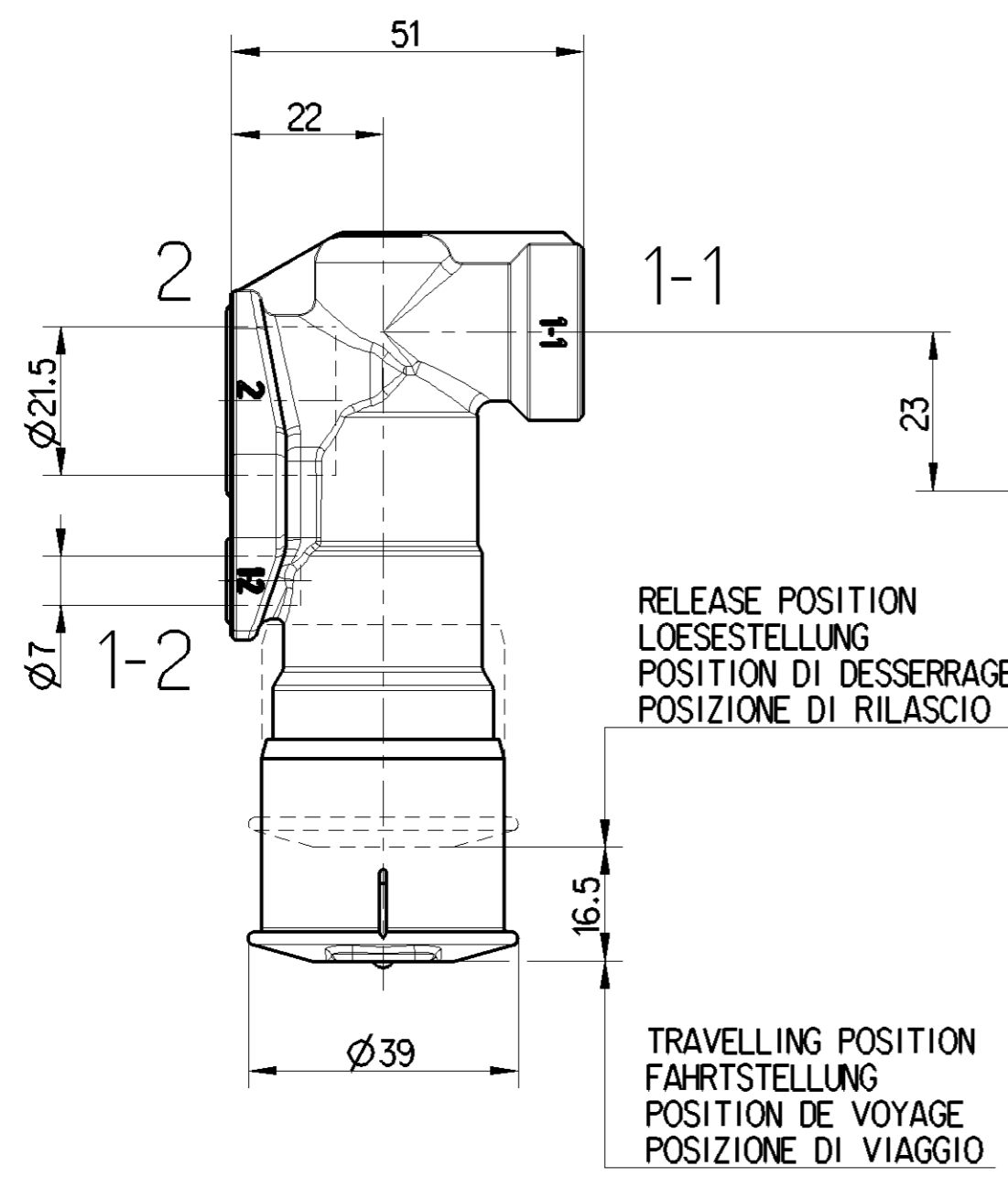


Non e permesso copiare, o terzi o riprodurre questo documento, ne utilizzare il contenuto o renderlo comunque noto o terzi senza autorizzazione esplicita. Ogni infrazione costituisce un evidente abuso e comportera il risarcimento dei danni subiti. E' fatta riserva di tutti i diritti derivanti da brevetti o modelli.  
 Copying of this document and giving it to others and the use or communication of the contents thereof, are forbidden without express authority. Contravention of this restriction will constitute an evident abuse and result in a liability to the payment of damages. All rights are reserved in the event of the grant of patent or registration of a utility model or design. This document is the subject of copyright.  
 Toute communication ou reproduction de ce document, toute exploitation ou communication de son contenu sont interdites, sauf autorisation expresse. Tout manquement a cette regle constitue un abus evident et expose son auteur au versement de dommages et interets. Tous droits de propriete industrielle reserves, notamment en matiere de brevets et de modesles.  
 Weitergabe sowie Vervielfaltigung dieser Unterlagen, Verwertung und Mitteilung ihres Inhalts nicht gestattet, soweit nicht ausdrücklich angedeutet. Zuwiderhandlungen stellen einen offensichtlichen Missbrauch dar und verpflichten zu Schadensersatz. Alle Rechte fuer den Fall der Patenterteilung oder Gebrauchsmuster-Eintragung vorbehalten.

<C> CUSTOMER INTERFACE 0



MAX. WORKING PRESSURE MAX. BETRIEBSDRUECK PRESSION D'UTILISATION MAX. PRESSIONE DI ESERCIZIO MAX.		8.5 bar	
THERMAL RANGE OF APPLICATION THERMISCHER ANWENDBEREICH GAMME D'APPLICATION THERMIQUE CAMPO DI APPLICAZIONE TERMICA		-40°...+80°C	
TORQUE FOR CONNECTIONS ANZUGSMOMENT FÜR EINSCHRAUBSZUTZEN COUPLE DE SERRAGE DES RACCORDS COPPIA DI SERRAGGI DEI RACCORDIO		34 Nm MAX.	
1-1	SUPPLY VORRAT ALIMENTATION ALIMENTAZIONE	2	SPRING BRAKE CYLINDER FEDERSPEICHERZYLINDER CYLINDRE A RESSORT CILINDRO A MOLLA
1-2	AIR RESERVOIR LUFTBEHALTER RESERVOIR D'AIR SERBATOIO D'ARIA	MEDIUM ; MEDIUM ; FLUIDE ; FLUIDO ;	AIR LUFT AIR ARIA
WORKING POSITION: UNIMPORTANT EXCEPT EXHAUST AT THE TOP EINBAULAGE: BELIEBIG AUSGENOMMEN ENTLUEFTUNG NACH OBEN POSITION DE FONCTIONNEMENT: INDIFFERENTE SAUF ECHAPPEMENT VERS LE HAUT POSIZIONE DI FUNZIONAMENTO: INDIFFERENTE ECCETTO SCARICO VERSO L'ALTO			

General Specification: ISO 8015, JED-334-1, Size ISO 14405 LP		Copyright WABCO®		<b>WABCO</b>	
Further Technical Data:		Date	Signature	TRAILER RELEASE VALVE ANHAENGER LOESEVENTIL VALVE DE DESSERRAGE DE REMORQUE VALVOLA DI SFRENTATURA RIMORCHIO	
Doc. Code:	Sheet: To	2023-05-17	Balago	Date of first issue: 1982-11-02	
General Tolerances JED-261		Checked	Szysko	Doc.Code	Language
Range of nominal dimensions in mm		Dimensions in mm		005	ML
Class 1)	≤ 50 > 50 ≤ 180 > 180 ≤ 400 > 400	Mass	Scale	963 001 012 0	Sheet
Fine	±0.5 ±1 ±1.5 ±2	0.123	1:1	005	1/1
Medium	±1 ±2 ±3 ±4	kg			
Coarse	±2 ±3.5 ±5 ±6.5	Size	CAD System		
Tapped Holes acc. JED-152		A 2	CREO	ECN-No.	Revision
1) Tolerance Class Applied Crossmarked				513198	3 x E
				Techn. Resp.	5320
				Replacement for	