

DEVICE EXTREM POSITIONS WHEN BLEEDING
 MAXIMALE ABWEICHUNGEN DES GERÄTES WÄHREND DER ENTLUEFTUNG
 POSITIONS EXTREMES DU SERVO PENDANT LA PURGE
 POSIZIONI ESTREME DEL SERVO FRIZIONE DURANTE LO SPURGO

MISALIGNMENT OF PUSH ROD IN ANY DIRECTION
 AUSLENKUNG DER DRUCKSTANGE ALLSEITIG
 DÉBATEMENT DE LA TIGE EN TOUTES DIRECTIONS
 DEVIAZIONE DELL'ASTA DI COMANDO IN TUTTE LE DIREZIONI

WIDTH BETWEEN FLATS
 SCHLUESSELWEITE
 SUR PLATS
 SPAZIO TRA I PIATTI
 TORQUE
 ANZUGSMOMENT
 COUPLE DE SERRAGE
 COPPIA DI SERRAGGIO

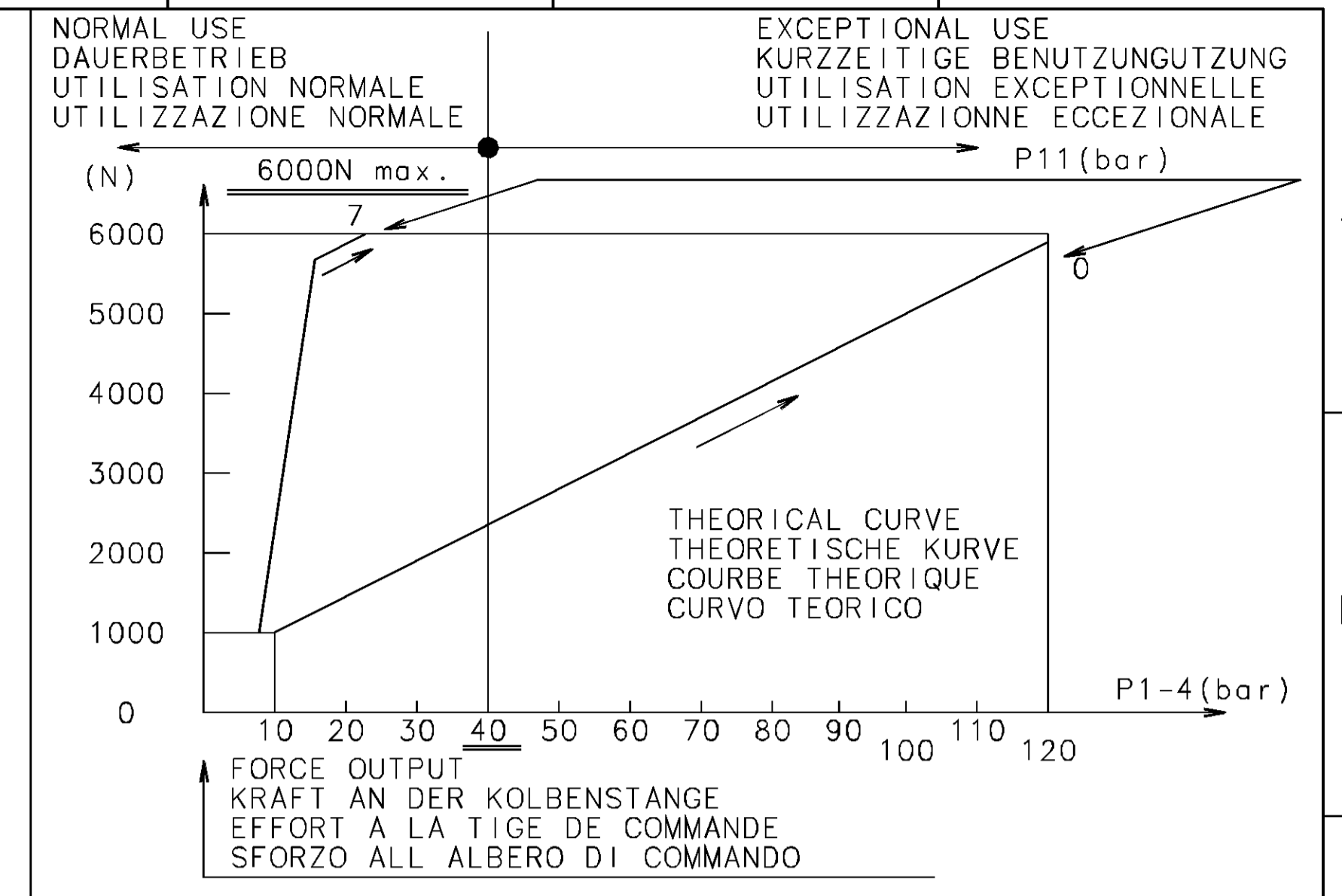
SPHERICAL
 KUGELFOERMIG
 SPHERIQUE
 SFERICO

PERMITTED SHAPES
 ZULAESSIGE FORMEN
 FORMES ADMISES
 FORME AMMESSE

POSITION TO NOTE (CLUTH IN NEW CONDITION)
 AUF STELLUNG ACHTEN (KUPPLUNG IN NEUEM ZUSTAND)
 POSITION A RESPECTER (EMBRAYAGE ETAT NEUF)
 POSIZIONE DA RISPETTARE (FRIZIONE NUOVA)

VIEW
 ANSICHT
 VUE
 VISTA

Before re-fit valve adjustment must be made
 Bei Kupplungsarbeiten Einstellarbeiten vorzunehmen
 Before re-fit valve adjustment must be made
 Before re-fit valve adjustment must be made



DO NOT ACTUATE THE DEVICE IF NOT FITTED ON ITS MOUNTING BRACKET
 GERÄT DARF NUR IM EINGEBAUTEN ZUSTAND BETÄTIGT WERDEN
 NE PAS ACTIONNER L'APPAREIL S'IL N'EST PAS FIXE SUR SON SUPPORT
 NON METTERE IN FUNZIONE L'APPARECCHIO SE NON È FISSATO AL SUPPORTO

MARKING OF PORTS
 KENNZEICHNUNG DER ANSCHLUESSE
 MARQUAGE DES ORIFICES
 MARCATURA DEGLI ORIFIZI

11	AIR INLET VORRATSLEITUNG ALIMENTATION AIR ALIMENTAZIONE ARIA	12	AIR INLET VORRATSLEITUNG ALIMENTATION AIR ALIMENTAZIONE ARIA
1-4	HYDRAULIC INLET HYDRAULISCHE ZUFLUSS ALIMENTATION HYDRAULIQUE ALIMENTAZIONE HYDRAULICO	22	DELIVERY AUSGESTEUERTE LUFT UTILISATION UTILIZZAZIONE
31	AIR EXHAUST ENTLUEFTUNG ECHAPPEMENT SCARICO	33	AIR EXHAUST ENTLUEFTUNG ECHAPPEMENT SCARICO
32	BLEED SCREW ENTLUEFTUNGSSCHRAUBE VIS DE PURGE VITE DI SPURGO	1 2 AND 2 2 To be connected with flexible pipes 1 2 und 2 2 Durch schauche verbunden 1 2 et 2 2 A raccorder avec tuyaux souples 1 2 e 2 2 Raccordamento con tube flessibile	
21	PRESSURE CONNECTION DRUCK ANSCHLUSS PRISE DE PRESSION PRESA DI PRESSIONE	port for secondary devices anschluss fuer sekundaergeraete orifice pour appareils secondaires orifizio per apparecchi secondari	

AIR PRESSURE INLET
 DRUCKLUFT
 PRESSION PNEUMATIQUE D'ALIMENTATION
 PRESSIONE PNEUMATICA DI ALIMENTAZIONE 10 BAR MAX

NO STROKE LIMITER IN THE DEVICE
 HUBBEGRENZUNG NICHT IMGERÄET
 PAS DE LIMITATION DE COURSE DANS L'APPAREIL
 NESSUNA LIMITAZIONE DI CORSA NELL'APPARECCHIO

HYDRAULIC FLUID
 HYDR. FLÜSSIGKEIT
 FLUIDE HYDRAULIQUE
 FLUIDO IDRAULICO

BRAKE FLUIDE
 BREMSFLÜSSIGKEIT
 GLYCERO ALCOOLIQUE
 LIQUIDO PER FRENI

SAE J 1703

THERMAL RANGE
 THERM ANWENDUNGSBEREICH
 TEMPERATURE D'UTILISATION
 TEMPERATURA DI UTILIZZAZIONE

-40°C...+100°C

V	HYDRAULIC VOLUME INPUT NUTZBARES HYDRAULISCHES VOLUM VOLUME HYDRAULIQUE ABSORBE VOLUME HYDRAULICO ASSORBITO	$V = (Sh \times C) + K$
K	ABSORPTION AT 120 BAR AUFNAHME BEI 120 BAR ABSORPTION A ASSORBIMENTO A	FOR FUR C=0 POUR POUR PER PER $1.5 \leq K \leq 2.5$ cm ³
SH	HYDRAULIC SECTIONAL AREA HYDRAULISCHER QUERSCHNITT SECTION HYDRAULIQUE SEZIONE IDRAULICO	4.89 cm ²

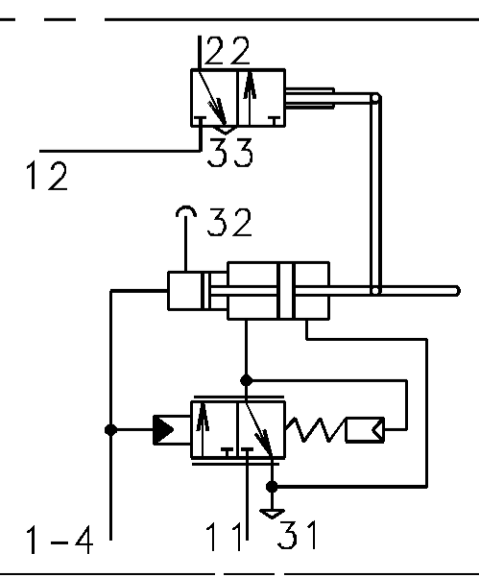
OPENING OF THE VALVE
 VENTILEROEFFNUNG
 OUVERTURE DE LA VALVE
 APERTURA DELLA VALVOLA

GEAR DISENGAGING STROKE
 AUSKUPPLUNGSHUB
 COURSE DE DEBRAYAGE
 CORSA DI DISINNESTO

SYMBOL
 SYMBOL
 SYMBOLE
 SIMBOLO

TORQUE
 ANZUGSMOMENT
 COUPLE DE SERRAGE MAX
 COPPIA DI SERRAGGIO

*	21 N.m
**	25 N.m
***	34 N.m



FURTHER TECHNICAL DATA SEE

IDENTIFICATION NO.:
 CODE FOR DOCUMENT: 605 SHEET: TO

GENERAL TOLERANCES

CLASS	RANGE OF NOMINAL DIMENSIONS (± mm)			
	≤50	>50 ≤180	>180 ≤400	>400
I	±0.5	±1.0	±1.5	±2.0
II	±1.0	±2.0	±3.0	±4.0
III	±2.0	±3.5	±5.0	±6.5

TAPPED HOLES ACC. ISO 4039 / JED-152

1) TOLERANCE CLASS APPLIED CROSSMARKED

WABCO

COPYRIGHT
 DATE: 90-12-19
 SIGNATURE: PRESIDICO
 DRAWN: 90-12-20
 CHECKED: GUILLON
 STANDARDIZATION: 90-12-21
 90165

CLUTCH-SERVO
 KUPPLUNG-VERSTÄRKER
 SERVO-DEBRAYAGE
 SERVO-FRIZIONE

MASS SCALE
 3.2 kg 1:1

PRODUCT IDENTIFICATION NO.
 970 051 214 0

CODE FOR DOCUMENT SHEET
 605 1/1

REPLACEMENT FOR
 884 606 109 0

EXPERT CODE TYPE OF PRODUCT