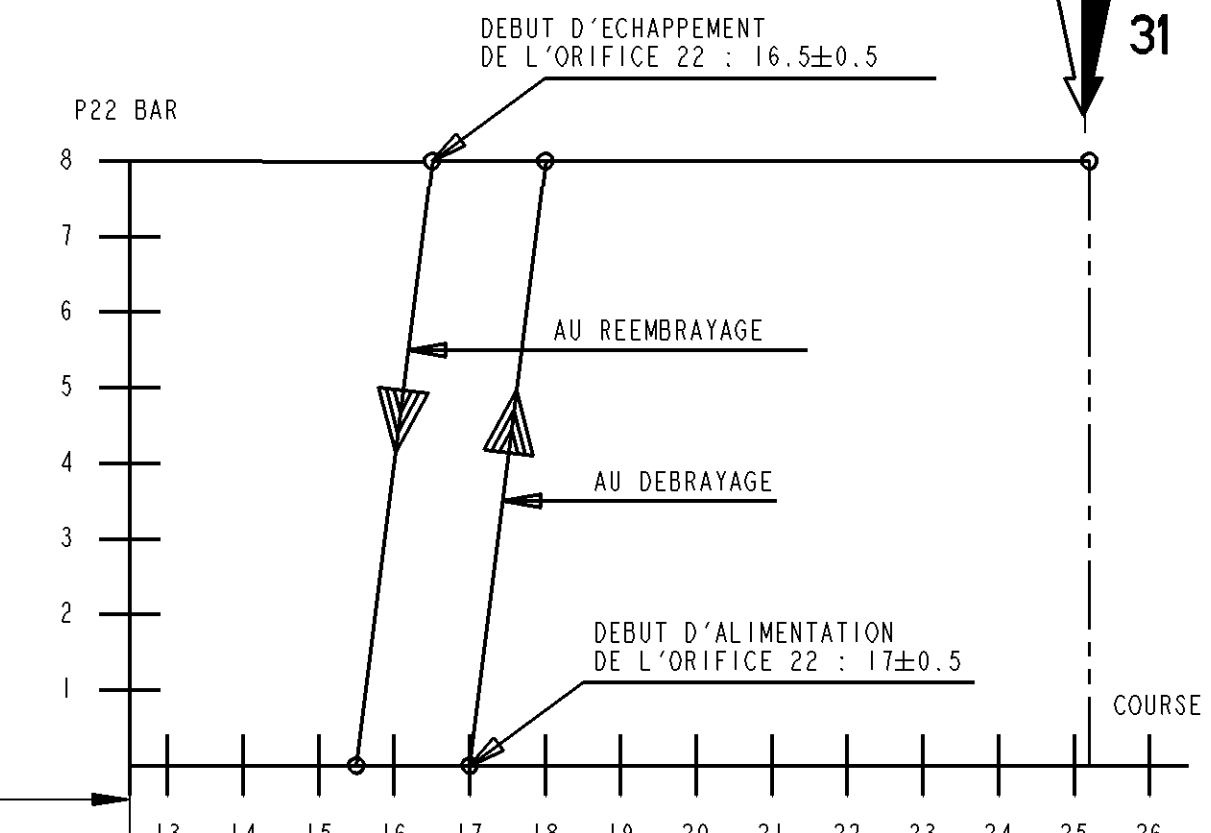
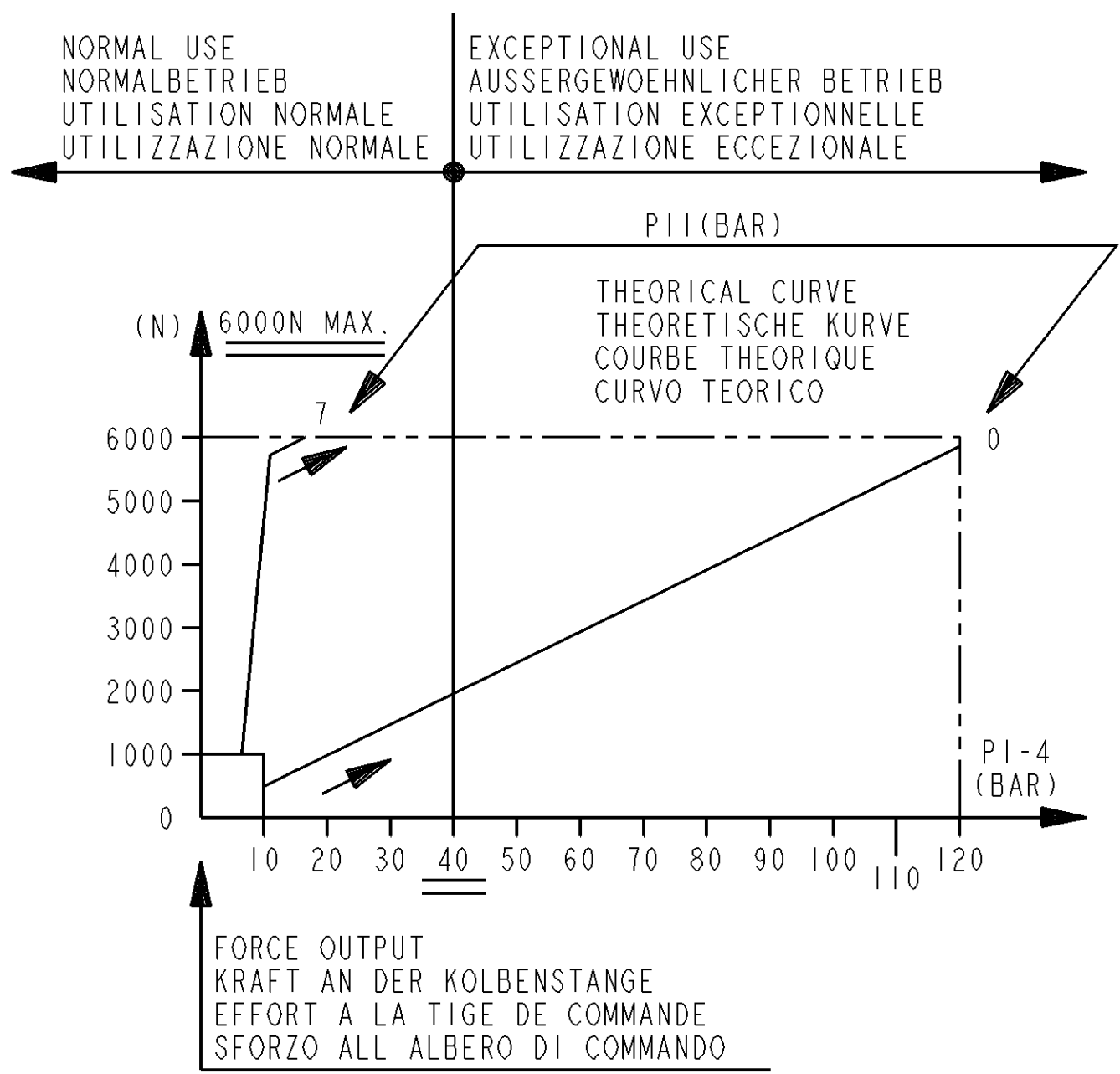
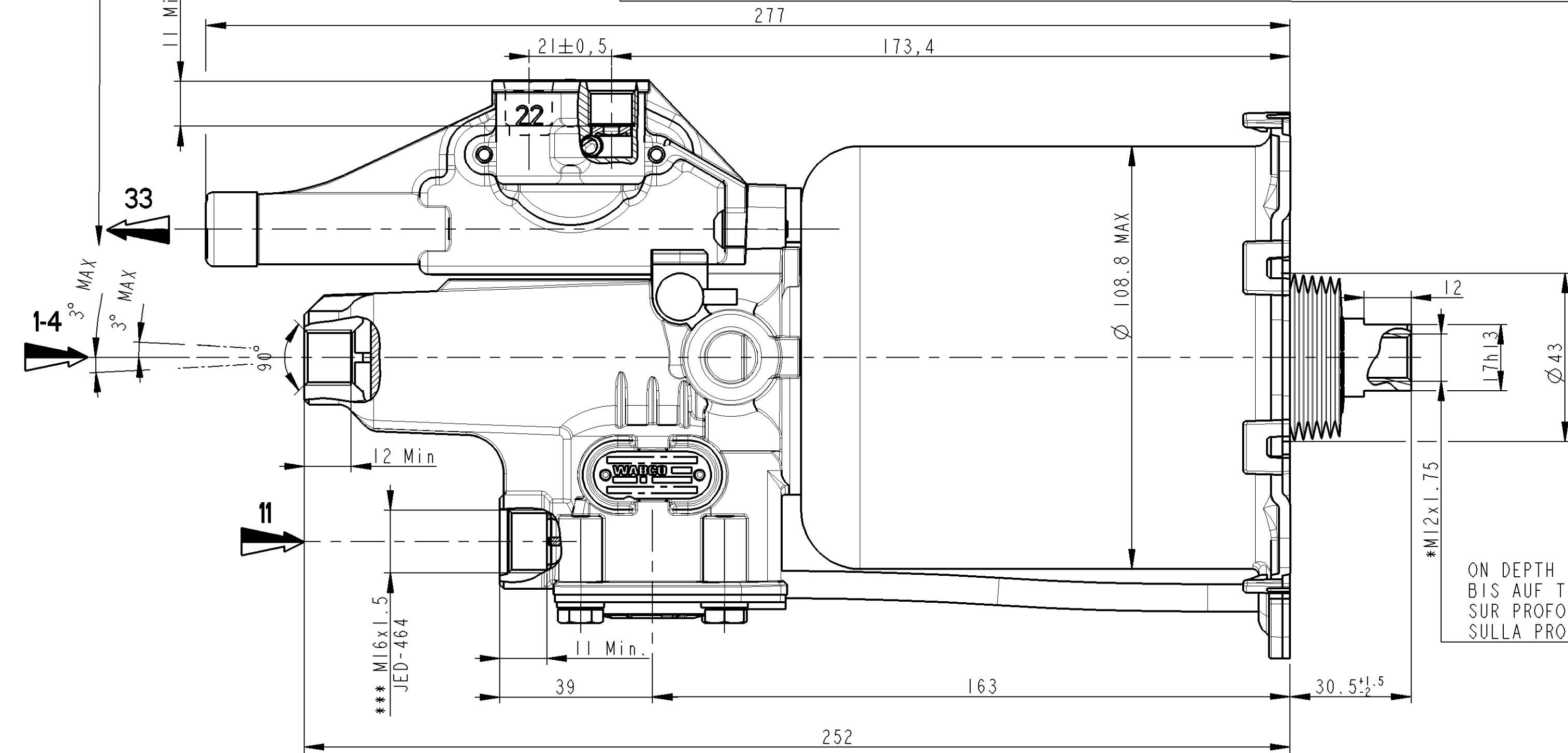
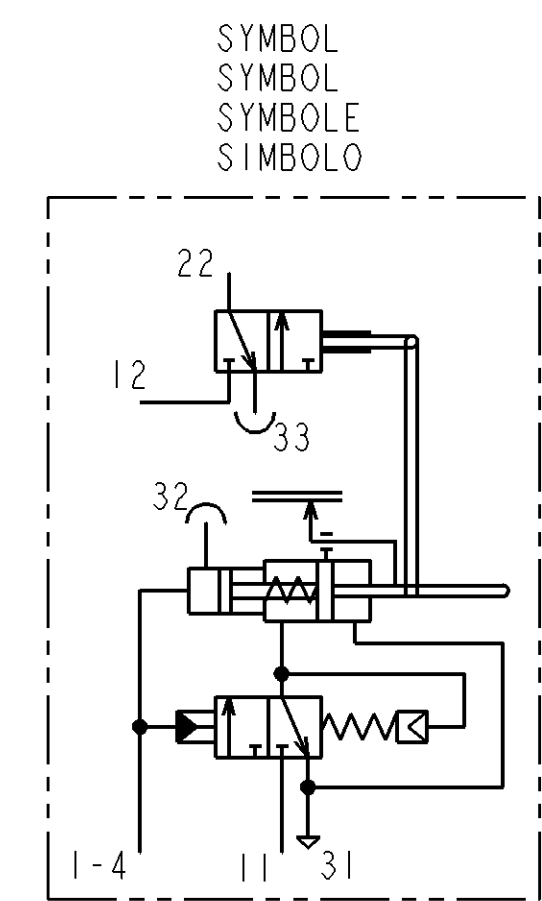
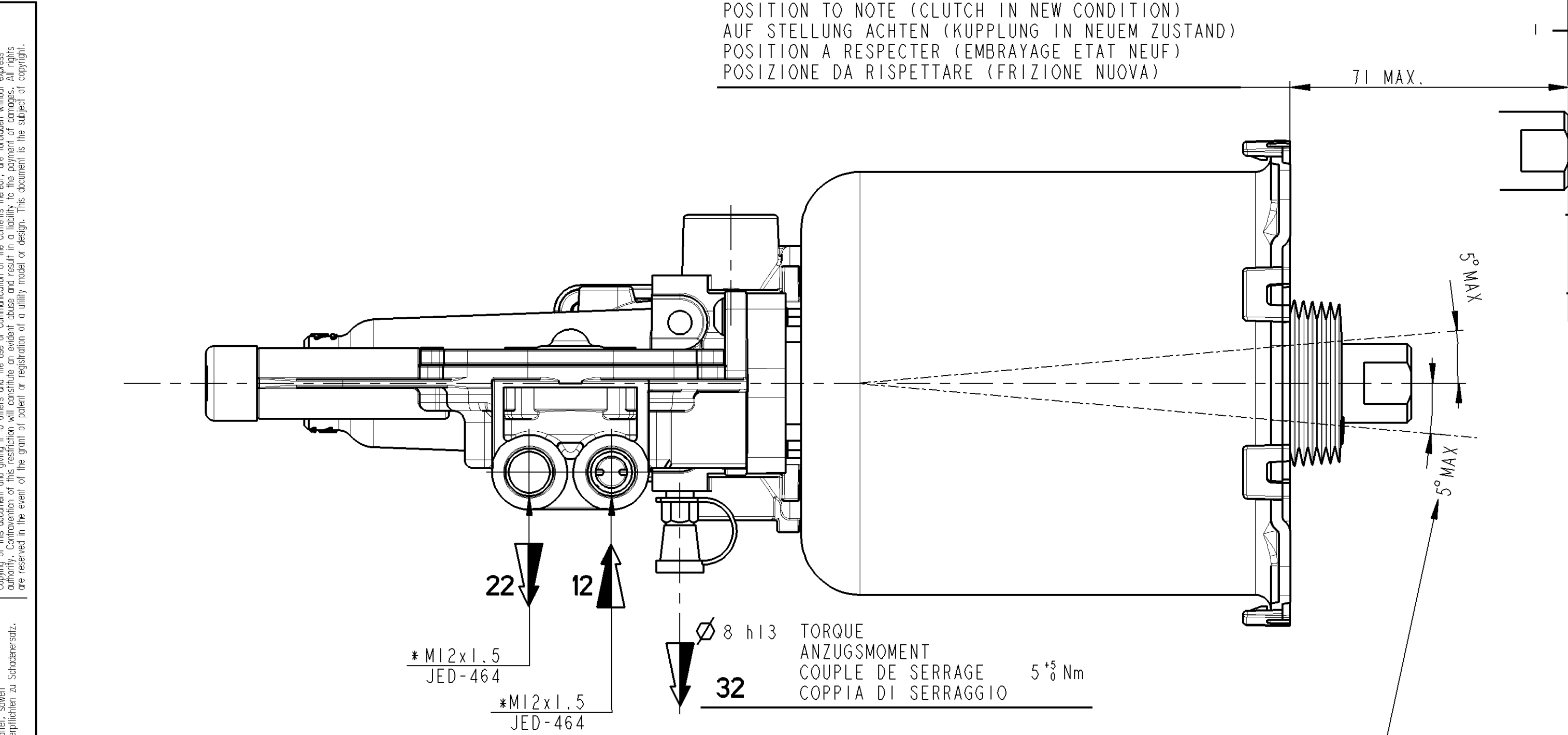


DEVICE EXTREME POSITIONS WHEN BLEEDING  
 MAX. SCHIEFSTAND DES GERAETES WAERHEND DER ENTLUEFTUNG  
 POSITIONS EXTREMES DE L'APPAREIL PENDANT LA PURGE  
 POSIZIONI ESTREME DELL'APPARECCHIO DURANTE LO SPURGO



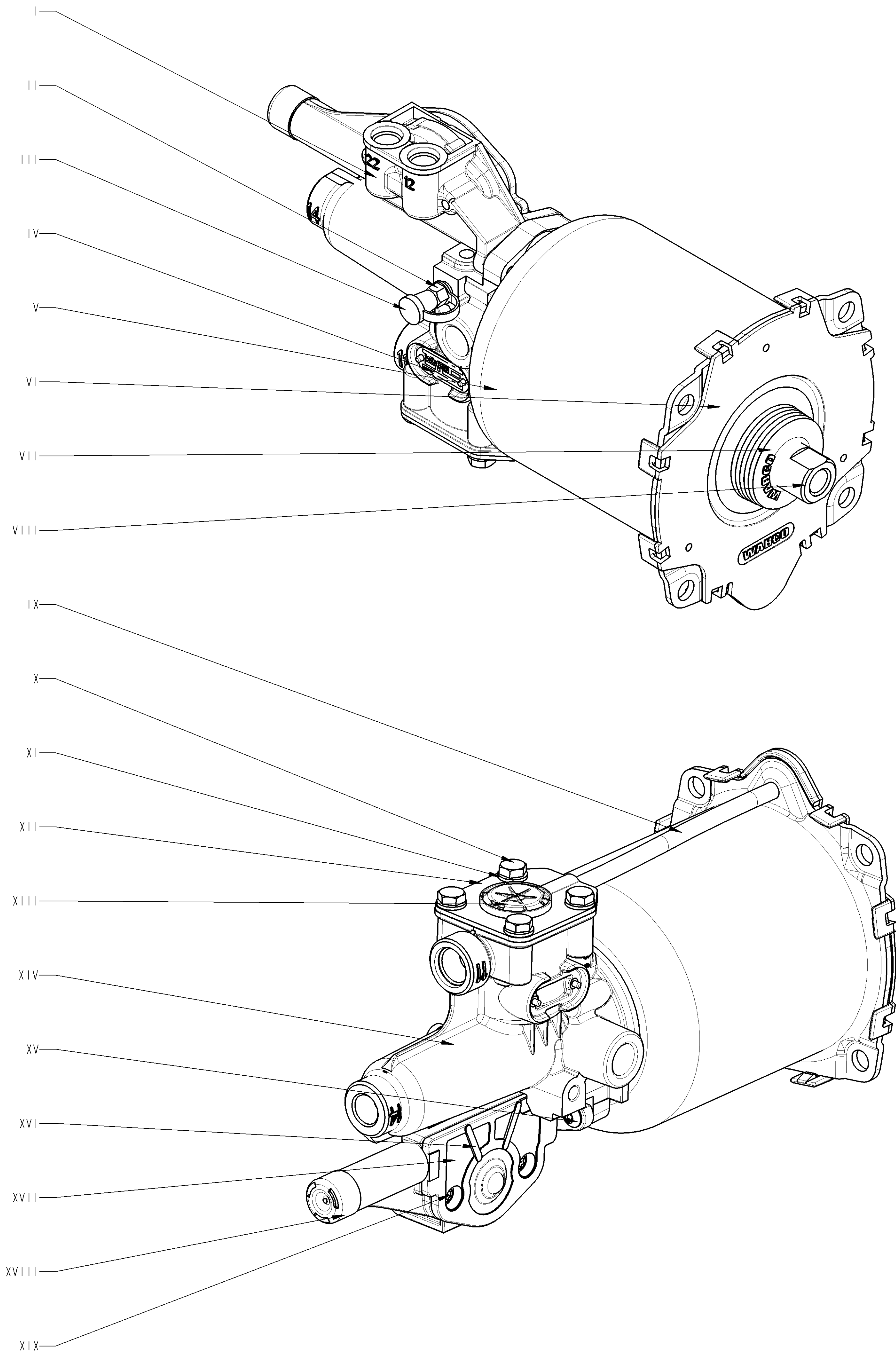
OIL VOLUME INPUT NUTZBARES HYDRAULISCHES VOLUMEN VOLUME D'HUILE ABSORBE VOLUME D'OLIO ASSORBITO		V=(SHxC)+K	
K	ABSORPTION AT AUFNAHME BEI ABSORPTION A ASSORBIMENTO A	FOR FUER POUR PER	C=0 K<1.5 cm³
SH	HYDRAULIC SECTIONAL AREA HYDRAULISCHER QUERSCHNITT SECTION HYDRAULIQUE SEZIONE IDRAULICO		4.89 cm²
C	GEAR DISENGAGING STROKE AUSKUPPLUNGSHUB COURSE DE DEBRAYAGE CORSA DI DISINNESTO		
HYDRAULIC FLUID HYDRAULIKFLUESSIGKEIT FLUIDE HYDRAULIQUE FLUIDO IDRAULICO		BRAKE FLUID BREMSFLUESSIGKEIT GLYCERO ALCOOLIQUE LIQUIDO PER FRENI	SAE J 1703
THERMAL RANGE THERMISCHER ANWENDUNGSBEREICH TEMPERATURE D'UTILISATION TEMPERATURA DI UTILIZZAZIONE			- 30°C...+100°C
SUPPLY PRESSURE VORRATSDRUCK PRESSION PNEUMATIQUE D'ALIMENTATION PRESSIONE PNEUMATICA DI ALIMENTAZIONE			10 BAR MAX
NO STROKE LIMITER IN THE DEVICE KEIN HUBBEGRENZUNG IM GERAET PAS DE LIMITATION DE COURSE DANS L'APPAREIL NESSUNA LIMITAZIONE DI CORSA NELL'APPARECCHIO			

CAUTION : DO NOT ACTUATE THE DEVICE IF NOT FITTED ON ITS MOUNTING BRACKET  
 VORSICHT : GERAET DARF NUR IM EINGEBAUTEN ZUSTAND BETAEETIGT WERDEN  
 ATTENTION : NE PAS ACTIONNER L'APPAREIL S'IL N'EST PAS FIXE SUR SON SUPPORT  
 ATTENZIONE: NON METTERE IN FUNZIONE L'APPARECCHIO SE NON E' FISSATO AL SUPPORTO



MARKING OF PORTS KENNZEICHNUNG DER ANSCHLUESSE MARQUAGE DES ORIFICES MARCATURA DEGLI ORIFIZI		32	BLEED SCREW ENTLUEFTUNGSSCHRAUBE VIS DE PURGE VITE DI SPURGO	
11	AIR INLET VORRATSLAUFUNG ALIMENTATION AIR ALIMENTAZIONE ARIA	12	AIR INLET VORRATSLAUFUNG ALIMENTATION AIR ALIMENTAZIONE ARIA	12 AND 22 TO BE CONNECTED WITH FLEXIBLE PIPES 12 UND 22 DURCH SCHAUCHE VERBUNDEN 12 ET 22 A RACCORDER AVEC TUYAUX SOUPLES 12 E 22 RACCORDAMENTO CON TUBE FLESSIBILE
1-4	OIL INLET OELZUFLOSS ALIMENTATION HUILE ALIMENTAZIONE OLIO	22	DELIVERY AUSGESTEURTE LUFT UTILISATION UTILIZZAZIONE	PORT FOR SECONDARY DEVICES ANSCHLUSS FUER SEKUNDAERGERAETE ORIFICE POUR APPAREILS SECONDAIRES ORIFIZIO PER APPARECCHI SECONDARI
31	AIR EXHAUST ENTLUEFTUNG ECHAPPEMENT SCARICO	33	AIR EXHAUST ENTLUEFTUNG ECHAPPEMENT SCARICO	TORQUE FOR CONNECTIONS ANZUGSMOMENT FUER ANSCHLUESSE COUPLE DE SERRAGE DES RACCORDS COPPIA DI SERRAGGIO DEI RACCORDI
				* 21 N.m MAX ** 25 N.m MAX *** 34 N.m MAX

General Specifications: JED-334-0		Copyright WABCO®	
Further Technical Data: 970 051 402 0		Date: 2012-08-02	
Doc. Code: 035		Sheet: 1 To 5	
General Tolerances JED-261		2012-08-02	
Range of Nominal Dimensions (± mm)		Checked: Klueck	
Class	1) ≤ 50	> 50	> 180
Fine	0.5	1.0	1.5
Medium	1.0	2.0	3.0
Coarse	2.0	3.5	5.0
			6.5
			±3°
Tapped Holes acc. JED-152 / ISO 4039		Material No.: 970 051 402 0	
1) Tolerance Class Applied Crossmarked		Date of first issue: 2008-09-24	
A 1		Doc. Code: 005	
Pro/E		Language: ML	
151813		Sheet: 1/2	
1x		Revision: 5630	
L		Tech. Resp. 95-03-03	
		Replacement for	
		DRAWING OF 95-03-03	



ITEM REPERE	MATERIAL MATIERE	SURFACE PROTECTION PROTECTION DE SURFACE
I	JED-029MI AL-PRESSURE DIE CASTING	JED-259-1 PASSIVAT. Zn-ALLOY-STEEL
II	JED-020-M STEEL	JED-256-0 PASSIVAT. Zn-ALLOY-STEEL
III	JED-670 TPE, 75 SHORE A, -40°C	JED-240-5 PAINT. STEEL PART
IV	JED-077-1 HIGH-GRADE ALUMINIUM	JED-007-1 Anodic Oxidation
V	JED-021M3 Thin Sheet,unalloyed Steel	JED-240-5 Paint, steel parts
VI	PP 30% GF BLACK	
VII	JED-376-4 EPDM, 60 IRHD, -40°C	
VIII	JED-020-1 Free-Cutting Steel	JED-256 PASSIVAT. Zn-ALLOY-STEEL
IX	PA 12 PHLV BLACK	
X	JED-051M4 STEEL SCREWS&NUTS,CL.8.8	JED-378 Inorg.Coating ZN/AL
XI	JED-048MI STEEL STRIP FOR SPRINGS	JED-378 Inorg.Coating ZN/AL
XII	JED-021MI Thin sheet,unalloyed steel	JED-256 PASSIVAT. Zn-ALLOY-STEEL
XIII	JED-534-2 PA 6.6, 30% GLASS FIBRES	
XIV	JED-029MI AL-PRESSURE DIE CASTING	JED-259-1 Chromating of Al-alloys
XV	JED-051M4 STEEL SCREWS&NUTS,CL.8.8	JED-378 Inorg.Coating ZN/AL
XVI	NITRILE GEOLAST 701-70 BLACK	
XVII	PPS BRK42B	
XVIII	TO8 200 BLACK	
XIX	JED-051M4 STEEL SCREWS&NUTS,CL.8.8	JED-259 PASSIVAT. Zn-ALLOY-STEEL

Non è permesso copiare o tradurre questo documento, né utilizzarne i contenuti o renderne comunque noto o terzi. Toute communication ou reproduction de ce document, toute exploitation ou communication de son contenu sont interdites, sauf autorisation écrite de la WABCO. Toute réimpression, utilisation, copie ou traduction sans l'autorisation écrite de la WABCO est formellement interdite. Copying of this document and giving it to others and the use or communication of the contents thereof, are forbidden without express authority. Communication of this specification without the written consent of WABCO is prohibited. All rights reserved. All rights are reserved for the owner of the patent or registration of the utility model or design. This document is the property of WABCO.

General Specifications: JED-334-0		Copyright WABCO®	
Further Technical Data: 970 051 402 0		Date	Signature
Doc. Code: 035	Sheet: 1 To 5	2012-08-02	Rossard
General Tolerances JED-261		Checked	
Range of Nominal Dimensions ( ± mm)		2012-08-06	Klueck
Class	1)	Expert	
Fine	0.5	GAYET	
Medium	1.0	Mess	Scale
Coarse	2.0	3	1,000
Tapped Holes acc. JED-152 / ISO 4039		Size	CAD System
1) Tolerance Class Applied Crossmarked		A 1	Pro/E
		Material No.	Date of first issue: 2008-09-24
		970 051 402 0	Doc.Code Language Sheet
		005 ML 2/2	
		Revision Techn. Resp.	Replacement for
		151813 4x L 5630	DRAWING OF 95-03-03