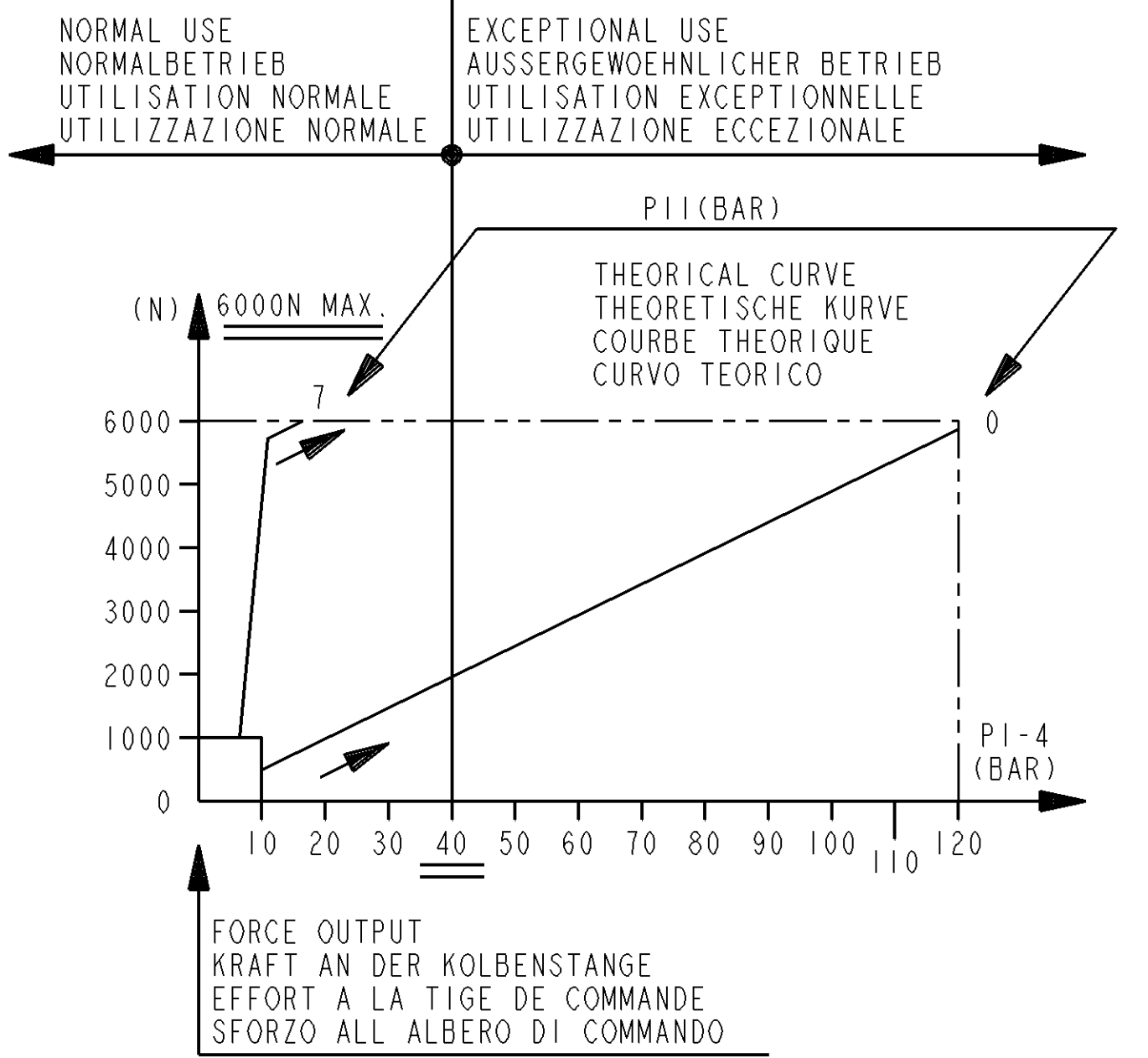
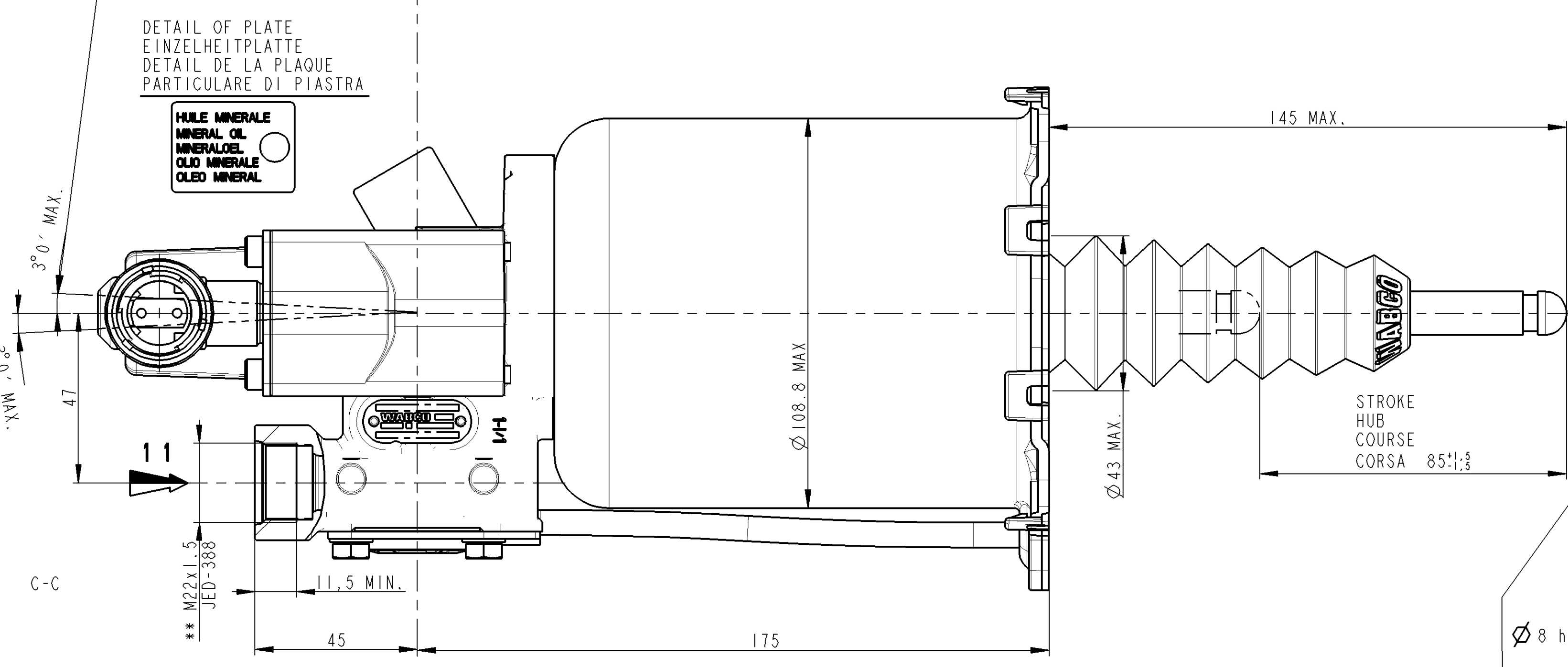


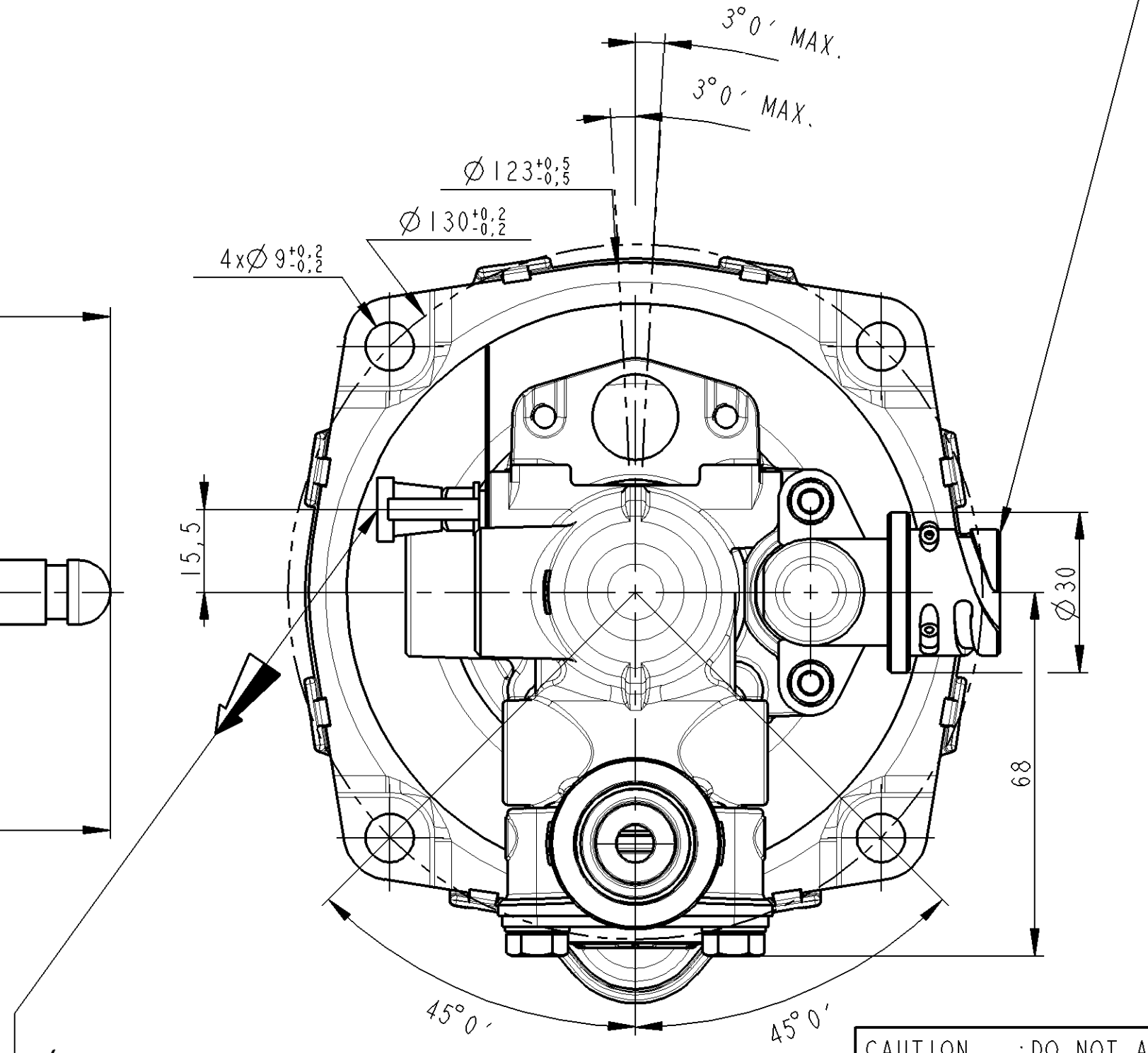
MISALIGNMENT OF PUSH ROD IN ANY DIRECTION  
 AUSLENKUNG DER DRUCKSTANGE ALLSEITIG  
 DEBATTEMENT DE LA BIELLE EN TOUTES DIRECTIONS  
 DEVIAZIONE DELL'ASTA DI COMANDO IN TUTTE LE DIREZIONI



DEVICE EXTREME POSITIONS WHEN BLEEDING  
 MAX. SCHIEFSTAND DES GERÄTES WAHREND DER ENTLUEFTUNG  
 POSITIONS EXTREMES DE L'APPAREIL PENDANT LA PURGE  
 POSIZIONI ESTREME DELL'APPARECCHIO DURANTE LO SPURGO



INSTALLATION POSITION UNIMPORTANT  
 EINBAULAGE BELIEBIG  
 POSITION DE MONTAGE INDIFFERENTE  
 POSIZIONE DI MONTAGGIO INDIFFERENTE



OIL VOLUME INPUT NUTZBARES HYDRAULISCHES VOLUMEN VOLUME D'HUILE ABSORBE VOLUME D'OLIO ASSORBITO		V=(SHx C)+K	
K	ABSORPTION AT 120 BAR AUFNAHME BEI 120 BAR ABSORPTION A 120 BAR ASSORBIMENTO A	FOR FUER POUR C=0 PER	K<1.5 cm <sup>3</sup>
SH	HYDRAULIC SECTIONAL AREA HYDRAULISCHER QUERSCHNITT SECTION HYDRAULIQUE SEZIONE IDRAULICO		4.89 cm <sup>2</sup>
C	GEAR DISENGAGING STROKE AUSKUPPLUNGSHUB COURSE DE DEBRAYAGE CORSO DI DISINNESTO		
HYDRAULIC FLUID : MINERAL OIL HYDRAULIKFLUESSIGKEIT : MINERALOEL FLUIDE HYDRAULIQUE : HUILE MINERALE FLUIDO IDRAULICO : OLIO MINERALE			
THERMAL RANGE THERMISCHER ANWENDUNGSBEREICH TEMPERATURE D'UTILISATION TEMPERATURA DI UTILIZZAZIONE		-40°C...+100°C	
SUPPLY PRESSURE VORRATSDRUCK PRESSION PNEUMATIQUE D'ALIMENTATION PRESSIONE PNEUMATICA DI ALIMENTAZIONE		10 BAR MAX	
NO STROKE LIMITER IN THE DEVICE KEIN HUBBEGRENZUNG IM GERÄET PAS DE LIMITATION DE COURSE DANS L'APPAREIL NESSUNA LIMITAZIONE DI CORSA NELL'APPARECCHIO			

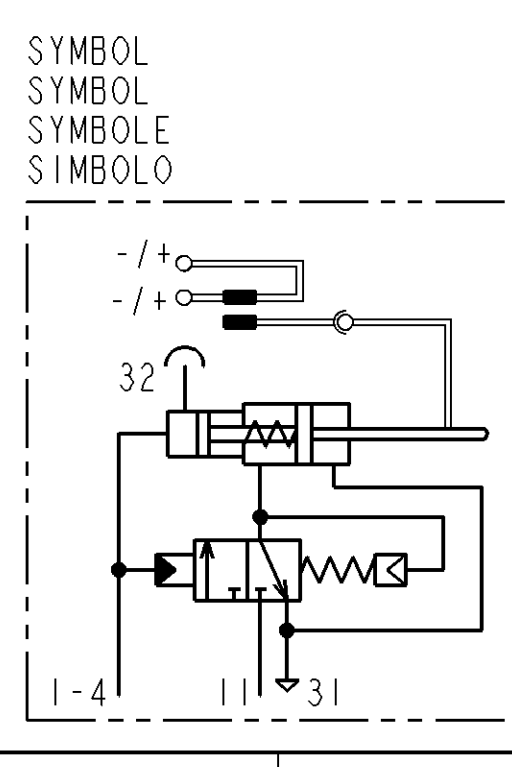
CAUTION : DO NOT ACTUATE THE DEVICE IF NOT FITTED ON ITS MOUNTING BRACKET  
 VORSICHT : GERÄET DARF NUR IM EINGEBAUTEN ZUSTAND BETÄTIGT WERDEN  
 ATTENTION : NE PAS ACTIONNER L'APPAREIL S'IL N'EST PAS FIXE SUR SON SUPPORT  
 ATTENZIONE: NON METTERE IN FUNZIONE L'APPARECCHIO SE NON E' FISSATO AL SUPPORTO

● KURZZEITIGER MAXIMALER BETRIEBSDRUCK 13 BAR EINE STUDE LANG  
 PRESSION DE SERVICE MAX. EXCEPTIONNELLE 1 HEURE A 13 BAR

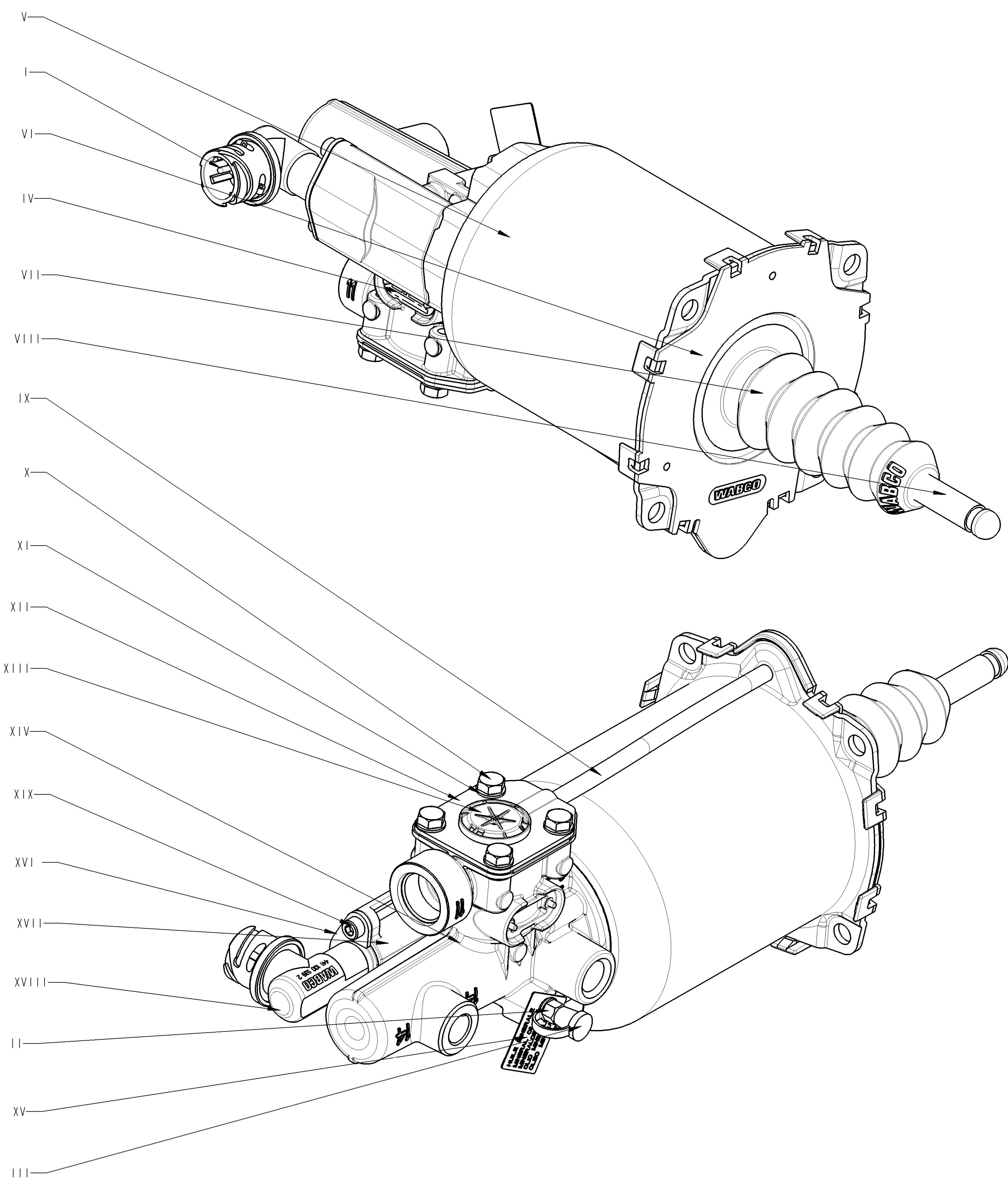
MARKING OF PORTS  
 KENNZEICHNUNG DER ANSCHLUESSE  
 MARQUAGE DES ORIFICES  
 MARCATURA DEGLI ORIFIZI

11	AIR INLET VORRATSLAUFUNG ALIMENTATION AIR ALIMENTAZIONE ARIA	
1-4	OIL INLET OELZUFLUSS ALIMENTATION HUILE ALIMENTAZIONE OLIO	
31	AIR EXHAUST ENTLUEFTUNG ECHAPPEMENT SCARICO	TORQUE FOR CONNECTIONS ANZUGSMOMENT FUER ANSCHLUESSE COUPLE DE SERRAGE DES RACCORDS COPPIA DI SERRAGGIO DEI RACCORDI
32	BLEED SCREW ENTLUEFTUNGSSCHRAUBE VITE DE PURGE VITE DI SPURGO	* 25 N.m MAX ** 53 N.m MAX

LENGTH OF CABLE BETWEEN SENSOR AND ELECTRONICS KABELLANGE ZWISCHEN SENSOR UND ELEKTRONIK LONGUEUR DE CABLE ENTRE CAPTEUR ET ELECTRONIQUE LUGHEZZA DEL CAVO TRA SENSORE E CENTRALINA ELETTRONICA	10m MAX.	MEASURING PRINCIPLE MESSPRINZIP PRINCIPE DE MESURE PRINCIPIO DI MISURA	INDUCTIVE INDUKTIV INDUCTIF INDUTTIVO
SUPPLY VOLTAGE SPEISESPANNUNG TENSION D'ALIMENTATION TENSION D'ALIMENTAZIONE	PULSE IMPULS IMPULSION IMPULSO	OHMIC RESISTANCE OHMSCHER WIDERSTAND RESISTANCE OHMIQUE RESISTANZA OHMICO	72 Ω ± 5 %
PRECISION AFTER CALIBRATION GENAUIGKEIT NACH KALIBRIERUNG PRECISION APRES CALIBRAGE PRECISIONE DOPO CALIBRATURA	± 5 % FULL SCALE	CURRENT CONSUMPTION STROMAUFNAHME CONSUMATION DE COURANT ASSORBIMENTO DI CORRENTE	90mA MAX.



General Specifications: JED-334-0		Copyright WABCO®	
Further Technical Data: 970 051 307 0		Date	Signature
Doc. Code: 035	Sheet: 1 To 3	2012-08-20	Rossard
General Tolerances JED-261		Checked	Gayet
Range of Nominal Dimensions ( ± mm)		Expert Lesaffre	
Class	1) ≤ 50	2) 50 > 180	3) 180 > 400
Fine	0.5	1.0	1.5
Medium	1.0	2.0	3.0
Coarse	2.0	3.5	5.0
			6.5
			± 3°
Tapped Holes acc. JED-192 / ISO 4039		Material No. 970 051 412 0	
1) Tolerance Class Applied Crossmarked		Doc. Code	Language
		005	ML
		Revision	Techn. Resp.
		1x	5630
		Replacement for	
		DRAWING OF 99-01-28	



ITEM REPERE	MATERIAL MATIERE	SURFACE PROTECTION PROTECTION DE SURFACE	
I	JED-570-885 Cu-Zn	JED-570-665	COATING Ag
II	JED-020-M STEEL	JED-256-0	PASSIVAT. Zn-ALLOY-STEEL
III	JED-670 TPE, 75 SHORE A, -40°C	JED-240-5	PAINT. STEEL PART
IV	JED-077-1 HIGH-GRADE ALUMINIUM	JED-007-1	Anodic Oxidation
V	JED-021M3 Thin Sheet,unalloyed Steel	JED-240-5	Paint, steel parts
VI	PP 30% GF BLACK		
VII	JED-376-4 EPDM, 60 IRHD, -40°C		
VIII	JED-626-1 High-Strenth. Free-Cut.Steel	JED-256	PASSIVAT. Zn-ALLOY-STEEL
IX	PA 12 PHLV BLACK		
X	JED-051M4 STEEL SCREWS&NUTS,CL.8.8	JED-378	Inorg.Coating ZN/AL
XI	JED-048M1 STEEL STRIP FOR SPRINGS	JED-378	Inorg.Coating ZN/AL
XII	JED-021M1 Thin sheet,unalloyed steel	JED-256	PASSIVAT. Zn-ALLOY-STEEL
XIII	JED-534-2 PA 6.6, 30% GLASS FIBRES		
XIV	JED-029M1 (C) AL-PRESSURE DIE CASTING	JED-259-1 (C)	Chromating of Al-alloys
XV	JED-077-1 HIGH-GRADE ALUMINIUM		
XVI	JED-021M1 Thin sheet,unalloyed steel	JED-256	PASSIVAT. Zn-ALLOY-STEEL
XVII	JED-029M1 (C) AL-PRESSURE DIE CASTING	JED-259-1 (C)	Chromating of Al-alloys
XVIII	PA 6.6 GF BLACK		
XIX	JED-051M4 STEEL SCREWS&NUTS,CL.8.8	JED-256	PASSIVAT. Zn-ALLOY-STEEL

General Specifications: JED-334-0		Copyright WABCO®	
Further Technical Data: 970 051 307 0		Date	Signature
Doc. Code: 035	Sheets: 1 To 3	2012-08-20	Rossard
General Tolerances JED-261		Checked	Guyot
Range of Nominal Dimensions ( ± mm)		Expert Lesoffre	
Class	1) ≤ 50 > 50 ≤ 180 > 180 ≤ 400 > 400	Mess	Scale
Fine	0,5 1,0 1,5 2,0	2,8	1,000
Medium	1,0 2,0 3,0 4,0	Size	CLD System
Coarse	2,0 3,5 5,0 6,3	A 1	Pro/E
Tapped Holes acc. JED-192 / ISO 4039		Material No. 970 051 412 0	
1) Tolerance Class Applied Crossmarked		Doc.Code	Language
		005	ML
		Revision	Techn. Resp.
		4x	5630
		Replacement for: DRAWING OF 99-01-28	

Toute communication ou reproduction de ce document, toute exploitation ou communication de son contenu sans autorisation, sauf autorisation écrite préalable de WABCO, est formellement interdite. Toute utilisation non autorisée sera poursuivie en justice.

Non è permesso consegnare a terzi o riprodurre questo documento, né utilizzare il contenuto o renderlo comunque noto a terzi senza permesso scritto dalla WABCO. Qualsiasi uso non autorizzato sarà perseguito legalmente.

All rights reserved. Any reproduction, distribution or use of this document without the written permission of WABCO is strictly prohibited.

Copying of this document and giving it to others and the use or communication of the contents thereof, are forbidden without express authority. Communication of this information will constitute an offence under the law in all countries.

This document is the property of WABCO. It is loaned to you for your use only. It is not to be distributed outside your organization.