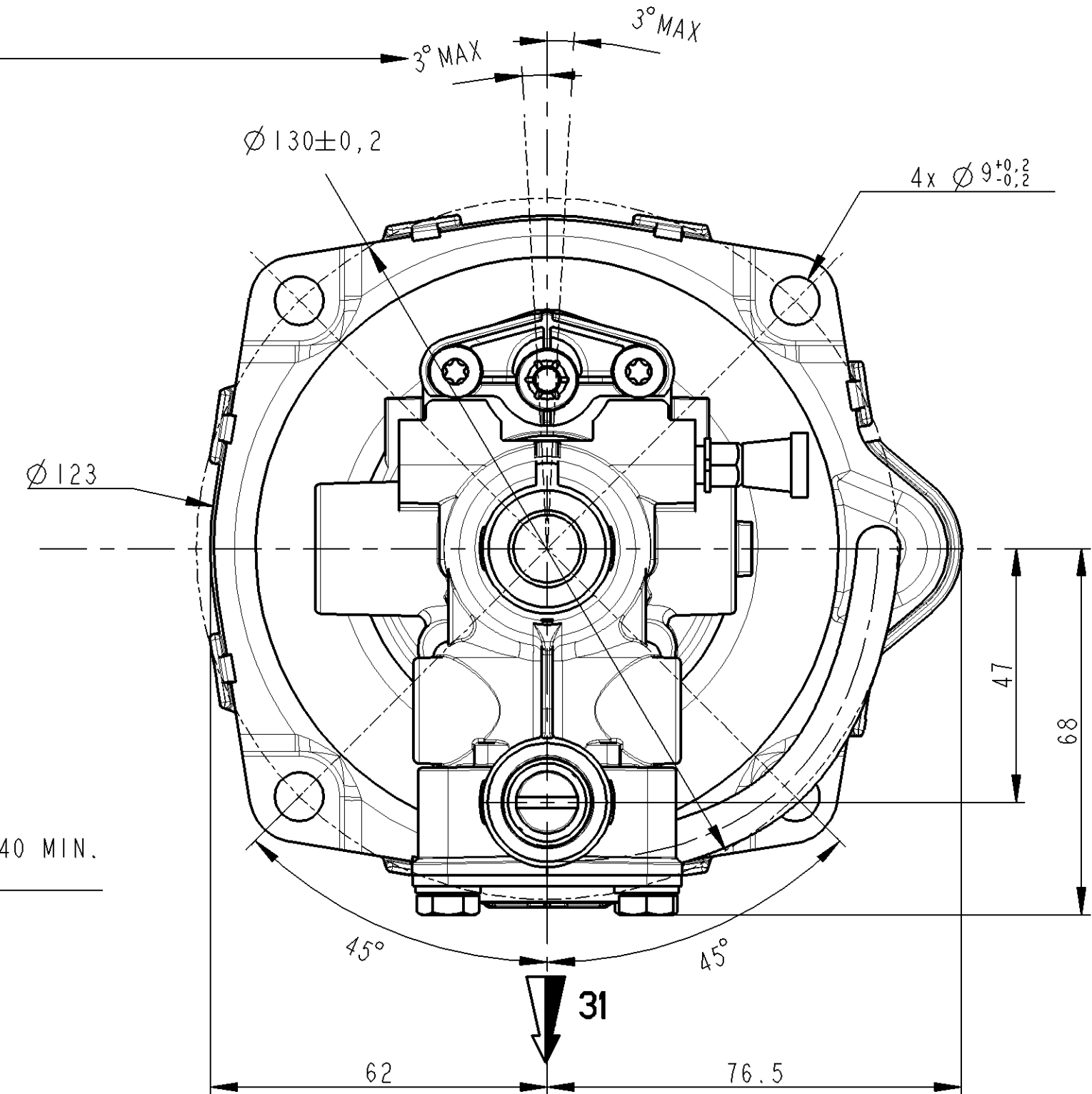
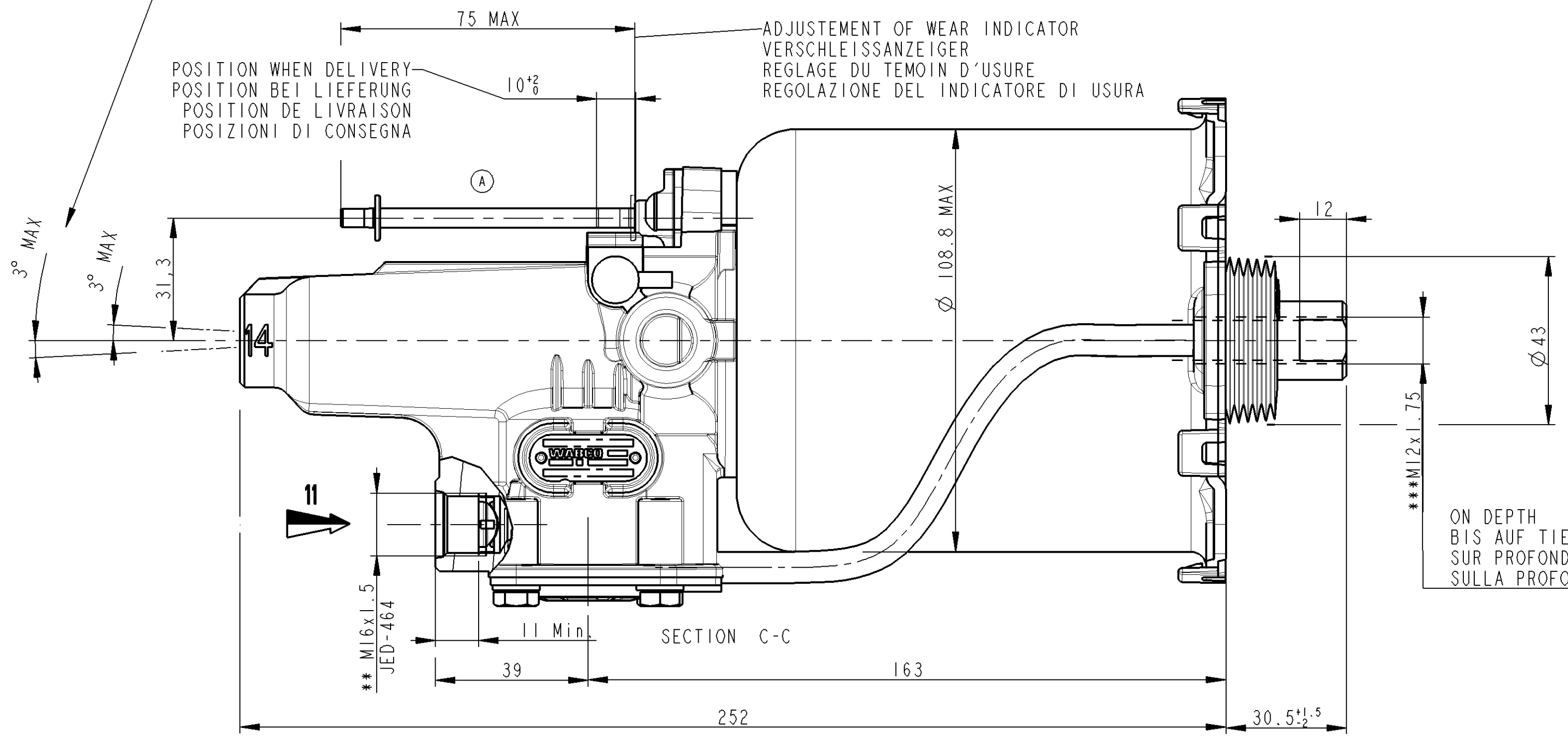
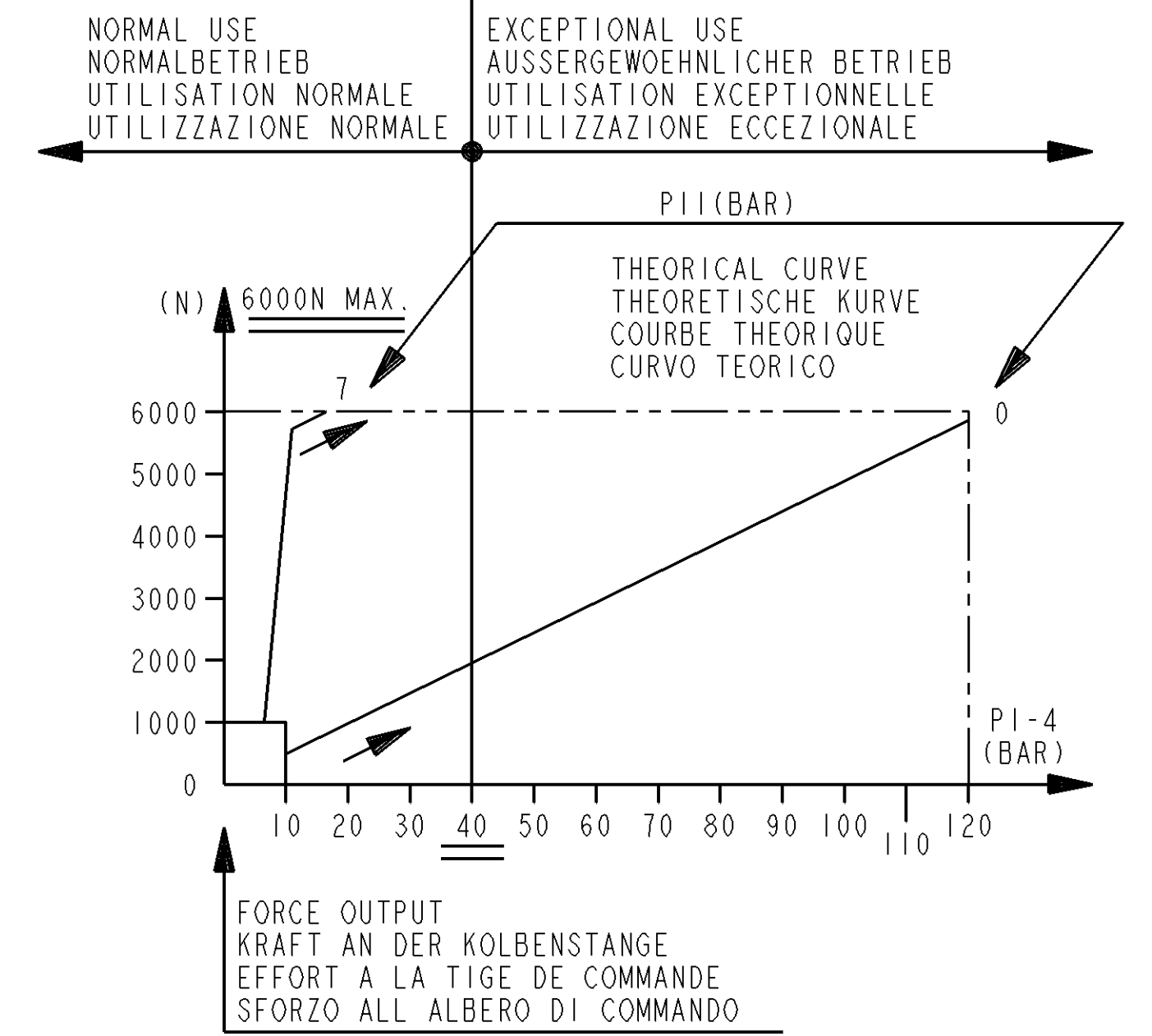
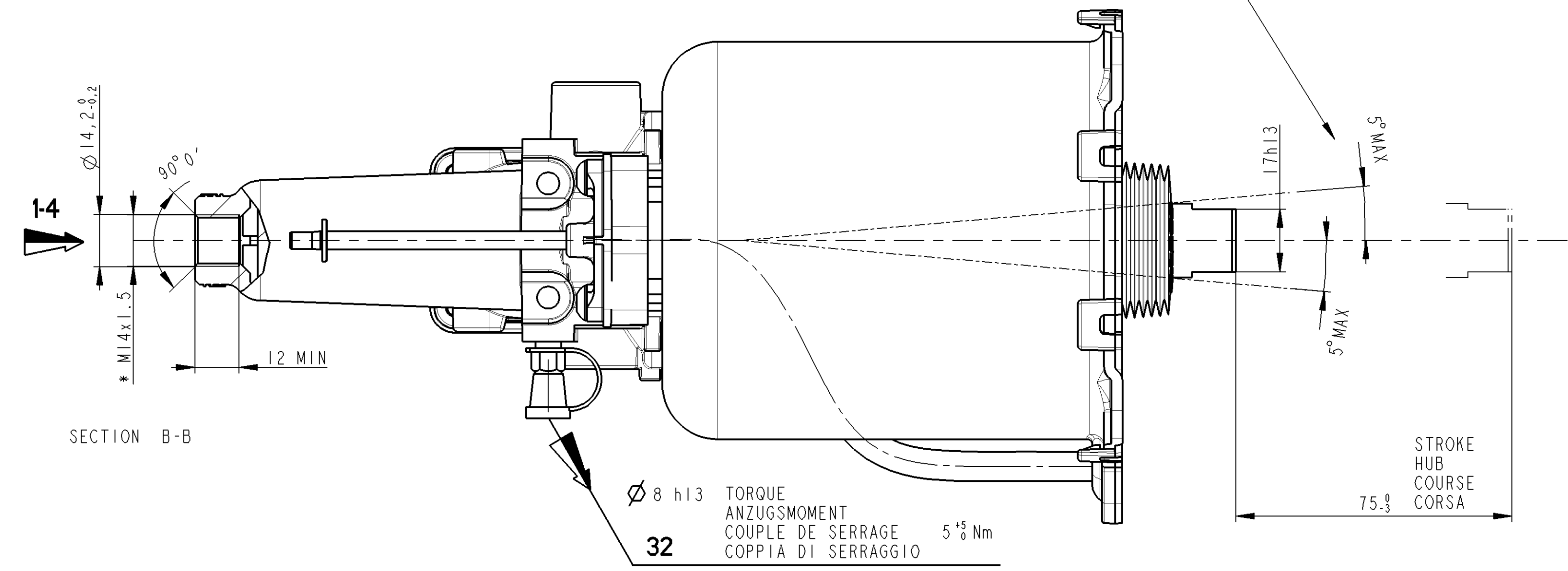


DEVICE EXTREME POSITIONS WHEN BLEEDING
 MAX. SCHIEFSTAND DES GERAETES WAERHEND DER ENTLUEFTUNG
 POSITIONS EXTREMES DE L'APPAREIL PENDANT LA PURGE
 POSIZIONI ESTREME DELL'APPARECCHIO DURANTE LO SPURGO



MISALIGNMENT OF PUSH ROD IN ANY DIRECTION
 AUSLENKUNG DER DRUCKSTANGE ALLSEITIG
 DEBATTEMENT DE LA BIELLE EN TOUTES DIRECTIONS
 DEVIAZIONE DELL'ASTA DI COMMANDE IN TUTTE LE DIREZIONE

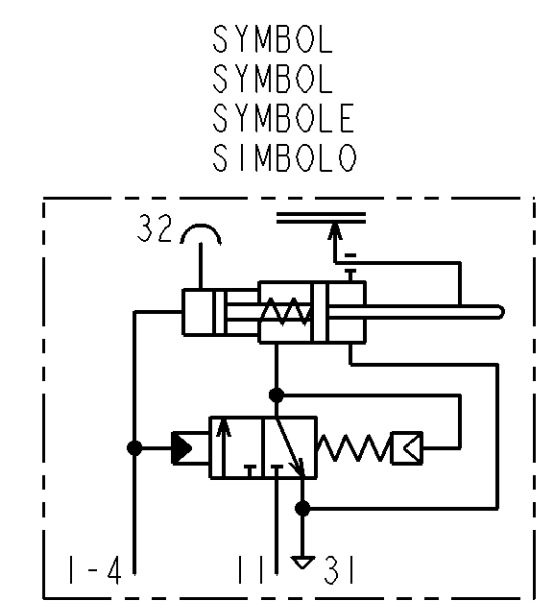


OIL VOLUME INPUT NUTZBARES HYDRAULISCHES VOLUMEN VOLUME D'HUILE ABSORBE VOLUME D'OLIO ASSORBITO		V=(SHx C)+K
K	ABSORPTION AT 120 BAR AUFNAHME BEI 120 BAR ASSORBIMENTO A	FOR FUER PER C=0 K<1.5 cm ³
SH	HYDRAULIC SECTIONAL AREA HYDRAULISCHER QUERSCHNITT SECTION HYDRAULIQUE SEZIONE IDRAULICO	4.89 cm ²
C	GEAR DISENGAGING STROKE AUSKUPPLUNGSHUB COURSE DE DEBRAYAGE CORSO DI DISINNESTO	
HYDRAULIC FLUID : BRAKE FLUID HYDRAULIKFLUESSIGKEIT : BREMSFLUESSIGKEIT SAE FLUIDE HYDRAULIQUE : GLYCERO ALCOOLIQUE J 1703 FLUIDO IDRAULICO : LIQUIDO PER FRENI		
THERMAL RANGE THERMISCHER ANWENDUNGSBEREICH - 30°C...+100°C TEMPERATURE D'UTILISATION TEMPERATURA DI UTILIZZAZIONE		
SUPPLY PRESSURE VORRATSDRUCK 10 BAR MAX PRESSION PNEUMATIQUE D'ALIMENTATION PRESSIONE PNEUMATICA DI ALIMENTAZIONE		
NO STROKE LIMITER IN THE DEVICE KEIN HUBBEGRENZUNG IM GERAET PAS DE LIMITATION DE COURSE DANS L'APPAREIL NESSUNA LIMITAZIONE DI COURSE NELL'APPARECCHIO		

CAUTION : DO NOT ACTUATE THE DEVICE IF NOT FITTED ON ITS MOUNTING BRACKET
 VORSICHT : GERAET DARF NUR IM EINGEBAUTEN ZUSTAND BETÄTIGT WERDEN
 ATTENTION : NE PAS ACTIONNER L'APPAREIL S'IL N'EST PAS FIXE SUR SON SUPPORT
 ATTENZIONE: NON METTERE IN FUNZIONE L'APPARECCHIO SE NON E' FISSATO AL SUPPORTO

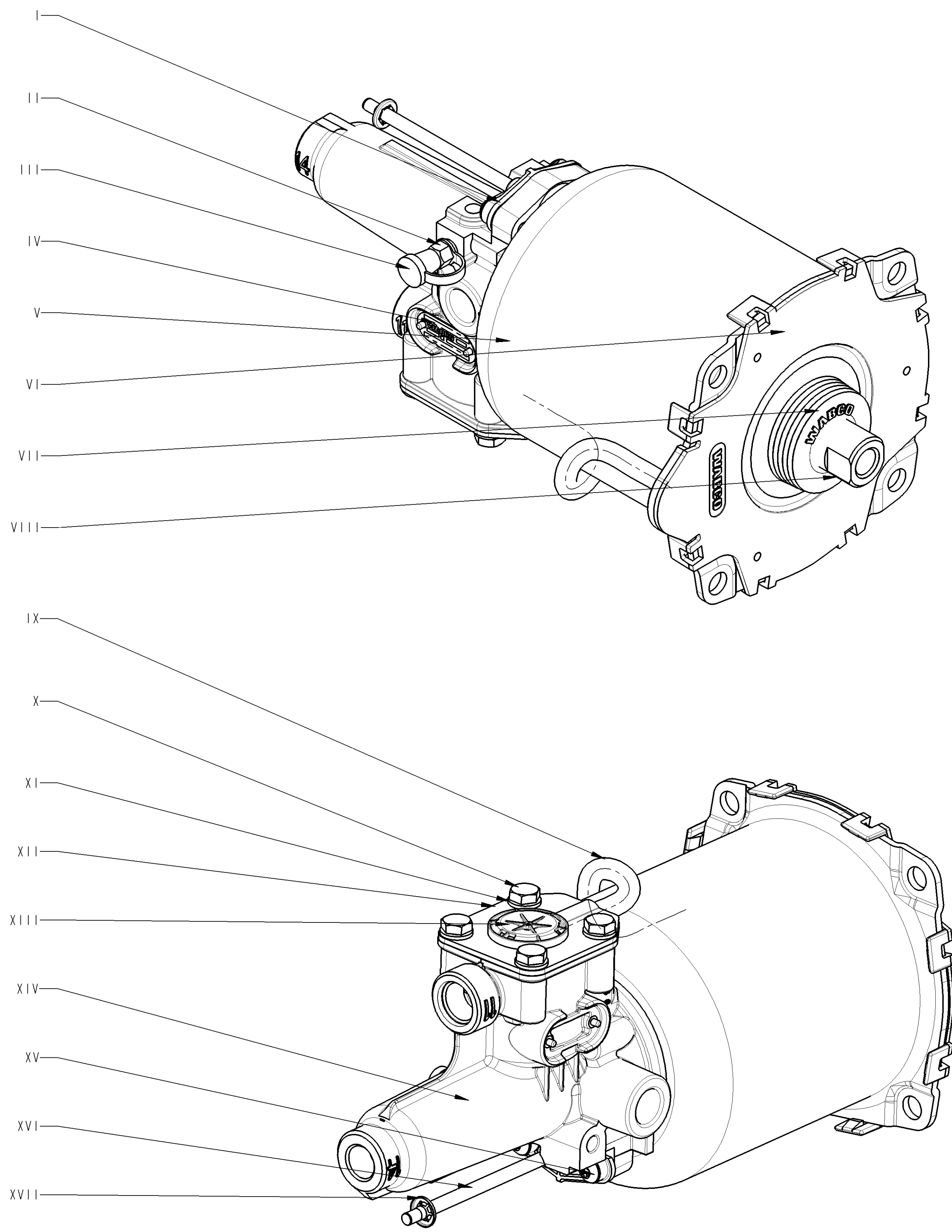
MARKING OF PORTS KENNZEICHNUNG DER ANSCHLUESSE MARQUAGE DES ORIFICES MARCATURA DEGLI ORIFIZI	
11	AIR INLET VORRATSLIEFUNG ALIMENTATION AIR ALIMENTAZIONE ARIA
31	AIR EXHAUST ENTLUEFTUNG ECHAPPEMENT SCARICO
1-4	OIL INLET OELZUFLUSS ALIMENTATION HUILE ALIMENTAZIONE OLIO
32	BLEED SCREW ENTLUEFTUNGSSCHRAUBE VIS DE PURGE VITE DI SPURGO

TORQUE FOR CONNECTIONS ANZUGSMOMENT FUER ANSCHLUESSE COUPLE DE SERRAGE DES RACCORDS COPPIA DI SERRAGGIO DEI RACCORDI	* 25 N.m MAX ** 34 N.m MAX *** 21 N.m MAX
---	---



General Specification: JED-334-0	Copyright WABCO®	Date: 2012-08-06		Signature: [Signature]
Further Technical Data: 970 051 303 0	Doc. Code: 035	Sheet: 1 To 4	Drawn: [Signature]	Checked: [Signature]
General Tolerances JED-261		Range of Nominal Dimensions (± mm)		
Class	1)	≤ 50	> 50 ≤ 180	> 180 ≤ 400
Fine		0.5	1.0	1.5
Medium	✗	1.0	2.0	3.0
Coarse		2.0	3.5	5.0
Tapped Holes acc. JED-152 / ISO 4039		1) Tolerance Class Applied Crossmarked		
Material No.:	970 051 422 0	Date of first issue:	005	ML
Doc. Code:	005	Language:	ML	1/2
Revision:	1x	Techn. Resp.:	5630	Replacement for:
ECN No.:	151813	Revision:	1x	Techn. Resp.:
Size:	A 1	Pro/E:		DRAWING OF 98-09-28

Toute communication de reproduction de ce document, toute exploitation ou communication de son contenu sont interdites, sauf autorisation écrite de WABCO. Toute utilisation non autorisée sera poursuivie devant les tribunaux. WABCO n'est pas responsable des dommages et pertes de quelque nature que ce soit. Toute utilisation non autorisée sera poursuivie devant les tribunaux. WABCO n'est pas responsable des dommages et pertes de quelque nature que ce soit.



ITEM REPERE	MATERIAL MATIERE	SURFACE PROTECTION PROTECTION DE SURFACE	
I	JED-775-6 PPA, reinforced		
II	JED-020-M STEEL	JED-256-0	PASSIVAT. Zn-ALLOY-STEEL
III	JED-670 TPE, 75 SHORE A, -40°C	JED-240-5	PAINT. STEEL PART
IV	JED-077-1 HIGH-GRADE ALUMINIUM	JED-007-1	Anodic Oxidation
V	JED-021M3 Thin Sheet, unalloyed Steel	JED-240-5	Paint, steel parts
VI	PP 30% GF BLACK		
VII	JED-376-4 EPDM, 60 IRHD, -40°C		
VIII	JED-020-1 Free-Cutting Steel	JED-256	PASSIVAT. Zn-ALLOY-STEEL
IX	PA 12 PHLV BLACK		
X	JED-051M4 STEEL SCREWS&NUTS, CL.8.8	JED-378	Inorg.Coating ZN/AL
XI	JED-048M1 STEEL STRIP FOR SPRINGS	JED-378	Inorg.Coating ZN/AL
XII	JED-021M1 Thin sheet, unalloyed steel	JED-256	PASSIVAT. Zn-ALLOY-STEEL
XIII	JED-534-2 PA 6.6, 30% GLASS FIBRES		
XIV	JED-029M1 AL-PRESSURE DIE CASTING	JED-259-1	Chromating of Al-alloys
XV	JED-051M4 STEEL SCREWS&NUTS, CL.8.8	JED-378	Inorg.Coating ZN/AL
XVI	JED-028M Wrought aluminium alloy	JED-008	Hard anodic oxidation
XVII	Z6 CN 18-9 Stainless steel		

This communication or reproduction of its content is prohibited without the written consent of WABCO. Any use of this document for other than the intended purpose is prohibited. WABCO is not responsible for any damage or loss resulting from the use of this document.

General Specifications: JED-334-0		Copyright WABCO®		WABCO	
Further Technical Data: 970 051 303 0		Date	Signature	CLUTCH SERVO	
Doc. Code: 035	Sheet: 1 To 4	2012-08-06	Rossard	KUPPLUNGSVERSTAERKER	
General Tolerances JED-261		2012-08-06	Klueck	SERVO-DEBRAYAGE	
Range of Nominal Dimensions (± mm)		Expert		SERVO-FRIZIONE	
Class	1)	SAUNIER		Material No.	
Fine	0.5	1.0	1.5	2.0	970 051 422 0
Medium	1.0	2.0	3.0	4.0	Date of first issue
Coarse	2.0	3.5	5.0	6.5	005 ML 2/2
Tapped Holes acc. JED-152 / ISO 4039		Size	Scale	Revision	Techn. Resp.
1) Tolerance Class Applied Crossmarked		A 1	3 H/G	2x B	5630
		Pro/E	151813	2x B	5630
		100mm		Replacement for	
				DRAWING OF 98-09-28	