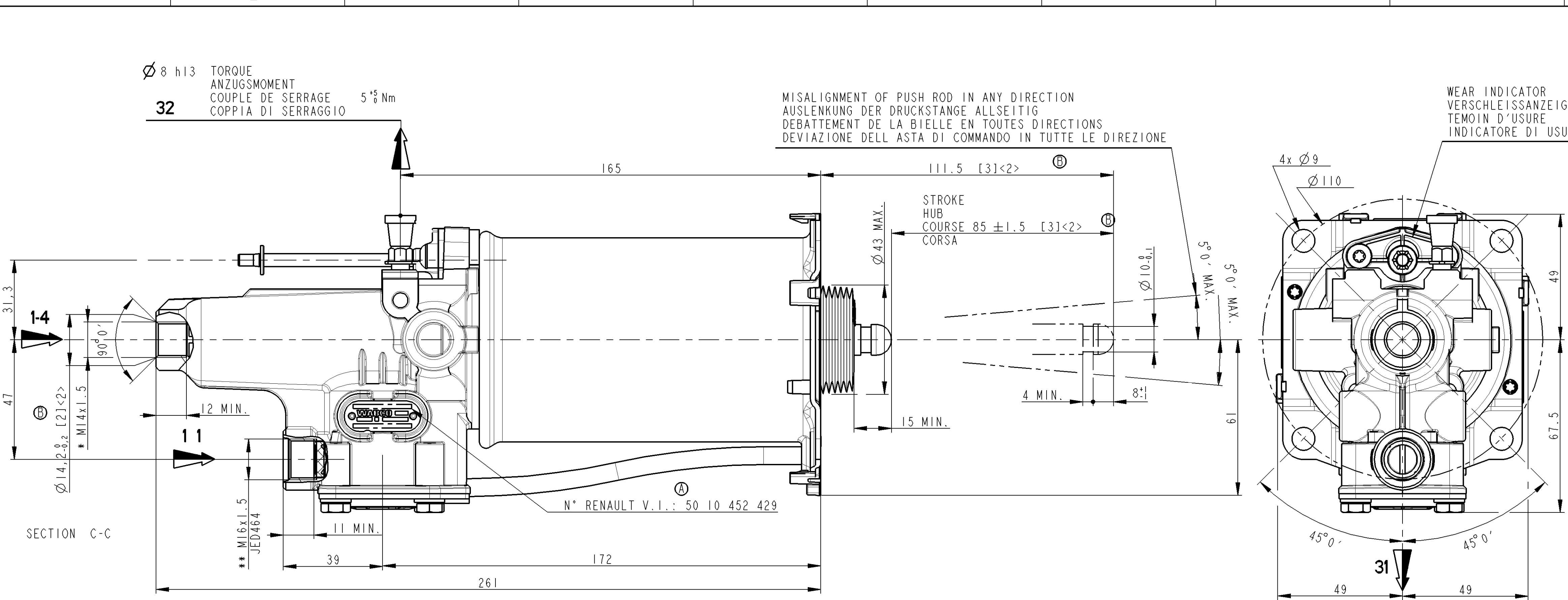
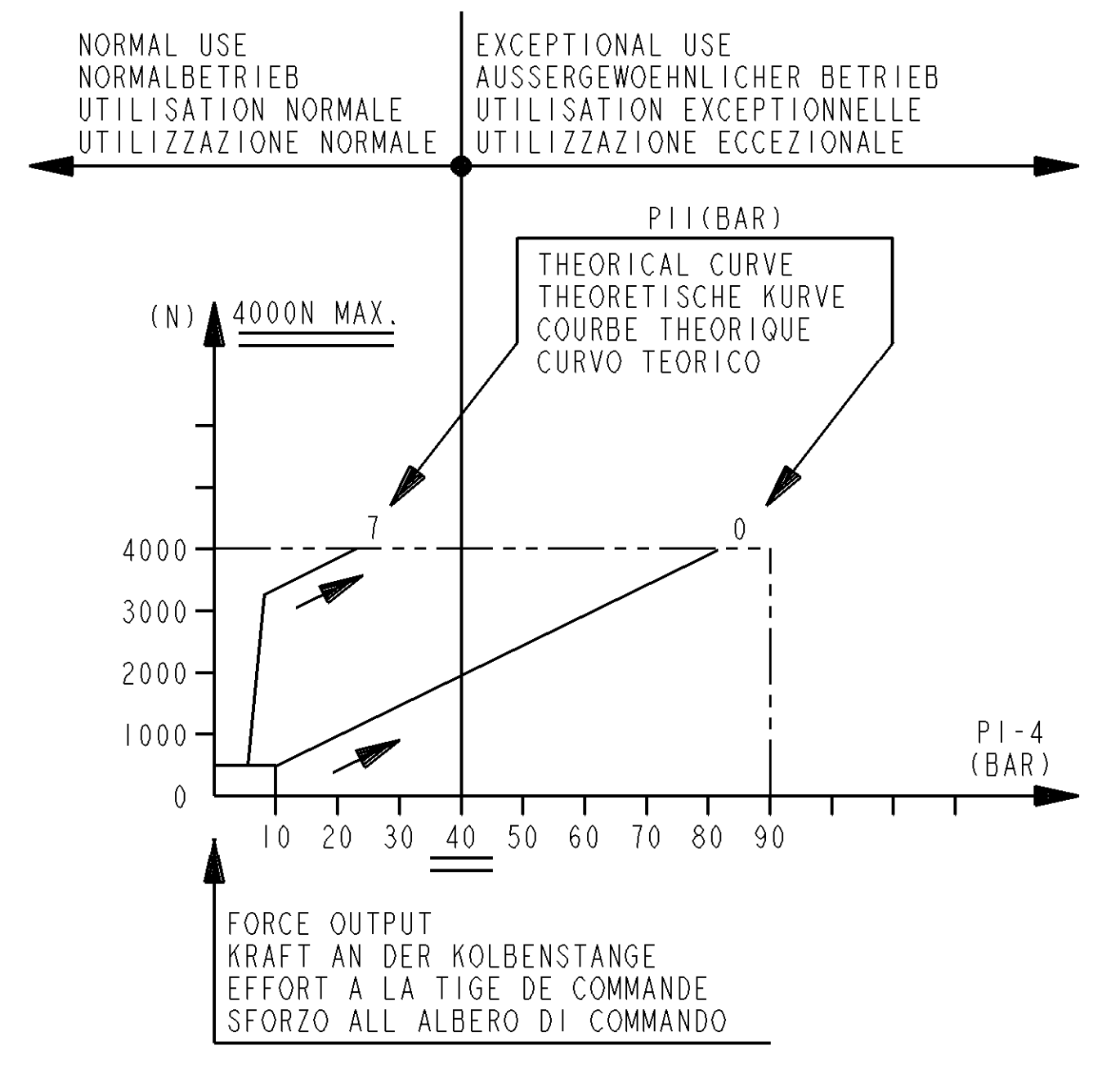


Ø 8 h13 TORQUE  
ANZUGSMOMENT  
COUPLE DE SERRAGE  
COPPIA DI SERRAGGIO 5% Nm

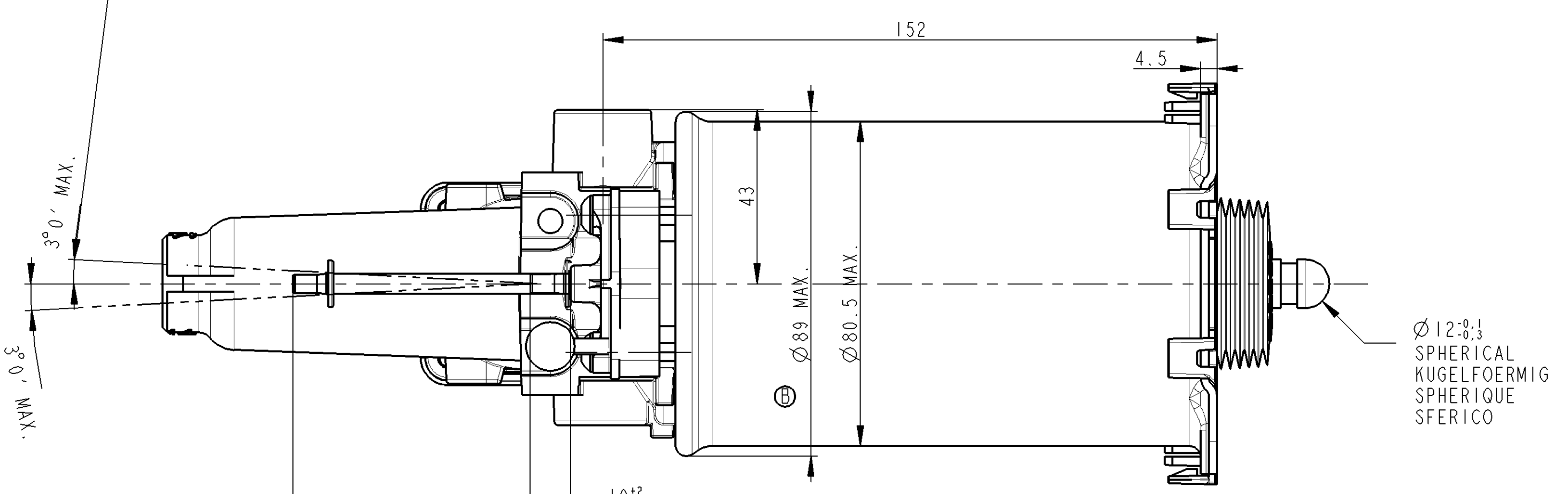
MISALIGNMENT OF PUSH ROD IN ANY DIRECTION  
AUSLENKUNG DER DRUCKSTANGE ALLSEITIG  
DEBATTEMENT DE LA BIELLE EN TOUTES DIRECTIONS  
DEVIAZIONE DELL'ASTA DI COMANDO IN TUTTE LE DIREZIONI

WEAR INDICATOR  
VERSCHLEISSANZEIGER  
TEMOIN D'USURE  
INDICATORE DI USURA



DEVICE EXTREME POSITIONS WHEN BLEEDING  
MAX. SCHIEFSTAND DES GERAETES WAEREND DER ENTLUEFTUNG  
POSITIONS EXTREMES DE L'APPAREIL PENDANT LA PURGE  
POSIZIONI ESTREME DELL'APPARECCHIO DURANTE LO SPURGO

MOUNTING POSITION  
POSITION D'UTILISATION



OIL VOLUME INPUT NUTZBARES HYDRAULISCHES VOLUMEN VOLUME D'HUILE ABSORBE VOLUME D'OLIO ASSORBITO		V=(SHxC)+K	
K	ABSORPTION AT AUFNAHME BEI ABSORPTION A ASSORBIMENTO A	FOR FUEER POUR PER	K<1.5 cm3
SH	HYDRAULIC SECTIONAL AREA HYDRAULISCHER QUERSCHNITT SECTION HYDRAULIQUE SEZIONE IDRAULICO		4.89 cm2
C	GEAR DISENGAGING STROKE AUSKUPPLUNGSHUB COURSE DE DEBRAYAGE CORSA DI DISINNESTO		
HYDRAULIC FLUID HYDRAULIKFLUESSIGKEIT FLUIDE HYDRAULIQUE FLUIDO IDRAULICO		:BRAKE FLUID :BREMSFLUESSIGKEIT :GLYCERO ALCOOLIQUE :LIQUIDO PER FRENI	SAE J 1703
THERMAL RANGE THERMISCHER ANWENDUNGSBEREICH TEMPERATURE D'UTILISATION TEMPERATURA DI UTILIZZAZIONE			-30°C...+100°C
SUPPLY PRESSURE VORRATSDRUCK PRESSION PNEUMATIQUE D'ALIMENTATION PRESSIONE PNEUMATICA DI ALIMENTAZIONE			10 BAR MAX
NO STROKE LIMITER IN THE DEVICE KEIN HUBBEGRENZUNG IM GERAET PAS DE LIMITATION DE COURSE DANS L'APPAREIL NESSUNA LIMITAZIONE DI CORSA NELL'APPARECCHIO			

CAUTION :DO NOT ACTUATE THE DEVICE IF NOT FITTED ON ITS MOUNTING BRACKET  
VORSICHT :GERAET DARF NUR IM EINGEBAUTEN ZUSTAND BETRIETIGT WERDEN  
ATTENTION :NE PAS ACTIONNER L'APPAREIL S'IL N'EST PAS FIXE SUR SON SUPPORT  
ATTENZIONE:NON METTERE IN FUNZIONE L'APPARECCHIO SE NON E'FISSATO AL SUPPORTO

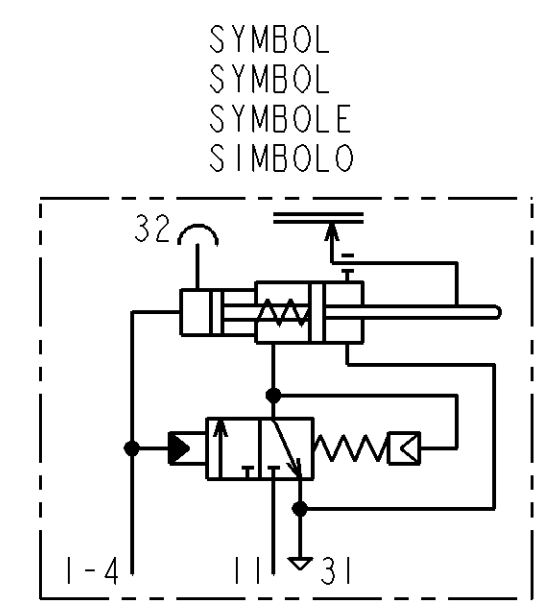
MARKING OF PORTS  
KENNZEICHNUNG DER ANSCHLUESSE  
MARQUAGE DES ORIFICES  
MARCATURA DEGLI ORIFIZI

11	AIR INLET VORRATSLEITUNG ALIMENTATION AIR ALIMENTAZIONE ARIA	
1-4	OIL INLET OELZUFLOSS ALIMENTATION HUILE ALIMENTAZIONE OLIO	
31	AIR EXHAUST ENTLUEFTUNG ECHAPPEMENT SCARICO	TORQUE FOR CONNECTIONS ANZUGSMOMENT FUEER ANSCHLUESSE COUPLE DE SERRAGE DES RACCORDS COPPIA DI SERRAGGIO DEI RACCORDI
32	BLEED SCREW ENTLUEFTUNGSSCHRAUBE VIS DE PURGE VITE DI SPURGO	* 25 N.m MAX ** 34 N.m MAX

POSITION WHEN DELIVERED  
POSITION BEI LIEFERUNG  
POSITION DE LIVRAISON  
POSIZIONE DI CONSEGNA

ADJUSTEMENT OF WEAR INDICATOR  
VERSCHLEISSANZEIGER  
REGLAGE DU TEMOIN D'USURE  
REGOLAZIONE DEL INDICATORE DI USURA

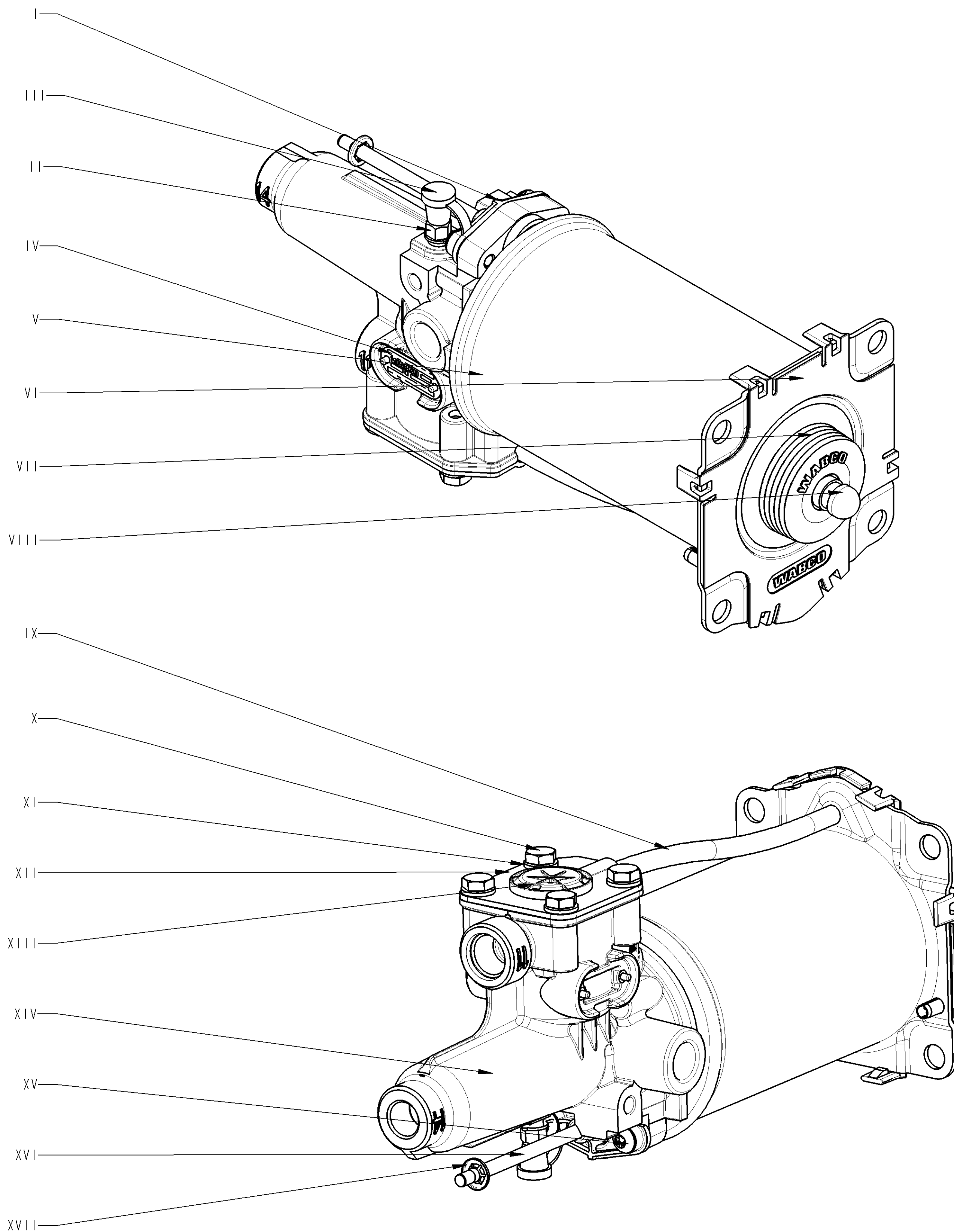
⑥ 3x<> SPECIAL CHARACTERISTICS  
CARACTERISTIQUES SPECIALES



General Specifications JED-334-0		Copyright WABCO®	
Further Technical Data: 970 051 429 0		Date	Signature
Doc. Code: 035	Sheet: 1 To 5	2012-08-09	Rossard
General Tolerances JED-261		Checked	Goyet
Range of Nominal Dimensions ( ± mm)		Expert	Lher
Class	1) ≤ 50	> 50 > 180	> 180 > 400
Fine	0.5	1.0	1.5
Medium	1.0	2.0	3.0
Coarse	2.0	3.5	5.0
			6.5
			±0.3°
Tapped Holes acc. ISO 4039 / JED-152		Material No. 970 051 429 0	
1) Tolerance Class Applied Crossmarked		Doc. Code	Language
A 1	Pro/E	005	ML
Revision		Techn. Resp.	Replaces No.
151813		5630	000-01-10
DRAWING OF 00-01-10			

Toute communication de reproduction de ce document, toute exploitation ou communication de son contenu sans autorisation, sauf autorisation écrite de WABCO, est formellement interdite. Toute réimpression, même partielle, est formellement interdite. Toute utilisation non autorisée de ce document est formellement interdite. Toute utilisation non autorisée de ce document est formellement interdite.

Dwg.: 970054290\_005  
 Tm.: 970054290\_002



ITEM REPERE	MATERIAL MATIERE	SURFACE PROTECTION PROTECTION DE SURFACE	
I	JED-775-6 PPA, reinforced		
II	JED-020-M STEEL	JED-256-0	PASSIVAT. Zn-ALLOY-STEEL
III	JED-670 TPE, 75 SHORE A, -40°C	JED-240-5	PAINT. STEEL PART
IV	JED-077-1 HIGH-GRADE ALUMINIUM	JED-007-1	Anodic Oxidation
V	JED-021M3 Thin Sheet, unalloyed Steel	JED-240-5	Paint, steel parts
VI	JED-462-3 PBT, SEMI-CRYSTALLINE		
VII	JED-376-4 EPDM, 60 IRHD, -40°C		
VIII	JED-626-1 High-Strenth. Free-Cut.Steel	JED-256	PASSIVAT. Zn-ALLOY-STEEL
IX	PA 12 PHLV BLACK		
X	JED-051M4 STEEL SCREWS&NUTS, CL.8.8	JED-378	Inorg.Coating ZN/AL
XI	JED-048M1 STEEL STRIP FOR SPRINGS	JED-378	Inorg.Coating ZN/AL
XII	JED-021M1 Thin sheet, unalloyed steel	JED-256	PASSIVAT. Zn-ALLOY-STEEL
XIII	JED-534-2 PA 6.6, 30% GLASS FIBRES		
XIV	JED-029M1 AL-PRESSURE DIE CASTING	JED-259-1	Chromating of Al-alloys
XV	JED-051M4 STEEL SCREWS&NUTS, CL.8.8	JED-378	Inorg.Coating ZN/AL
XVI	JED-028M Wrought aluminium alloy	JED-008	Hard anodic oxidation
XVII	Z6 CN 18-9 Stainless steel		

Tutti i diritti sono riservati. È vietata espressamente la ristampa o l'uso non autorizzato senza permesso scritto dalla WABCO. Il presente documento è proprietà intellettuale di WABCO. È vietata espressamente la ristampa o l'uso non autorizzato senza permesso scritto dalla WABCO.

General Specifications: JED-334-0		Copyright WABCO®	
Further Technical Data: 970 051 429 0		Date	Signature
Doc. Code: 035	Sheets: 1 To 5	2012-08-09	Drawn Rossard
General Tolerances JED-261		2012-08-09	Checked Goyet
Range of Nominal Dimensions ( ± mm)		Expert Uher	
Class 1)	< 50	> 50 < 180	> 180 < 400
Fine	0,5	1,0	1,5
Medium	1,0	2,0	3,0
Coarse	2,0	3,5	5,0
Tapped Holes acc. ISO 4039 / JED-152		Material No. 970 051 429 0	
1) Tolerance Class Applied Crossmarked		Scale 1:1,000	Date of first issue: 2012-08-09
A 1		Size CAD System Pro/E	Doc.Code Language Sheet 005 ML 2/2
		ECN No. 151813	Revision 2x C
		Techn. Resp. 5630	Replacement for DRAWING OF 00-01-10