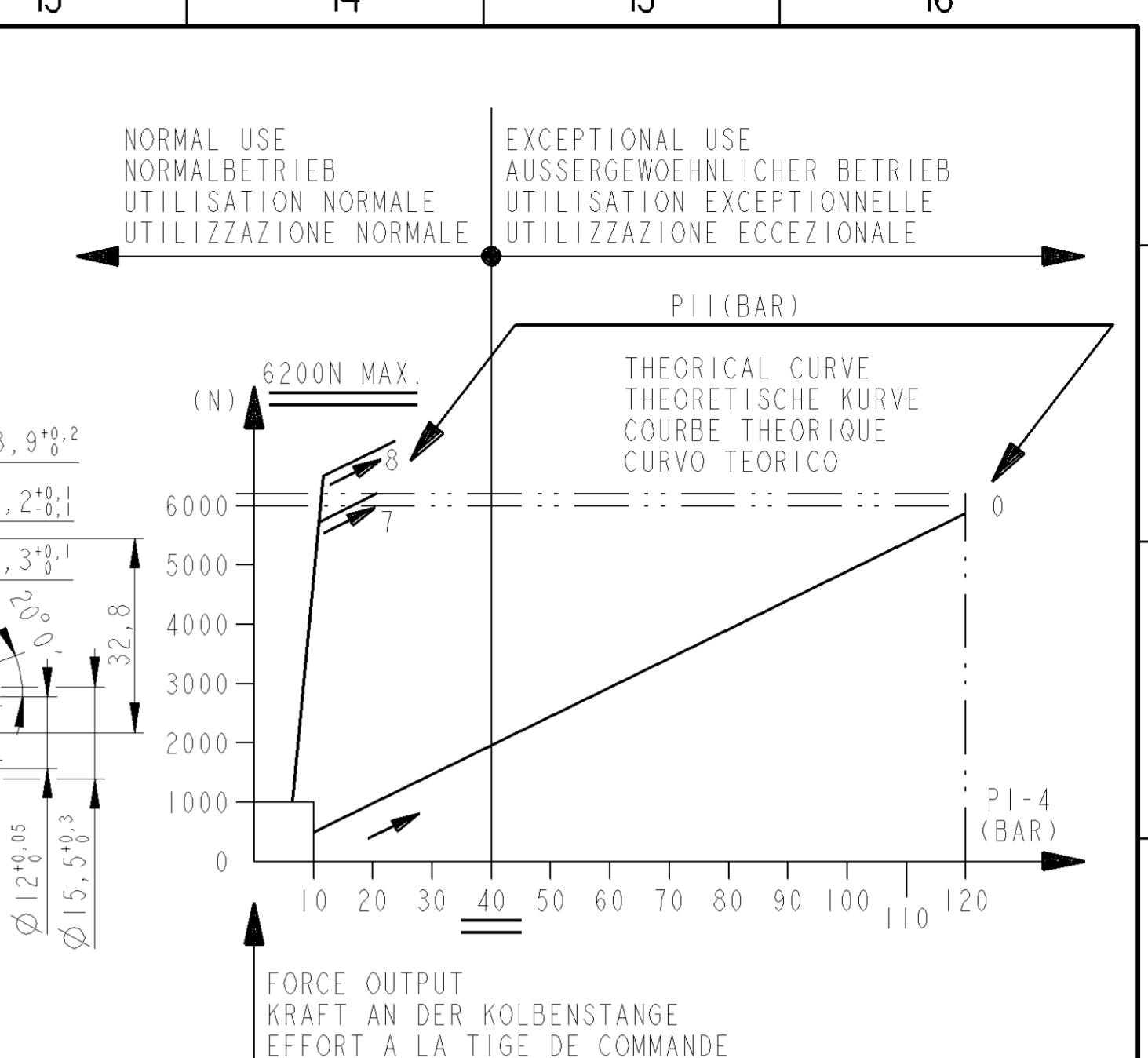
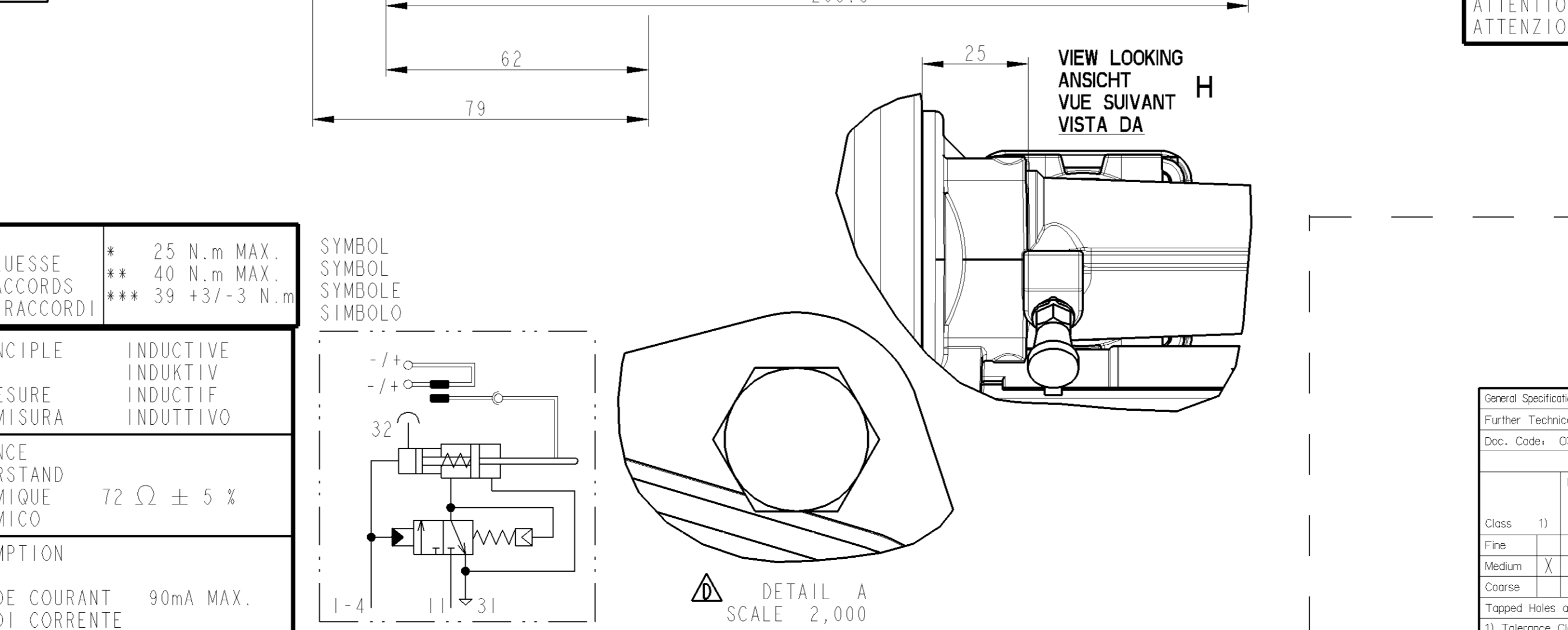
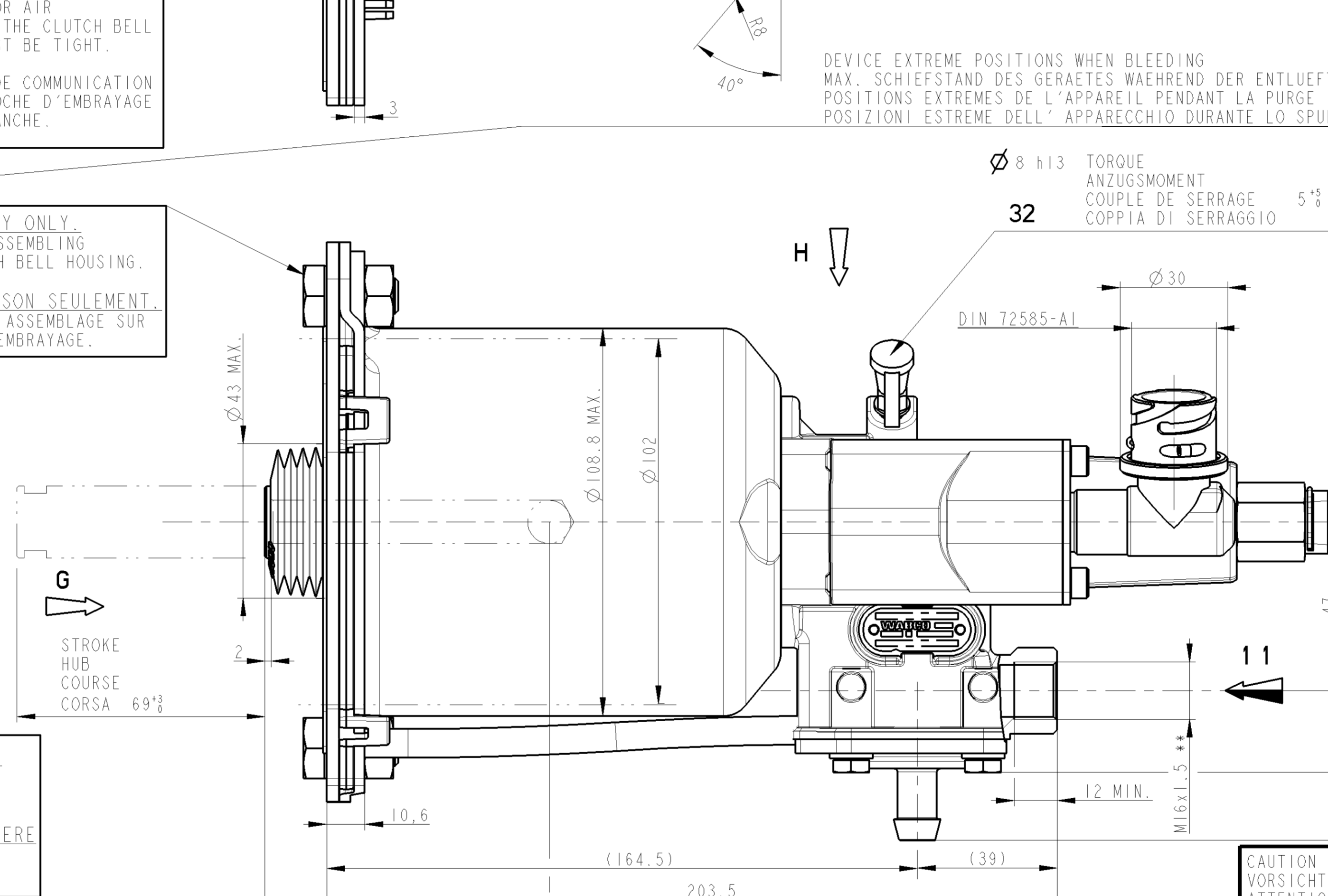
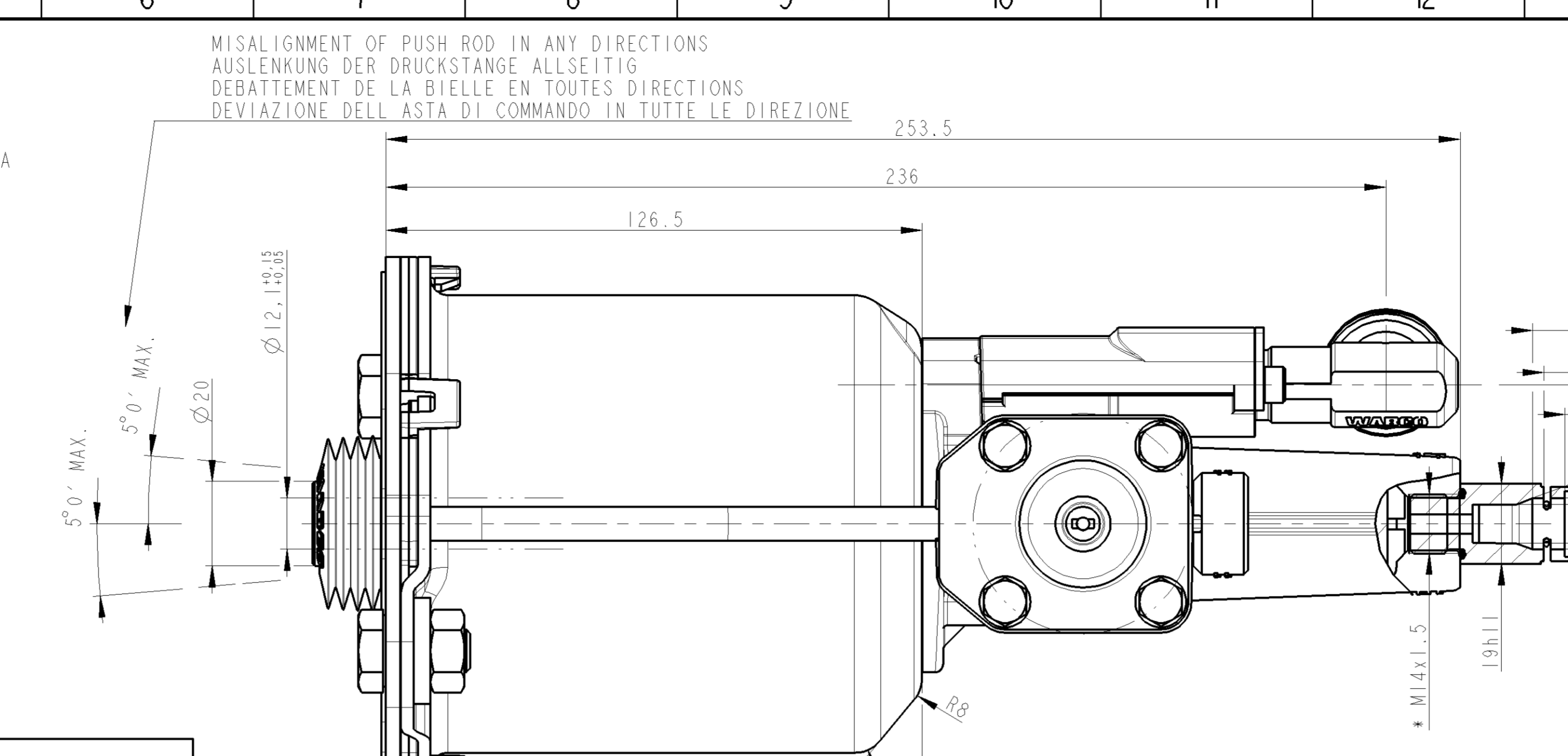


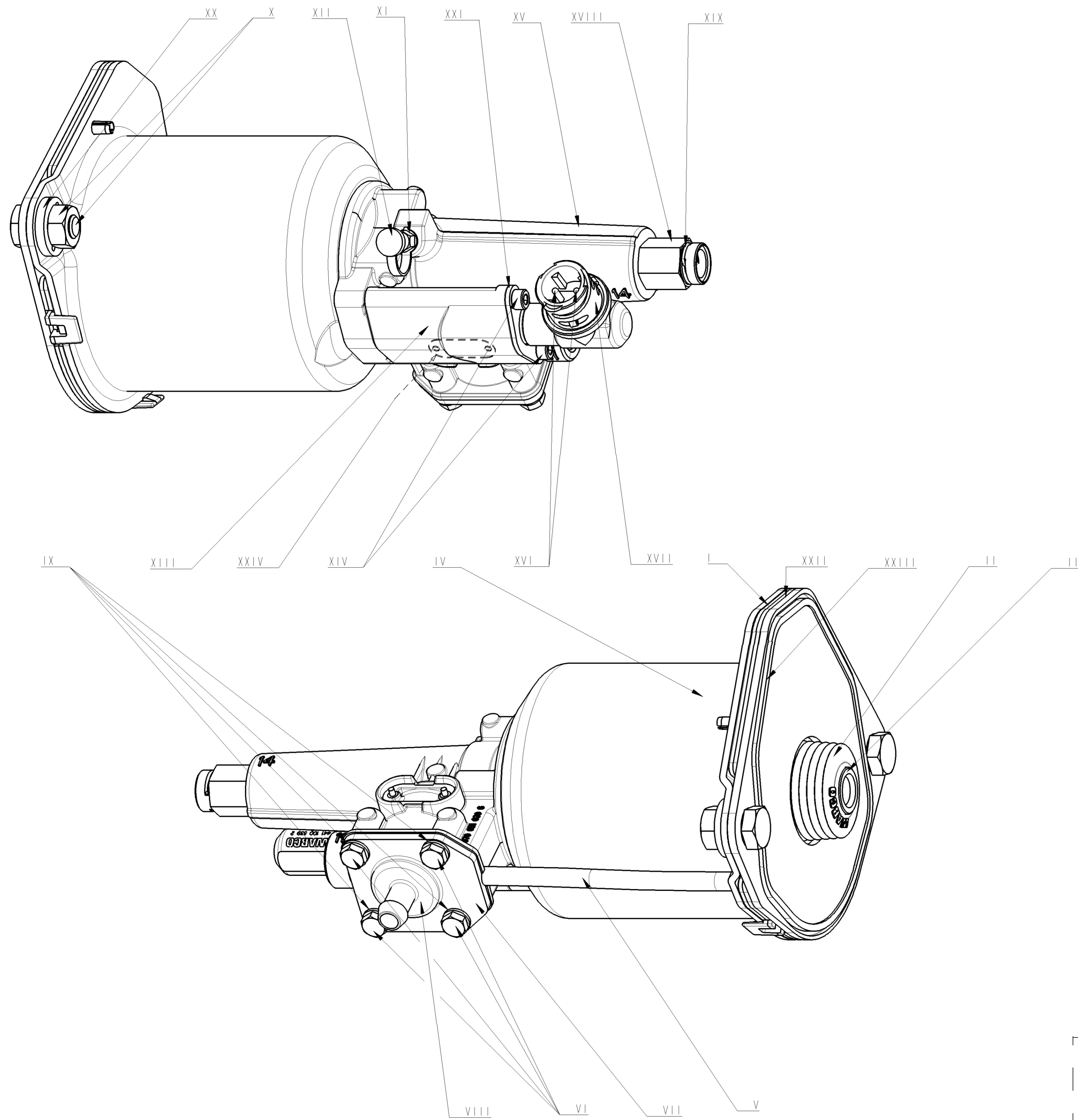
MARKING OF PORTS / KENNZEICHNUNG DER ANSCHLUESSE / MARQUAGE DES ORIFICES / MARCATURA DEGLI ORIFIZI			
11	AIR INLET VORRATSL EITUNG ALIMENTATION AIR ALIMENTAZIONE ARIA	31	AIR EXHAUST ENTLUEFTUNG ECHAPPEMENT SCARICO
1-4	OIL INLET OELZUFLUSS ALIMENTATION HUILE ALIMENTAZIONE OLIO	32	BLEED SCREW ENTLUEFTUNGSSCHRAUBE VIS DE SPURGO
LENGTH OF CABLE BETWEEN SENSOR AND ELECTRONIC KABELLANGE ZWISCHEN SENSOR UND ELEKTRONIK LONGUEUR DE CABLE ENTRE CAPTEUR ET ELECTRONIQUE LUNGHEZZA DEL CAVO TRA SENSORE E CENTRALINA ELETTRONICA		10m MAX.	
SUPPLY VOLTAGE SPEISESPANNUNG TENSION D'ALIMENTATION TENSION D'ALIMENTAZIONE		PULSE IMPULS IMPULSION IMPULO	8 ... 16V DC
PRECISION AFTER CALIBRATION GENAUIGKEIT NACH KALIBRIERUNG PRECISION APRES CALIBRAGE PRECISIONE DOPO CALIBRATURA		± 5 % FULL SCALE	



OIL VOLUME INPUT / NUTZBARES HYDRAULISCHES VOLUMEN / VOLUME D'HUILE ABSORBE / VOLUME D'OLIO ASSORBITO		V=(SHxC)+K	
K	ABSORPTION AT 120 BAR / AUFNAHME BEI 120 BAR / ABSORPTION A 120 BAR / ASSORBIMENTO A	FOR FUEL PER C=0	K<1.5 cm ³
SH	HYDRAULIC SECTIONAL AREA / HYDRAULISCHER QUERSCHNITT / SECTION HYDRAULIQUE / SEZIONE IDRAULICO		4.89 cm ²
C	GEAR DISENGAGING STROKE / AUSKUPPLUNGSHUB / COURSE DE DEBRAYAGE / CORSA DI DISINNESTO		
HYDRAULIC FLUID / HYDRAULIKFLUESSIGKEIT / FLUIDE HYDRAULIQUE / FLUIDO IDRAULICO		BRAKE FLUID / BREMSFLUESSIGKEIT / GLYCERO ALCOOLIQUE / LIQUIDO PER FRENI	SAE J 1703
THERMAL RANGE / THERMISCHER ANWENDUNGSBEREICH / TEMPERATURE D'UTILISATION / TEMPERATURA DI UTILIZZAZIONE			-20°C...+80°C
SUPPLY PRESSURE / VORRATSDRUCK / PRESSION PNEUMATIQUE D'ALIMENTATION / PRESSIONE PNEUMATICA DI ALIMENTAZIONE			10 BAR MAX
NO STROKE LIMITER IN THE DEVICE / KEIN HUBBEGRENZUNG IM GERAET / PAS DE LIMITATION DE COURSE DANS L'APPAREIL / NESSUNA LIMITAZIONE DI CORSA NELL'APPARECCHIO			

CAUTION: DO NOT ACTUATE THE DEVICE IF NOT FITTED ON ITS MOUNTING BRACKET
VORSICHT: GERAET DARF NUR IM EINGEBAUTEN ZUSTAND BETAEETIGT WERDEN
ATTENTION: NE PAS ACTIONNER L'APPAREIL S'IL N'EST PAS FIXE SUR SON SUPPORT
ATTENZIONE: NON METTERE IN FUNZIONE L'APPARECCHIO SE NON E'FISSATO AL SUPPORTO

General Specification: ISO 9015, JED-334-1, Size ISO 14406 LP. Copyright ZF. Further Technical Data: 970 051 405 0. Doc. Code: 035. Sheet: 1 To 4. Date: 2023-02-17. Checked: Sachin. CLUTCH-SERVO. Further technical data: 2023-02-17. A/R. Dimensions in mm. Mass: 3.2 kg. Scale: 1:1. Material No.: 970 051 433 0. Date of first issue: 2001-01-25. Doc. Code: 005 ML 1/2. ECU-NO: 504967. Revision: 1x D. Tech. Resp.: 5630. Replaced for: 504967. DRAWING OF 01-01-25. 1) Tolerance Class Applied Crossmarked.



POS.	MATERIAL MATIERE (JED-502) MATERIALE	SURFACE PROTECTION OBERFLAECHENSCHUTZ PROTECTION DE SURFACE PROTEZIONE SUPERFICIALE (JED-502)
I	PBT - JED-462-3	-
II	EPDM - JED-376-4	-
III	Steel - JED-020-1	Zn JED-256
IV	Steel - JED-021M3	Cataphoretic coating JED-240-5
V	PA12	BLACK - NOIR
VI	Steel CL8-8 JED-051M4	Zn-Al JED-378
VII	Steel - JED-021M1	Zn JED-256
VIII	Al-Cu - JED-623	Passivation-CrIII JED-259
IX	Steel - JED-048M1	Zn-Al JED-378
X	Steel - JED-051M4	Zn JED-256
XI	Steel - JED-020M	Zn JED-256
XII	TPE - JED-670	-
XIII	Al-Si - JED-029M1	Chromating of Al-alloys JED-259-1
XIV	Steel - JED-051M4	Zn JED-256
XV	Al-Si - JED-029M1	Chromating of Al-alloys JED-259-1
XVI	Cu-zn JED-570-885	Ag JED-570-665
XVII	PA6.6, GF	BLACK - NOIR
XVIII	Steel - JED-020-1	WHITE-BLANC Zn (without CR6) JED-256-4
XIX	Steel - JED-049M	Plastic coating JED-232-5
XX	Steel - JED-021M3	Cataphoretic coating JED-240-5
XXI	Steel - JED-021M1	Zn JED-256
XXII	Al-Cu - JED-028M1	Passivation-CrIII JED-259
XXIII	NBR-50Sh	-
XXIV	Al - JED-077-1	Anodic oxydation - JED-007-1

General Specification: ISO 8015, JED-334-1, Size ISO 14405 LP		Copyright ZF®	
Further Technical Data: 970 051 405 0		Date	Signature
Doc. Code: 035	Sheet: 1 To 4	2023-02-17	Sachin
General Tolerances JED-261		2023-02-17	Checked A R
Range of nominal dimensions in mm			
Class	1) ≤ 50	> 50 > 180	> 180 > 400
Fine	±0.5	±1 ±1.5	±2
Medium	±1	±2 ±3	±4
Coarse	±2	±3.5 ±5	±6.5
Dimensions in mm			
Mass	3.2 kg	Scale	1:1
Size	CAD System	Material No.	970 051 433 0
Tapped Holes acc. ISO 4039 / JED-152		Date of first issue	2001-01-25
1) Tolerance Class Applied Crossmarked		Doc.Code	005
		Language	ML
		Revision	-
		Techn. Resp.	5630
		Replacement for	DRAWING OF 01-01-25
		Sheet	2/2

Non è permesso copiare o riprodurre questo documento, né utilizzare il contenuto a scopo commerciale (senza il permesso scritto della ZF).
 Toute réimpression ou reproduction de ce document, toute exploitation ou communication de son contenu sans autorisation écrite de la ZF sont formellement interdites.
 Wollungen sowie Vervielfältigung dieses Unterlagen, Verwertung und Mitteilung ihrer Inhalte nicht gestattet, soweit nicht ausdrücklich anders angegeben.
 All rights reserved. No part of this document may be reproduced or transmitted in any form or by any means electronic or mechanical, including photocopying and recording, or by any information storage or retrieval system, without prior written permission from ZF.