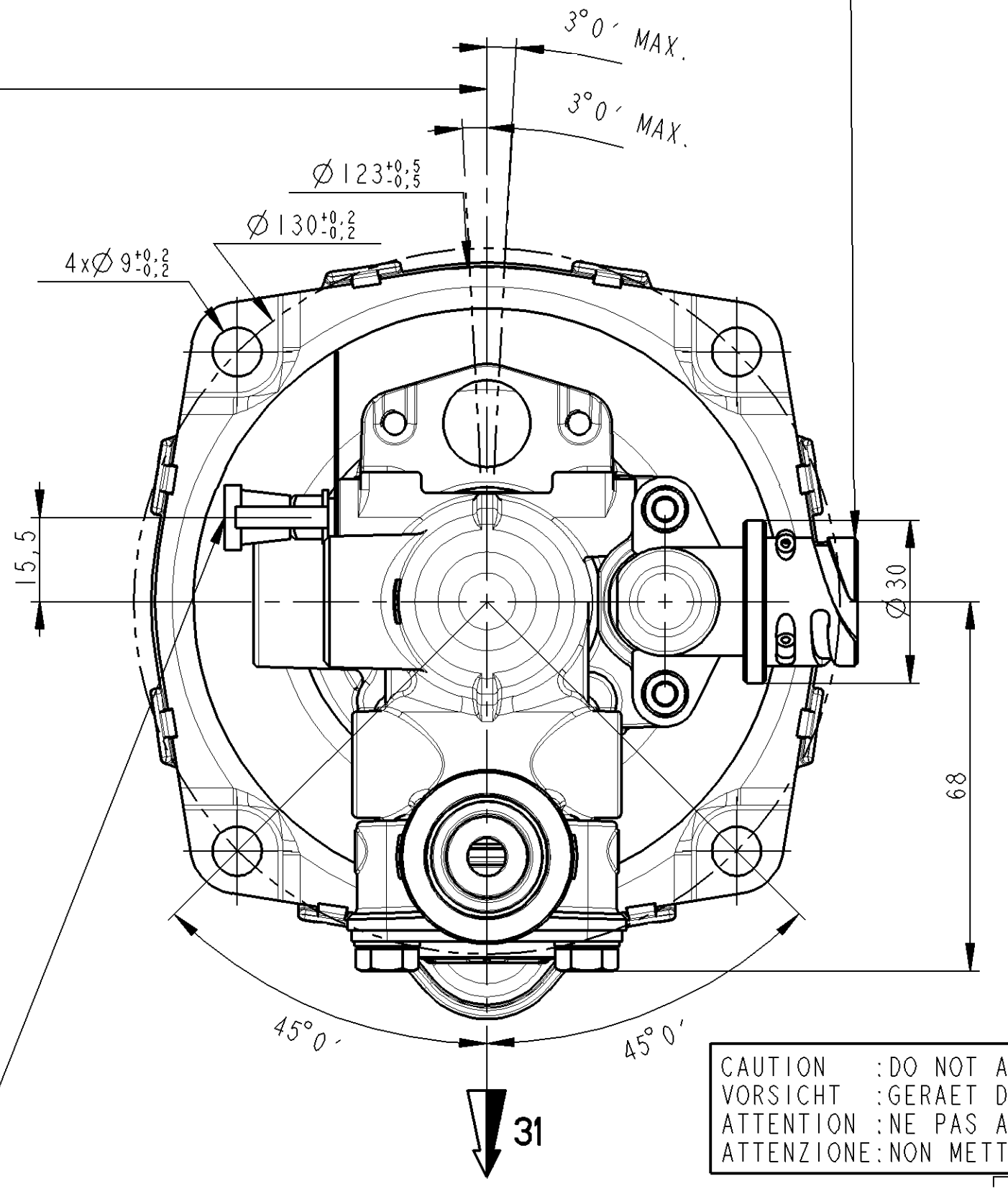
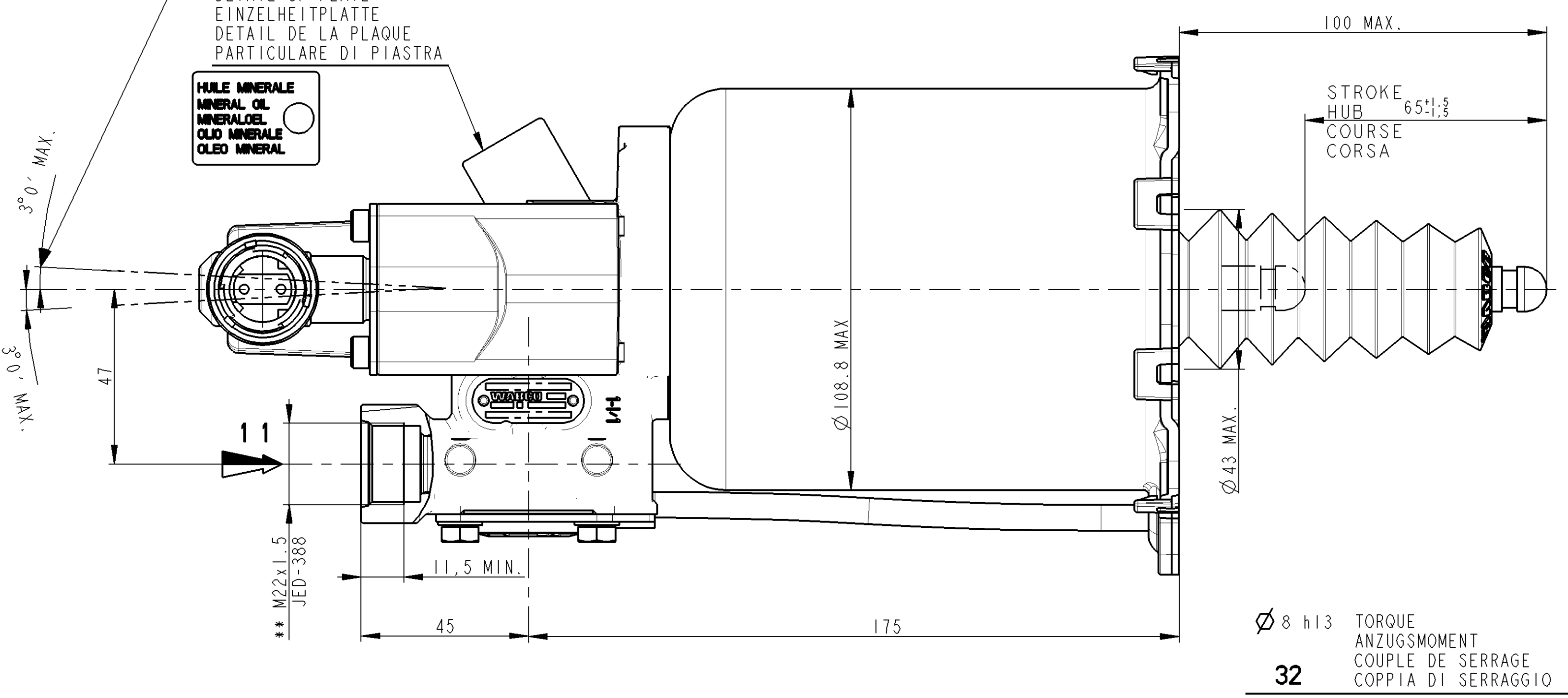


INSTALLATION POSITION UNIMPORTANT
EINBAULAGE BELIEBIG
POSITION DE MONTAGE INDIFFERENTE
POSIZIONE DI MONTAGGIO INDIFFERENTE

DEVICE EXTREME POSITIONS WHEN BLEEDING
MAX. SCHIEFSTAND DES GERAETES WAERHEND DER ENTLUEFTUNG
POSITIONS EXTREMES DE L'APPAREIL PENDANT LA PURGE
POSIZIONI ESTREME DELL'APPARECCHIO DURANTE LO SPURGO

DETAIL OF PLATE
EINZELHEITPLATTE
DETAIL DE LA PLAQUE
PARTICOLARE DI PIASTRA

HUILE MINERALE
MINERAL OIL
FLUIDE HYDRAULIQUE
FLUIDO IDRAULICO



OIL VOLUME INPUT NUTZBARES HYDRAULISCHES VOLUMEN VOLUME D'HUILE ABSORBE VOLUME D'OLIO ASSORBITO		V=(SHxC)+K	
K	ABSORPTION AT AUFNAHME BEI ABSORPTION A ASSORBIMENTO A	FOR FUER POUR PER	K<1.5 cm ³
SH	HYDRAULIC SECTIONAL AREA HYDRAULISCHER QUERSCHNITT SECTION HYDRAULIQUE SEZIONE IDRAULICO		4.89 cm ²
C	GEAR DISENGAGING STROKE AUSKUPPLUNGSHUB COURSE DE DEBRAYAGE CORSO DI DISINNESTO		
HYDRAULIC FLUID HYDRAULIKFLUESSIGKEIT FLUIDE HYDRAULIQUE FLUIDO IDRAULICO		MINERAL OIL MINERALOEL HUILE MINERALE OLIO MINERALE	
THERMAL RANGE THERMISCHER ANWENDUNGSBEREICH TEMPERATURE D'UTILISATION TEMPERATURA DI UTILIZZAZIONE		-40°C...+100°C	
SUPPLY PRESSURE VORRATSDRUCK PRESSION PNEUMATIQUE D'ALIMENTATION PRESSIONE PNEUMATICA DI ALIMENTAZIONE		10 BAR MAX	
NO STROKE LIMITER IN THE DEVICE KEIN HUBBEGRENZUNG IM GERAET PAS DE LIMITATION DE COURSE DANS L'APPAREIL NESSUNA LIMITAZIONE DI CORSA NELL'APPARECCHIO			

CAUTION :DO NOT ACTUATE THE DEVICE IF NOT FITTED ON ITS MOUNTING BRACKET
VORSICHT :GERAET DARF NUR IN EINGEBAUTEN ZUSTAND BETAETIGT WERDEN
ATTENTION :NE PAS ACTIONNER L'APPAREIL S'IL N'EST PAS FIXE SUR SON SUPPORT
ATTENZIONE:NON METTERE IN FUNZIONE L'APPARECCHIO SE NON E'FISSATO AL SUPPORTTO

● KURZZEITIGER MAXIMALER BETRIEBSDRUCK 13 BAR EINE STUDE LANG
PRESSION DE SERVICE MAX. EXCEPTIONNELLE 1 HEURE A 13 BAR

MARKING OF PORTS
KENNZEICHNUNG DER ANSCHLUESSE
MARQUAGE DES ORIFICES
MARCATURA DEGLI ORIFIZI

11	AIR INLET VORRATSLAUFUNG ALIMENTATION AIR ALIMENTAZIONE ARIA
1-4	OIL INLET OELZUFLUSS ALIMENTATION HUILE ALIMENTAZIONE OLIO
31	AIR EXHAUST ENTLUEFTUNG ECHAPPEMENT SCARICO
32	BLEED SCREW ENTLUEFTUNGSSCHRAUBE VIS DE PURGE VITE DI SPURGO

TORQUE FOR CONNECTIONS
ANZUGSMOMENT FUER ANSCHLUESSE
COUPLE DE SERRAGE DES RACCORDS
COPPIA DI SERRAGGIO DEI RACCORDI

SUPPLY VOLTAGE
SPEISESPANNUNG
TENSION D'ALIMENTATION
TENSION D'ALIMENTAZIONE

PULSE
IMPULS
IMPULSION
IMPULSIONE

8 ... 16V DC

PRECISION AFTER CALIBRATION
GENAUIGKEIT NACH KALIBRIERUNG
PRECISION APRES CALIBRAGE
PRECISIONE DOPO CALIBRATURA

± 5 % FULL SCALE

LENGTH OF CABLE BETWEEN SENSOR AND ELECTRONICS
KABELLANGE ZWISCHEN SENSOR UND ELEKTRONIK
LONGUEUR DE CABLE ENTRE CAPTEUR ET ELECTRONIQUE
LUNGHEZZA DEL CAVO TRA SENSORE E CENTRALINA ELETTRONICA

10m MAX.

MEASURING PRINCIPLE
MESSPRINZIP
PRINCIPE DE MESURE
PRINCIPIO DI MISURA

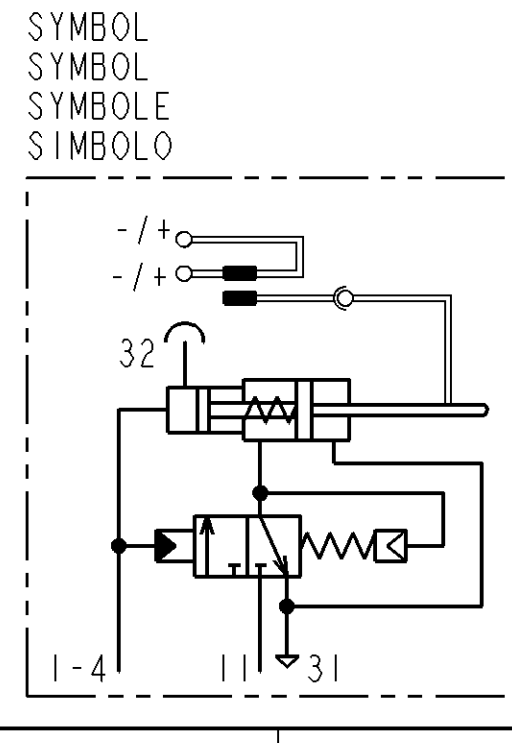
INDUCTIVE
INDUKTIV
INDUCTIF
INDUTTIVO

OHMIC RESISTANCE
OHMSCHER WIDERSTAND
RESISTANCE OHMIQUE
RISISTANZA OHMICO

72 Ω ± 5 %

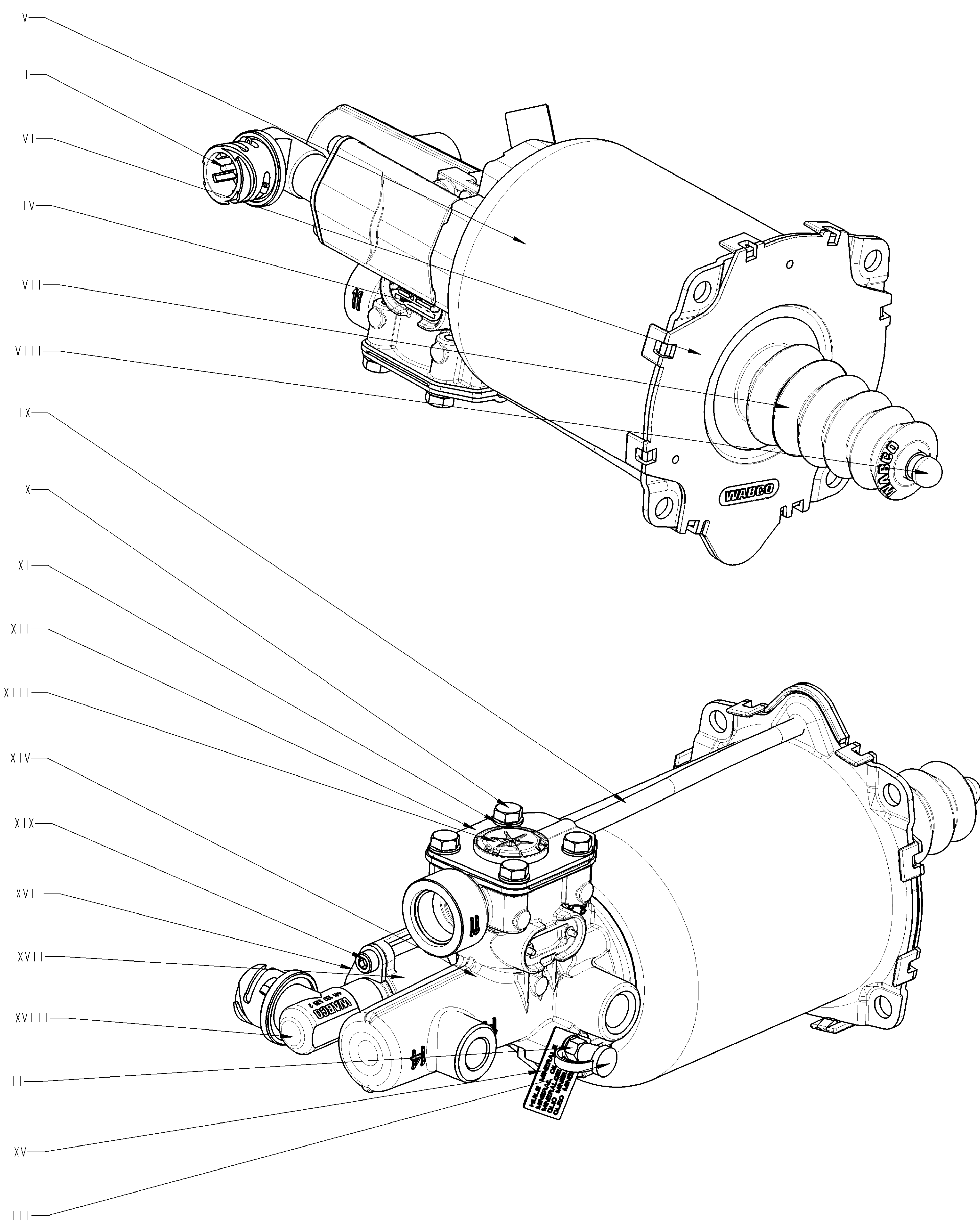
CURRENT CONSUMPTION
STROMAUFNAHME
CONSUMATION DE COURANT
ASSORBIMENTO DI CORRENTE

90mA MAX.



General Specifications JED-334-0		Copyright WABCO®	
Further Technical Data: 970 051 307 0		Date	Signature
Doc. Code: 035	Sheet: 1 To 3	2012-08-20	Rossard
General Tolerances JED-261		Checked	Gayet
Range of Nominal Dimensions (± mm)		Expert	
Class	1) ≤ 50	2) 50 > 180	3) 180 > 400
Fine	0.5	1.0	1.5
Medium	1.0	2.0	3.0
Coarse	2.0	3.5	5.0
Tapped Holes acc. JED-162 / ISO 4039		Material No.	
1) Tolerance Class Applied Crossmarked		970 051 465 0	
Date of first issue: 2007-04-27		Doc.Code	Language
		005	ML
		Sheet 1/2	
A 1		ECN No.	Revision
		151813	1x
		Techn. Resp.	5630
		Replacement for: 884 001 329 0	

Toute communication ou reproduction de ce document, toute exploitation ou communication de son contenu sont interdites, sauf autorisation écrite de WABCO. Toute utilisation non autorisée sera poursuivie devant les tribunaux. WABCO n'est pas responsable des dommages et pertes de quelque nature que ce soit résultant de l'utilisation de ce document. All rights reserved. No part of this document may be reproduced, stored in a retrieval system, or transmitted, in any form or by any means, electronic, mechanical, photocopying, recording, or by any information storage and retrieval system, without the prior written permission of WABCO. WABCO is not responsible for any damages or losses of any kind resulting from the use of this document.



ITEM REPERE	MATERIAL MATIERE	SURFACE PROTECTION PROTECTION DE SURFACE	
I	JED-570-885 Cu-Zn	JED-570-665	COATING Ag
II	JED-020-M STEEL	JED-256-0	PASSIVAT. Zn-ALLOY-STEEL
III	JED-670 TPE, 75 SHORE A, -40°C	JED-240-5	PAINT. STEEL PART
IV	JED-077-1 HIGH-GRADE ALUMINIUM	JED-007-1	Anodic Oxidation
V	JED-021M3 Thin Sheet,unalloyed Steel	JED-240-5	Paint, steel parts
VI	PP 30% GF BLACK		
VII	JED-376-4 EPDM, 60 IRHD, -40°C		
VIII	JED-626-1 High-Strenth. Free-Cut.Steel	JED-256	PASSIVAT. Zn-ALLOY-STEEL
IX	PA 12 PHLV BLACK		
X	JED-051M4 STEEL SCREWS&NUTS,CL.8.8	JED-378	Inorg.Coating ZN/AL
XI	JED-048M1 STEEL STRIP FOR SPRINGS	JED-378	Inorg.Coating ZN/AL
XII	JED-021M1 Thin sheet,unalloyed steel	JED-256	PASSIVAT. Zn-ALLOY-STEEL
XIII	JED-534-2 PA 6.6, 30% GLASS FIBRES		
XIV	JED-029M1 (A) AL-PRESSURE DIE CASTING	JED-259-1 (A)	Chromating of Al-alloys
XV	JED-077-1 HIGH-GRADE ALUMINIUM		
XVI	JED-021M1 Thin sheet,unalloyed steel	JED-256	PASSIVAT. Zn-ALLOY-STEEL
XVII	JED-029M1 (A) AL-PRESSURE DIE CASTING	JED-259-1 (A)	Chromating of Al-alloys
XVIII	PA 6.6 GF BLACK		
XIX	JED-051M4 STEEL SCREWS&NUTS,CL.8.8	JED-256	PASSIVAT. Zn-ALLOY-STEEL

General Specifications: JED-334-0		Copyright WABCO®	
Further Technical Data: 970 051 307 0		Date	Signature
Doc. Code: 035	Sheets: 1 To 3	2012-08-20	Drawn: Rossard
General Tolerances JED-261		2012-08-20	Checked: Gayet
Range of Nominal Dimensions (± mm)		Expert: GAYET	
Class 1)	< 50	> 50 < 180	> 180 < 400
Fine	0.5	1.0	1.5
Medium	1.0	2.0	3.0
Coarse	2.0	3.5	5.0
Tapped Holes acc. JED-192 / ISO 4039		Material No. 970 051 465 0	
1) Tolerance Class Applied Crossmarked		Scale: 1,000	Date of first issue: 2007-04-27
		Size: A 1	Doc.Code: 005
		Pro/E	Language: ML
		151813	Sheet: 2/2
		4x A	Replaces: 884 001 329 0
		5630	
		100mm	

Toute communication ou reproduction de ce document, toute exploitation ou communication de son contenu sans autorisation, sauf autorisation écrite de WABCO, est formellement interdite. Toute utilisation non autorisée sera considérée comme une violation de la loi sur le droit de propriété intellectuelle. Toute réimpression ou utilisation non autorisée sans la permission écrite de WABCO est formellement interdite. Toute utilisation non autorisée sera considérée comme une violation de la loi sur le droit de propriété intellectuelle.