

OIL VOLUME INPUT
 NUTZBARES HYDRAULISCHES VOLUMEN
 VOLUME D'HUILE ABSORBE
 VOLUME D'OLIO ASSORBITO

$V = (SH \times C) + K$

K	ABSORPTION AT 120 BAR AUFNAHME BEI 120 BAR ASSORBIMENTO A	FOR FUER POUR PER C=0	K < 1.5 cm ³
SH	HYDRAULIC SECTIONAL AREA HYDRAULISCHER QUERSCHNITT SECTION HYDRAULIQUE SEZIONE IDRAULICO		4.89 cm ²
C	GEAR DISENGAGING STROKE AUSKUPPLUNGSHUB COURSE DE DEBRAYAGE CORSO DI DISINNESTO		

HYDRAULIC FLUID : MINERAL OIL
 HYDRAULIKFLUESSIGKEIT : MINERALOEL
 FLUIDE HYDRAULIQUE : HUILE MINERALE
 FLUIDO IDRAULICO : OLIO MINERALE

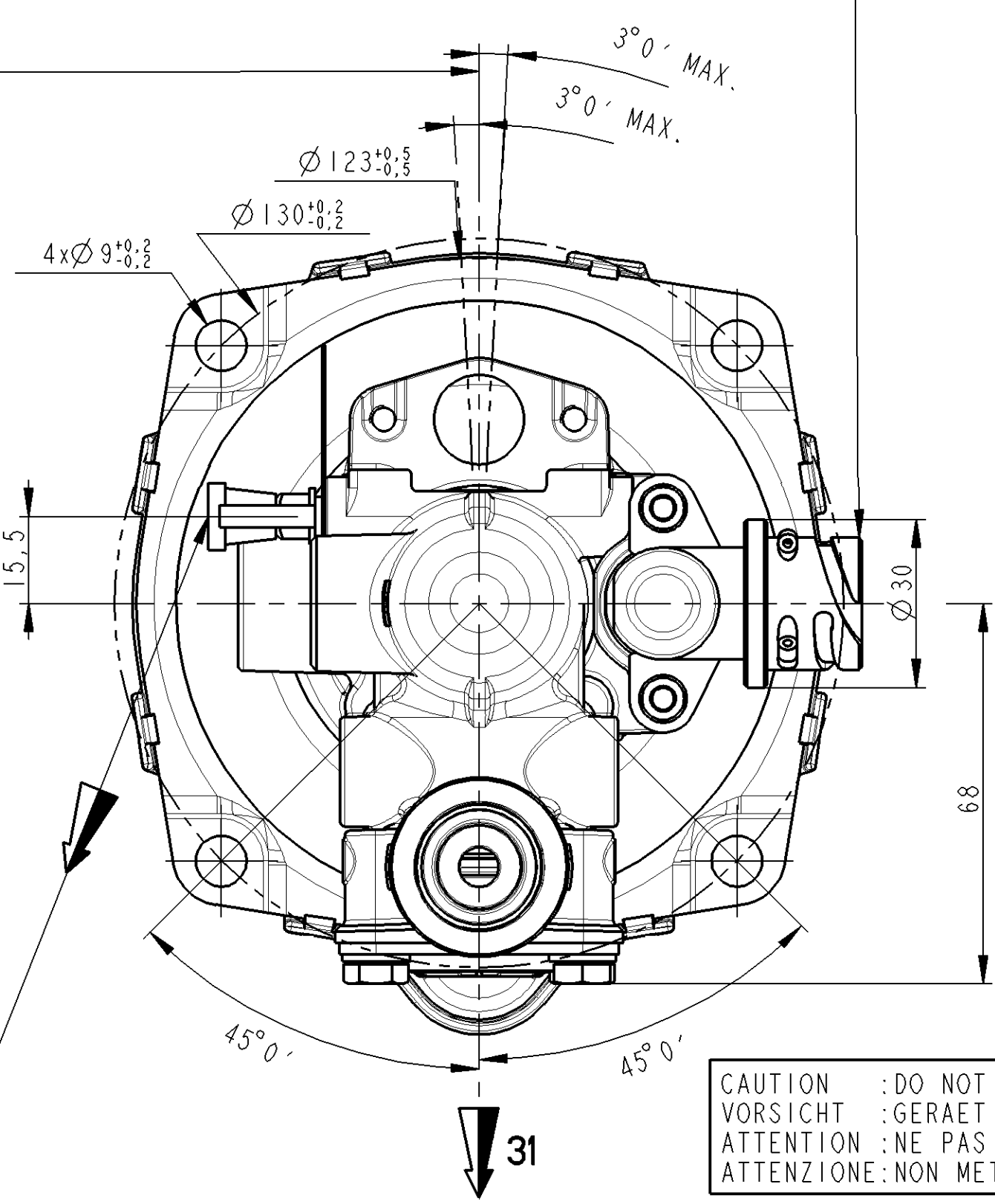
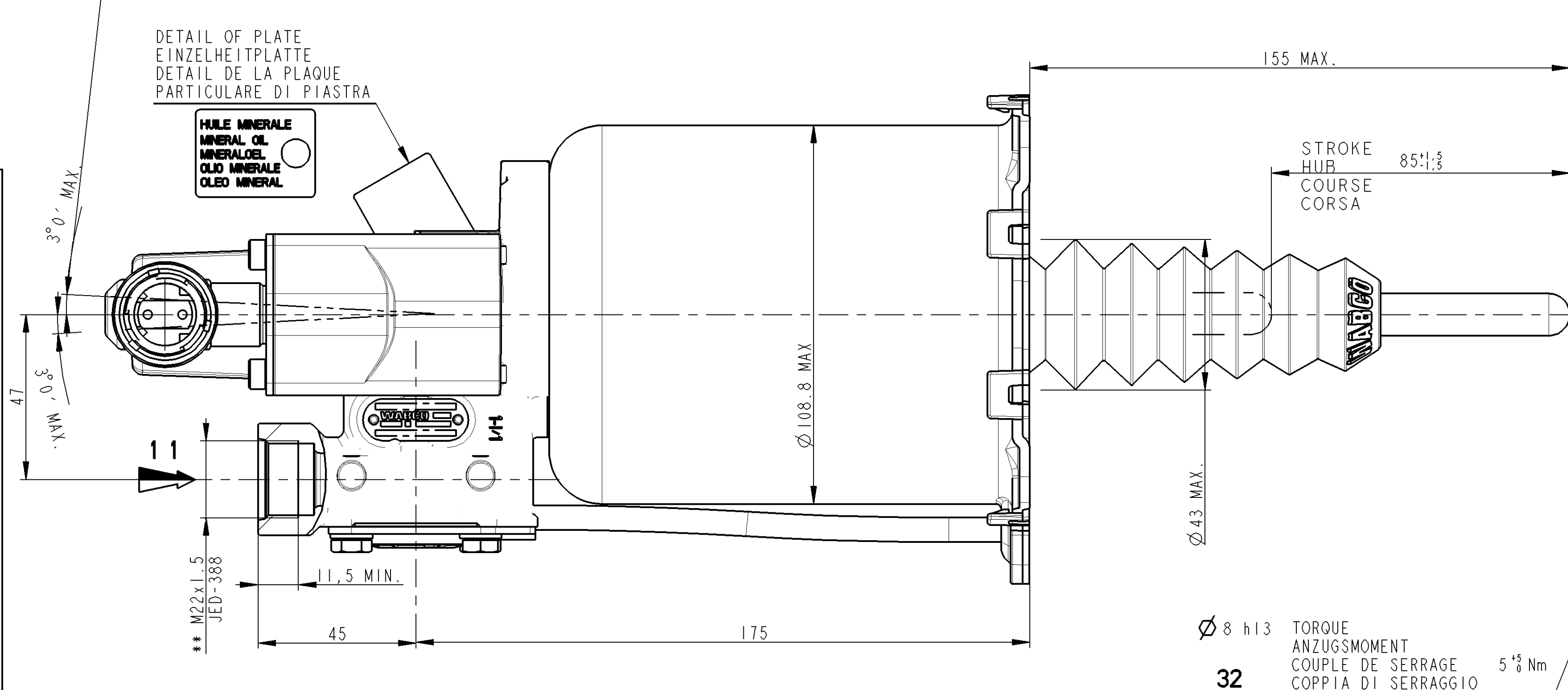
THERMAL RANGE : -40°C...+100°C
 THERMISCHER ANWENDBEREICH :
 TEMPERATURE D'UTILISATION :
 TEMPERATURA DI UTILIZZAZIONE :

SUPPLY PRESSURE : 10 BAR MAX
 VORRATSDRUCK :
 PRESSION PNEUMATIQUE D'ALIMENTATION :
 PRESSIONE PNEUMATICA DI ALIMENTAZIONE :

NO STROKE LIMITER IN THE DEVICE
 KEIN HUBBEGRENZUNG IM GERÄT
 PAS DE LIMITATION DE COURSE DANS L'APPAREIL
 NESSUNA LIMITAZIONE DI CORSA NELL'APPARECCHIO

DETAIL OF PLATE
 EINZELHEITPLATTE
 DETAIL DE LA PLAQUE
 PARTICOLARE DI PIASTRA

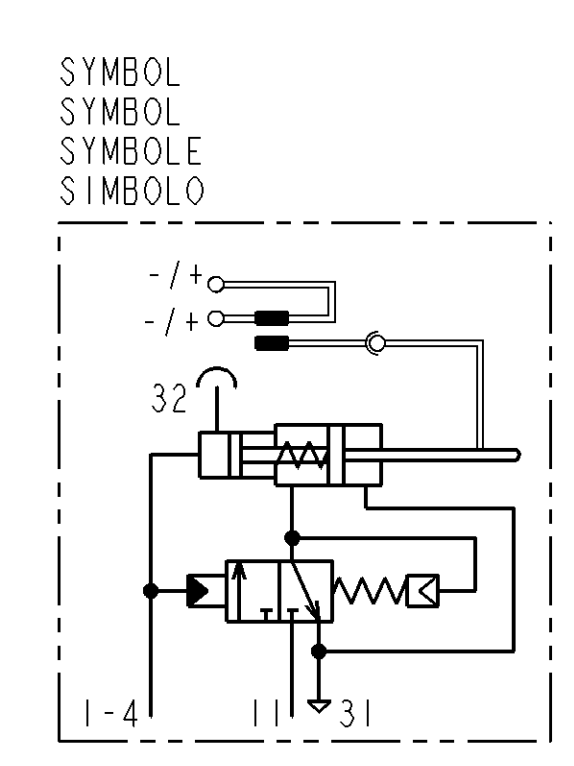
HUILE MINERALE
 MINERAL OIL
 HUILE MINERALE
 OLIO MINERALE



MARKING OF PORTS
 KENNZEICHNUNG DER ANSCHLUESSE
 MARQUAGE DES ORIFICES
 MARCATURA DEGLI ORIFIZI

11	AIR INLET VORRATSLAUFUNG ALIMENTATION AIR ALIMENTAZIONE ARIA
1-4	OIL INLET OELZUFLUSS ALIMENTATION HUILE ALIMENTAZIONE OLIO
31	AIR EXHAUST ENTLUEFTUNG ECHAPPEMENT SCARICO
32	BLEED SCREW ENTLUEFTUNGSSCHRAUBE VIS DE PURGE VITE DI SPURGO

LENGTH OF CABLE BETWEEN SENSOR AND ELECTRONICS KABELLANGE ZWISCHEN SENSOR UND ELEKTRONIK LONGUEUR DE CABLE ENTRE CAPTEUR ET ELECTRONIQUE LUGHEZZA DEL CAVO TRA SENSORE E CENTRALINA ELETTRONICA	10m MAX.	MEASURING PRINCIPLE MESSPRINZIP PRINCIPE DE MESURE PRINCIPIO DI MISURA	INDUCTIVE INDUKTIV INDUCTIF INDUTTIVO
SUPPLY VOLTAGE SPEISESPANNUNG TENSION D'ALIMENTATION TENSION D'ALIMENTAZIONE	PULSE IMPULS IMPULSION IMPULSO	OHMIC RESISTANCE OHMSCHER WIDERSTAND RESISTANCE OHMIQUE RESISTANZA OHMICO	72 Ω ± 5 %
PRECISION AFTER CALIBRATION GENAUIGKEIT NACH KALIBRIERUNG PRECISION APRES CALIBRAGE PRECISIONE DOPO CALIBRATURA	± 5 % FULL SCALE	CURRENT CONSUMPTION STROMAUFNAHME CONSUMATION DE COURANT ASSORBIMENTO DI CORRENTE	90mA MAX.



General Specifications: JED-334-0
 Further Technical Data: 970 051 428 0

Doc. Code: 035 | Sheets: 1 To 5

Copyright WABCO®
 Date: 2012-08-20 | Drawn: Rossard
 Checked: Goyet
 Expert: Lesoffre

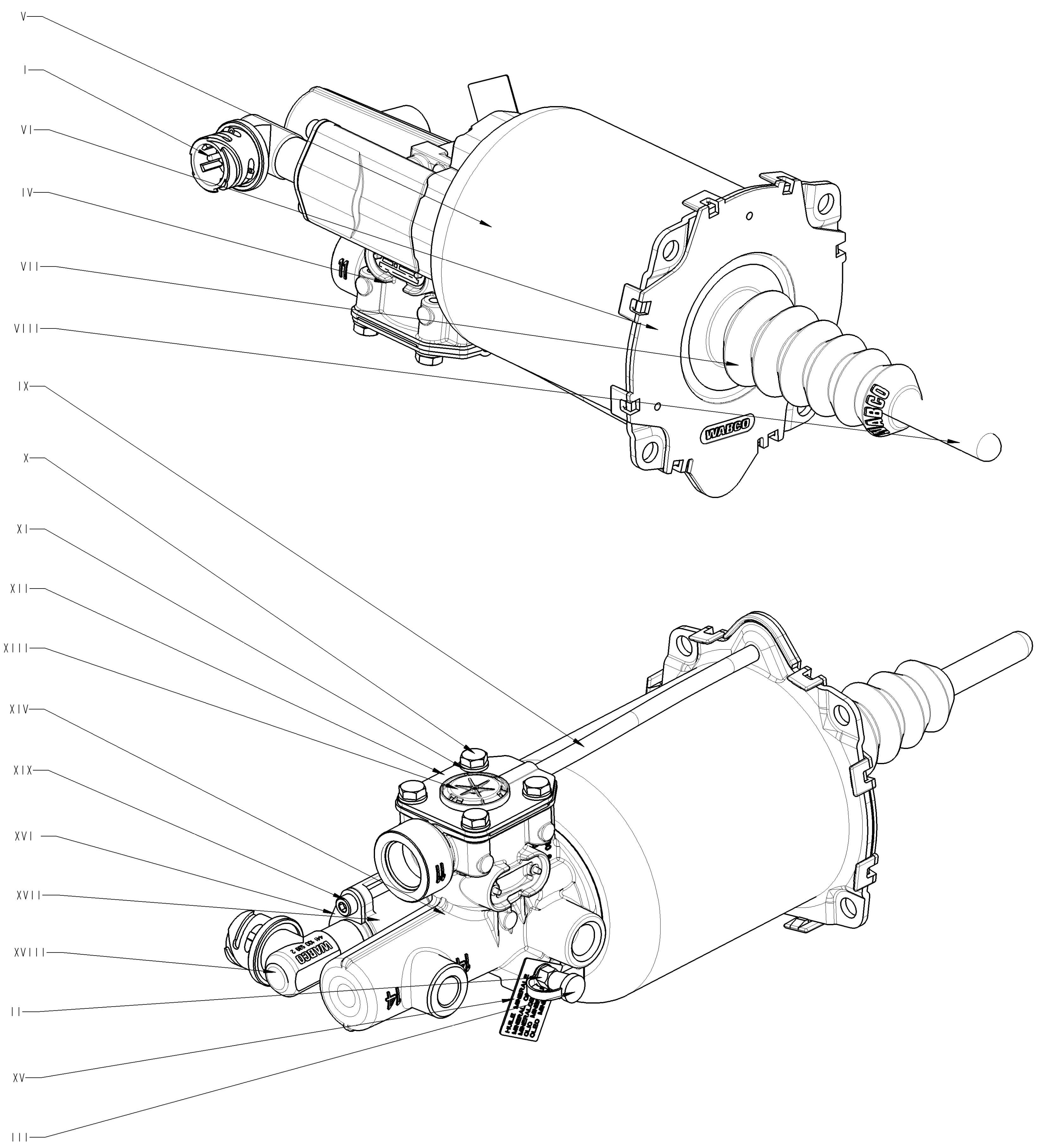
WABCO
 CLUTCH-SERVO
 KUPPLUNGSVERSTAERKER
 SERVO-DEBRAYAGE
 SERVO-FRIZIONE

Material No.: 970 051 466 0
 Date of first issue: 2007-11-07
 Doc. Code: 005 | Language: ML | Sheet: 1/2

ECR No.: 151813 | Revision: 1x | Tech. Resp.: A | 5630
 Replaces for: 884 011 727 0

Tapped Holes acc. JED-152 / ISO 4039
 1) Tolerance Class Applied Crossmarked

Non è permesso copiare o tradurre questo documento, né utilizzare il contenuto o i dati contenuti in esso, senza permesso scritto dalla WABCO. Il presente documento è riservato ai clienti WABCO. Toute réimpression ou reproduction de ce document, toute exploitation ou communication de son contenu sans autorisation écrite de la WABCO est formellement interdite. Toute utilisation non autorisée de ce document est formellement interdite. No es permitido copiar o traducir este documento, ni utilizar el contenido o los datos contenidos en él, sin el consentimiento escrito de WABCO. Este documento es reservado para los clientes de WABCO.



ITEM REPERE	MATERIAL MATIERE	SURFACE PROTECTION PROTECTION DE SURFACE	
I	JED-570-885 Cu-Zn	JED-570-665	COATING Ag
II	JED-020-M STEEL	JED-256-0	PASSIVAT. Zn-ALLOY-STEEL
III	JED-670 TPE, 75 SHORE A, -40°C	JED-240-5	PAINT. STEEL PART
IV	JED-077-1 HIGH-GRADE ALUMINIUM	JED-007-1	Anodic Oxidation
V	JED-021M3 Thin Sheet,unalloyed Steel	JED-240-5	Paint, steel parts
VI	PP 30% GF BLACK		
VII	JED-376-4 EPDM, 60 IRHD, -40°C		
VIII	JED-626-1 High-Strenth. Free-Cut.Steel	JED-256	PASSIVAT. Zn-ALLOY-STEEL
IX	PA 12 PHLV BLACK		
X	JED-051M4 STEEL SCREWS&NUTS,CL.8.8	JED-378	Inorg.Coating ZN/AL
XI	JED-048M1 STEEL STRIP FOR SPRINGS	JED-378	Inorg.Coating ZN/AL
XII	JED-021M1 Thin sheet,unalloyed steel	JED-256	PASSIVAT. Zn-ALLOY-STEEL
XIII	JED-534-2 PA 6.6, 30% GLASS FIBRES		
XIV	JED-029M1 (A) AL-PRESSURE DIE CASTING	JED-259-1 (A)	Chromating of Al-alloys
XV	JED-077-1 HIGH-GRADE ALUMINIUM		
XVI	JED-021M1 Thin sheet,unalloyed steel	JED-256	PASSIVAT. Zn-ALLOY-STEEL
XVII	JED-029M1 (A) AL-PRESSURE DIE CASTING	JED-259-1 (A)	Chromating of Al-alloys
XVIII	PA 6.6 GF BLACK		
XIX	JED-051M4 STEEL SCREWS&NUTS,CL.8.8	JED-256	PASSIVAT. Zn-ALLOY-STEEL

General Specifications: JED-334-0		Copyright WABCO®	
Further Technical Data: 970 051 428 0		Date	Signature
Doc. Code: 035	Sheets: 1 To 5	2012-08-20	Rossard
General Tolerances JED-261		Checked	Goyet
Range of Nominal Dimensions (± mm)		Expert Lesoffre	
Class 1)	< 50	> 50 < 180	> 180 < 400
Fine	0,5	1,0	1,5
Medium	1,0	2,0	3,0
Coarse	2,0	3,5	5,0
Tapped Holes acc. JED-192 / ISO 4039		1)	
1) Tolerance Class Applied Crossmarked			

Mas	Scale	Material No.		Date of first issue
2,8	1,000	970 051 466 0		2007-11-07
Size	CAD System	Doc.Code	Language	Sheet
A 1	Pro/E	005	ML	2/2
ECN No.	Revision	Techn. Resp.	Replacement for	
151813	4x A	5630	884 011 727 0	

100mm

Toute communication ou reproduction de ce document, toute exploitation ou communication de son contenu sans autorisation, sauf autorisation écrite préalable de WABCO, est formellement interdite. Toute utilisation non autorisée sera poursuivie devant les tribunaux.

All rights reserved. Any reproduction, use, distribution or communication of this document without the written permission of WABCO is strictly prohibited. Any unauthorized use will be prosecuted.

Alle Rechte sind vorbehalten. Nachdruck, Vervielfältigung und Verbreitung, auch auszugsweise, ist ohne schriftliche Genehmigung von WABCO.

This document contains confidential information. Any disclosure, reproduction or use of this document without the written permission of WABCO is strictly prohibited.