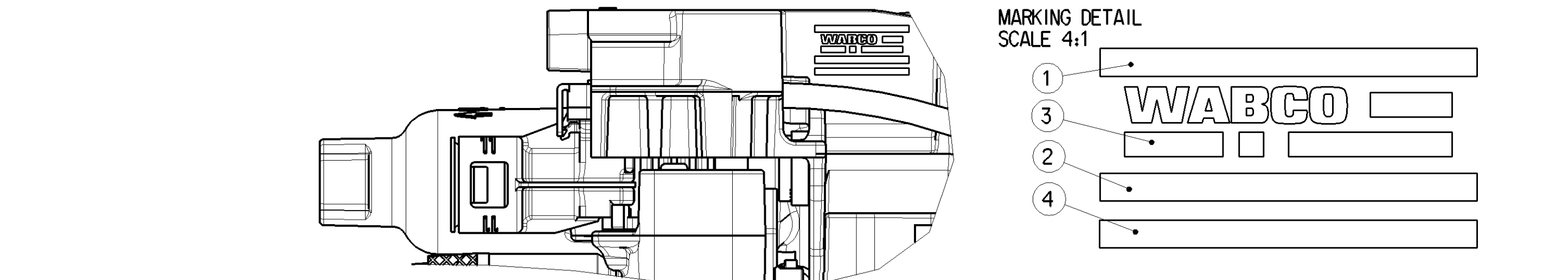
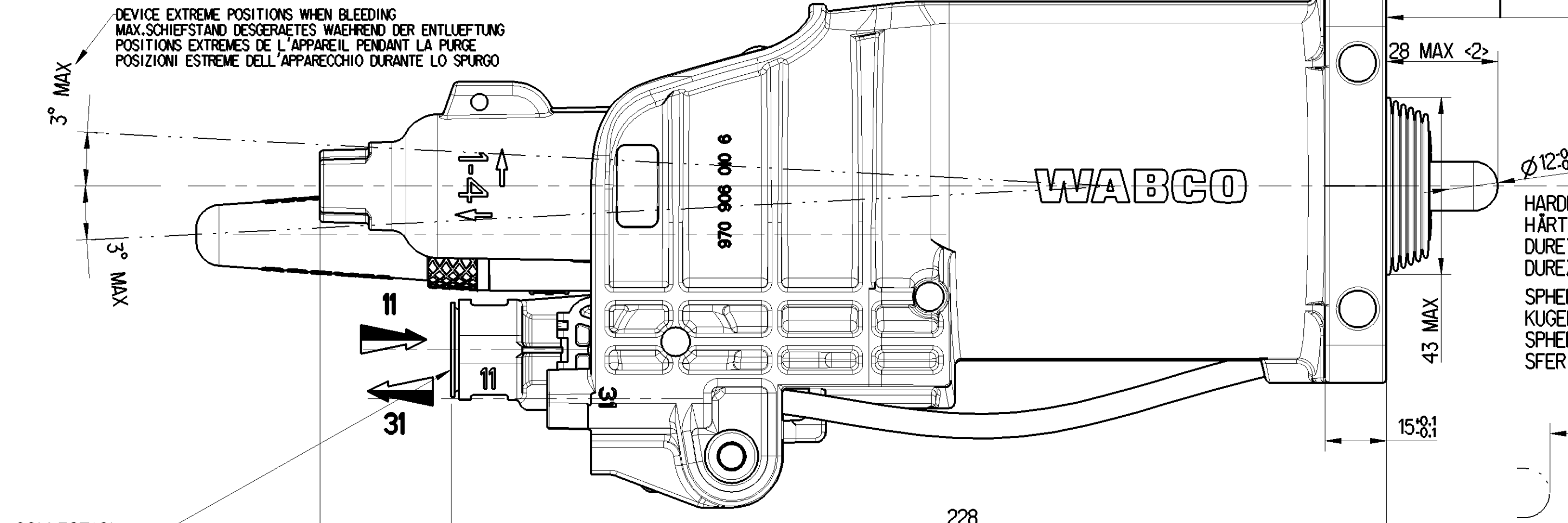


Non è permesso copiare o riprodurre questo documento, né allungare il copyright o ristampare, senza permesso scritto dalla WABCO. Qualsiasi riproduzione non autorizzata sarà perseguita legalmente. Toute réimpression ou utilisation non autorisée sans la permission écrite de la WABCO est formellement interdite. Toute réimpression ou utilisation non autorisée sans la permission écrite de la WABCO est formellement interdite.

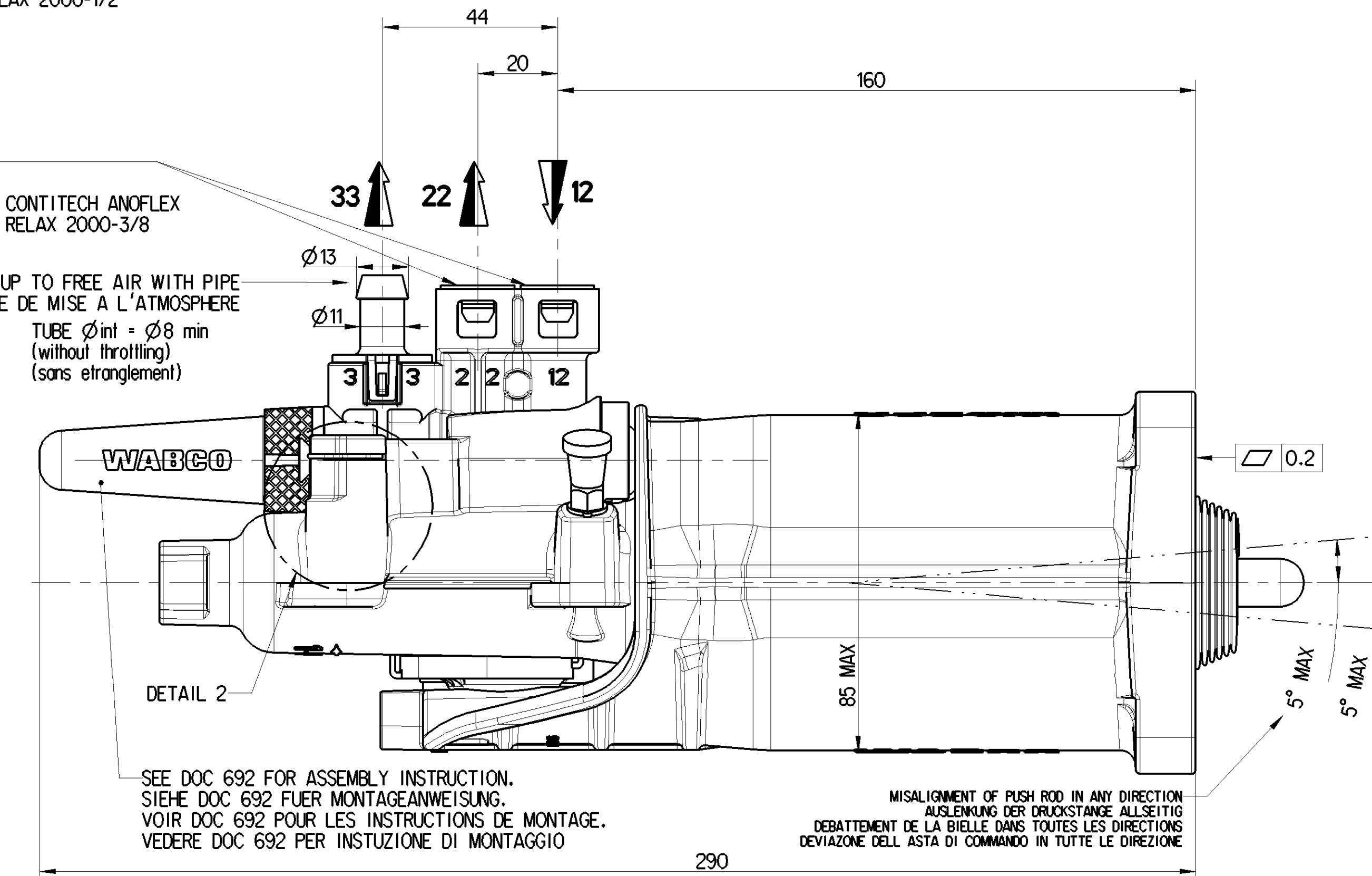


**WORKING RANGE**  
**ARBEITSBEREICH**  
**ZONE DE TRAVAIL**  
**ZONA DI LAVORO**



CONNECTION  
 ANSCHLUESSE  
 RACCORD CONTITECH ANOFLEX  
 RACCORDI RELAX 2000-1/2

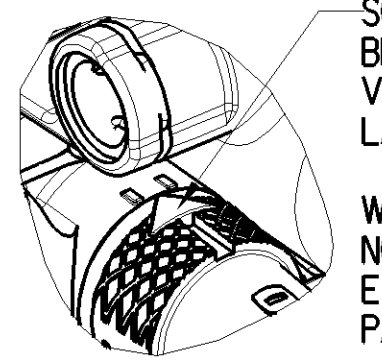
CONNECTION  
 ANSCHLUESSE  
 RACCORD CONTITECH ANOFLEX  
 RACCORDI RELAX 2000-3/8



UP TO FREE AIR WITH PIPE  
 POUR TUBE DE MISE A L'ATMOSPHERE  
 TUBE  $\phi_{int} = \phi_{8 min}$   
 (without throttling)  
 (sans étranglement)

SEE DOC 692 FOR ASSEMBLY INSTRUCTION.  
 SIEHE DOC 692 FÜR MONTAGEANWEISUNG.  
 VOIR DOC 692 POUR LES INSTRUCTIONS DE MONTAGE.  
 VEDERE DOC 692 PER INSTRUZIONI DI MONTAGGIO

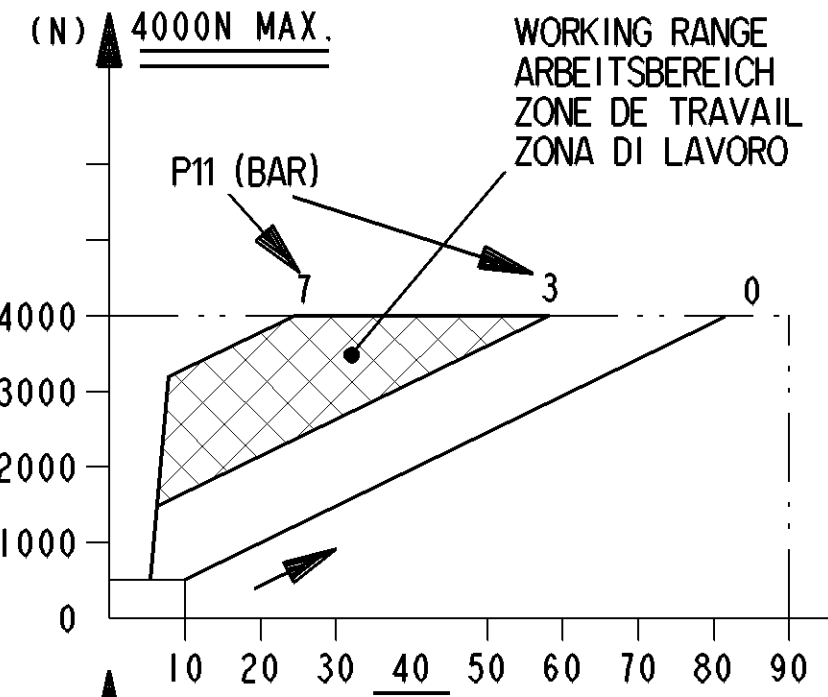
MISALIGNMENT OF PUSH ROD IN ANY DIRECTION  
 AUSLENKUNG DER DRUCKSTANGE ALLSEITIG  
 DEBATEMENT DE LA BIELLE DANS TOUTES LES DIRECTIONS  
 DEVIATIONE DELL'ASTA DI COMANDO IN TUTTE LE DIREZIONI



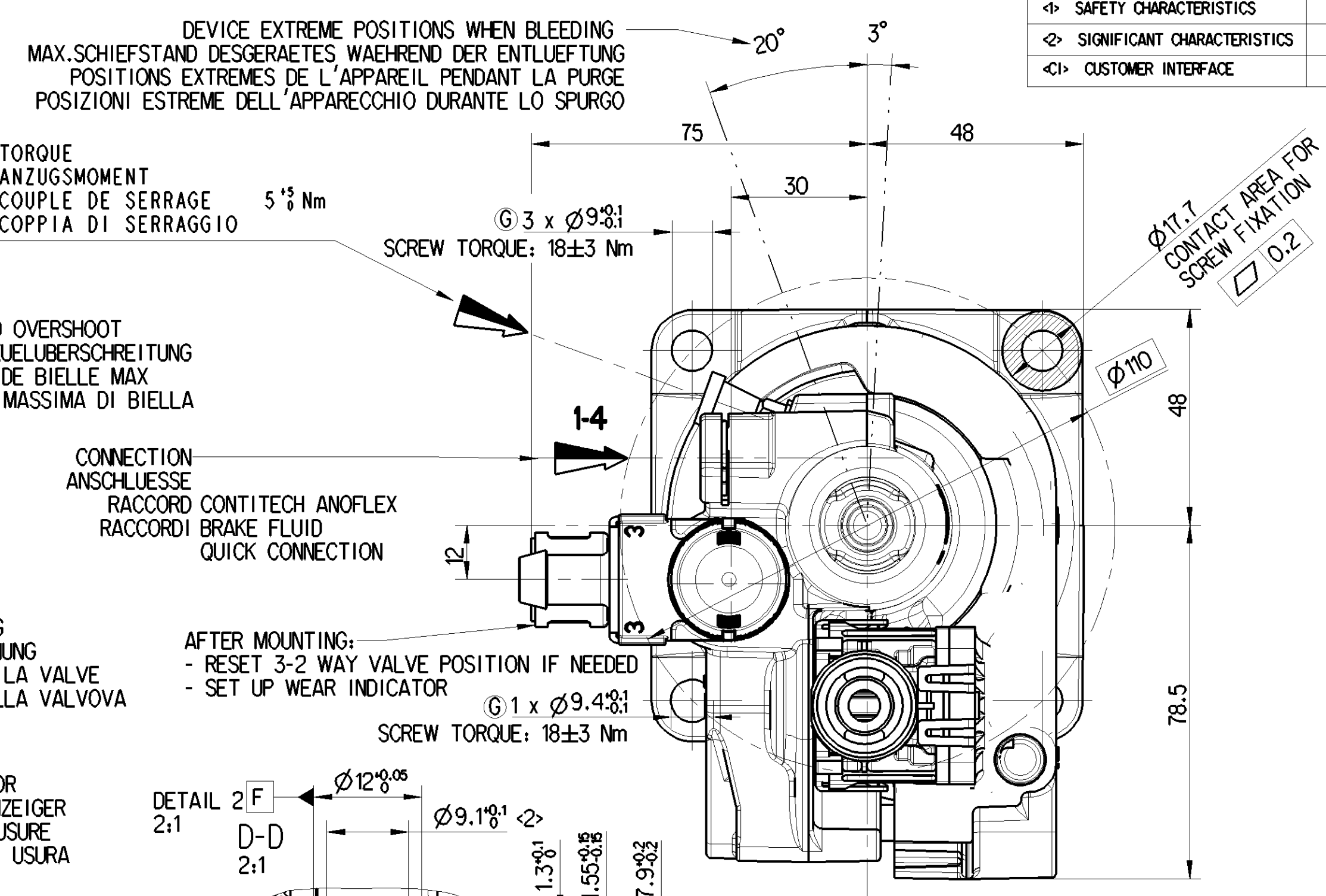
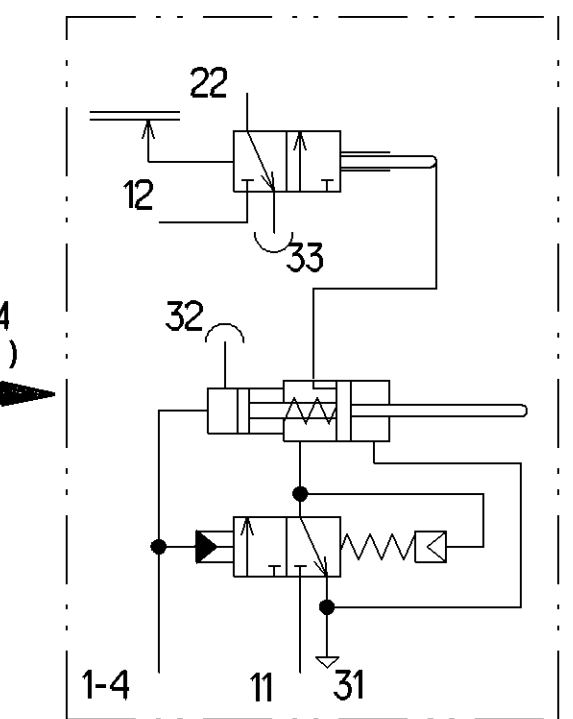
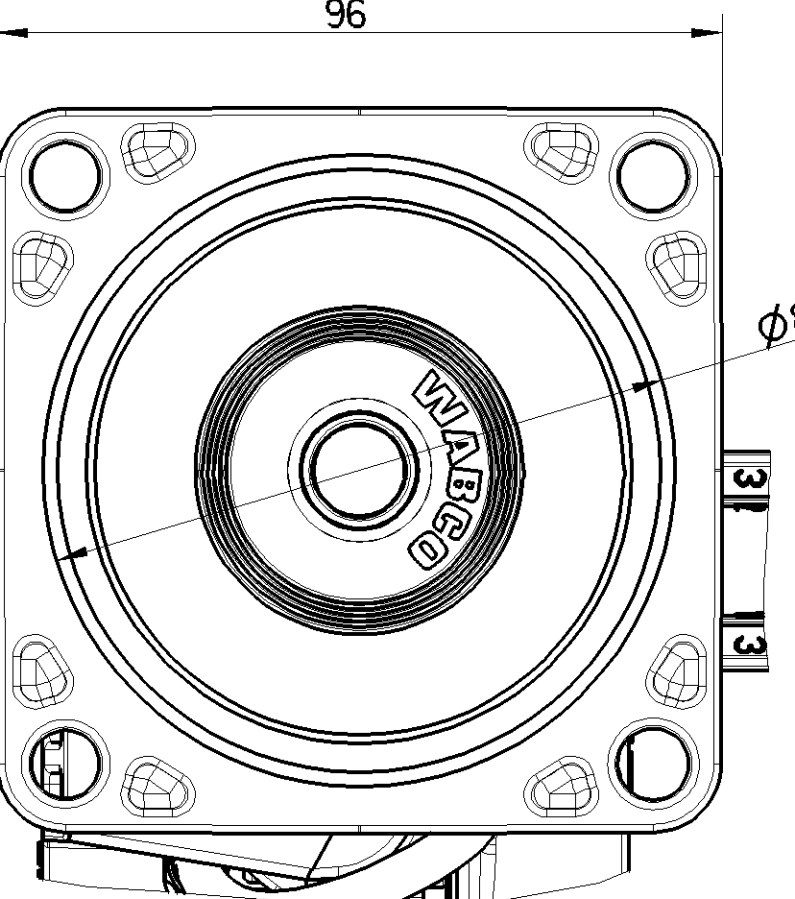
SCREW THE CAP UNTIL LOCATE THE ARROW  
 BETWEEN THE 2 MARKS  
 VISSER LE BOUCHON JUSQU'À POSITIONNER  
 LA FLECHE ENTRE LES 2 MARQUES

WABCO DELIVERY STATE: ARROW COULD  
 NOT BE LOCATED BETWEEN THE TWO MARKS  
 ETAT DE LIVRAISON DE WABCO: LA FLECHE N'EST  
 PAS FORCEMENT SITUE ENTRE LES DEUX MARQUES

| MARKING INFORMATION |   |
|---------------------|---|
| NR.                 | TEXT  |
| 1                   | CUSTOMER N°<br>KUNDEN N°<br>N° CLIENT<br>N° CLIENTE   |
| 2                   | WABCO IDENTIFICATION NUMBER<br>WABCO IDENTIFICATION NUMBER<br>NUMERO D'IDENTIFICATION WABCO<br>NUMERO D'IDENTIFICAZIONE WABCO |
| 3                   | DATE  |
| 4                   | CUSTOMER NAME<br>KUNDEN NAME<br>NOM CLIENT<br>NOME CLIENTE  |



**FORCE OUTPUT**  
**KRAFT AN DER KOLBENSTANGE**  
**EFFORT A LA TIGE DE COMMANDE**  
**SPFORZO ALL ALBERO DI COMANDO**



DEVICE EXTREME POSITIONS WHEN BLEEDING  
 MAX.SCHIEFSTAND DESGERAETES WAEHREND DER ENTLUEFTUNG  
 POSITIONS EXTREMES DE L'APPAREIL PENDANT LA PURGE  
 POSIZIONI ESTREME DELL'APPARECCHIO DURANTE LO SPURGO

Ø 8 h13 TORQUE  
 ANZUGSMOMENT  
 COUPLE DE SERRAGE 5<sup>±5</sup> Nm  
 COPPIA DI SERRAGGIO

SCREW TORQUE: 18±3 Nm

| S |                             | Q |
|---|-----------------------------|---|
| ↔ | SAFETY CHARACTERISTICS      | 0 |
| ↔ | SIGNIFICANT CHARACTERISTICS | 5 |
| ↔ | CUSTOMER INTERFACE          | 0 |

Ø11.7 CONTACT AREA FOR  
 SCREW FIXATION  
 0.2

MAX PUSH ROD OVERSHOOT  
 MAXIMALE PLEUELÜBERSCHREITUNG  
 DEPASSEMENT DE BIELLE MAX  
 SUPERAMENTO MASSIMA DI BIELLA

CONNECTION  
 ANSCHLUESSE  
 RACCORD CONTITECH ANOFLEX  
 RACCORDI BRAKE FLUID  
 QUICK CONNECTION

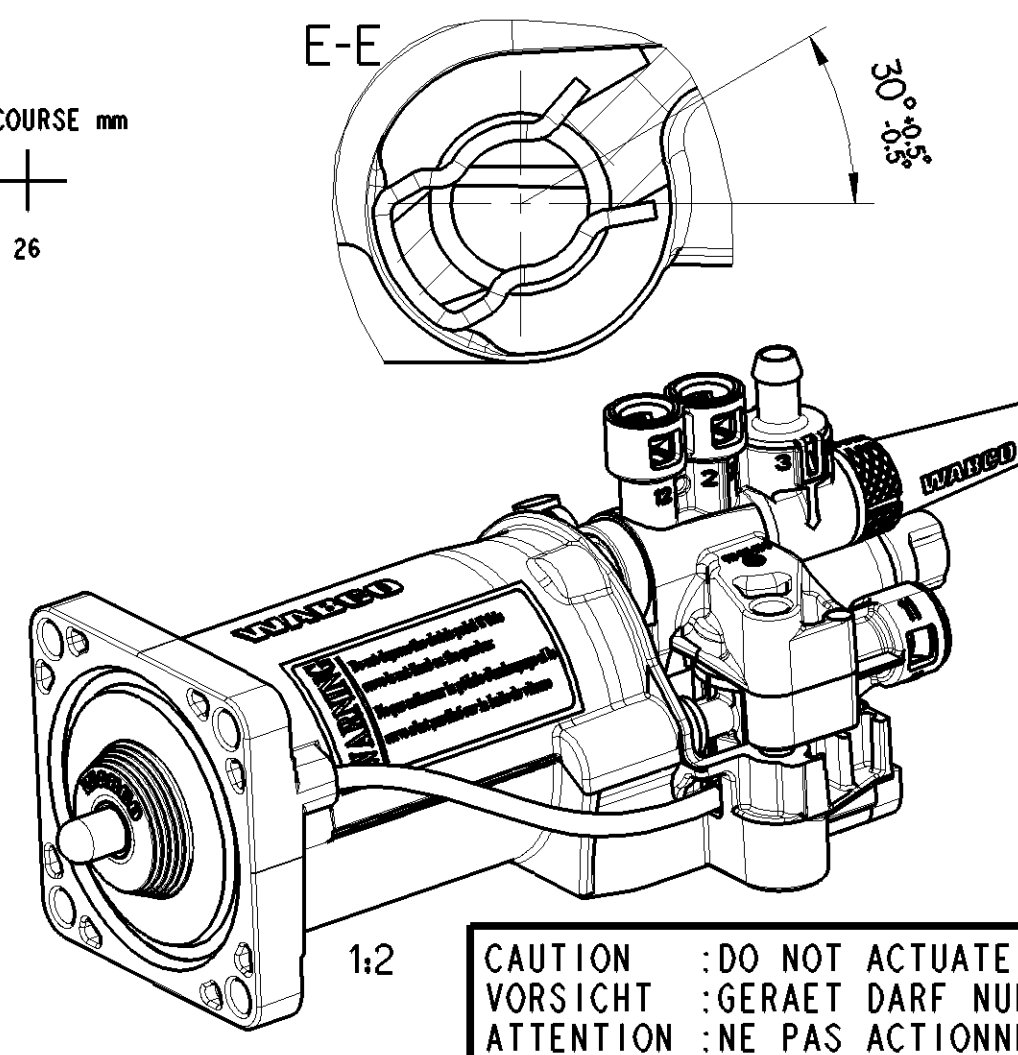
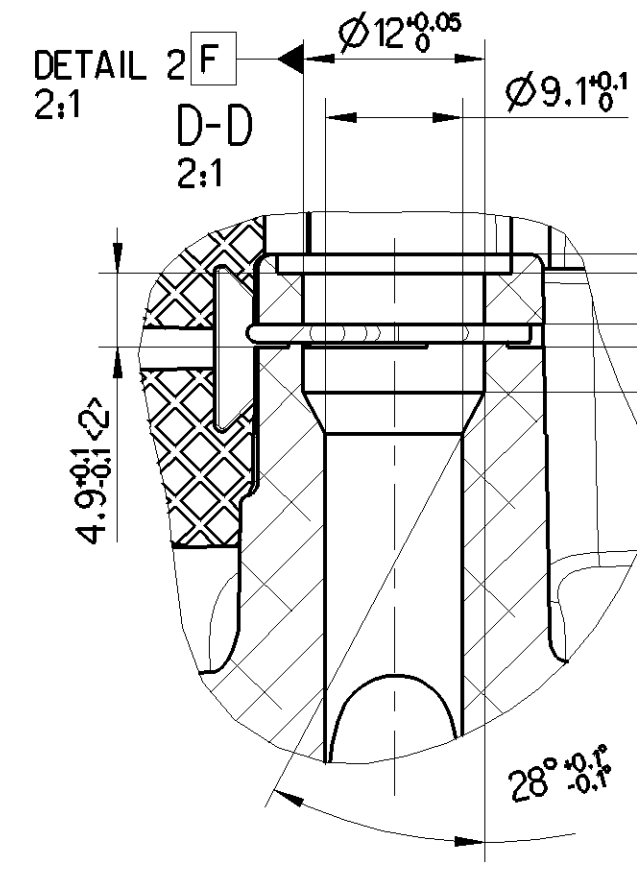
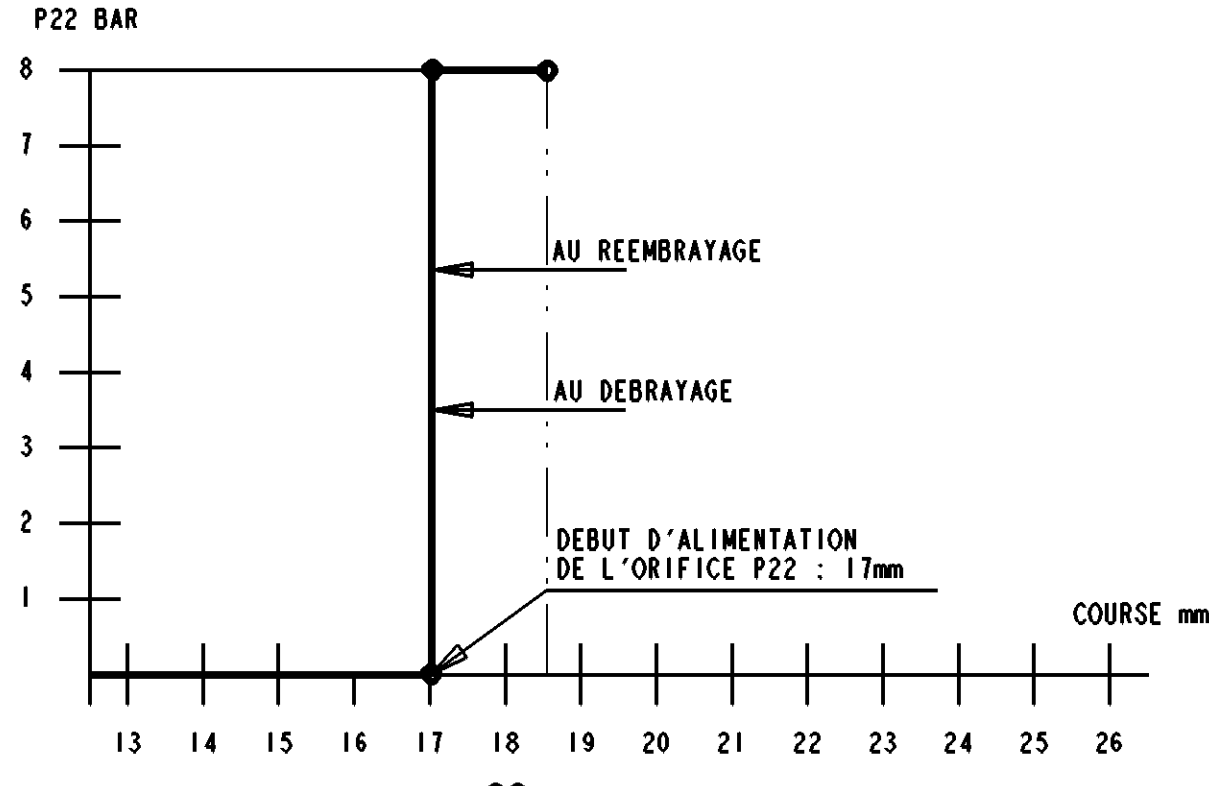
AFTER MOUNTING:  
 - RESET 3-2 WAY VALVE POSITION IF NEEDED  
 - SET UP WEAR INDICATOR

SCREW TORQUE: 18±3 Nm

VALVE OPENING  
 VENTILEROEFFNUNG  
 OUVERTURE DE LA VALVE  
 APERTURA DELLA VALVOVA

WEAR INDICATOR  
 VERSCHLEISSANZEIGER  
 INDICATEUR D'USURE  
 INDOCATORE DI USURA

NEW CLUTCH POSITION  
 KUPPLUNG IN NEUEN ZUSTAND  
 POSITION EMBRAYAGE NEUF  
 FRIZIONE NUOVA

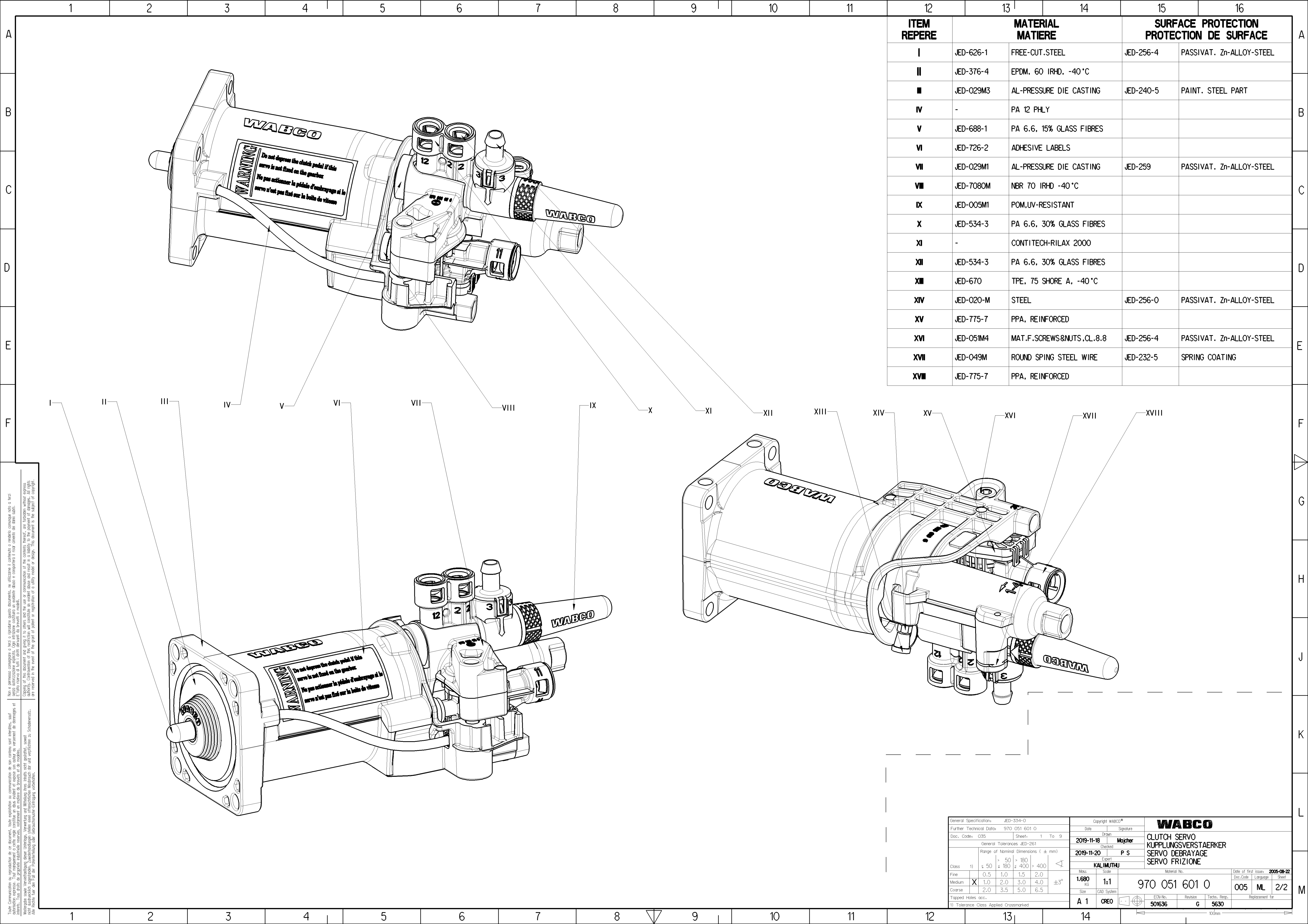


| OIL VOLUME INPUT<br>NUTZBARES HYDRAULISCHES VOLUMEN<br>VOLUME D'huile ABSORBE<br>VOLUME D'OLIO ASSORBITO   |   | $V=(SH \times C)+K$ |                       |
|--|---|---------------------|-----------------------|
| K  | ABSORPTION AT AUFNAHME BEI ABSORPTION A ASSORBIMENTO A  | 90 BAR              | FOR FUER POUR PER C=0 |
| SH   | HYDRAULIC SECTIONAL AREA<br>HYDRAULISCHER QUERSCHNITT<br>SECTION HYDRAULIQUE<br>SEZIONE IDRAULICO |                     | 4.89 cm <sup>2</sup>  |
| C  | GEAR DISENGAGING STROKE<br>AUSKUPPLUNGSHUB<br>COURSE DE DEBRAYAGE<br>CORSO DI DISINNESTO          |                     |                       |
| HYDRAULIC FLUID : BRAKE FLUID<br>HYDRAULIKFLUESSIGKEIT : BREMSFLUESSIGKEIT SAE<br>FLUIDE HYDRAULIQUE : GLYCERO ALCOOLIQUE J 1703<br>FLUIDO IDRAULICO : LIQUIDO PER FRENI |   |                     |                       |
| THERMAL RANGE<br>THERMISCHER ANWENDBEREICH : -30°C..+100°C<br>TEMPERATURE D'UTILISATION<br>TEMPERATURA DI UTILIZZAZIONE  |   |                     |                       |
| SUPPLY PRESSURE<br>VORRATSDRUCK : 10 BAR MAX<br>PRESSION PNEUMATIQUE D'ALIMENTATION<br>PRESSIONE PNEUMATICA DI ALIMENTAZIONE   |   |                     |                       |
| NO STROKE LIMITER IN THE DEVICE<br>KEIN HUBBEGRENZUNG IM GERAET<br>PAS DE LIMITATION DE COURSE DANS L'APPAREIL<br>NESSUNA LIMITAZIONE DI COURSE NELL'APPARECCHIO         |   |                     |                       |

**CAUTION** : DO NOT ACTUATE THE DEVICE IF NOT FITTED ON ITS MOUNTING BRACKET  
**VORSICHT** : GERAET DARF NUR IM EINGEBAUTEN ZUSTAND BETAETIGT WERDEN  
**ATTENTION** : NE PAS ACTIONNER L'APPAREIL S'IL N'EST PAS FIXE SUR SON SUPPORT  
**ATTENZIONE** : NON METTERE IN FUNZIONE L'APPARECCHIO SE NON E' FISSATO AL SUPPORTO

| MARKING OF PORTS<br>KENNZEICHNUNG DER ANSCHLUESSE<br>MARCAGE DES ORIFICES<br>MARCATURA DEGLI ORIFIZI |   | DELIVERY<br>AUSGESTEUERTE LUFT<br>UTILISATION<br>UTILIZZAZIONE |   |
|--|---|--|---|
| 11   | AIR INLET<br>VORRATSLEITUNG<br>ALIMENTATION AIR<br>ALIMENTAZIONE ARIA | 31   | AIR EXHAUST<br>ENTLUEFTUNG<br>ECHAPPAMENT<br>SCARICO                  |
| 12   | OIL INLET<br>OELZUFUSS<br>ALIMENTAZIONE HUILE<br>ALIMENTAZIONE OLIO   | 32   | BLEED SCREW<br>ENTLUEFTUNGSSCHRAUBE<br>VIS DE PURGE<br>VITE DI SPURGO |

| General Specification: JED-334-O       |  |  | Copyright WABCO                     |  |  |
|--|--|--|-------------------------------------|--|--|
| Further Technical Data: 970 051 601 0  |  |  | Date: 2019-11-18                    |  |  |
| Doc. Code: 035                         |  |  | Signature: Mojer                    |  |  |
| Sheet: 1 To 9                          |  |  | Checked: P S                        |  |  |
| General Tolerances JED-261             |  |  | Range of Nominal Dimensions (± mm)  |  |  |
| Class 1)                               |  |  | ≤ 50 > 50 > 180 > 180 > 400 > 400   |  |  |
| Fine                                   |  |  | 0.5 1.0 1.5 2.0 ±3°                 |  |  |
| Medium                                 |  |  | X 1.0 2.0 3.0 4.0 ±3°               |  |  |
| Coarse                                 |  |  | 2.0 3.5 5.0 6.5                     |  |  |
| Tapped Holes acc.                      |  |  | A 1 CREO                            |  |  |
| 1) Tolerance Class Applied Crossmarked |  |  | Echt-No. 501636                     |  |  |
|  |  |  | Revision: 2x                        |  |  |
|  |  |  | Tech. Resp. 5630                    |  |  |
|  |  |  | Material No. 970 051 601 0          |  |  |
|  |  |  | Date of first issue: 2005-08-22     |  |  |
|  |  |  | Doc. Code Language Sheet 005 ML 1/2 |  |  |
|  |  |  | Replacement for                     |  |  |



| ITEM REPERE | MATERIAL MATIERE | SURFACE PROTECTION PROTECTION DE SURFACE |                                    |
|-------------|------------------|--|------------------------------------|
| I           | JED-626-1        | FREE-CUT. STEEL                          | JED-256-4 PASSIVAT. Zn-ALLOY-STEEL |
| II          | JED-376-4        | EPDM, 60 IRHD, -40 °C                    |                                    |
| III         | JED-029M3        | AL-PRESSURE DIE CASTING                  | JED-240-5 PAINT. STEEL PART        |
| IV          | -                | PA 12 PLY                                |                                    |
| V           | JED-688-1        | PA 6.6, 15% GLASS FIBRES                 |                                    |
| VI          | JED-726-2        | ADHESIVE LABELS                          |                                    |
| VII         | JED-029M1        | AL-PRESSURE DIE CASTING                  | JED-259 PASSIVAT. Zn-ALLOY-STEEL   |
| VIII        | JED-7080M        | NBR 70 IRHD -40 °C                       |                                    |
| IX          | JED-005M1        | POM,UV-RESISTANT                         |                                    |
| X           | JED-534-3        | PA 6.6, 30% GLASS FIBRES                 |                                    |
| XI          | -                | CONTITECH-RILAX 2000                     |                                    |
| XII         | JED-534-3        | PA 6.6, 30% GLASS FIBRES                 |                                    |
| XIII        | JED-670          | TPE, 75 SHORE A, -40 °C                  |                                    |
| XIV         | JED-020-M        | STEEL                                    | JED-256-0 PASSIVAT. Zn-ALLOY-STEEL |
| XV          | JED-775-7        | PPA, REINFORCED                          |                                    |
| XVI         | JED-051M4        | MAT.F.SCREWS&NUTS,CL.8.8                 | JED-256-4 PASSIVAT. Zn-ALLOY-STEEL |
| XVII        | JED-049M         | ROUND SPING STEEL WIRE                   | JED-232-5 SPRING COATING           |
| XVIII       | JED-775-7        | PPA, REINFORCED                          |                                    |

Tutti i diritti sono riservati. È vietata espressamente la ristampa o l'uso non autorizzato senza permesso scritto dalla WABCO. Tutti i diritti sono riservati. È vietata espressamente la ristampa o l'uso non autorizzato senza permesso scritto dalla WABCO. All rights reserved. No part of this document may be reproduced or transmitted in any form or by any means electronic or mechanical, including photocopying and recording, or by any information storage or retrieval system, except as may be permitted in writing by WABCO. All rights reserved. No part of this document may be reproduced or transmitted in any form or by any means electronic or mechanical, including photocopying and recording, or by any information storage or retrieval system, except as may be permitted in writing by WABCO.

|  |                                |  |                  |
|--|--------------------------------|--|------------------|
| General Specification: JED-334-0       | Copyright WABCO®               | <b>WABCO</b>   |                  |
| Further Technical Data: 970 051 601 0  | Date: 2019-11-18               | CLUTCH SERVO<br>KUPPLUNGSVERSTÄRKER<br>SERVO DEBRAYAGE<br>SERVO FRIZIONE |                  |
| Doc. Code: 035                         | Sheet: 1 To 9                  | Checked: Mojcher   | Doc. Code: 005   |
| General Tolerances JED-261             |                                | Expert: P S  | Language: ML     |
| Range of Nominal Dimensions ( ± mm)    |                                | Date of first issue: 2005-09-22  |                  |
| Class                                  | 1) ≤ 50 > 50 > 180 > 180 > 400 | Mass: 1.680 kg   | Doc. Code: 005   |
| Fine                                   | 0.5 1.0 1.5 2.0                | Scale: 1:1   | Language: ML     |
| Medium                                 | 1.0 2.0 3.0 4.0                | Size: A 1  | Sheet: 2/2       |
| Coarse                                 | 2.0 3.5 5.0 6.5                | CAD System: CREO   |                  |
| Tapped Holes acc.                      |                                | ECN-No.: 501636  | Revision: 6      |
| 1) Tolerance Class Applied Crossmarked |                                | Techn. Resp.: 5630   | Replacement for: |