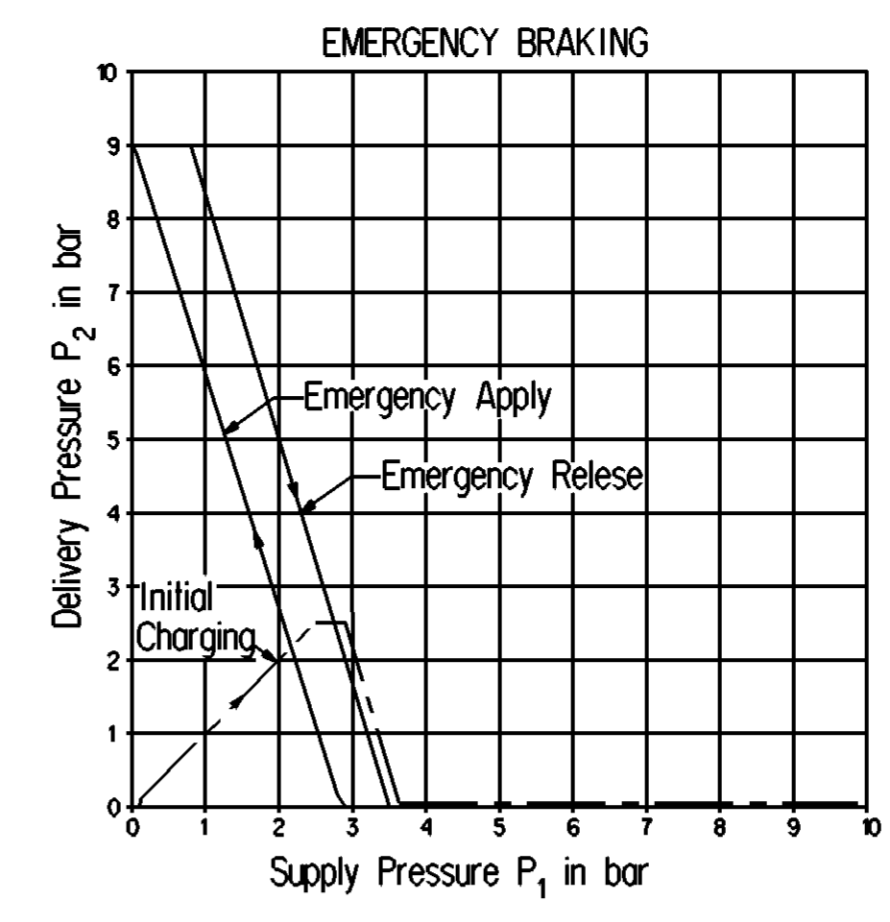
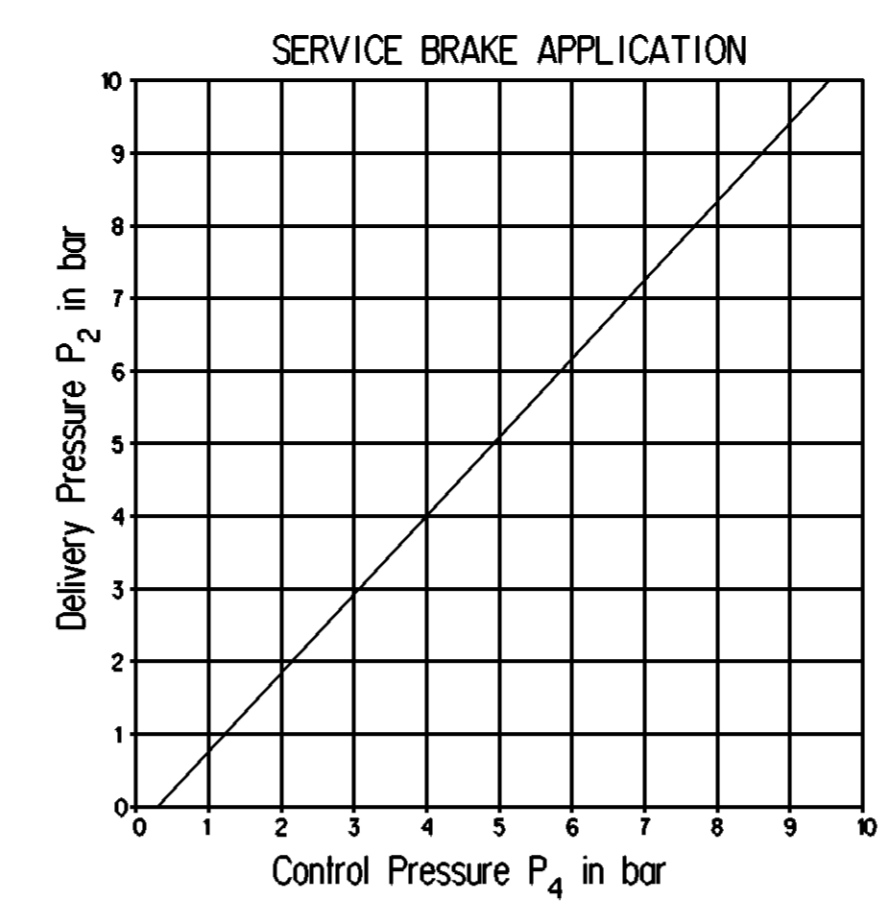
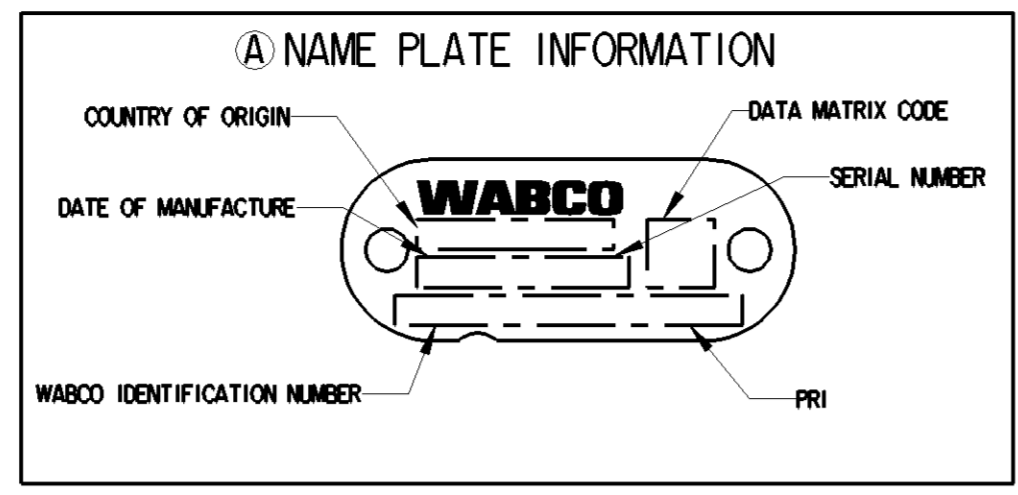
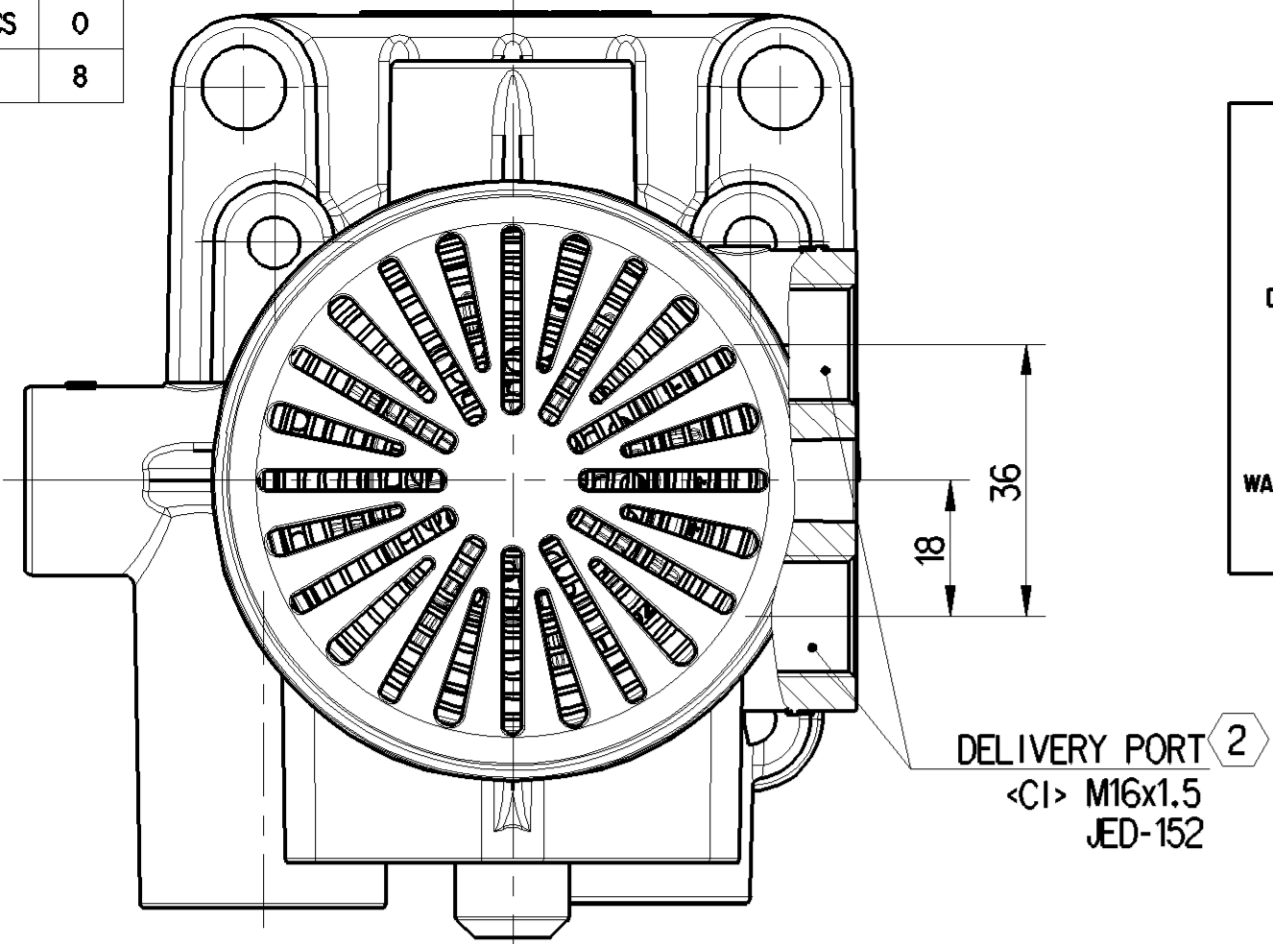
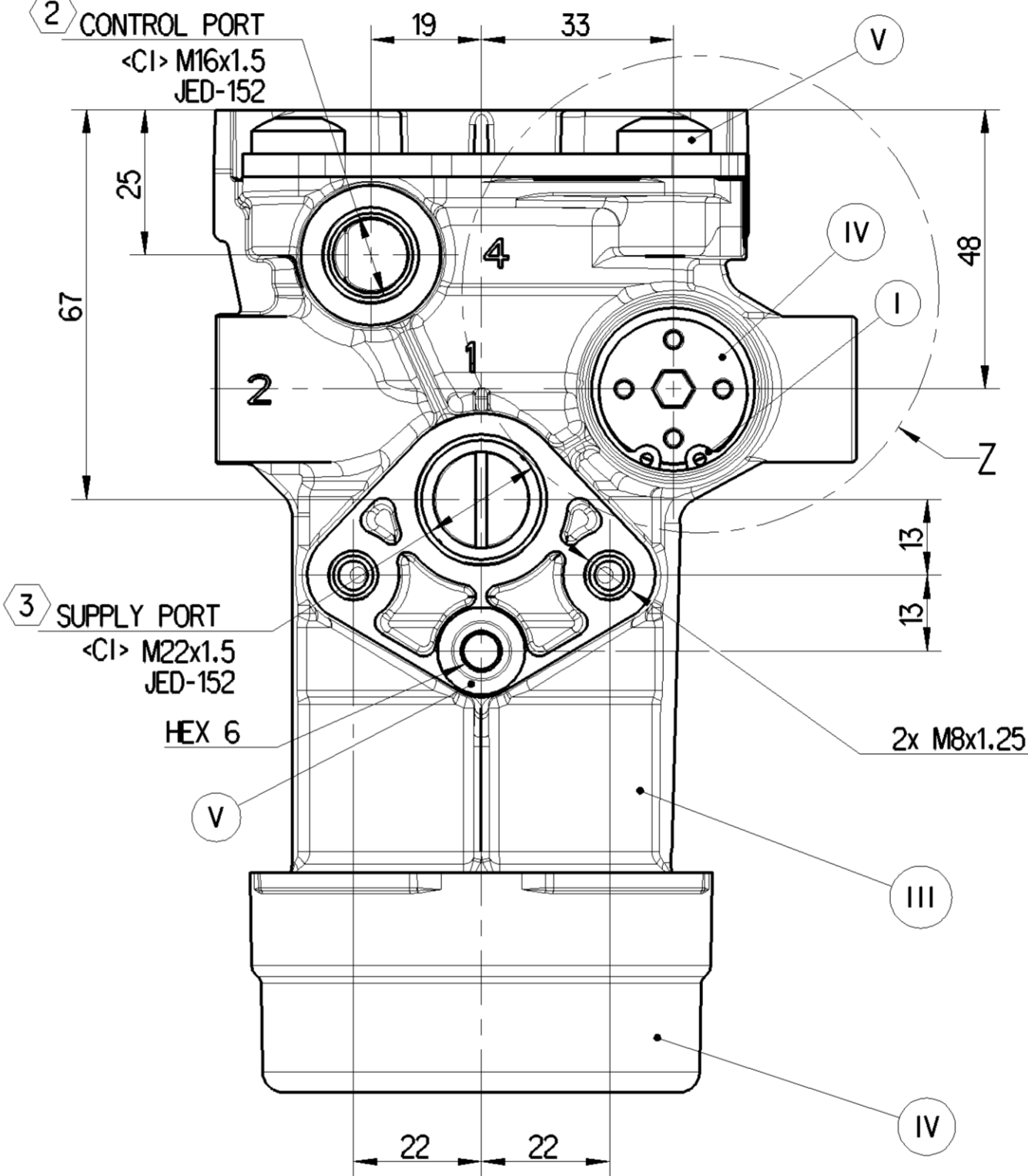
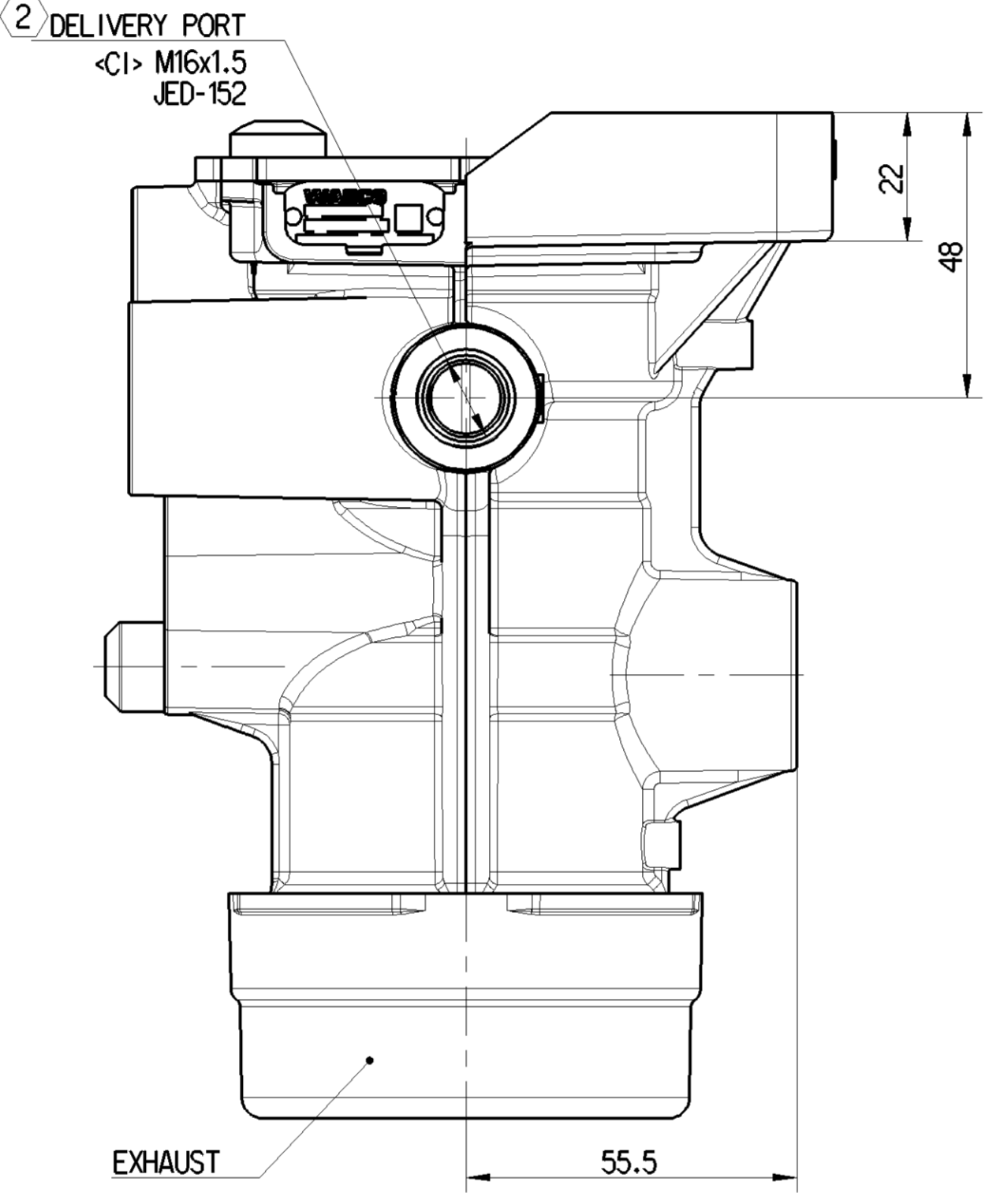
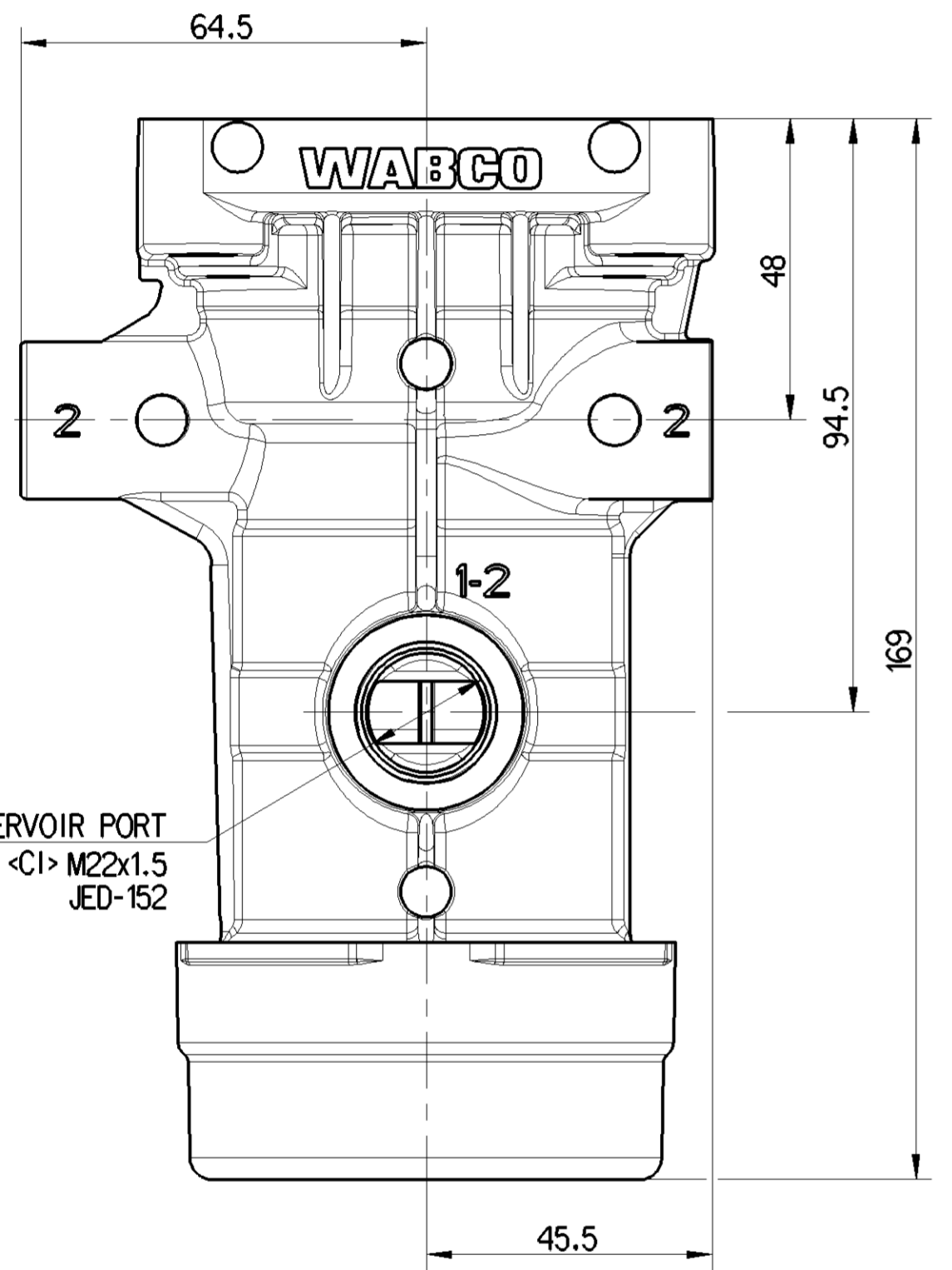


|                                 |   |
|---------------------------------|---|
| <1> SAFETY CHARACTERISTICS      | 0 |
| <2> SIGNIFICANT CHARACTERISTICS | 0 |
| <C1> CUSTOMER INTERFACE         | 8 |



|                                      |   |                |
|--------------------------------------|---|----------------|
| WORKING MEDIUM                       | AIR   |                |
| THERMAL RANGE OF APPLICATION         | -40° TO +65°C   |                |
| SHORT TERM RESISTANCE TO HEAT        | MAX. 1h AT 110°C  |                |
| NOMINAL WORKING PRESSURE             | 9 bar   |                |
| MAXIMUM WORKING PRESSURE             | 10 bar  |                |
| FILLING CRACK-OFF                    | 0.5 bar MAX.  |                |
| RELAY RATIO                          | >1  |                |
| CRACK-OFF PRESSURE (WITHOUT PREDOM)  | 0.3 bar MAX. (+65°C TO -20°C)<br>0.35 bar MAX. (-20°C TO -40°C) |                |
| INSTALLATION POSITION                | VERTICAL ±60° ALLOWED   |                |
| PORT DESIGNATION                     | 1   | SUPPLY PORT    |
|                                      | 1-2   | RESERVOIR PORT |
|                                      | 2 (3x)  | DELIVERY PORT  |
|                                      | 4   | CONTROL PORT   |
| TIGHTENING TORQUE FOR MOUNTING BOLTS | 45±2 Nm   |                |

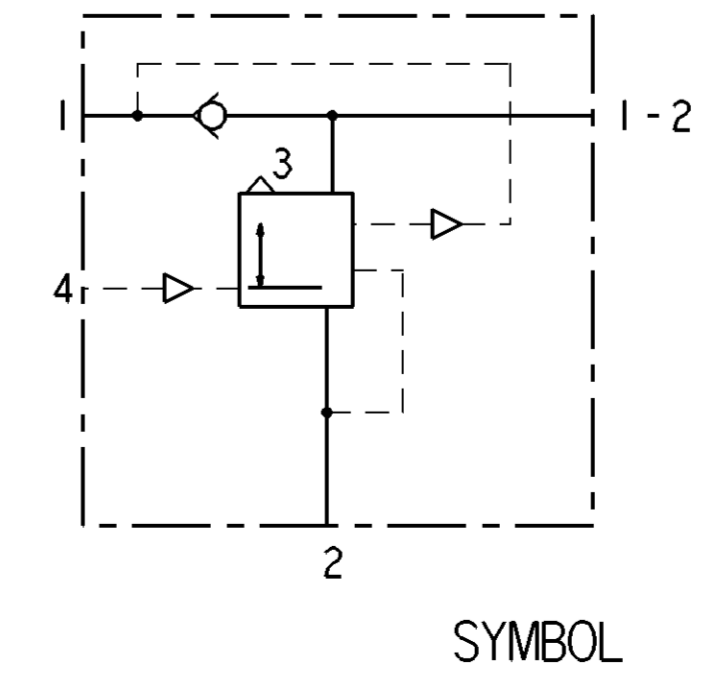
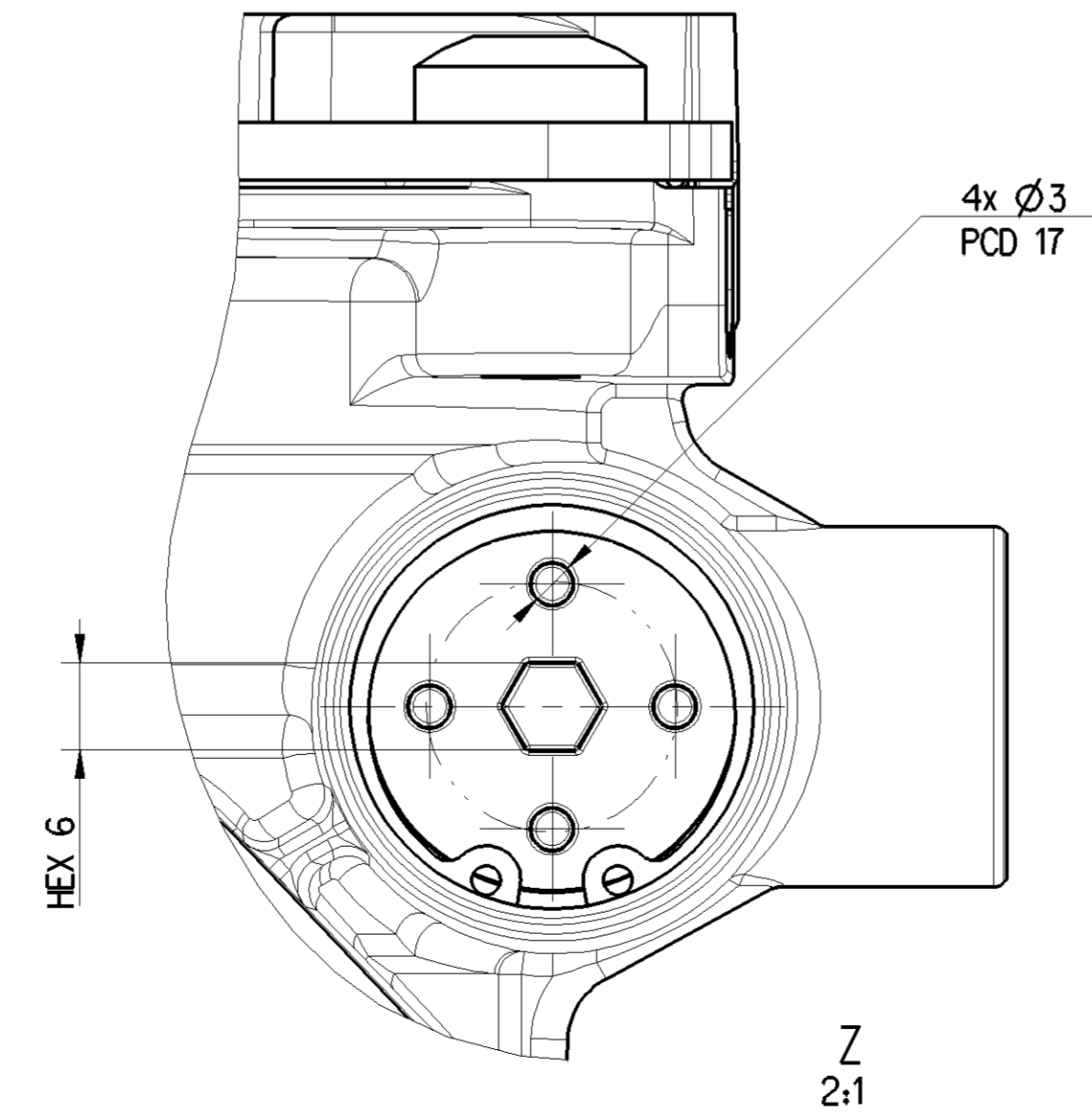
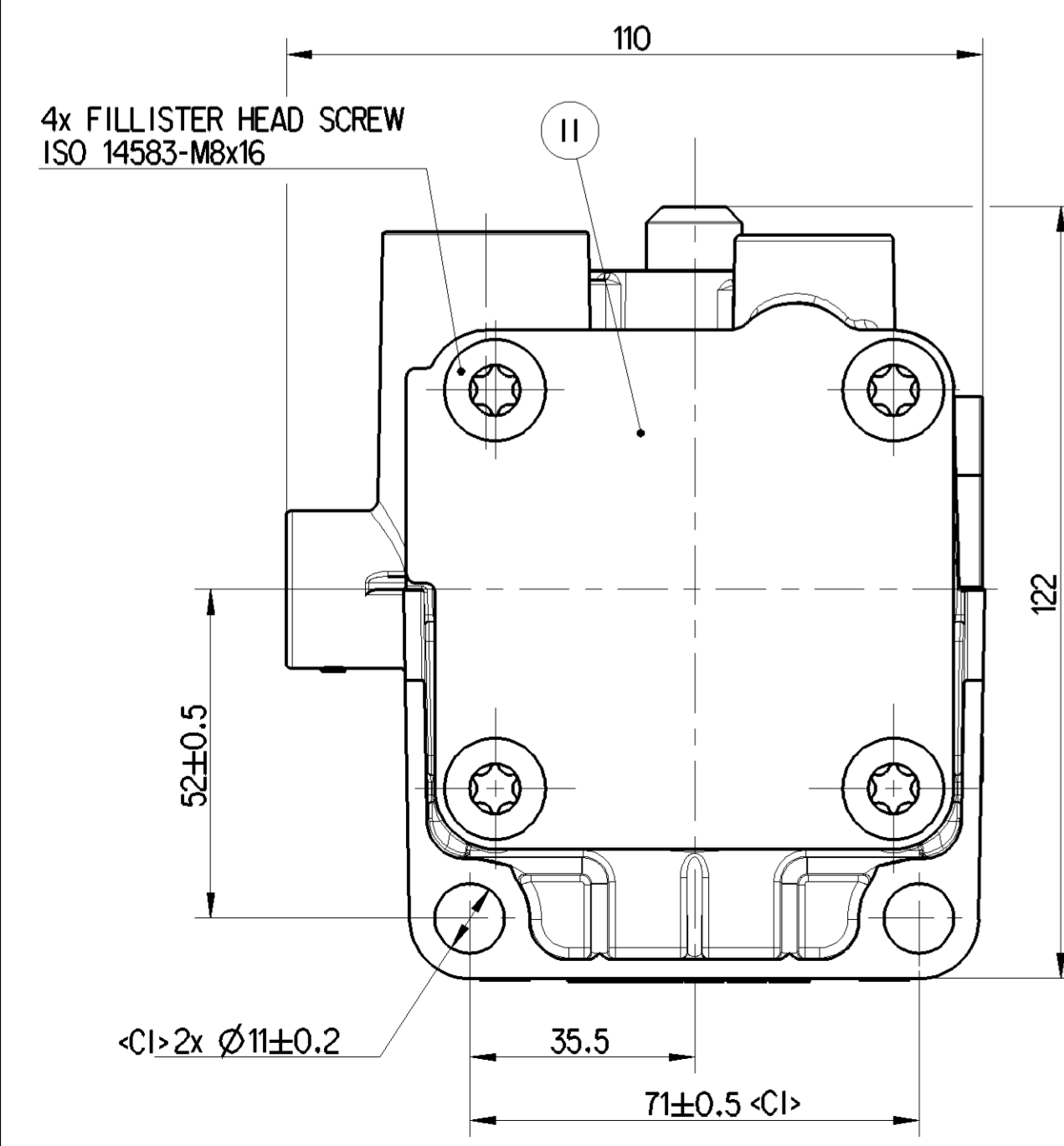


| CONDITION  | FROM     | TO       | NOMINAL DIAMETER |
|------------|----------|----------|------------------|
| FILLING    | PORT 1   | PORT 1-2 | ≥10 mm           |
| BRAKING    | PORT 1-2 | PORT 2   | ≥11.5 mm         |
| EXHAUSTING | PORT 2   | PORT 3   | ≥10.6 mm         |

| PART CODE | MATERIAL        | SURFACE PROTECTION |
|-----------|-----------------|--------------------|
| V         | STEEL           | ZINC NICKEL PLATED |
| IV        | PLASTIC         | NO TREATMENT       |
| III       | ALUMINIUM ALLOY | CHROMATED          |
| II        | STEEL           | POWDER COATED      |
| I         | STEEL           | ZINC PLATED        |

NOTE:  
 1 ATTACHMENT OF TRAILER RELEASE VALVE  
 RECOMMENDED TORQUE: 18±2 Nm

RECOMMENDED TORQUE FOR FITTINGS:  
 2 THREAD-M16x1.5, TIGHTENING TORQUE: 30 TO 35 Nm  
 3 THREAD-M22x1.5, TIGHTENING TORQUE: 34 TO 40 Nm



|   |                |                  |                             |          |                                 |
|---|----------------|------------------|-----------------------------|----------|---------------------------------|
| General Specifications: JED-334-1 - Size ISO 14405 LP |                | Copyright WABCO® |                             |          |                                 |
| Further Technical Data: 971 002 049 0                 |                | Date: 2021-06-01 | Signature: M S              |          |                                 |
| Doc. Code: 035  | Sheet: 1 To 56 | Checked: Szyszka | Expert: Pomuragoraj C       |          |                                 |
| General Tolerances JED-261                            |                | Mass: 1.233 kg   | Scale: 1:1                  |          |                                 |
| Range of Nominal Dimensions (± mm)                    |                | Size: 2x1        | Material No.: 971 002 025 0 |          |                                 |
| Class   | 1) ≤ 50        | 2) > 50 &lt; 180 | 3) > 180 &lt; 400           | 4) > 400 | Date of first issue: 2020-06-01 |
| Fine  | 0.5            | 1.0              | 1.5                         | 2.0      | Doc. Code: 005                  |
| Medium  | 1.0            | 2.0              | 3.0                         | 4.0      | Language: EN                    |
| Coarse  | 2.0            | 3.5              | 5.0                         | 6.5      | Sheet: 1/1                      |
| Tapped Holes acc. -                                   |                | Revision: tx     | Techn. Resp.: A             | 5250     | Replacement for: -              |
| 1) Tolerance Class Applied Crossmarked                |                | A 1              | CREO                        | 507805   |                                 |

Non e' permesso copiare o riprodurre questo documento, ne utilizzare il contenuto a fini commerciali, senza permesso scritto dalla WABCO. E' vietata espressamente la ristampa o l'uso non autorizzato di questo documento. Toute reproduction ou utilisation non autorisée sans la permission écrite de la WABCO est formellement interdite. Toute utilisation non autorisée sera considérée comme étant illicite. All rights reserved. No part of this document may be reproduced, stored in a retrieval system, or transmitted, in any form or by any means, electronic, mechanical, photocopying, recording, or by any information storage and retrieval system, without the prior written permission of WABCO.