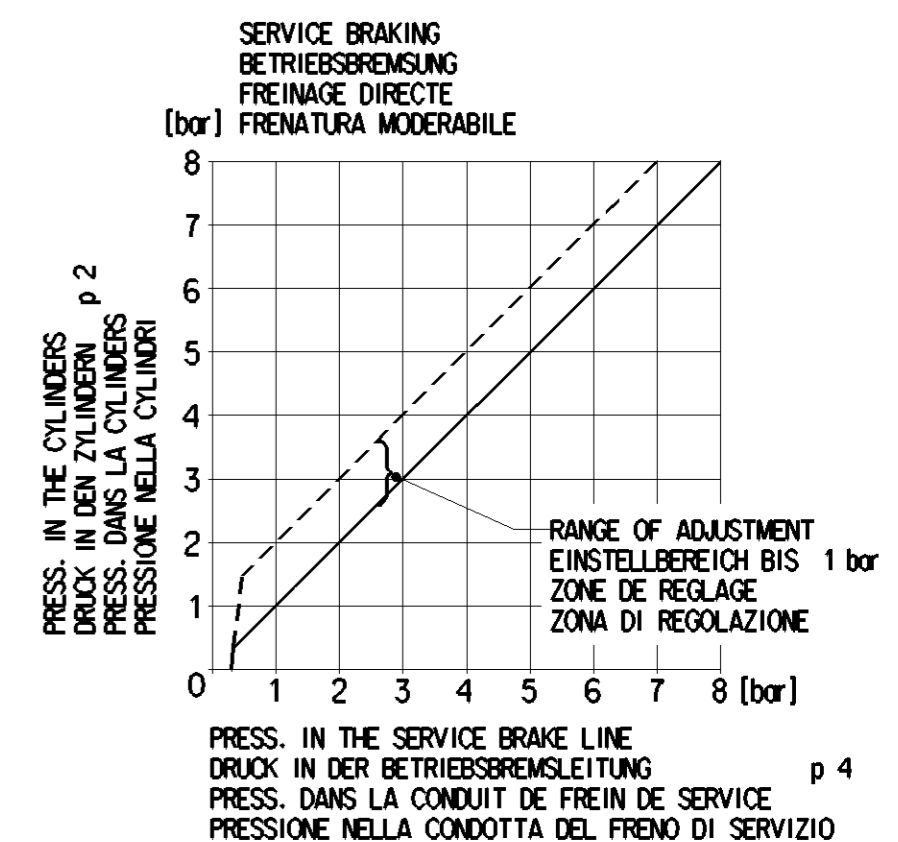
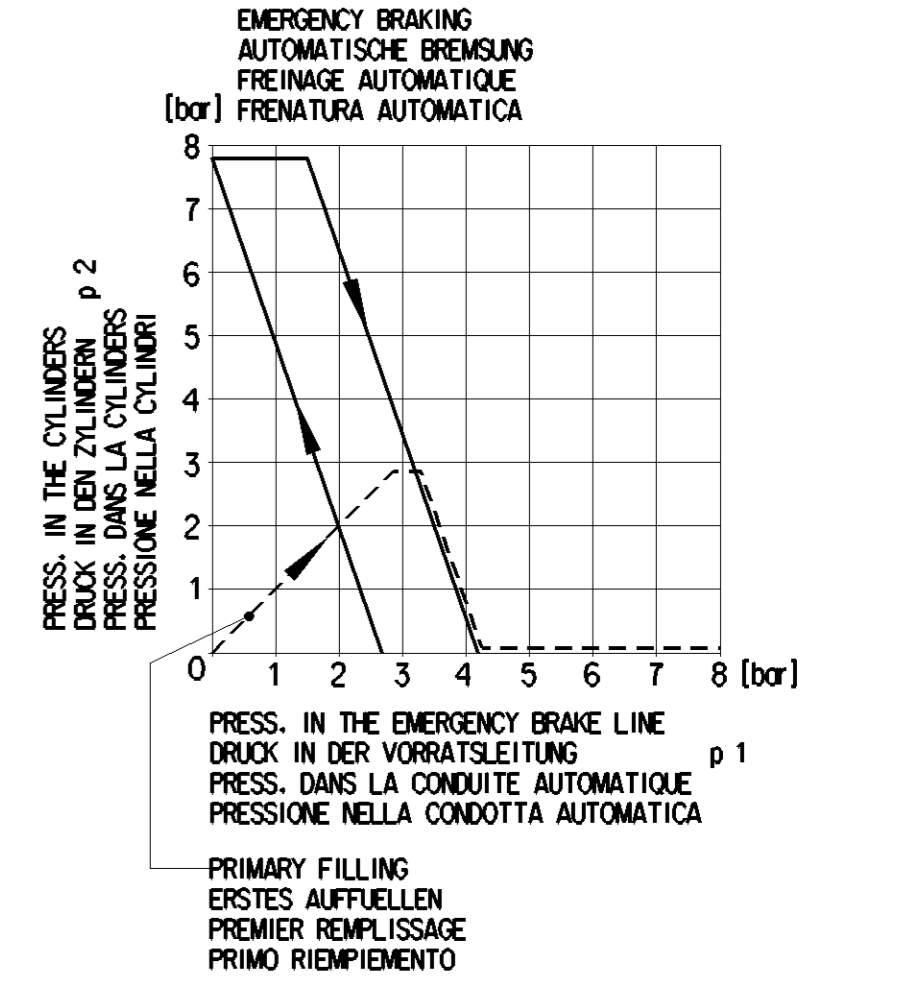
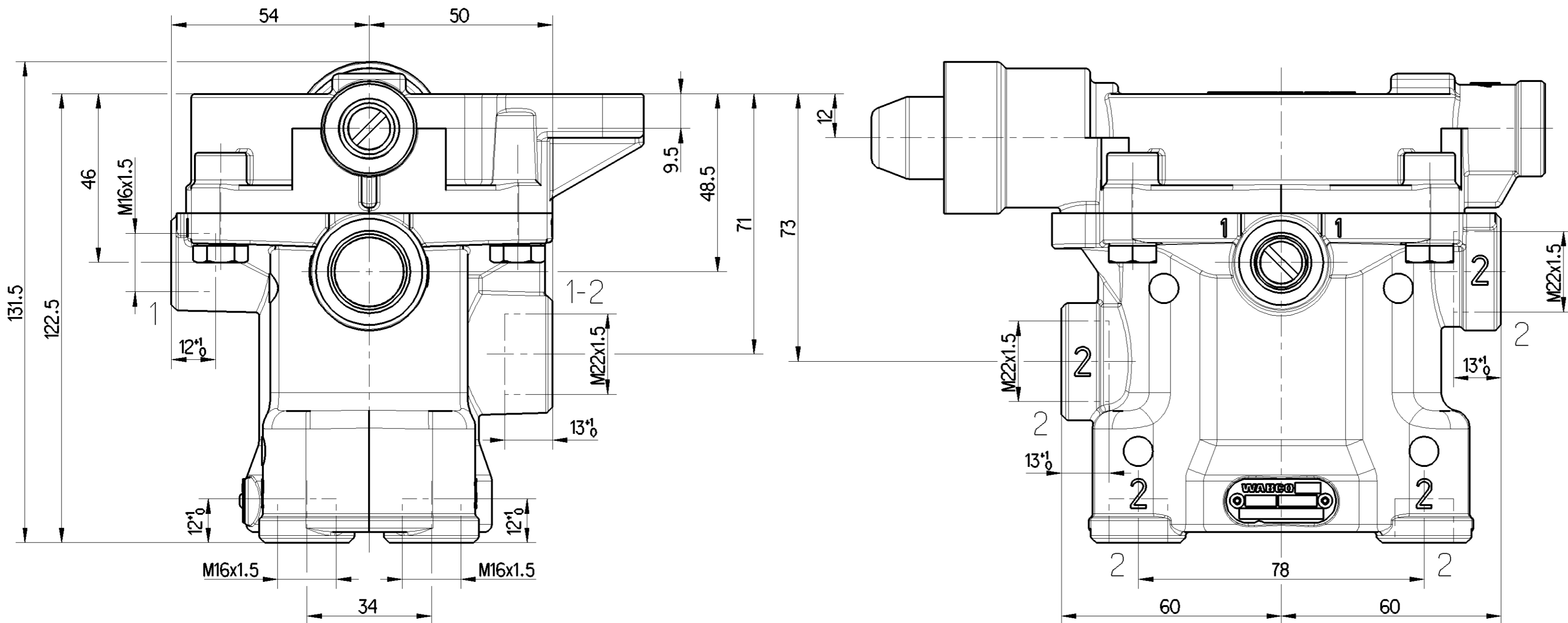


Non e permesso, concesso, o terzi o riproduzione questo documento, ne utilizzare il contenuto o renderlo comunque noto o terzi senza autorizzazione esplicita. Ogni infrazione costituisce un evidente abuso e comportera il risarcimento dei danni subiti. E' fatta riserva di tutti i diritti derivanti da brevetti o modelli.

Touta communication ou reproduction de ce document, toute exploitation ou communication de son contenu sont interdites, sauf autorisation expresse. Tout manquement a cette regle constitue un abus evident et expose son auteur au versement de dommages et interets. Tous droits de propriete industrielle reserves, notamment en matiere de brevets et de modesles.

Copyright of this document and giving it to others and the use or communication of the contents thereof, are forbidden, without express authority. Contravention of this restriction will constitute an evident abuse and result in a liability to the payment of damages. All rights are reserved in the event of the grant of patent or registration of a utility model or design. This document is the subject of copyright.

Wiederholte sowie Verletzung dieser Unterlagen, Vervielfachen und Weitergeben dieser Unterlagen ist nicht gestattet, soweit nicht ausdrücklich ansonsten, zu wiederholten Malen, ausdrücklich, sticht ein, offensichtlichen Missbrauch dar und verpflichtet zu Schadensersatz. Alle Rechte hier den Fall der Patenterteilung oder Gebrauchsmuster-Eintragung vorbehalten.



TORQUE FOR CONNECTIONS:
 ANZUGSMOMENT FUER EINSCHRAUBSTUTZEN:
 COUPLE DE SERRAGE DES RACCORDS:
 COPPIA DI SERRAGGIO DEI RACCORDI:

M22x1.5 -> Ma = 40±5Nm
M16x1.5 -> Ma = 30±5Nm

- 1-2: RESERVOIR SUPPLY PORT
 ANSCHLUSS FUER LUFTBEHAELTER (p 1-2)
 ORIFICE AU RESERVOIR
 ORIFICIO AL SERBATOIO
- 2: BRAKE CYLINDER PORT
 ANSCHLUSS FUER ZYLINDER (p 2)
 ORIFICE AUX CYLINDERS
 ORIFICIO AL CILINDRI
- 1: PORT FOR EMERGENCY LINE
 ANSCHLUSS FUER VORRATSLEITUNG (p 1)
 ORIFICE POUR CONDUITE AUTOMATIQUE
 ORIFICIO PER LA CONDOTTA AUTOMATICA
- 4: PORT FOR SERVICE LINE
 ANSCHLUSS FUER BREMSLEITUNG (p 4)
 ORIFICE POUR CONDUITE DIRECTE
 ORIFICIO PER LA CONDOTTA MODERABILE

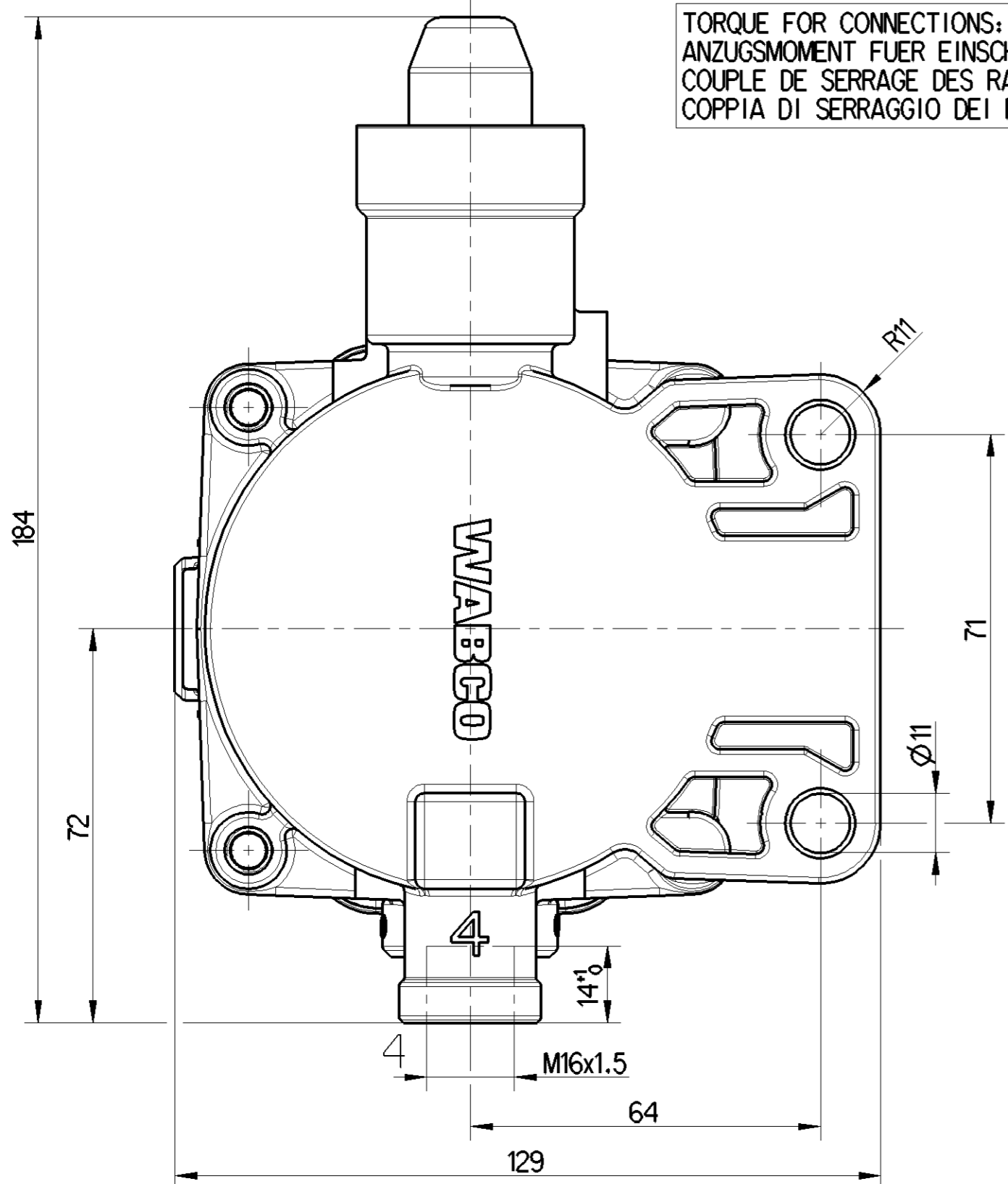
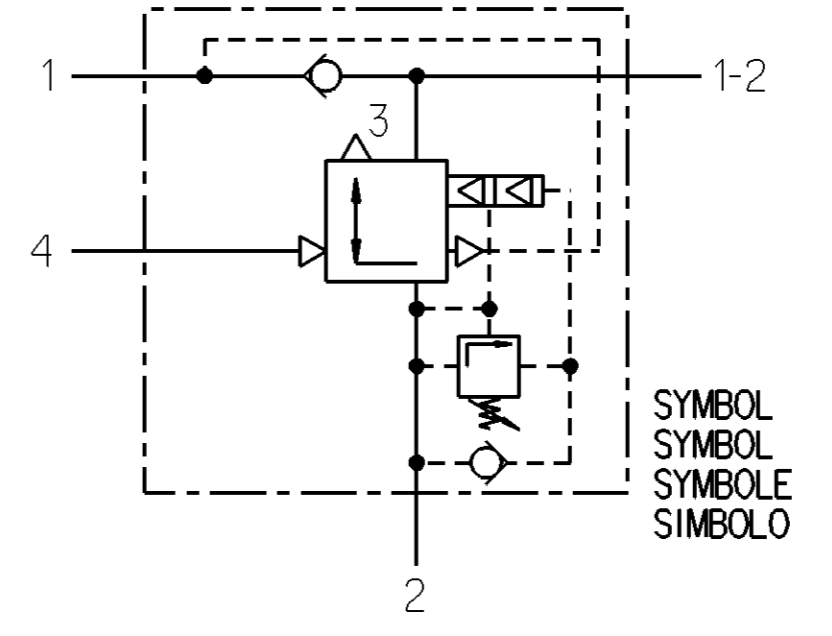
THERMAL RANGE OF APPLICATION
 THERMISCHER ANWENDUNGSBEREICH
 GAMME D'APPLICATION THERMIQUE
 CAMPO DI APPLICAZIONE TERMICA
 -40 ... +80°C

WORKING MEDIUM:
 ARBEITSMEDIUM:
 FLUIDE D'UTILISATION:
 FLUIDO DI ESERCIZIO:

AIR
 LUFT
 AIR
 ARIA

WORKING PRESSURE
 BETRIEBSDRUCK
 PRESSION D'UTILISATION
 PRESSIONE DI ESERCIZIO

MAX. 10 bar



General Specification: JED-334-1, Size ISO 14405 LP		Copyright WABCO®	
Further Technical Data:		Date	Signature
Doc. Code:	Sheet:	2018-06-22	Horan
General Tolerances JED-261		Checked	Szysko
Range of Nominal Dimensions (± mm)		Expert	Szysko
Class	1) ≤ 50	> 50 ≤ 180	> 180 ≤ 400
Fine	0.5	1.0	1.5
Medium	1.0	2.0	3.0
Coarse	2.0	3.5	5.0
Tapped Holes acc.		Mass	Scale
1) Tolerance Class Applied Crossmarked		1.50	1:1
		Size	CAD System
		A 2	CREO
		Material No.	
		971 002 152 7	
		Date of first issue: 2018-06-22	
		Doc. Code Language Sheet	
		005 ML 1/1	
		ECN-No. Revision Techn. Resp. Replacement for	
		- - - 5250 -	