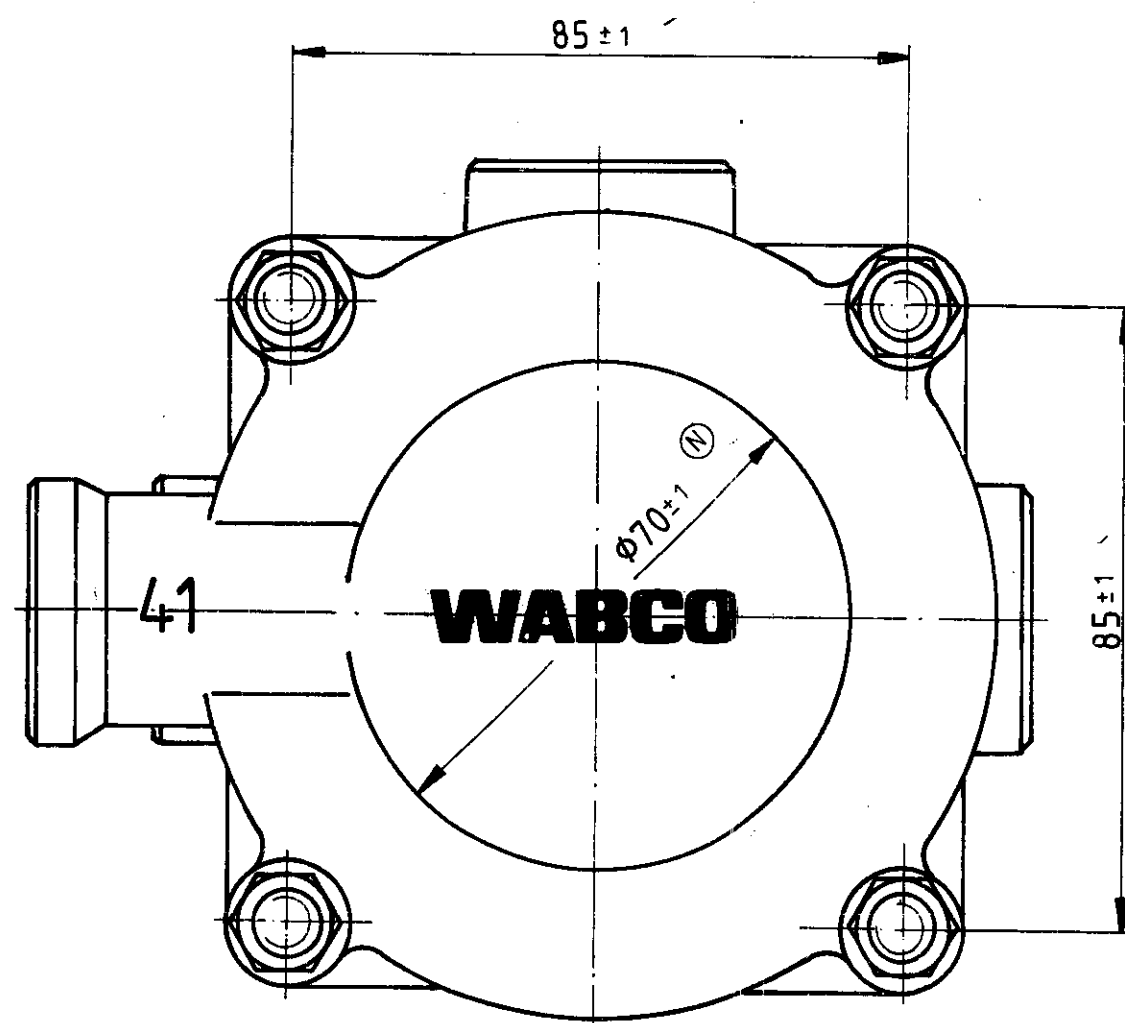
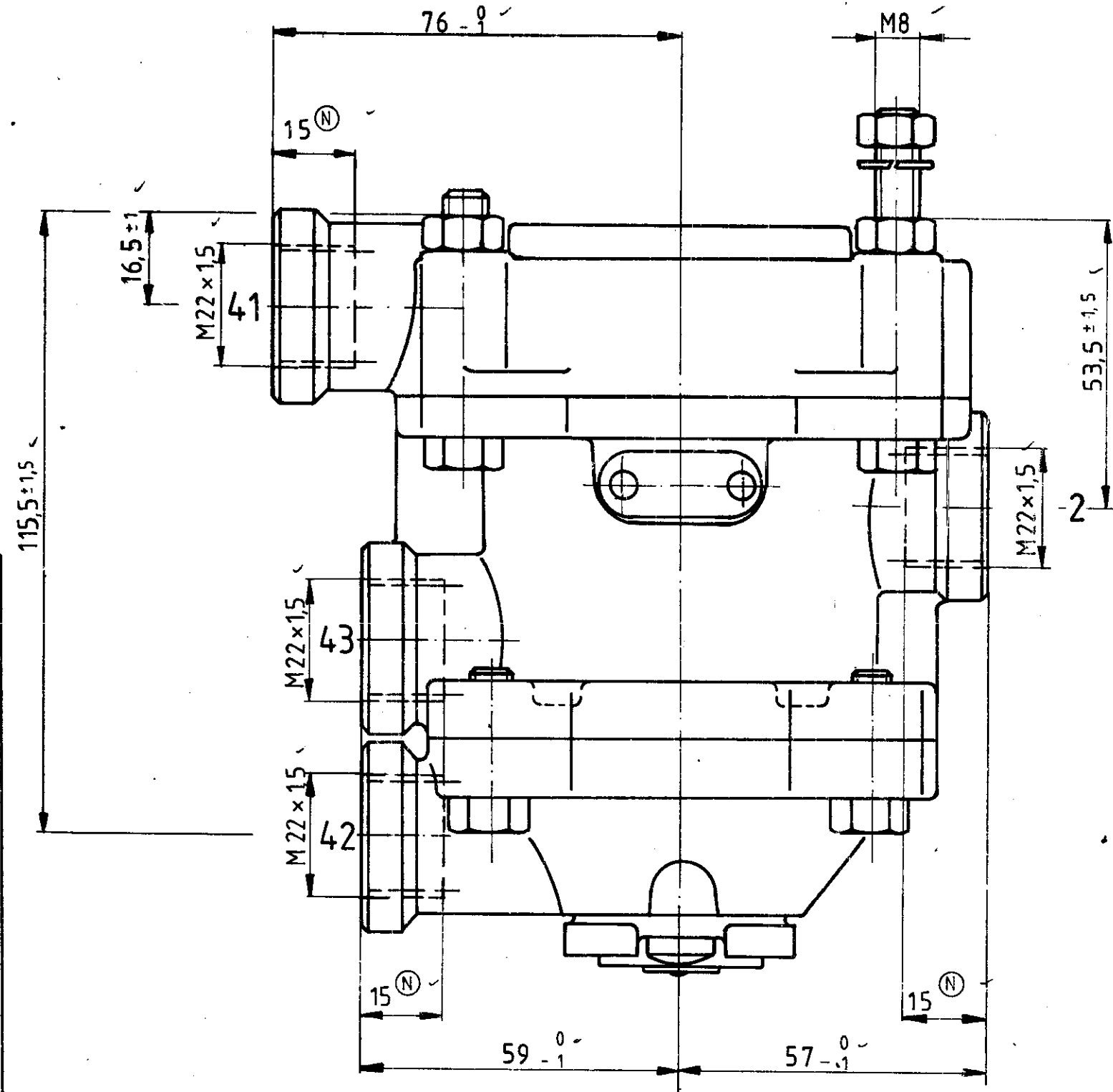
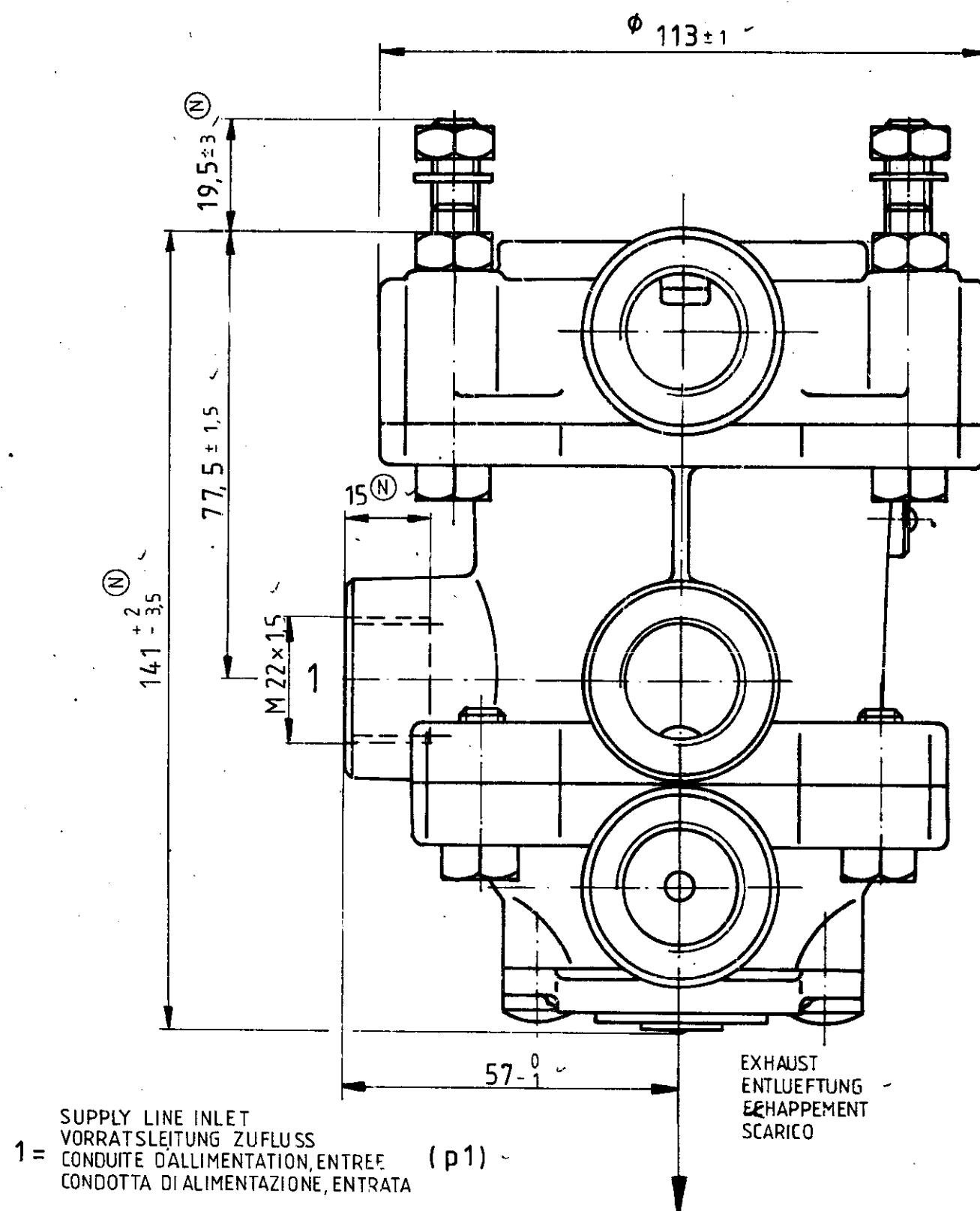


COPYRIGHT BY MARCO WESTINGHOUSE GMBH HANNOVER

All rights are reserved in the event of the grant of a patent or the registration of a utility model or design. Alle Rechte für den Fall der Patenterteilung oder Gebrauchsmuster-Eintragung vorbehalten.



THESE CONTOURS ADMISSIBLE
DIESE KONTOUREN ZULAESSIG
CES CONTOURS ADMISSIBLES
QUESTE CONTOURE ADMISSIBILE



1 = SUPPLY LINE INLET
VORRATSLAUFUNG ZUFLUSS
CONDUITE D'ALIMENTATION, ENTREE
CONDOTTA DI ALIMENTAZIONE, ENTRATA (p1)

2 = BRAKING LINE TO THE TRAILER
BREMSLEITUNG ZUM ANHAENGER
CONDUITE DE FREINAGE A LA REMORQUE
CONDOTTA DI FRENATURA AL RIMORCHIO (p2)

41 = SERVICE BRAKING SYSTEM (CIRCUIT 1)
BETRIEBSBREMSANLAGE (KREIS 1)
DISPOSITIF DE FREINAGE DE SERVICE (CIRCUIT 1)
DISPOSITIVO DI FRENATURA DI SERVIZIO (CIRCUITO 1) (p41)

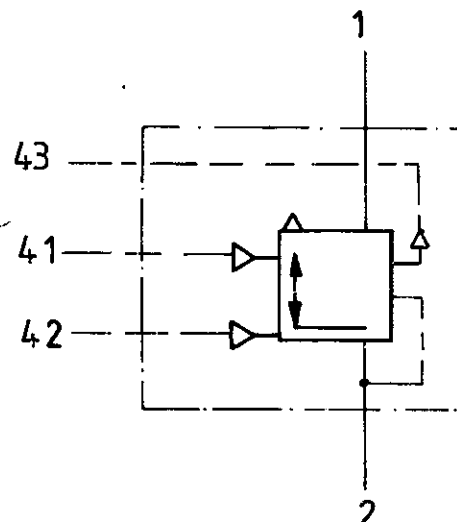
42 = SERVICE BRAKING SYSTEM (CIRCUIT 2)
BETRIEBSBREMSANLAGE (KREIS 2)
DISPOSITIF DE FREINAGE DE SERVICE (CIRCUIT 2)
DISPOSITIVO DI FRENATURA DI SERVIZIO (CIRCUITO 2) (p42)

43 = SPRING BRAKE CYLINDER
FEDERSPEICHERZYLINDER
CYLINDRE A RESSORT
CILINDRO A MOLLA (p43)

WORKING PRESSURE
BETRIEBSDRUCK
PRESSION DE SERVICE $p_e = \text{MAX. } 8 \text{ bar}$
PRESSIONE DI SERVIZIO

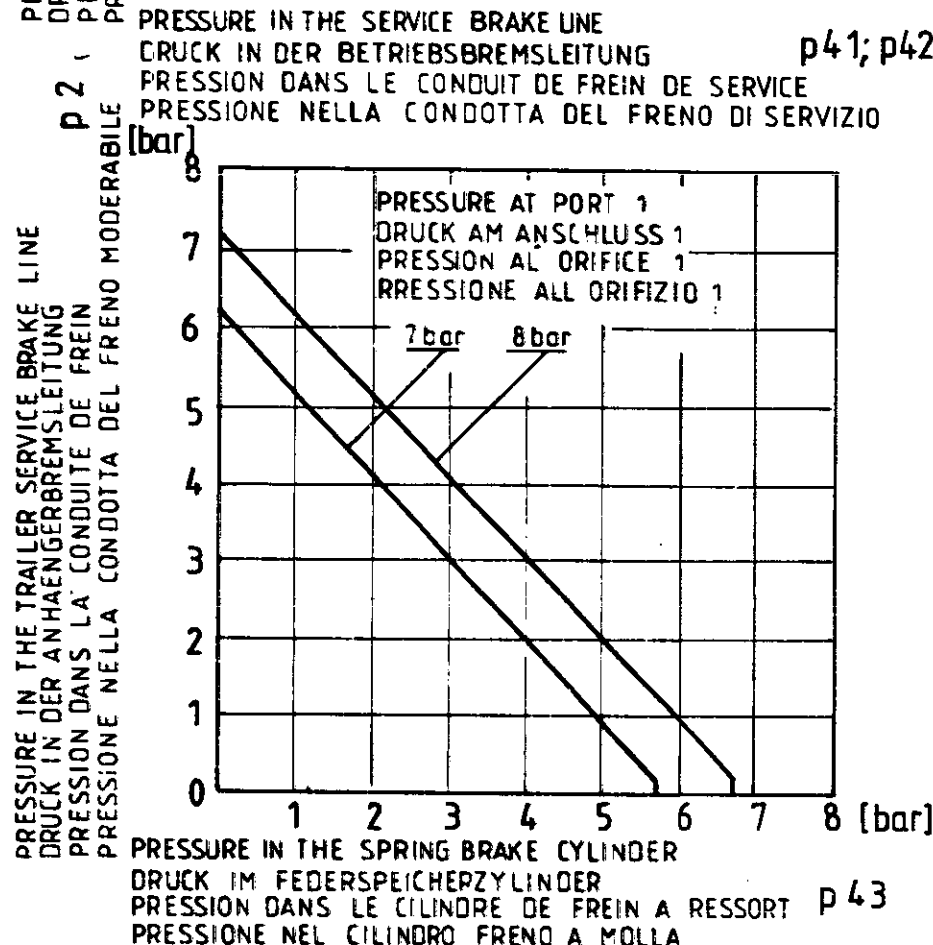
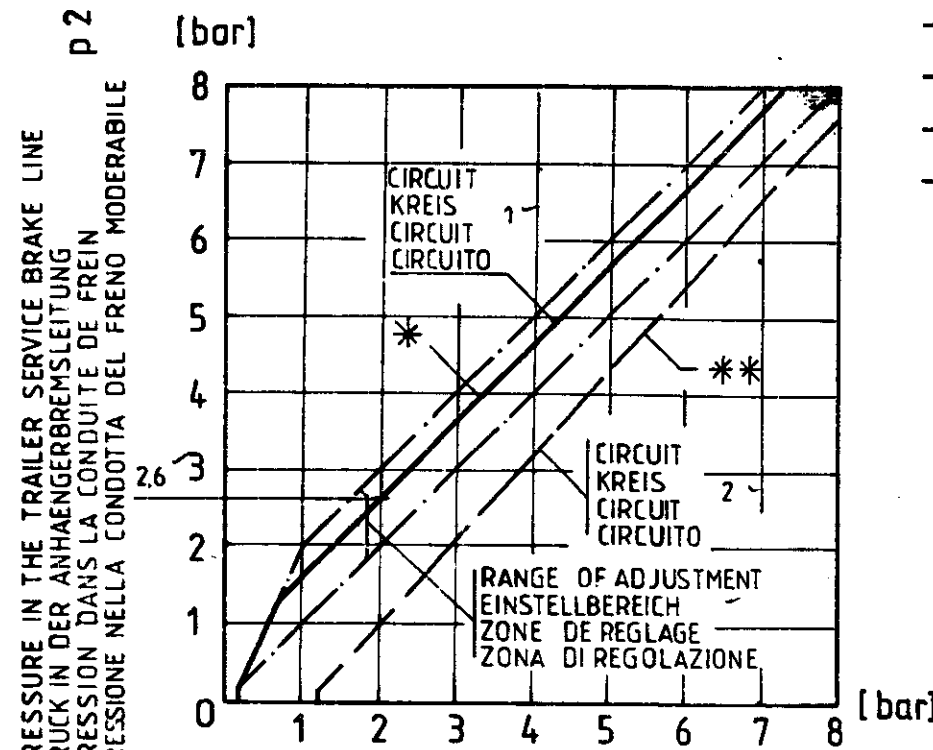
MEDIUM: AIR
MEDIUM: LUFT
FLUIDE: AIR
FLUIDO: ARIA

THERMAL RANGE OF APPLICATION
THERMISCHER ANWENDUNGSBEREICH
APPLICATION THERMIQUE
CAMPO DI APPLICAZIONE TERMICA $-40^\circ\text{C} \dots +80^\circ\text{C}$



CHARACTERISTIC KENNLINIE * : BRAKING SYSTEM OK OR FAILURE OF CIRCUIT 2
COURBE CARACTERISTIQUE * : INTAKTE BREMSANLAGE BZW. AUSFALL VON KREIS 2
CURVA CARATTERISTICA * : DISPOSITIVO DI FRENATURA INTATTO O DIFETTO DEL CIRCUITO 2

CHARACTERISTIC KENNLINIE ** : FAILURE OF CIRCUIT 1
COURBE CARACTERISTIQUE ** : AUSFALL VON KREIS 1
CURVA CARATTERISTICA ** : DIFETTO DEL CIRCUITO 1



DATE		SIGNATURE		WABCO	
78-12-04		DRAWN <i>Meinberg</i>			
79-07-30		CHECKED <i>Schütz</i>		TRAILER CONTROL VALVE VALVE DE COMMANDE DE REMORQUE VALVOLA DI COMANDO FRENATURA RIMORCHIO ANH.-STEUERVENTIL	
79-08-01		STANDARDIZATION <i>Ville</i>			
30630	7x(N)	84-11-29	MASS	SCALE	IDENTIFICATION CODE
16899	1x(M)	78-12-04	1:1	14	973 002 000 0
CHANGE NO.	LETT.	DATE	SIZE	T.R.I.	SHEET
			A2	140	1/1
REPLACEMENT FOR		DRAWING OF		CODE FOR FUNCTION	
71-03-20		71-03-20		605	

TAPPED HOLES ACC. ISO 4039

100 mm