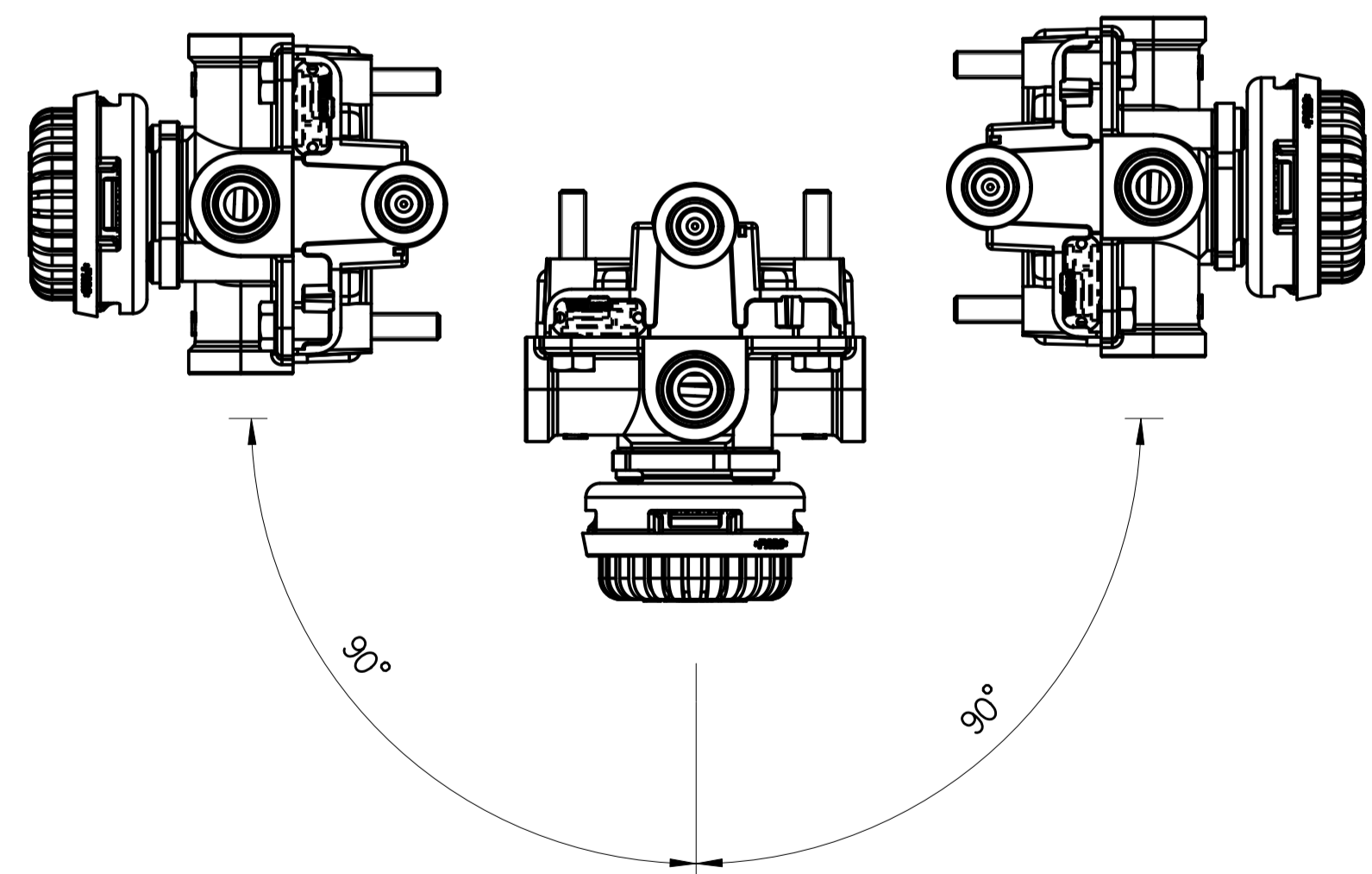
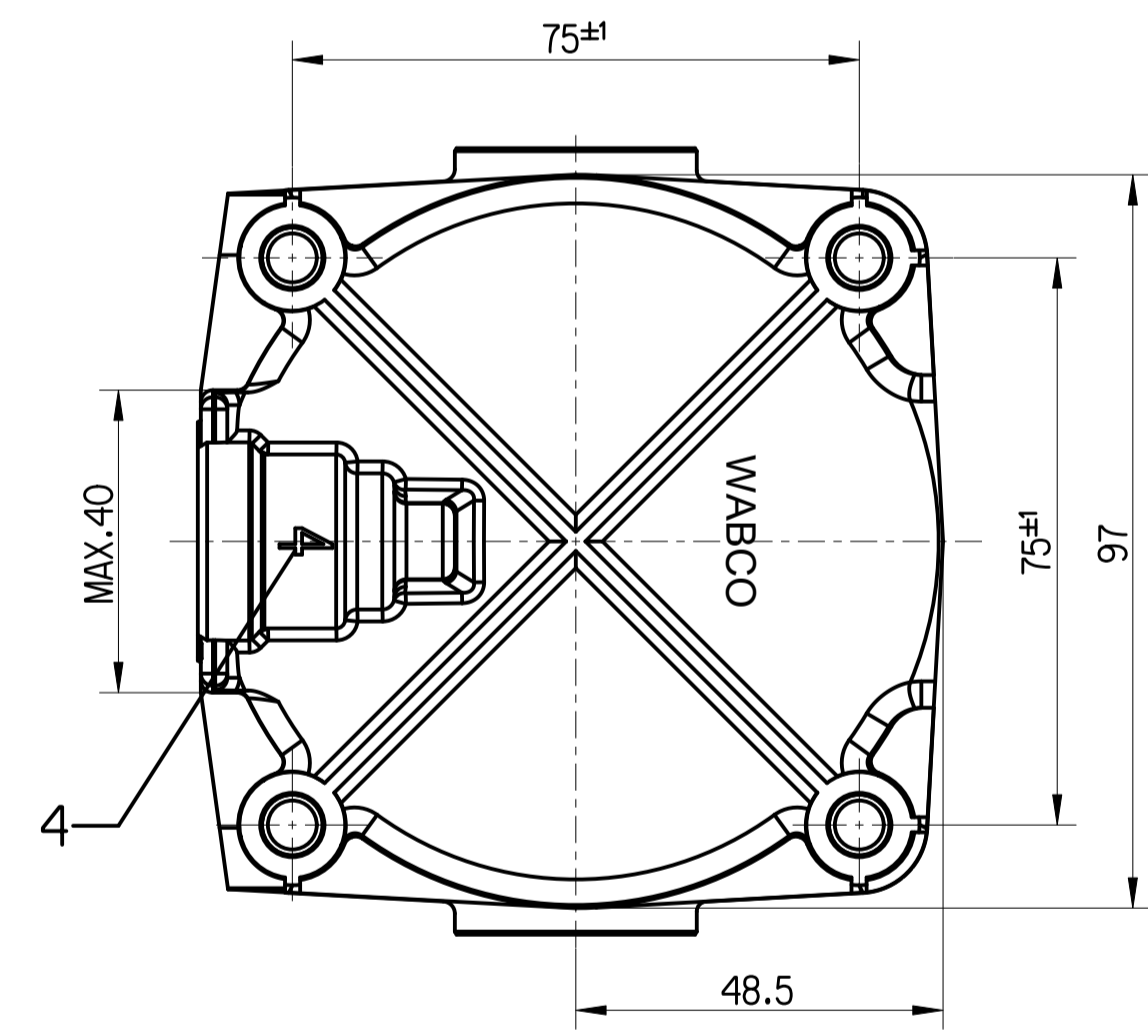
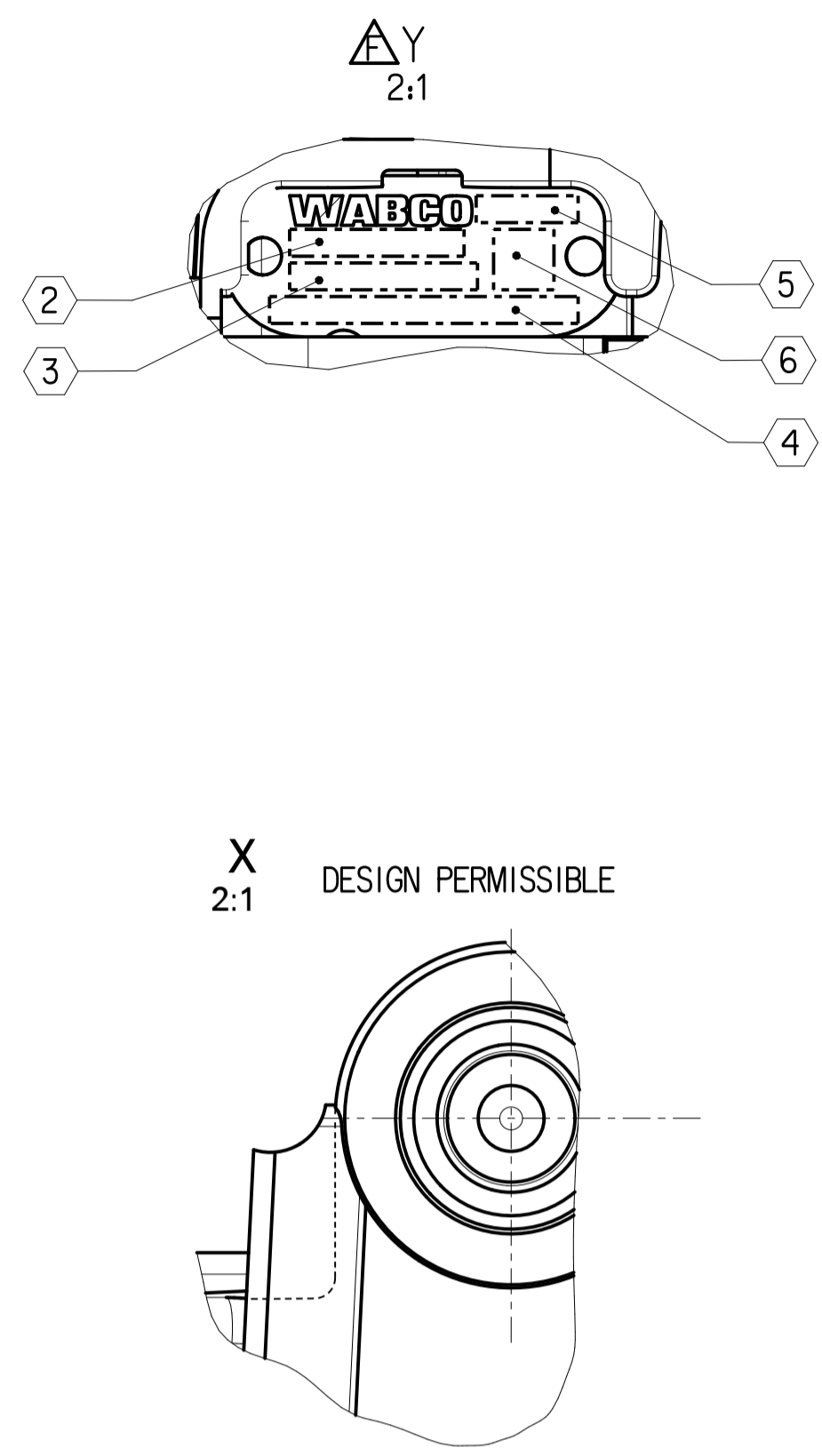
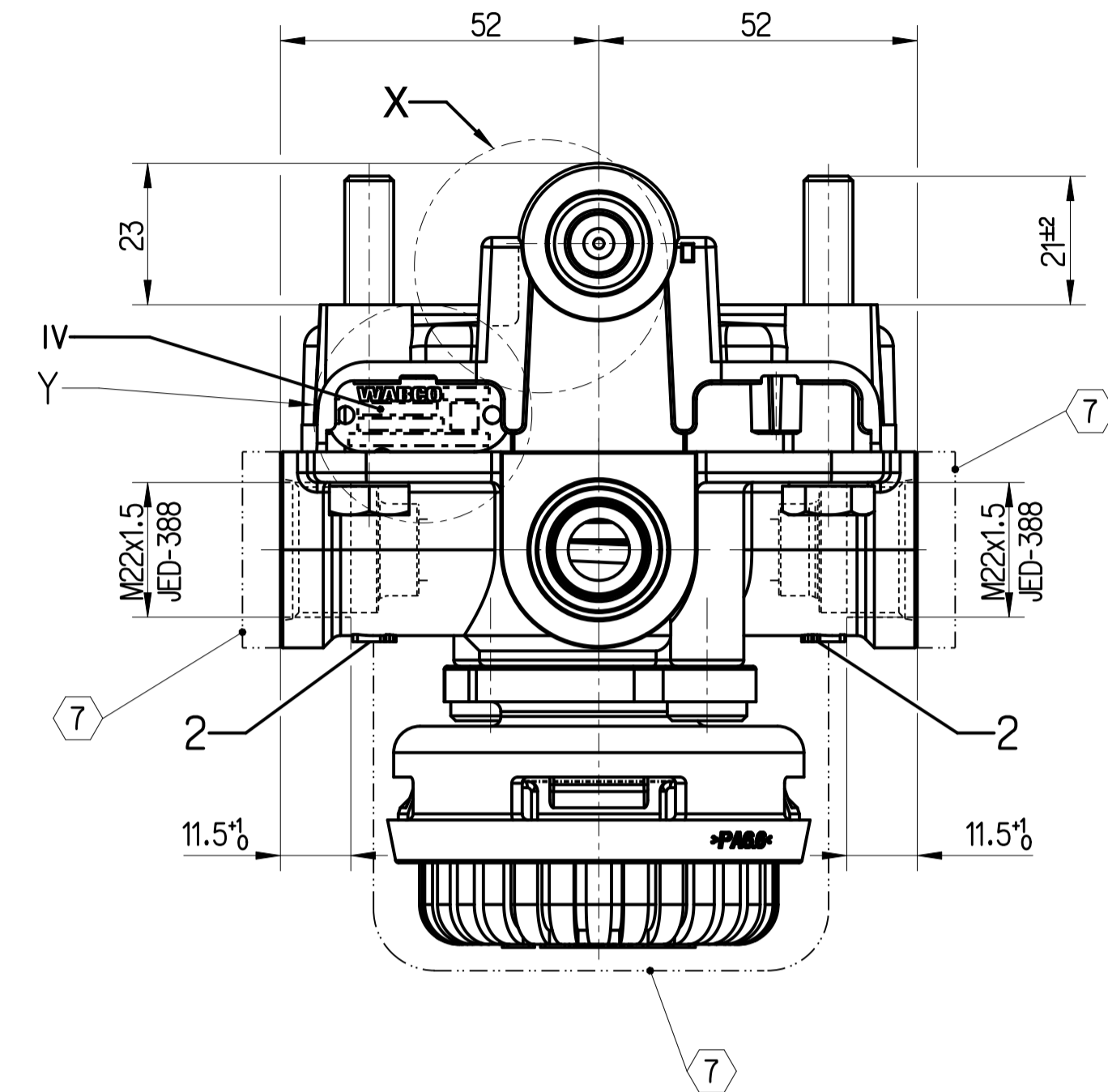
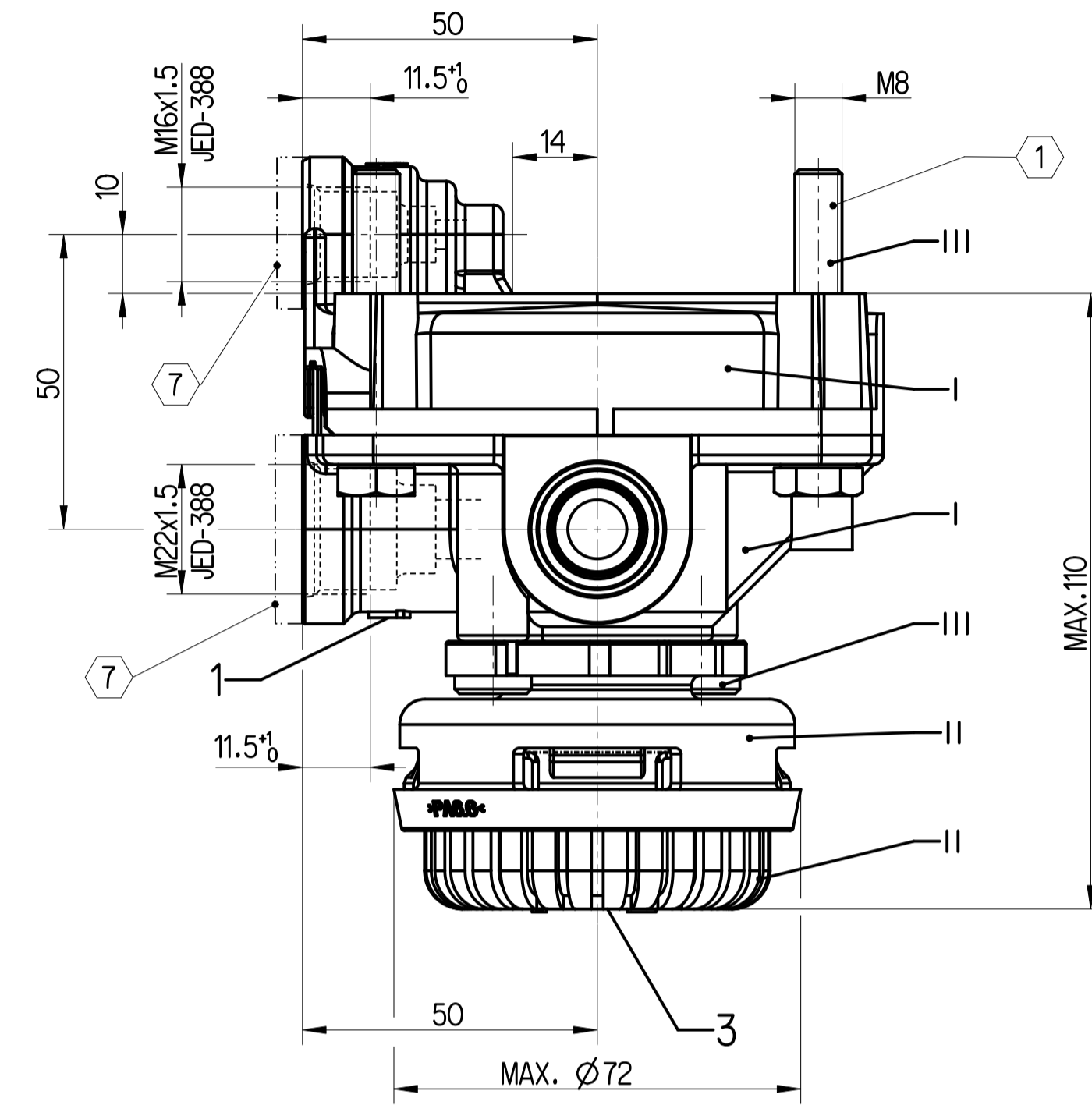


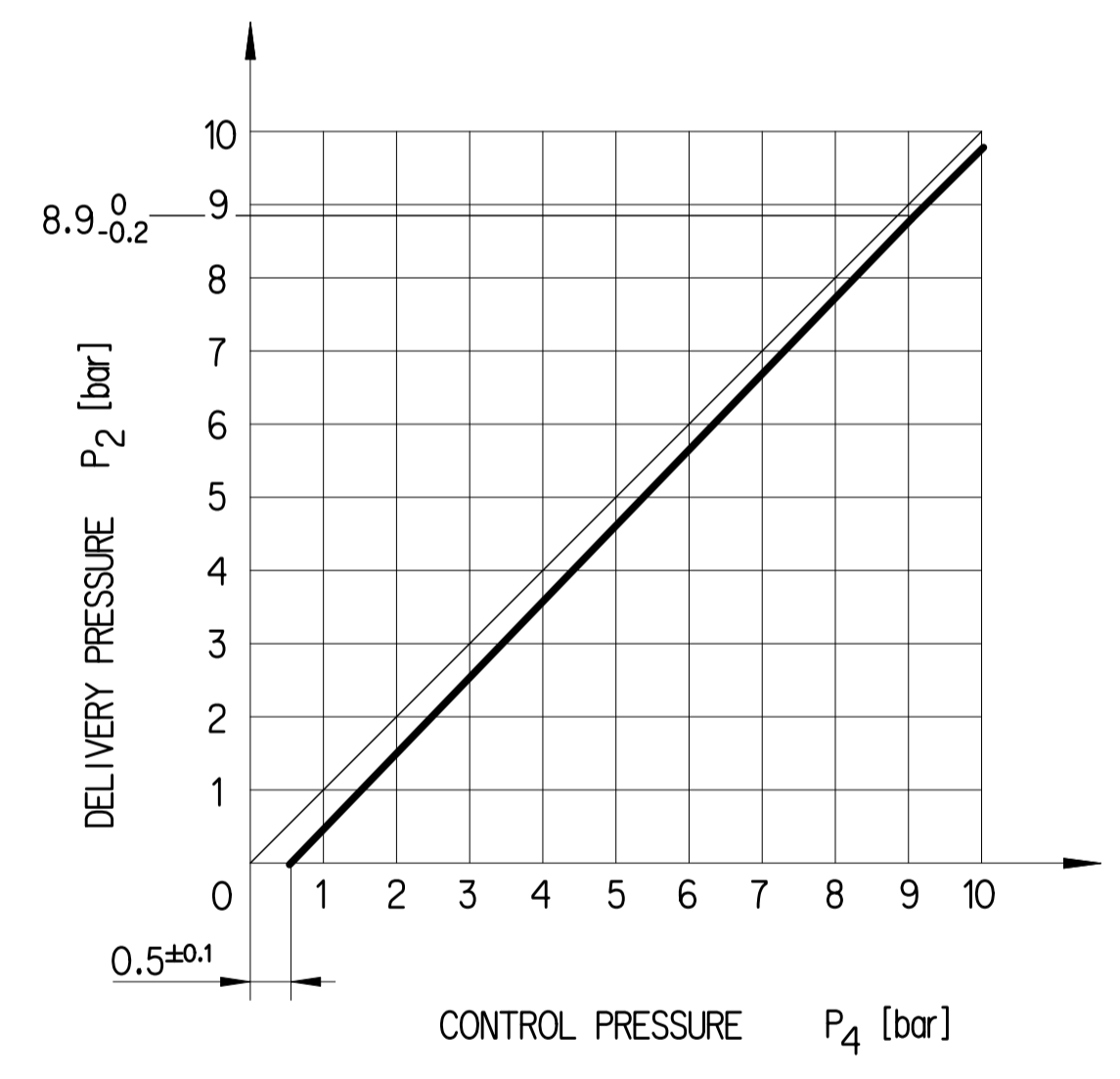
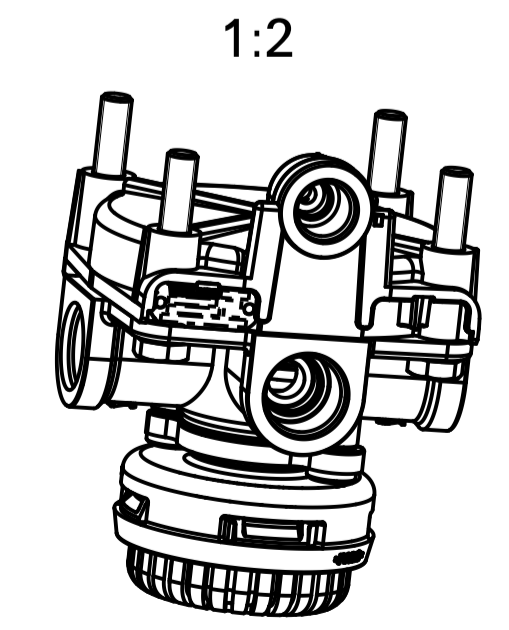
MATERIAL		SURFACE PROTECTION		
I	Al	JED-029M1	Passivation	JED-259-1
II	Po6.6	JED-354-1		
III	Fe	JED-051M4	Zn/Ni	JED-739-4
IV	Al	JED-077-1	Anodic Oxidation	JED-007-1

SAFETY CHARACTERISTICS	0
SIGNIFICANT CHARACTERISTICS	0
CUSTOMER INTERFACE	0

THERMAL RANGE OF APPLICATION THERMISCHER ANWENDUNGSBEREICH:		-40° ... +80 °C
TORQUE FOR CONNECTIONS ANZUGSMOMENT FÜR EINSCHRAUBSTUTZE		M16x1,5: Mmax.=34 Nm M22x1,5: Mmax.=53 Nm M=20% Nm (1)
1	SUPPLY VORRAT	
2	DELIVERY PRESSURE AUGESTFUERTER DRUCK	
3	EXHAUST ENTLUEFTUNG	
4	CONTROL PRESSURE STEUERDRUCK	
WORKING PRESSURE BETRIEBSDRUCK		MAX. p _e =10.2 bar
TEMPORARY KURZZEITIG		MAX. p _e =13 bar
SUPPLY PRESSURE VORRATSDRUCK		MAX. p _e =13 bar
MEDIUM MEDIUM		AIR LUFT
2	MANUFACTURING PLANT PRODUKTIONSSTAETTE	
3	WEEK / YEAR OF MANUFACTURE FERTIGUNGSWOCHE / JAHR	
4	WABCO-DEVICE NUMBER WABCO-GERAETE NUMMER	
5	CUSTOMER NO. / ZGS KUNDEN-NR. / KZ /	
6	DMC AREA DMC BEREICH	
PERMISSIBLE INSTALLATION ZULAESSIGE EINBAULAGE		±90°
7	COVER WHEN PAINTING ON THE VEHICLE BEI LACKIERUNG IM FAHRZEUG ABDECKEN	



PERMISSIBLE INSTALLATION POSITION



Toute communication de reproduction de ce document, toute exploitation ou communication de son contenu sans autorisation écrite de WABCO est formellement interdite. Toute réimpression ou utilisation non autorisée sans la permission écrite de WABCO est formellement interdite. Toute réimpression ou utilisation non autorisée sans la permission écrite de WABCO est formellement interdite. Toute réimpression ou utilisation non autorisée sans la permission écrite de WABCO est formellement interdite.

General Specifications: ISO 8015, JED-334-1, Size ISO 14405 LP		Copyright ZF®	
Further Technical Data: 973 011 009 0		Date	Signature
Doc. Code: 035		2025-07-07	Rutkowska
Sheet: 1 To X		Checked	
General Tolerances JED-261		Toma	
Range of nominal dimensions in mm			
Class	1)	≤ 50	> 50 > 180 > 400
Fine		±0.5	±1 ±1.5 ±2
Medium	X	±1 ±2 ±3 ±4	±3°
Coarse		±2 ±3.5 ±5 ±6.5	
Tapped Holes acc.			
1) Tolerance Class Applied Crossmarked			
Mass		Material No.	
0.7 kg		973 011 009 0	
Scale		Date of first issue: 2015-10-20	
1:1 (1:2, 2:1)		Doc. Code Language Sheet	
Size CAD System		005 ML 1/1	
A 1 CREO		Revision Techn. Resp.	
517006		3 x F 5220	
Replacement for			