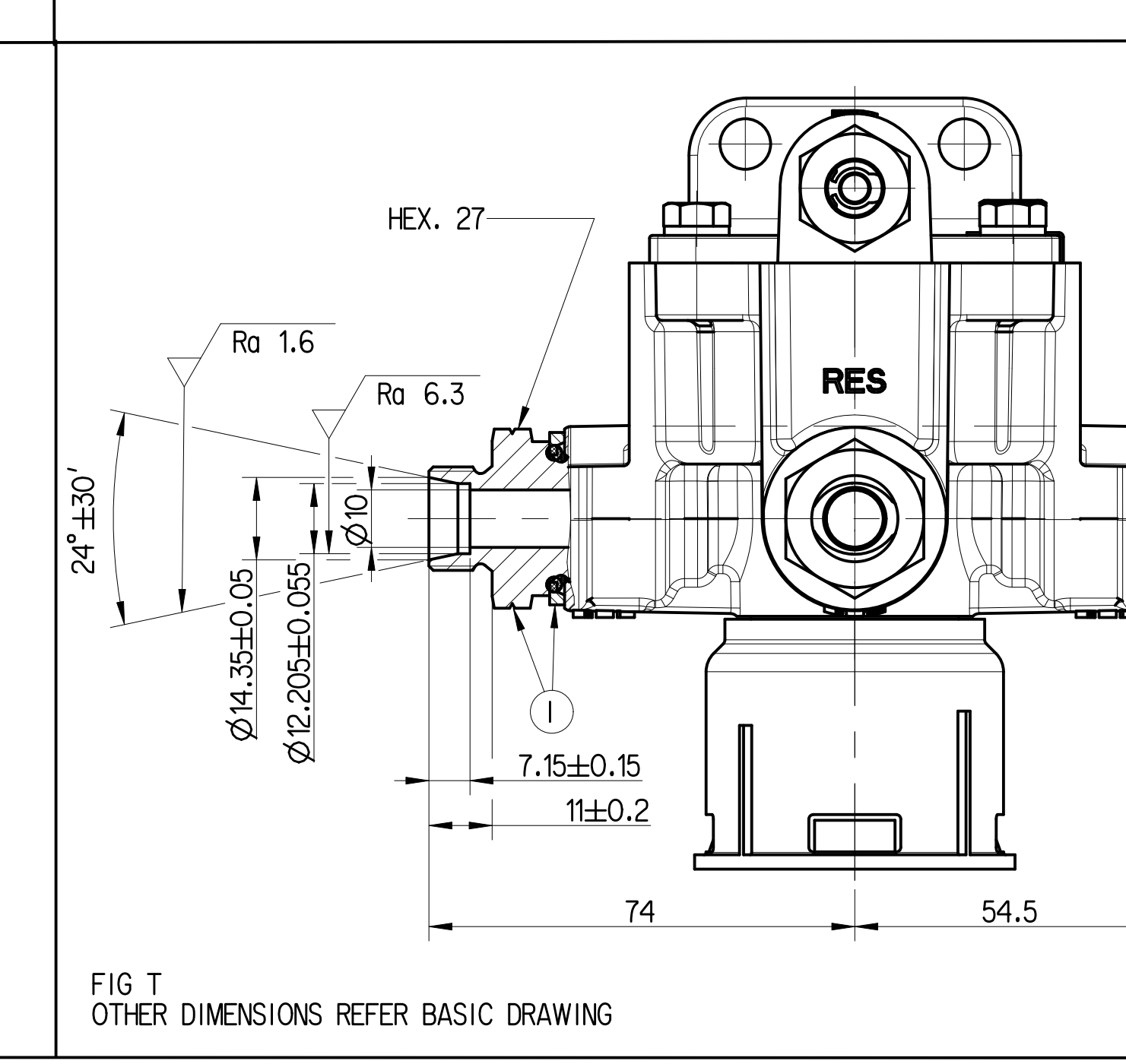
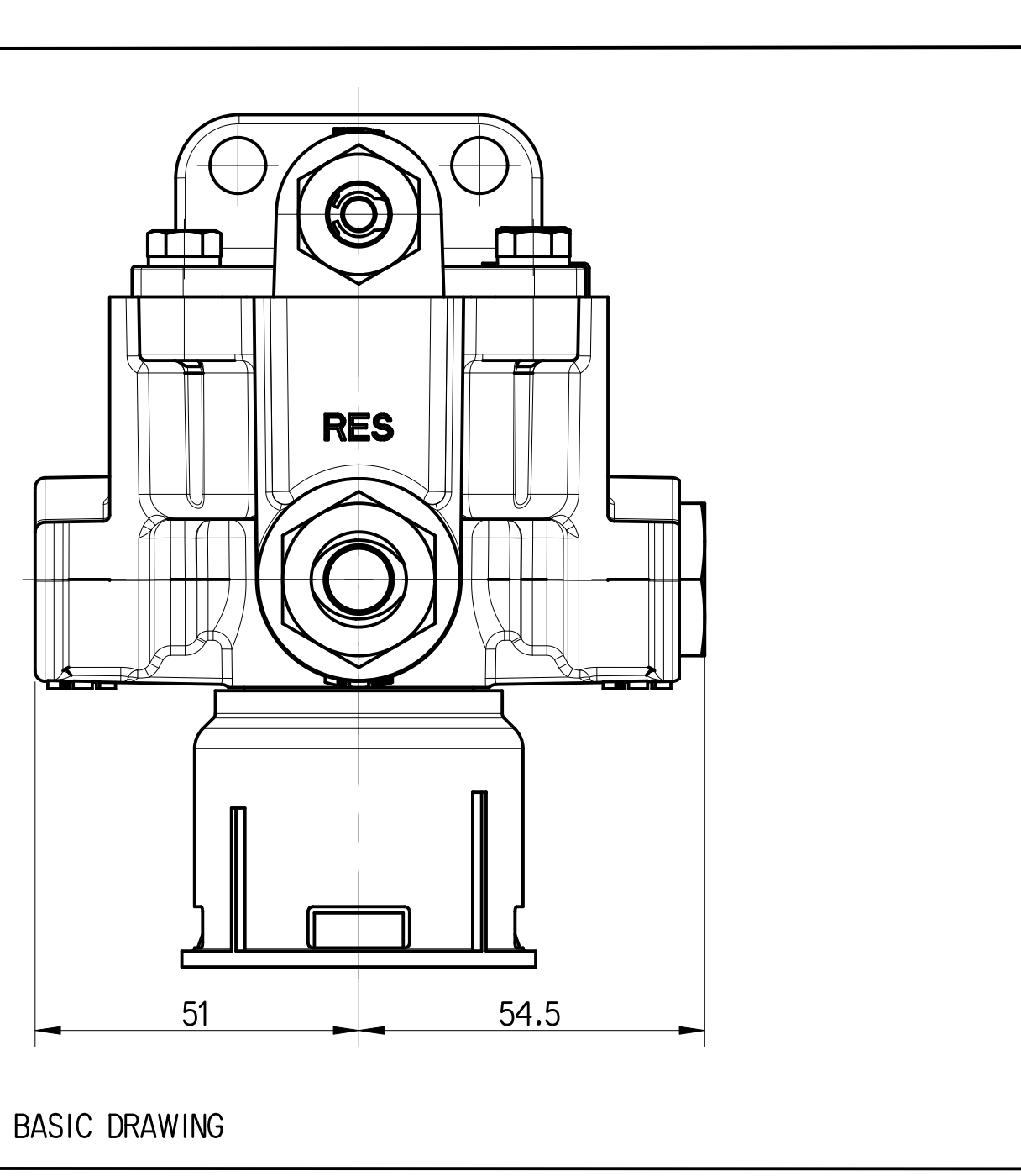
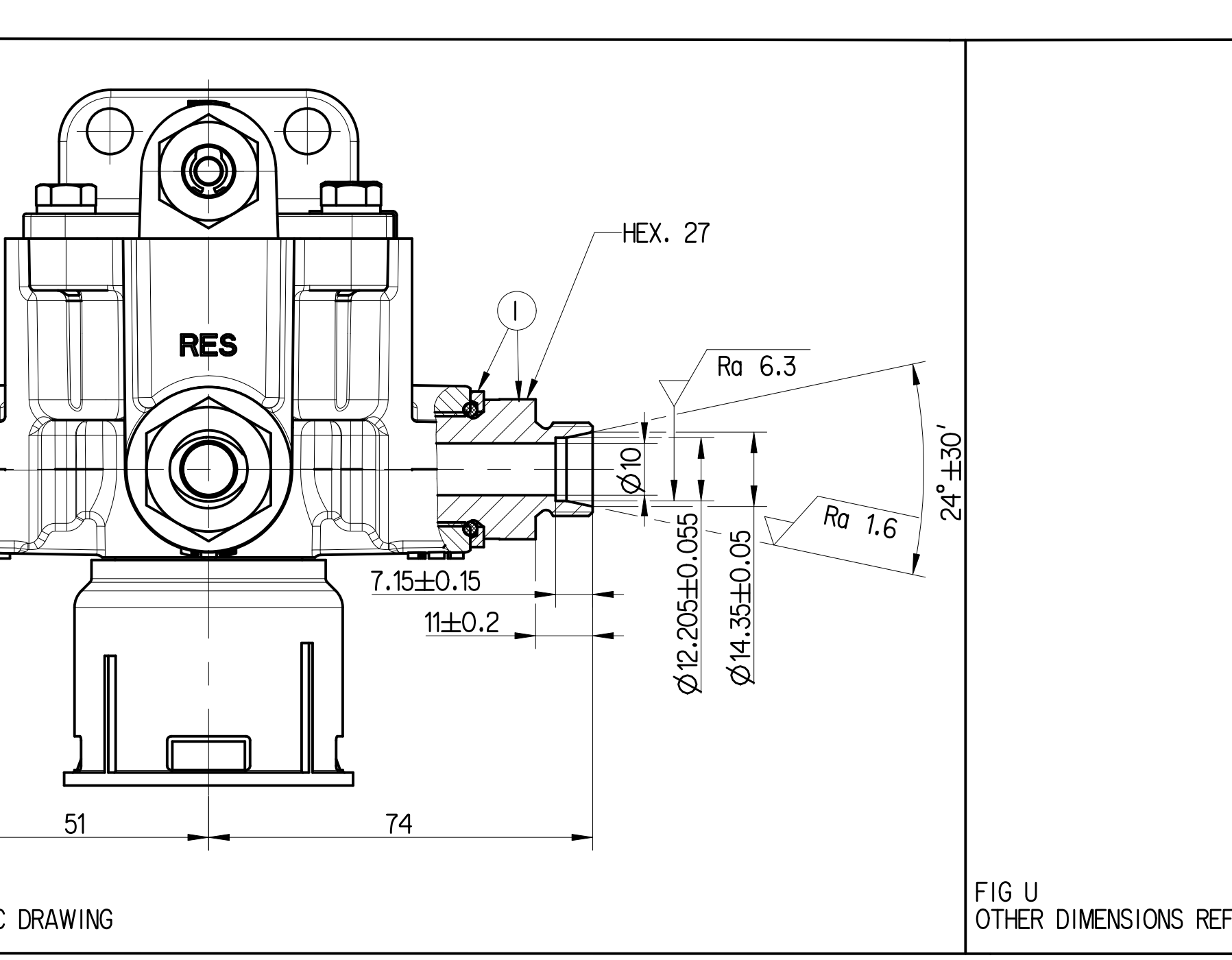
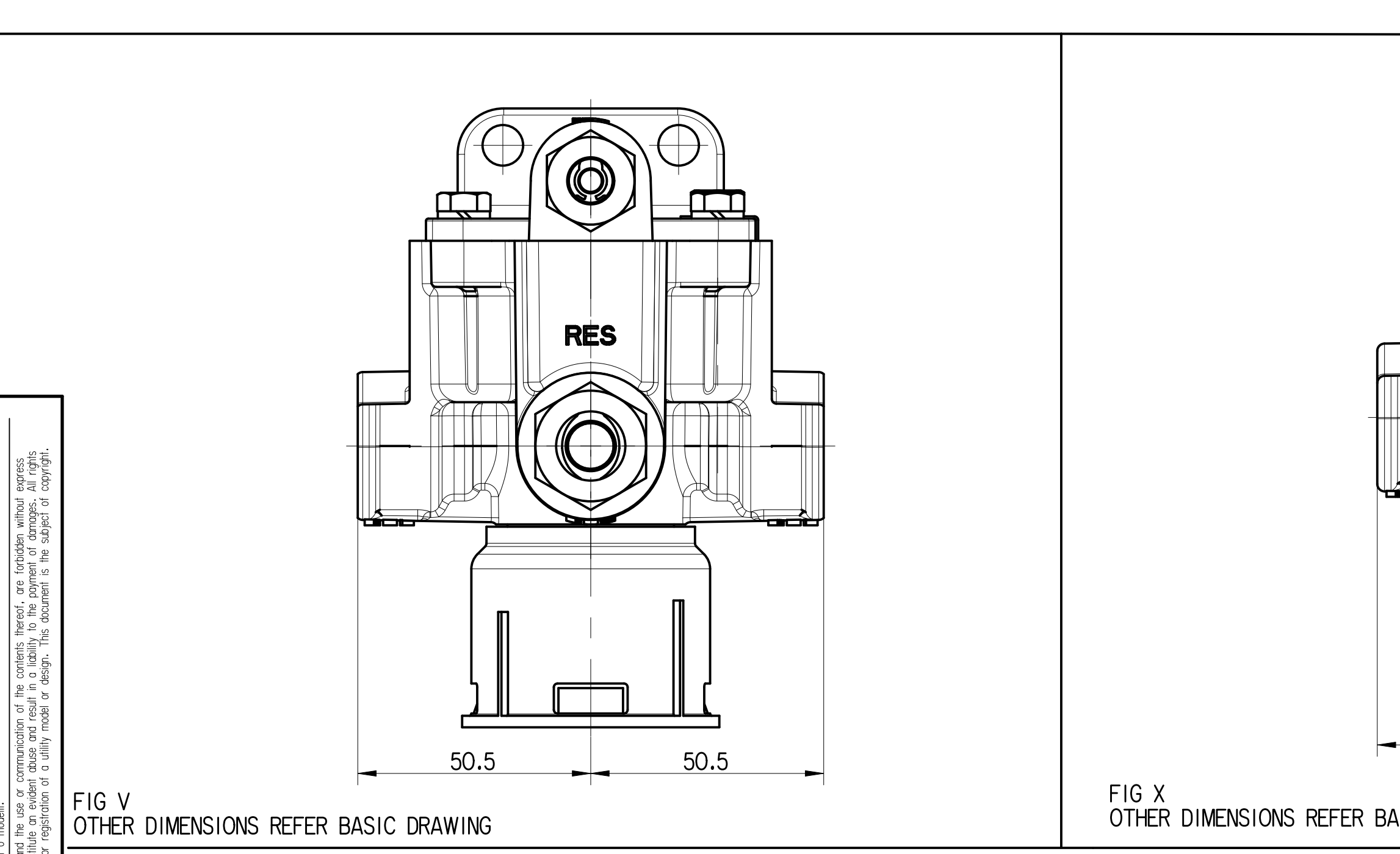
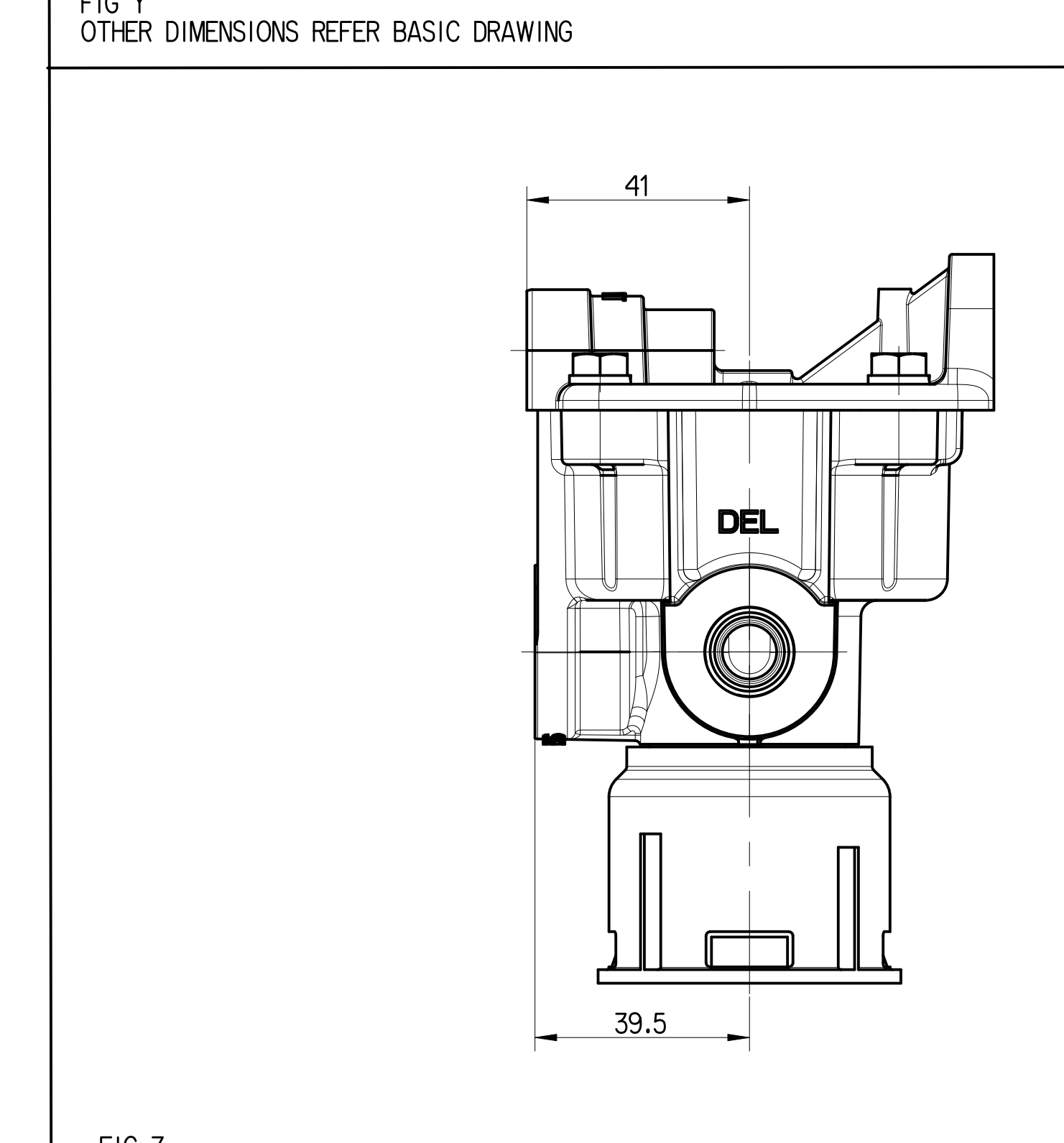
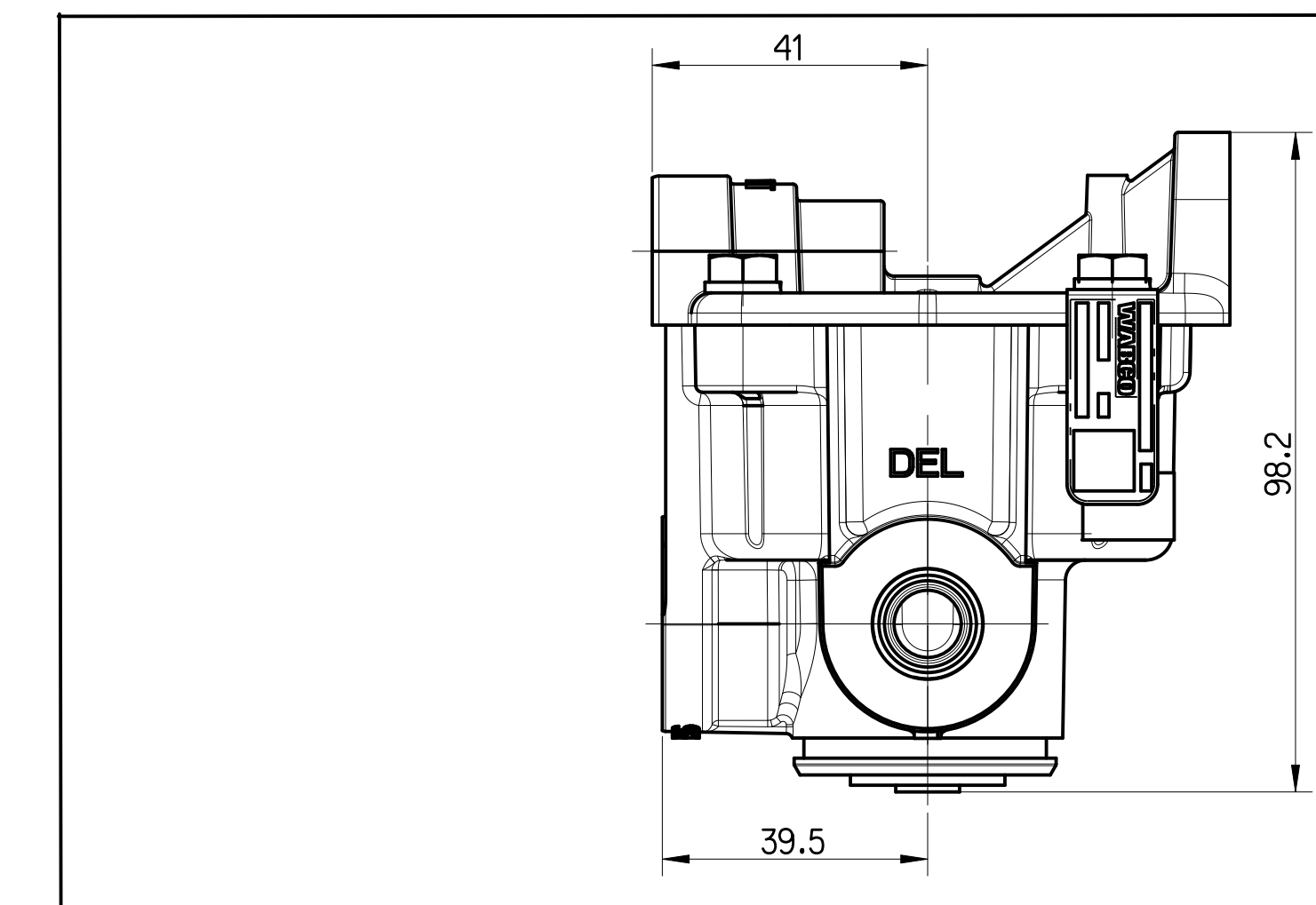
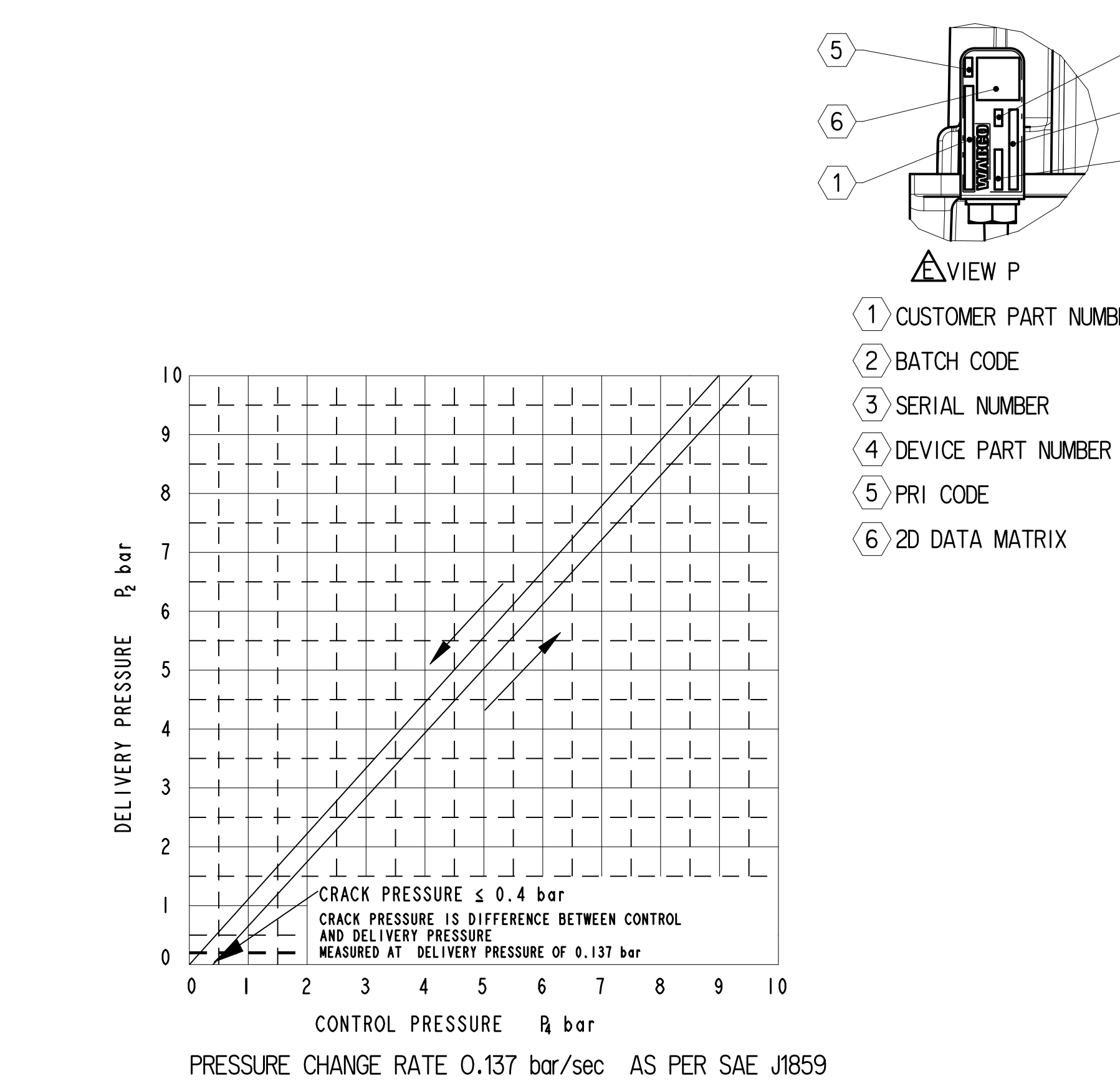
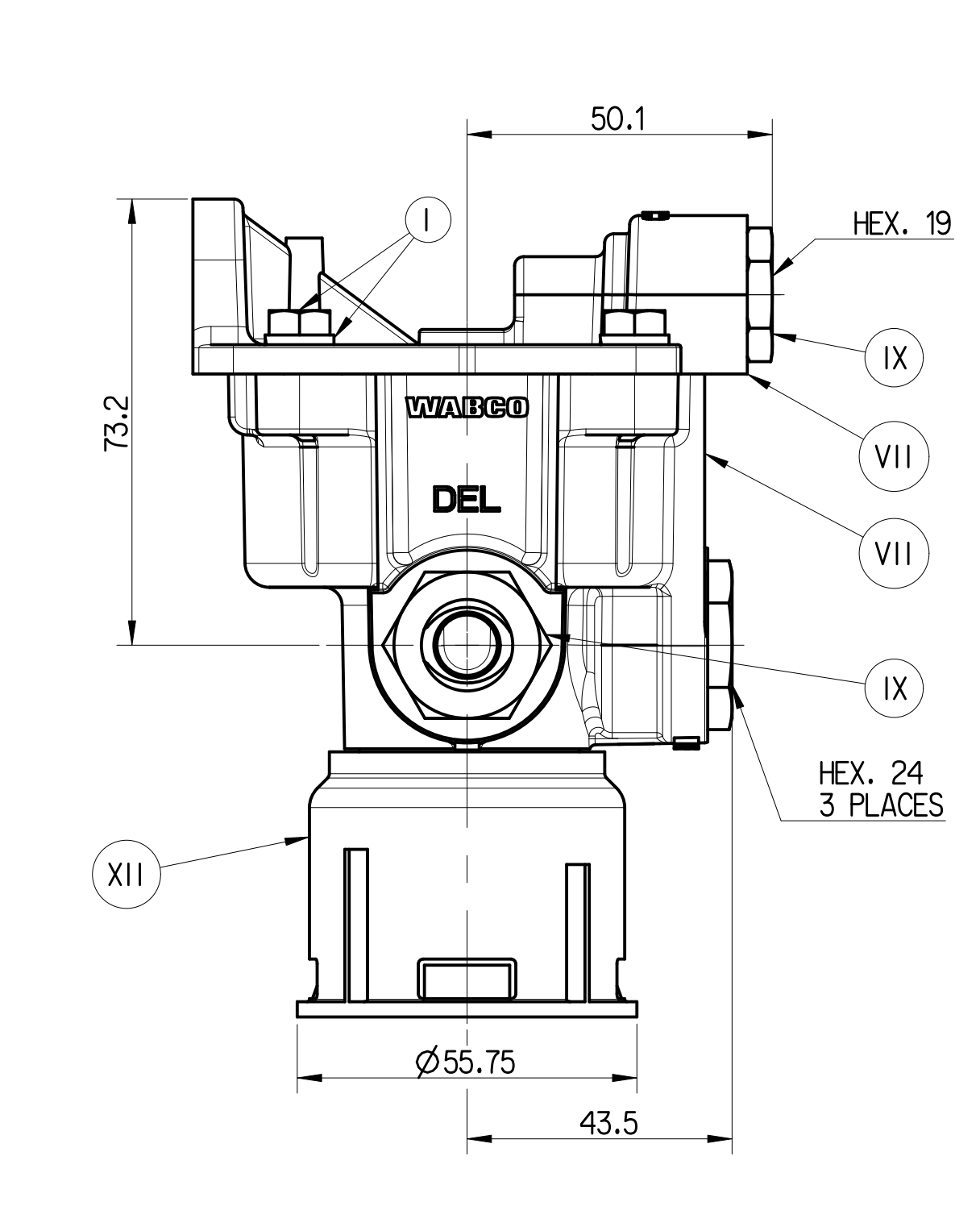
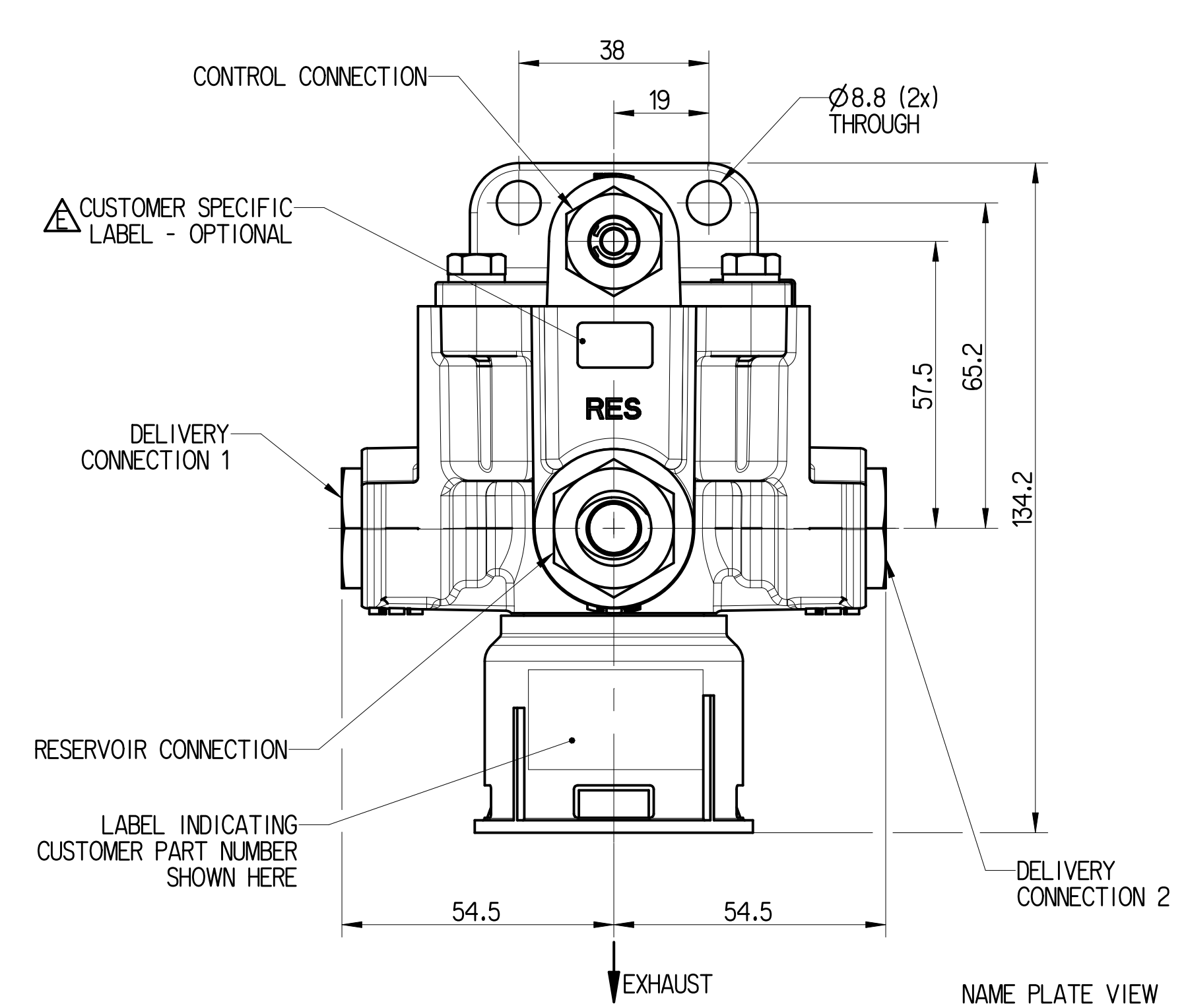


MSP 3/94 REPAIR KIT CONSISTS OF ITEMS SHOWN

S.No.	PART No.	DESCRIPTION	QTY
1	897 980 323 4	O-RING	1
2	895 226 706 4	RETAINING CLIP	1
3	895 370 005 4	SPRING ELEMENT	1
4	897 980 104 4	O-RING	1
5	897 980 133 4	O-RING	1
6	893 980 322 4	O-RING	3
7	895 226 697 4	RETAINING CLIP	3
8	895 370 004 4	SPRING ELEMENT	3
9	899 500 014 2	VALVE	1
10	896 070 110 4	VALVE SPRING	1
11	897 980 105 4	O-RING	1
12	973 298 534 2	SILENCER ASSEMBLY	1
13	899 980 000 4	VALVE GUIDE	1
14	897 980 222 4	O-RING	1
15	897 980 146 4	O-RING	3
16	897 980 153 4	O-RING	3
17	897 980 145 4	O-RING	1
18	897 980 156 4	O-RING	1
19	973 298 225 4	FILTER	1
20	M919910	GREASE SACHET	1

PART No. 8951800024 AND 8979802304 PROVIDED IN THE KIT TO STANDARDISE THE REPAIR KIT FOR RELAY VALVE VARIANTS.



Sl. No.	TECHNICAL DATA
1	WORKING MEDIUM AIR
2	THERMAL RANGE OF APPLICATION -40°C TO +80°C
3	NORMAL WORKING PRESSURE 10 bar
4	MAXIMUM WORKING PRESSURE (TEMP) 13 bar
5	NOISE LEVEL AT EXHAUST 72 dB(A) MAXIMUM
6	EQUIVALENT FLOW DIAMETER 10 mm
7	QUALITY COMPLIANCE PLAN ARE CONDUCTED REGULARLY AS PER PS CLAUSE No. 15
8	SERVICE LIFE TO FIRST OVERHAUL 3 YEARS / 30000 KM WHICHEVER IS EARLIER IF FITTED AS PER RECOMMENDED LAYOUT
9	NO AIR LEAKAGE IS PERMISSIBLE AT THE JOINT BETWEEN ADAPTOR AND RELAY VALVE
10	OPEN PORTS ARE FITTED WITH CLOSURE PLUGS FOR STORAGE AND TRANSIT PURPOSES
11	INSTALLATION : REFER FIGURE S

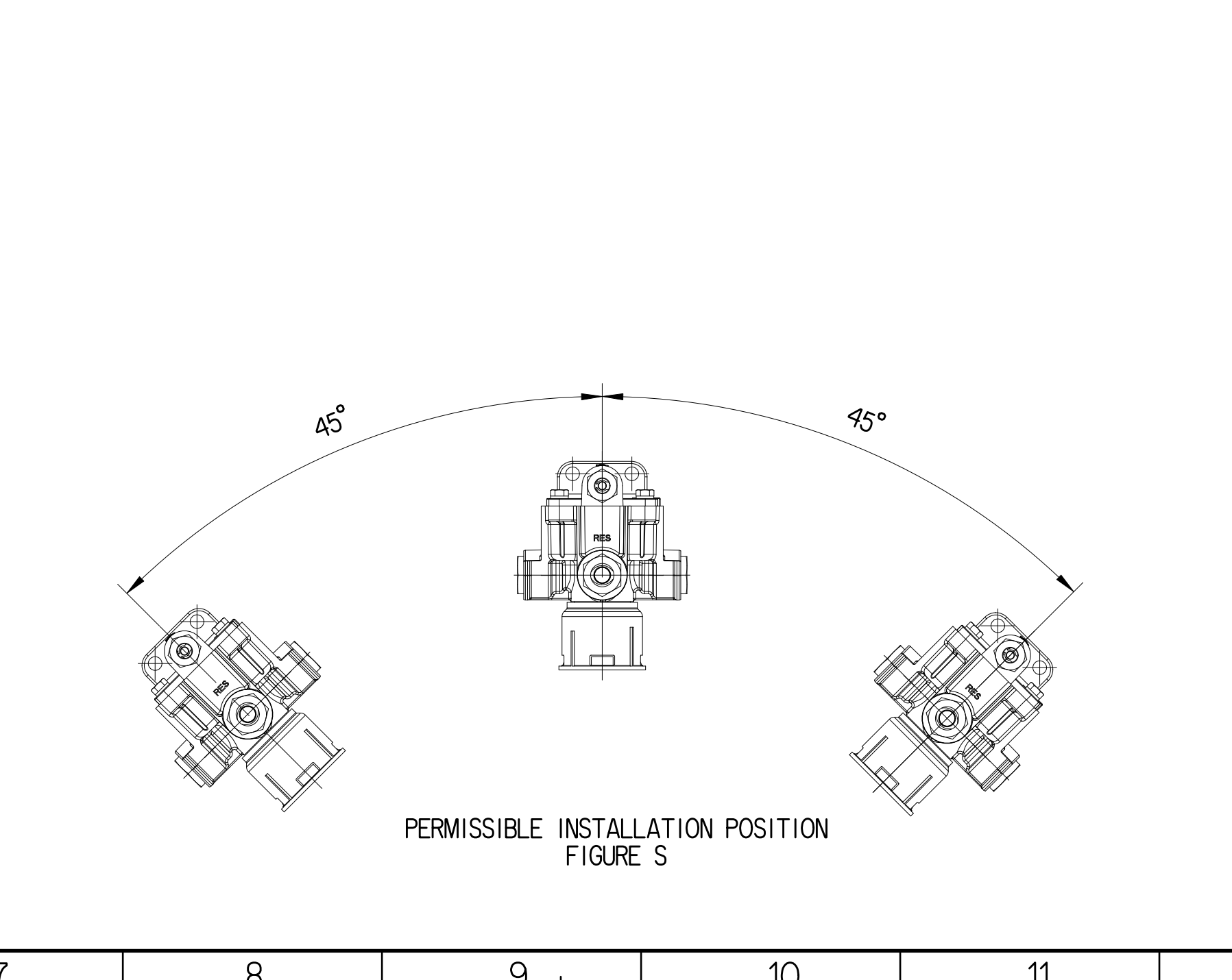
FIG V OTHER DIMENSIONS REFER BASIC DRAWING

FIG X OTHER DIMENSIONS REFER BASIC DRAWING

FIG U OTHER DIMENSIONS REFER BASIC DRAWING

FIG T OTHER DIMENSIONS REFER BASIC DRAWING

XXII	STEEL	NO TREATMENT
XXI	CAST IRON	PLATED
XV	STEEL	ZINC IRON PLATED
XIV	CAST IRON	NO TREATMENT
XIII	ZINC ALLOY	ANODISED
XII	PLASTIC	NO TREATMENT
XI	RUBBER	NO TREATMENT
X	STAINLESS STEEL	NO TREATMENT
IX	BRASS	NO TREATMENT
VIII	ZINC ALLOY	CHROMATED
VII	ALUMINUM ALLOY	ANODISED
VI	ALUMINUM ALLOY	CHROMATED
V	CAST IRON	PAINTED
IV	STEEL	POWDER COATED
III	STEEL	PAINTED
II	STEEL	PHOSPHATED
I	STEEL	ZINC PLATED
PART CODE	MATERIAL	SURFACE PROTECTION



PART No.	RESERVOIR CONNECTION	CONTROL CONNECTION	DELIVERY CONNECTION 1	DELIVERY CONNECTION 2	FIG. REFERENCE	WEIGHT (kg)	CUSTOMER PART No.
973 298 018 0	M22x1.5 TO SUIT VOSS PLUG IN SYSTEM 230. TORQUE 10±1 Nm	M16x1.5 TO SUIT VOSS PLUG IN SYSTEM 230. TORQUE 10±1 Nm	M22x1.5 TO SUIT VOSS PLUG IN SYSTEM 230. TORQUE 10±1 Nm	M22x1.5 TO SUIT VOSS PLUG IN SYSTEM 230. TORQUE 10±1 Nm	BASIC DRAWING	0.638	NA
973 298 097 0	M22x1.5 TO SUIT VOSS PLUG IN SYSTEM 230. TORQUE 10±1 Nm	M16x1.5 TO SUIT VOSS PLUG IN SYSTEM 230. TORQUE 10±1 Nm	M18x1.5 TORQUE 37.5±2.5 Nm	M22x1.5 TO SUIT VOSS PLUG IN SYSTEM 230. TORQUE 10±1 Nm	FIG T	0.691	NA
973 298 028 0	M22x1.5 TO SUIT VOSS PLUG IN SYSTEM 230. TORQUE 10±1 Nm	M16x1.5 TO SUIT VOSS PLUG IN SYSTEM 230. TORQUE 10±1 Nm	PLUGGED AS CAST	M22x1.5 TO SUIT VOSS PLUG IN SYSTEM 230. TORQUE 10±1 Nm	FIG U	0.610	NA
973 298 099 0	M22x1.5 TO SUIT VOSS PLUG IN SYSTEM 230. TORQUE 10±1 Nm	M16x1.5 TO SUIT VOSS PLUG IN SYSTEM 230. TORQUE 10±1 Nm	M22x1.5 TORQUE 50.5±2.5 Nm	M22x1.5 TORQUE 50.5±2.5 Nm	FIG V	0.575	NA
973 298 124 0	M22x1.5 TO SUIT VOSS PLUG IN SYSTEM 230. TORQUE 10±1 Nm	M16x1.5 TO SUIT VOSS PLUG IN SYSTEM 230. TORQUE 10±1 Nm	PLUGGED AS CAST	M18x1.5 TORQUE 37.5±2.5 Nm	FIG X	0.664	NA
973 298 101 0	M22x1.5-DEEP 13 TORQUE 50.5±2.5 Nm	M14x1.5-DEEP 12 TORQUE 23.5±1.5 Nm	M16x1.5-DEEP 12 TORQUE 32.5±1.5 Nm	M16x1.5-DEEP 12 TORQUE 32.5±1.5 Nm	FIG Y	0.477	NA
973 298 103 0	M22x1.5-DEEP 13 TORQUE 50.5±2.5 Nm	M14x1.5-DEEP 12 TORQUE 23.5±1.5 Nm	M16x1.5-DEEP 12 TORQUE 32.5±1.5 Nm	M16x1.5-DEEP 12 TORQUE 32.5±1.5 Nm	FIG Z	0.517	NA

Class	1	2	3	4	5	6	7	8	9	10	11	12	13	14	15	16	17	18	19	20	21	22	23	24
Size	10	12	15	20	25	32	40	50	63	80	100	125	160	200	250	315	400	500	630	800	1000	1250	1600	2000
Scale	1:1	1:1	1:1	1:1	1:1	1:1	1:1	1:1	1:1	1:1	1:1	1:1	1:1	1:1	1:1	1:1	1:1	1:1	1:1	1:1	1:1	1:1	1:1	

General Specification: ISO 8016, ED-534-1, Size ISO 14405 LP

Further Technical Data: 973 298 018 0

Doc. Code: 026

2026-03-19

2026-03-20

RELAY VALVE, RG2

973 298 018 0

005 EN 1/1