

1 2 3 4 5 6 7 8

A

B

C

D

A

B

C

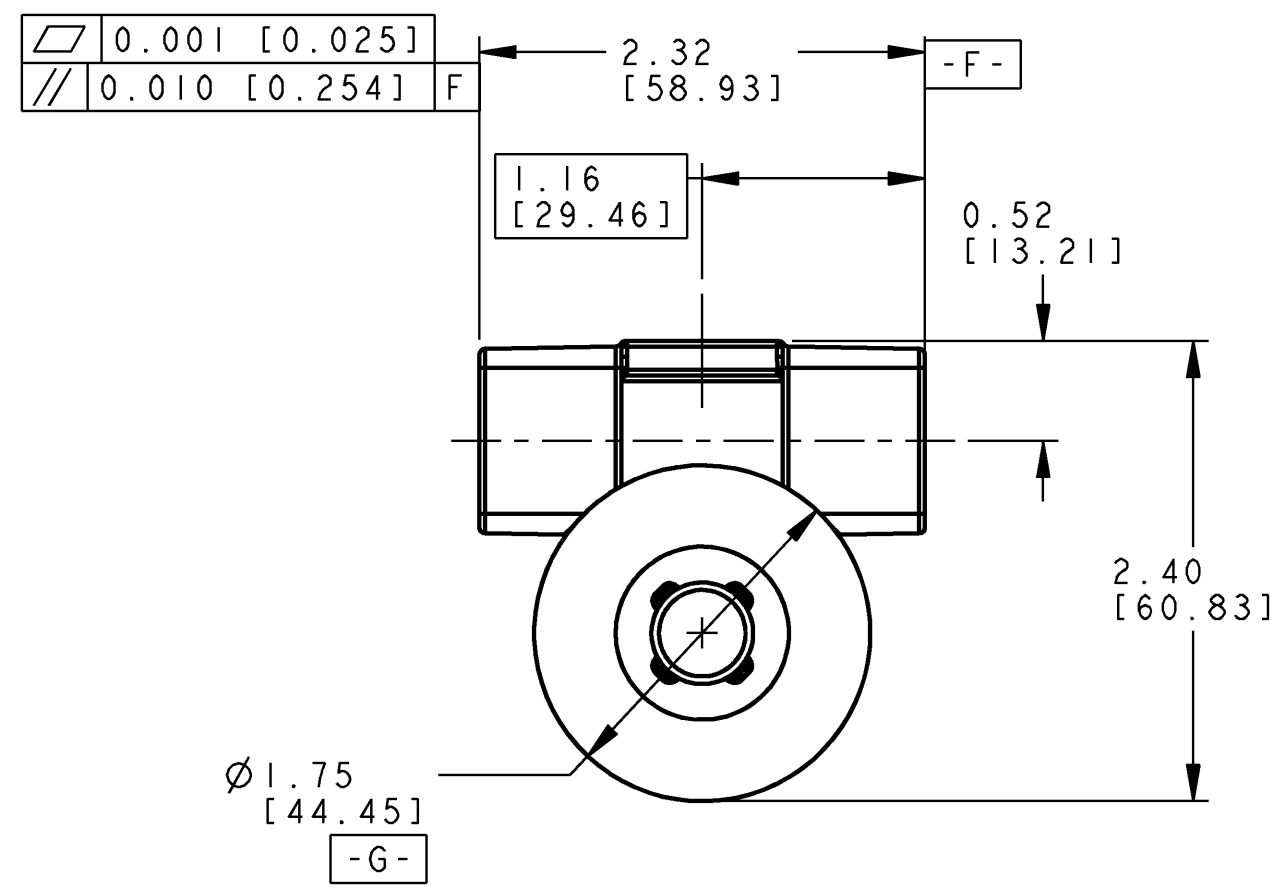
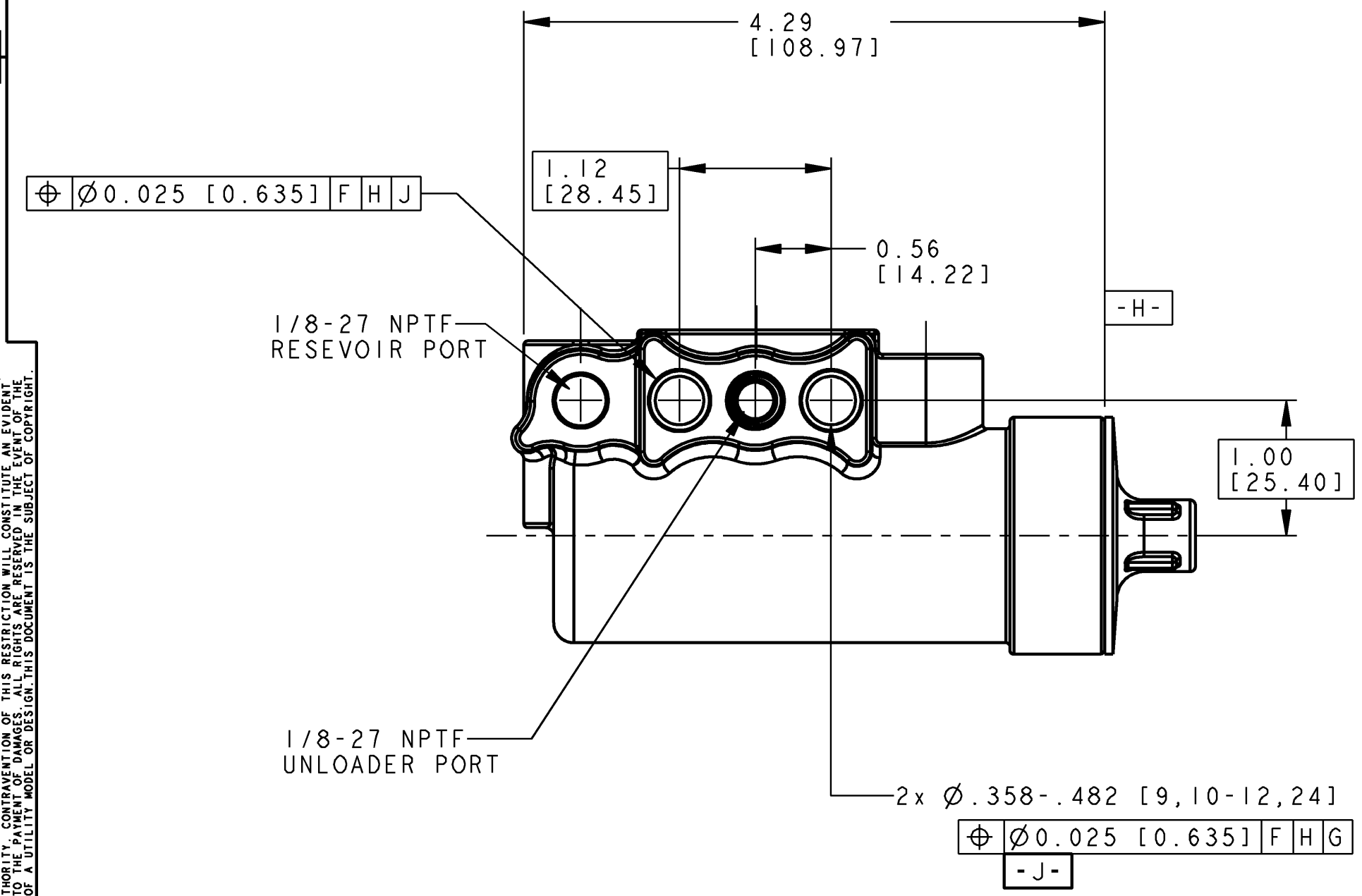
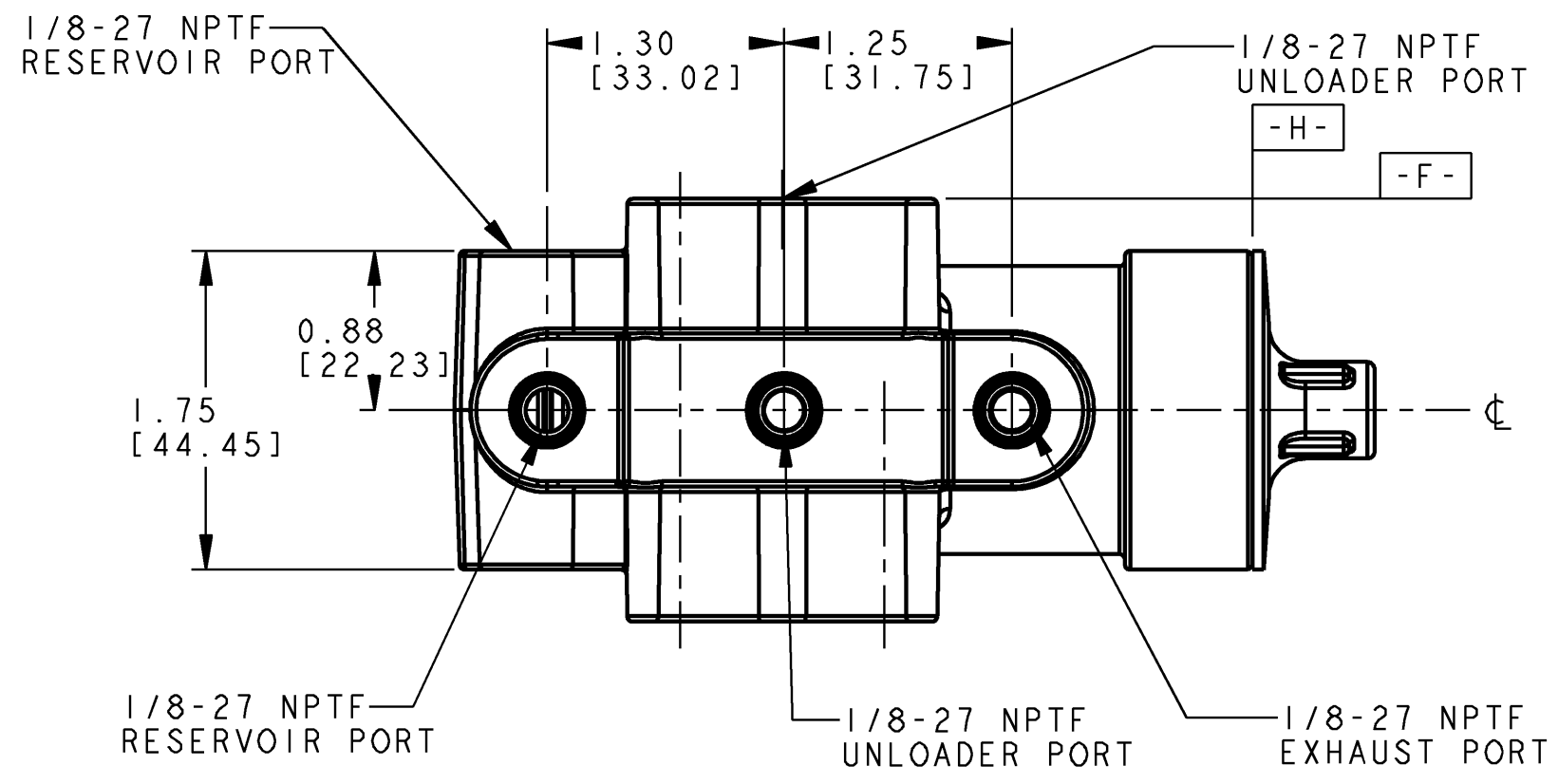
D

E

F

NOTES:

- 1) CUT-OUT PRESSURE  
8.96<sup>+.35</sup><sub>-0</sub> BAR [130<sup>+5</sup><sub>-0</sub> PSI]  
RANGE 1.55±0.52 BAR [22.5 ±7.5 PSI]
- 2) TEMPERATURE RANGE:  
-40°C TO 121.11°C  
[-40°F TO 250°F]
- 3) LEAKAGE TO COMPLY WITH: SAE J1410, 5.2
- 4) PARTS TO BE IDENTIFIED WITH MERITOR WABCO  
NAME, PART NUMBER, DATE OF MANUFACTURE,  
AND COUNTRY OF ORIGIN.
- 5) GOVERNOR PACKED IN A SEALED BAG WITH FOUR  
PIPE PLUGS.
- 6) ITEM IDENTIFICATION MUST INCLUDE  
PART NUMBER (975 499 016 0)



COPYING OF THIS DOCUMENT AND GIVING IT TO OTHERS AND THE USE OR COMMUNICATION OF THE CONTENTS THEREOF, WITHOUT THE WRITTEN PERMISSION OF MERITOR WABCO, IS PROHIBITED. ANY SUCH ACT SHALL BE CONSIDERED A VIOLATION OF THE PATENT RIGHTS OF MERITOR WABCO AND WILL BE SUBJECT TO THE FULL FORCE OF THE LAW. THE USER OF THIS DOCUMENT AGREES TO HOLD MERITOR WABCO HARMLESS FROM ANY AND ALL DAMAGES, INCLUDING REASONABLE ATTORNEY'S FEES, THAT MAY BE INCURRED BY MERITOR WABCO AS A RESULT OF SUCH VIOLATION. THE USER OF THIS DOCUMENT AGREES TO HOLD MERITOR WABCO HARMLESS FROM ANY AND ALL DAMAGES, INCLUDING REASONABLE ATTORNEY'S FEES, THAT MAY BE INCURRED BY MERITOR WABCO AS A RESULT OF SUCH VIOLATION. THE USER OF THIS DOCUMENT AGREES TO HOLD MERITOR WABCO HARMLESS FROM ANY AND ALL DAMAGES, INCLUDING REASONABLE ATTORNEY'S FEES, THAT MAY BE INCURRED BY MERITOR WABCO AS A RESULT OF SUCH VIOLATION.

			SOLID MODEL DRAWING METRIC IN MM		<b>MERITOR WABCO</b> Vehicle Control Systems	
			DATE	SIGNATURE		
			DRAWN:			
			08/29/11 CAMPBELL			
			CHECKED:			
			08/29/11 DIFALCO			
			RELEASE:			
			09/19/11			
			MASS	SCALE	PRODUCT IDENTIFICATION NO.	
			KG	1.0	975 499 016 0	
			SIZE	T.R.I.	EDC CODE DOC CODE SHEET	
			A 2	120	9122 005 1/1	
DCN-NO.			REV.	DATE	DESIGN GROUP	SHAPE CODE
					CB	
			100mm		REPLACEMENT FOR	
			EXPERT CODE		PRODUCT TYPE	
					<input checked="" type="checkbox"/>	