

PART No. M250792 etc GA

ENGINEERING CHANGES

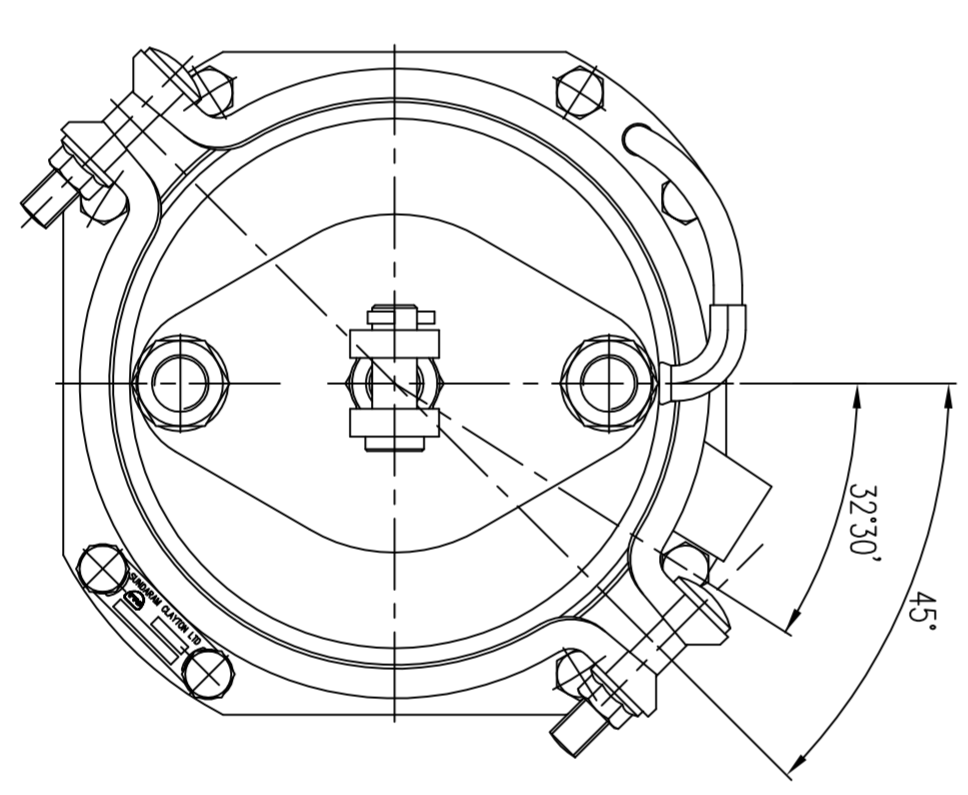
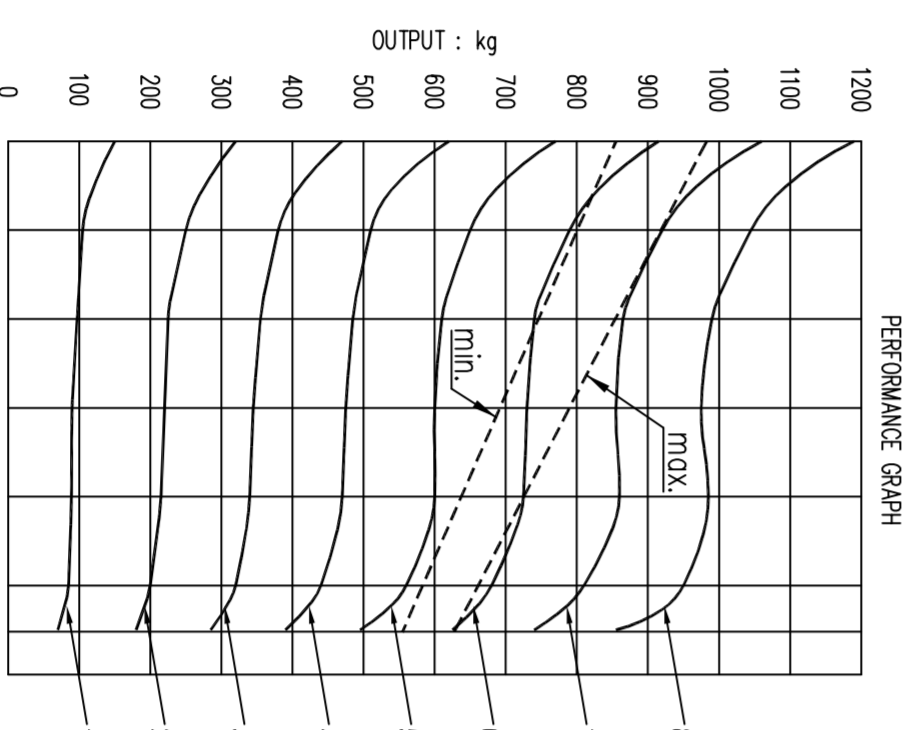
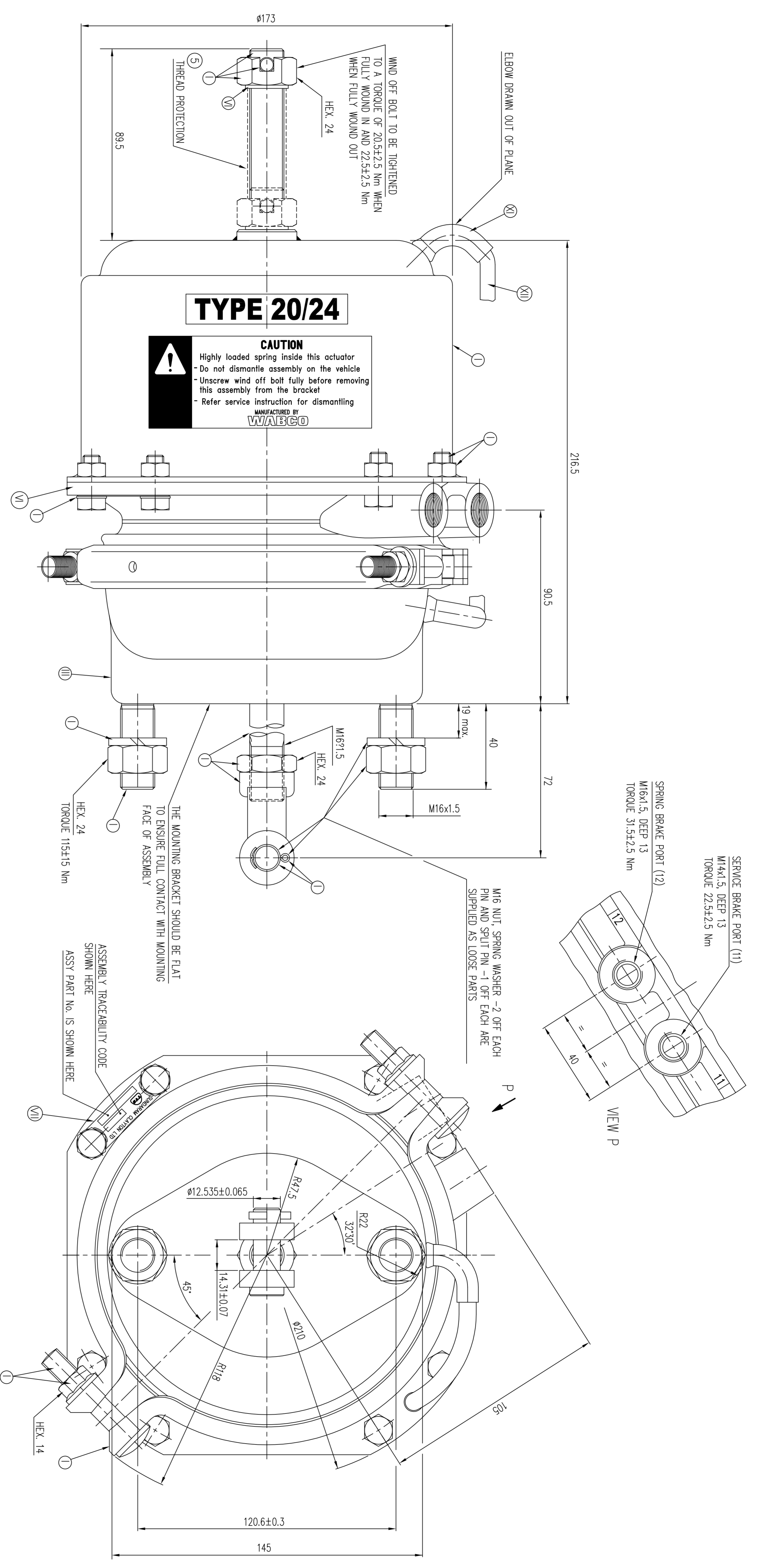
ECN No.	DATE	REV	SIGN
846814.08.01	N	KPN	
9386	19.6.04	1	RA

Drawing pictorially modified inline with name plate. Washer - 2 off added. PSSC revision No. and date updated. Mount in end wound out torque 18-22 Nm and 22.5±2.5 Nm were 18-22 Nm and 22.5±2.5 Nm respectively. Dimension indication changed to nominal and bilateral tolerance from upper and lower limits. Drawing redrawn.

9864 7.07.05 2 ASK
Type identification in forge deleted.
10007 06.04.08 3 ASK
DW 40 was 34. Special Characteristics removed. Drawing redrawn. RBS Drawing length 140. WABCO was WABCO-TNS (India) Ltd. Drawing pictorially modified inline with parts. Drawing redrawn.

12609 20.08.13 5 KSK
Note added regarding "Thread protection". Drawing redrawn.

DO NOT SCALE IF IN DOUBT ASK



PART No.	PORT POSITION	REMARKS
M250792	BASIC DRG	RH
M250802	FIGURE T	LH

PRODUCT SPECIFICATION No. PSSC 109C
(ISSUE No. 2, DATED 03.04.02)
WEIGHT: 8.9 kg (APPROX)
SERVICE BRAKE : TYPE 20 STROKE : 57mm min.
SPRING BRAKE : TYPE 24 (CYLINDER Ø168mm) STROKE : 57mm min.
HOLD OFF PRESSURE: 4.2 ±0.4 bar
OPEN PORTS ARE FITTED WITH CLOSURE PLUGS FOR STORAGE AND TRANSIT PURPOSES

WABCO
AMBATTUR, CHENNAI - 600058, INDIA

XII	PLASTIC	NO TREATMENT
XI <th>RUBBER</th> <th>NO TREATMENT</th>	RUBBER	NO TREATMENT
X <th>STAINLESS STEEL</th> <th>NO TREATMENT</th>	STAINLESS STEEL	NO TREATMENT
IX <th>BRASS</th> <th>NO TREATMENT</th>	BRASS	NO TREATMENT
VIII <th>ZINC ALLOY</th> <th>CHROMATED</th>	ZINC ALLOY	CHROMATED
VII <th>ALUMINIUM ALLOY</th> <th>ANODISED</th>	ALUMINIUM ALLOY	ANODISED
VI <th>ALUMINIUM ALLOY</th> <th>CHROMATED</th>	ALUMINIUM ALLOY	CHROMATED
V <th>CAST IRON</th> <th>PAINTED</th>	CAST IRON	PAINTED
IV <th>STEEL</th> <th>POWDER COATED</th>	STEEL	POWDER COATED
III <th>STEEL</th> <th>PAINTED</th>	STEEL	PAINTED
II <th>STEEL</th> <th>PHOSPHATED</th>	STEEL	PHOSPHATED
I <th>STEEL</th> <th>ZINC PLATED</th>	STEEL	ZINC PLATED

SIGN	DATE	MATERIAL
BRN	07.08.13	ALTERNATE MATERIAL
CHD	07.08.13	SURFACE PROTECTION
APD	07.08.13	RAW PART No.

CONFIDENTIAL DRAWING

THIS DRAWING IS THE SOLE PROPERTY OF WABCO. IT SHOULD NOT BE COPIED OR COMMUNICATED TO ANY PERSON WITHOUT THE WRITTEN APPROVAL OF WABCO. © 2001

UNLESS OTHERWISE SPECIFIED ALL DIMENSIONS IN mm

REMOVE EDGES AND SHARP EDGES FROM FINISHED PARTS
ALL DIMENSIONS ARE IN THE SURFACE PROTECTION / TREATMENT
MALE THREAD TO IS 1482 (Part 3) Br : 2001
FEMALE THREAD TO IS 1482 (Part 3) Br : 2001

GENERAL TOLERANCES			
RANGE OF NOMINAL DIMENSIONS (+/- mm)	1	2	3
≤ 50	±0.10	±0.15	±0.20
> 50 ≤ 180	±0.15	±0.20	±0.25
> 180 ≤ 400	±0.20	±0.25	±0.30
> 400	±0.25	±0.30	±0.35

SCALE 1 : 1

SPRING BRAKE ACTUATOR
(TYPE 20/24)

PART No. M250792 etc GA