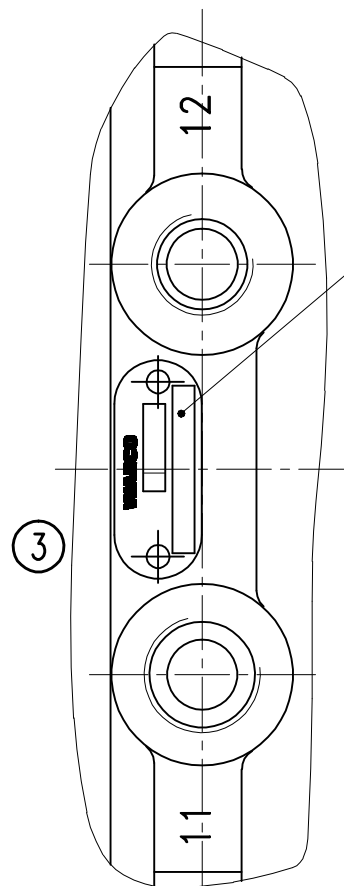


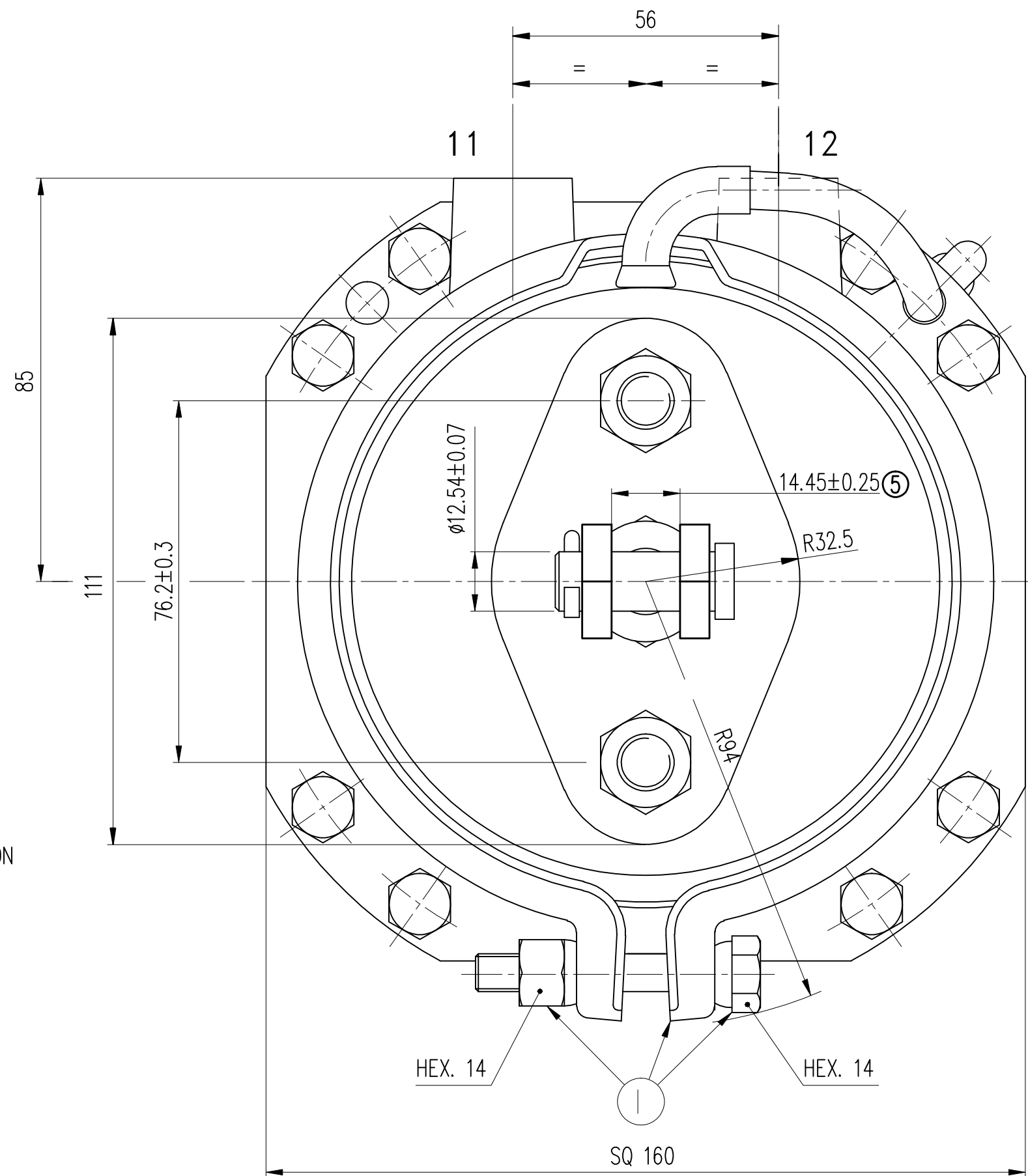
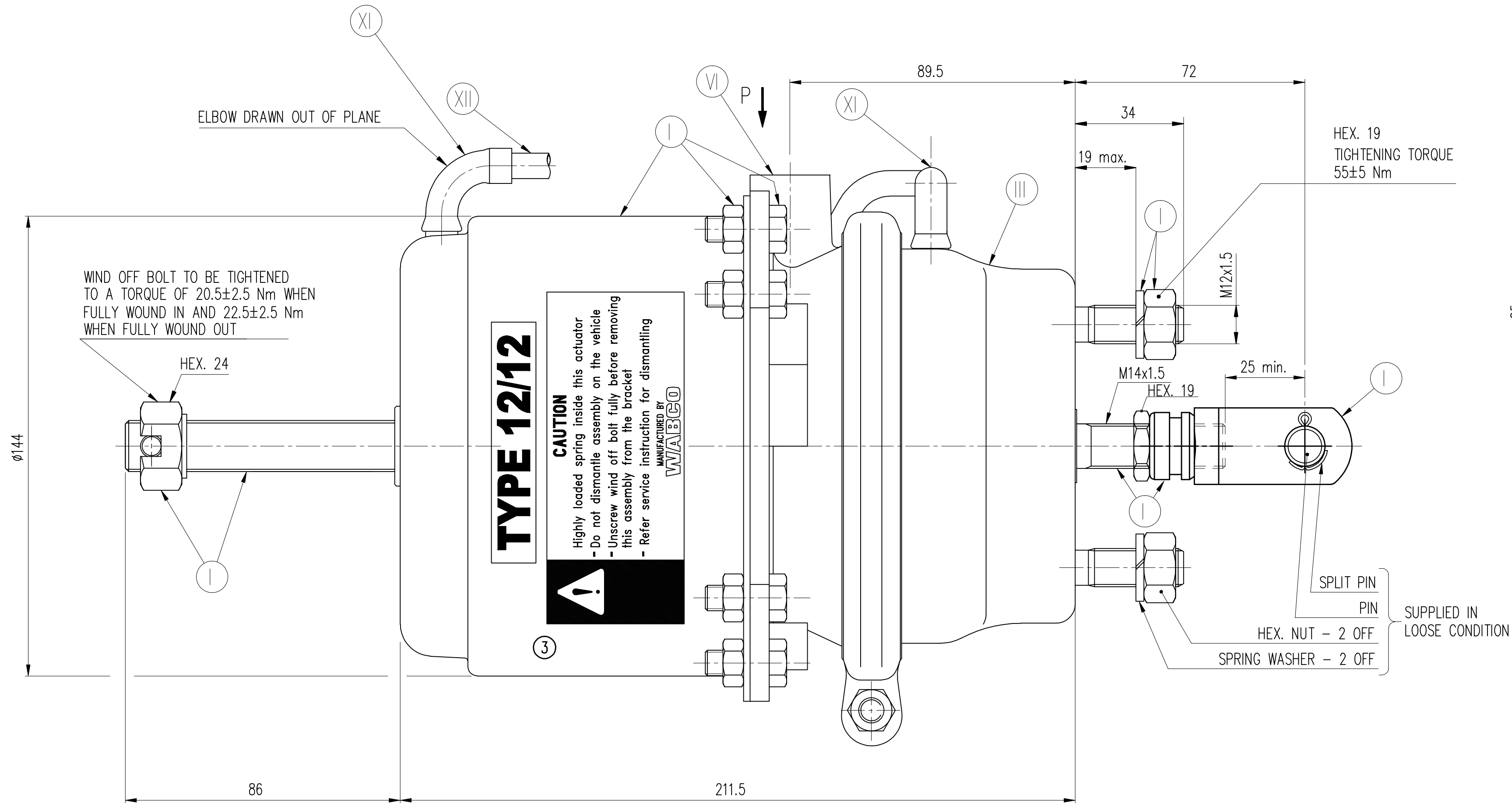
PART No.				
M 250830				
ENGINEERING CHANGES				
ECN No.	DATE	REV	SIGN	
7971	14-10-99	NEW		
8201	19-7-2000	1		
Supplied in loose condition note added. Drawing redrawn.				
8375	12.4.2001	2		
Surface protection details added. Drawing redrawn.				
9657	23.02.05	3	ASK	
Type Identification in flange deleted.				
Type Identification label added.				
PSSC issue No. and date added.				
Tightening torque for wind up bolt when fully wound out 22.5±2.5 Nm was 15-32 Nm.				
Dimension indication changed to nominal and bilateral tolerance from upper and lower limits. Drawing redrawn.				
11203	28.06.08	4	GJ	
Dim 26.8 was 30. Drawing redrawn.				
11304	21.01.09	5	GJ	
Drawing pictorially modified inline with fab assembly. Dim 26.8 deleted. Dim 14.45±0.25 was 14.31±0.07. Drawing redrawn.				
12083	16.03.11	3	RBS	
Drawing template WABCO was WABCO-TVS (India) Ltd. Drawing pictorially modified inline with parts. Drawing redrawn.				

DO NOT SCALE IF IN DOUBT ASK



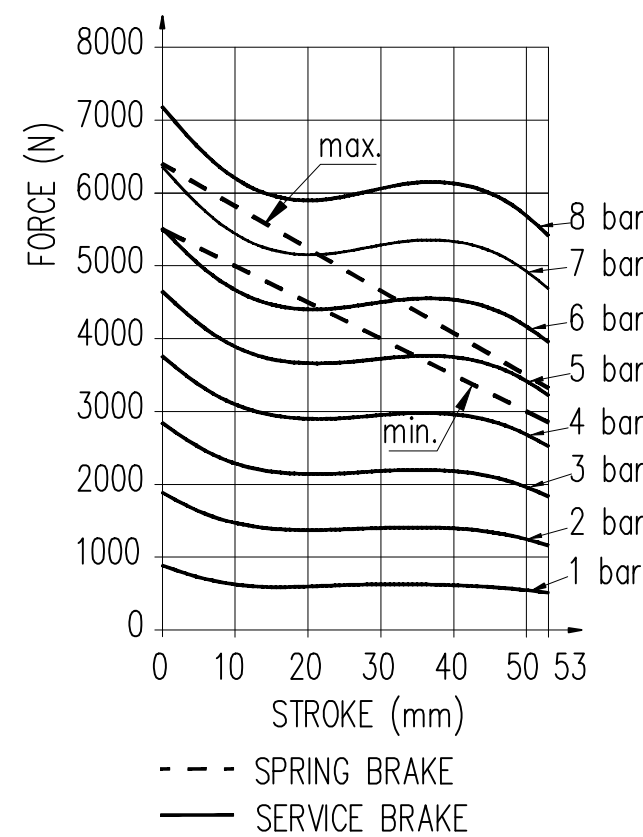
VIEW P

ASSY PART No. AND DATE OF MANUFACTURE
ARE SHOWN HERE



CAUTION

PERFORMANCE GRAPHS



XVI	STEEL	NO TREATMENT
XV	CAST IRON	PLATED
XV	STEEL	ZINC-IRON PLATED
XIV	CAST IRON	NO TREATMENT
XIII	ZINC ALLOY	ANODISED
XII	PLASTIC	NO TREATMENT
XI	RUBBER	NO TREATMENT
X	STAINLESS STEEL	NO TREATMENT
IX	BRASS	NO TREATMENT
VIII	ZINC ALLOY	CHROMATED
VI	ALUMINIUM ALLOY	ANODISED
V	ALUMINIUM ALLOY	CHROMATED
V	CAST IRON	PAINTED
IV	STEEL	POWDER COATED
III	STEEL	PAINTED
II	STEEL	PHOSPHATED
I	STEEL	ZINC PLATED
PART CODE	MATERIAL	SURFACE PROTECTION

● CRITICAL
● MAJOR
NO SYMBOL - MINOR


CONFIDENTIAL DRAWING

THIS DRAWING IS THE SOLE PROPERTY OF WABCO. IT SHOULD NOT BE COPIED OR COMMUNICATED TO ANY PERSON WITHOUT THE WRITTEN APPROVAL OF WABCO. © 1999

UNLESS OTHERWISE SPECIFIED ALL DIMENSIONS IN mm

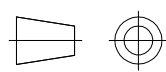
REMOVE BURRS AND SHARP EDGES FROM FINISHED PARTS
ALL DIMENSIONS ARE AFTER SURFACE PROTECTION / TREATMENT

MALE THREAD TO IS 14962 (Part 3) 6h : 2001
FEMALE THREAD TO IS 14962 (Part 3) 6H : 2001

GENERAL TOLERANCES						
RANGE OF NOMINAL DIMENSIONS (\pm mm)					FORCE, POWER, PRESSURE etc.,	
\pm 50	\pm 50 180	\pm 180 400	\pm 400		(\pm %)	(\pm %)
1	2	3	4	3	10	
100 mm						

SCALE

1 : 1

**WABCO**

AMBATTUR, CHENNAI - 600058, INDIA

SPRING BRAKE ACTUATOR

(TYPE 12/12)

PART No.

M 250830

GA