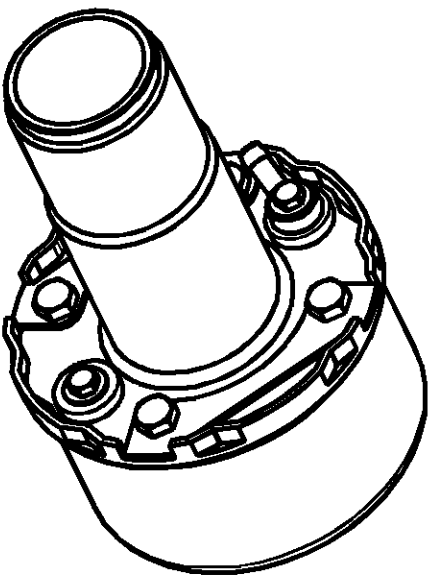
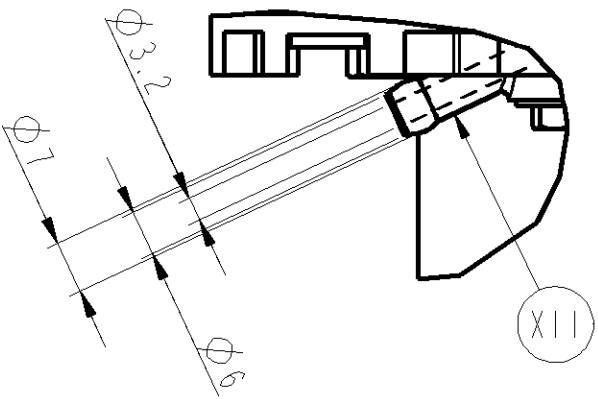


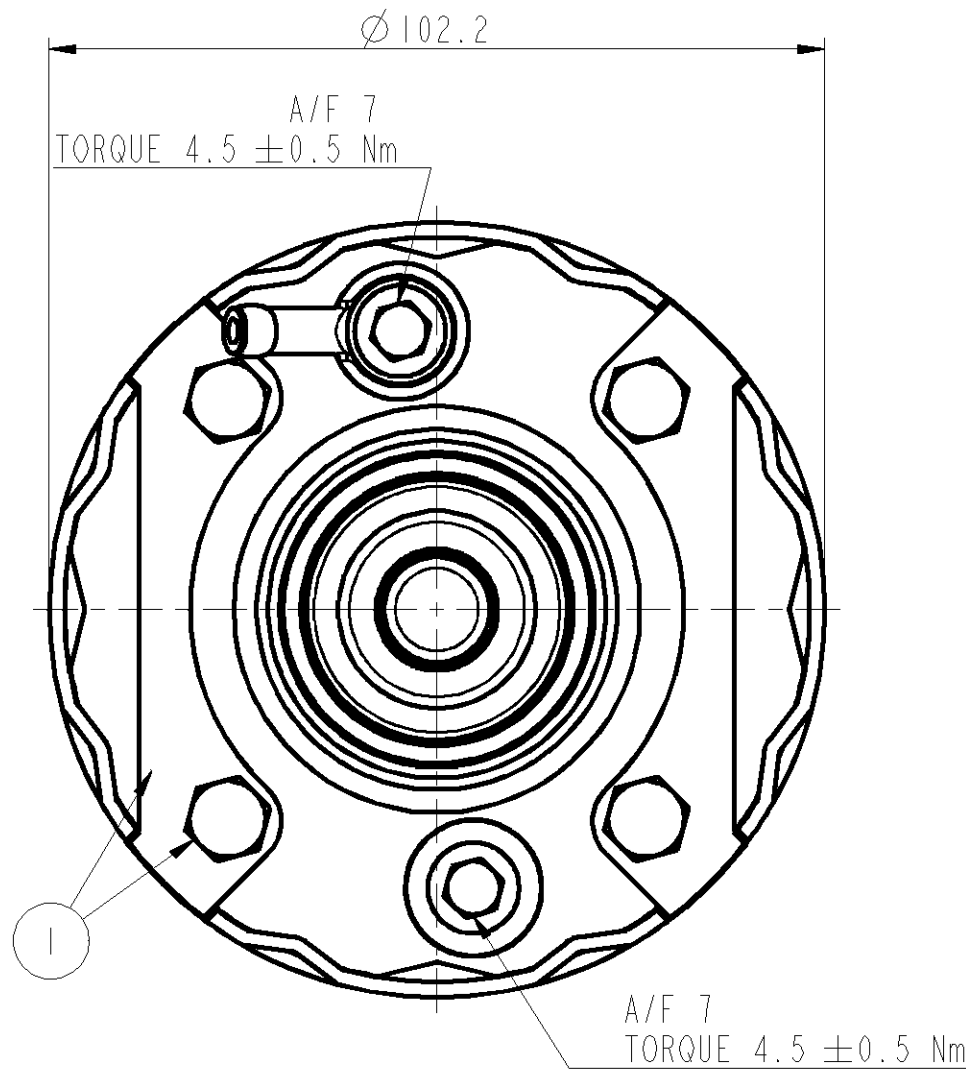
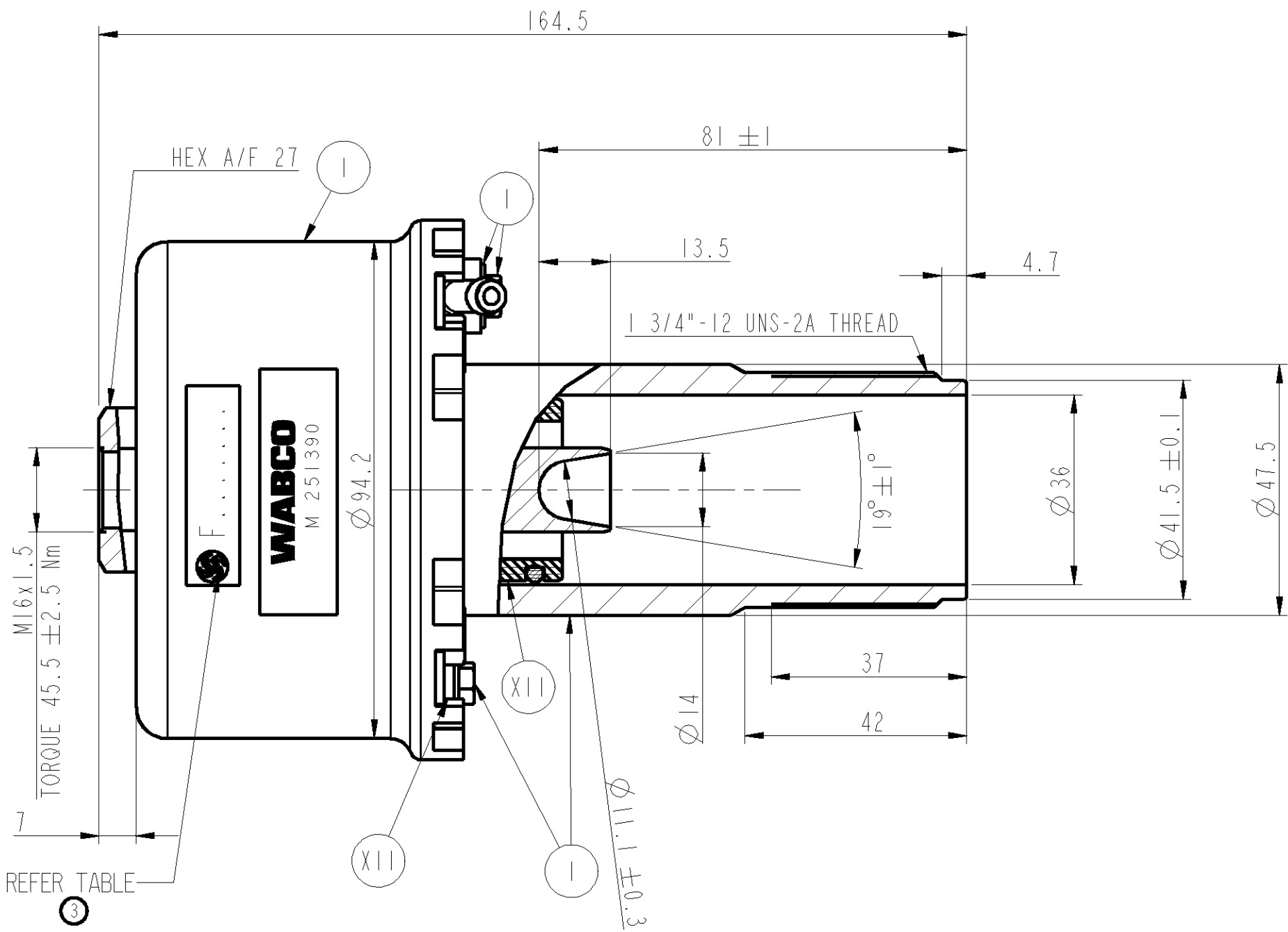
GA

DO NOT SCALE IF IN DOUBT ASK

| ENGINEERING CHANGES | | | | |
|---|----------|-----|------|--|
| ECN No. | DATE | REV | SIGN | |
| 9234 | 26.11.03 | NEW | RA | |
| 11374 | 09.02.09 | 1 | RBS | |
| In label, CD-TVS monogram was TVS monogram. Sundaram Clayton Ltd deleted. WABCO-TVS (INDIA) Ltd added. Drawing redrawn. | | | | |
| 12083 | 16.03.11 | 2 | RBS | |
| Drawing template WABCO was WABCO-TVS (INDIA) Ltd. Drawing pictorially modified inline with parts. Drawing redrawn. | | | | |
| 12325 | 02.05.12 | 3 | SATH | |
| NSS hours reviewed and updated. Customer part label added. Drawing redrawn. | | | | |



SCALE 1:2




CUSTOMER PART No. REFER TABLE

| | | |
|--------------|-----------------|---|
| XVII | STEEL | ED COATING |
| XVI | STEEL | NO TREATMENT |
| XV | CAST IRON | PLATED |
| XIV | CAST IRON | NO TREATMENT |
| XIII | ZINC ALLOY | ANODISED |
| XII | PLASTIC | NO TREATMENT |
| XI | RUBBER | NO TREATMENT |
| X | STAINLESS STEEL | NO TREATMENT |
| IX | BRASS | NO TREATMENT |
| VIII | ZINC ALLOY | CHROMATED |
| VII | ALUMINIUM ALLOY | ANODISED |
| VI | ALUMINIUM ALLOY | CHROMATED |
| V | CAST IRON | PAINTED |
| IV | STEEL | POWDER COATED |
| III | STEEL | PAINTED |
| II | STEEL | PHOSPHATED |
| I | STEEL | ZINC OR ZINC IRON PLATED WITH PASSIVATION |
| PART CODE | MATERIAL | SURFACE PROTECTION |

● CRITICAL
● MAJOR
NO SYMBOL - MINOR

CUSTOMER PART No.: F8289600

| | | | | | | | | | | | | |
|------|------|----------|--------------------|--|--------------------|---|-------------|---|---------------------------------|---|---------|---------|
| SIGN | DATE | MATERIAL | --- | <div>CONFIDENTIAL DRAWING</div> <div>UNLESS OTHERWISE SPECIFIED ALL DIMENSION IN mm.</div> <div>THIS DRAWING IS THE SOLE PROPERTY OF WABCO. IT SHOULD NOT BE COPIED OR COMMUNICATED TO ANY PERSON WITHOUT THE WRITTEN APPROVAL OF WABCO.</div> <div>© 2003</div> | GENERAL TOLERANCES | | | | SCALE 1:1 | <div>PART No. 1/2</div> <div>WEDGE BRAKE ACTUATOR</div> <div>M 251390</div> <div>GA</div> | | |
| DRN | SATH | 02.05.12 | ALTERNATE MATERIAL | | --- | RANGE OF NOMINAL DIMENSIONS (± mm) | |  | FORCE, POWER, PRESSURE etc., | | | |
| CHD | ASK | 02.05.12 | SURFACE PROTECTION | | REFER TABLE | ≤ 50 | ≤ 50 180 | ≥ 180 400 | > 400 | | (± °) | (± %) |
| APD | KPN | 02.05.12 | RAW PART No. | | --- | 1 | 2 | 3 | 4 | | 3 | 10 |

