

PART No.
M302920 etc

GA

ENGINEERING CHANGES

| ECN No. | DATE | REV | SIGN |
|--|----------|-----|------|
| 6804 | 18.2.94 | 1 | |
| Dimension 37.5 deleted and 1.0 added. Drawing pictorially corrected. Drawing re drawn. | | | |
| 7048 | 11-8-94 | 2 | |
| Dim 26.5 deleted and 2 mounting studs M8x1.25 deleted "M8x1.25-12 deep 2 places" added | | | |
| 7362 | 25-11-96 | 3 | |
| Base cover side view corrected inline with the supplies | | | |
| 7427 | 24-4-97 | 4 | |
| Pressure setting values and Product specification changed. Dynamic opening pressure (bar) 6.5 was 6.0 for element No 1 & 2 and 6.2 was 6.0 for element No 3 & 4. Retaining pressure (bar) 6.2, 4.3 and 6.0 were 5.7, 4.0 and 5.7 respectively. Product specification No PSSC 62C was PSSC 78C. Dimension 40.5 added. Drawing redrawn. | | | |
| 7966 | 29.9.99 | 5 | |
| Drawing pictorially modified in line with Valve body modification. Drawing redrawn | | | |
| 9232 | 22.11.03 | 6 | VT |
| Part No. M302921 newly added Surface protection and Tightening torque for port threads added. | | | |
| 9408 | 5.7.04 | 7 | MS |
| In Assy M302921, Yellow dot identification deleted and separate view A added for identification label. Drawing redrawn. | | | |
| 11374 | 09.02.09 | 8 | RBS |
| In Name plate, Company name changed from Sundaram clayton Ltd to WABCO- TVS (INDIA) Ltd. Drawing redrawn. | | | |
| 12083 | 16.03.11 | 9 | RBS |
| Drawing template WABCO was WABCO-TV (India) Ltd. Drawing pictorially modified inline with parts. Drawing redrawn. | | | |
| 12305 | 25.04.12 | 10 | GMJ |
| In Note, Corrosion resistance added regarding " 240 HOURS MINIMUM OF NSS IS APPLICABLE FOR BODY,COVER AND FASTENERS". In Product specification PSSC 62C, revision and date updated. Drawing redrawn. | | | |

| | | |
|------|-----------------|---------------|
| XII | PLASTIC | NO TREATMENT |
| XI | RUBBER | NO TREATMENT |
| X | STAINLESS STEEL | NO TREATMENT |
| IX | BRASS | NO TREATMENT |
| VIII | ZINC ALLOY | CHROMATED |
| VII | ALUMINIUM ALLOY | ANODISED |
| VI | ALUMINIUM ALLOY | CHROMATED |
| V | CAST IRON | PAINTED |
| IV | STEEL | POWDER COATED |
| III | STEEL | PAINTED |
| II | STEEL | PHOSPHATED |
| | STEEL | ZINC PLATED |

| | | |
|-----------|----------|--------------------|
| PART CODE | MATERIAL | SURFACE PROTECTION |
|-----------|----------|--------------------|

| | | | | |
|-----|------|----------|--------------------|-------------|
| | SIGN | DATE | MATERIAL | -- |
| DRN | GMJ | 25.04.12 | ALTERNATE MATERIAL | -- |
| CHD | SL | 25.04.12 | SURFACE PROTECTION | REFER TABLE |
| APD | SN | 25.04.12 | RAW PART No. | -- |

CONFIDENTIAL DRAWING
THIS DRAWING IS THE SOLE PROPERTY OF
WABCO. IT SHOULD NOT BE COPIED OR
COMMUNICATED TO ANY PERSON WITHOUT
THE WRITTEN APPROVAL OF WABCO.

© 1994

UNLESS OTHERWISE SPECIFIED
ALL DIMENSIONS IN mm
REMOVE BURRS AND SHARP EDGES
FROM FINISHED PARTS
ALL DIMENSIONS ARE AFTER SURFACE
PROTECTION / TREATMENT
MALE THREAD TO IS 14962 (Part 3) 6h : 2001
FEMALE THREAD TO IS 14962 (Part 3) 6H : 2001

| GENERAL TOLERANCES | | | | | |
|---|---------------|----------------|-------|---|--|
| RANGE OF NOMINAL DIMENSIONS (± mm) | | | | | FORCE, POWER, PRESSURE etc., (± %) |
| ≤ 50 | > 50 ≤ 180 | > 180 ≤ 400 | > 400 | | |
| 1 | 2 | 3 | 4 | 3 | 10 |

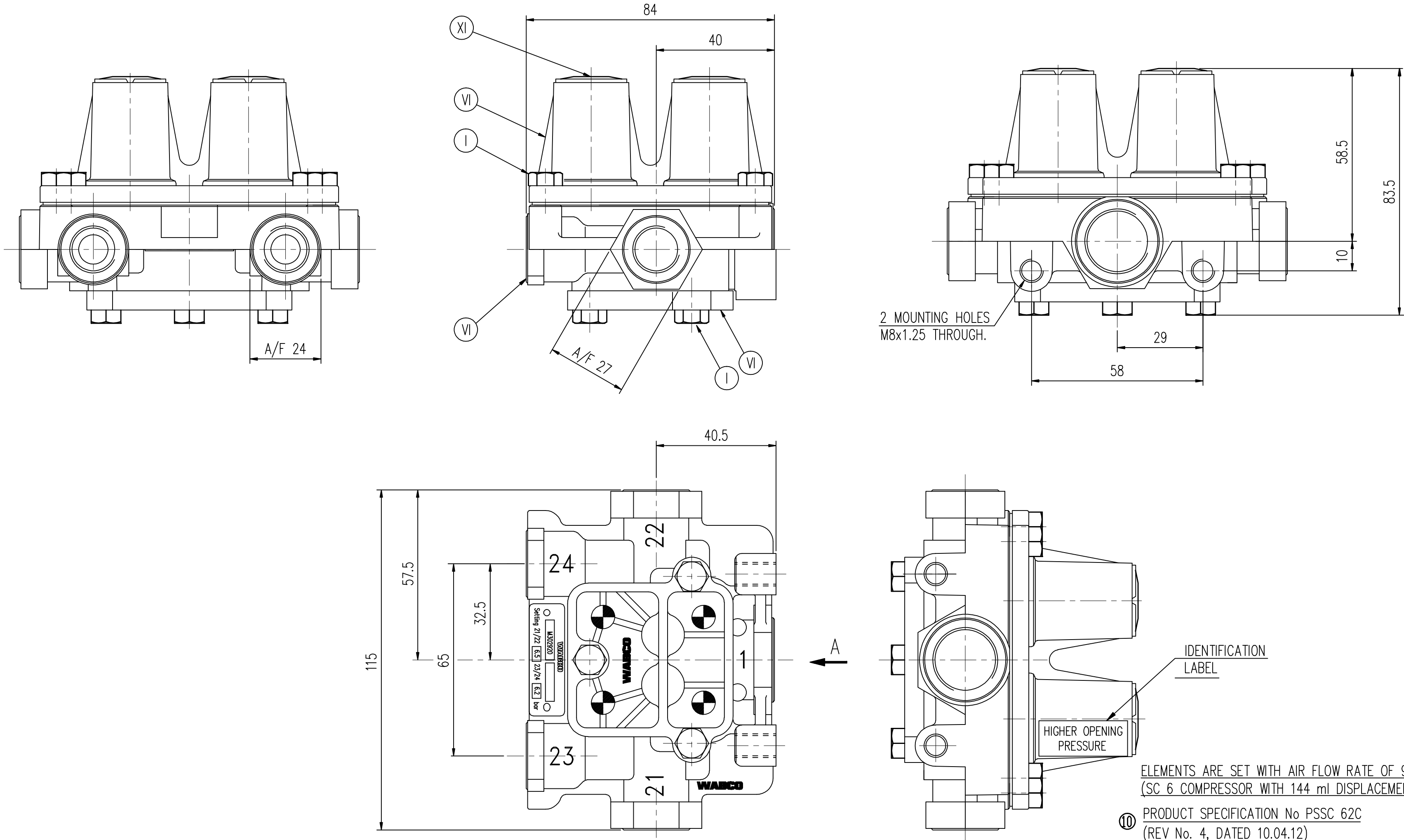
| SCALE | |
|-------|--|
| 1 : 1 | |
| | |

QUADRUPLE SYSTEM
PROTECTION VALVE

PART No.
M302920 etc

GA

DO NOT SCALE IF IN DOUBT ASK



ELEMENTS ARE SET WITH AIR FLOW RATE OF 90 NORMAL l/min
(SC 6 COMPRESSOR WITH 144 ml DISPLACEMENT AT 1000 r/min).

⑩ PRODUCT SPECIFICATION No PSSC 62C
(REV No. 4, DATED 10.04.12)

INLET PORT 1 : M22 x 1.5 DEEP 14. TORQUE 50.5±2.5 Nm
DELIVERY PORT
21, 22, 23 & 24 : M16 x 1.5 DEEP 12. TORQUE 32±2 Nm

OPEN PORTS ARE FITTED WITH CLOSURE PLUGS
FOR STORAGE AND TRANSIT PURPOSES

CORROSION RESISTANCE
⑩ 240 HOURS MINIMUM OF NSS IS APPLICABLE FOR BODY, COVER
AND FASTENERS

WABCO

AMBATTUR, CHENNAI – 600058, INDIA