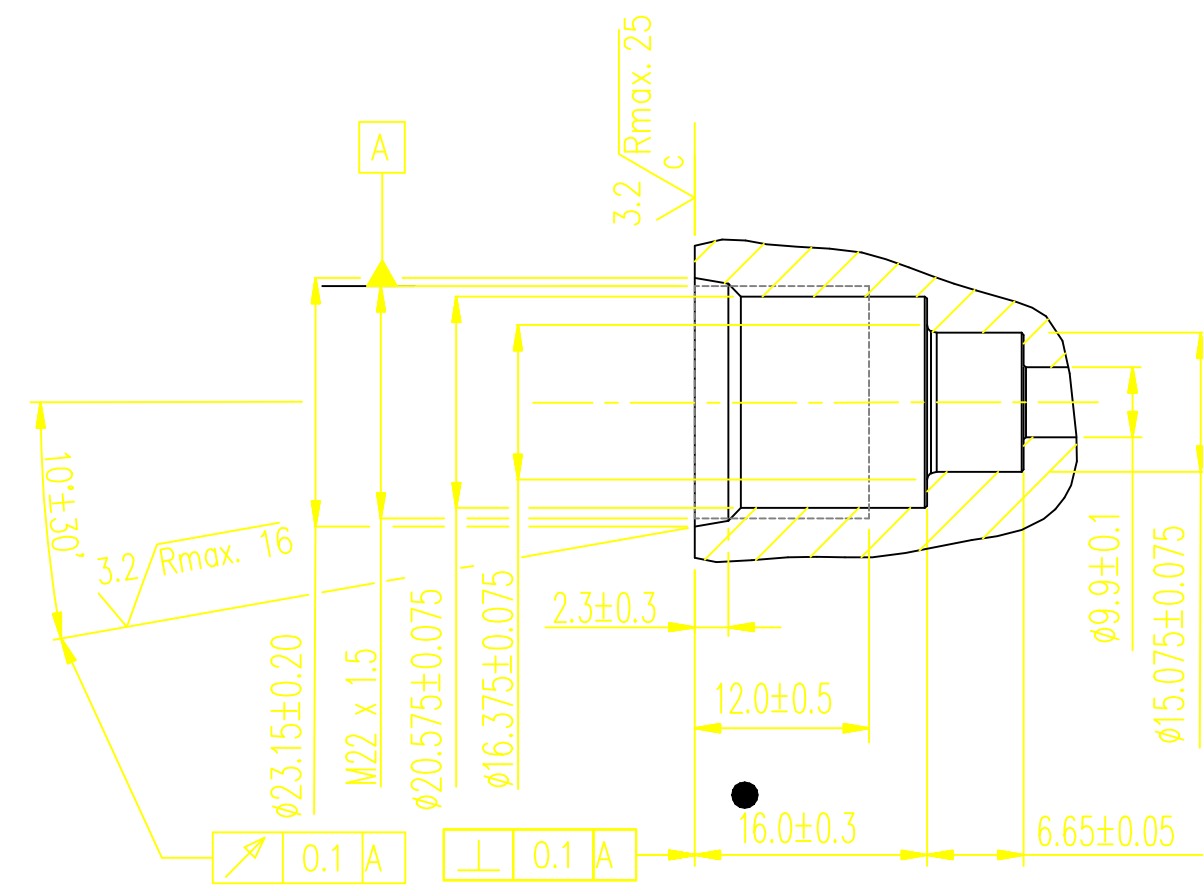
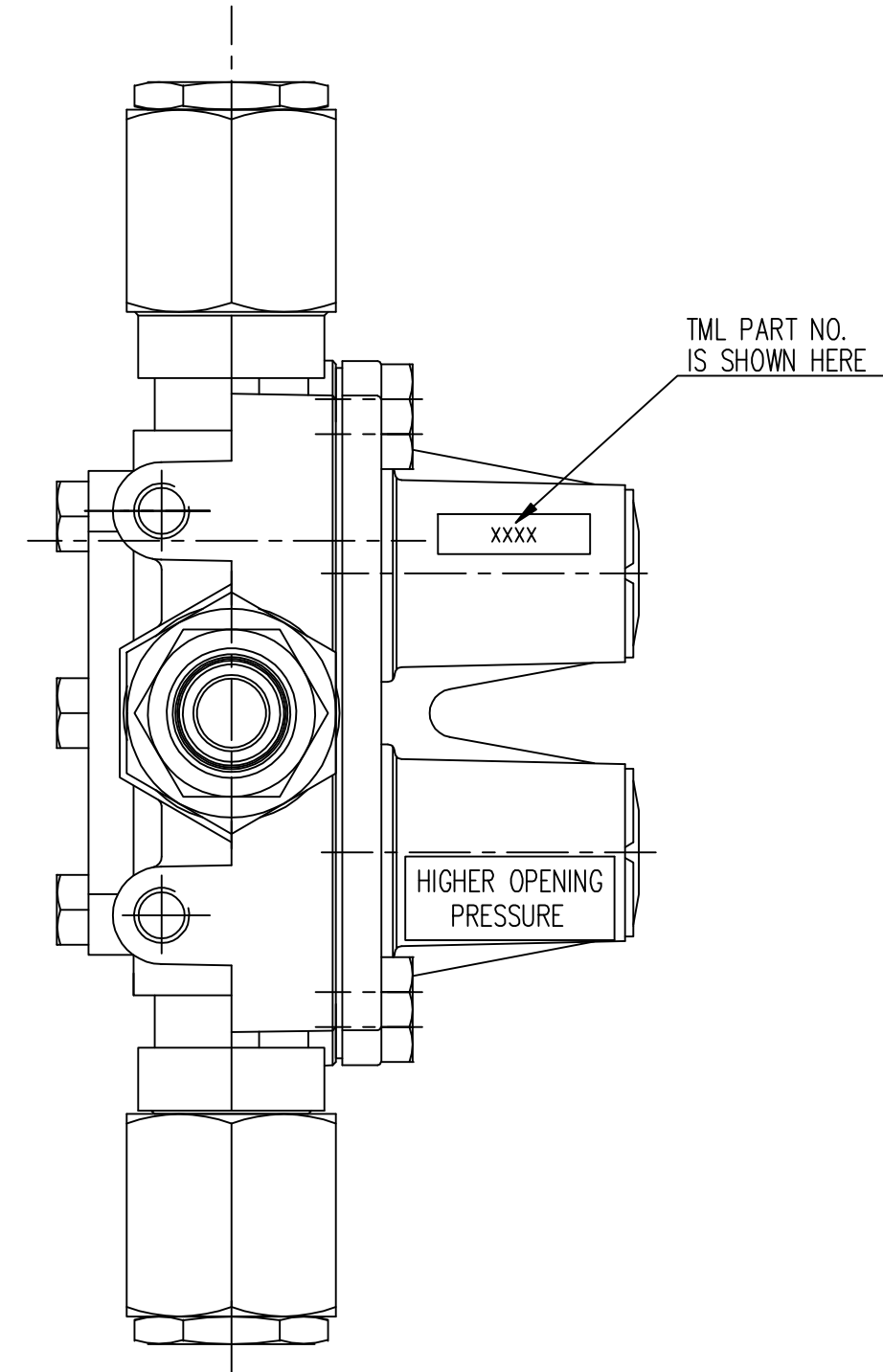
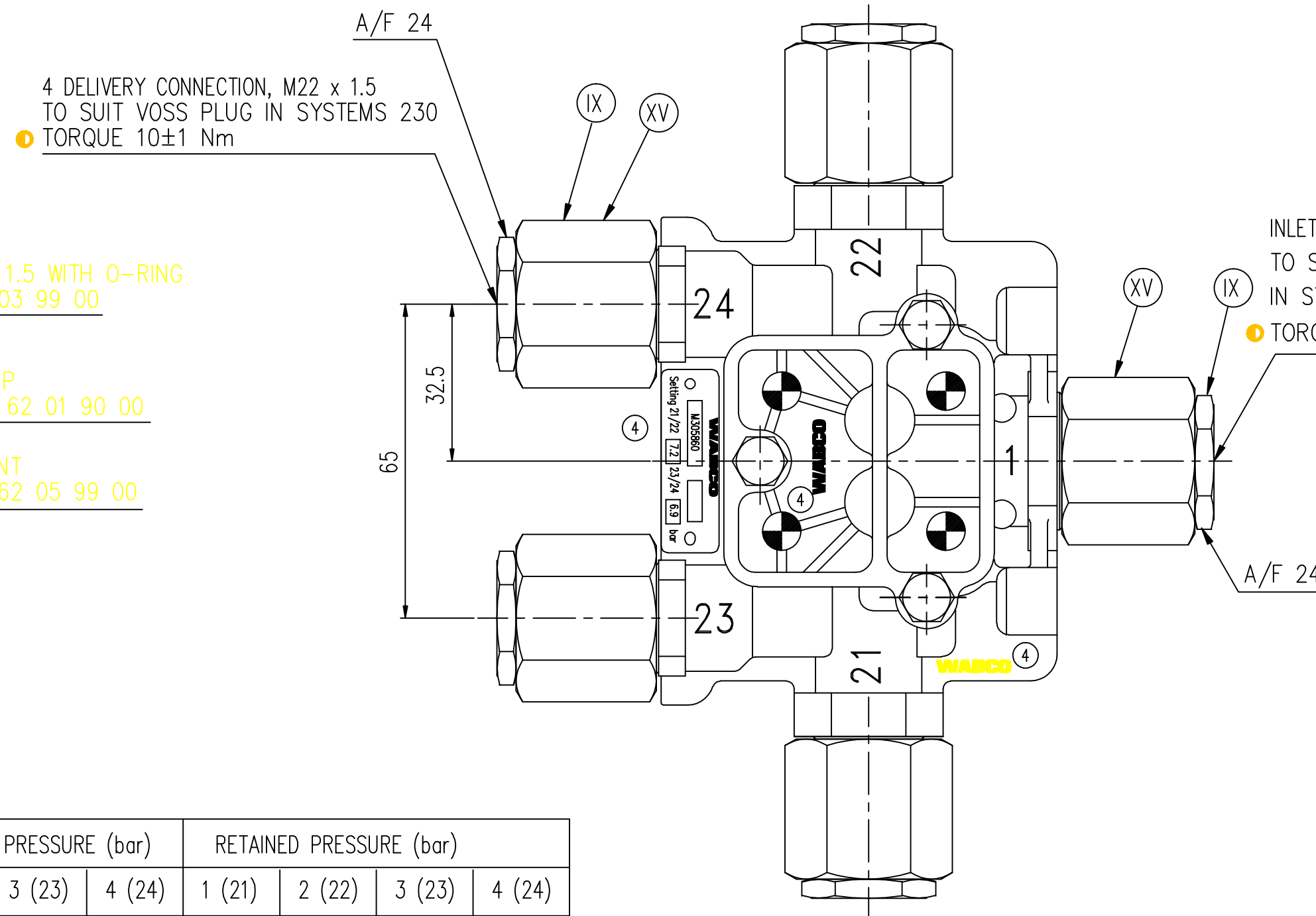
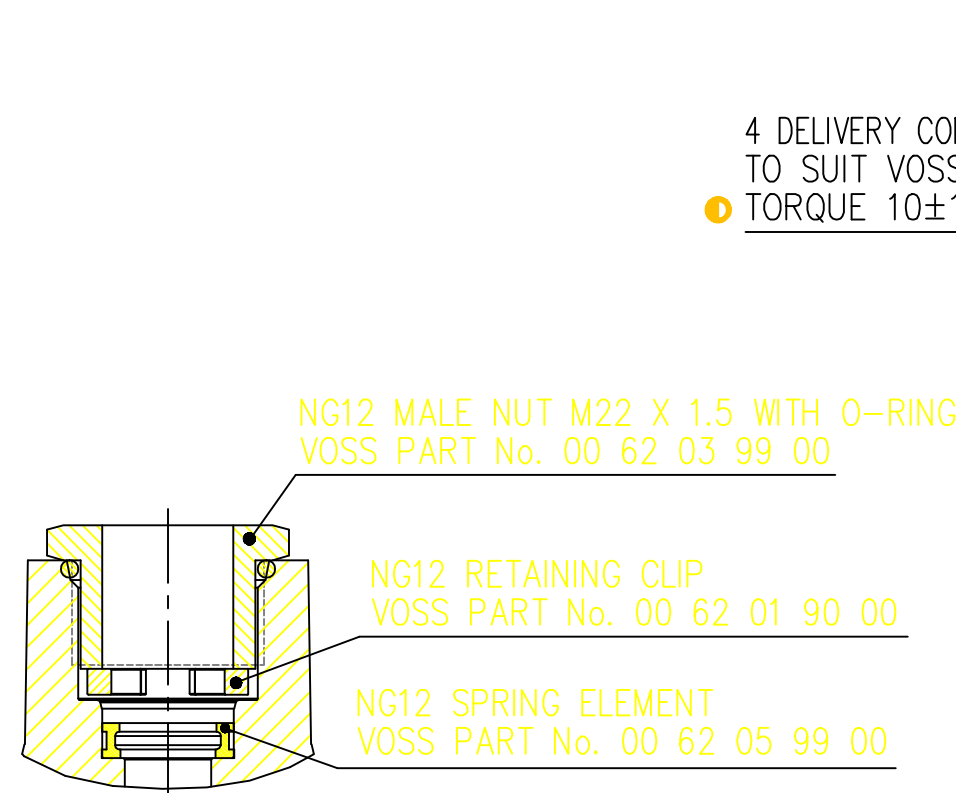
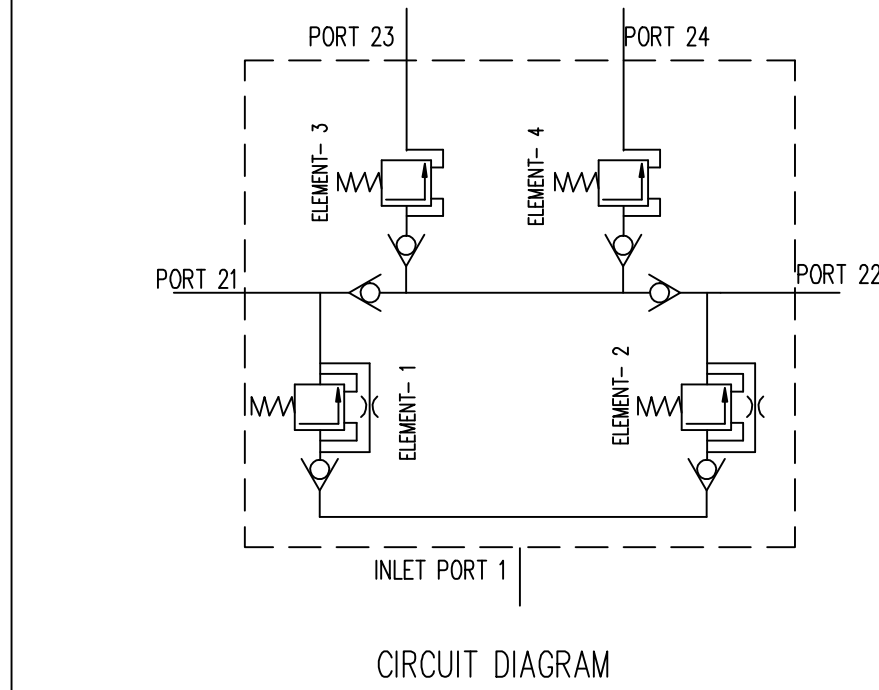
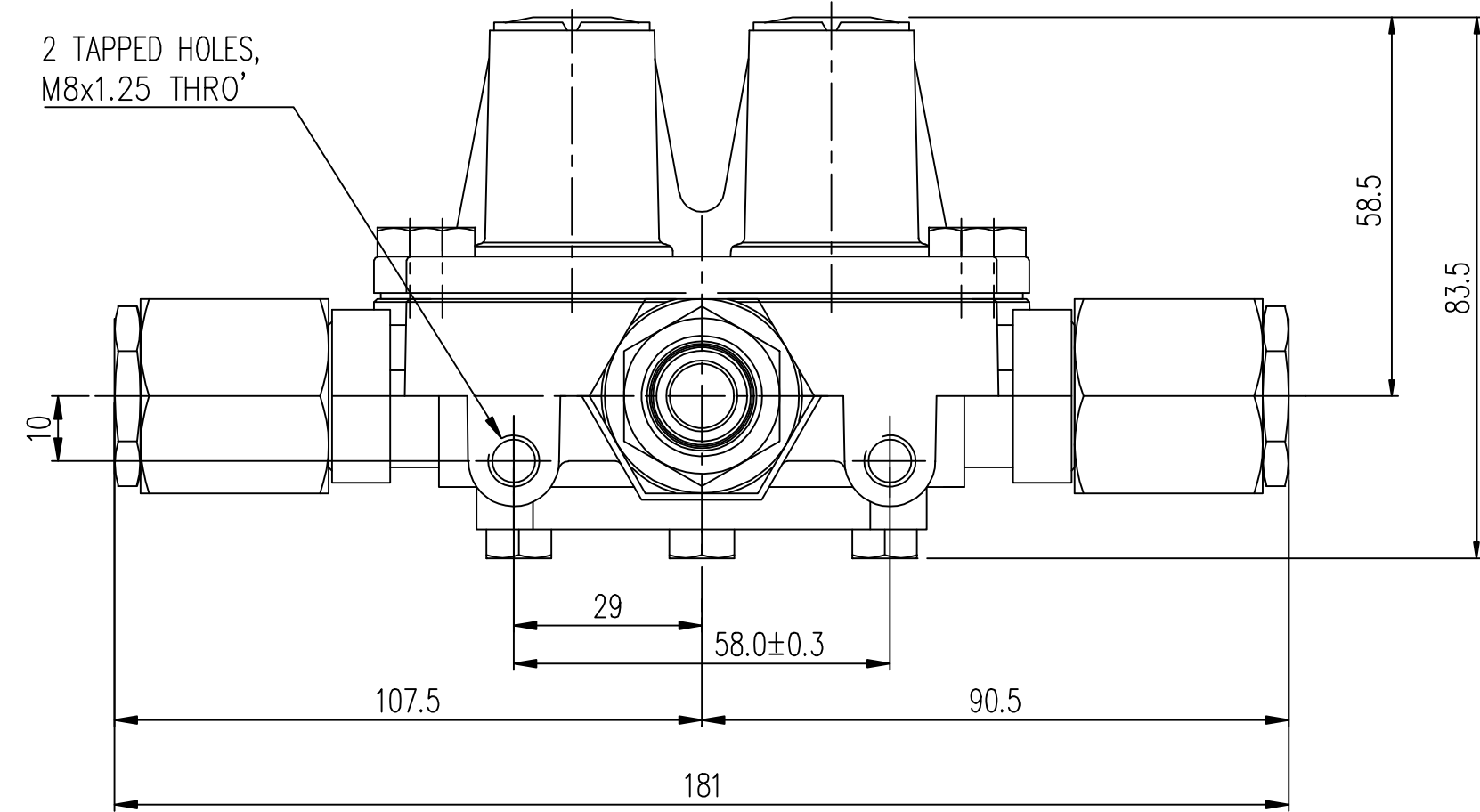
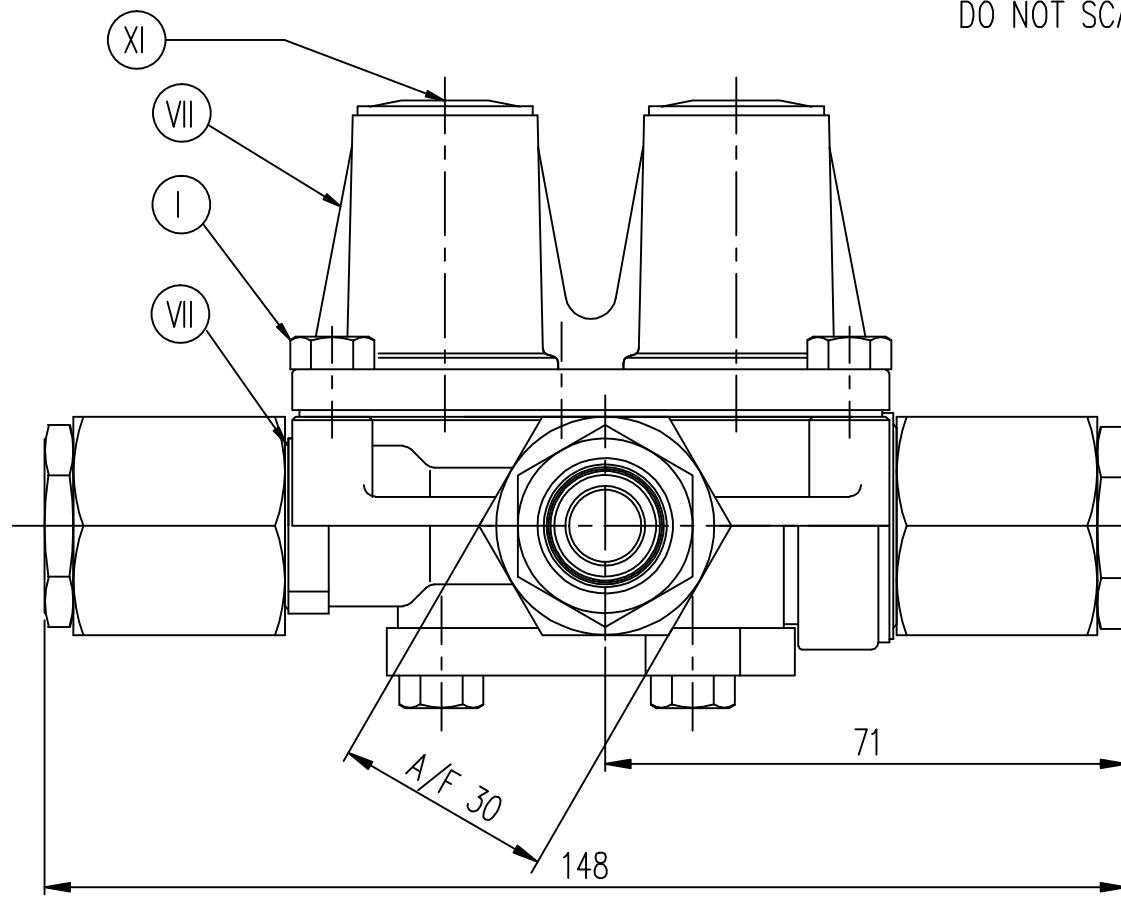
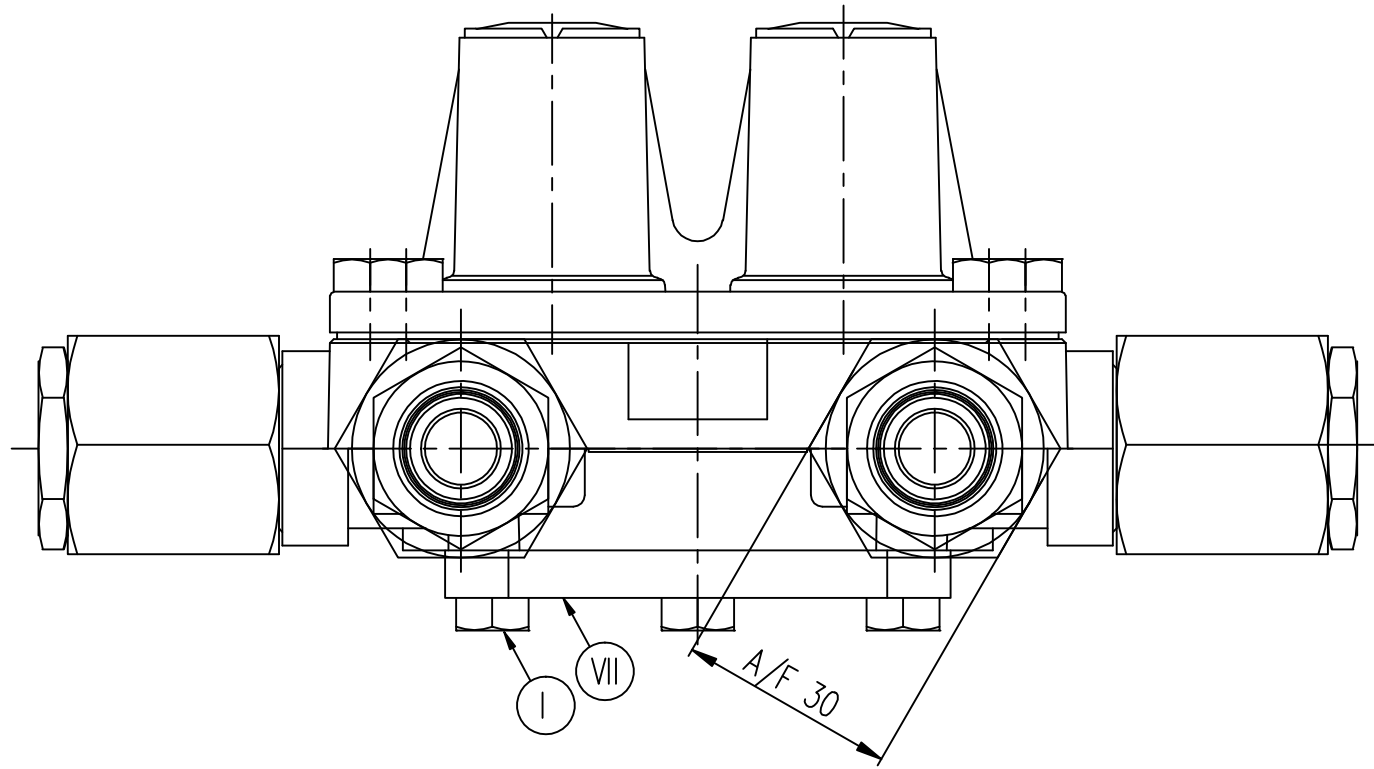
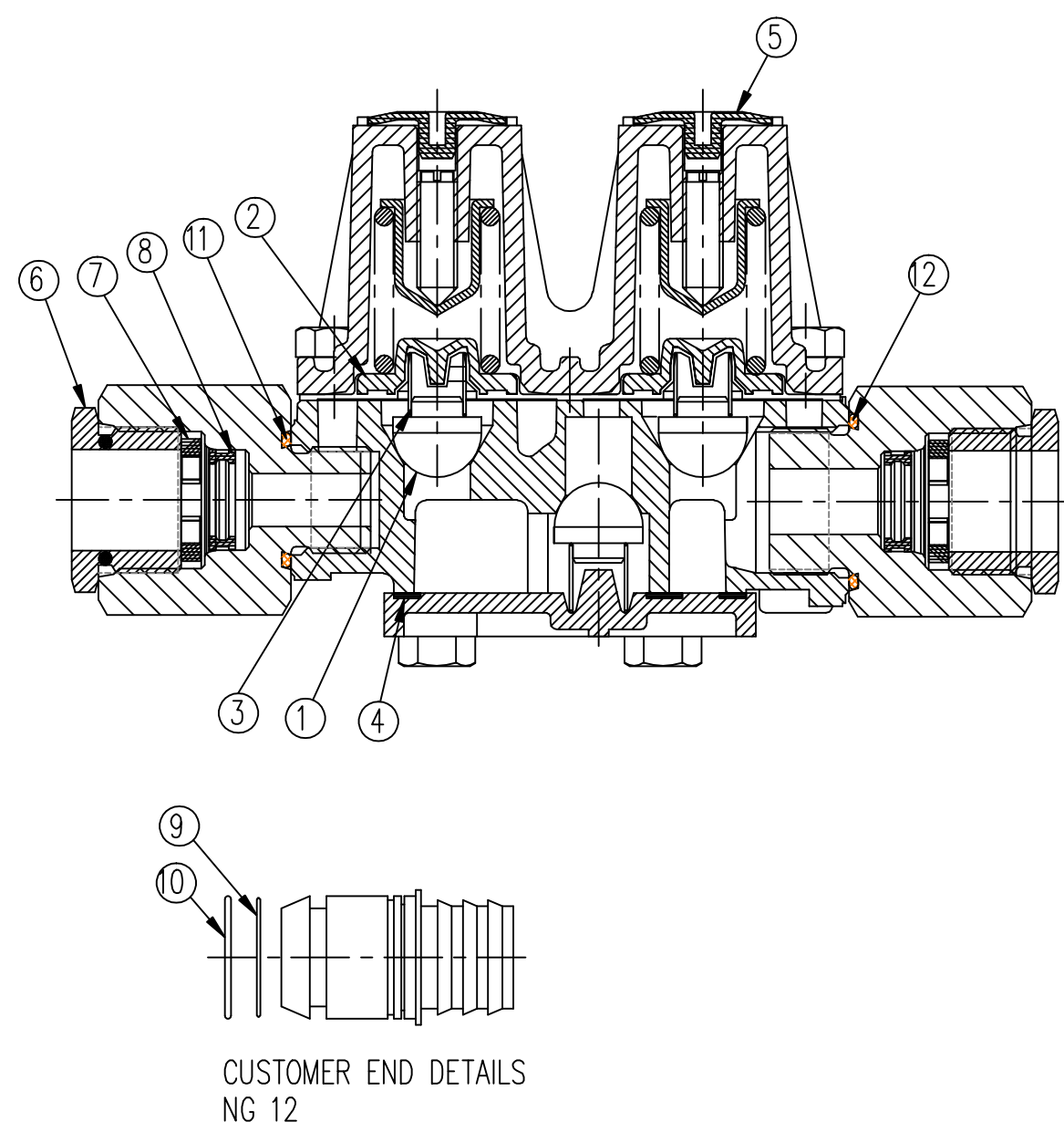


PART No.				GA
M 305860				
ENGINEERING CHANGES				
ECN No.	DATE	REV	SIGN	
10052	30.03.06	NEW	IAS	
10138	29.04.06	1	RBS	
ECN 10052 Withdrawn.				
10885	27.08.07	2	SL	
ECN 10138 reissued with following changes. 2 Tapped holes M8x1.25 thro' with related dimensions added. DIM 71, 148, 181 and 90.5 were 72, 146, 197 and 89.6 respectively. 4 Delivery voss connection, M22x1.5 (NG 12) was M16x1.5 (NG 8). Drawing redrawn.				
11374	09.02.09	3	RBS	
In Name plate, Company name changed from Sundaram clayton Ltd to WABCO-TVS (INDIA) Ltd. Drawing redrawn.				
12083	16.03.11	4	RBS	
Drawing template WABCO was WABCO-TVS (India) Ltd. Drawing pictorially modified inline with parts. Drawing redrawn.				



DETAILS OF ADAPTOR MACHINING FOR M22x1.5

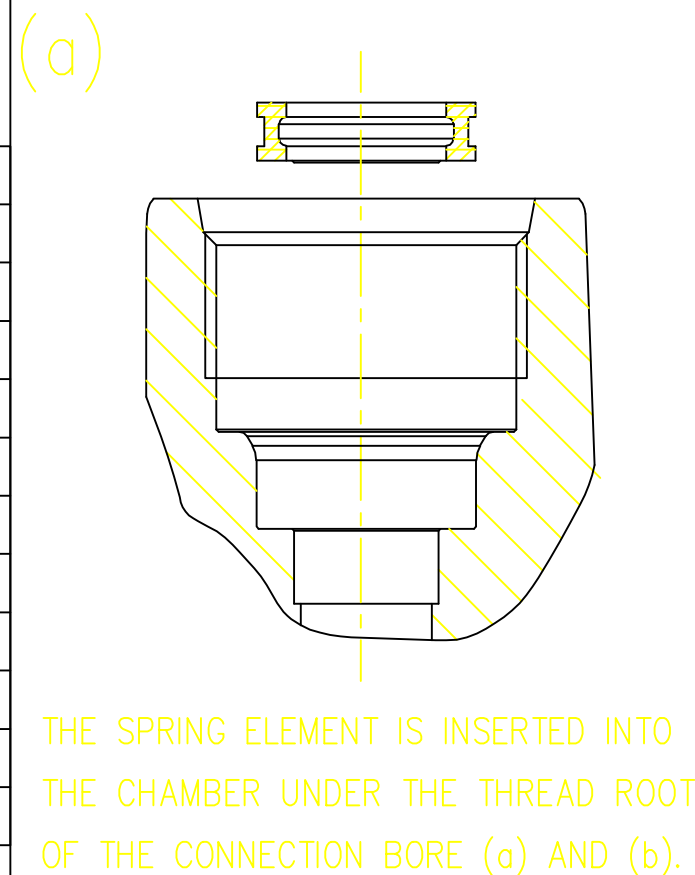
T.M. PART No.	ELEMENT No. (PORT No.) ASSEMBLY No.	DYNAMIC OPENING PRESSURE (bar)				RETAINED PRESSURE (bar)			
		1 (21)	2 (22)	3 (23)	4 (24)	1 (21)	2 (22)	3 (23)	4 (24)
M 305860		7.35±0.15	7.35±0.15	7.05±0.15	7.05±0.15	0	≥ 6.8	≥ 6.6	≥ 6.6
		≥ 6.8	0	≥ 6.6	≥ 6.6	≥ 6.8	≥ 6.8	≥ 6.6	≥ 6.6
		≥ 4.7	≥ 4.7	0	≥ 6.6	≥ 4.7	≥ 4.7	0	≥ 6.6
		≥ 4.7	≥ 4.7	≥ 6.6	0	≥ 4.7	≥ 4.7	≥ 6.6	0



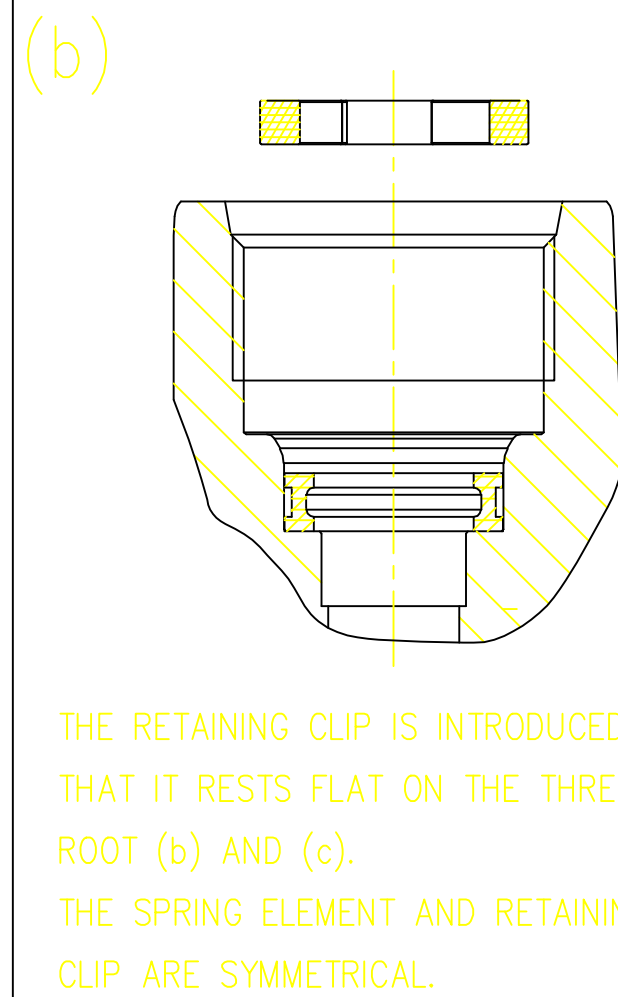
MSP REPAIR KIT NUMBER 3/95

Item No.	MFTPL Part No.	Part No.	Description	Qty
1		M311280	VALVE	6
2		M311290	DIAPHRAGM ASSY	1
3		M336900	COMPRESSION SPRING	6
4		M336970	GASKET	1
5		M336990	DUST COVER	4
6		M932700	SEALING RING NG 12	4
7		M932730	RETAINING CLIP NG 12	4
8		M932720	SPRING ELEMENT NG 12	4
9		M935980	SEALING RING NG 12	1
10		M935990	SEALING RING NG 12	1
11		M910180	O-RING	1
12		M917500	O-RING	1
13		M919710	GREASE SACHET	1

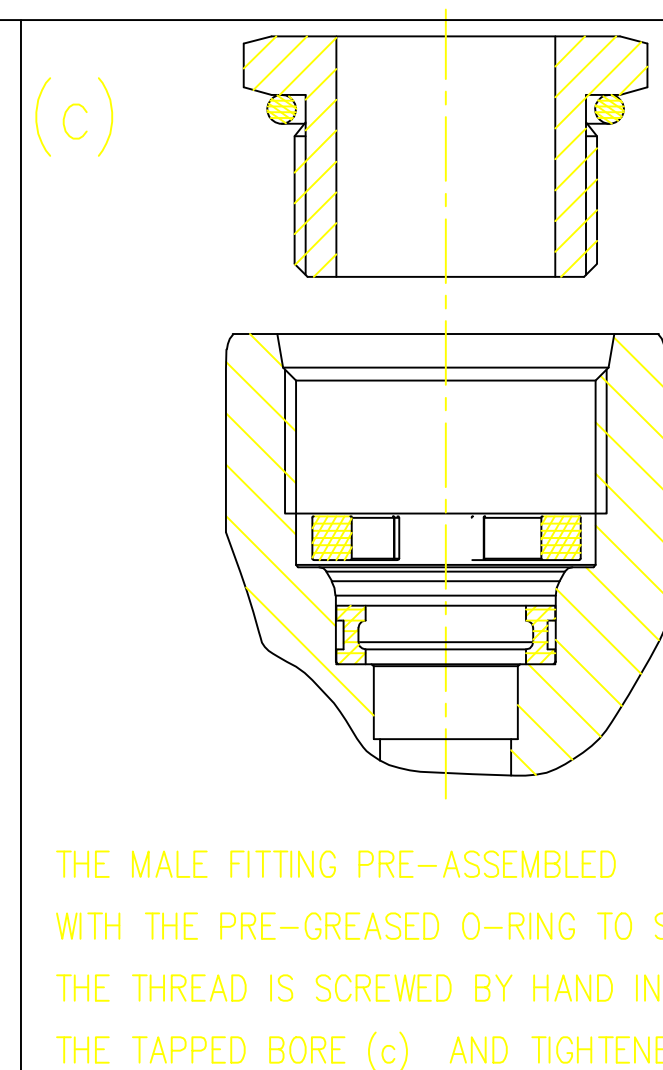
### ASSEMBLY PROCEDURE:



THE SPRING ELEMENT IS INSERTED INTO THE CHAMBER UNDER THE THREAD ROOT OF THE CONNECTION BORE (a) AND (b).



THE RETAINING CLIP IS INTRODUCED SO THAT IT RESTS FLAT ON THE THREAD ROOT (b) AND (c). THE SPRING ELEMENT AND RETAINING CLIP ARE SYMMETRICAL.



THE MALE FITTING PRE-ASSEMBLED WITH THE PRE-GREASED O-RING TO SEAL THE THREAD IS SCREWED BY HAND INTO THE TAPPED BORE (c) AND TIGHTENED.

ELEMENTS ARE SET WITH AIR FLOW RATE OF 90 NORMAL l/min (SC 6 COMPRESSOR WITH 1448 cm DISPLACEMENT AT 1000 r/min.

PRODUCT SPECIFICATION No PSSC 192C (REV No. 1, DATED 06.08.04)

WEIGHT: 1.2 kg APPROX

THERMAL RANGE OF OPERATION: -40°C TO +80°C

EQUIVALANT FLOW DIAMETER: 7 mm

OPEN PORTS ARE FITTED WITH CLOSURE PLUGS FOR STORAGE AND TRANSIT PURPOSES

QUALITY COMPLIANCE TESTS WILL BE CARRIED OUT REGULARLY AS PER CLAUSE NO: 13 OF PSSC 192C

**WABCO**

AMBATTUR, CHENNAI – 600058, INDIA

QUADRUPLE SYSTEM  
PROTECTION VALVE

PART No.  
M305860

GA

XVII	STEEL	NO TREATMENT
XVI	CAST IRON	PLATED
XV	STEEL	ZINC-IRON PLATED
XIV	CAST IRON	NO TREATMENT
XIII	ZINC ALLOY	ANODISED
XII	PLASTIC	NO TREATMENT
XI	RUBBER	NO TREATMENT
X	STAINLESS STEEL	NO TREATMENT
IX	BRASS	NO TREATMENT
VIII	ZINC ALLOY	CHROMATED
VII	ALUMINIUM ALLOY	ANODISED
VI	ALUMINIUM ALLOY	CHROMATED
V	CAST IRON	PAINTED
IV	STEEL	POWDER COATED
III	STEEL	PAINTED
II	STEEL	PHOSPHATED
I	STEEL	ZINC PLATED
PART CODE	MATERIAL	SURFACE PROTECTION

	SIGN	DATE	MATERIAL	---
DRN	BSN	13.03.11	ALTERNATE MATERIAL	---
CHD	RBS	13.03.11	SURFACE PROTECTION	REFER TABLE
APD	SN	13.03.11	RAW PART No.	---

### CONFIDENTIAL DRAWING

THIS DRAWING IS THE SOLE PROPERTY OF WABCO. IT SHOULD NOT BE COPIED OR COMMUNICATED TO ANY PERSON WITHOUT THE WRITTEN APPROVAL OF WABCO. © 2006

UNLESS OTHERWISE SPECIFIED ALL DIMENSIONS IN mm

REMOVE BURRS AND SHARP EDGES FROM FINISHED PARTS  
ALL DIMENSIONS ARE AFTER SURFACE PROTECTION / TREATMENT  
MALE THREAD TO IS 14962 (Part 3) 6h : 2001  
FEMALE THREAD TO IS 14962 (Part 3) 6H : 2001

### GENERAL TOLERANCES

RANGE OF NOMINAL DIMENSIONS (± mm)				FORCE, POWER, PRESSURE etc., (± %)
≤ 50	> 50 ≤ 180	> 180 ≤ 400	> 400	
1	2	3	4	3

SCALE

1 : 1

