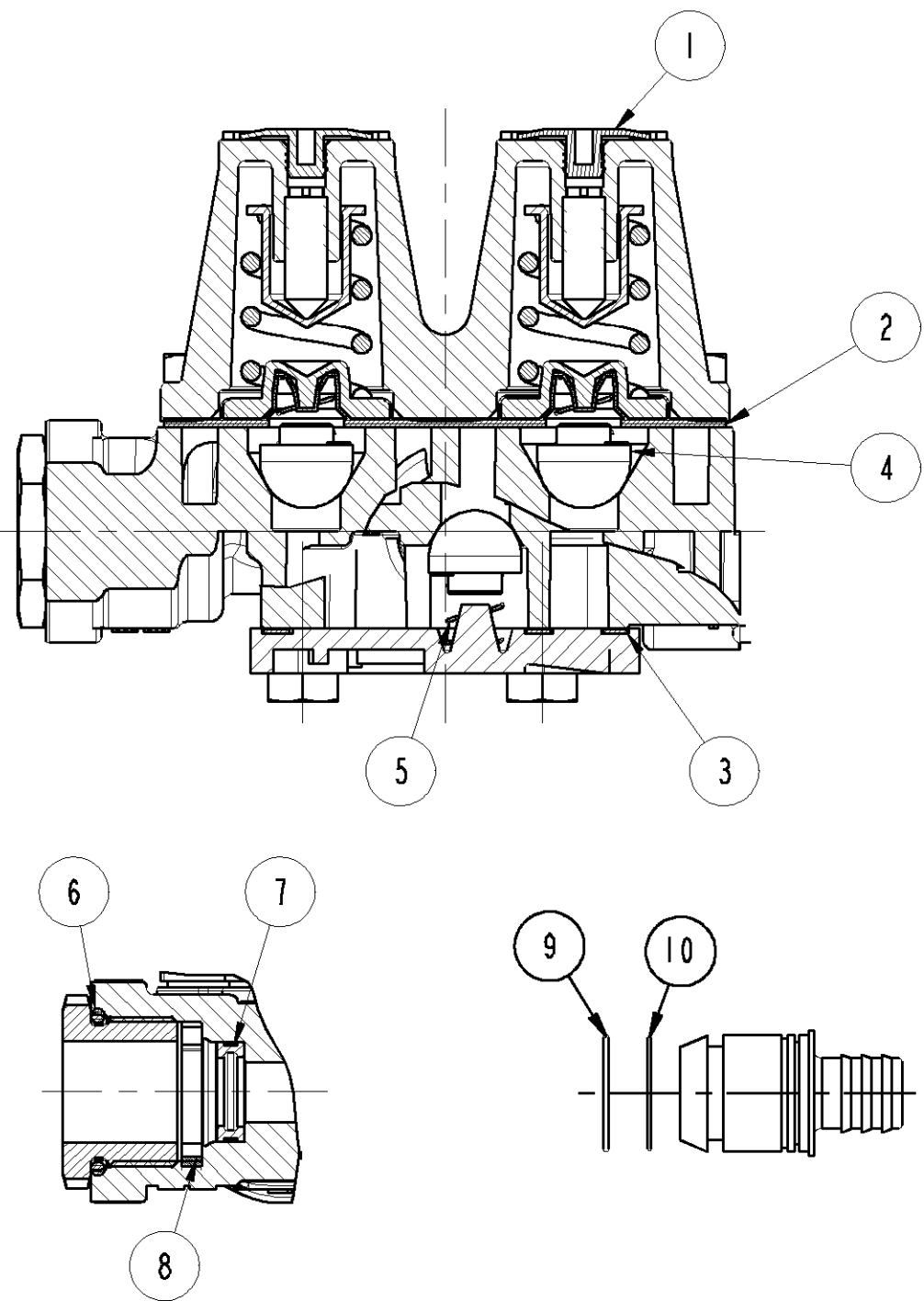
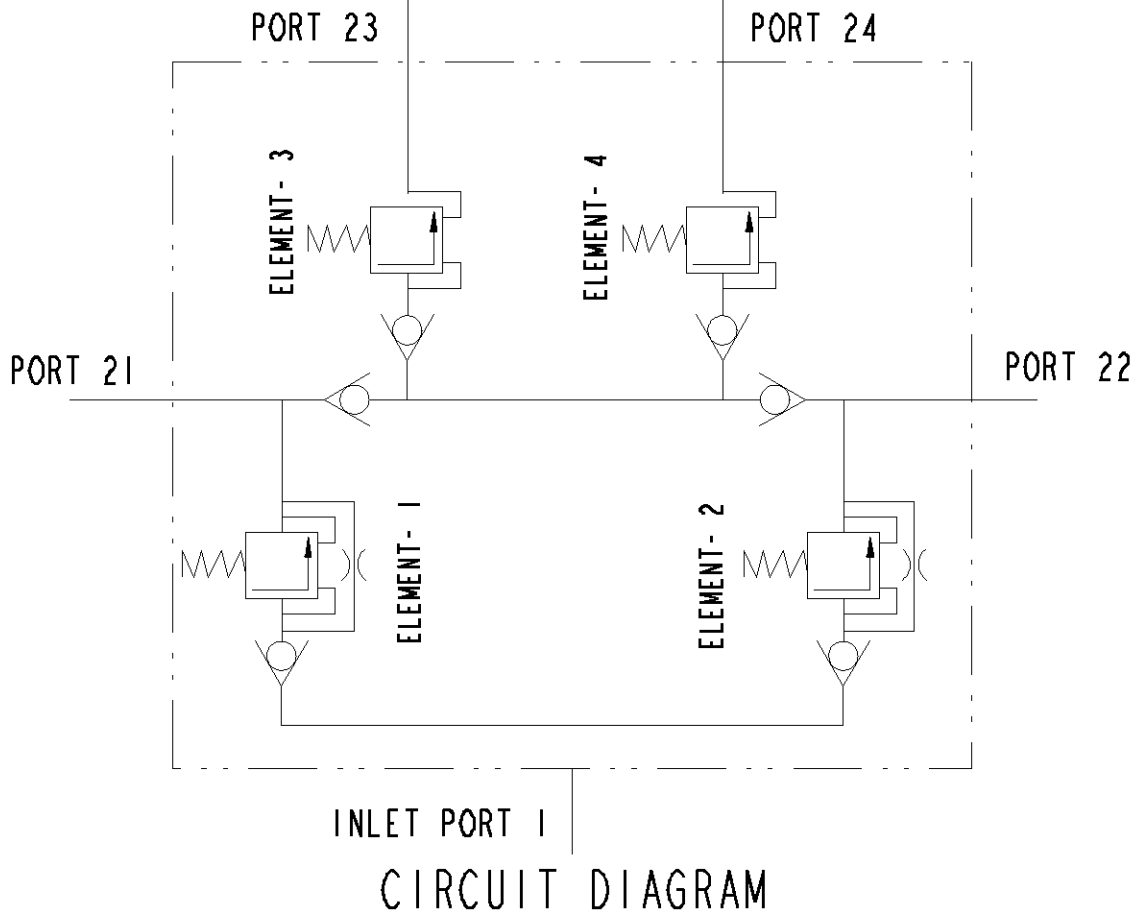


PART No.	M306750	GA	
ENGINEERING CHANGES			
ECN No.	DATE	REV	SIGN
10886	27.08.07	NEW	SL
11374	09.02.09	1	RBS
In name plate, company name changed from Sundaram Clayton Ltd to WABCO-TVS (INDIA) Ltd. Drawing redrawn.			
11457	06.05.09	2	PSK
Customer part No. added. Note No.1,2, 1,3 and 3 added. Dim 28.2 and 56.4 added. Drawing redrawn.			
11499	10.06.09	3	PSK
Drawing pictorially modified inline with valve body. Drawing redrawn.			
12577	02.07.13	4	RAR
Drawing pictorially modified inline with Base Cover. Drawing redrawn.			



MSP 3/65 REPAIR KIT CONSISTS OF ITEM SHOWN				
SL No.	MFTPL PART No.	WABCO PART No.	DESCRIPTION	QTY
1		M336990	DUST COVER	4
2		M311290	DIAPHRAGM ASSEMBLY	1
3		M336970	GASKET	1
4		M311280	VALVE	6
5		M336900	SPRING	6
6		M932700	SEALING RING NG-12	5
7		M932720	SPRING ELEMENT NG-12	5
8		M932730	RETANING CLIP NG-12	5
9		M935980	SEALING RING NG-12	5
10		M935990	SEALING RING NG-12	5
		M919710	GREASE SACHET	1

- CRITICAL
- MAJOR
- NO SYMBOL - MINOR

XVII	STEEL	NO TREATMENT
XVI	CAST IRON	PLATED
XV	STEEL	ZINC IRON PLATED
XIV	CAST IRON	NO TREATMENT
XIII	ZINC ALLOY	ANODISED
XII	PLASTIC	NO TREATMENT
XI	RUBBER	NO TREATMENT
X	STAINLESS STEEL	NO TREATMENT
IX	BRASS	NO TREATMENT
VIII	ZINC ALLOY	CHROMATED
VII	ALUMINIUM ALLOY	ANODISED
VI	ALUMINIUM ALLOY	CHROMATED
V	CAST IRON	PAINTED
IV	STEEL	POWDER COATED
III	STEEL	PAINTED
II	STEEL	PHOSPHATED
I	STEEL	ZINC PLATED
PART MATERIAL CODE	SURFACE PROTECTION	

DYNAMIC OPENING PRESSURE (bar)				RETAINED PRESSURE (bar)			
PORT 21	PORT 22	PORT 23	PORT 24	PORT 21	PORT 22	PORT 23	PORT 24
7.35±0.15	7.35±0.15	7.05±0.15	7.05±0.15	0	≥ 6.8	≥ 6.6	≥ 6.6
				≥ 6.8	0	≥ 6.6	≥ 6.6
				≥ 4.7	≥ 4.7	0	≥ 6.6
				≥ 4.7	≥ 4.7	≥ 6.6	0

	SIGN	DATE	MATERIAL	----
DRN	RAR	02.07.13	ALTERNATE MATERIAL	----
CHD	SSH	02.07.13	SURFACE PROTECTION	REFER TABLE
APD	KPN	02.07.13	RAW PART No.	----

CONFIDENTIAL DRAWING

THIS DRAWING IS THE SOLE PROPERTY OF WABCO. IT SHOULD NOT BE COPIED OR COMMUNICATED TO ANY PERSON WITHOUT THE WRITTEN APPROVAL OF WABCO.

© 2007

UNLESS OTHERWISE SPECIFIED ALL DIMENSIONS IN mm.

REMOVE BURRS AND SHARP EDGES FROM FINISHED PARTS. ALL DIMENSIONS ARE AFTER SURFACE PROTECTION/ TREATMENT

MALE THREAD TO IS 14962 (PART3) 6h : 2001
FEMALE THREAD TO IS 14962 (PART3) 6H : 2001

GENERAL TOLERANCES					
RANGE OF NOMINAL DIMENSIONS (± mm)				FORCE, POWER, PRESSURE etc.,	
≤ 50	≤ 50	≤ 180	≤ 400	(± °)	(± %)
1	2	3	4	3	10

SCALE 1:1

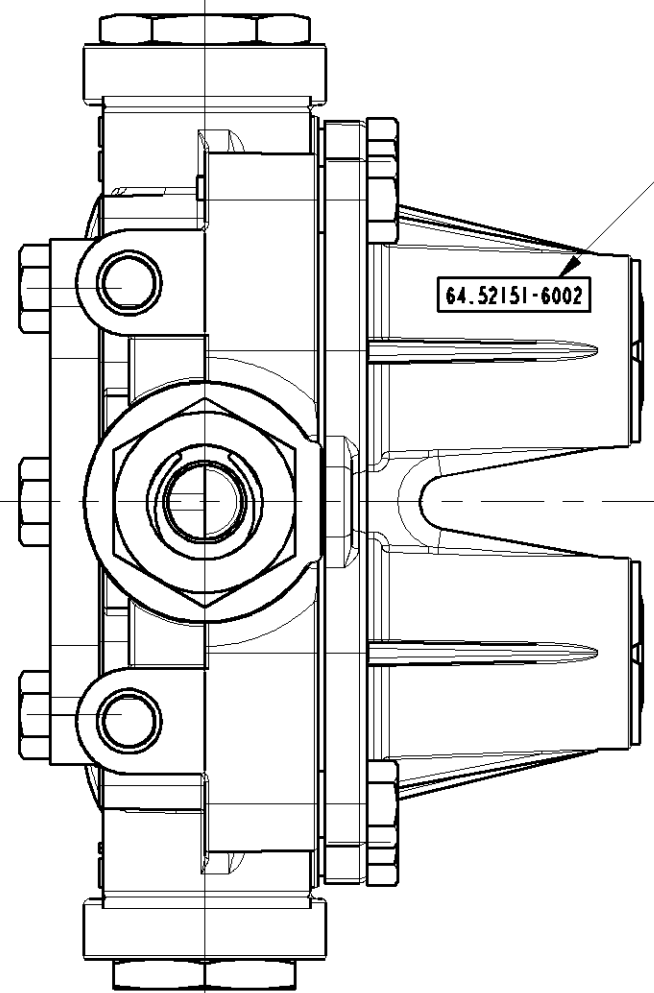
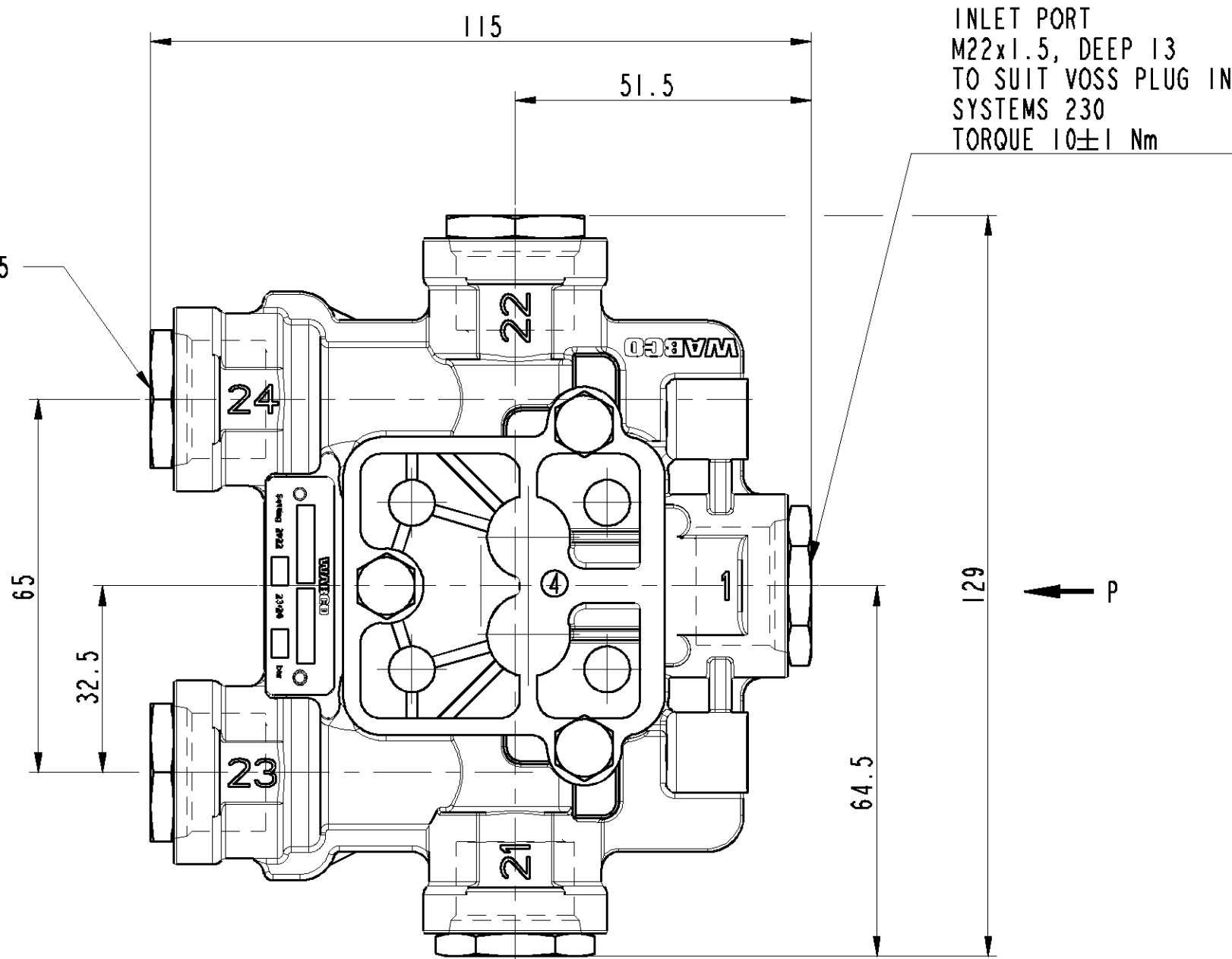
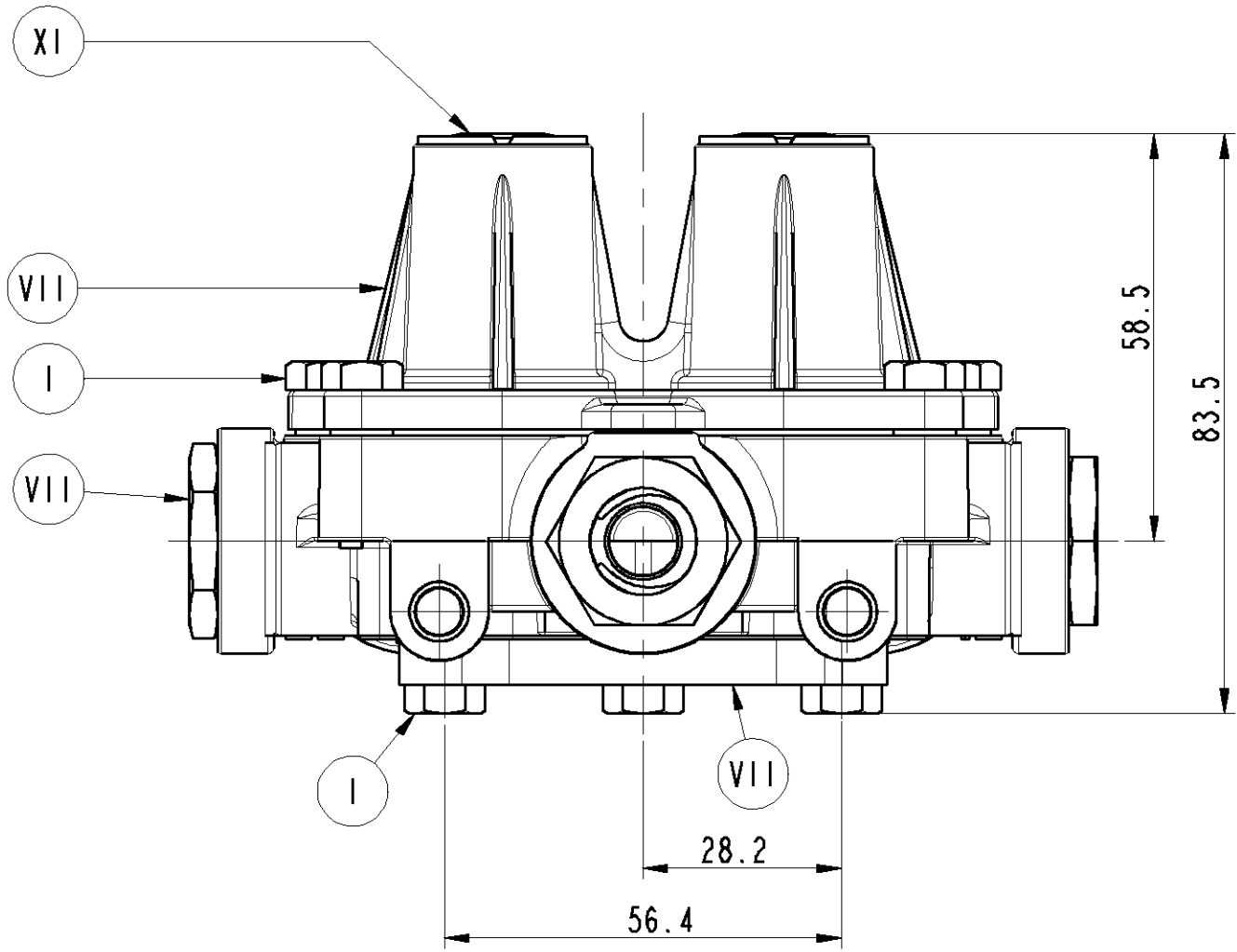
WABCO
AMBATTUR, CHENNAI - 600058, INDIA

QUADRUPLE SYSTEM
PROTECTION VALVE

PART No.
M306750.

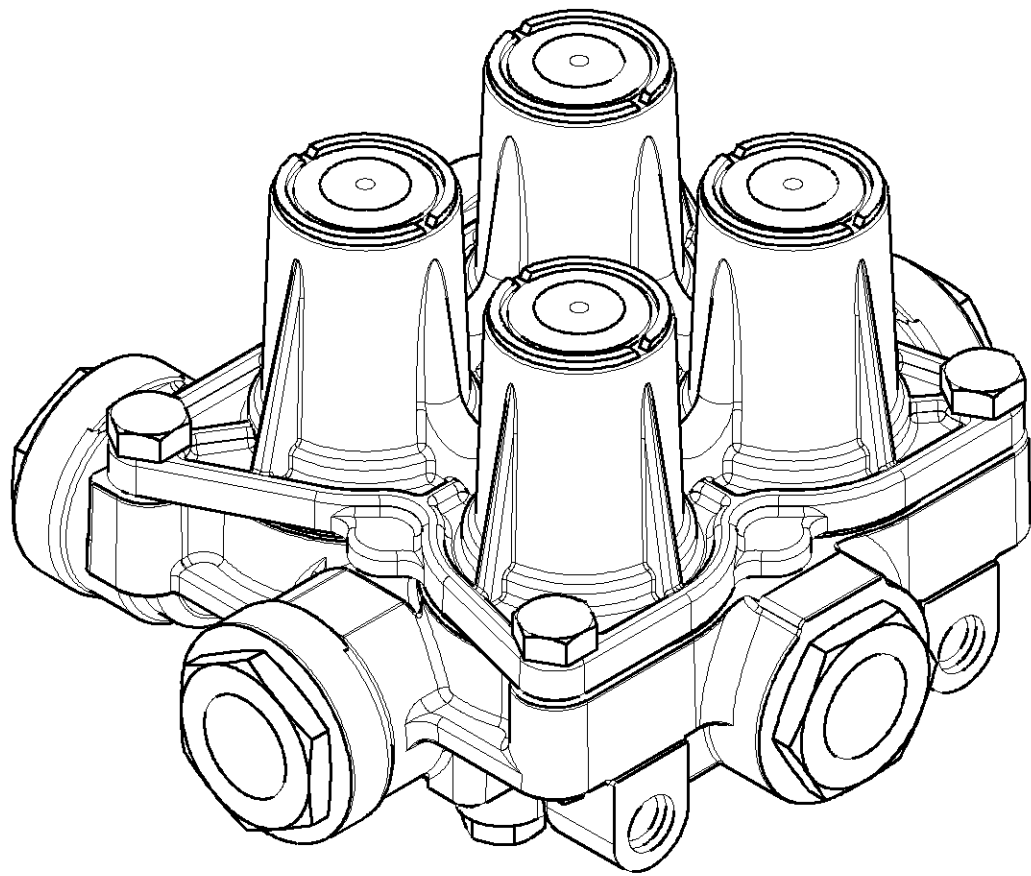
GA

DO NOT SCALE IF IN DOUBT ASK

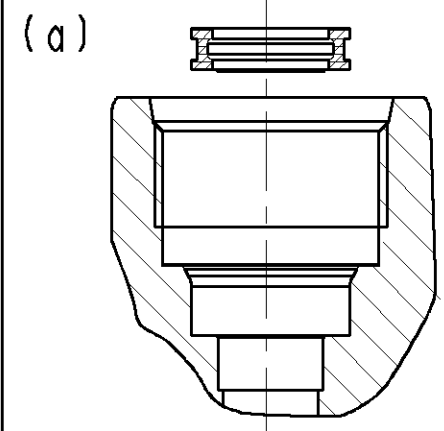


VIEW P

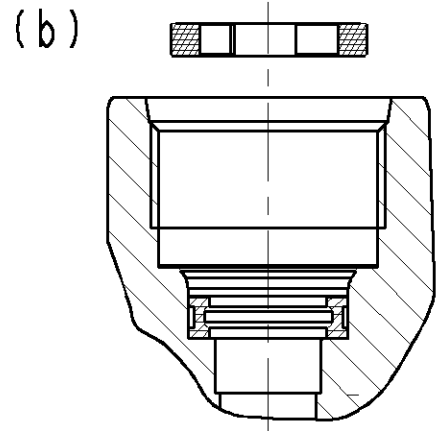
CUSTOMER PART No. IS SHOWN HERE



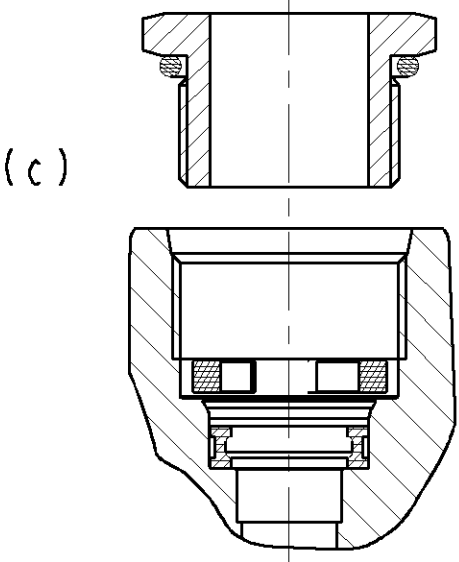
ASSEMBLY PROCEDURE



THE SPRING ELEMENT IS INSERTED INTO THE CHAMBER UNDER THE THREAD ROOT OF THE CONNECTION BORE (a) AND (b).

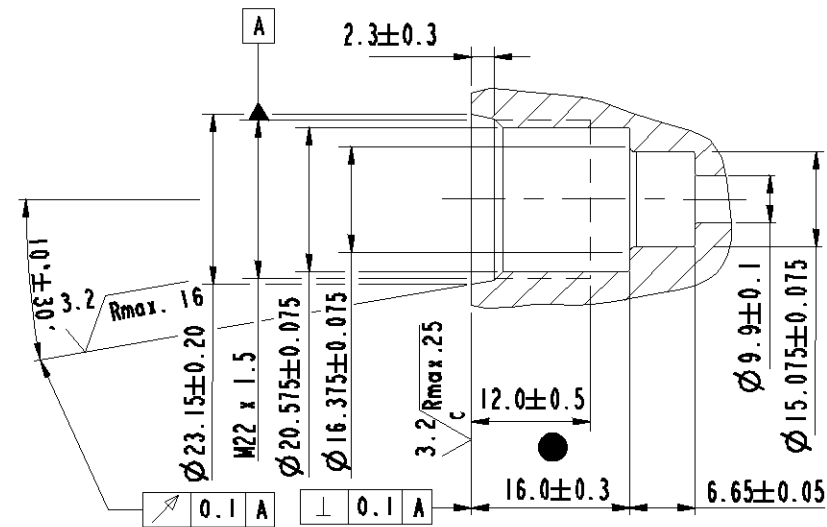


THE RETAINING CLIP IS INTRODUCED SO THAT IT RESTS FLAT ON THE THREAD ROOT (b) AND (c). THE SPRING ELEMENT AND RETAINING CLIP ARE SYMMETRICAL.



THE MALE FITTING PRE-ASSEMBLED WITH THE PRE-GREASED O-RING TO SEAL THE THREAD IS SCREWED BY HAND INTO THE TAPPED BORE (c) AND TIGHTENED.

- NG12 SPRING ELEMENT
VOSS PART No. 00 62 05 99 00
- NG12 RETAINING CLIP
VOSS PART No. 00 62 01 90 00
- NG12 MALE NUT M22 X 1.5 WITH O-RING
VOSS PART No. 00 62 03 99 00



DETAILS OF PORT MACHINING FOR M22x1.5

SL No.	NOTES	
1	PRODUCT SPECIFICATION AND RELIABILITY	
1.1	PRODUCT SPECIFICATION No. REV No. 1, DATED 31.08.05	PSSC 192C
1.2	NORMAL WORKING PRESSURE	8 bar
1.3	MAXIMUM WORKING PRESSURE	10 bar
1.4	THERMAL RANGE OF OPERATION	-40°c TO +80°c
1.5	EQUIVALANT FLOW DIAMETER	7 mm
2	WEIGHT	1.06 kg
3	OPENING PRESURE	REFER TABLE
4	ELEMENTS ARE SET WITH AIR FLOW RATE OF 90 NORMAL l/min SC 6 COMPRESSOR WITH 144 cm ³ DISPLACEMENT AT 1000 r/min	
5	QUALITY COMPLIANCE TESTS WILL BE CARRIED OUT REGULARLY AS PER CLAUSE No. 13 OF PSSC 192C	
6	OPEN PORTS ARE FITTED WITH CLOUSER PLUGS FOR STORAGE AND TRANSIT PURPOSE	