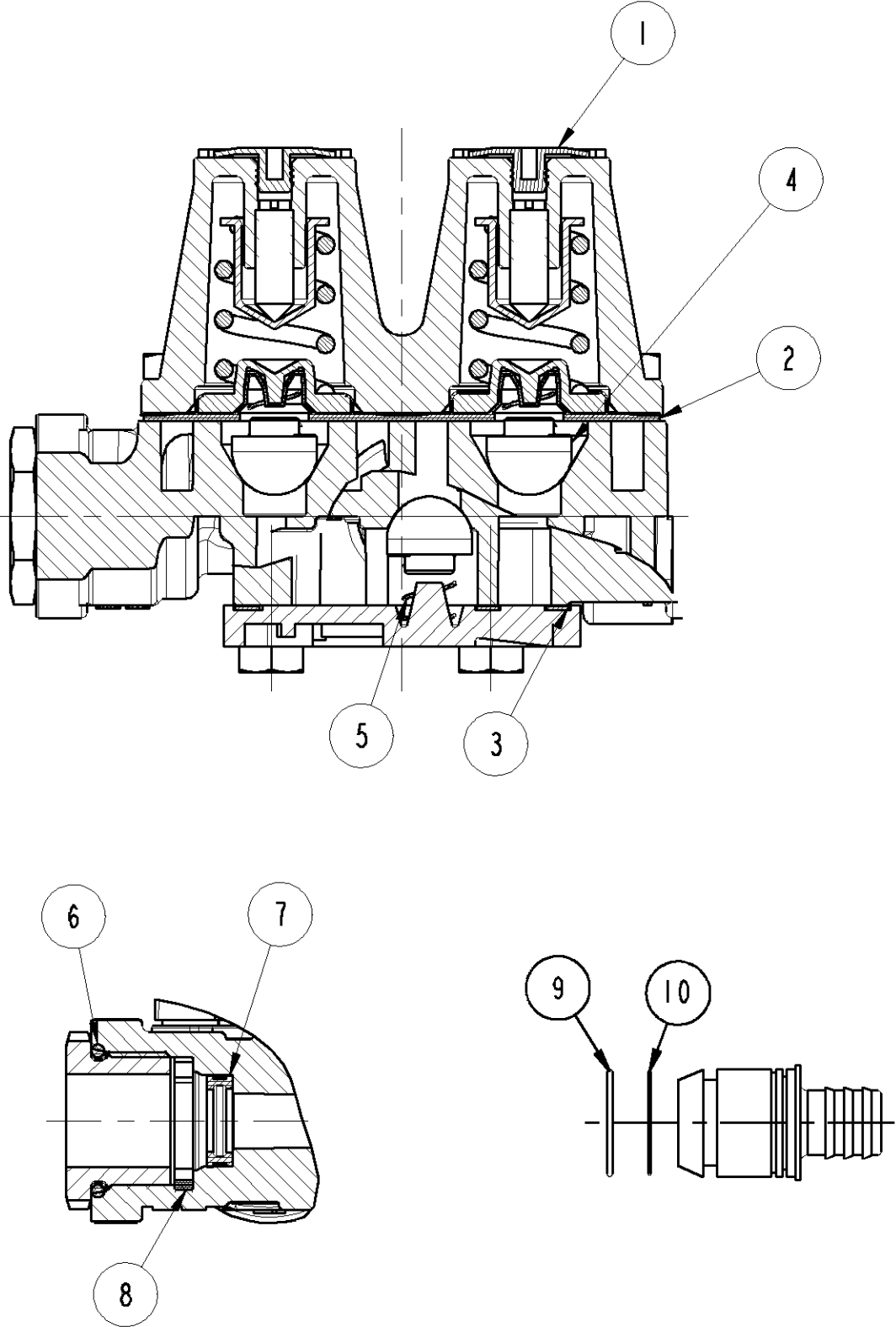
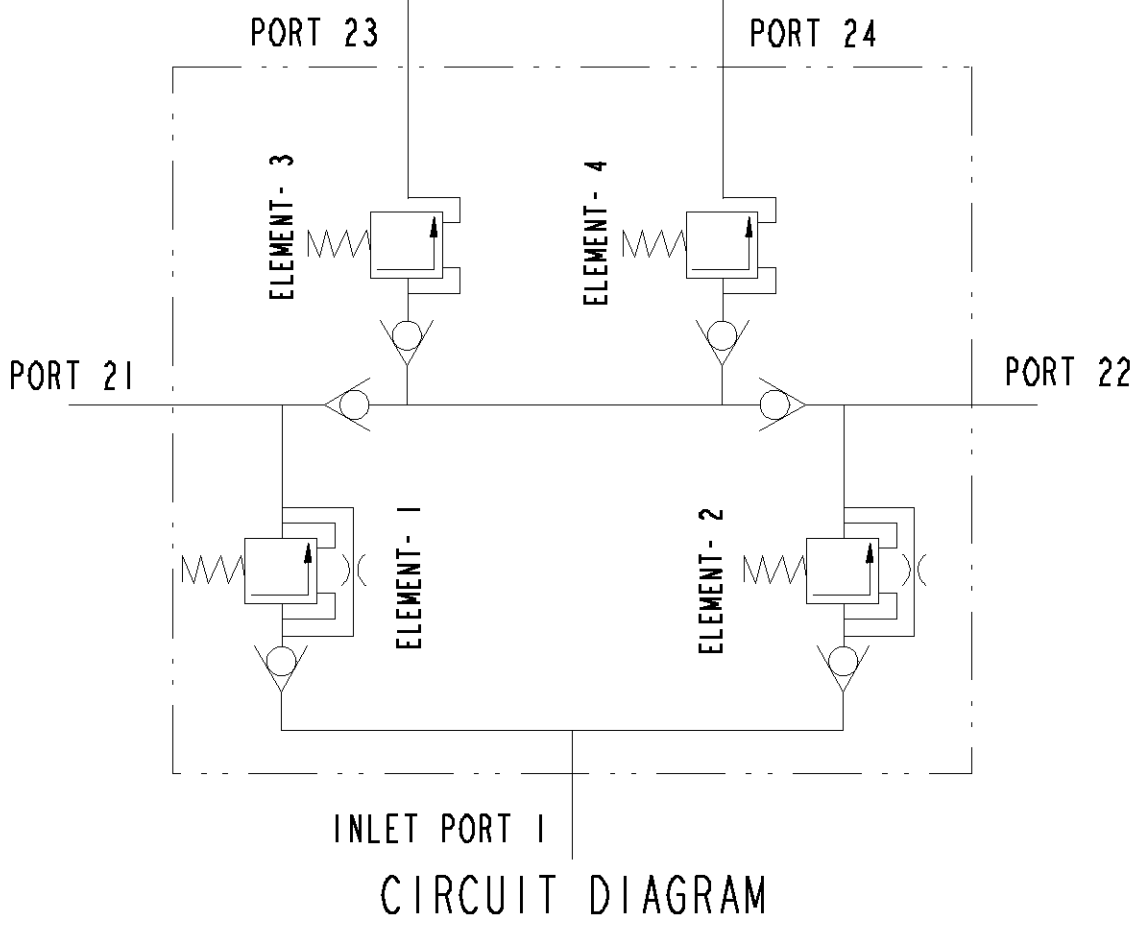


PART No.

M307550

GA

ENGINEERING CHANGES				
ECN No.	DATE	REV	SIGN	
11413	18.03.09	NEW	PSK	
11420	31.03.09	1	PSK	
In delivery port 21, VOSS connection deleted and conventional adaptor connection added. Dim 173 and 108.5 were 129 and 64.5 respectively. Dim 38, A/F 27 and Ø9 added. Note No.6 added. Drawing redrawn.				
11424	04.04.09	2	PSK	
PSSC 192C with revision No. and date deleted and PSSC 301C with revision No. and date added. Drawing redrawn.				
11499	10.06.09	3	PSK	
Drawing pictorially modified inline with valve body. Torque 52.5±2.5 Nm was 10±1 Nm. Drawing redrawn.				
11516	23.06.09	4	RBS	
Customer Part No. added. Drawing redrawn.				
12083	16.03.11	5	RBS	
Drawing template WABCO was WABCO WABCO-TVS (INDIA) LIMITED. Drawing pictorially modified inline with parts .Drawing redrawn.				
12206	11.11.11	6	RAR	
In notes point no.10 added. Drawing redrawn.				
12577	02.07.13	7	RAR	
Drawing pictorially modified inline with Base Cover. Drawing redrawn.				



MSP 3/115 REPAIR KIT CONSISTS OF ITEM SHOWN

SL No.	TML PART No.	WABCO PART No.	DESCRIPTION	QTY
1		M336990	DUST COVER	4
2		M311290	DIAPHRAGM ASSEMBLY	1
3		M336970	GASKET	1
4		M311280	VALVE	6
5		M336900	SPRING	6
6		M932700	SEALING RING NG-12	5
7		M932720	SPRING ELEMENT NG-12	4
8		M932730	RETANING CLIP NG-12	4
9		M935980	SEALING RING NG-12	4
10		M935990	SEALING RING NG-12	4
11		M919710	GREASE SACHET	1

XVII	STEEL	NO TREATMENT
XVI	CAST IRON	PLATED
XV	STEEL	ZINC IRON PLATED
XIV	CAST IRON	NO TREATMENT
XIII	ZINC ALLOY	ANODISED
XII	PLASTIC	NO TREATMENT
XI	RUBBER	NO TREATMENT
X	STAINLESS STEEL	NO TREATMENT
IX	BRASS	NO TREATMENT
VIII	ZINC ALLOY	CHROMATED
VII	ALUMINIUM ALLOY	ANODISED
VI	ALUMINIUM ALLOY	CHROMATED
V	CAST IRON	PAINTED
IV	STEEL	POWDER COATED
III	STEEL	PAINTED
II	STEEL	PHOSPHATED
I	STEEL	ZINC PLATED
PART MATERIAL CODE		SURFACE PROTECTION

DYNAMIC OPENING PRESSURE (bar)				ELEMENTS				RETAINED PRESSURE (bar)			
PORT 21	PORT 22	PORT 23	PORT 24	PORT 21	PORT 22	PORT 23	PORT 24	PORT 21	PORT 22	PORT 23	PORT 24
7.35±0.15	7.35±0.15	7.05±0.15	7.05±0.15	0	≥ 6.8	≥ 6.6	≥ 6.6	0	≥ 6.8	≥ 6.6	≥ 6.6
				≥ 6.8	0	≥ 6.6	≥ 6.6	≥ 4.7	≥ 4.7	0	≥ 6.6
				≥ 4.7	≥ 4.7	≥ 6.6	0	≥ 4.7	≥ 4.7	≥ 6.6	0

	SIGN	DATE	MATERIAL	----
DRN	RAR	02.07.13	ALTERNATE MATERIAL	----
CHD	SSH	02.07.13	SURFACE PROTECTION	REFER TABLE
APD	KPN	02.07.13	RAW PART No.	----

CONFIDENTIAL DRAWING

THIS DRAWING IS THE SOLE PROPERTY OF WABCO. IT SHOULD NOT BE COPIED OR COMMUNICATED TO ANY PERSON WITHOUT THE WRITTEN APPROVAL OF WABCO.

© 2009

UNLESS OTHERWISE SPECIFIED ALL DIMENSIONS IN mm.

REMOVE BURRS AND SHARP EDGES FROM FINISHED PARTS. ALL DIMENSIONS ARE AFTER SURFACE PROTECTION/ TREATMENT

MALE THREAD TO IS 14962 (PART3) 6H : 2001
FEMALE THREAD TO IS 14962 (PART3) 6H : 2001

GENERAL TOLERANCES				FORCE, POWER, PRESSURE etc.,	
RANGE OF NOMINAL DIMENSIONS (± mm)				(± °)	(± %)
≤ 50	≤ 50	≤ 180	≤ 400	3	10
1	2	3	4		

TML PART No.

WABCO

AMBATTUR, CHENNAI - 600058, INDIA

QUADRUPLE SYSTEM PROTECTION VALVE

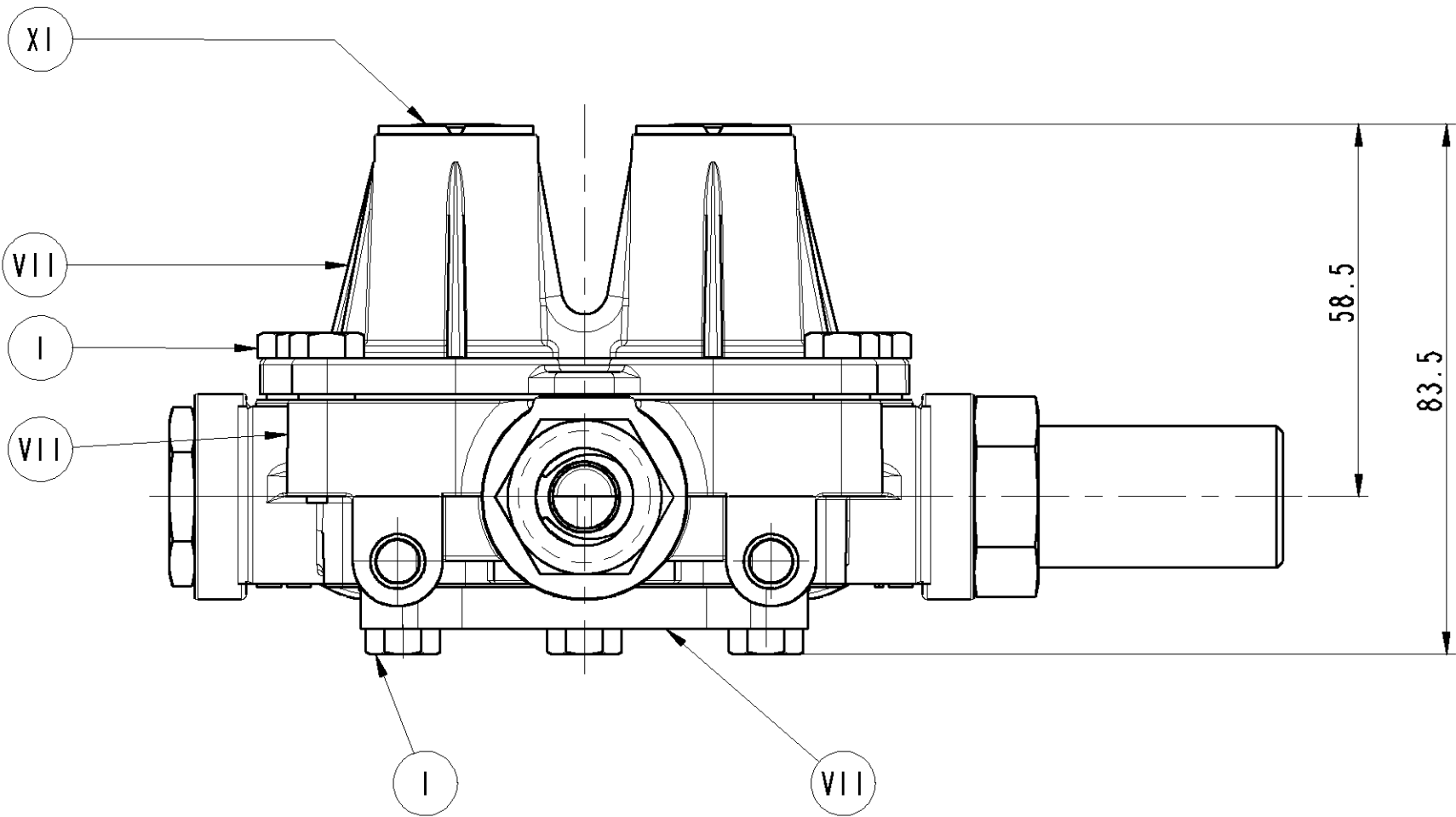
SCALE 1:1

PART No.

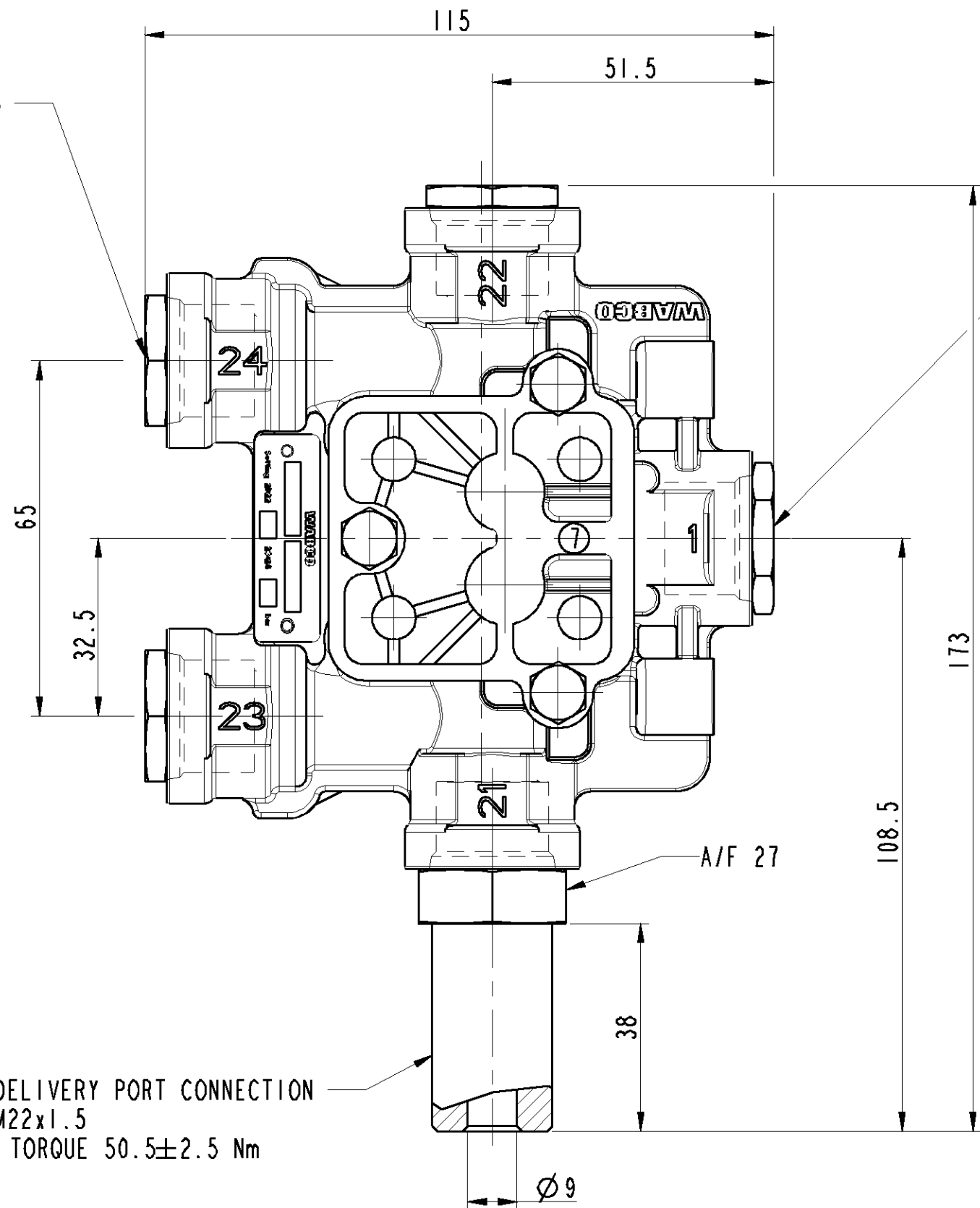
M307550

GA

DO NOT SCALE IF IN DOUBT ASK

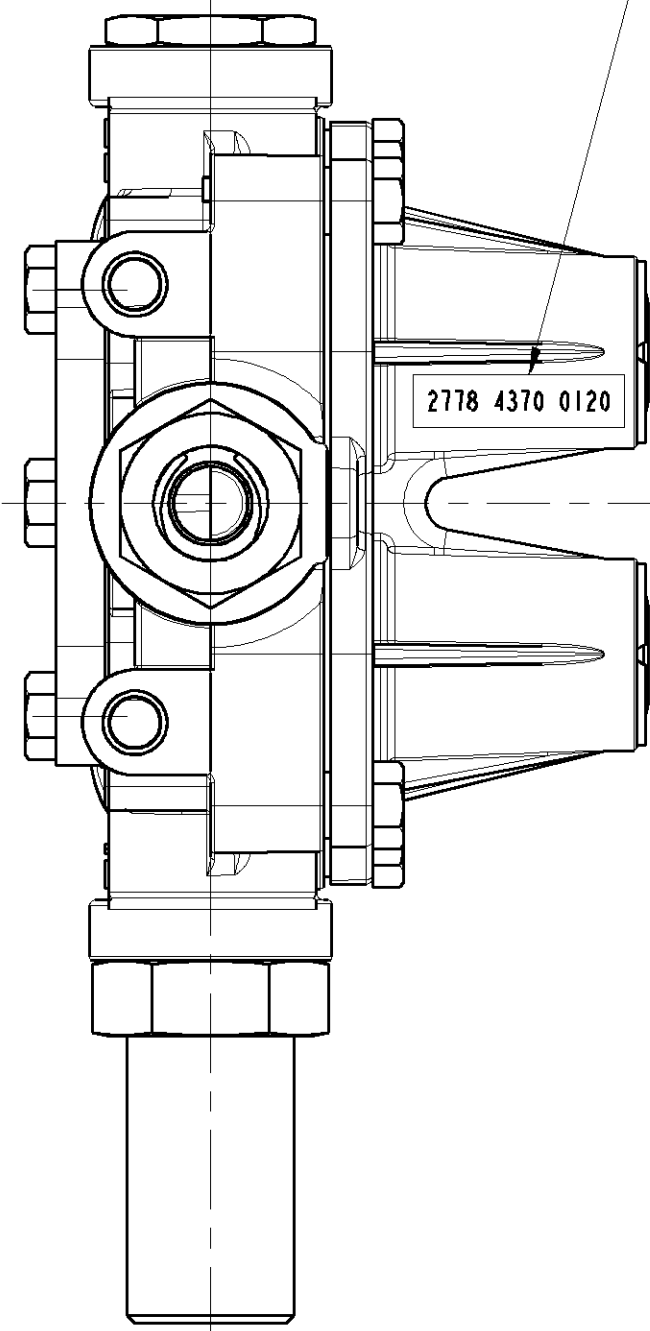


3 DELIVERY PORT M22x1.5 TO SUIT VOSS PLUG IN SYSTEMS 230 TORQUE 10±1 Nm

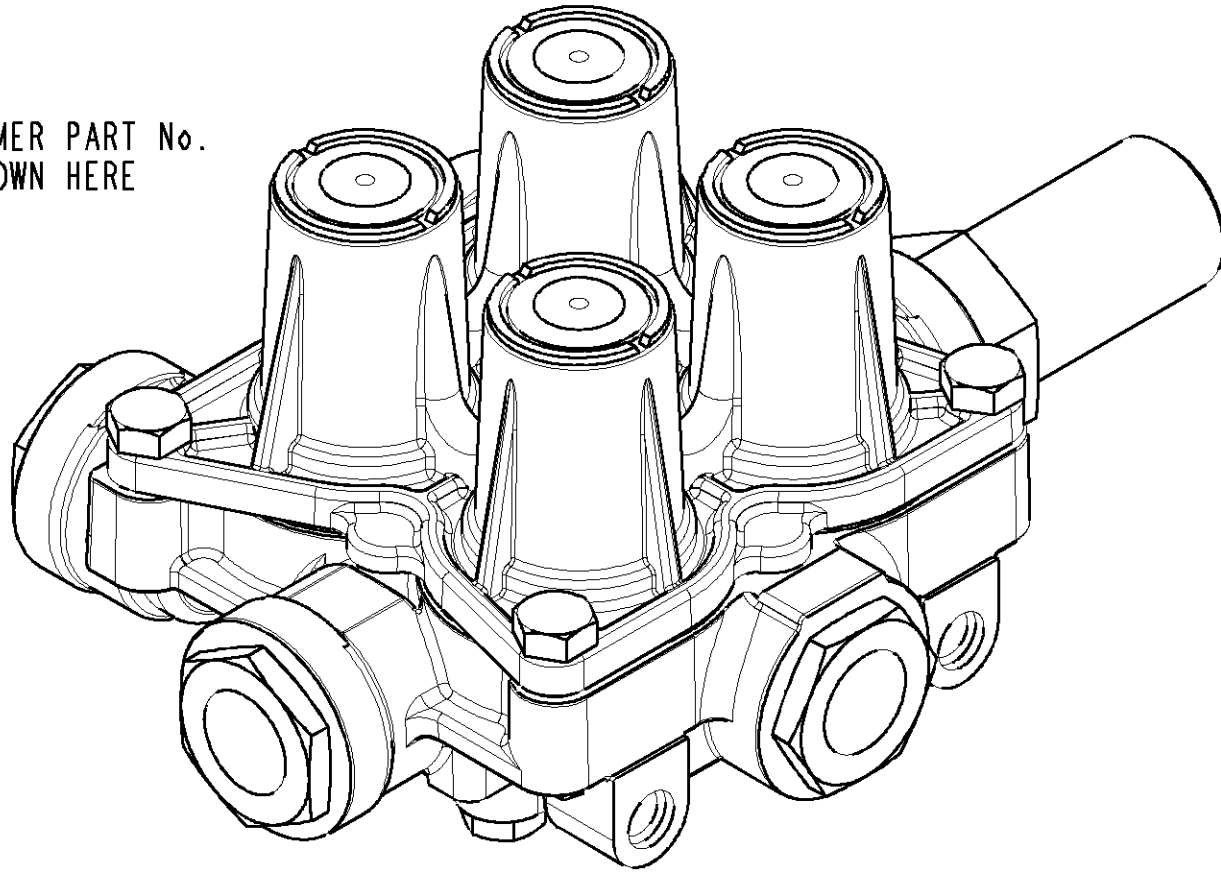


DELIVERY PORT CONNECTION M22x1.5 TORQUE 50.5±2.5 Nm

INLET PORT M22x1.5, DEEP 13 TO SUIT VOSS PLUG IN SYSTEMS 230 TORQUE 10±1 Nm



CUSTOMER PART No. IS SHOWN HERE



SL No.	NOTES	
1	ELEMENTS ARE SET WITH AIR FLOW RATE OF 100 NORMAL l/min	
2	PRODUCT SPECIFICATION No.	PSSC 301C, REV No.1, DATED 04.04.09
3	WEIGHT	1.2 kg
4	THERMAL RANGE OF OPERATION	-40°c TO +80°c
5	EQUIVALANT FLOW DIAMETER	7 mm
6	RECOMMENDED INSTALLATION POSITION	FOUR SPRING HOUSING IN QSPV IS FACING GROUND
7	QUALITY COMPLIANCE TESTS WILL BE CARRIED OUT REGULARLY AS PER CLAUSE No. 13 OF PSSC 192C	
8	SERVICE LIFE TO FIRST OVERHAUL - 3 YEARS / 3,00,000 KM WHICHEVER IS EARLIER IF FITTED AS PER RECOMMENDED LAYOUT.	
9	OPEN PORTS AND MALE THREADS ARE FITTED WITH CLOSURE PLUGS/CLOSURE SLEEVES FOR STORAGE AND TRANSIT PURPOSE	
10	PRESSURE FILLING SEQUENCE IS 21/22 → 23/24	