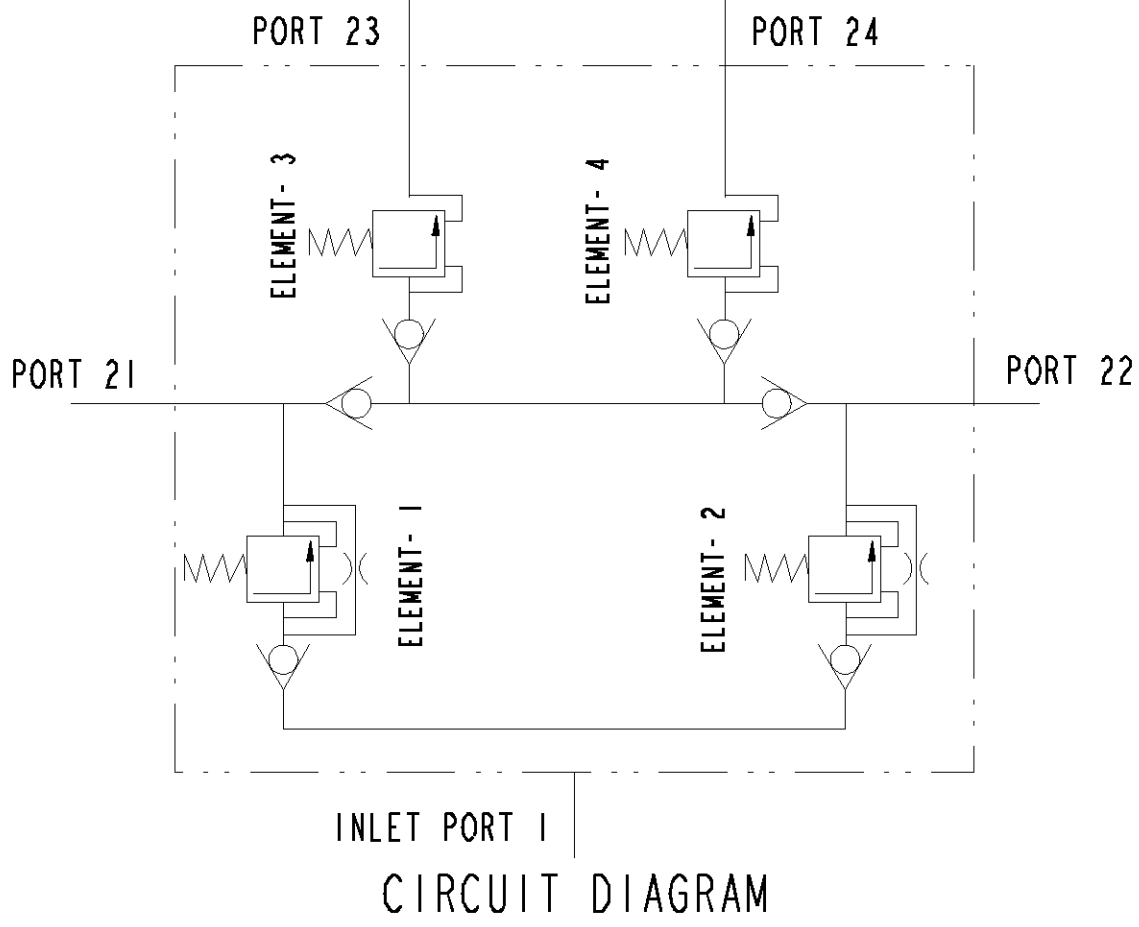
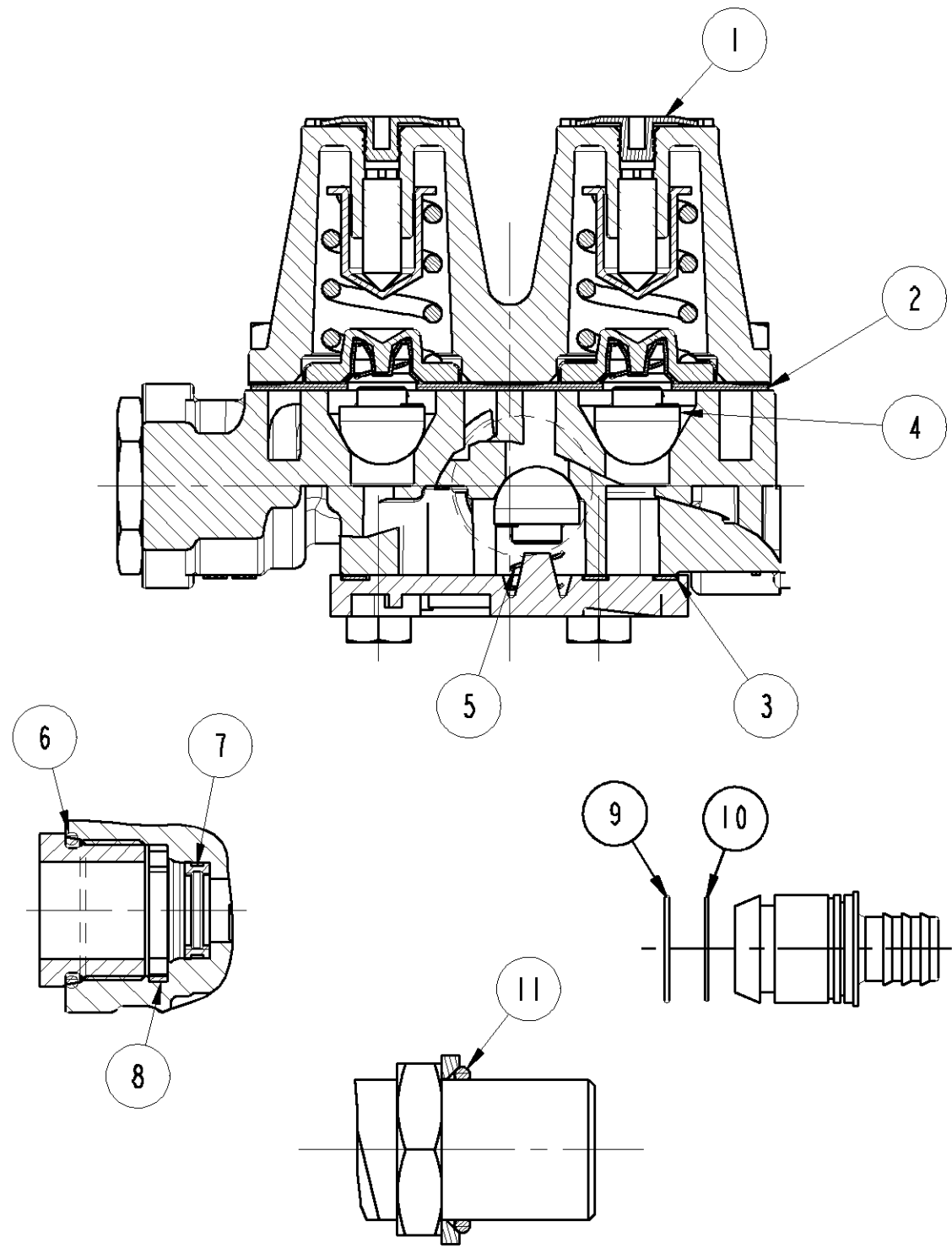


PART No.		M307670		GA	
ENGINEERING CHANGES					
ECN No.	DATE	REV	SIGN		
11463	12.05.09	New	PSK		
11499	10.06.09	1	PSK		
Drawing pictorially modified inline with valve body. Torque 52.5±2.5 Nm was 10±1 Nm. Drawing redrawn.					
11950	02.09.10	2	SSH		
Lock nut - M912740, Special washer- M915680, and Sealing ring - M915670 added. Drawing redrawn.					
11972	06.10.10	3	SSH		
Customer label added in the drawing. Drawing redrawn.					
12083	16.03.11	4	RBS		
Drawing template WABCO was WABCO-TVS (India) Ltd. Drawing pictorially modified inline with parts. Drawing redrawn.					
12305	25.04.12	5	GMJ		
In Note, 1.6 Corrosion resistance added regarding * 240 HOURS MINIMUM OF NSS IS APPLICABLE FOR BODY, COVER AND FASTENERS* Product specification PS 334C was PSSC 192C					
12577	02.07.13	6	RAR		
Drawing pictorially modified inline with Base Cover. Drawing redrawn.					



CIRCUIT DIAGRAM



MSP -/- REPAIR KIT CONSISTS OF ITEM SHOWN

SL No.	AL PART No.	WABCO PART No.	DESCRIPTION	QTY
1		M336990	DUST COVER	4
2		M311290	DIAPHRAGM ASSEMBLY	1
3		M336970	GASKET	1
4		M311280	VALVE	6
5		M336900	SPRING	6
6		M932700	SEALING RING NG-12	5
7		M932720	SPRING ELEMENT NG-12	4
8		M932730	RETANING CLIP NG-12	4
9		M935980	SEALING RING NG-12	4
10		M935990	SEALING RING NG-12	4
11		M915670	SEALING RING	1
		M919710	GREASE SACHET	1

XVII STEEL	NO TREATMENT
XVI CAST IRON	PLATED
XV STEEL	ZINC IRON PLATED
XIV CAST IRON	NO TREATMENT
XIII ZINC ALLOY	ANODISED
XII PLASTIC	NO TREATMENT
XI RUBBER	NO TREATMENT
X STAINLESS STEEL	NO TREATMENT
IX BRASS	NO TREATMENT
VIII ZINC ALLOY	CHROMATED
VII ALUMINIUM ALLOY	ANODISED
VI ALUMINIUM ALLOY	CHROMATED
V CAST IRON	PAINTED
IV STEEL	POWDER COATED
III STEEL	PAINTED
II STEEL	PHOSPHATED
I STEEL	ZINC PLATED
PART MATERIAL CODE	SURFACE PROTECTION

DYNAMIC OPENING PRESSURE (bar)				RETAINED PRESSURE (bar)			
PORT 21	PORT 22	PORT 23	PORT 24	PORT 21	PORT 22	PORT 23	PORT 24
7.35±0.15	7.35±0.15	7.05±0.15	7.05±0.15	0	≥ 6.8	≥ 6.6	≥ 6.6
				≥ 6.8	0	≥ 6.6	≥ 6.6
				≥ 4.7	≥ 4.7	0	≥ 6.6
				≥ 4.7	≥ 4.7	≥ 6.6	0

	SIGN	DATE	MATERIAL	---
DRN	RAR	02.07.13	ALTERNATE MATERIAL	---
CHD	SSH	02.07.13	SURFACE PROTECTION	REFER TABLE
APD	KPN	02.07.13	RAW PART No.	---

CONFIDENTIAL DRAWING

THIS DRAWING IS THE SOLE PROPERTY OF WABCO. IT SHOULD NOT BE COPIED OR COMMUNICATED TO ANY PERSON WITHOUT THE WRITTEN APPROVAL OF WABCO.

© 2009

UNLESS OTHERWISE SPECIFIED ALL DIMENSIONS IN mm.

REMOVE BURRS AND SHARP EDGES FROM FINISHED PARTS. ALL DIMENSIONS ARE AFTER SURFACE PROTECTION/ TREATMENT

MALE THREAD TO IS 14962 (PART3) 6H : 2001
FEMALE THREAD TO IS 14962 (PART3) 6H : 2001

GENERAL TOLERANCES			
RANGE OF NOMINAL DIMENSIONS (± mm)			
≤ 50	≤ 50	≤ 180	≤ 400
1	2	3	4
100 mm			
FORCE, POWER, PRESSURE etc., (± %)			
10			

SCALE 1:1

WABCO

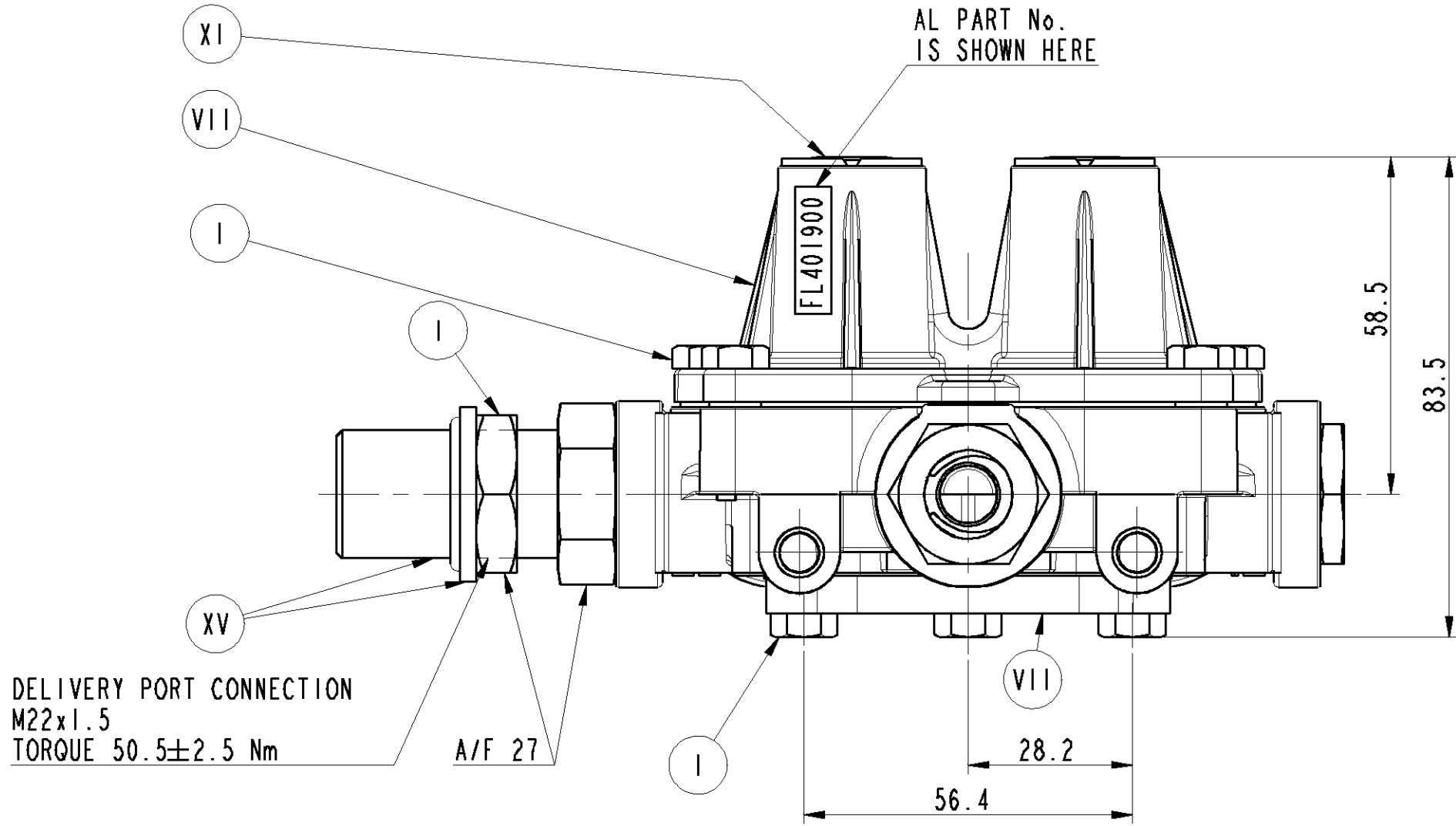
AMBATTUR, CHENNAI - 600058, INDIA

QUADRUPLE SYSTEM
PROTECTION VALVE

PART No.
M307670

GA

DO NOT SCALE IF IN DOUBT ASK



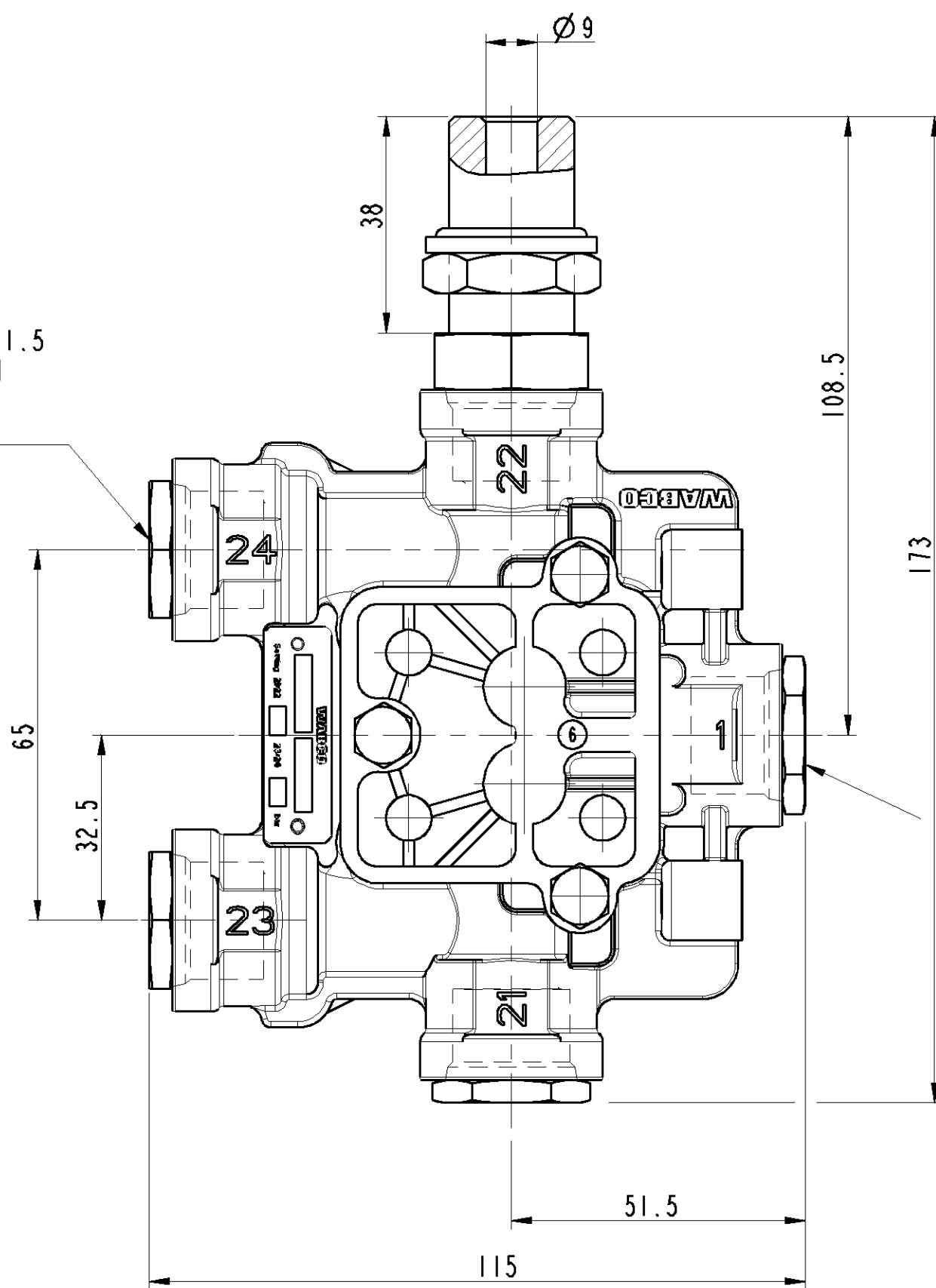
DELIVERY PORT CONNECTION
M22x1.5
TORQUE 50.5±2.5 Nm

XV

A/F 27

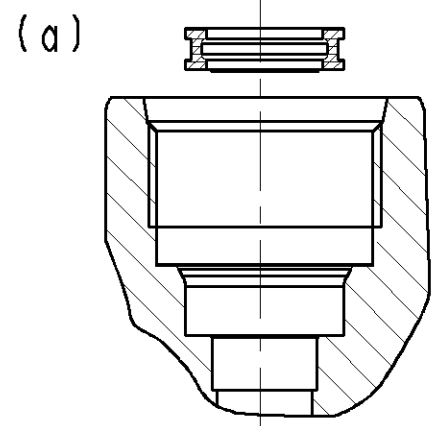
VII

3 DELIVERY PORT M22x1.5
TO SUIT VOSS PLUG IN
SYSTEMS 230
TORQUE 10±1 Nm

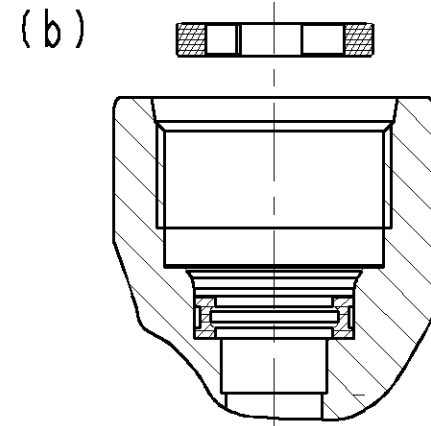


INLET PORT
M22x1.5, DEEP 13
TO SUIT VOSS PLUG IN
SYSTEMS 230
TORQUE 10±1 Nm

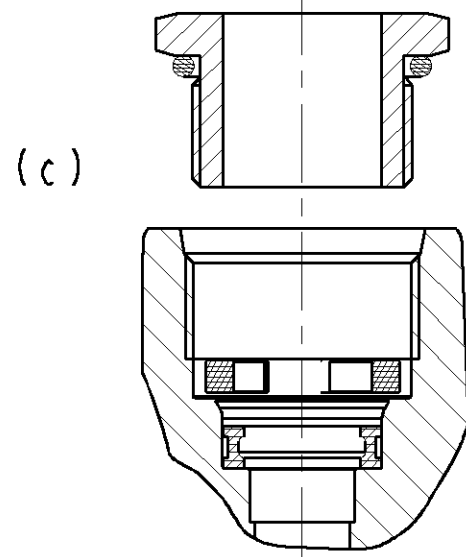
ASSEMBLY PROCEDURE



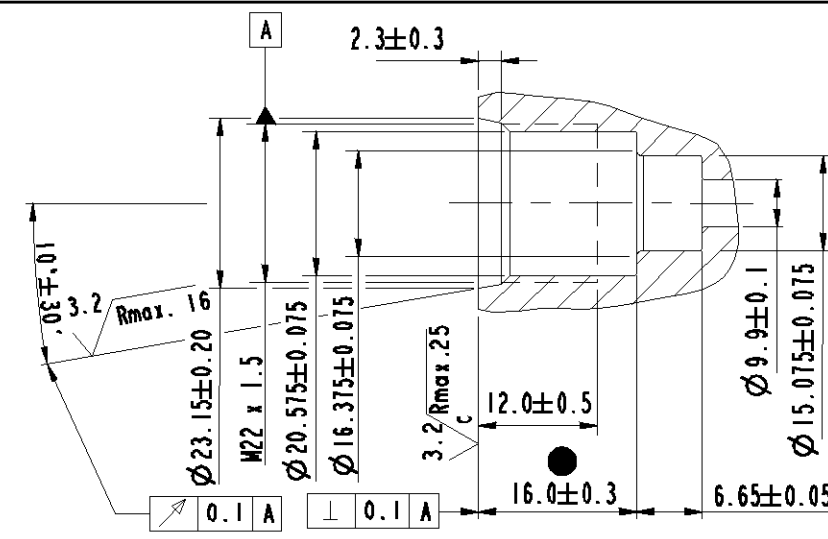
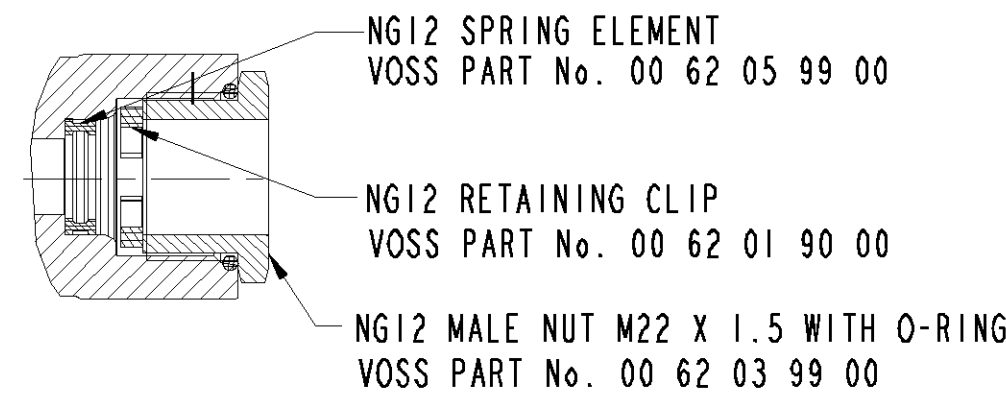
THE SPRING ELEMENT IS INSERTED INTO THE CHAMBER UNDER THE THREAD ROOT OF THE CONNECTION BORE (a) AND (b).



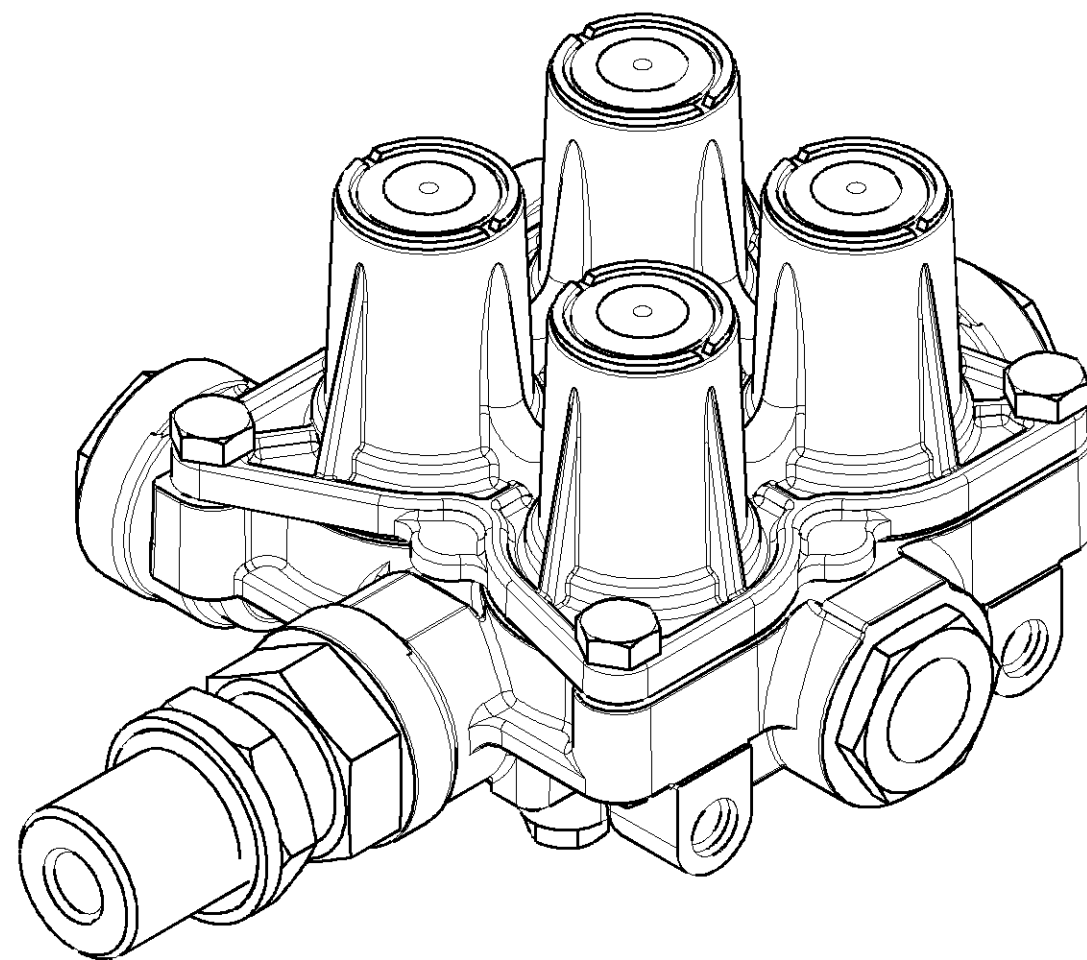
THE RETAINING CLIP IS INTRODUCED SO THAT IT RESTS FLAT ON THE THREAD ROOT (b) AND (c). THE SPRING ELEMENT AND RETAINING CLIP ARE SYMMETRICAL.



THE MALE FITTING PRE-ASSEMBLED WITH THE PRE-GREASED O-RING TO SEAL THE THREAD IS SCREWED BY HAND INTO THE TAPPED BORE (c) AND TIGHTENED.



DETAILS OF PORT MACHINING FOR M22x1.5



SL No.	NOTES	
1	PRODUCT SPECIFICATION AND RELIABILITY	
1.1	PRODUCT SPECIFICATION No. REV No.1, DATED 09.02.11	PS 334C
1.2	NORMAL WORKING PRESSURE	8 bar
1.3	MAXIMUM WORKING PRESSURE	10 bar
1.4	THERMAL RANGE OF OPERATION	-40° c TO +80° c
1.5	EQUIVALANT FLOW DIAMETER	7 mm
1.6	CORROSION RESISTANCE 240 HOURS MINIMUM OF NSS IS APPLICABLE FOR BODY, COVER AND FASTENERS	
2	WEIGHT	1.2 kg
3	OPENING PRESSURE	REFER TABLE
4	ELEMENTS ARE SET WITH AIR FLOW RATE OF 90 NORMAL l/min	
5	QUALITY COMPLIANCE TESTS WILL BE CARRIED OUT REGULARLY AS PER CLAUSE No. 13 OF PSSC 192C	
6	OPEN PORTS AND MALE THREADS ARE FITTED WITH CLOUSER PLUGS/CLOSURE SLEEVES FOR STORAGE AND TRANSIT PURPOSE	