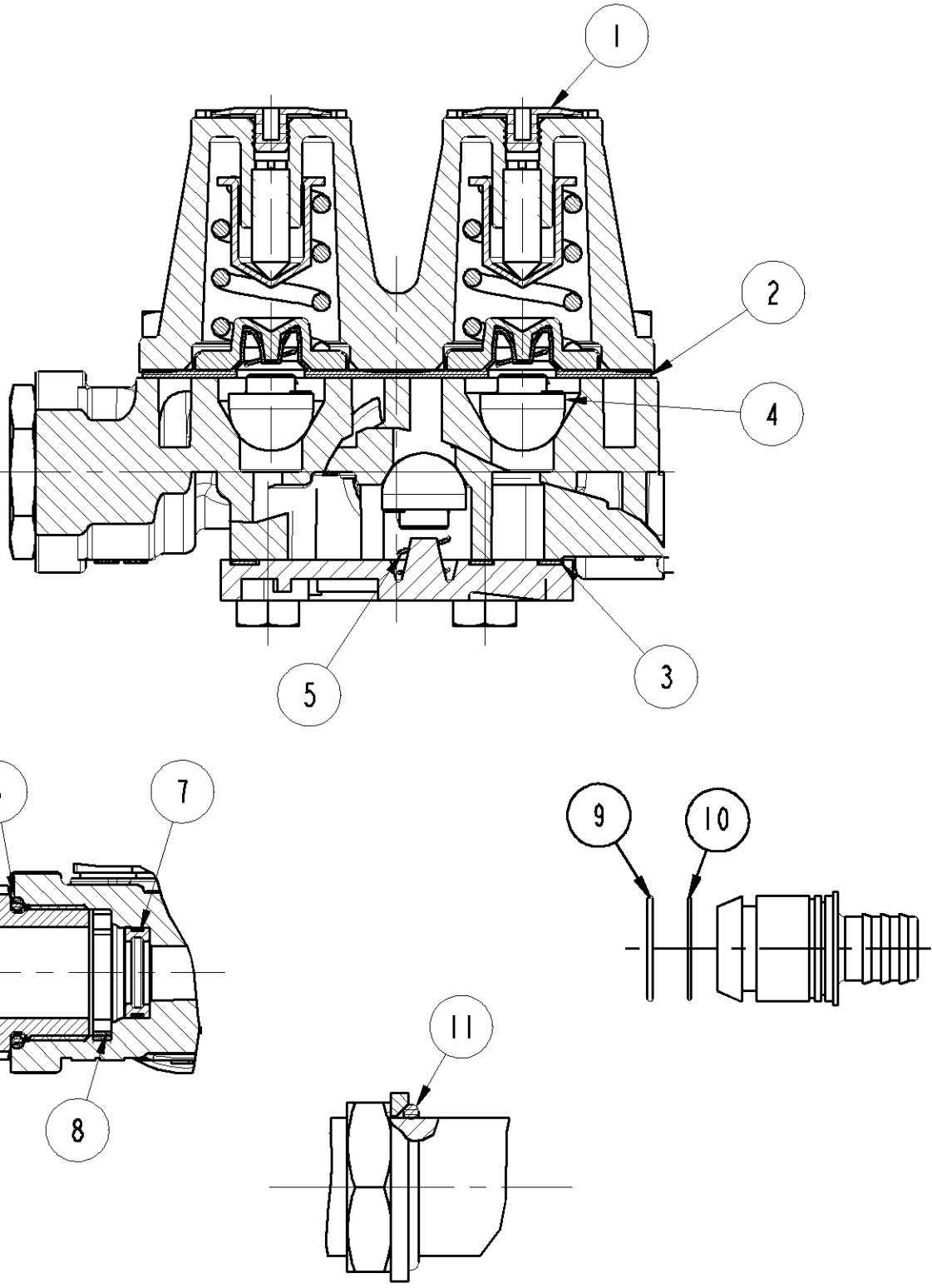
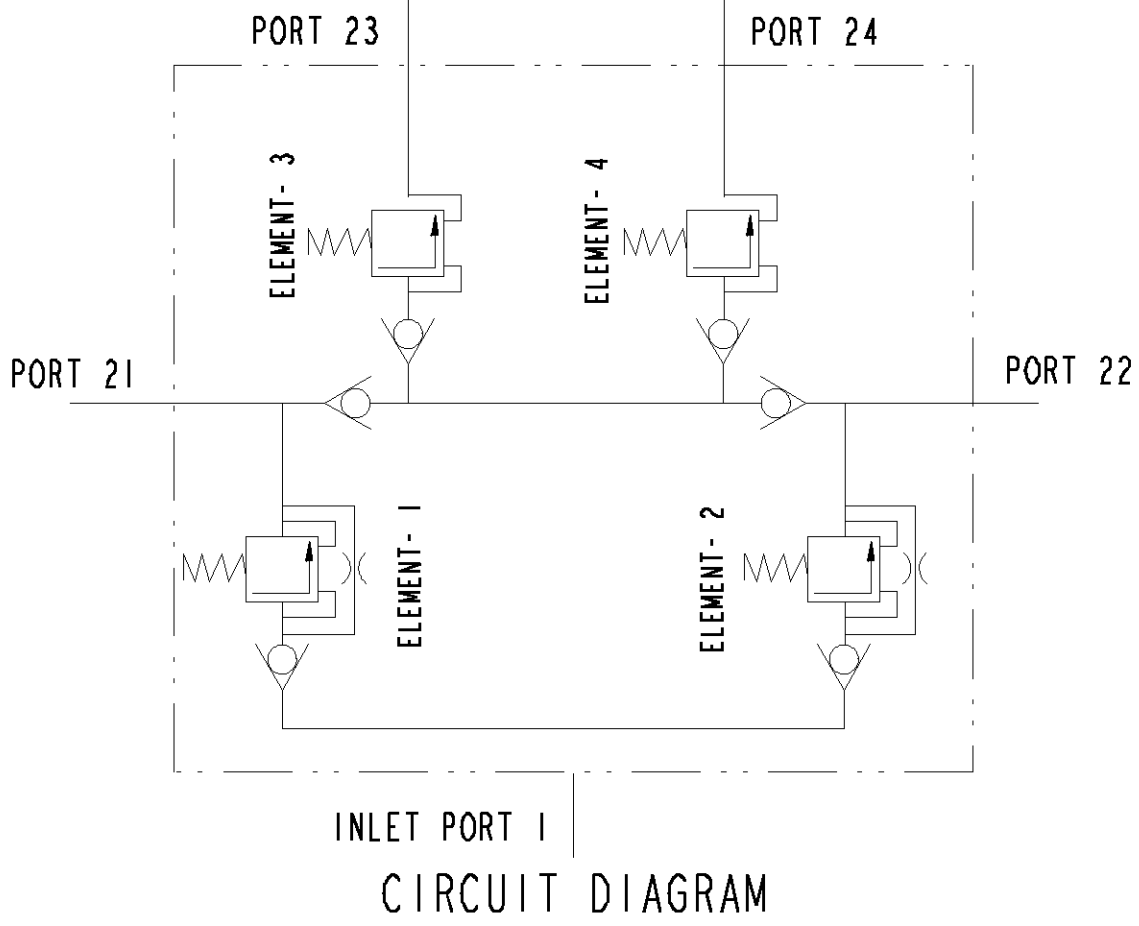


PART No.		M308110		GA	
ENGINEERING CHANGES					
ECN No.	DATE	REV	SIGN		
11707	12.11.09	NEW	RBS		
11950	02.09.10	1	SSR		
Lock nut - M912740, Special washer- M915680, and Sealing ring - M915670 added. Drawing redrawn.					
12083	16.03.11	2	RBS		
Drawing template WABCO was WABCO-TVSC (INDIA) LIMITED. Drawing pictorially modified inline with parts. Drawing redrawn.					
12305	25.04.12	3	GMJ		
In Note, Corrosion resistance added regarding " 240 HOURS MINIMUM OF NSS IS APPLICABLE FOR BODY, COVER AND FASTENERS" Product Specification PS 334C was PSSC 194C. Drawing redrawn.					
12517	02.07.13	4	RAR		
Drawing pictorially modified inline with Base Cover. Drawing redrawn.					



MSP 3/65 REPAIR KIT CONSISTS OF ITEM SHOWN

SL No.	MFTPL PART No.	WABCO PART No.	DESCRIPTION	QTY
1		M336990	DUST COVER	4
2		M311290	DIAPHRAGM ASSEMBLY	1
3		M336970	GASKET	1
4		M311280	VALVE	6
5		M336900	SPRING	6
6		M932700	SEALING RING NG-12	5
7		M932720	SPRING ELEMENT NG-12	5
8		M932730	RETANING CLIP NG-12	5
9		M935980	SEALING RING NG-12	5
10		M935990	SEALING RING NG-12	5
11		M915670	SEALING RING	1
		M919710	GREASE SACHET	1

- CRITICAL
- MAJOR
- NO SYMBOL - MINOR

XVII	STEEL	NO TREATMENT
XVI	CAST IRON	PLATED
XV	STEEL	ZINC IRON PLATED
XIV	CAST IRON	NO TREATMENT
XIII	ZINC ALLOY	ANODISED
XII	PLASTIC	NO TREATMENT
XI	RUBBER	NO TREATMENT
X	STAINLESS STEEL	NO TREATMENT
IX	BRASS	NO TREATMENT
VIII	ZINC ALLOY	CHROMATED
VII	ALUMINIUM ALLOY	ANODISED
VI	ALUMINIUM ALLOY	CHROMATED
V	CAST IRON	PAINTED
IV	STEEL	POWDER COATED
III	STEEL	PAINTED
II	STEEL	PHOSPHATED
I	STEEL	ZINC PLATED
PART MATERIAL CODE	SURFACE PROTECTION	

DYNAMIC OPENING PRESSURE (bar)				RETAINED PRESSURE (bar)			
PORT 21	PORT 22	PORT 23	PORT 24	PORT 21	PORT 22	PORT 23	PORT 24
7.35±0.15	7.35±0.15	7.05±0.15	7.05±0.15	0	≥ 6.8	≥ 6.6	≥ 6.6
				≥ 6.8	0	≥ 6.6	≥ 6.6
				≥ 4.7	≥ 4.7	0	≥ 6.6
				≥ 4.7	≥ 4.7	≥ 6.6	0

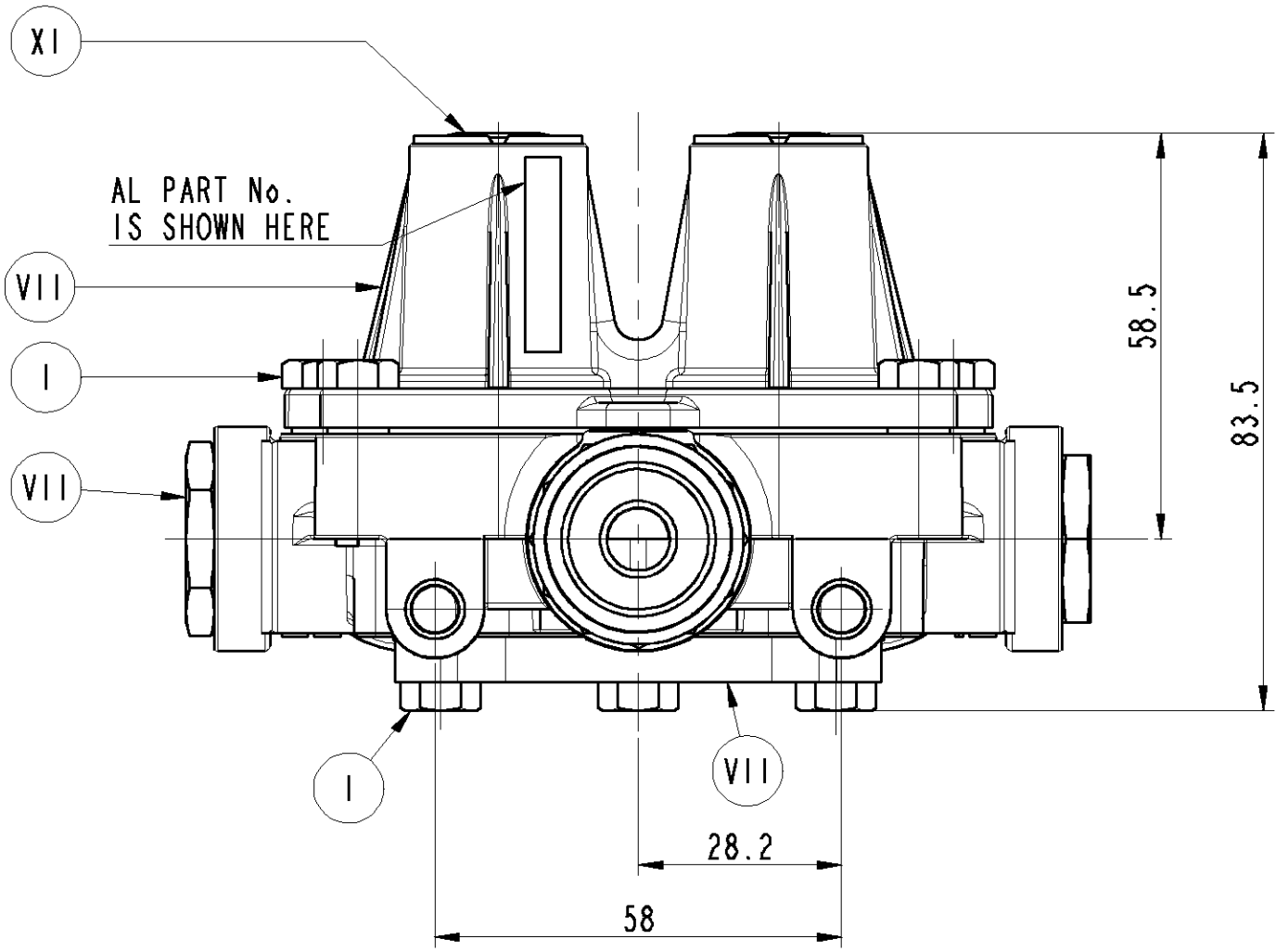
	SIGN	DATE	MATERIAL	----
DRN	RAR	02.07.13	ALTERNATE MATERIAL	----
CHD	SSH	02.07.13	SURFACE PROTECTION	REFER TABLE
APD	KPN	02.07.13	RAW PART No.	----

CONFIDENTIAL DRAWING

THIS DRAWING IS THE SOLE PROPERTY OF WABCO. IT SHOULD NOT BE COPIED OR COMMUNICATED TO ANY PERSON WITHOUT THE WRITTEN APPROVAL OF WABCO.

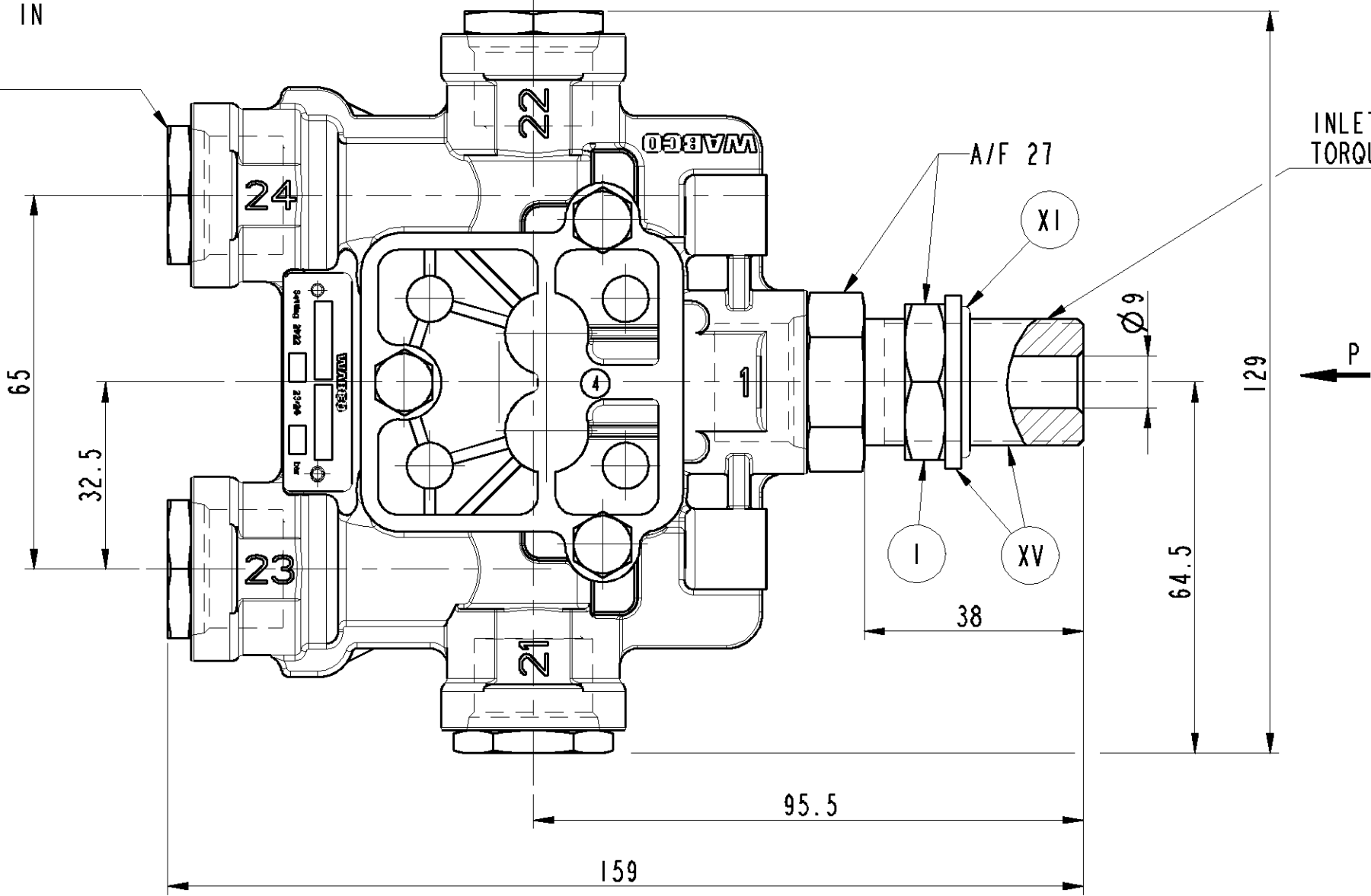
© 2009

DO NOT SCALE IF IN DOUBT ASK



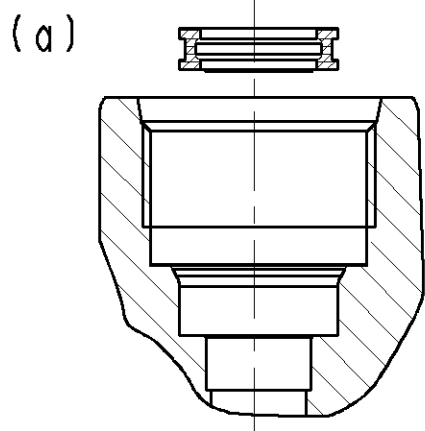
VIEW P

4 DELIVERY PORT M22x1.5  
TO SUIT VOSS PLUG IN  
SYSTEMS 230  
TORQUE 10±1 Nm

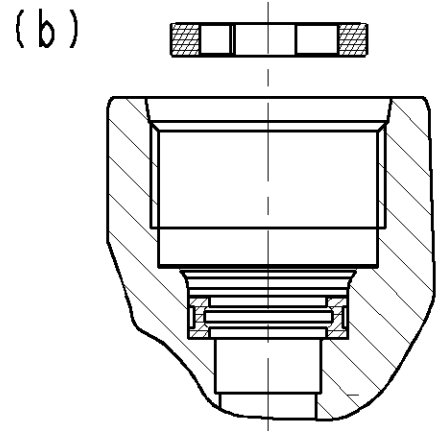


INLET PORT CONNECTION M22x1.5  
TORQUE 50.5±2.5 Nm

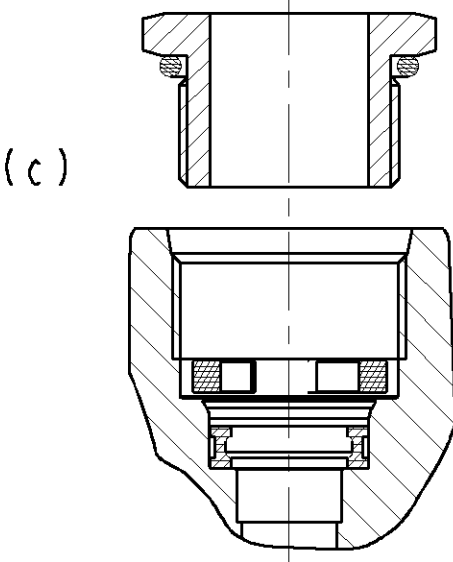
### ASSEMBLY PROCEDURE



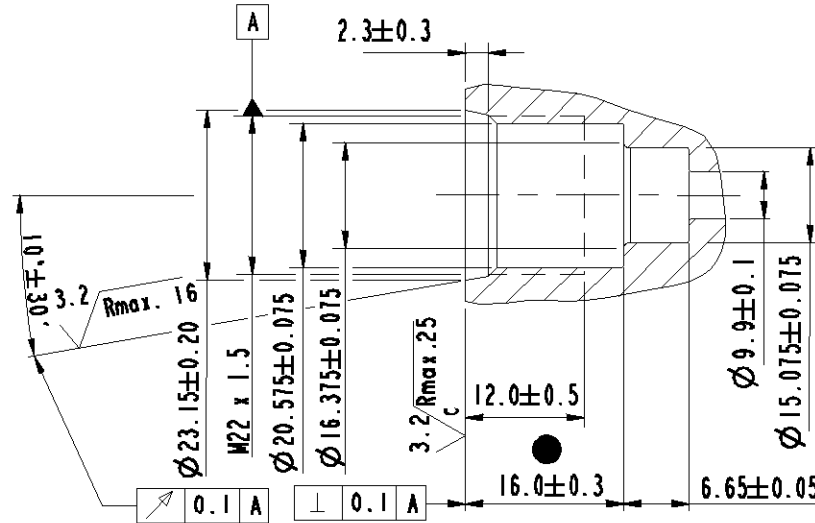
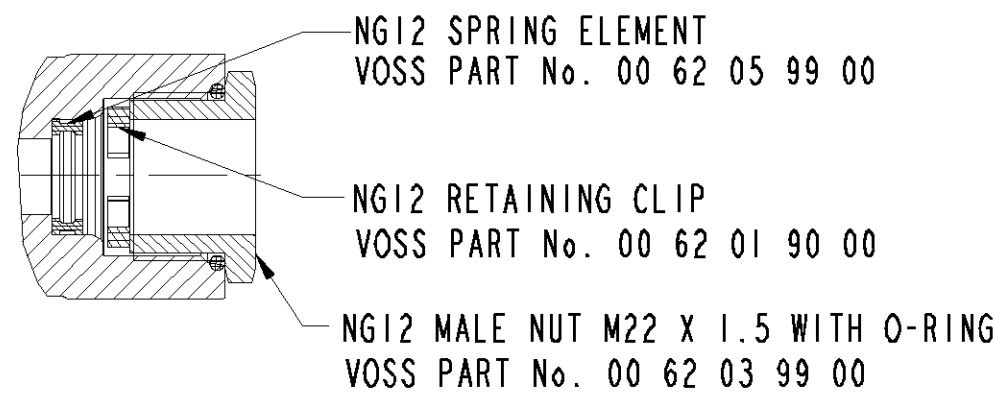
THE SPRING ELEMENT IS INSERTED INTO THE CHAMBER UNDER THE THREAD ROOT OF THE CONNECTION BORE (a) AND (b).



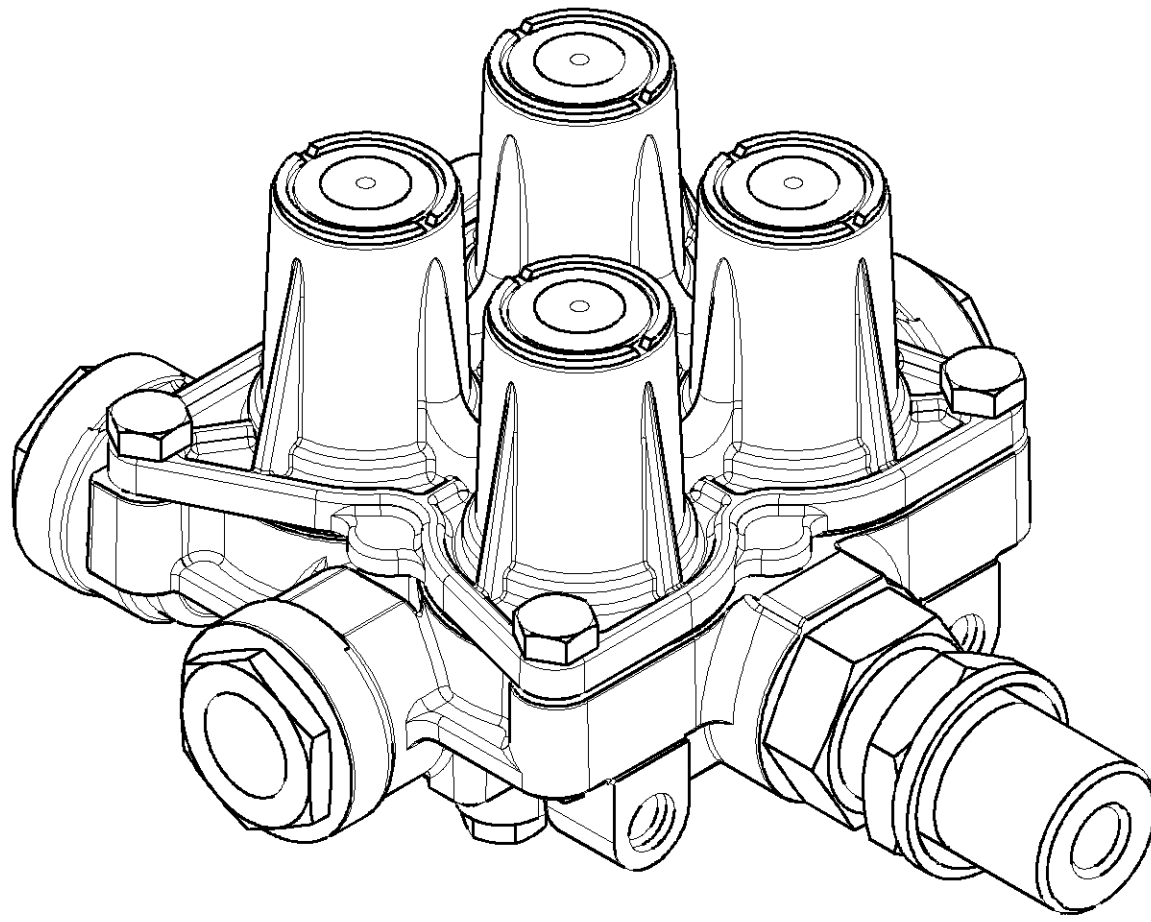
THE RETAINING CLIP IS INTRODUCED SO THAT IT RESTS FLAT ON THE THREAD ROOT (b) AND (c). THE SPRING ELEMENT AND RETAINING CLIP ARE SYMMETRICAL.



THE MALE FITTING PRE-ASSEMBLED WITH THE PRE-GREASED O-RING TO SEAL THE THREAD IS SCREWED BY HAND INTO THE TAPPED BORE (c) AND TIGHTENED.



DETAILS OF PORT MACHINING FOR M22x1.5



SL No.	NOTES	
1	PRODUCT SPECIFICATION AND RELIABILITY	
1.1	PRODUCT SPECIFICATION No. REV No. 1, DATED 09.02.11	PS 334C
1.2	NORMAL WORKING PRESSURE	8 bar
1.3	MAXIMUM WORKING PRESSURE	10 bar
1.4	THERMAL RANGE OF OPERATION	-40°c to +80°c
1.5	EQUIVALANT FLOW DIAMETER	7 mm
1.6	CORROSION RESISTANCE 240 HOURS MINIMUM OF NSS IS APPLICABLE FOR BODY, COVER AND FASTENERS	
2	WEIGHT	1.2 kg
3	OPENING PRESURE	REFER TABLE
4	ELEMENTS ARE SET WITH AIR FLOW RATE OF 90 NORMAL l/min SC 6 COMPRESSOR WITH 144 cm³ DISPLACEMENT AT 1000 r/min	
5	QUALITY COMPLIANCE TESTS WILL BE CARRIED OUT REGULARLY AS PER CLAUSE No. 13 OF PSSC 192C	
6	OPEN PORTS ARE FITTED WITH CLOUSER PLUGS FOR STORAGE AND TRANSIT PURPOSE	

**WABCO**

AMBATTUR, CHENNAI - 600058, INDIA

QUADRUPLE SYSTEM  
PROTECTION VALVE

PART No.

M308110

GA