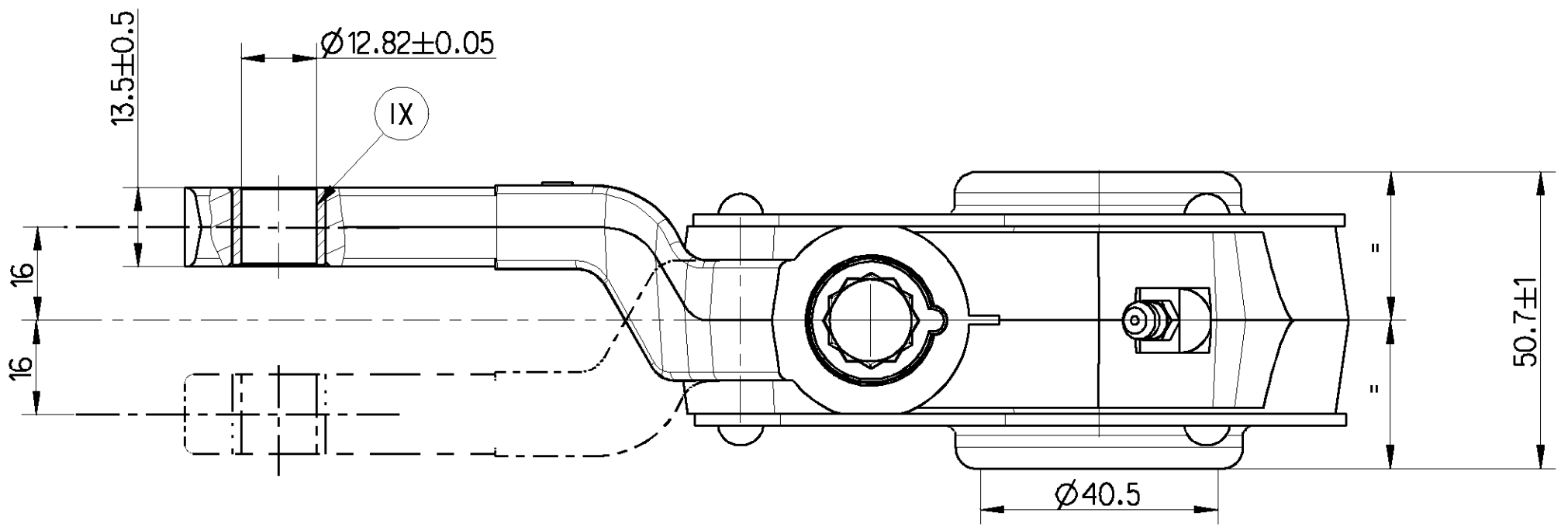
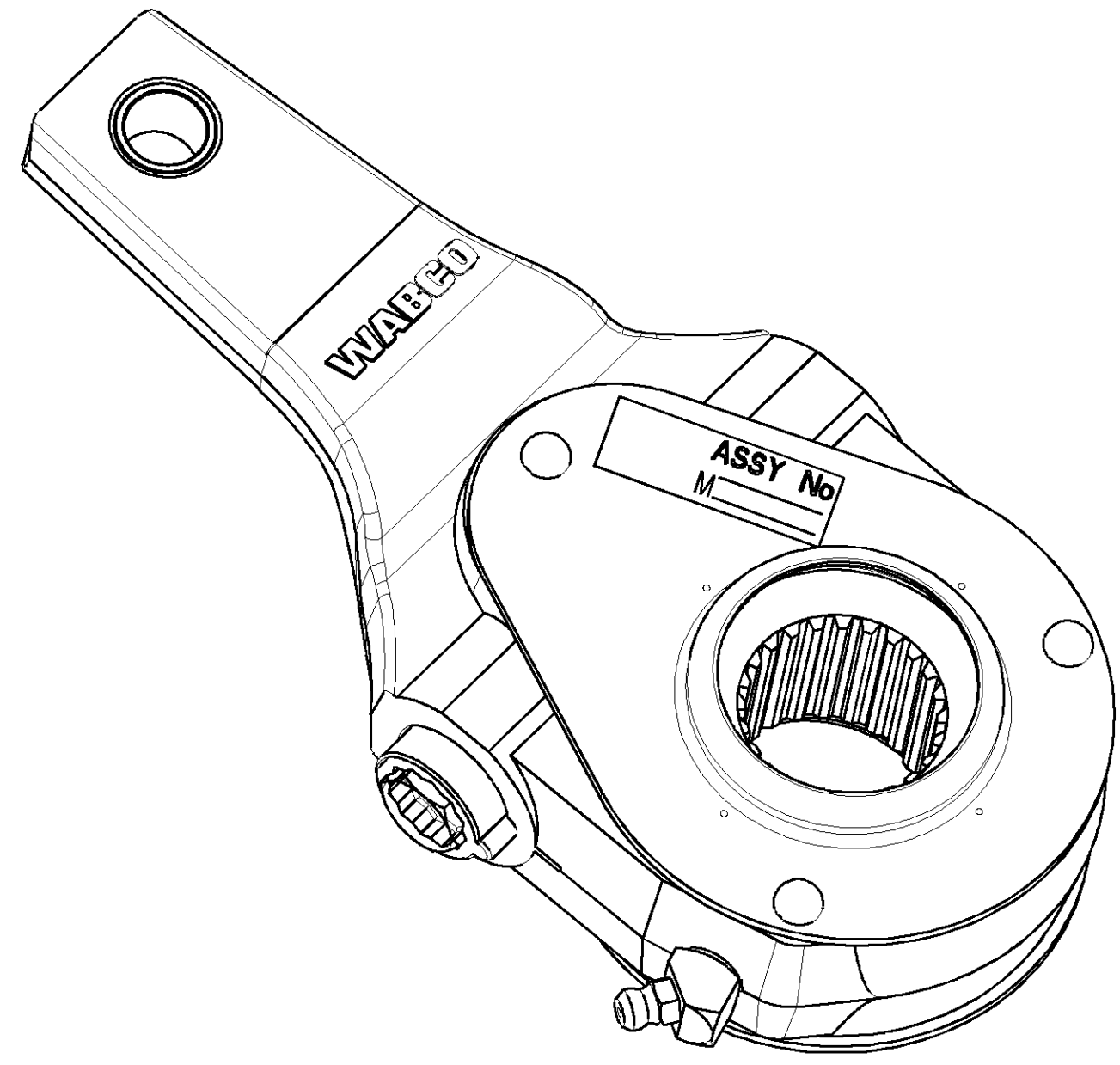
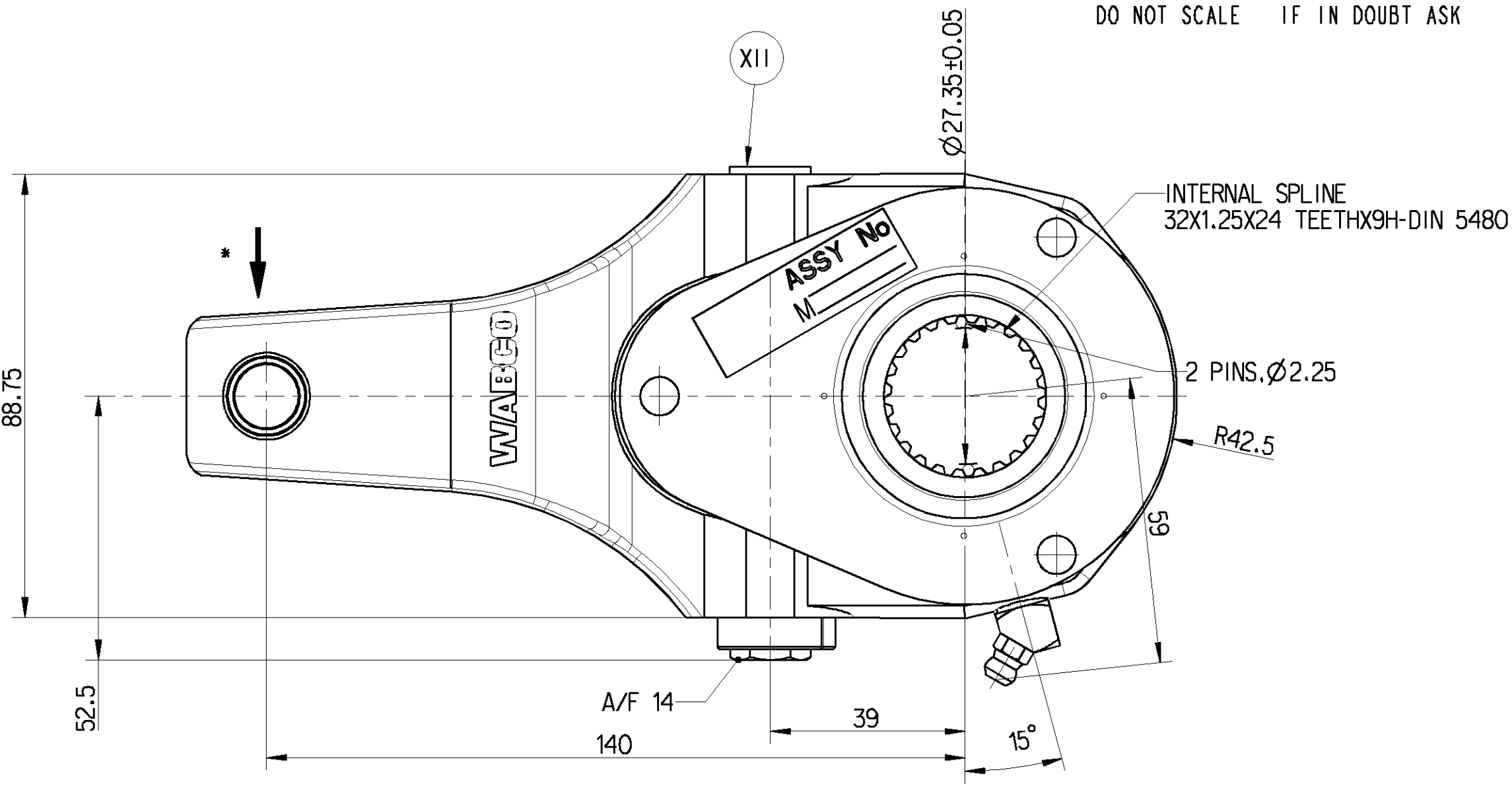


PART No.  
M820270etcGA

ENGINEERING CHANGES			
ECN No.	DATE	REV	SIGN
8287	03.11.00	New	
8418	13.06.01	1	KPN
3D view added. Note regarding, Adequate grease .... assembly added. Drawing converted to Pro-E drawing.			
8948	22.11.01	2	ASK
Dimension 51.8/49.8 was 50.8. Drawing redrawn.			
12096	30.03.11	3	RBS
Drawing modified inline with parts.Drawing redrawn			
12122	14.06.11	4	SMN
R16 deleted. 156 added. Dim89 and 53 were Dim80 and 48 respectively. PS 41C issue no.6 dated 14.06.11 was PSSC 41C issue no.5 dated 07.06.05.Dimension indication changed to nominal and bilateral tolerance from upper and lower limits. Drawing redrawn.			



XII	PLASTIC	NO TREATMENT
XI	RUBBER	NO TREATMENT
X	STAINLESS STEEL	NO TREATMENT
IX	BRASS	NO TREATMENT
VIII	ZINC ALLOY	CHROMATED
VII	ALUMINIUM ALLOY	ANODISED
VI	ALUMINIUM ALLOY	CHROMATED
V	CAST IRON	PAINTED
IV	STEEL	POWDER COATED
III	STEEL	PAINTED
II	STEEL	PHOSPHATED
I	STEEL	ZINC PLATED
PART CODE	MATERIAL	SURFACE PROTECTION

● CRITICAL

● MAJOR

NO SYMBOL - MINOR

PART No.	TYPE	REMARKS
M820270	RH	AS SHOWN
M820280	LH	AS IN CHAIN DOTTED

PRODUCT SPECIFICATION No. PS 41C, ISSUE No. 6 DATED 14.06.11  
NORMAL RATED TORQUE: 1250 Nm  
MAXIMUM TORQUE : 1750 Nm  
\* THIS UNIT IS TO BE INSTALLED SUCH THAT THE DIRECTION OF THE ACTUATING FORCE IS ALWAYS AS INDICATED BY THE ARROW.  
ADEQUATE GREASE PACKED BETWEEN WORM AND WORM GEAR DURING ASSEMBLY  
PAINTED WITH STEEL GREY No. 698, IS: 5 -1978

**WABCO**  
AMBATTUR, CHENNAI - 600058, INDIA

	SIGN	DATE	MATERIAL	----	CONFIDENTIAL DRAWING THIS DRAWING IS THE SOLE PROPERTY OF WABCO. IT SHOULD NOT BE COPIED OR COMMUNICATED TO ANY PERSON WITHOUT THE WRITTEN APPROVAL OF WABCO. © 2000	UNLESS OTHERWISE SPECIFIED ALL DIMENSION IN mm. REMOVE BURRS AND SHARP EDGES FROM FINISHED PARTS. ALL DIMENSIONS ARE AFTER SURFACE PROTECTION / TREATMENT MALE THREAD TO IS 14962 (PART3) 6H : 2001 FEMALE THREAD TO IS 14962 (PART3) 6H : 2001	GENERAL TOLERANCES					SCALE 1:1	SLACK ADJUSTER (TYPE 15)	PART No. M820270etcGA
DRN	SMN	02.06.11	ALTERNATE MATERIAL	---			RANGE OF NOMINAL DIMENSIONS ( ± mm )			FORCE, POWER, PRESSURE etc.. ( ± % )				
CHD	JJJ	02.06.11	SURFACE PROTECTION	REFER TABLE			≤ 50	≥ 50	≥ 180		≥ 400	≥ 400		
APD	KPN	02.06.11	RAW PART No.	---			1	2	3	4	3	10		