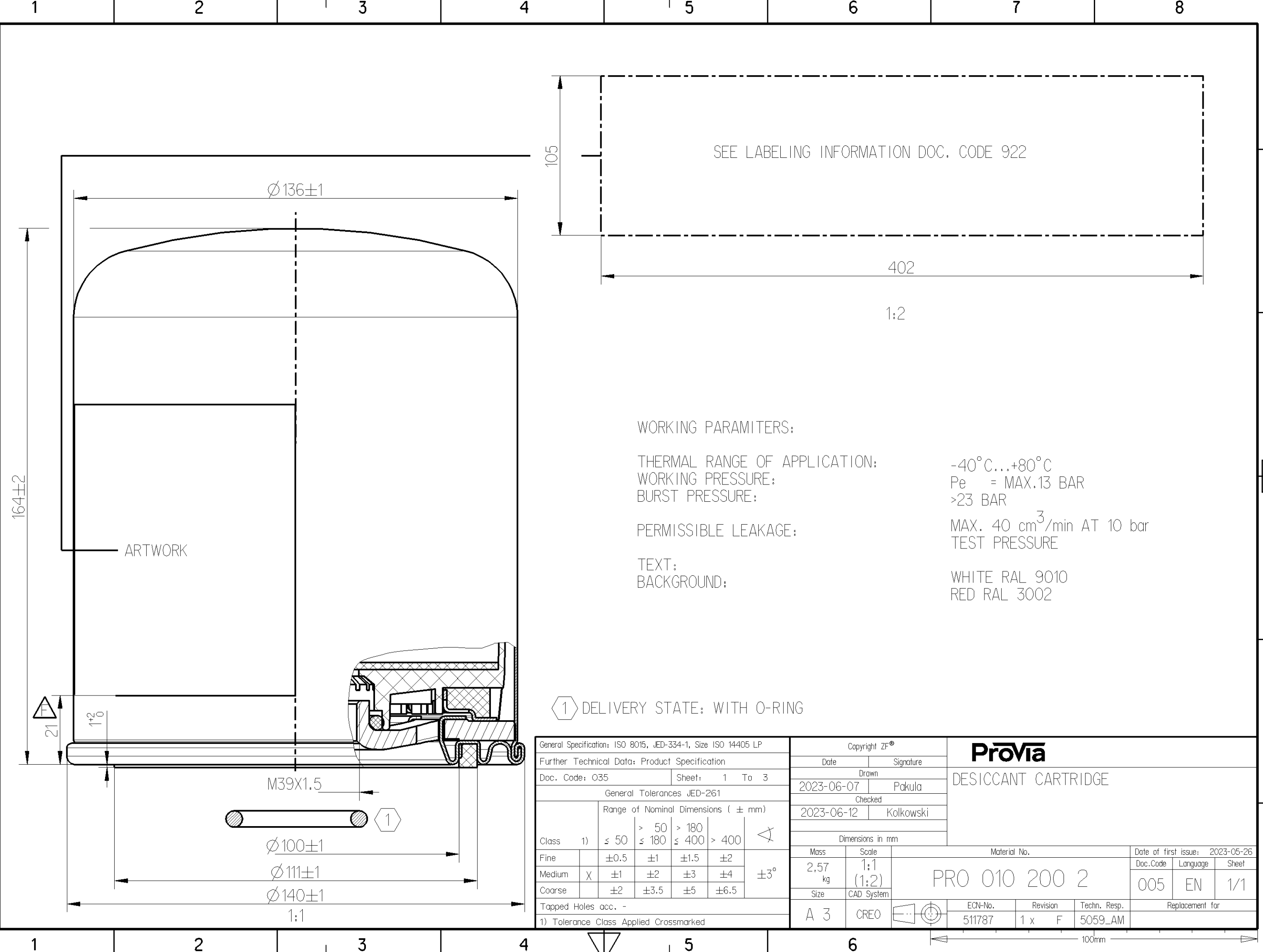


Non è permesso consegnare a terzi o riprodurre questo documento, né utilizzarne il contenuto o renderlo comunque noto a terzi senza autorizzazione esplicita. Ogni infrazione costituirà un evidente abuso e comporterà il risarcimento dei danni subiti. È fatta riserva di tutti i diritti derivanti da brevetti o modelli.

Toute communication ou reproduction de ce document, toute exploitation ou communication de son contenu sont interdites, sauf autorisation expresse. Tout manquement à cette règle constitue un abus évident et expose son auteur au versement de dommages et intérêts. Tous droits de propriété industrielle réservés, notamment en matière de brevets et de modèles.

Copying of this document and giving it to others and the use or communication of the contents thereof, are forbidden without express authority. Controvention of this restriction will constitute an evident abuse and result in a liability to the payment of damages. All rights are reserved in the event of the grant of patent or registration of a utility model or design. This document is the subject of copyright.

Weitergabe sowie Vervielfältigung dieser Unterlage, Verwertung und Mitteilung ihres Inhalts nicht gestattet, soweit nicht ausdrücklich zugestanden. Zuwiderhandlungen stellen einen offensichtlichen Missbrauch dar und verpflichten zu Schadensersatz. Alle Rechte fuer den Fall der Patenterteilung oder Gebrauchsmuster-Eintragung vorbehalten.



SEE LABELING INFORMATION DOC. CODE 922

WORKING PARAMETERS:

THERMAL RANGE OF APPLICATION: -40°C...+80°C
 WORKING PRESSURE: Pe = MAX.13 BAR
 BURST PRESSURE: >23 BAR
 PERMISSIBLE LEAKAGE: MAX. 40 cm³/min AT 10 bar
 TEST PRESSURE
 TEXT: WHITE RAL 9010
 BACKGROUND: RED RAL 3002

1 DELIVERY STATE: WITH O-RING

| | | | | | |
|---|---------------|-------------------------------|----------------|---------------------------------|-----|
| General Specification: ISO 8015, JED-334-1, Size ISO 14405 LP | | Copyright ZF® | | DESICCANT CARTRIDGE | |
| Further Technical Data: Product Specification | | Date | Signature | | |
| Doc. Code: O35 | Sheet: 1 To 3 | Drawn | Pakula | | |
| General Tolerances JED-261 | | Checked | Kolkowski | | |
| Range of Nominal Dimensions (± mm) | | Dimensions in mm | | Material No. | |
| Class 1) | ≤ 50 | > 50 ≤ 180 | > 180 ≤ 400 | > 400 | ±3° |
| Fine | ±0.5 | ±1 | ±1.5 | ±2 | ±3° |
| Medium | ±1 | ±2 | ±3 | ±4 | |
| Coarse | ±2 | ±3.5 | ±5 | ±6.5 | |
| Tapped Holes acc. - | | Mass | Scale | Date of first issue: 2023-05-26 | |
| 1) Tolerance Class Applied Crossmarked | | 2,57 kg | 1:1 (1:2) | Doc.Code Language Sheet | |
| | | Size | CAD System | 005 EN 1/1 | |
| | | A 3 | CREO | PRO 010 200 2 | |
| | | ECN-No. Revision Techn. Resp. | | Replacement for | |
| | | 511787 1 x F 5059_AM | | | |

100mm