

MATERIAL	SURFACE PROTECTION	
MATERIAL	OBERFLAECHENSCHUTZ	
MATERIAU	PROTECTION SUPERFICIELLE	
MATERIALE	PROTEZIONE SUPERFICIALE	
I	Fe	JED-051M4
II	Al	JED-029M1
III	Al	JED-029M1
IV	Al	JED-077-1
V	TPE	JED-284-1 / ###

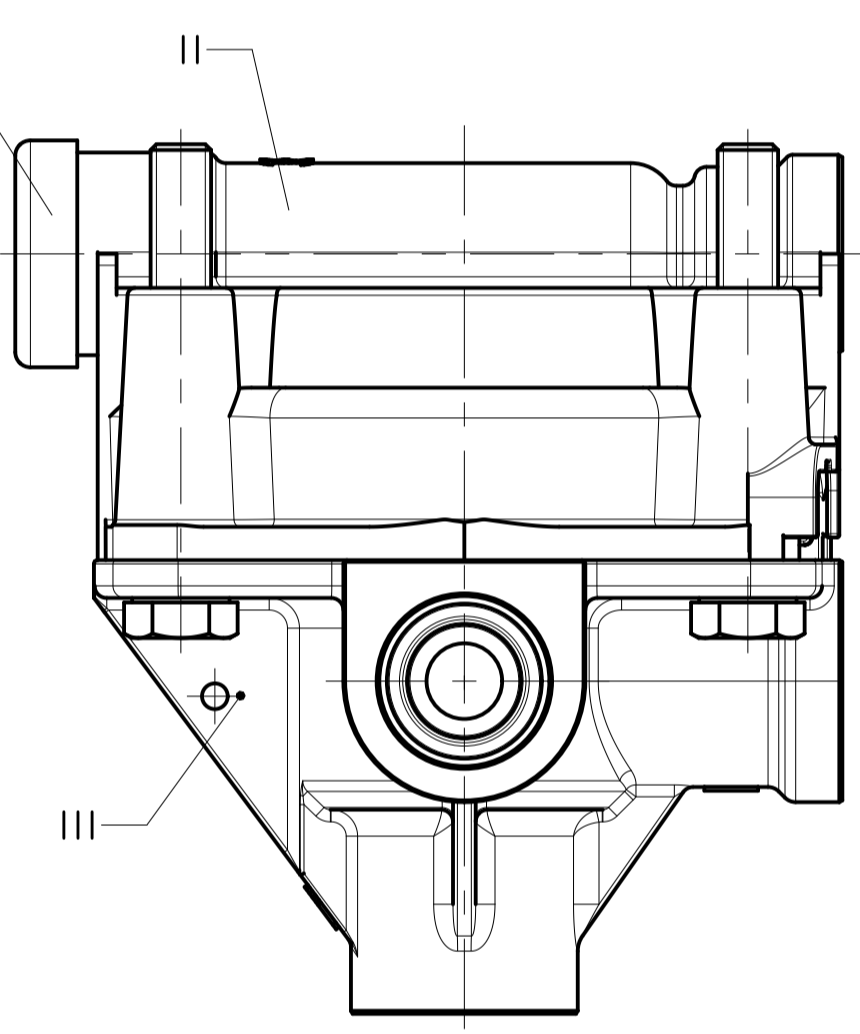
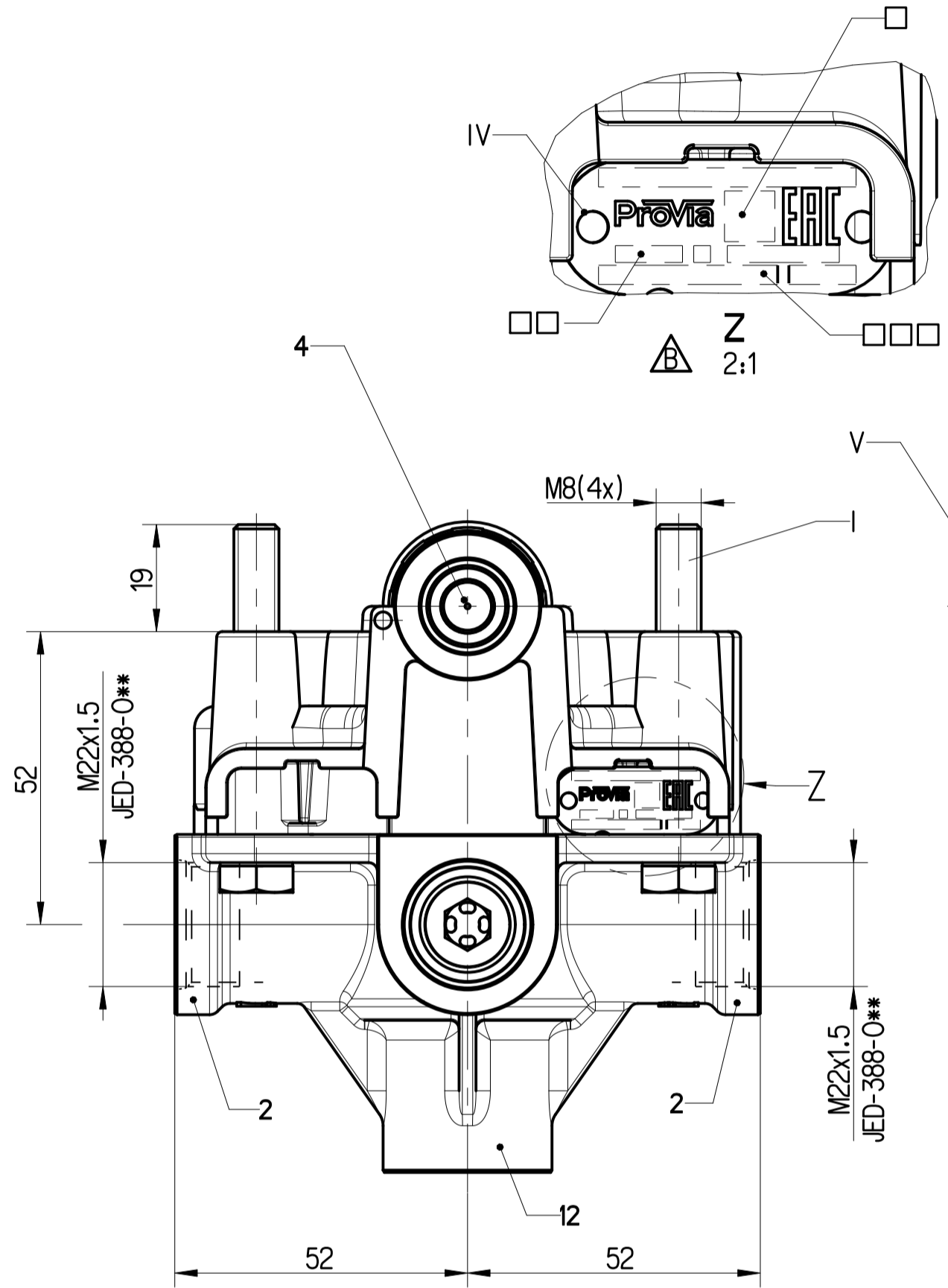
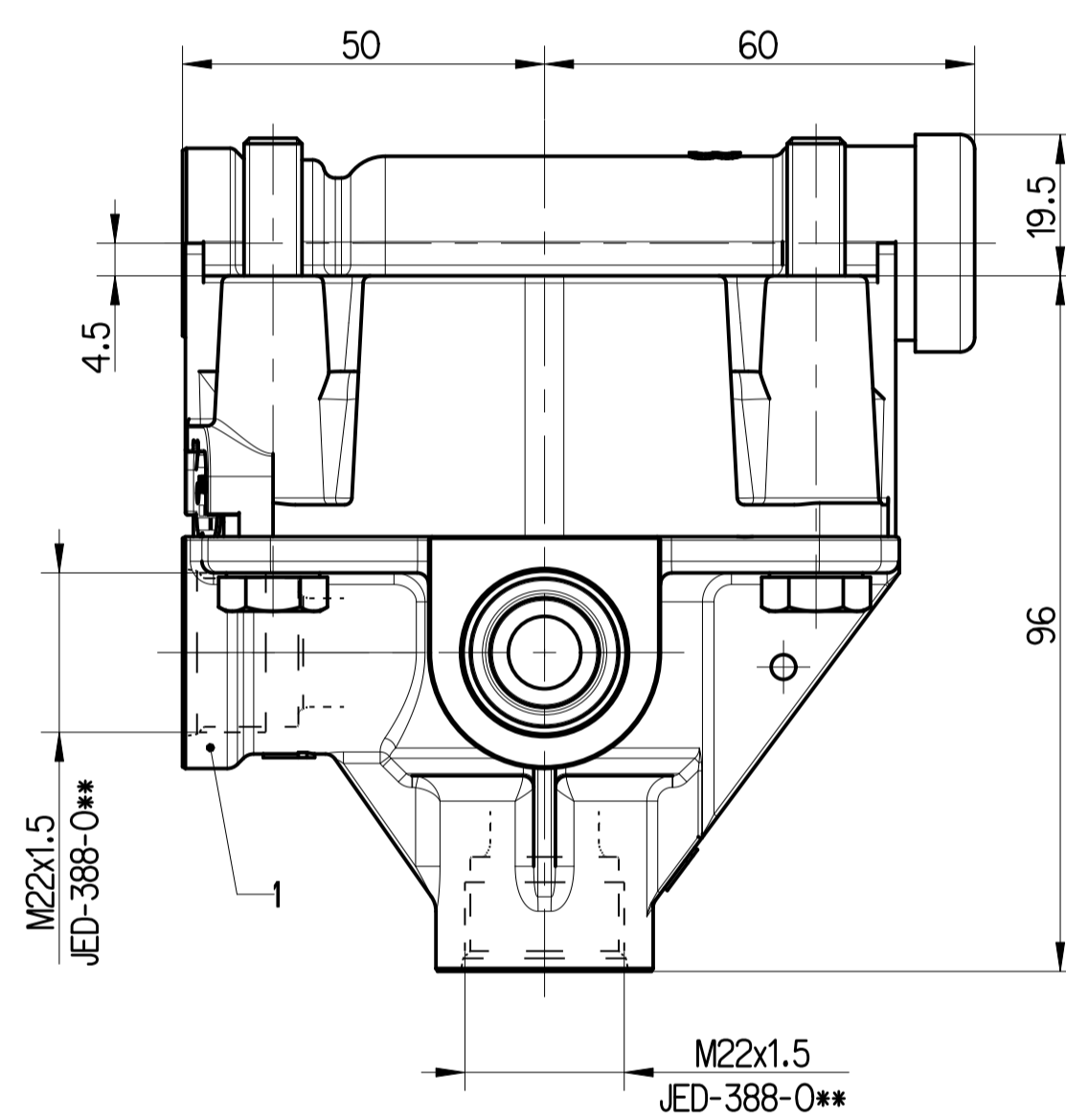
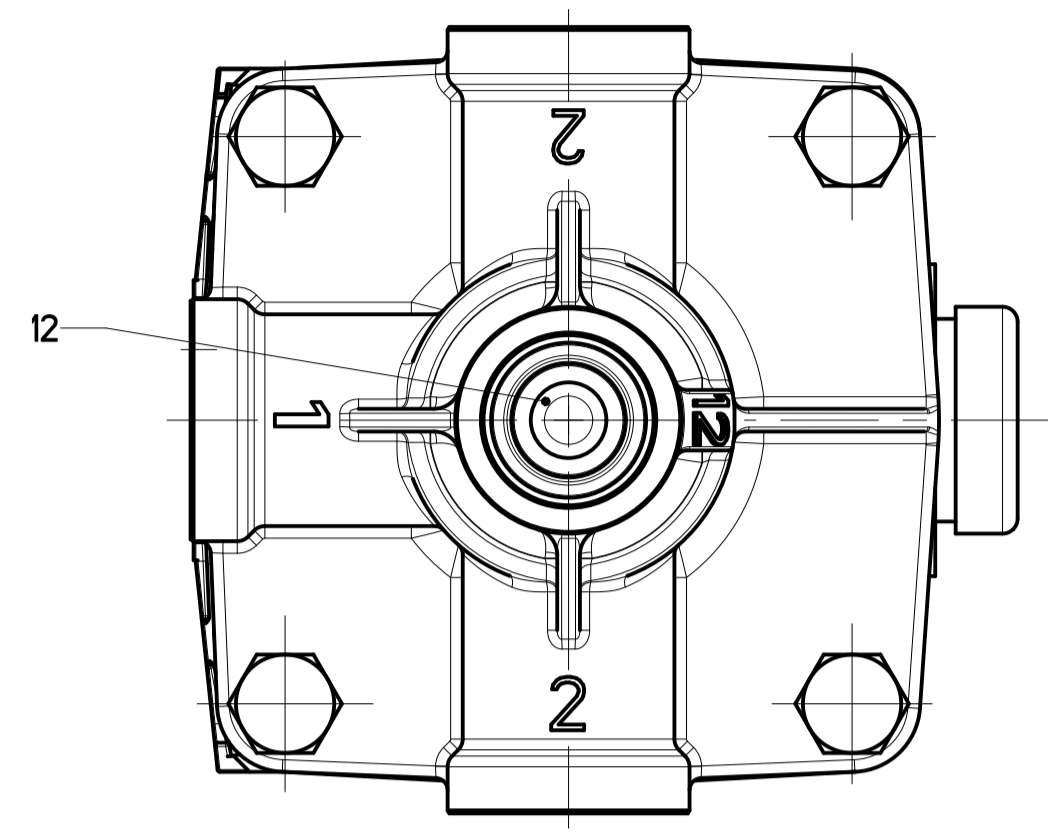
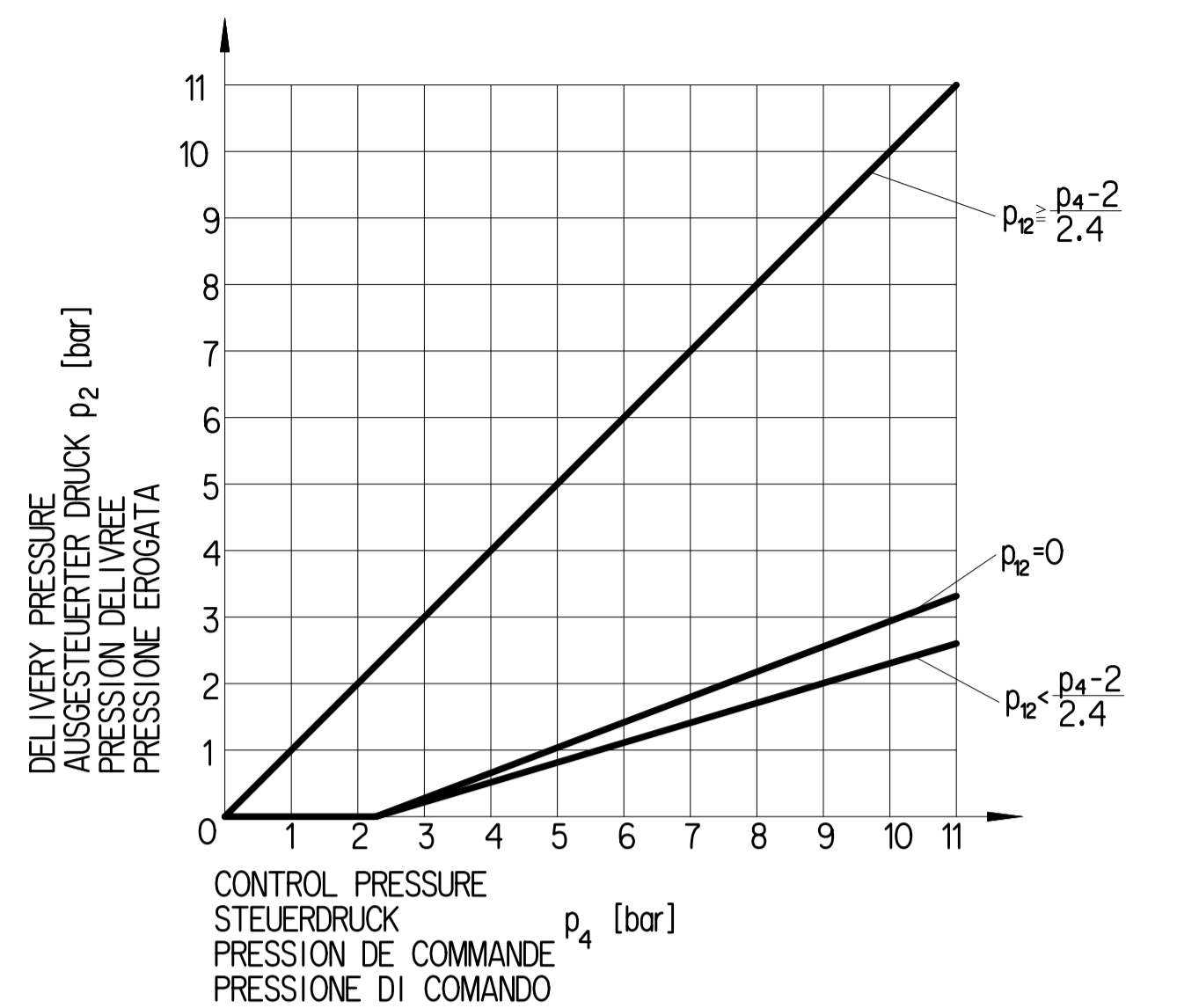
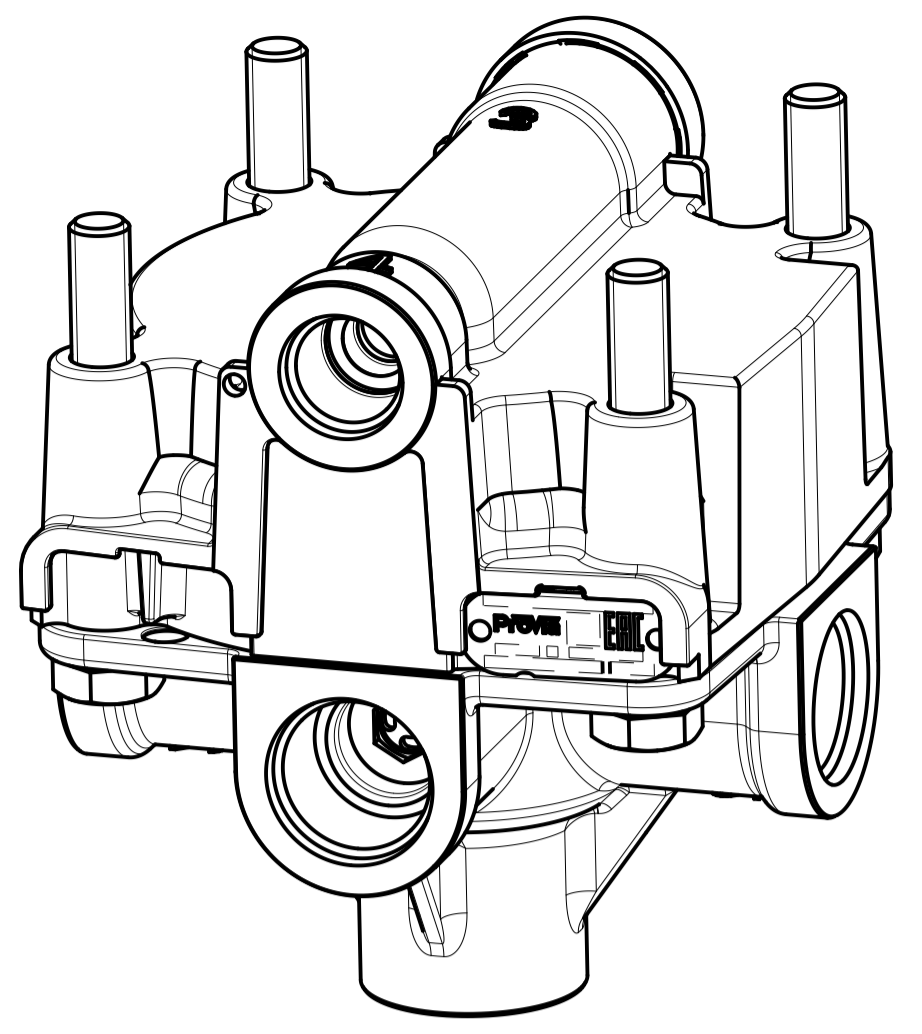
### BLACK  
SCHWARZ  
NOIR  
NERO

#### ANODIC OXIDATION  
ANODISCHE OXIDATION  
OXIDATION ANODIQUE  
OSSIDAZIONE ANODICA

DATA MATRIX CODE  
DATENMATRIXCODE  
CODE DE MATRICE DE DONNEES  
CODICE MATRICE DATI

WEEK / YEAR OF MANUFACTURE  
FERTIGUNGSWOCHE / -JAHR  
SEMAINE / ANNEE DE FABRICATION  
SETTIMANA / ANNO DELLA FABRICAZIONE

PROVIA-DEVICE NUMBER  
PROVIA-GERAETE NUMMER  
PROVIA-NUMERO D'APPAREIL  
PROVIA-NUMERO CODICE DELL APPARECCHIO



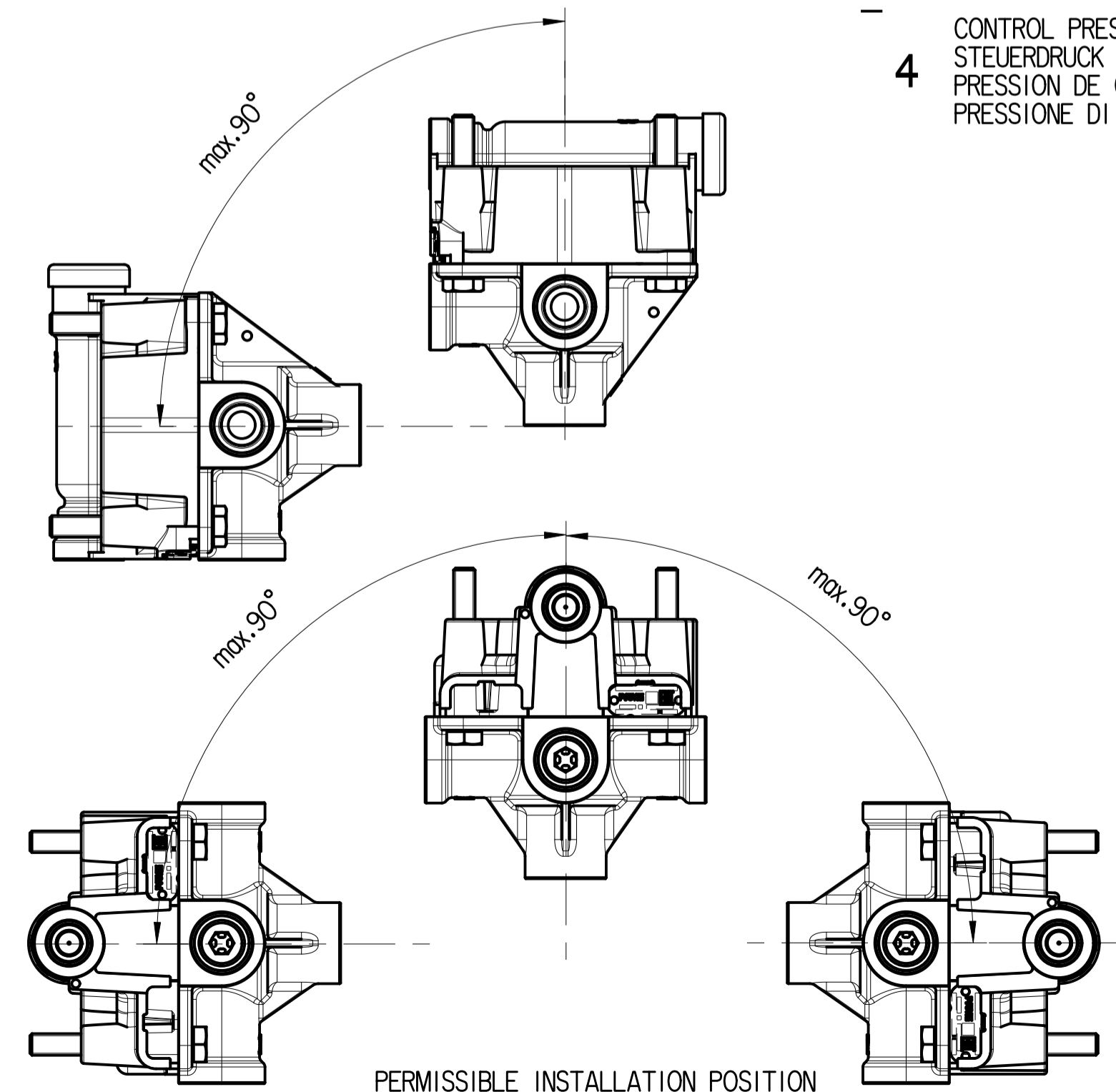
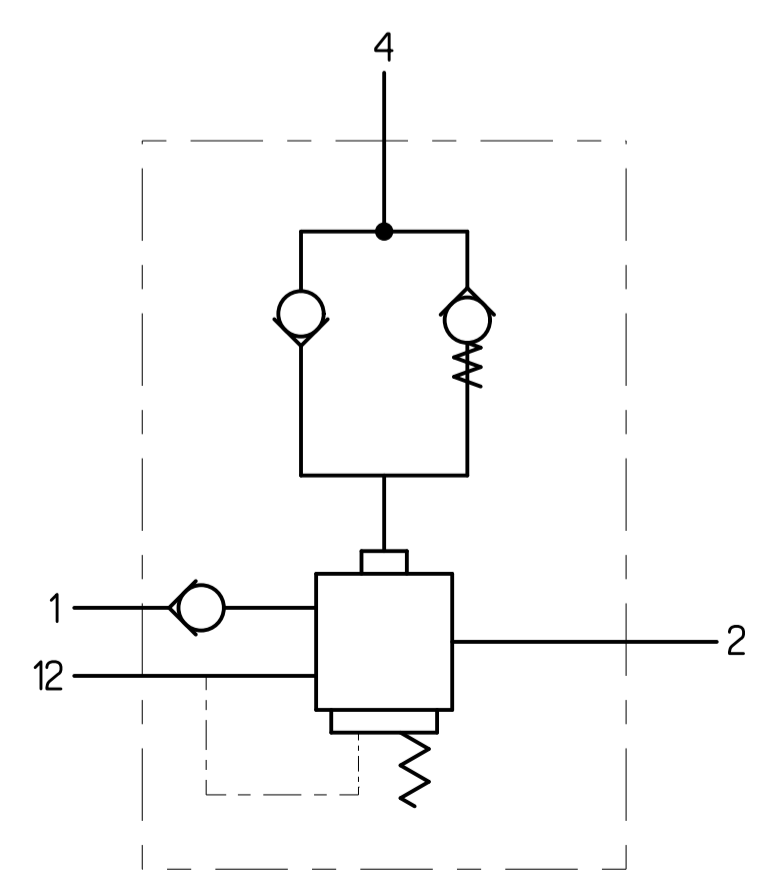
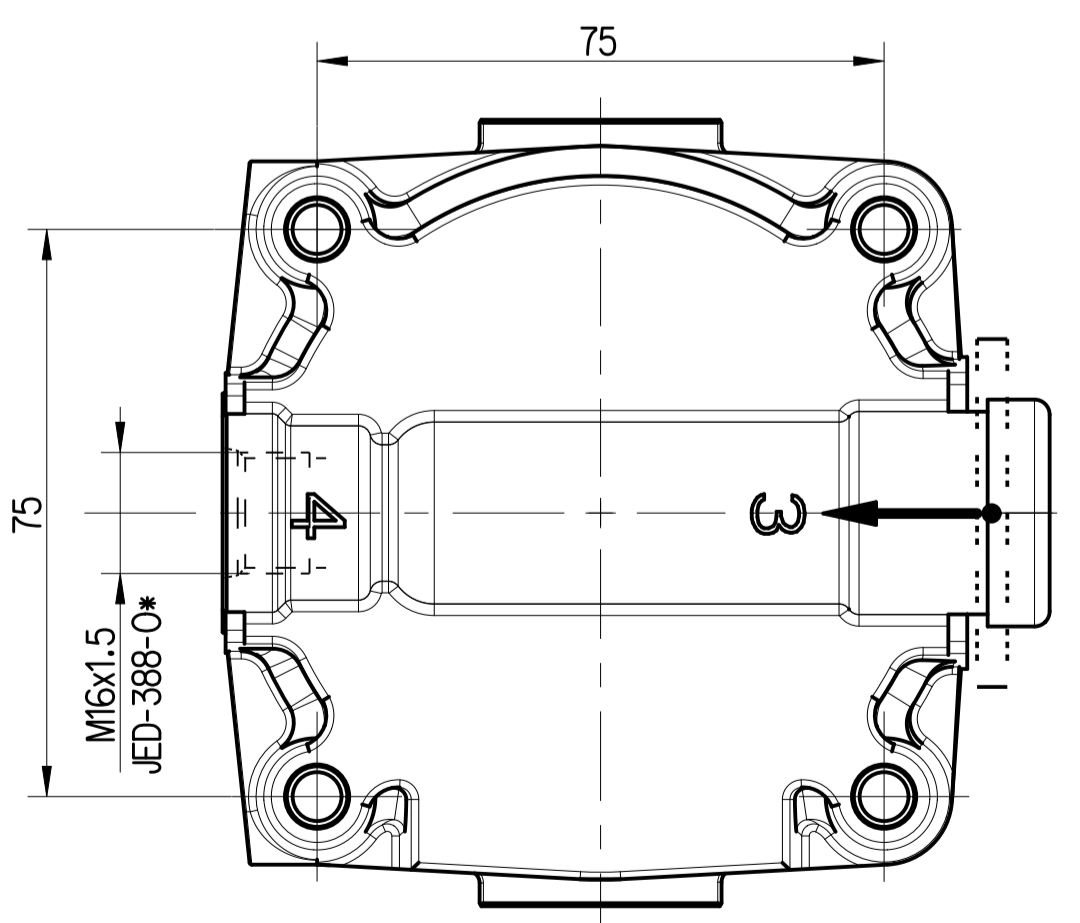
WORKING MEDIUM : AIR (WATER, OIL AND ALCOHOL CONTAINING)  
ARBEITSMEDIUM : LUFT (WASSER, OEL- UND ALKOHOLHALTIG)  
FLUIDE D'UTILISATION : AIR (CHARGE D'EAU, D'HUILE ET D'ALCOOL)  
FLUIDO DI ESERCIZIO : ARIA (CONTENENTE ACQUA, OLIO ED ALCOOL)

AMBIENT ENVIRONMENT : AIR (CONTAINING WATER, SALT, DUST AND OIL)  
UMGEBUNGSMEDIUM : LUFT (WASSER-, SALZ-, STAUB UND OELHALTIG)  
FLUIDE AMBIENT : AIR (CHARGE D'EAU, DE SEL, DE POUSSIERE ET D'HUILE)  
FLUIDO AMBIENTE : ARIA (CONTENENTE ACQUA, SALE, POLVERO ED OLIO)

THERMAL RANGE OF APPLICATION : -40° ... +80 °C  
KURZZEITIGE WAERMEBESTAENDIGKEIT (DRUCKLOS, OHNE FUNKTION) : MAX. 1h BEI 110 °C ODER MAX. 2h BEI 95 °C  
PLAGE DE TEMPERATURE EN : -40 °C ... +80 °C  
CAMPO D'APPLICAZIONE TERMICA NELLE: PER ULTERIORI INFORMAZIONI VEDERE TECNICI SPECIFICA

SHORT TERM RESISTANCE TO HEAT (UNPRESSURIZED, WITHOUT FUNCTION) : MAX. 1h AT 110 °C OR MAX. 2h AT 95 °C  
RESISTANCE THERMIQUE TEMPORAIRE (SANS PRESSION, SANS FONCTION) : MAX. 1h A 110 °C OU MAX. 2h A 95 °C  
RESISTANZA TERMICA PER BREVE PERIODO (ENZA PRESSIONE, SENZA FUNZIONE) MAX. 1h A 110 °C O MAX. 2h A 95 °C

- 1 WORKING PRESSURE (SUPPLY) :  $p_e = \text{max. } 13 \text{ bar}$
- 2 DELIVERY PRESSURE :  $p_2 = 0$
- 3 EXHAUST / VENTILATION :  $p_e = \text{max. } 11 \text{ bar}$
- 4 CONTROL PRESSURE :  $p_4 = \text{max. } 11 \text{ bar}$



PERMISSIBLE INSTALLATION POSITION  
ZULAESSIGE EINBAULAGE  
POSITION D'INSTALLATION ADMISE  
POSIZIONE DI MONTAGGIO AMMESSA

TORQUE ACCORDING TO JED-366	*	**
ANZUGSMOMENT ENTSPRECHEND JED-366	M16x1.5	M22x1.5
COUPLE DE SERRAGE SUIVANT JED-366		
COPPIA DI SERRAGIO SECONDO JED-366		
FOR THREAD PERMISSIBLE	max. 34 Nm	max. 53 Nm
FOUR FILETTAGE ZULAESSIG		
PER FILETTAGE ADMISE		
PER FILETTATURA AMMESSA		

General Specification: ISO 8015, JED-334-1, Size ISO 14405 LP		Copyright ZF*	
Further Technical Data: Product Specification		Date	Signature
Doc. Code: 035	Sheet: 1 To 9	2025-08-28	Kawliya
General Tolerances JED-261		Checked	Pawlowski
Range of Nominal Dimensions ( ± mm)		Dimensions in mm	
Class	1) ≤ 50	2) > 50 ≤ 180	3) > 180 ≤ 400
Fine	±0.5	±1	±1.5
Medium	±1	±2	±3
Coarse	±2	±3.5	±5
Mass		Scale	Date of first issue: 2016-03-11
0.822 kg		1:1 (2:1)	Doc. Code Language Sheet
Size CAD System		Material No. PRO 011 000 0	
Tapped Holes acc. JED-388		Revision Techn. Resp. 005 ML 1/1	
1) Tolerance Class Applied Crossmarked		ECN-No. 516312	

Toute communication de reproduction ou de distribution de ce document, sans autorisation écrite de ZF, est formellement interdite. Toute utilisation non autorisée de ce document est formellement interdite. Toute utilisation non autorisée de ce document est formellement interdite.