

THERMAL RANGE OF APPLICATION
THERMISCHER ANWENDUNGSBEREICH
GAMME D'APPLICATION THERMIQUE
CAMPO DI APPLICAZIONE TERMICA

-40°C....+80°C
MAX. TEMP. 100°C
ADMISSIBLE DURING LIMITED
PERIOD OF 20h

TORQUE FOR CONNECTIONS
ANZUGSMOMENT FÜR EINSCHRAUBSTUTZEN
COUPLE DE SERRAGE DES RACCORDS
COPPIA DI SERRAGGIO DEI RACCORDI

30 Nm MAX

- ① INLET
VORRAT
ALIMENTATION
ALIMENTAZIONE (HIGH PRESSURE)
(HOCHDRUCK)
(HAUTE PRESSION)
(ALTA PRESSIONE)
- ② DELIVERY
AUSGESTEURTE LUFT
UTILISATION
UTILIZZAZIONE (LOW PRESSURE)
(NIEDERDRUCK)
(BASSE PRESSION)
(BASSA PRESSIONE)
- ③ EXHAUST
ENTLUEFTUNG
ECHAPPEMENT
SCARICO

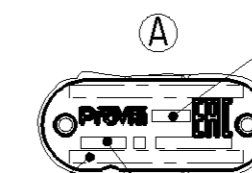
DELIVERY PRESSURE
AUGESTFUERTER
PRESSION D'UTILISATION
PRESSIONE D'UTILIZZAZIONE P2=8.0+0.3/-0.1 bar FOR
FUER P1=12 bar
POUR PER

OPENING OF SAFETY VALVE
OEFFNUNG DES SICHERHEITSVENTILS
OUVERTURE DE LA SOUPEPE DE SECURITE P2+2.5 bar (MAX)
APERTURA DELLA VALVOLA DI SICUREZZA

NOMINAL DIAMETER MIN.
MIN. FREIER DURCHGANG
DIAMETRE NOMINAL MIN.
DIAMETRO NOMINALE MIN. 10 mm (78.5 mm²)

MEDIUM
MEDIUM
FLUIDE
FLUIDE AIR
LUFT
AIR
ARIA

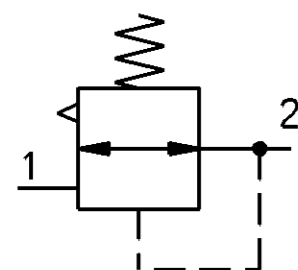
NAME PLATE DETAILS



MANUFACTURING PLANT:
PRODUKTIONSSTAETTE: JED-225
LIEU DE FABRICATION:
LUOGO DI FABRICAZIONE:

ProVia IDENTIFICATION NUMBER
ProVia TEILE NUMMER
NUMERO D'IDENTIFICATION ProVia
NUMERO D'IDENTIFICAZIONE

WEEK / YEAR OF MANUFACTURE
FERTIGUNGSWOCHE / JAHR
SEMAINE / ANNEE DE FABRICATION
SETTIMANA / ANNO DELLA FABRICAZIONE



INLET
VORRAT
ALIMENTATION
ALIMENTAZIONE

P1 MAX = 20 bar

IF
FALLS
SI
SE

P1

CONSTANT
UNVERANDERLICH
CONSTANTE
INVARIABILE

General Specification: JED-334-1, Size ISO 14405 LP		Copyright WABCO®		ProVia	
Further Technical Data:		Date	Signature		
Doc. Code:	Sheet: To	2018-09-19	Aswinkumar	PRESSURE LIMITING VALVE DRUCKBEGRENZUNGSVENTIL	
General Tolerances JED-261		Checked	Vallarasu	VALVE DE LIMITATION DE PRESSION VALVOLA LIMITATRICE DI PRESSIONE	
Range of Nominal Dimensions (± mm)		Expert		K P NAGARAJAN	
Class 1)	≤ 50 > 50 ≤ 180 > 180 ≤ 400 > 400	Mass	Scale	Material No.	Date of first issue: 2015-11-20
Fine	0.5 1.0 1.5 2.0	0.379	1:1	PRO 015 005 0	Doc.Code Language Sheet
Medium	1.0 2.0 3.0 4.0	kg			005 ML 1/1
Coarse	2.0 3.5 5.0 6.5	Size	CAD System	ECN-No.	Revision Techn. Resp.
Tapped Holes acc. JED-152		A 2	CREO	177205	1 A 5160_AM
1) Tolerance Class Applied Crossmarked				Replacement for	

100mm

Non e permesso consegnare o terzi o riprodurre questo documento, ne utilizzare il contenuto o renderlo comunque noto a terzi senza autorizzazione esplicita. Ogni infrazione costituisce un evidente abuso e comportera il risarcimento dei danni subiti. E' fatta riserva di tutti i diritti derivanti da brevetti o modelli.

Copies of this document and giving it to others and the use or communication of the contents thereof, are forbidden without express authority. Contravention of this restriction will constitute an evident abuse and result in a liability to the payment of damages. All rights are reserved in the event of the grant of patent or registration of a utility model or design. This document is the subject of copyright.

Toute communication ou reproduction de ce document, toute exploitation ou communication de son contenu sont interdites, sauf autorisation expresse. Tout manquement a cette regle constitue un abus evident et expose son auteur au versement de dommages et interets. Tous droits de proprieete industrielle reserves, notamment en matiere de brevets et de modesles.

Wiedergabe sowie Vervielfältigung dieser Unterlagen, Vervielfältigen und Mitteilen ihres Inhalts nicht gestattet, soweit nicht ausdrücklich ansonsten, Zuerstveröffentlichung stellen eines offentlichen Missbrauch dar und verpflichtet zu Schadenersatz. Alle Rechte fuer den Fall der Patentierung oder Gebrauchsmuster-Eintragung vorbehalten.

dw: PRO0150050..._0217 version: A.3 / stiller: Liefer: Review / mod: PRO0150050..._A02