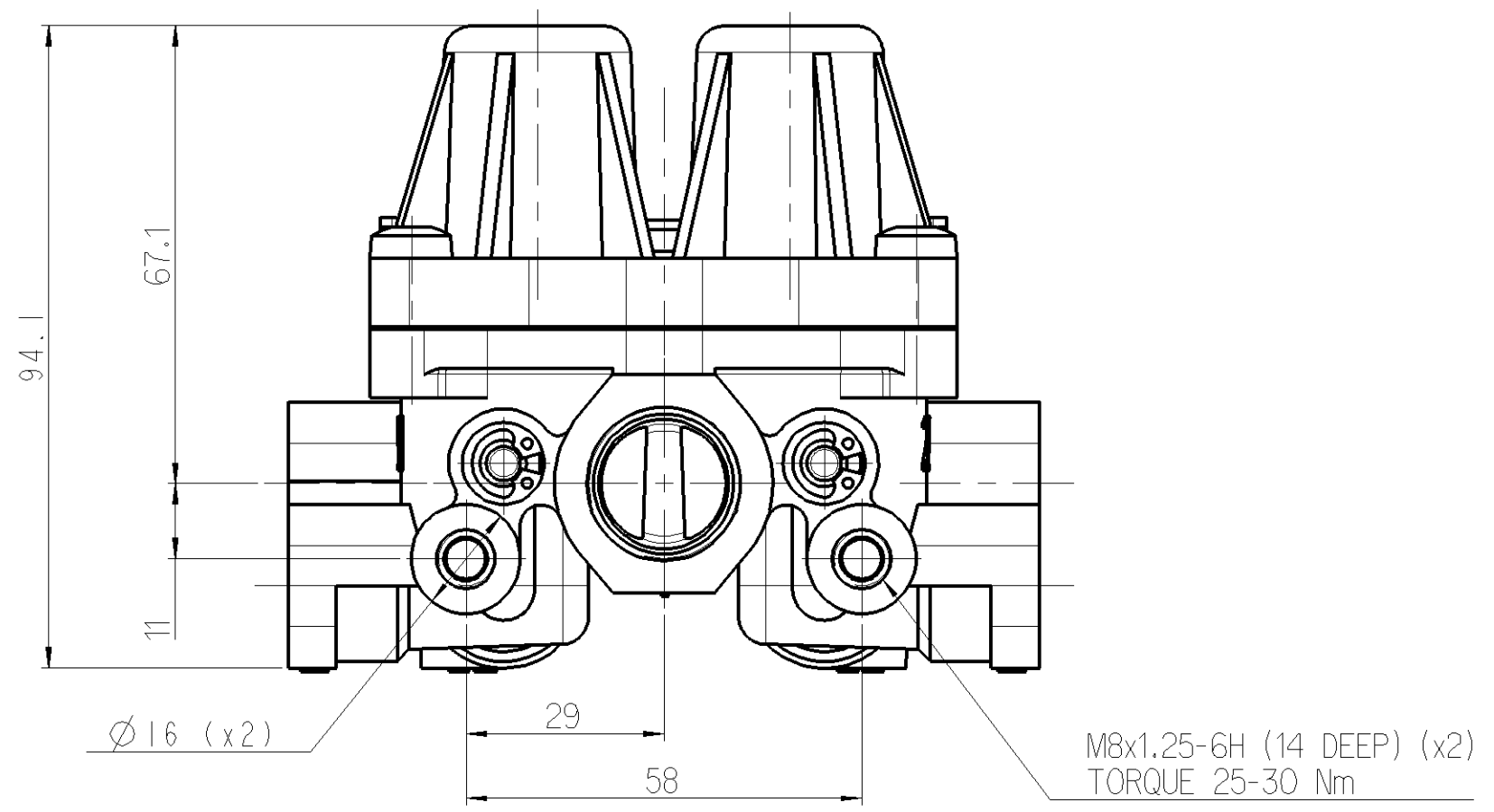
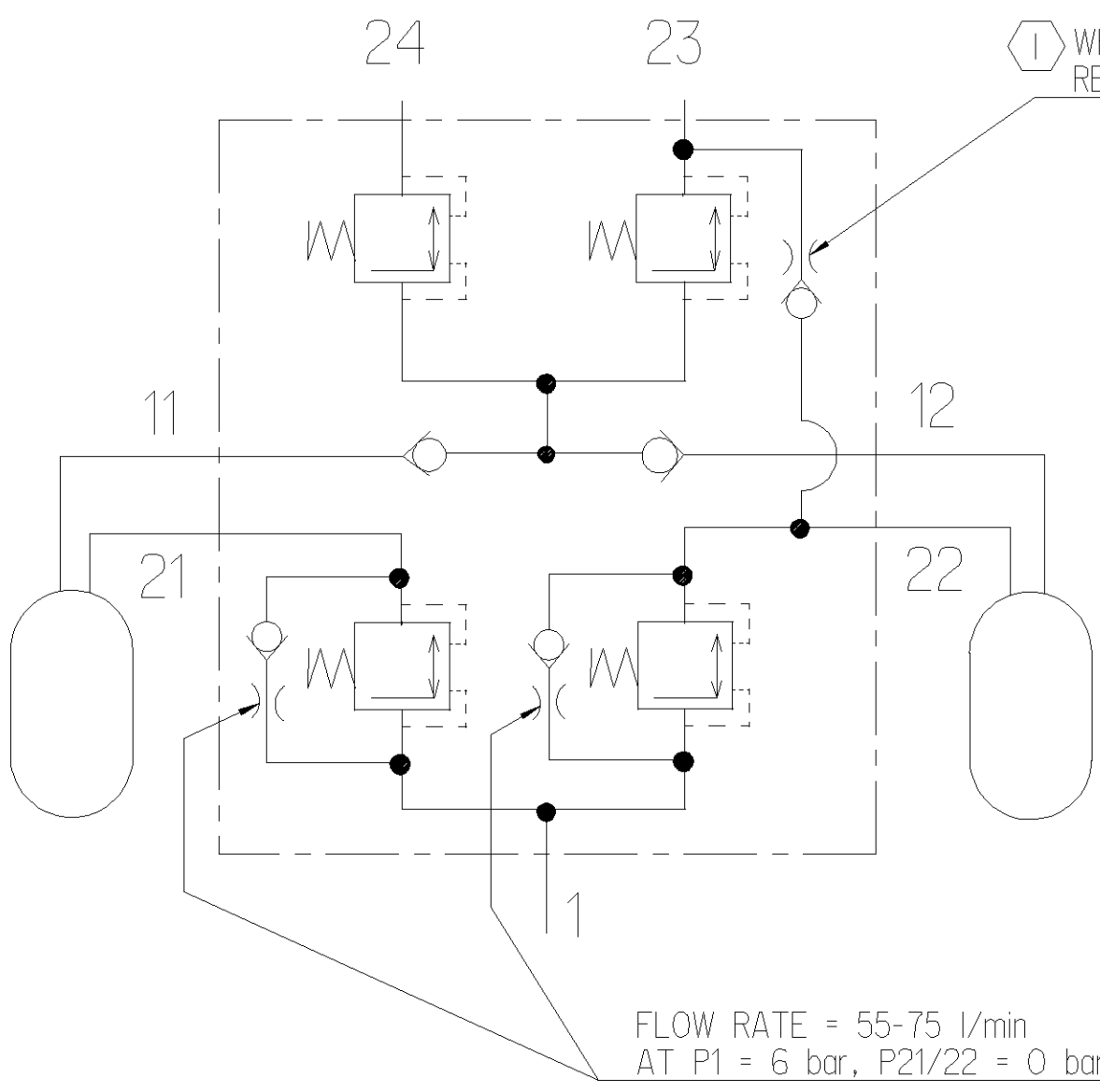


EXTERNAL SURFACE
I JED-352-1
II JED-739-4
III JED-259-3

FLOW RATE = 16-35 l/min
 AT P23 = 8 bar, P12/22 = 0 bar
 ① WHEN P22 DROPS TO ZERO
 RETAINED P23 = 1 bar MAX ②

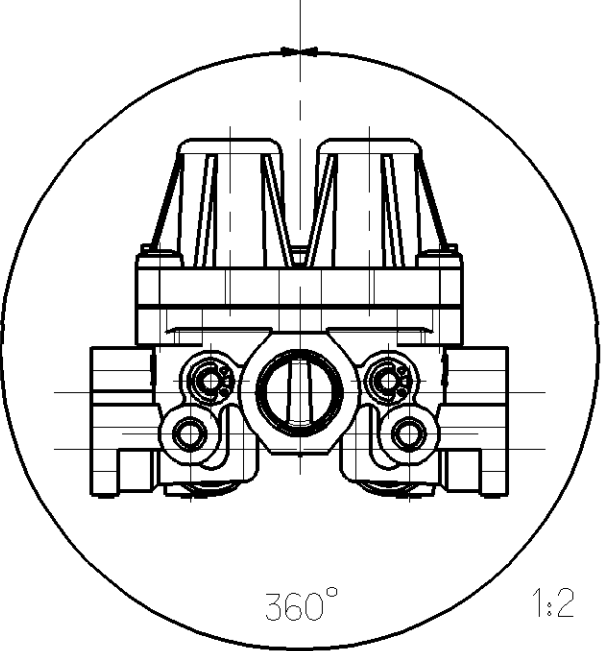
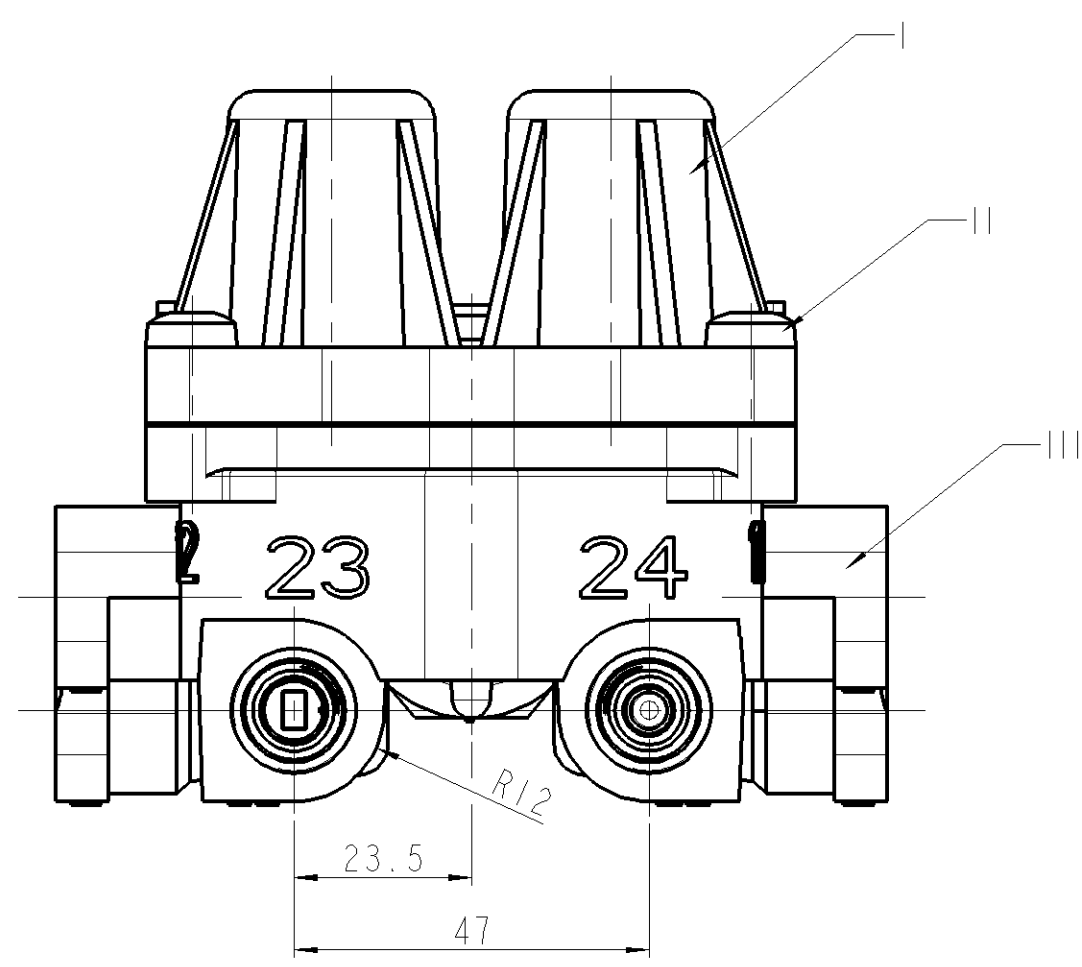
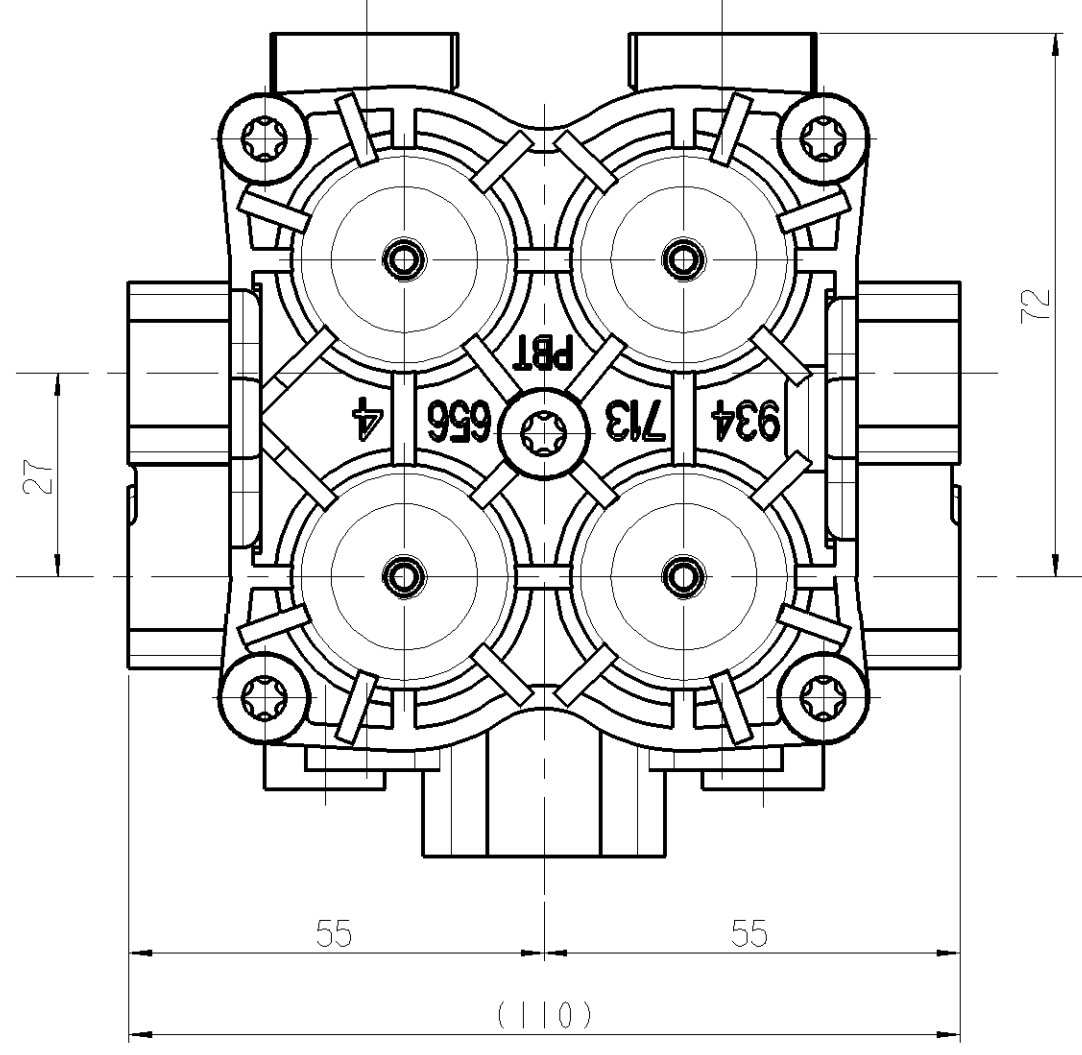
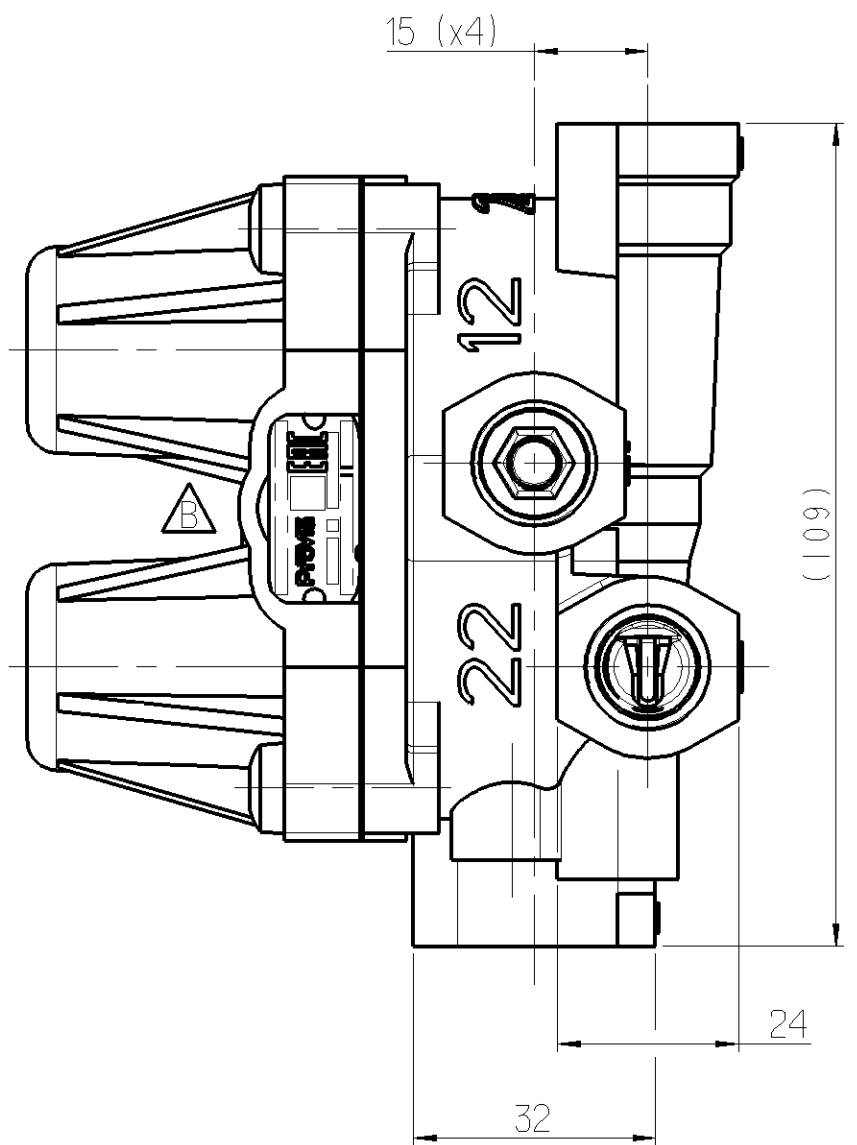
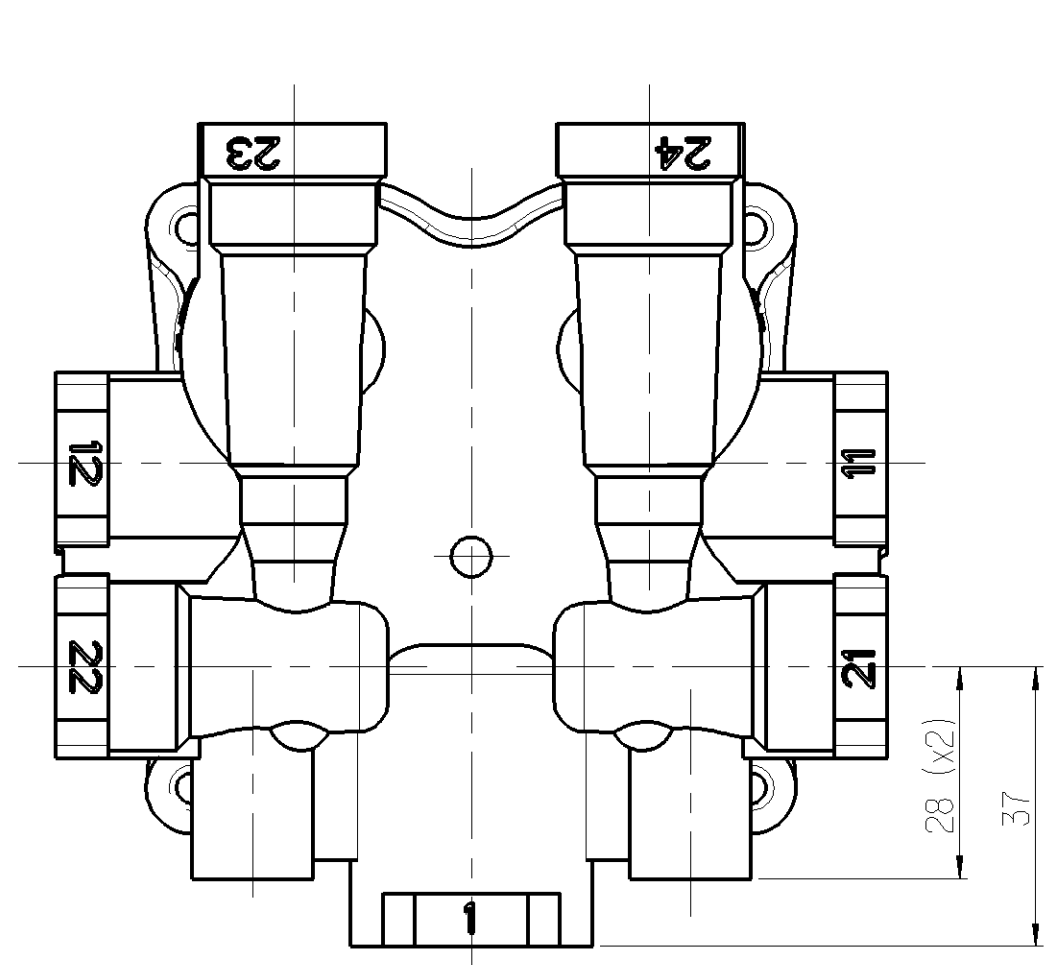


CIRCUIT	21	22	23	24
OPENING PRESSURE DYNAMIC [BAR] [P1]	② 6.3 +0 -0.3		③ 5.8 +0 -0.3	
CLOSING PRESSURE STATIC AT FAILURE OF CIRCUIT..... [BAR]	0	≥ 4	≥ 5.5	≥ 5.5
	≥ 4	0	①	≥ 4
	≥ 4	≥ 4	0	≥ 4
	≥ 4	≥ 4	≥ 4	0

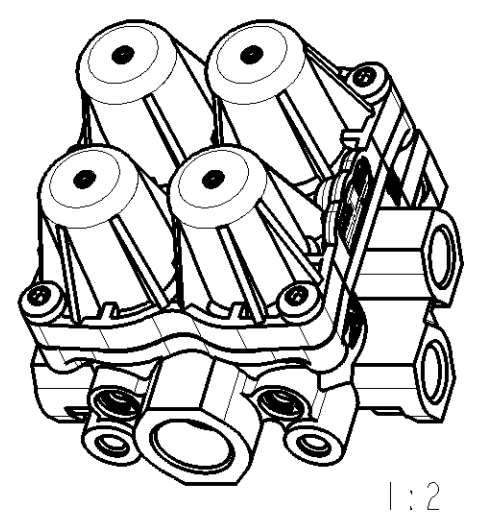
② 90 l/min
 ③ 20 l/min

PORT	FUNCTION	THREAD	TORQUE
1	SUPPLY	M22x1.5-6H x13 FULL THREAD JED-152	55 Nm MAX
11	SUPPLY	M16x1.5-6H x13 FULL THREAD JED-152	35 Nm MAX
12	SUPPLY	M16x1.5-6H x13 FULL THREAD JED-152	35 Nm MAX
21	CIRCUIT 1	M16x1.5-6H x13 FULL THREAD JED-152	35 Nm MAX
22	CIRCUIT 2	M16x1.5-6H x13 FULL THREAD JED-152	35 Nm MAX
23	CIRCUIT 3	M16x1.5-6H x13 FULL THREAD JED-152	35 Nm MAX
24	CIRCUIT 4	M16x1.5-6H x13 FULL THREAD JED-152	35 Nm MAX

MEDIUM	AIR
THERMAL RANGE OF APPLICATION	-40°C...+90°C
SERVICE PRESSURE	13 bar MAX



VALVE MAY BE MOUNTED AT ANY ANGLE



General Specifications: ISO 8015, JED-334-1, Size ISO 14405 LP		Copyright Zr*	
Further Technical Data: Product Specification		Date	Signature
Doc. Code: O35	Sheet: 1 To 3	2023-11-03	Pawłowski
General Tolerances JED-261		Checked	
Range of Nominal Dimensions (± mm)		2023-11-03 Kolkowski	
Class	1) ≤ 50	> 50 > 180	> 180 > 400
Fine	±0.5	±1	±1.5
Medium	±1	±2	±3
Coarse	±2	±3.5	±5
Tapped Holes acc. JED-152		Dimensions in mm	
1) Tolerance Class Applied Crossmarked		Mass	Scale
		0.728	1 : 1
		kg	(2 : 1)
		Size	CAD System
		A 1	CREO
		Material No. PRO 122 004 0	
		EDN-No.	Revision
		515137	2x B
		Date of first issue: 2017-10-30	
		Doc.Code Language Sheet	
		005 EN 1/1	

Non è permesso copiare o riprodurre questo documento, né utilizzare il contenuto a fini commerciali, senza permesso scritto dalla ProVia. È vietata espressamente la ristampa o l'uso non autorizzato. Tutti i diritti sono riservati. È vietata espressamente la ristampa o l'uso non autorizzato. All rights reserved. No part of this document may be reproduced or transmitted in any form or by any means, electronic or mechanical, including photocopying, recording, or by any information storage and retrieval system, without the prior written permission of ProVia. All rights reserved.