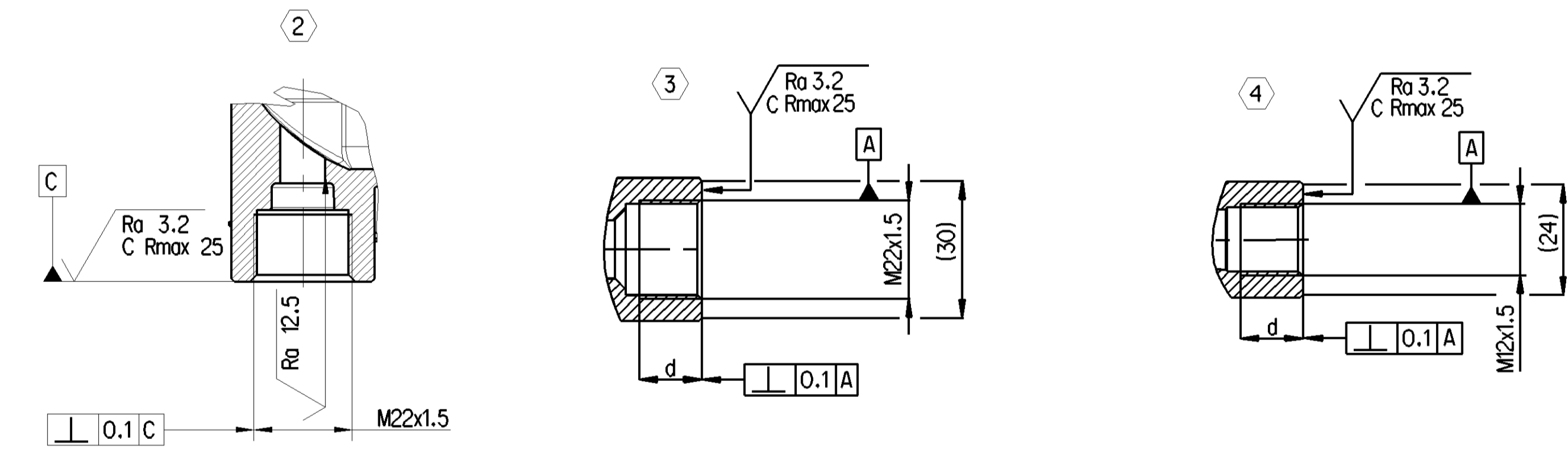
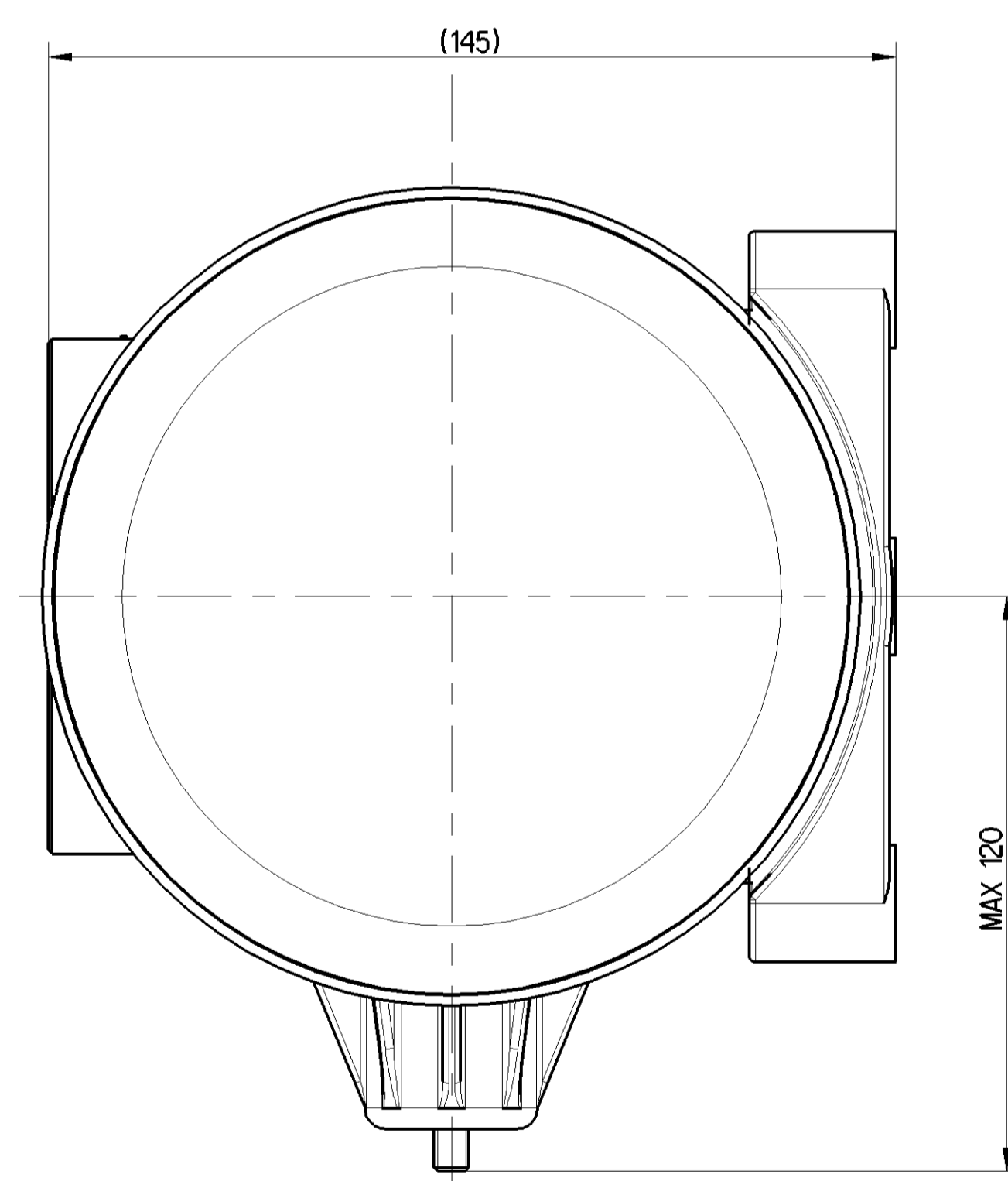
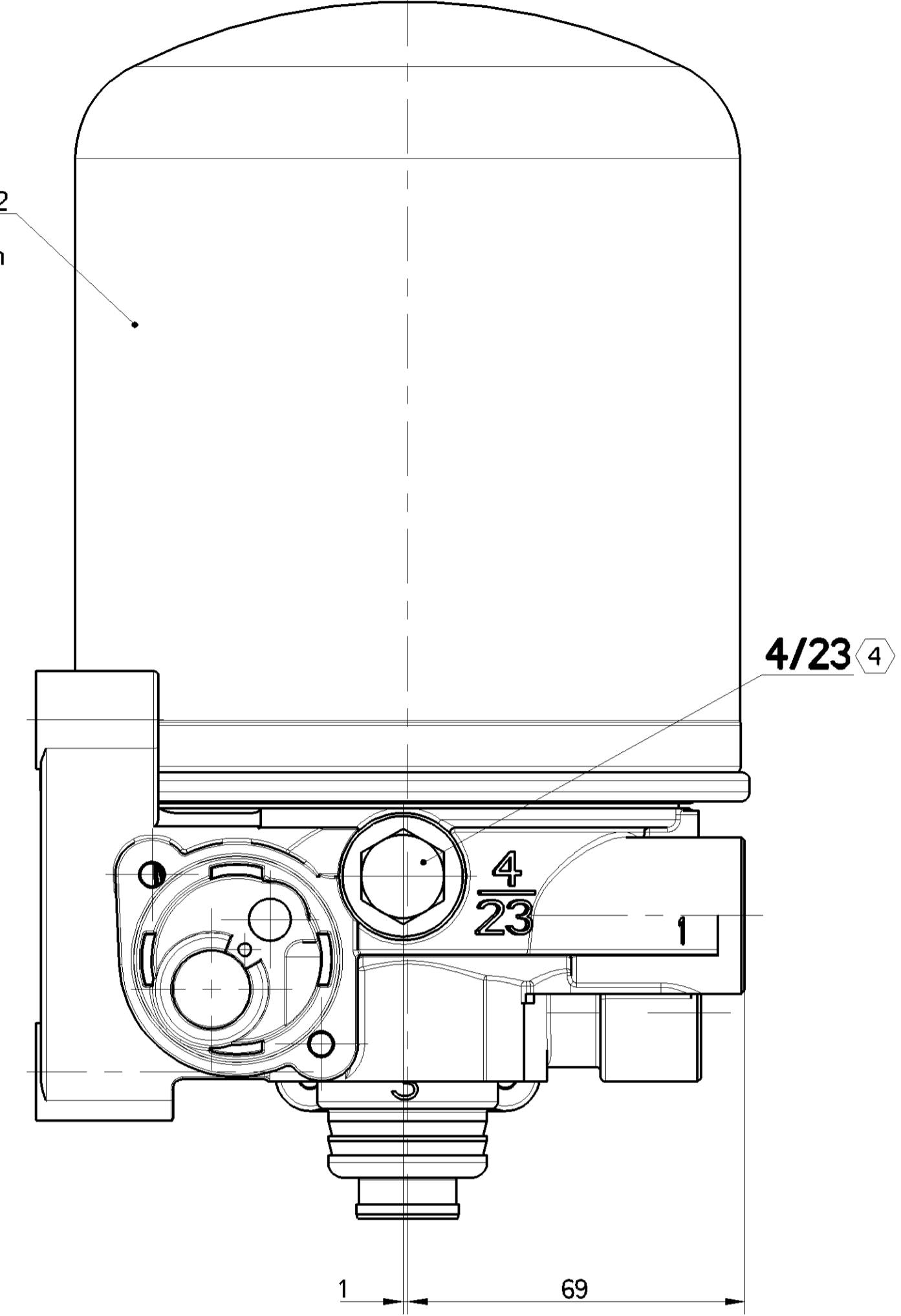
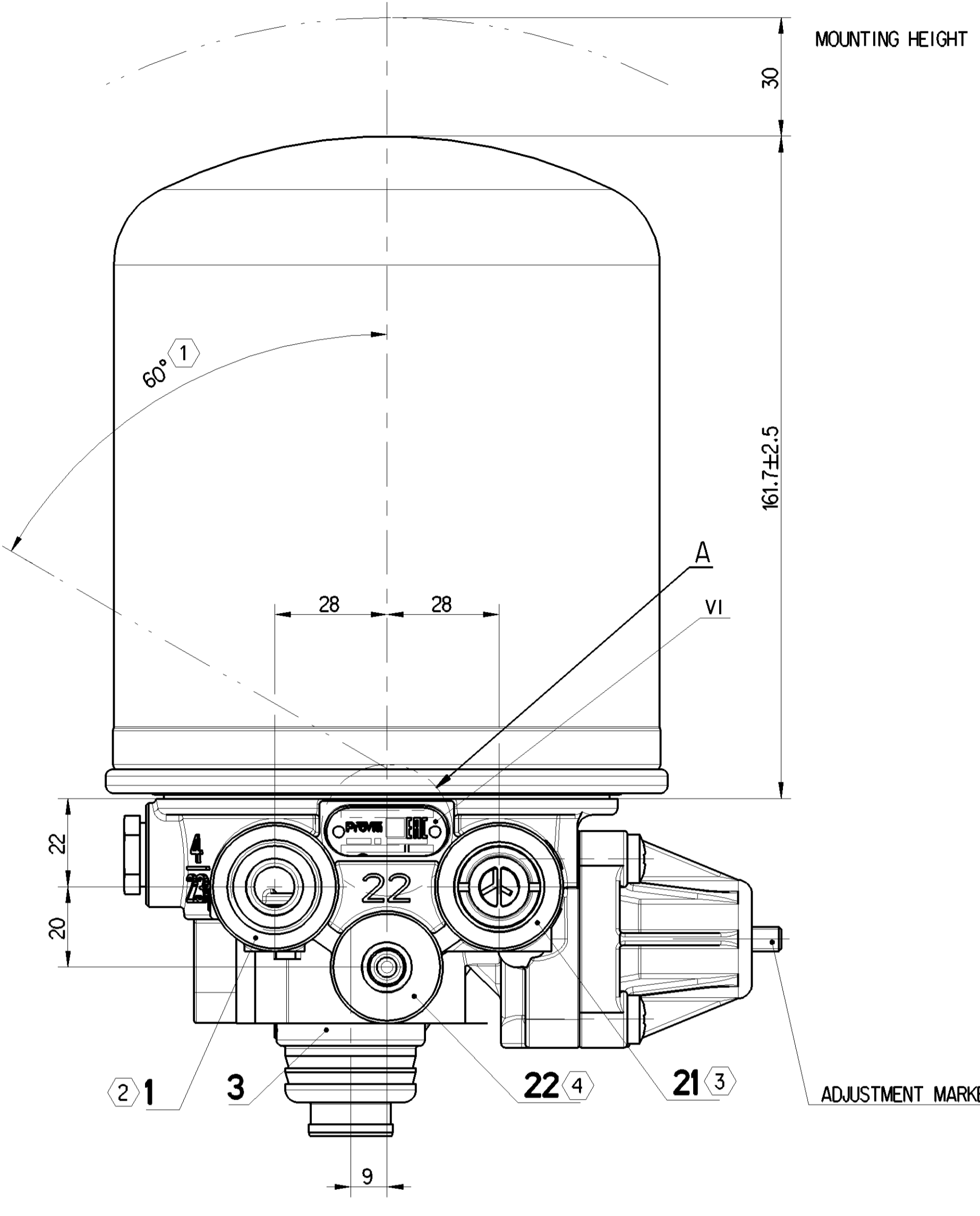
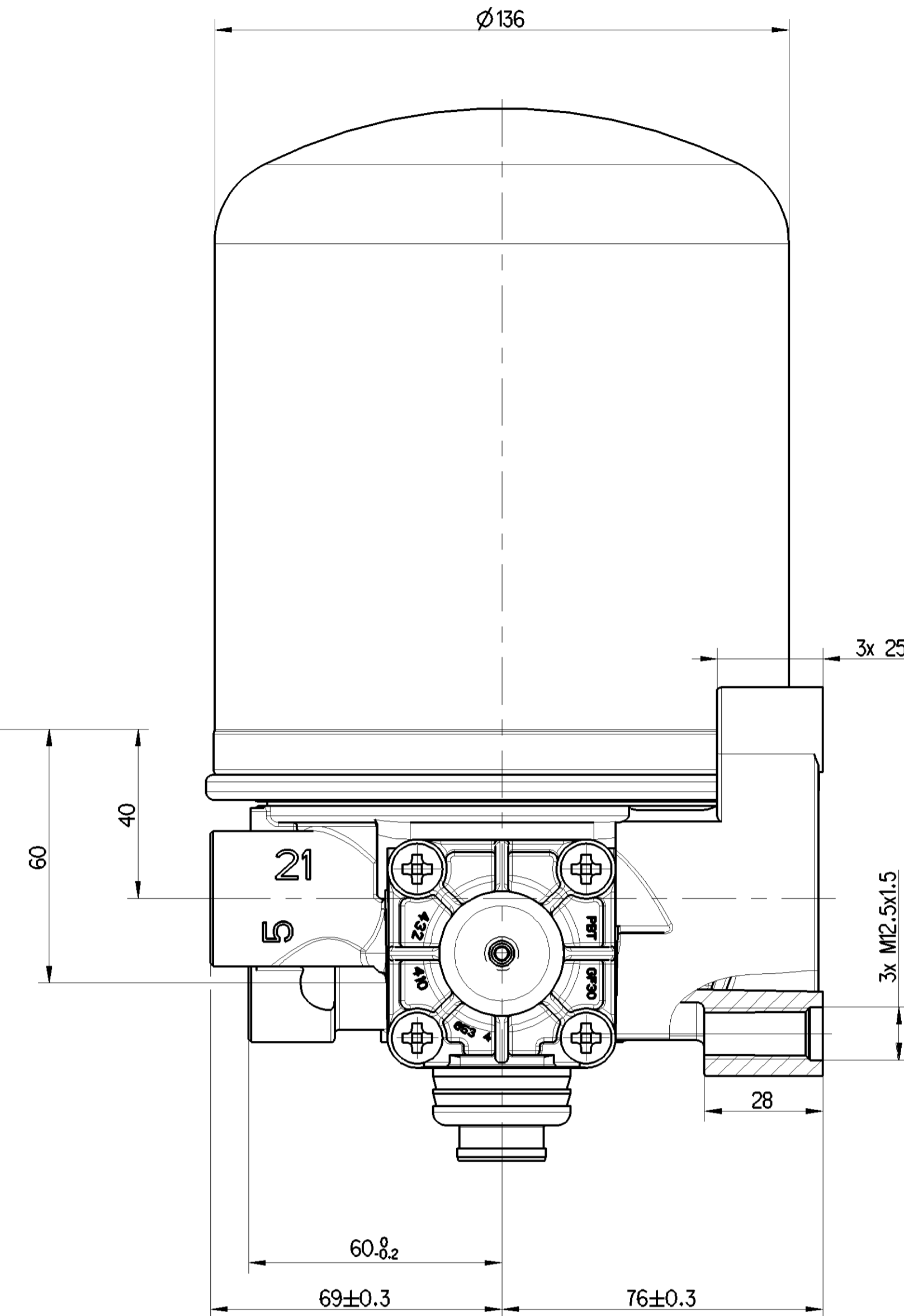
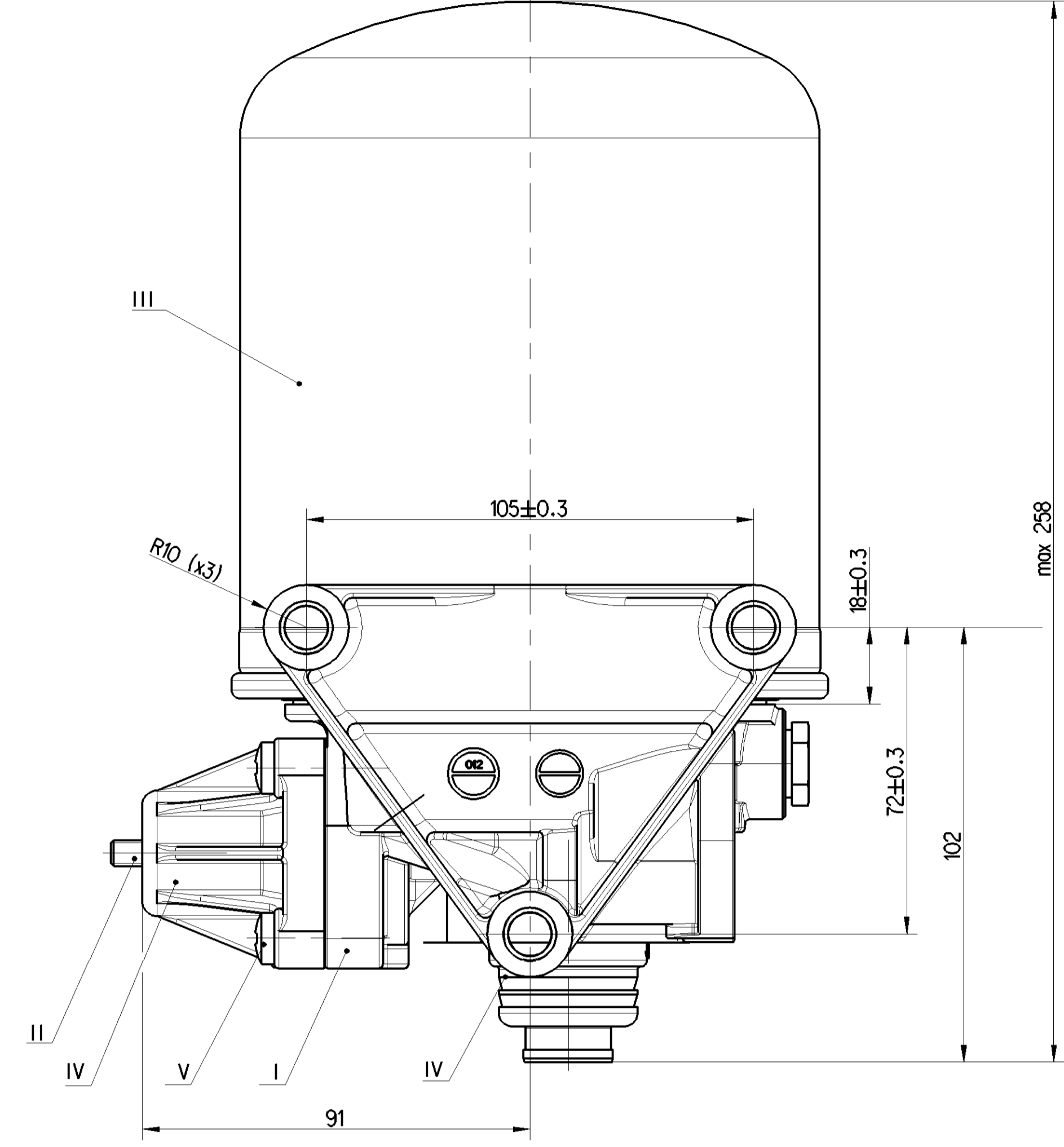


**EXTERNAL SURFACE**

A	I	JED-259-3
	II	JED-256-3
	III	JED-471-0
	IV	PLASTIC
B	V	JED-256-1
	VI	JED-007-1



PORT	FUNCTION	THREAD
1	FROM THE COMPRESSOR	M22x1.5 d=15
21	TO THE RESERVOIRS	M22x1.5 d=24.5
22	TO RESERVOIR FOR REGENERATION AIR	M12x1.5 d=12
3	EXHAUST FOR COMPRESSED AIR	-
4/23	TO THE COMPRESSOR (PLUGGED)	M12x1.5 d=12

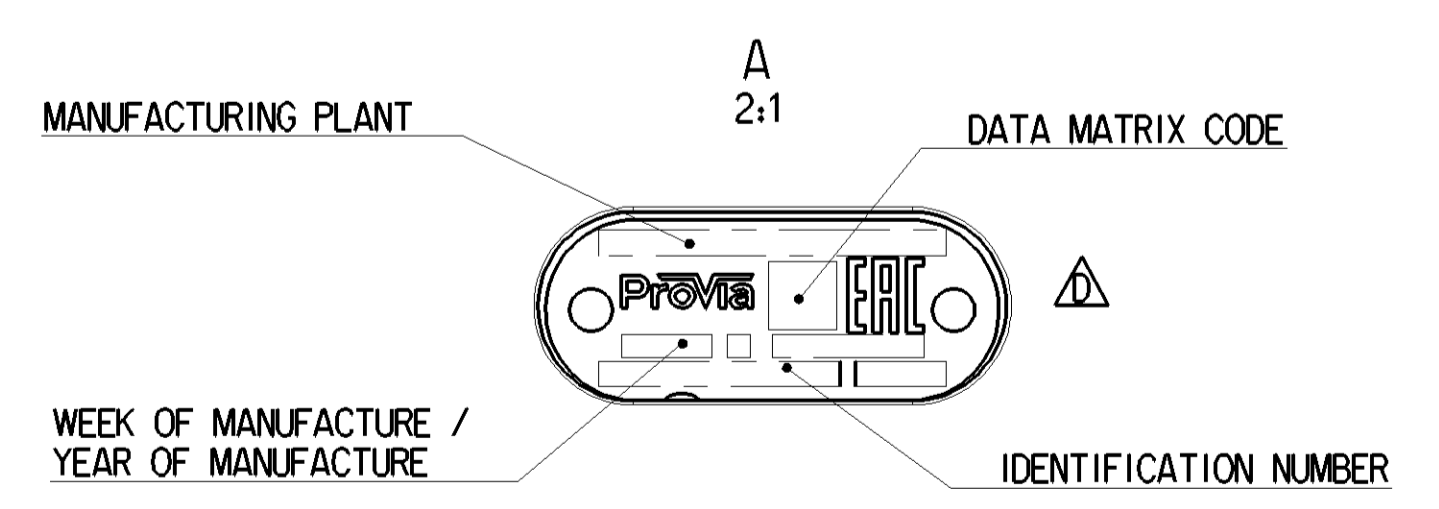
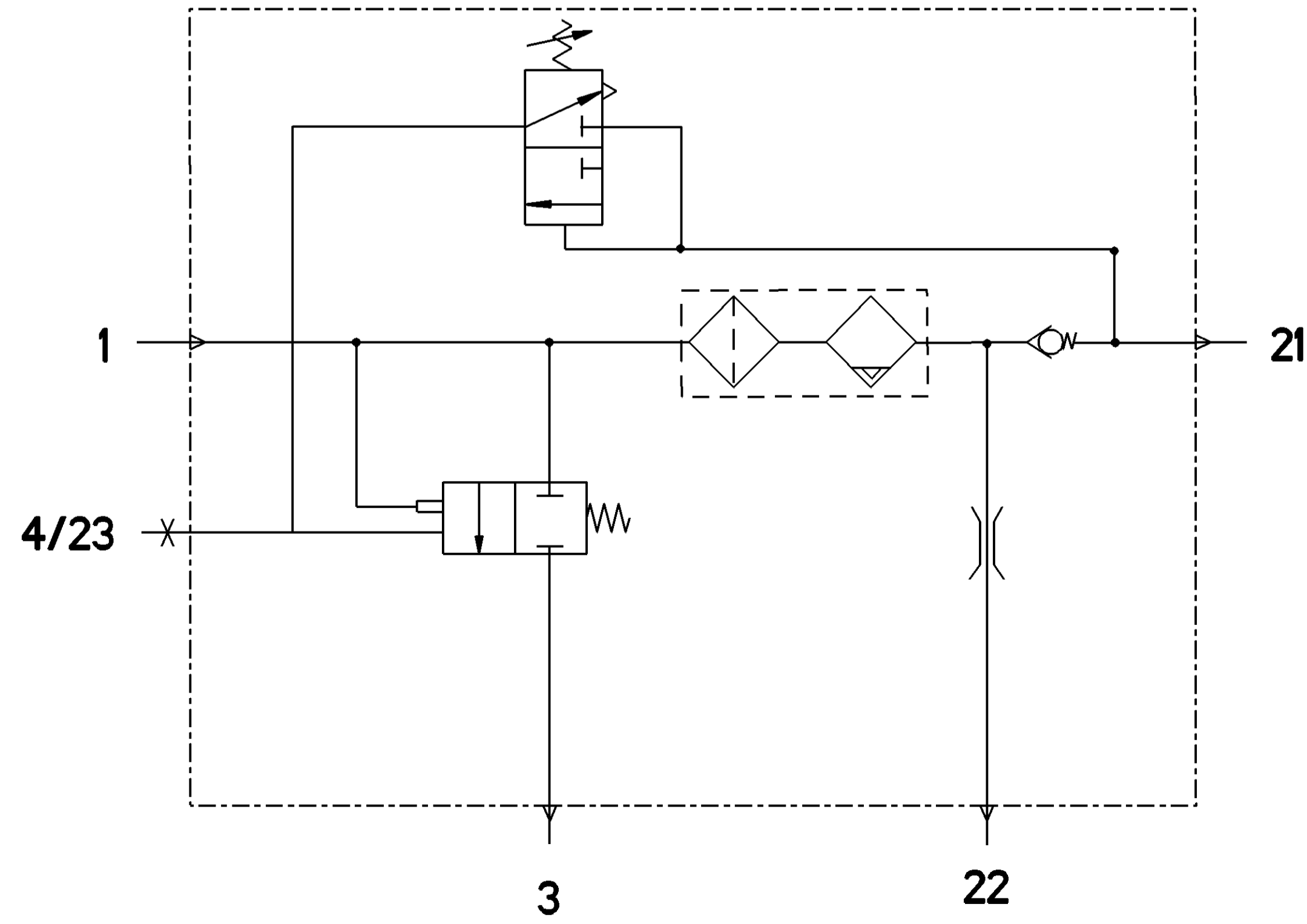
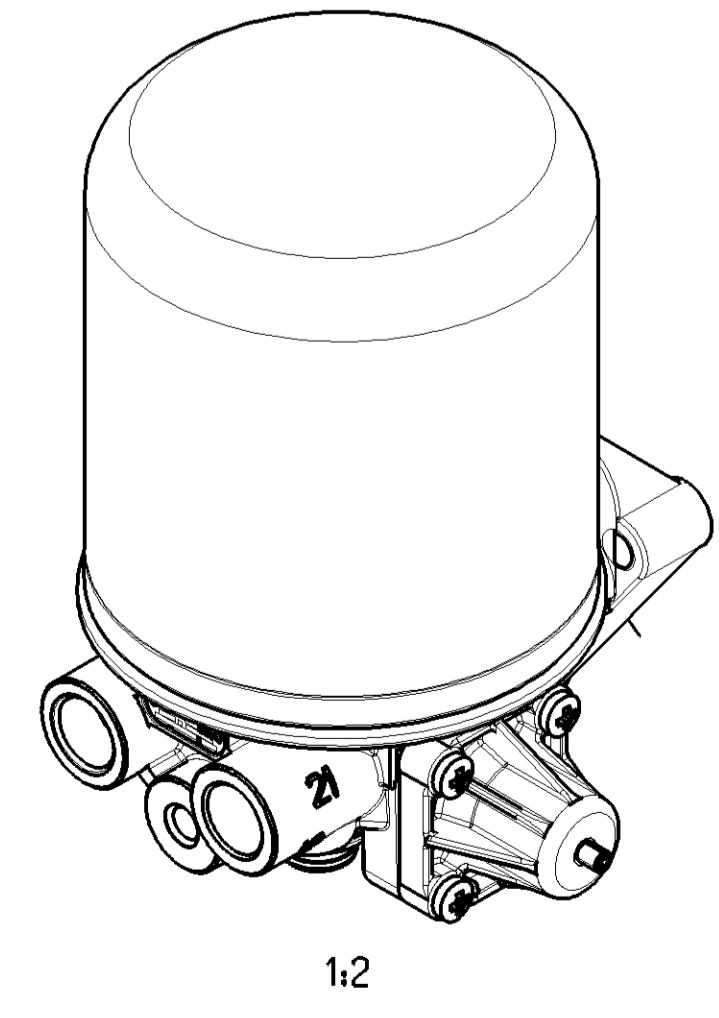
**TECHNICAL DATA**

MEDIUM:	COMPRESSED AIR
WORKING PRESSURE:	Pe MAX = 13 bar
MAX. PERMISSIBLE FREQUENCY:	50 Hz
MAX. PERMISSIBLE ACCELERATION:	10 xg

**COMBINED UNLOADER**

OUT OUT PRESSURE:	9.0±0.3 bar
OPERATING RANGE:	1.3±0.4 bar
DYNAMIC PRESSURE OF SAFETY VALVE:	15 <sup>6</sup> 0 bar (BY Vn = 100 dm <sup>3</sup> /min)
TORQUES FOR CONNECTIONS:	M12x1.5: Mmax = 21 Nm M22x1.5: Mmax = 53 Nm

1 INSTALLATION POSITION AS DRAWN



General Specification: ISO 8508, JED-004-1, Size (S) 14400 LP		Copyright © 2022		<b>Prövia</b>	
Further Technical Data: PRO 122 006 0		Date:	2022-07-05	Sheet:	1 To 4
Doc. Code:	035	Revision:	01	Manufacturer:	Murzym
		Design:	2022-07-05	Designer:	Pawlowski
Range of Nominal Dimensions (d in mm)					
Class:	1	2	3	4	5
Flow:	± 50	± 80	± 100	± 150	± 200
Medium:	X	± 1	± 2	± 3	± 4
Course:	± 2	± 3.5	± 5	± 6.5	± 8
Tapped holes acc. to ISO 15024					
A 0		PRO 122 006 0	005	EN	1/1