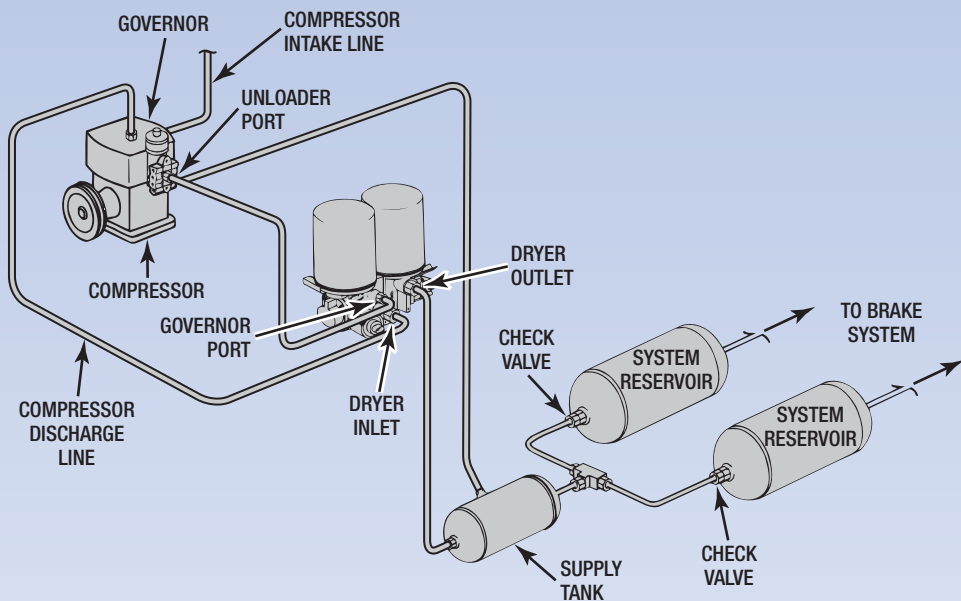


System Saver Twin Cartridge Air Dryers



COALESCING CARTRIDGE



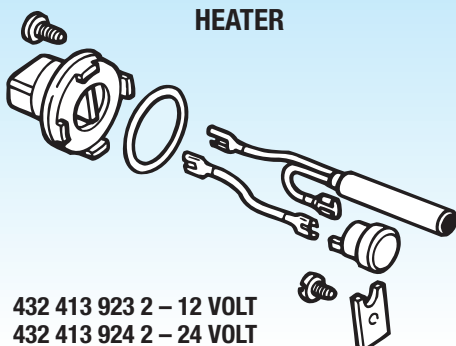
432 901 248 2

PRESSURE RELIEF VALVE



2206-D-1226

HEATER



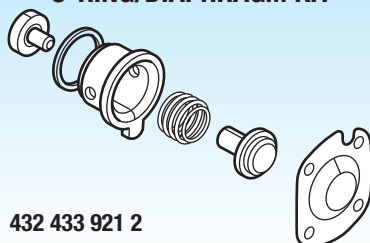
432 413 923 2 – 12 VOLT
432 413 924 2 – 24 VOLT

TURBO CUT-OFF VALVE



432 470 921 2

O-RING/DIAPHRAGM KIT



432 433 921 2



DATE CODE

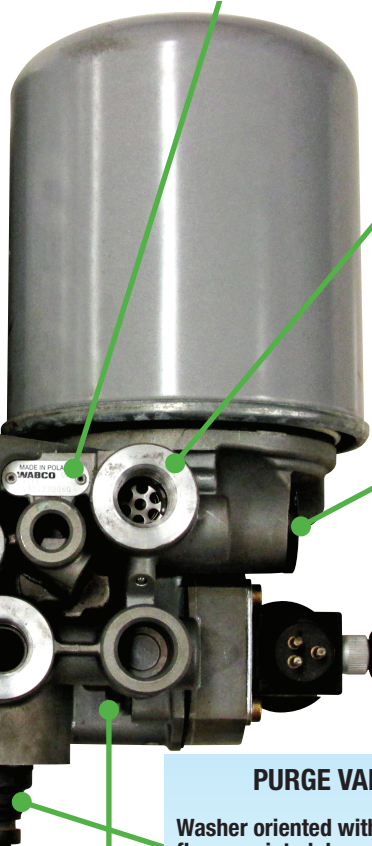
First 2 Digits = Build Week

Last 2 Digits = Build Year

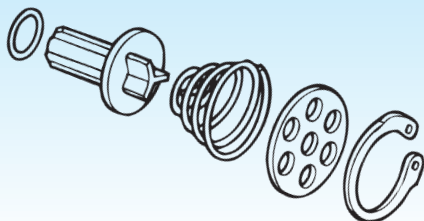


Part Number

Manufacturing
Location Code

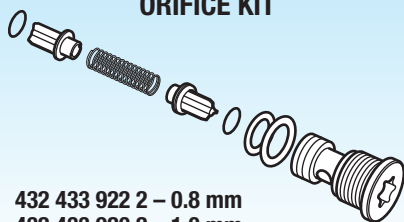


OUTLET CHECK VALVE



432 470 922 2

ORIFICE KIT



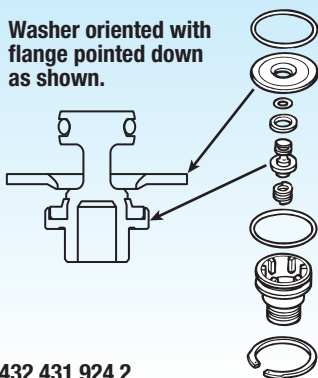
432 433 922 2 – 0.8 mm

432 433 920 2 – 1.0 mm

432 433 923 2 – 1.3 mm

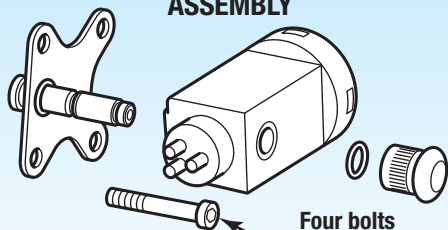
PURGE VALVE

Washer oriented with
flange pointed down
as shown.



432 431 924 2

SOLENOID AND ARMATURE ASSEMBLY



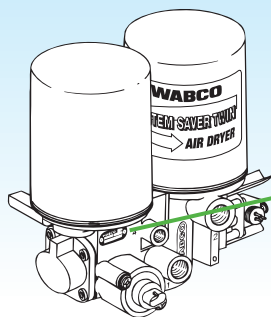
Four bolts
required.
Re-use bolts
and bracket.

432 431 933 2 – 24 VOLT

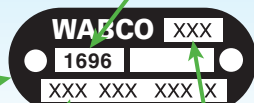
432 431 938 2 – 12 VOLT

432 431 936 2 (Solenoid Hardware)

DATE CODE INFORMATION



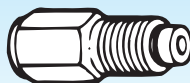
DATE CODE
First 2 Digits = Build Week
Last 2 Digits = Build Year



Part Number

Manufacturing
Location Code

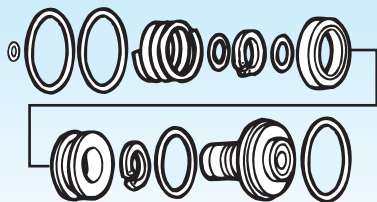
PRESSURE RELIEF VALVE



Use for dryer build dates of 1096 or earlier. Date codes from 1196 have an integral pressure relief valve at the back of the dryer.

2206-D-1226

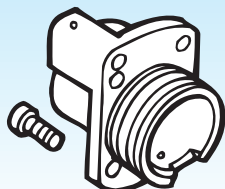
LEFT PISTON



432 431 932 2 (Seals and springs)

432 431 935 2 (Hard parts)

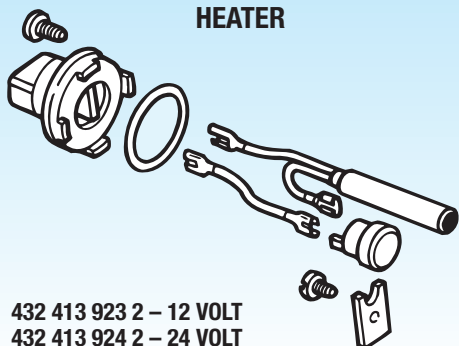
LEFT PISTON COVER



432 431 928 2

432 431 932 2 (O-ring kit)

HEATER

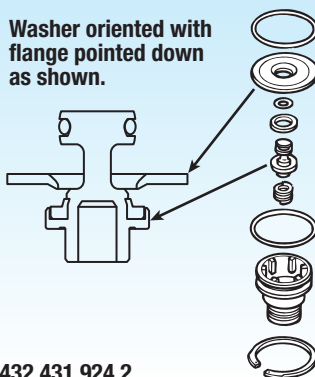


432 413 923 2 – 12 VOLT

432 413 924 2 – 24 VOLT

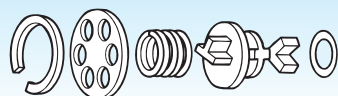
PURGE VALVE

Washer oriented with flange pointed down as shown.



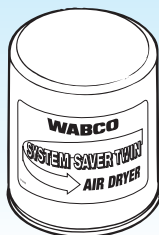
432 431 924 2

OUTLET CHECK VALVE



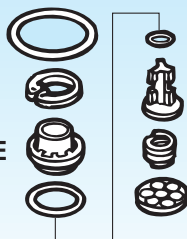
432 431 925 2

DESICCANT CARTRIDGE



432 420 923 2

ORIFICE KIT



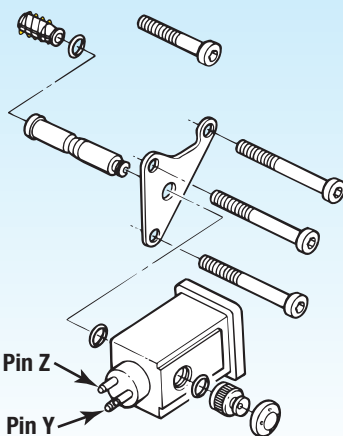
ORIFICE

432 431 940 2 – 0.8 mm

432 431 927 2 – 1.0 mm



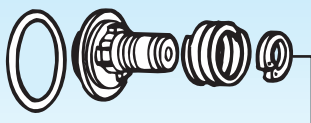
SOLENOID AND ARMATURE ASSEMBLY



Pin Z

Pin Y

RIGHT PISTON



432 431 931 2 (Seals and springs)

432 431 934 2 (Hard parts)

CHARGING VALVE



432 431 930 2

432 431 938 2 (Solenoid/Mtg. Sleeve – 12 volt)

432 431 933 2 (Solenoid/Mtg. Sleeve – 24 volt)

432 431 936 2 (All other solenoid parts)

CONDITION	POSSIBLE CAUSE	SOLUTION
Excessive amount of water in dryer and/or tanks.	No power to the dryer solenoid.	With ignition on, check for voltage at the solenoid connector pins "Y" and "Z". Repair circuit if required.
	Malfunctioning dryer solenoid.	At system air pressure above 80 psi with the ignition on, listen for the solenoid to click every 50-60 seconds. Replace solenoid if not clicking with power applied.
Excessive leak from purge valve with no system air pressure build up. NOTE: Mild leak from purge valve normal when compressor in load cycle.	Air dryer not cycling between cartridges due to low air pressure (less than 15 psi).	After one minute turn ignition off. Restart engine (repeat if necessary). See Product Information Letter #519.
	The governor may be malfunctioning.	Remove the air line from port 4 of the dryer. If purge valve stops leaking, find the source of the air that is pressurizing port 4. Possible source is the governor. Replace as needed.
	The turbo cut-off valve could be leaking.	Possible source can be the turbo cut-off valve. Replace as needed.
	The purge valve may be contaminated.	If the purge valve is still leaking, remove and inspect the purge valve. If ice is present, see air dryer frozen condition. If contamination is found, clean and reinstall.
	The purge valve seal may be damaged or out of position.	If purge valve seal is compromised, repair/replace purge valve.
Air dryer purges too often, perhaps as frequently as every 15 seconds, accompanied by excessive cycling of the compressor.	Leak in the line between compressor and dryer port 4.	Check the air compressor to dryer port 4 line for leaks. Repair or replace line.
	Leaking at the air compressor unloader(s).	Check compressor unloader(s) for leaks. Repair or replace for large leaks (1-inch diameter bubbles in 3 seconds).
	Excessive air system leakage or usage.	If primary and secondary air tanks are losing pressure, find the leaks and repair air system leaks. If primary and secondary air tanks are not losing pressure,
	Outlet check valve not sealing.	Then the problem can be the outlet check valve leaking. Inspect the outlet check valve and repair or replace as required.
	Governor has less than 16 psi range or leaking at the gasket/O-rings.	The problem can be the governor. Replace leaking O-ring/gaskets. Verify the governor range to determine if it is less than 16 psi. Replace if necessary.
Air leak at turbo cut-off valve vent.	Turbo cut-off valve damaged or malfunctioning.	Remove turbo cut-off valve. If you see heat damage, correct the over temperature condition (see Application Guide TP9672). Clean dryer bore and check for damage. Replace turbo cut-off valve if damaged components found. O-rings should be lubricated (see Maintenance Manual MM35).
Air dryer frozen (water collecting in base of dryer is freezing).	No electrical power to heater.	Verify power and ground to heater with ignition on repair circuit as needed.
	Heater is malfunctioning.	Test heater resistance as specified in Maintenance Manual MM35. Replace heater as needed.
No air pressure build-up in system.	Air system leaks, such as compressor discharge line, air dryer, reservoirs, brake and suspension valves.	Listen and check for large air leaks on air brake/suspension components. Repair or replace as needed. If compressor or dryer pressure relief valves are open, diagnose the cause. Remove the unloader line from the compressor and port 4 of the dryer. If the air system starts to build air pressure, find and repair the source of the unloader line pressure.
	Air governor malfunctioning.	One possible source may be a malfunctioning governor. Replace as needed.
	Turbo cut-off valve leaking.	Another possible source is the turbo cut-off valve. Inspect and replace as needed.
	Air compressor malfunctioning.	After completing above solutions, test compressor output according to manufacturer's guidelines. Consult with compressor manufacturer for troubleshooting hints.
Oil or sludge in air system tanks.	Desiccant contaminated with oil.	Inspect compressor for oil passage per manufacturer's instructions. Replace cartridge with a genuine WABCO coalescing cartridge.
Water in system tanks, everything else checks out okay.	Dryer inlet air temperature is too high.	Verify all OE bulletins are performed i.e. compressor discharge line kit.
	Incorrect replacement cartridge used.	Replace cartridge with WABCO replacement cartridge.
	Desiccant not getting correct regeneration.	At system air pressure above 80 psi with the ignition on, listen for dryer solenoid clicking for cartridge regeneration. Replace solenoid as needed.
Dryer and/or compressor pressure relief valve leaking.	Pressure relief valve malfunction or air system restriction.	If the primary and the secondary tanks do not build pressure and the governor and unloader line are not malfunctioning, check for system restrictions and test the pressure relief valve.
	Governor malfunctioning or unloader line leak.	If the primary and secondary tanks reach 145 psi without a purge, verify the governor is pressurizing the unloader line and there are no leaks. If the compressor will not unload with the unloader applied, consult compressor manufacturer.

For more information, see Maintenance Manual MM35 at www.wabco-na.com/literature.

For further product details, contact your distributor or the WABCO Customer Care Center at 855-228-3203.

This publication is not subject to any update service. Information contained in this publication was in effect at the time the publication was approved for printing and is subject to change without notice or liability. WABCO reserves the right to revise the information presented or to discontinue the production of parts described at any time.